



Pages 1 to 12

**THERMISTORS (THERMALLY SENSITIVE RESISTORS), NTC,
4000 OHMS AT +25°C WITH A TEMPERATURE RANGE OF
-55°C TO +115°C**

BASED ON TYPE 4K3A356

ESCC Detail Specification No. 4006/002

Issue 3 - Draft B	March 2012
-------------------	------------



Document Custodian: European Space Agency - see <https://escies.org>

LEGAL DISCLAIMER AND COPYRIGHT

European Space Agency, Copyright © 2012. All rights reserved.

The European Space Agency disclaims any liability or responsibility, to any person or entity, with respect to any loss or damage caused, or alleged to be caused, directly or indirectly by the use and application of this ESCC publication.

This publication, without the prior permission of the European Space Agency and provided that it is not used for a commercial purpose, may be:

- copied in whole, in any medium, without alteration or modification.
- copied in part, in any medium, provided that the ESCC document identification, comprising the ESCC symbol, document number and document issue, is removed.

DOCUMENTATION CHANGE NOTICE

(Refer to <https://escies.org> for ESCC DCR content)

DCR No.	CHANGE DESCRIPTION
tba	Specification up issued to incorporate editorial changes per DCR.

TABLE OF CONTENTS

1.	<u>GENERAL</u>	5
1.1	Scope	5
1.2	Applicable Documents	5
1.3	Terms, Definitions, Abbreviations, Symbols and Units	5
1.4	The ESCC Component Number and Component Type Variants	5
1.4.1	The ESCC Component Number	5
1.4.2	Component Type Variants and Range of Components	5
1.5	Maximum Ratings	6
1.6	Physical Dimensions	6
1.7	Functional Diagram	7
1.8	Materials and Finishes	7
1.8.1	Body	7
1.8.2	Lead Material and Finish	7
2.	<u>REQUIREMENTS</u>	7
2.1	General	7
2.1.1	Deviations from the Generic Specification	8
2.1.1.1	Deviations from Qualification and Periodic Tests - Chart F4	8
2.2	Marking	8
2.3	Thermal Shock	8
2.4	Terminal Strength	8
2.5	Electrical Measurements at Room, High and Low Temperatures	8
2.5.1	Room Temperature Electrical Measurements	8
2.5.2	High and Low Temperatures Electrical Measurements	9
2.6	Parameter Drift Values	9
2.7	Intermediate and End-Point Electrical Measurements	10
2.8	Burn-in Conditions	11
2.9	Operating Life Conditions	11
APPENDIX A		12

1. GENERAL

1.1 SCOPE

This specification details the ratings, physical and electrical characteristics and test and inspection data for the component type variants and/or the range of components specified below. It supplements the requirements of, and shall be read in conjunction with, the ESCC Generic Specification listed under Applicable Documents.

1.2 APPLICABLE DOCUMENTS

The following documents form part of this specification and shall be read in conjunction with it:

- (a) ESCC Generic Specification No. 4006, Thermistors (Thermally Sensitive Resistors).
- (b) MIL-STD-202, Test Method Standard for Electronic and Electrical Component Parts.

1.3 TERMS, DEFINITIONS, ABBREVIATIONS, SYMBOLS AND UNITS

For the purpose of this specification, the terms, definitions, abbreviations, symbols and units specified in ESCC Basic Specification No. 21300 shall apply. In addition, the following symbols are used:

NTC = Negative Temperature Coefficient.
 R_z = Zero Power Resistance.

1.4 THE ESCC COMPONENT NUMBER AND COMPONENT TYPE VARIANTS

1.4.1 The ESCC Component Number

The ESCC Component Number shall be constituted as follows:

Example: 400600201

- Detail Specification Reference: 4006002
- Component Type Variant Number: 01

1.4.2 Component Type Variants and Range of Components

The component type variants and range of components applicable to this specification are as follows:

Variant No.	Based on Type	Resistance/Temperature Characteristics (Notes 1, 2)										Weight max (g)
			-55°C	-40°C	-25°C	0°C	+25°C	+50°C	+70°C	+100°C	+115°C	
01	4K3A356	R_z (Ω)	408340	140400	53740	13240	4000	1428.4	688.5	263.20	172.00	0.1
		Tol. (\pm %)	3.3	2.5	2	1	0.84	0.74	0.65	0.57	1.5	

NOTES:

1. For test purposes, when zero power is dissipated and the ambient temperature is held as specified, the nominal resistance is referred to as R_z (Zero Power Resistance).
2. The reference resistance is specified at +25°C.

1.5 MAXIMUM RATINGS

The maximum ratings shall not be exceeded at any time during use or storage.

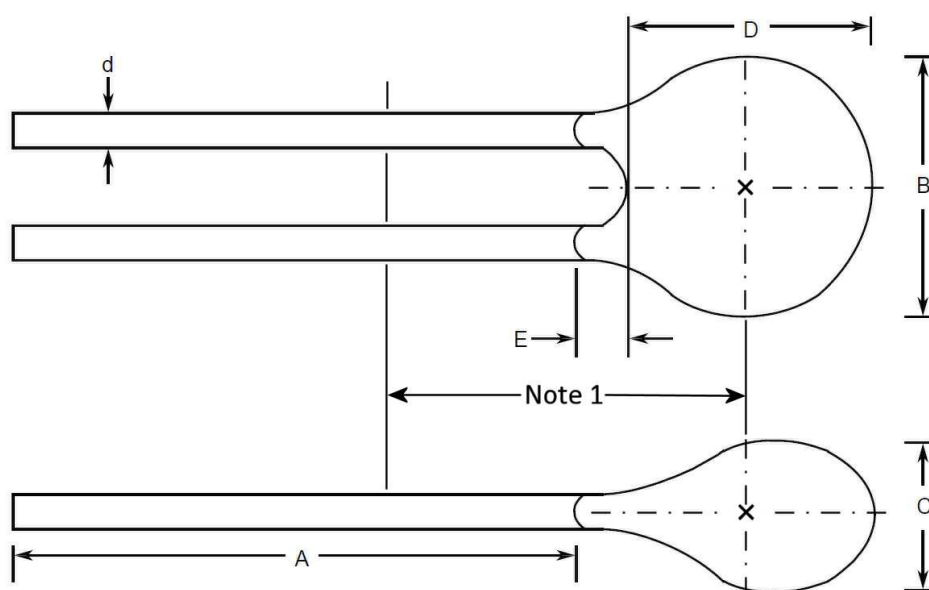
Maximum ratings shall only be exceeded during testing to the extent specified in this specification and when stipulated in Test Methods and Procedures of the ESCC Generic Specification.

Characteristics	Symbols	Maximum Ratings	Units	Remarks
Power Dissipation	P_D	2	mW	Note 1
Operating Temperature Range	T_{op}	Note 2	$^{\circ}\text{C}$	-
Storage Temperature Range	T_{stg}	Note 3	$^{\circ}\text{C}$	-
Soldering Temperature	T_{sol}	+245	$^{\circ}\text{C}$	Note 4

NOTES:

- Never to be exceeded in the temperature measurement mode. The thermistors specified herein shall not be used in the self-heat mode.
- See Component Type Variants and Range of Components.
- 55 $^{\circ}\text{C}$ to the Maximum Operating Temperature in Component Type Variants and Range of Components.
- Duration 10 seconds maximum at a distance of not less than 10mm from the device body and the same lead shall not be resoldered until 3 minutes have elapsed.

1.6 PHYSICAL DIMENSIONS

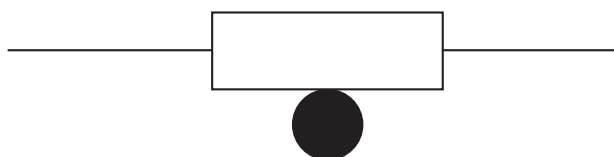


Symbols	Dimensions mm	
	Min	Max
A	50.8	-
B	-	2.29
C	-	2.29
D	-	3.5
d	0.23	0.28
E	-	1.6

NOTES:

- The leads shall not be bent, or the means of fastening them cause bending in any direction within a distance of 15mm from the centre of the thermistor.

1.7 FUNCTIONAL DIAGRAM



1.8 MATERIALS AND FINISHES

1.8.1 Body

The thermistor shall be covered with an epoxy encapsulant.

1.8.2 Lead Material and Finish

The lead material shall be Type A with Type 3 finish in accordance with the requirements of ESCC Basic Specification No. 23500.

2. REQUIREMENTS

2.1 GENERAL

The complete requirements for procurement of the components specified herein are as stated in this specification and the ESCC Generic Specification. Permitted deviations from the Generic Specification, applicable to this specification only, are listed below.

Permitted deviations from the Generic Specification and this Detail Specification, formally agreed with specific Manufacturers on the basis that the alternative requirements are equivalent to the ESCC requirement and do not affect the component's reliability, are listed in the appendices attached to this specification.

2.1.1 Deviations from the Generic Specification

2.1.1.1 *Deviations from Qualification and Periodic Tests - Chart F4*

- (a) Dissipation Constant: Not applicable.
- (b) Short Time Load: Not applicable.
- (c) High Temperature Storage: Not applicable.
- (d) Permanence of Marking: Not applicable.

2.2 MARKING

The marking shall be in accordance with the requirements of ESCC Basic Specification No. 21700 and as follows.

The information to be marked on the component shall be:

- (a) The ESCC Qualified Component Symbol (for ESCC qualified components only).
- (b) The ESCC Component Number.
- (c) Traceability information.

2.3 THERMAL SHOCK

Thermal Shock shall be performed as specified in the ESCC Generic Specification. The Test Condition shall be C, however the maximum test temperature shall be the applicable maximum operating temperature specified in Component Type Variants and Range of Components.

2.4 TERMINAL STRENGTH

The test conditions for Terminal Strength, tested as specified in the ESCC Generic Specification, shall be as follows:

Applied Force : 4.45 (+1.1 - 0)N.
Duration : 5 seconds.

2.5 ELECTRICAL MEASUREMENTS AT ROOM, HIGH AND LOW TEMPERATURES

Electrical measurements shall be performed at room, high and low temperatures.

2.5.1 Room Temperature Electrical Measurements

Unless otherwise specified, the measurements shall be performed at $T_{amb}=+25\pm0.01^{\circ}\text{C}$.

Characteristics	Symbols	Test Method and Conditions	Limits		Units
			Min	Max	
Zero Power Resistance	R_Z	ESCC No. 4006	Note 1		Ω

Characteristics	Symbols	Test Method and Conditions	Limits		Units
			Min	Max	
Insulation Resistance	R_I	ESCC No. 4006 $T_{amb}=+25\pm1^{\circ}\text{C}$ Note 2	100	-	$\text{M}\Omega$
Thermal Time Constant	KH	ESCC No. 4006 $T_{amb}=+25\pm1^{\circ}\text{C}$ In Still Air Note 3	-	25	s

NOTES:

1. See Component Type Variants and Range of Components for resistance values and tolerances.
2. The measurements shall be performed on a sample of 5 components with 0 failures permitted. In the event of any failure a 100% inspection may be performed.
3. Test to be performed on 10 samples and only during Production Control Tests.

2.5.2 High and Low Temperatures Electrical Measurements

The measurements shall be performed at each applicable temperature (with a tolerance of $\pm 0.01^{\circ}\text{C}$) specified in Component Type Variants and Range of Components.

Characteristics	Symbols	Test Method and Conditions	Limits		Units
			Min	Max	
Zero Power Resistance	R_Z	ESCC No. 4006	Note 1		Ω

NOTES:

1. See Component Type Variants and Range of Components for resistance values and tolerances.

2.6 PARAMETER DRIFT VALUES

Unless otherwise specified, the measurements shall be performed at $T_{amb}=+25\pm 0.01^{\circ}\text{C}$.

The test methods and test conditions shall be as per the corresponding test defined in Room Temperature Electrical Measurements.

The drift values (Δ) shall not be exceeded for each characteristic where specified. The corresponding absolute limit values for each characteristic shall not be exceeded.

Characteristics	Symbols	Limits			Units
		Drift Value (Δ)	Absolute		
			Min	Max	
Zero Power Resistance	R _Z	±0.2%	Note 1		Ω

NOTES:

1. See Component Type Variants and Range of Components for resistance values and tolerances.

2.7 INTERMEDIATE AND END-POINT ELECTRICAL MEASUREMENTS

Unless otherwise specified, the measurements shall be performed at $T_{amb}=+25\pm0.01^{\circ}\text{C}$.

Unless otherwise specified the test methods and test conditions shall be as per the corresponding test defined in Room Temperature Electrical Measurements.

The drift values (Δ) shall not be exceeded for each characteristic where specified.

Test Reference per ESCC No. 4006	Characteristics	Symbols	Limits		Units
			Min	Max	
Thermal Time Constant	<u>Initial Measurements</u> Zero Power Resistance	R_Z	Note 1		Ω
	<u>Final Measurements</u> Thermal Time Constant	KH	-	25	s
Shock (Specified Pulse)	<u>Initial Measurements</u> Zero Power Resistance	R_Z	Note 1		Ω
	<u>After Shock</u> Zero Power Resistance Change	$\Delta R_Z/R_Z$	± 2		%
Vibration	<u>Initial Measurements</u> Zero Power Resistance	R_Z	Note 1		Ω
	<u>After Vibration</u> Zero Power Resistance Change	$\Delta R_Z/R_Z$	± 2		%
Resistance to Soldering Heat	<u>Final Measurements</u> Zero Power Resistance	R_Z	Note 1		Ω
Moisture Resistance	<u>Initial Measurements</u> Zero Power Resistance	R_Z	Note 1		Ω
	<u>Final Measurements</u> Zero Power Resistance Change	$\Delta R_Z/R_Z$	± 2		%
	Insulation Resistance	R_I	100	-	M Ω
Terminal Strength	<u>Initial Measurements</u> Zero Power Resistance	R_Z	Note 1		Ω
	<u>Final Measurements</u> Zero Power Resistance Change	$\Delta R_Z/R_Z$	± 2		%
Operating Life	<u>Initial Measurements</u> Zero Power Resistance	R_Z	Note 1		Ω
	<u>At 1000\pm48 hours</u> Zero Power Resistance Change	$\Delta R_Z/R_Z$	± 0.5		%
	Insulation Resistance	R_I	100	-	M Ω
	<u>At 2000\pm48 hours</u> Zero Power Resistance Change	$\Delta R_Z/R_Z$	± 0.5		%
	Insulation Resistance	R_I	100	-	M Ω
Low Temperature Storage	<u>Initial Measurements</u> Zero Power Resistance	R_Z	Note 1		Ω

Test Reference per ESCC No. 4006	Characteristics	Symbols	Limits		Units
			Min	Max	
	<u>Final Measurements</u> Zero Power Resistance Change	$\Delta R_Z/R_Z$	± 2		%

NOTES:

1. See Component Type Variants and Range of Components for resistance values and tolerances.

2.8 BURN-IN CONDITIONS

Characteristics	Symbols	Test Conditions	Units
Ambient Temperature	T_{amb}	Note 1	$^{\circ}\text{C}$
Power Dissipation	P_D	2	mW

NOTES:

1. Maximum Operating Temperature specified in Component Type Variants and Range of Components (+0 -3) $^{\circ}\text{C}$.

2.9 OPERATING LIFE CONDITIONS

The conditions shall be as specified for Burn-in.

APPENDIX A**AGREED DEVIATIONS FOR MEAS Ireland (Betatherm) Ltd**

Items Affected	Description of Deviations
Deviations from the Generic Specification	<p><u>Deviation from Production Control - Chart F2</u> Room Temperature Electrical Measurements: Insulation Resistance may be measured in accordance with MEAS Ireland (Betatherm) Ltd Specification Ref. MFG 12-49-00.</p> <p><u>Deviation from Screening Tests - Chart F3</u> Room Temperature Electrical Measurements: Insulation Resistance may be measured in accordance with MEAS Ireland (Betatherm) Ltd Specification Ref. MFG 12-49-00.</p> <p><u>Additional Deviation from Qualification and Periodic Tests - Chart F4</u> Room Temperature Electrical Measurements: Insulation Resistance may be measured in accordance with MEAS Ireland (Betatherm) Ltd Specification Ref. MFG 12-49-00.</p>