



Pages 1 to 28

INTEGRATED CIRCUITS, MONOLITHIC, HERMETICALLY SEALED

ESCC Generic Specification No. 9000

Issue 5	July 2009
---------	-----------



Document Custodian: European Space Agency - see <https://escies.org>

LEGAL DISCLAIMER AND COPYRIGHT

European Space Agency, Copyright © 2009. All rights reserved.

The European Space Agency disclaims any liability or responsibility, to any person or entity, with respect to any loss or damage caused, or alleged to be caused, directly or indirectly by the use and application of this ESCC publication.

This publication, without the prior permission of the European Space Agency and provided that it is not used for a commercial purpose, may be:

- copied in whole, in any medium, without alteration or modification.
- copied in part, in any medium, provided that the ESCC document identification, comprising the ESCC symbol, document number and document issue, is removed.

DOCUMENTATION CHANGE NOTICE

(Refer to <https://escies.org> for ESCC DCR content)

DCR No.	CHANGE DESCRIPTION
400	Specification upissued to incorporate editorial, technical and policy changes per DCR.

TABLE OF CONTENTS

1.	<u>INTRODUCTION</u>	<u>7</u>
1.1	Scope	7
1.2	Applicability	7
2.	<u>APPLICABLE DOCUMENTS</u>	<u>7</u>
2.1	ESCC Specifications	7
2.2	Other (Reference) Documents	8
2.3	Order of Precedence	8
3.	<u>TERMS, DEFINITIONS, ABBREVIATIONS, SYMBOLS AND UNITS</u>	<u>8</u>
4.	<u>REQUIREMENTS</u>	<u>8</u>
4.1	General	8
4.1.1	Specifications	9
4.1.2	Conditions and Methods of Test	9
4.1.3	Manufacturer's Responsibility for Performance of Tests and Inspections	9
4.1.4	Inspection Rights	9
4.1.5	Customer Source Inspection	9
4.1.5.1	Pre-Encapsulation Customer Source Inspection	9
4.1.5.2	Final Customer Source Inspection	9
4.2	Qualification and Qualification Maintenance Requirements on a Manufacturer	9
4.3	Deliverable Components	10
4.3.1	ESCC Qualified Components	10
4.3.2	ESCC Components	10
4.3.3	Lot Failure	10
4.4	Marking	10
4.5	Materials and Finishes	10
4.6	Radiation Testing	11
5.	<u>PRODUCTION CONTROL</u>	<u>11</u>
5.1	General	11
5.1.1	Rebonding	11
5.2	Wafer Lot Acceptance	11
5.2.1	Process Monitoring Review (Qualified Components Only)	11
5.2.2	Scanning Electron Microscope (SEM) Inspection	12
5.2.3	Total Dose Radiation Testing	12
5.2.4	Documentation	12
5.3	Special In-Process Controls	12
5.3.1	Internal Visual Inspection	12
5.3.2	Bond Strength, and Die Shear or Substrate Attach Strength	12
5.3.3	Dimension Check	12
5.3.4	Weight	12
5.3.5	Documentation	12
6.	<u>SCREENING TESTS</u>	<u>13</u>
6.1	General	13
6.2	Failure Criteria	13
6.2.1	Environmental and Mechanical Test Failure	13
6.2.2	Parameter Drift Failure	13
6.2.3	Parameter Limit Failure	13
6.2.4	Other Failures	13
6.3	Failed Components	13

6.4	Lot Failure	13
6.4.1	Lot Failure during 100% Testing	14
6.4.2	Lot Failure during Sample Testing	14
6.5	Documentation	14
7.	<u>QUALIFICATION, QUALIFICATION MAINTENANCE AND LOT VALIDATION TESTING</u>	<u>14</u>
7.1	Qualification Testing	14
7.1.1	General	14
7.1.2	Distribution within the Qualification Test Lot	14
7.1.2.1	Single Component Type	14
7.1.2.2	Family of Component Types	15
7.2	Qualification Within A Capability Approved Domain	15
7.3	Qualification within a Technology Flow	15
7.4	Qualification Maintenance (Periodic Testing)	15
7.5	Lot Validation Testing	16
7.6	Failure Criteria	16
7.6.1	Environmental and Mechanical Test Failures	16
7.6.2	Electrical Failures	16
7.6.3	Other Failures	16
7.7	Failed Components	16
7.8	Lot Failure	17
7.9	Qualification, Qualification Maintenance and Lot Validation Testing Samples	17
7.10	Documentation	17
8.	<u>TEST METHODS AND PROCEDURES</u>	<u>17</u>
8.1	Internal Visual Inspection	17
8.2	Bond Strength, and Die Shear or Substrate Attach Strength	17
8.2.1	Bond Strength	17
8.2.2	Die Shear or Substrate Attach Strength	18
8.3	Scanning Electron Microscope Inspection	18
8.4	Total Dose Radiation Testing	18
8.5	High Temperature Stabilisation Bake	18
8.6	Temperature Cycling	18
8.7	Particle Impact Noise Detection (PIND)	18
8.8	Seal	19
8.8.1	Seal, Fine Leak	19
8.8.2	Seal, Gross Leak	19
8.9	Electrical Measurements	19
8.9.1	Parameter Drift Values	19
8.9.2	High and Low Temperatures Electrical Measurements	19
8.9.3	Room Temperature Electrical Measurements	19
8.9.4	Intermediate and End-Point Electrical Measurements	19
8.10	External Visual Inspection and Dimension Check	19
8.11	Mechanical Shock	19
8.12	Vibration	19
8.13	Constant Acceleration	19
8.14	Thermal Shock	20
8.15	Moisture Resistance	20
8.16	Solderability	20
8.17	Permanence of Marking	20
8.18	Terminal Strength	20
8.19	Operating Life	20
8.20	High Temperature Reverse Bias Burn-in	20

8.21	Power Burn-in	21
9.	<u>DATA DOCUMENTATION</u>	<u>21</u>
9.1	General	21
9.1.1	Qualification and Qualification Maintenance	22
9.1.2	Component Procurement and Delivery	22
9.1.3	Additional Documentation	22
9.1.4	Data Retention/Data Access	22
9.2	Cover Sheet(s)	22
9.3	List of Equipment Used	22
9.4	List of Test References	23
9.5	Wafer Lot Acceptance Data (Chart F2)	23
9.6	Special In-Process Controls Data (Chart F2)	23
9.7	Screening Tests Data (Chart F3)	23
9.8	Qualification and Periodic Tests Data (Chart F4)	23
9.8.1	Qualification Testing	23
9.8.2	Periodic Testing for Qualification Maintenance	23
9.8.3	Lot Validation Testing	23
9.9	Failed Components List and Failure Analysis Report	24
9.10	Certificate Of Conformity	24
10.	<u>DELIVERY</u>	<u>24</u>
11.	<u>PACKAGING AND DISPATCH</u>	<u>24</u>
12.	<u>CHARTS</u>	<u>25</u>
12.1	Chart F1 - General Flow for Procurement	25
12.2	Chart F2 - Production Control	26
12.3	Chart F3 - Screening Tests	27
12.4	Chart F4 - Qualification and Periodic Tests	28

1. **INTRODUCTION**

1.1 **SCOPE**

This specification defines the general requirements for the qualification, qualification maintenance, procurement, and delivery of hermetically sealed monolithic integrated circuit components for space applications. This specification contains the appropriate inspection and test schedules and also specifies the data documentation requirements.

1.2 **APPLICABILITY**

This specification is primarily applicable to the granting of qualification approval to components qualified in accordance with one of the following ESCC methods:

- Qualification of Standard Components per ESCC Basic Specification No. 20100.
- Qualification of a component within an approved capability domain per ESCC Basic Specification No. 24300.
- Technology Flow Qualification per ESCC Basic Specification No. 25400.

It is also primarily applicable to the procurement of components so qualified.

This specification may also be applied to the procurement of unqualified components, recommendations for which are given in ESCC Basic Specification No. 23100.

2. **APPLICABLE DOCUMENTS**

The following documents form part of, and shall be read in conjunction with, this specification. The relevant issues shall be those in effect on the date of starting qualification or placing the Purchase Order.

2.1 **ESCC SPECIFICATIONS**

- No. 20100, Requirements for the Qualification of Standard Electronic Components for Space Application.
- No. 20400, Internal Visual Inspection.
- No. 20500, External Visual Inspection.
- No. 20600, Preservation, Packaging and Dispatch of ESCC Components.
- No. 21300, Terms, Definitions, Abbreviations, Symbols and Units.
- No. 21400, Scanning Electron Microscope Inspection of Semiconductor Dice.
- No. 21700, General Requirements for the Marking of ESCC Components.
- No. 22800, ESCC Non-Conformance Control System.
- No. 22900, Total Dose Steady-State Irradiation Test Method.
- No. 23100, Recommendations on the use of the ESCC Specification System for the Evaluation and Procurement of Unqualified Components.
- No. 23500, Lead Materials and Finishes for Components for Space Application.
- No. 23800, Electrostatic Discharge Sensitivity Test Method.
- No. 24300, Requirements for the Capability Approval of Electronic Component Technologies for Space Application.
- No. 25400, Requirements for the Technology Flow Qualification of Electronic Components for Space Application.
- No. 24600, Minimum Quality System Requirements.
- No. 24800, Resistance to Solvents of Marking, Materials and Finishes.

For qualification and qualification maintenance or procurement of qualified components, with the exception of ESCC Basic Specifications Nos. 20100, 21700, 22800, 24300, 24600 and 25400, where Manufacturers' specifications are equivalent to, or more stringent than, the ESCC Basic Specifications

listed above, they may be used in place of the latter, subject to the approval of the ESCC Executive.

Such replacements shall be clearly identified in the applicable Process Identification Document (PID).

For procurement of unqualified components, where Manufacturers' specifications are equivalent to or more stringent than the applicable ESCC Basic Specifications listed above, they may be used in place of the latter subject to the approval of the Orderer.

Such replacements may be listed in an appendix to the appropriate Detail Specification at the request of the Manufacturer or Orderer, subject to the approval of the ESCC Executive.

Unless otherwise stated herein, references within the text of this specification to "the Detail Specification" shall mean the relevant ESCC Detail Specification.

2.2 OTHER (REFERENCE) DOCUMENTS

- ECSS-Q-ST-70-02, Thermal Vacuum Test for the Screening of Space Materials.
- MIL-STD-883, Test Methods and Procedures for Micro-electronics.

2.3 ORDER OF PRECEDENCE

For the purpose of interpretation and in case of conflict with regard to documentation, the following order of precedence shall apply:

- (a) ESCC Detail Specification.
- (b) ESCC Generic Specification.
- (c) ESCC Basic Specification.
- (d) Other documents, if referenced herein.

3. TERMS, DEFINITIONS, ABBREVIATIONS, SYMBOLS AND UNITS

The terms, definitions, abbreviations, symbols and units specified in ESCC Basic Specification No. 21300 shall apply.

4. REQUIREMENTS

4.1 GENERAL

The requirements for the qualification of a component shall be in accordance with ESCC Basic Specification No. 20100.

The requirements for approval of a capability domain and the qualification of a component (type approval testing) within an approved domain shall be in accordance with ESCC Basic Specification No. 24300.

The requirements for Technology Flow Qualification and the listing of qualified component types shall be in accordance with ESCC Basic Specification No. 25400.

The test requirements for procurement of both qualified and unqualified components (see Chart F1) shall comprise:

- Wafer Lot Acceptance with, if stipulated in the Purchase Order, total dose radiation testing.
- Special In-Process Controls.
- Screening Tests.
- Periodic Testing (for qualified components only).
- Lot Validation Testing if stipulated in the Purchase Order.

4.1.1 Specifications

For qualification, qualification maintenance, procurement and delivery of components in conformity with this specification, the applicable specifications listed in Section 2 of this document shall apply in total unless otherwise specified herein or in the Detail Specification.

4.1.2 Conditions and Methods of Test

The conditions and methods of test shall be in accordance with this specification, the ESCC Basic Specifications referenced herein and the Detail Specification.

4.1.3 Manufacturer's Responsibility for Performance of Tests and Inspections

The Manufacturer shall be responsible for the performance of tests and inspections required by the applicable specifications. These tests and inspections shall be performed at the plant of the Manufacturer of the components unless it is agreed by the ESCC Executive (for qualification, qualification maintenance, or procurement of qualified components) or the Orderer (for procurement of unqualified components), to use an approved external facility.

4.1.4 Inspection Rights

The ESCC Executive (for qualification, qualification maintenance, or procurement of qualified components) or the Orderer (for procurement of unqualified components if stipulated in the Purchase Order) reserves the right to monitor any of the tests and inspections scheduled in the applicable specifications.

4.1.5 Customer Source Inspection

4.1.5.1 *Pre-Encapsulation Customer Source Inspection*

If stipulated in the Purchase Order, the Orderer may perform a source inspection at the Manufacturer's facility prior to encapsulation (including, for example, performance of Internal Visual Inspection, witness of Bond Strength and Die Shear). Details of the inspections to be performed or witnessed and the required period of notification shall be as stipulated in the Purchase Order.

4.1.5.2 *Final Customer Source Inspection*

If stipulated in the Purchase Order, the Orderer may perform a source inspection at the Manufacturer's facility at the end of Screening or during Lot Validation Testing, if applicable, (including, for example, witness of final Room Temperature Electrical Measurements, performance of External Visual Inspection and Dimension Check, review of the data documentation package). Details of the inspections to be performed or witnessed and the required period of notification shall be as stipulated in the Purchase Order.

4.2 QUALIFICATION AND QUALIFICATION MAINTENANCE REQUIREMENTS ON A MANUFACTURER

To obtain and maintain the qualification of a component, or family of components, a Manufacturer shall satisfy the requirements of ESCC Basic Specification No. 20100.

To obtain and maintain the qualification of a component in a capability approved domain, a Manufacturer

shall satisfy the requirements of ESCC Basic Specification No. 24300.

To obtain and maintain the qualification of a component produced using a qualified Technology Flow, a Manufacturer shall satisfy the requirements of ESCC Basic Specification No. 25400.

4.3 DELIVERABLE COMPONENTS

4.3.1 ESCC Qualified Components

Components delivered to this specification shall be processed and inspected in accordance with the relevant Process Identification Document (PID).

4.3.2 ESCC Components

Each component, irrespective of qualification status, identified with an ESCC component number and delivered to this specification shall:

- be traceable to its production lot.
- have satisfactorily completed all the tests required by the relevant issues of the applicable specifications.
- be produced from lots that are considered by the Manufacturer to be capable of passing all applicable tests, and sequences of tests, that are defined in Chart F4. The Manufacturer shall not knowingly supply components that cannot meet this requirement. In the event that, subsequent to delivery and prior to operational use, a component is found to be in a condition such that, demonstrably, it could not have passed these tests at the time of manufacture, this shall be grounds for rejection of the delivered lot.

4.3.3 Lot Failure

Lot failure may occur during Wafer Lot Acceptance (Chart F2), Special In-Process Controls (Chart F2), Screening Tests (Chart F3), or Qualification and Periodic Tests (Chart F4).

Should such failure occur during qualification, qualification maintenance or procurement of qualified components the Manufacturer shall initiate the non-conformance procedure in accordance with ESCC Basic Specification No. 22800. The Manufacturer shall notify the Orderer and the ESCC Executive by any appropriate written means, within 5 working days, giving details of the number and mode of failure and the suspected cause. No further testing or analysis shall be performed on the failed components until so instructed by the ESCC Executive.

Should such failure occur during procurement of unqualified components the Manufacturer shall notify the Orderer by any appropriate written means within 5 working days, giving details of the number and mode of failure and the suspected cause. No further testing or analysis shall be performed on the failed components until so instructed by the Orderer. The Orderer shall inform the Manufacturer within 5 working days of receipt of notification what action shall be taken.

4.4 MARKING

All components procured and delivered to this specification shall be marked in accordance with ESCC Basic Specification No. 21700.

4.5 MATERIALS AND FINISHES

Specific requirements for materials and finishes are specified in the Detail Specification. Where a definite material or finish is not specified a material or finish shall be used so as to ensure that the component meets the performance requirements of this specification and the Detail Specification. Acceptance or

approval of any constituent material or finish does not guarantee acceptance of the finished product.

Unless otherwise specified in the Detail Specification the component shall be hermetically sealed and shall have a metal body with hard glass seal or a ceramic body. The component case lid shall be welded, brazed, preform soldered or glass frit sealed.

All non-metallic materials and finishes, that are not within a hermetically sealed enclosure, of the components specified in the Detail Specification shall meet the outgassing requirements as outlined in ECSS-Q-ST-70-02.

4.6 RADIATION TESTING

For qualification or qualification maintenance total dose radiation testing shall be performed when specified in the Detail Specification to the specified total dose level.

For procurement, as stipulated in the Purchase Order, total dose radiation testing shall be performed to the total dose level specified in the Detail Specification or to an alternate level if so stipulated in the Purchase Order.

The qualification status of the procured components shall not be impacted by any change to the total dose level applied.

For procurement any lot of components that fails the specified total dose radiation test level may be accepted to a lower level of radiation subject to satisfactory test results at the lower level. In this case the total dose radiation level letter for the lot shall be modified accordingly.

5. PRODUCTION CONTROL

5.1 GENERAL

Unless otherwise specified herein or in the Detail Specification all lots of components used for qualification and qualification maintenance, Lot Validation Testing and for delivery shall be subject to tests and inspections in accordance with Chart F2 in the sequence shown.

Any components which do not meet these requirements shall be removed from the lot and at no future time be resubmitted to the requirements of this specification.

The applicable test requirements are detailed in the paragraphs referenced in Chart F2.

For qualified components the full production control provisions are defined in the PID.

In the case of lot failure, the Manufacturer shall act in accordance with Para. 4.3.3.

5.1.1 Rebonding

The rebonding of wires during assembly is not permitted.

5.2 WAFER LOT ACCEPTANCE

5.2.1 Process Monitoring Review (Qualified Components Only)

Process monitoring review shall be done in compliance with the Manufacturer's SPC rules described in the PID (for qualification, qualification maintenance or procurement of qualified components).

A wafer shall be rejected if one or more process control data parameters exceed the allowed distribution as specified in the PID (for qualification, qualification maintenance or procurement of qualified components).

5.2.2 Scanning Electron Microscope (SEM) Inspection

Components supplied to this specification shall be produced from a wafer lot that has been subjected to, and successfully met, the Scanning Electron Microscope Inspection requirements in accordance with Para. 8.3.

5.2.3 Total Dose Radiation Testing

For qualification or qualification maintenance:

- If specified in the Detail Specification, components shall be produced from a wafer lot which has been subjected to and successfully completed Total Dose Radiation Testing in accordance with Para. 8.4 to the specified total dose level.

During procurement:

- If specified in the Detail Specification and stipulated in the Purchase Order, components shall be produced from a wafer lot which has been subjected to and successfully completed Total Dose Radiation Testing in accordance with Para. 8.4 to the stipulated total dose level.

5.2.4 Documentation

Documentation of Wafer Lot Acceptance shall be in accordance with Para. 9.5.

5.3 SPECIAL IN-PROCESS CONTROLS

5.3.1 Internal Visual Inspection

Internal Visual Inspection shall be performed in accordance with Para. 8.1.

5.3.2 Bond Strength, and Die Shear or Substrate Attach Strength

Bond Strength and either Die Shear or Substrate Attach Strength tests shall be performed on test samples in accordance with Para. 8.2. A single failure shall be cause for lot failure. These tests are considered as destructive and therefore components so tested shall not form part of the delivery lot.

5.3.3 Dimension Check

Dimension Check shall be performed in accordance with Para. 8.10 on 3 samples only.

In the event of any failure a 100% Dimension Check shall be performed.

5.3.4 Weight

The maximum weight of the component specified in the Detail Specification shall be guaranteed but not tested.

5.3.5 Documentation

Documentation of Special In-Process Controls shall be in accordance with Para. 9.6.

6. SCREENING TESTS

6.1 GENERAL

Unless otherwise specified herein or in the Detail Specification, all lots of components used for qualification and qualification maintenance, Lot Validation Testing, and for delivery, shall be subjected to tests and inspections in accordance with Chart F3 in the sequence shown. All components shall be serialised prior to the tests and inspections.

Any components which do not meet these requirements shall be removed from the lot and at no future time be resubmitted to the requirements of this specification.

The applicable test methods and conditions are specified in the paragraphs referenced in Chart F3.

6.2 FAILURE CRITERIA

6.2.1 Environmental and Mechanical Test Failure

The following shall be counted as component failures:- components which fail during tests for which the pass/fail criteria are inherent in the test method, i.e. PIND, Solderability, Seal and External Visual Inspection.

6.2.2 Parameter Drift Failure

The acceptable change limits are shown in Parameter Drift Values in the Detail Specification. A component shall be counted as a parameter drift failure if the changes during High Temperature Reverse Bias Burn-in or during Power Burn-in are larger than the drift values (Δ) specified.

6.2.3 Parameter Limit Failure

A component shall be counted as a limit failure if one or more parameters exceed the limits shown in Room Temperature Electrical Measurements or High and Low Temperatures Electrical Measurements in the Detail Specification.

Any component which exhibits a limit failure prior to the submission to HTRB Burn-in shall be rejected and not counted when determining lot rejection.

6.2.4 Other Failures

A component shall be counted as a failure in any of the following cases:

- Visual failure.
- Mechanical failure.
- Handling failure.
- Lost component.

6.3 FAILED COMPONENTS

A component shall be considered as a failed component if it exhibits one or more of the failure modes described in Para. 6.2.

6.4 LOT FAILURE

In the case of lot failure, the Manufacturer shall act in accordance with Para. 4.3.3.

6.4.1 Lot Failure during 100% Testing

If the number of components failed on the basis of the failure criteria specified in Paras. 6.2.2 and 6.2.3 exceeds 5% (rounded upwards to the nearest whole number) of the components submitted to High Temperature Reverse Bias Burn-in (or Power Burn-in if HTRB Burn-in is not being performed) of Chart F3, the lot shall be considered as failed.

If a lot is composed of groups of components of one family defined in one ESCC Detail Specification, but separately identifiable for any reason, then the lot failure criteria shall apply separately to each identifiable group.

6.4.2 Lot Failure during Sample Testing

A lot shall be considered as failed if the number of allowable failures during sample testing as specified herein or in the Detail Specification, is exceeded.

Unless otherwise specified, if a lot failure occurs, a 100% testing may be performed but the cumulative percent defective shall not exceed that specified in Para. 6.4.1.

No failures are allowed for the Solderability test.

6.5 DOCUMENTATION

Documentation of Screening Tests shall be in accordance with Para. 9.7.

7. QUALIFICATION, QUALIFICATION MAINTENANCE AND LOT VALIDATION TESTING

The requirements of this paragraph are applicable to the tests performed on components or test structures as part of qualification or qualification maintenance in accordance with either ESCC Basic Specification No. 20100, 24300 or 25400 as applicable. They are also applicable to Lot Validation Testing as part of the procurement of qualified or unqualified components.

7.1 QUALIFICATION TESTING

7.1.1 General

Qualification testing shall be in accordance with the requirements specified in Chart F4. The tests of Chart F4 shall be performed on the specified sample, chosen at random from components which have successfully passed the tests in Chart F3. This sample constitutes the Qualification Test Lot.

The Qualification Test Lot is divided into subgroups of tests and all components assigned to a subgroup shall be subjected to all of the tests in that subgroup, in the sequence shown. The applicable test requirements are detailed in the paragraphs referenced in Chart F4.

The conditions governing qualification testing are specified in ESCC Basic Specification No. 20100.

7.1.2 Distribution within the Qualification Test Lot

The Qualification Test Lot shall be comprised in accordance with the following provisions, depending on whether it is required to obtain qualification for a single component type or for a family of component types.

7.1.2.1 *Single Component Type*

When it is proposed to submit a single component for qualification testing, the sample quantity shall be as specified in Chart F4, Note 1. However, when such a single component type is to be qualified in more than one type of package, each package variation must be equally represented in, the

Environmental/Mechanical , Endurance and Assembly Capability Subgroups. For this purpose, the applicable sample distribution shall be the same as for the qualification of a family of component types as specified in Chart F4, Note 2 or Note 3.

7.1.2.2 *Family of Component Types*

A family of component types is a series of components produced by the same manufacturing techniques, up to and including final encapsulation, using the same types of machines and apparatus. Such components will be designed for the same supply, bias and signal voltages and for an input/output compatibility with each other under an established set of loading rules. They shall be produced using the same technology (e.g. the same diffusion schedules, method of metallisation, etc.) and identical design rules.

Qualification may be granted to a family of components subject to the successful outcome of the qualification testing of certain specified component types to represent the family.

Structurally similar components from such a family may be grouped together for the purpose of selecting samples for qualification testing. The component types selected must adequately represent all of the various mechanical, structural and electrical elements encountered within the family.

The component types chosen must be those that employ the extremes of design rules and tolerances and contain the maximum of internal sub-circuitry complexity, i.e. usually those that give the greatest risk of rejection.

When qualification is required for component types in more than one type of package, each package must be adequately represented in the Environmental/Mechanical, Endurance and Assembly Capability subgroups.

The component types may be specified by, but in any case shall be agreed with, the ESCC Executive, prior to the commencement of qualification testing and the justification for the selection shall be declared in the qualification test report.

The number of component types selected as representative of the family will therefore determine the total number of components comprising the qualification test lot. Depending on the number of types selected, the sample sizes shall be as specified Chart F4, Note 2 or Note 3.

In the case of four or more component types selected, different pass/fail criteria from those shown in Chart F4 may be applicable. When appropriate, these shall be agreed with the ESCC Executive prior to the commencement of qualification testing.

7.2 QUALIFICATION WITHIN A CAPABILITY APPROVED DOMAIN

The qualification of a component within a capability approved domain shall be in accordance with ESCC Basic Specification No. 24300.

7.3 QUALIFICATION WITHIN A TECHNOLOGY FLOW

The qualification of a component produced using a qualified Technology Flow shall be in accordance with ESCC Basic Specification No. 25400.

7.4 QUALIFICATION MAINTENANCE (PERIODIC TESTING)

Qualification is maintained through periodic testing and the test requirements of Para. 7.1 shall apply. For each subgroup the sample size and the period between successive subgroup testing shall be as

specified in Chart F4. The conditions governing qualification maintenance are specified in ESCC Basic Specification No. 20100.

Qualification of a component within a capability approved domain is maintained by maintenance of the approval of the capability domain itself in accordance with ESCC Basic Specification No. 24300.

Qualification of a component, produced using a qualified Technology Flow, is maintained by the maintenance of the Technology Flow Qualification itself in accordance with ESCC Basic Specification No. 25400.

7.5 LOT VALIDATION TESTING

For procurement of qualified components, Lot Validation Testing is not required and shall only be performed if specifically stipulated in the Purchase Order.

For procurement of unqualified components the need for Lot Validation Testing shall be determined by the Orderer (ref. ESCC Basic Specification No. 23100).

When Lot Validation Testing is required, it shall consist of the performance of one or more of the tests or subgroup test sequences of Chart F4. The testing to be performed and the sample size shall be as stipulated in the Purchase Order.

When procurement of more than one component type is involved from a family, range or series, the selection of representative samples shall also be stipulated in the Purchase Order.

7.6 FAILURE CRITERIA

The following criteria shall apply to qualification, qualification maintenance and Lot Validation Testing.

7.6.1 Environmental and Mechanical Test Failures

The following shall be counted as component failures:-

Components which fail during tests for which the pass/fail criteria are inherent in the test method, e.g. Seal, Terminal Strength, etc.

7.6.2 Electrical Failures

The following shall be counted as component failures:

Components which fail one or more of the applicable limits at each of the relevant data points specified for environmental, mechanical and endurance testing in Intermediate and End-Point Electrical Measurements in the Detail Specification.

7.6.3 Other Failures

A component shall be counted as a failure in any of the following cases:

- Visual failure
- Mechanical failure
- Handling failure
- Lost component

7.7 FAILED COMPONENTS

A component shall be considered as failed if it exhibits one or more of the failure modes

detailed in Para. 7.6.

When requested by the ESCC Executive (for qualification, qualification maintenance or procurement of qualified components) or the Orderer (for procurement of qualified or unqualified components), failure analysis of failed components shall be performed under the responsibility of the Manufacturer and the results provided.

Failed components shall be retained at the Manufacturer's plant until the final disposition has been agreed and certified.

7.8 LOT FAILURE

For qualification and qualification maintenance, the lot shall be considered as failed if one component in any subgroup of Chart F4 is a failed component based on the criteria specified in Para. 7.6.

For procurement, the lot shall be considered as failed if one component in any test specified for Lot Validation Testing is a failed component based on the criteria specified in Para. 7.6.

In the case of lot failure, the Manufacturer shall act in accordance with Para. 4.3.3.

7.9 QUALIFICATION, QUALIFICATION MAINTENANCE AND LOT VALIDATION TESTING SAMPLES

All tests of Chart F4 are considered to be destructive and therefore components so tested shall not form part of the delivery lot.

7.10 DOCUMENTATION

Documentation of qualification, qualification maintenance and Lot Validation Testing shall be in accordance with Para. 9.8.

8. TEST METHODS AND PROCEDURES

If a Manufacturer elects to eliminate or modify a test method or procedure, the Manufacturer is still responsible for delivering components that meet all of the performance, quality and reliability requirements defined in this specification and the Detail Specification.

For a qualified component, documentation supporting the change shall be approved by the ESCC Executive and retained by the Manufacturer. It shall be copied, when requested, to the ESCC Executive. The change shall be specified in an appendix to the Detail Specification and in the PID.

For an unqualified component the change shall be approved by the Orderer. The change may be specified in an appendix to the Detail Specification at the request of the Manufacturer or Orderer, subject to the approval of the ESCC Executive.

8.1 INTERNAL VISUAL INSPECTION

ESCC Basic Specification No. 20400.

8.2 BOND STRENGTH, AND DIE SHEAR OR SUBSTRATE ATTACH STRENGTH

8.2.1 Bond Strength

MIL-STD-883 Test Method 2011

- Test condition C or D for thermo-compression, ultrasonic or wedge bonding.

- Test condition F for flip-chip bonding.
- Test condition G or H for beam lead bonding.

Test samples: For Special In-Process Controls the required test samples shall be selected at random from the lot of components accepted after Internal Visual Inspection.

For Qualification and Periodic Tests the required test samples shall be selected from the components in the Assembly Capability Subgroup of Chart F4.

Quantity of internal bond wires 8 or less; Test samples = 3, Test all bonds

Quantity of internal bond wires 9 to 24; Test samples = 2, Test all bonds

Quantity of internal bond wires 25 or more; Test samples = 2, Test 50% of bonds

If agreed by the ESCC Executive (for qualification or qualification maintenance) or the Orderer (for procurement) the test samples for Special In-Process Controls may have only passed the low magnification phase of the Internal Visual Inspection.

Individual separation forces and categories shall be recorded. A single failure shall be cause for lot failure.

8.2.2 Die Shear or Substrate Attach Strength

MIL-STD-883 Test Method 2019 or 2027

The same test samples submitted to Bond Strength shall be used. Individual separation forces and categories shall be recorded. A single failure shall be cause for lot failure.

8.3 SCANNING ELECTRON MICROSCOPE INSPECTION

ESCC Basic Specification No. 21400.

8.4 TOTAL DOSE RADIATION TESTING

ESCC Basic Specification No. 22900 to the total dose level specified in the Detail Specification or as stipulated in the Purchase Order.

8.5 HIGH TEMPERATURE STABILISATION BAKE

MIL-STD-883, Test Method 1008, Duration: 24 hours at maximum storage temperature rating specified in the Detail Specification.

8.6 TEMPERATURE CYCLING

MIL-STD-883, Test Method 1010. Test Condition: C.

8.7 PARTICLE IMPACT NOISE DETECTION (PIND)

Only applicable to devices with cavities.

MIL-STD-883, Test Method 2020, Test Condition A.

- 8.8 SEAL
- 8.8.1 Seal, Fine Leak
MIL-STD-883, Test Method 1014, Condition A or B.
- 8.8.2 Seal, Gross Leak
MIL-STD-883, Test Method 1014, Condition C.
- 8.9 ELECTRICAL MEASUREMENTS
- 8.9.1 Parameter Drift Values
At each of the relevant data points during Screening Tests, Parameter Drift Values shall be measured as specified in the Detail Specification. All values obtained shall be recorded against serial numbers and the parameter drift calculated.
- 8.9.2 High and Low Temperatures Electrical Measurements
High and Low Temperatures Electrical Measurements shall be performed as specified in the Detail Specification. All values obtained shall be recorded against serial numbers.
- 8.9.3 Room Temperature Electrical Measurements
Room Temperature Electrical Measurements shall be performed as specified in the Detail Specification. All values obtained shall be recorded against serial numbers.
- 8.9.4 Intermediate and End-Point Electrical Measurements
At each of the relevant data points during Qualification and Periodic Tests Intermediate and End-Point Electrical Measurements shall be performed as specified in the Detail Specification. All values obtained shall be recorded against serial numbers and the parameter drift calculated, if specified.
- 8.10 EXTERNAL VISUAL INSPECTION AND DIMENSION CHECK
External Visual Inspection shall be performed in accordance with ESCC Basic Specification No. 20500.

Dimension Check (during Special In-Process Controls only) shall be performed in accordance with ESCC Basic Specification No. 20500 and the Detail Specification on a sample of 3 components. In the event of any failure a 100% Dimension Check shall be performed.
- 8.11 MECHANICAL SHOCK
MIL-STD-883, Test Method 2002, Test Condition: B.
- 8.12 VIBRATION
MIL-STD-883, Test Method 2007, Test Condition: A.
- 8.13 CONSTANT ACCELERATION
MIL-STD-883, Test Method 2001, Test Condition: E (resultant centrifugal acceleration to be in the Y1 axis only). For components which have a package weight of 5 grammes or more, or whose inner seal or cavity perimeter is more than 5 cm, Condition D shall be used.

- 8.14 THERMAL SHOCK
MIL-STD-883, Test Method 1011, Test Condition C.
- 8.15 MOISTURE RESISTANCE
MIL-STD-883, Test Method 1004.
- 8.16 SOLDERABILITY
For procurement lots: 5 samples. A single failure shall be cause for lot failure.

MIL-STD-883, Test Method 2003, to be performed on all terminals.

Solderability testing may be performed on empty packages or electrical rejects. The test samples used must be of the same package type and must have been manufactured using the same process, at the same time and have been subjected to the same screening as the packages of the delivery lot with which they are associated.

For components with gold plated lead finish activated fluxes (RMA, RA and OA) may be used but shall be immediately cleaned off after dipping using an acceptable solvent.

Solderability testing is classed as destructive and therefore components so tested shall not form part of the delivery lot.
- 8.17 PERMANENCE OF MARKING
ESCC Basic Specification No. 24800.
- 8.18 TERMINAL STRENGTH
MIL-STD-883, Test Method 2004, Test Condition D for chip carrier packages or Test Condition B2 for all other packages. For Condition B2, 3 leads (excluding corner leads) or 10% of the leads (whichever is greater) shall be randomly selected on each component.
- 8.19 OPERATING LIFE
MIL-STD-883, Test Method 1005.
- Duration: 2000 hours.
 - Conditions: As specified in Operating Life in the Detail Specification.
 - Data Points
As specified in Intermediate and End-Point Electrical Measurements in the Detail Specification at 0 hours, 1000 ± 48 hours and 2000 ± 48 hours. If drift values are specified, the drift shall always be related to the 0-hour measurement.
- 8.20 HIGH TEMPERATURE REVERSE BIAS BURN-IN
- MIL-STD-883, Test Method 1015, Test Condition A.
 - Duration and Test Conditions
As specified, where applicable, in High Temperature Reverse Bias Burn-in in the Detail

Specification.

- Data Points
As specified in the Parameter Drift Values in the Detail Specification at 0 hours (initial) and T (+24 - 0) hours (where T is the specified duration). Drift shall be related to the initial measurement.

8.21 POWER BURN-IN

MIL-STD-883, Test Method 1015 Test Condition B, D or E.

- Duration
Unless otherwise specified in the Detail Specification, components shall be subjected to a total Power Burn-in period of 240 (+24 -0) hours.
- Test Conditions
As specified in Power Burn-in in the Detail Specification.
The alternative temperature and time combinations per MIL-STD-883 Test Method 1015 are permissible provided that the maximum operating ratings for a component are not exceeded.
- Data Points
As specified in Parameter Drift Values in the Detail Specification at T (+24 -0) hours (where T is the specified duration).

If High Temperature Reverse Bias Burn-in is not being performed, the 0 hours (initial) measurement is also required. Drift shall be related to the initial measurement for Power Burn-in.

9. DATA DOCUMENTATION

9.1 GENERAL

For the qualification, qualification maintenance and procurement for each lot a data documentation package shall exist in a printed or electronic form.

This package shall be compiled from:

- (a) Cover sheet (or sheets).
- (b) List of equipment (testing and measuring).
- (c) List of test references.
- (d) Wafer Lot Acceptance data (Chart F2).
- (e) Special In-Process Controls data (Chart F2).
- (f) Screening Tests data (Chart F3).
- (g) Qualification and Periodic Tests data including Lot Validation Testing data (when applicable) (Chart F4).
- (h) Failed components list and failure analysis report (when applicable).
- (i) Certificate of Conformity.

Items (a) to (i) inclusive shall be grouped, preferably as subpackages and, for identification purposes, each page shall include the following information:

- ESCC Component Number.
- Manufacturer's name.

- Lot identification.
- Date of establishment of the document.
- Page number.

Whenever possible, documentation should preferably be available in electronic format suitable for reading using a compatible PC. The format supplied shall be legible, durable and indexed. The preferred storage medium is CD-ROM and the preferred file format is PDF.

9.1.1 Qualification and Qualification Maintenance

In the case of qualification or qualification maintenance, the items listed in Para. 9.1(a) to (i) are required.

9.1.2 Component Procurement and Delivery

For all deliveries of components procured to this specification, the following documentation shall be supplied:

- (a) Cover sheet (if all of the information is not included on the Certificate of Conformity).
- (b) Certificate of Conformity (including range of delivered serial numbers).

9.1.3 Additional Documentation

The Manufacturer shall deliver additional documentation containing data and reports to the Orderer, if stipulated in the Purchase Order.

9.1.4 Data Retention/Data Access

If not delivered, all data shall be retained by the Manufacturer for a minimum of 5 years during which time it shall be available for review, if requested, by the Orderer or the ESCC Executive (for qualified components).

9.2 COVER SHEET(S)

The cover sheet(s) of the data documentation package shall include as a minimum:

- (a) Reference to the Detail Specification, including issue and date.
- (b) Reference to the applicable ESCC Generic Specification, including issue and date.
- (c) ESCC Component Number and the Manufacturer's part type number.
- (d) Lot identification.
- (e) Range of delivered serial numbers.
- (f) Number of the Purchase Order.
- (g) Radiation testing level (if applicable).
- (h) Information relative to any additions to this specification and/or the Detail Specification.
- (i) Manufacturer's name and address.
- (j) Location of the manufacturing plant (specify place of diffusion, assembly and test).
- (k) Signature on behalf of Manufacturer.
- (l) Total number of pages of the data package.

9.3 LIST OF EQUIPMENT USED

A list of equipment used for tests and measurements shall be prepared. Where applicable, this list shall contain inventory number, Manufacturer's type number, serial number, etc. This list shall indicate for which tests such equipment was used.

9.4 LIST OF TEST REFERENCES

This list shall include all Manufacturer's references or codes which are necessary to correlate the test data provided with the applicable tests specified in the tables of the Detail Specification.

9.5 WAFER LOT ACCEPTANCE DATA (CHART F2)

Data of SEM Inspection shall be prepared in accordance with the requirements of ESCC Basic Specification No. 21400.

Total dose radiation test report shall be prepared in accordance with the requirements of ESCC Basic Specification No. 22900 (if specified).

9.6 SPECIAL IN-PROCESS CONTROLS DATA (CHART F2)

A test result summary shall be compiled showing the total number of components submitted to, and the total number rejected after each of the tests. For the Bond Strength and either Die Shear or Substrate Attach Strength tests, the separation forces and categories shall be recorded.

9.7 SCREENING TESTS DATA (CHART F3)

A test result summary shall be compiled showing the total number of components submitted to and the total number rejected after each of the tests. For each test requiring electrical measurements the results shall be recorded against component serial number. Component drift calculations shall be recorded for each specified test against component serial number.

9.8 QUALIFICATION AND PERIODIC TESTS DATA (CHART F4)

9.8.1 Qualification Testing

A test result summary shall be compiled showing the components submitted to, and the number rejected after each test in each subgroup. Component serial numbers for each subgroup shall be identified. For each test requiring electrical measurements the results shall be recorded against component serial number. Where a drift value is specified during a test the drift calculation shall be recorded against component serial number.

9.8.2 Periodic Testing for Qualification Maintenance

A test result summary shall be compiled showing the components submitted to and the number rejected after each test in each subgroup. Component serial numbers for each subgroup shall be identified. For each test requiring electrical measurements the results shall be recorded against component serial number. Where a drift value is specified during a test the drift calculation shall be recorded against component serial number.

In addition to the full test data a report shall be compiled for each subgroup of Chart F4 to act as the most recent Periodic Testing summary. These reports shall include a list of all tests performed in each subgroup, the ESCC Component Numbers and quantities of components tested, a statement confirming all the results were satisfactory, the date the tests were performed and a reference to the full test data.

9.8.3 Lot Validation Testing

A test result summary shall be compiled showing the components submitted to and the number rejected after each test in each subgroup (as applicable). Component serial numbers for each subgroup shall be identified. For each test requiring electrical measurements the results shall be recorded against component serial number. Where a drift value is specified during a test the drift calculation shall be recorded against component serial number.

9.9 **FAILED COMPONENTS LIST AND FAILURE ANALYSIS REPORT**

The failed components list and failure analysis report shall provide full details of:

- (a) The reference and description of the test or measurement performed as defined in this specification and/or the Detail Specification during Wafer Lot Acceptance, Special In-Process Controls, Screening Tests and Qualification and Periodic Tests.
- (b) Traceability information including serial number (if applicable) of the failed component.
- (c) The failed parameter and the failure mode of the component.
- (d) Detailed failure analysis (if requested by the ESCC Executive or Orderer).

9.10 **CERTIFICATE OF CONFORMITY**

A Certificate of Conformity shall be established in accordance with the requirements of ESCC Basic Specification Nos. 20100, 24300 or 25400.

10. **DELIVERY**

For procurement, for each order, the items forming the delivery are:

- (a) The delivery lot.
- (b) The components used for Lot Validation Testing (as applicable), but not forming part of the delivery lot, if stipulated in the Purchase Order.
- (c) The relevant documentation in accordance with the requirements of Paras. 9.1.2 and 9.1.3.

In the case of a component for which a valid qualification is in force, all data of all components submitted to Lot Validation Testing shall also be copied, when requested, to the ESCC Executive.

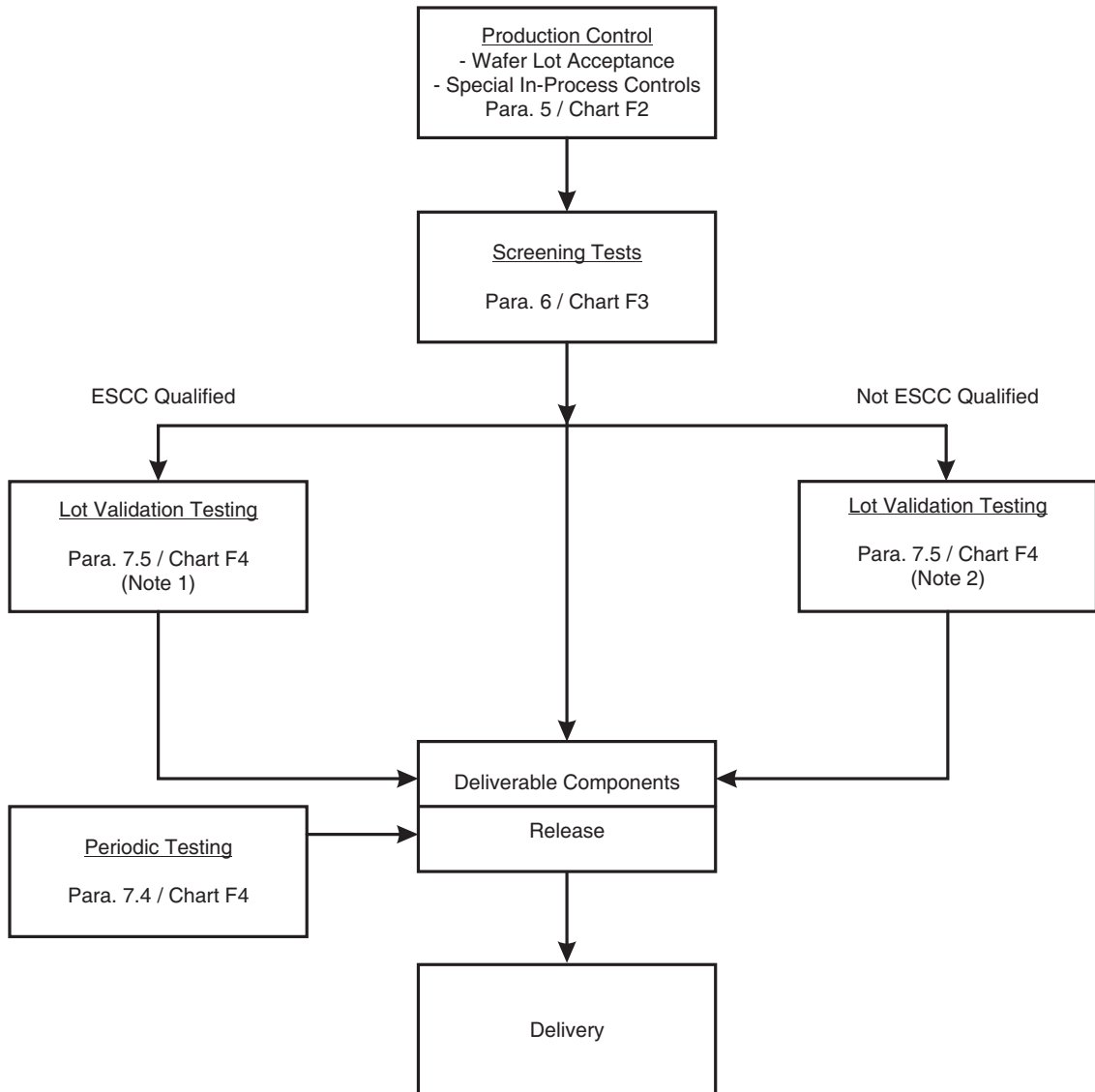
For qualification or qualification maintenance, the disposition of the Qualification Test Lot and its related documentation shall be as specified in ESCC Basic Specification Nos. 20100, 24300 or 25400 and the relevant paragraphs of Section 9 of this specification.

11. **PACKAGING AND DISPATCH**

The packaging and dispatch of components to this specification shall be in accordance with the requirements of ESCC Basic Specification No. 20600.

12. **CHARTS**

12.1 **CHART F1 - GENERAL FLOW FOR PROCUREMENT**

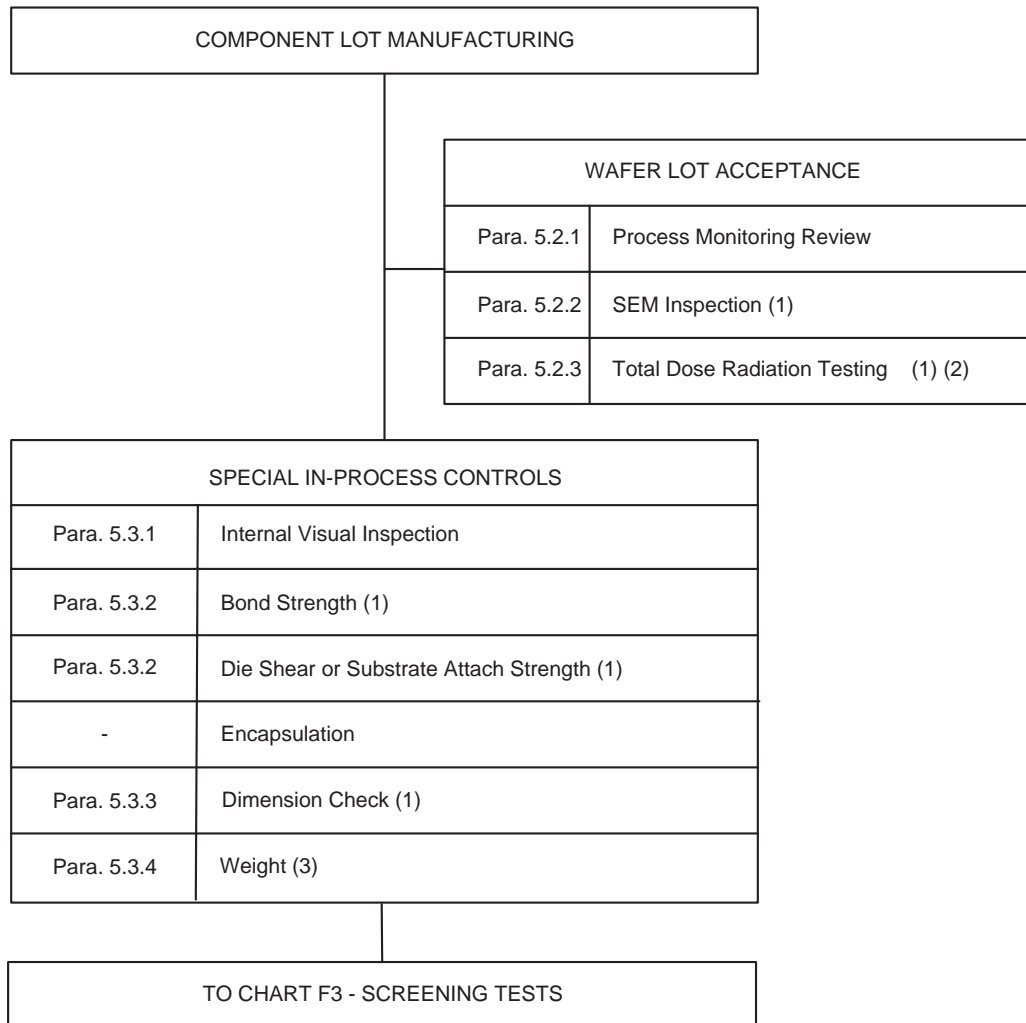


NOTES:

1. Lot Validation Testing is not required for qualified components unless specifically stipulated in the Purchase Order.
2. For unqualified components the need for Lot Validation Testing shall be determined by the Orderer

and the required testing shall be as stipulated in the Purchase Order (ref. ESCC Basic Specification No. 23100).

12.2 CHART F2 - PRODUCTION CONTROL



NOTES:

1. Performed on a sample basis.
2. If specified in the Detail Specification and stipulated in the Purchase Order.
3. Guaranteed but not tested.

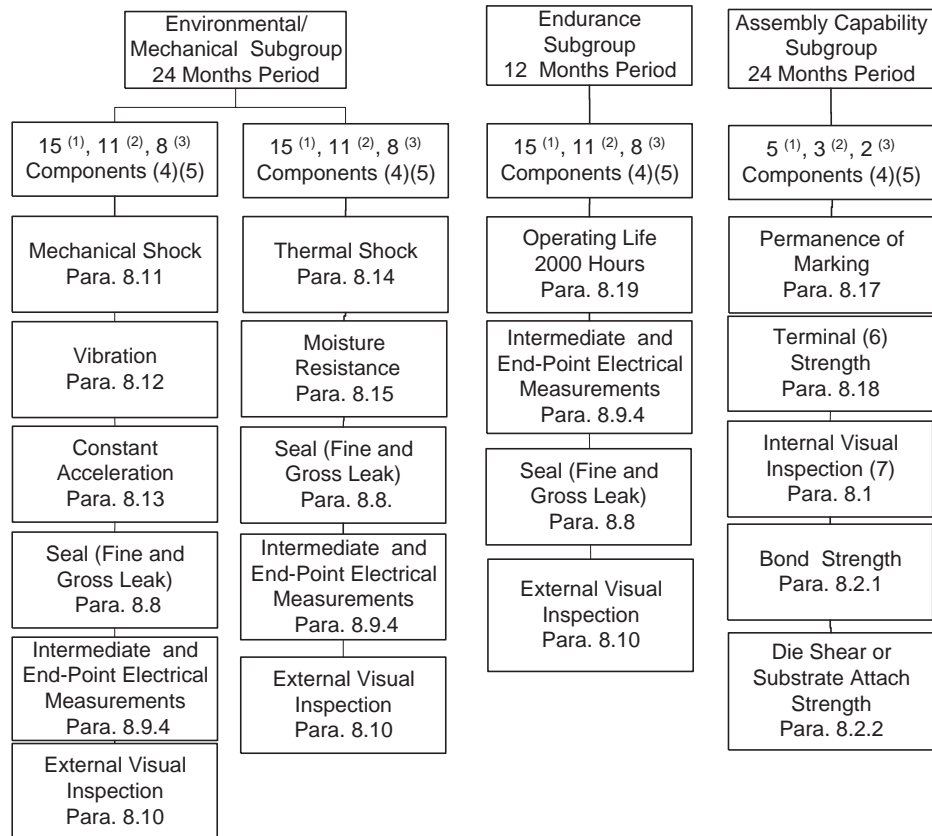
12.3 CHART F3 - SCREENING TESTS

COMPONENTS FROM PRODUCTION CONTROL	
Para. 6.1	Serialisation
Para. 8.6	Temperature Cycling
Para. 8.7	Particle Impact Noise Detection (PIND)
Para. 8.9.1	Parameter Drift Values (Initial Measurements)
Para. 8.20	High Temperature Reverse Bias Burn-in
Para. 8.9.1	Parameter Drift Values (Final Measurements for HTRB Burn-in, Initial Measurements for Power Burn-in) (1)
Para. 8.21	Power Burn-in
Para. 8.9.1	Parameter Drift Values (Final Measurements) (1)
Para. 8.9.2	High and Low Temperatures Electrical Measurements (1)
-	Hot Solder Dip (if applicable) (2)
Para. 8.9.3	Room Temperature Electrical Measurements (1) (3)
Para. 6.4.1	Check for Lot Failure (4)
Para. 8.8	Seal (Fine and Gross Leak)
Para. 8.10	External Visual Inspection
Para. 8.16	Solderability (1) (5)
TO CHART F4 WHEN APPLICABLE	

NOTES:

1. The lot failure criteria of Para. 6.4 apply to this test.
2. For components with hot solder dip final lead finish the hot solder dip processing shall be performed at any time prior to Room Temperature Electrical Measurements during Screening Tests. The requirements for hot solder dip are specified in ESCC Basic Specification No. 23500.
3. Measurements of Parameter Drift Values need not be repeated in Room Temperature Electrical Measurements.
4. Check for Lot Failure shall take into account all electrical parameter failures that may occur during Screening Tests in accordance with Para. 8.9.1, 8.9.2, 8.9.3 subsequent to HTRB Burn-in.
5. Performed on a sample basis.

12.4 CHART F4 - QUALIFICATION AND PERIODIC TESTS



NOTES:

1. Single type (see Para. 7.1.2.1)
2. Per type for two types selected (see Para. 7.1.2.2)
3. Per type for three or more types selected (see Para. 7.1.2.2)
4. For distribution within the subgroups, see Para. 7.1.2 for qualification and qualification maintenance, and Para. 7.5 for Lot Validation Testing.
5. No failures are permitted.
6. May be done at the beginning or the end of the subgroup, depending on package configuration.
7. The components shall be deencapsulated using suitable means to facilitate Internal Visual Inspection, Bond Strength and either Die Shear or Substrate Attach Strength.