



Pages 1 to 27

RESISTORS, HEATERS, FLEXIBLE

ESCC Generic Specification No. 4009

Issue 4	January 2010
---------	--------------



Document Custodian: European Space Agency - see <https://escies.org>

LEGAL DISCLAIMER AND COPYRIGHT

European Space Agency, Copyright © 2010. All rights reserved.

The European Space Agency disclaims any liability or responsibility, to any person or entity, with respect to any loss or damage caused, or alleged to be caused, directly or indirectly by the use and application of this ESCC publication.

This publication, without the prior permission of the European Space Agency and provided that it is not used for a commercial purpose, may be:

- copied in whole, in any medium, without alteration or modification.
- copied in part, in any medium, provided that the ESCC document identification, comprising the ESCC symbol, document number and document issue, is removed.

DOCUMENTATION CHANGE NOTICE

(Refer to <https://escies.org> for ESCC DCR content)

DCR No.	CHANGE DESCRIPTION
531	Specification upissued to incorporate editorial changes per DCR.

TABLE OF CONTENTS

<u>1.</u>	<u>INTRODUCTION</u>	<u>7</u>
1.1	Scope	7
1.2	Applicability	7
<u>2.</u>	<u>APPLICABLE DOCUMENTS</u>	<u>7</u>
2.1	ESCC Specifications	7
2.2	Other (Reference) Documents	8
2.3	Order of Precedence	8
<u>3.</u>	<u>TERMS, DEFINITIONS, ABBREVIATIONS, SYMBOLS AND UNITS</u>	<u>8</u>
<u>4.</u>	<u>REQUIREMENTS</u>	<u>8</u>
4.1	General	8
4.1.1	Specifications	8
4.1.2	Conditions and Methods of Test	9
4.1.3	Manufacturer's Responsibility for Performance of Tests and Inspections	9
4.1.4	Inspection Rights	9
4.2	Qualification and Qualification Maintenance Requirements on a Manufacturer	9
4.3	Deliverable Components	9
4.3.1	ESCC Qualified Components	9
4.3.2	ESCC Components	9
4.3.3	Lot Failure	9
4.4	Marking	10
4.5	Materials and Finishes	10
4.5.1	Terminal Leads Requirements	10
<u>5.</u>	<u>PRODUCTION CONTROL</u>	<u>10</u>
5.1	General	10
5.2	Special In-Process Controls	10
5.2.1	Robustness of Terminations	10
5.2.2	Dimension Check	11
5.2.3	Weight	11
5.2.4	Documentation	11
<u>6.</u>	<u>SCREENING TESTS</u>	<u>11</u>
6.1	General	11
6.2	Failure Criteria	11
6.2.1	Environmental and Mechanical Test Failure	11
6.2.2	Parameter Limit Failure	11
6.2.3	Other Failures	11
6.3	Failed Components	12
6.4	Lot Failure	12
6.4.1	Lot Failure during 100% Testing	12
6.4.2	Lot Failure during Sample Testing	12
6.5	Documentation	12
<u>7.</u>	<u>QUALIFICATION, QUALIFICATION MAINTENANCE AND LOT VALIDATION TESTING</u>	<u>12</u>
7.1	Qualification Testing	12
7.1.1	General	12
7.1.2	Distribution within the Qualification Test Lot	13
7.2	Qualification within a Technology Flow	13
7.3	Qualification Maintenance (Periodic Testing)	13

7.4	Lot Validation Testing	13
7.5	Failure Criteria	13
7.5.1	Environmental and Mechanical Test Failures	13
7.5.2	Electrical Failures	13
7.5.3	Other Failures	14
7.6	Failed Components	14
7.7	Lot Failure	14
7.8	Qualification, Qualification Maintenance and Lot Validation Testing Samples	14
7.9	Documentation	14
8.	<u>TEST METHODS AND PROCEDURES</u>	<u>14</u>
8.1	Electrical Measurements	15
8.1.1	General	15
8.1.1.1	Resistance	15
8.1.1.2	Insulation Resistance	15
8.1.1.3	Voltage Proof	16
8.1.2	High and Low Temperatures Electrical Measurements	16
8.1.3	Room Temperature Electrical Measurements	16
8.1.4	Intermediate and End-Point Electrical Measurements	16
8.2	Rapid Change of Temperature	16
8.3	Overload	17
8.4	Burn-in	17
8.5	External Visual Inspection and Dimension Check	17
8.6	Robustness of Terminations	18
8.7	Climatic Sequence	18
8.7.1	Initial Measurements	18
8.7.2	Dry Heat	18
8.7.3	Damp Heat (First Cycle)	18
8.7.4	Cold	18
8.7.5	Low Air Pressure	19
8.7.6	Damp Heat (Remaining Cycles)	19
8.7.7	DC Load	19
8.7.8	Final Measurements	19
8.8	Operating Life	19
8.9	Permanence of Marking	20
9.	<u>DATA DOCUMENTATION</u>	<u>20</u>
9.1	General	20
9.1.1	Qualification and Qualification Maintenance	20
9.1.2	Component Procurement and Delivery	20
9.1.3	Additional Documentation	21
9.1.4	Data Retention/Data Access	21
9.2	Cover Sheet(s)	21
9.3	List of Equipment Used	21
9.4	List of Test References	21
9.5	Special In-Process Controls Data (Chart F2)	21
9.6	Screening Tests Data (Chart F3)	21
9.7	Qualification and Periodic Tests Data (Chart F4)	22
9.7.1	Qualification Testing	22
9.7.2	Periodic Testing for Qualification Maintenance	22
9.7.3	Lot Validation Testing	22
9.8	Failed Components List and Failure Analysis Report	22
9.9	Certificate Of Conformity	22



<u>10.</u>	<u>DELIVERY</u>	<u>22</u>
<u>11.</u>	<u>PACKAGING AND DISPATCH</u>	<u>23</u>
<u>12.</u>	<u>CHARTS</u>	<u>24</u>
12.1	Chart F1 - General Flow For Procurement	24
12.2	Chart F2 - Production Control	25
12.3	Chart F3 - Screening Tests	26
12.4	Chart F4 - Qualification and Periodic Tests	27

1. **INTRODUCTION**

1.1 **SCOPE**

This specification defines the general requirements for the qualification, qualification maintenance, procurement, and delivery of flexible heaters for space applications. This specification contains the appropriate inspection and test schedules and also specifies the data documentation requirements.

1.2 **APPLICABILITY**

This specification is primarily applicable to the granting of qualification approval to components qualified in accordance with one of the following ESCC methods:

- Qualification of Standard Components per ESCC Basic Specification No. 20100.
- Technology Flow Qualification per ESCC Basic Specification No. 25400.

It is also primarily applicable to the procurement of components so qualified.

This specification may also be applied to the procurement of unqualified components, recommendations for which are given in ESCC Basic Specification No. 23100.

2. **APPLICABLE DOCUMENTS**

The following documents form part of, and shall be read in conjunction with, this specification. The relevant issues shall be those in effect on the date of starting qualification or placing the Purchase Order.

2.1 **ESCC SPECIFICATIONS**

- No. 20100, Requirements for the Qualification of Standard Electronic Components for Space Application.
- No. 20500, External Visual Inspection.
- No. 20600, Preservation, Packaging and Dispatch of ESCC Components.
- No. 21300, Terms, Definitions, Abbreviations, Symbols and Units.
- No. 21700, General Requirements for the Marking of ESCC Components.
- No. 22800, ESCC Non-Conformance Control System.
- No. 23100, Recommendations on the use of the ESCC Specification System for the Evaluation and Procurement of Unqualified Components.
- No. 23500, Lead Materials and Finishes for Components for Space Application.
- No. 24600, Minimum Quality System Requirements.
- No. 24800, Resistance to Solvents of Marking, Materials and Finishes.
- No. 25400, Requirements for the Technology Flow Qualification of Electronic Components for Space Application.

For qualification and qualification maintenance or procurement of qualified components, with the exception of ESCC Basic Specifications Nos. 20100, 21700, 22800, 24600 and 25400, where Manufacturers' specifications are equivalent to, or more stringent than, the ESCC Basic Specifications listed above, they may be used in place of the latter, subject to the approval of the ESCC Executive.

Such replacements shall be clearly identified in the applicable Process Identification Document (PID).

For procurement of unqualified components, where Manufacturers' specifications are equivalent to or more stringent than the applicable ESCC Basic Specifications listed above, they may be used in place of the latter subject to the approval of the Orderer.

Such replacements may be listed in an appendix to the appropriate Detail Specification at the request of

the Manufacturer or Orderer, subject to the approval of the ESCC Executive.

Unless otherwise stated herein, references within the text of this specification to "the Detail Specification" shall mean the relevant ESCC Detail Specification.

2.2 OTHER (REFERENCE) DOCUMENTS

- REP005, ESCC Qualified Parts List.
- ECSS-Q-ST-70-02, Thermal Vacuum Test for the Screening of Space Materials.
- IEC Publication No. 60068 Part 2, Basic Environmental Testing Procedures.
- IEC Publication No. 60115 Part 1, Generic Specification for Fixed Resistors for Use in Electronic Equipment.

2.3 ORDER OF PRECEDENCE

For the purpose of interpretation and in case of conflict with regard to documentation, the following order of precedence shall apply:

- (a) ESCC Detail Specification.
- (b) ESCC Generic Specification.
- (c) ESCC Basic Specification.
- (d) Other documents, if referenced herein.

3. **TERMS, DEFINITIONS, ABBREVIATIONS, SYMBOLS AND UNITS**

The terms, definitions, abbreviations, symbols and units specified in ESCC Basic Specification No. 21300 shall apply.

4. **REQUIREMENTS**

4.1 GENERAL

The requirements for the qualification of a component shall be in accordance with ESCC Basic Specification No. 20100.

The requirements for Technology Flow Qualification and the listing of qualified component types shall be in accordance with ESCC Basic Specification No. 25400.

The test requirements for procurement of both qualified and unqualified components (see Chart F1) shall comprise:

- Special In-Process Controls.
- Screening Tests.
- Periodic Testing (for qualified components only).
- Lot Validation Testing if stipulated in the Purchase Order.

4.1.1 Specifications

For qualification, qualification maintenance, procurement and delivery of components in conformity with this specification, the applicable specifications listed in Section 2 of this document shall apply in total unless otherwise specified herein or in the Detail Specification.

4.1.2 Conditions and Methods of Test

The conditions and methods of test shall be in accordance with this specification, the ESCC Basic Specifications referenced herein and the Detail Specification.

4.1.3 Manufacturer's Responsibility for Performance of Tests and Inspections

The Manufacturer shall be responsible for the performance of tests and inspections required by the applicable specifications. These tests and inspections shall be performed at the plant of the Manufacturer of the components unless it is agreed by the ESCC Executive (for qualification, qualification maintenance, or procurement of qualified components) or the Orderer (for procurement of unqualified components), to use an approved external facility.

4.1.4 Inspection Rights

The ESCC Executive (for qualification, qualification maintenance, or procurement of qualified components) or the Orderer (for procurement of unqualified components if stipulated in the Purchase Order) reserves the right to monitor any of the tests and inspections scheduled in the applicable specifications.

4.2 QUALIFICATION AND QUALIFICATION MAINTENANCE REQUIREMENTS ON A MANUFACTURER

To obtain and maintain the qualification of a component, or family of components, a Manufacturer shall satisfy the requirements of ESCC Basic Specification No. 20100.

To obtain and maintain the qualification of a component produced using a qualified Technology Flow, a Manufacturer shall satisfy the requirements of ESCC Basic Specification No. 25400.

4.3 DELIVERABLE COMPONENTS

4.3.1 ESCC Qualified Components

Components delivered to this specification shall be processed and inspected in accordance with the relevant Process Identification Document (PID).

4.3.2 ESCC Components

Each component, irrespective of qualification status, identified with an ESCC component number and delivered to this specification shall:

- be traceable to its production lot.
- have satisfactorily completed all the tests required by the relevant issues of the applicable specifications.
- be produced from lots that are considered by the Manufacturer to be capable of passing all applicable tests, and sequences of tests, that are defined in Chart F4. The Manufacturer shall not knowingly supply components that cannot meet this requirement. In the event that, subsequent to delivery and prior to operational use, a component is found to be in a condition such that, demonstrably, it could not have passed these tests at the time of manufacture, this shall be grounds for rejection of the delivered lot.

4.3.3 Lot Failure

Lot failure may occur during Screening Tests (Chart F3) or Qualification and Periodic Tests (Chart F4).

Should such failure occur during qualification, qualification maintenance or procurement of qualified components the Manufacturer shall initiate the non-conformance procedure in accordance with ESCC

Basic Specification No. 22800. The Manufacturer shall notify the Orderer and the ESCC Executive by any appropriate written means, within 5 working days, giving details of the number and mode of failure and the suspected cause. No further testing or analysis shall be performed on the failed components until so instructed by the ESCC Executive.

Should such failure occur during procurement of unqualified components the Manufacturer shall notify the Orderer by any appropriate written means within 5 working days, giving details of the number and mode of failure and the suspected cause. No further testing or analysis shall be performed on the failed components until so instructed by the Orderer. The Orderer shall inform the Manufacturer within 5 working days of receipt of notification what action shall be taken.

4.4 MARKING

All components procured and delivered to this specification shall be marked in accordance with ESCC Basic Specification No. 21700.

4.5 MATERIALS AND FINISHES

Specific requirements for materials and finishes are specified in the Detail Specification. Where a definite material or finish is not specified a material or finish shall be used so as to ensure that the component meets the performance requirements of this specification and the Detail Specification. Acceptance or approval of any constituent material or finish does not guarantee acceptance of the finished product.

All non-metallic materials and finishes of the components specified in the Detail Specification shall meet the outgassing requirements as outlined in ECSS-Q-ST-70-02.

4.5.1 Terminal Leads Requirements

Terminal leads shall be as specified in the applicable ESCC Detail Specification for wire as referenced in the heater ESCC Detail Specification. The wire shall be ESCC Qualified as evidenced by a listing in the current ESCC Qualified Parts List REP005.

5. PRODUCTION CONTROL

5.1 GENERAL

Unless otherwise specified herein or in the Detail Specification, all lots of components used for qualification and qualification maintenance, Lot Validation Testing and for delivery shall be subject to tests and inspections in accordance with Chart F2 in the sequence shown.

Any components which do not meet these requirements shall be removed from the lot and at no future time be resubmitted to the requirements of this specification.

The applicable test requirements are detailed in the paragraphs referenced in Chart F2.

For qualified components the full production control provisions are defined in the PID.

5.2 SPECIAL IN-PROCESS CONTROLS

5.2.1 Robustness of Terminations

Robustness of Terminations shall be performed in accordance with Para. 8.6 and the Detail Specification

on a 100% basis.

5.2.2 Dimension Check

Dimension Check shall be performed in accordance with Para. 8.5 on 3 samples only.

In the event of any failure a 100% Dimension Check shall be performed.

5.2.3 Weight

The maximum weight of the component specified in the Detail Specification shall be guaranteed but not tested.

5.2.4 Documentation

Documentation of Special In-Process Controls shall be in accordance with Para. 9.5.

6. SCREENING TESTS

6.1 GENERAL

Unless otherwise specified herein or in the Detail Specification, all lots of components used for qualification and qualification maintenance, Lot Validation Testing and for delivery shall be subjected to tests and inspections in accordance with Chart F3 in the sequence shown.

Any components which do not meet these requirements shall be removed from the lot and at no future time be resubmitted to the requirements of this specification.

The applicable test methods and conditions are specified in the paragraphs referenced in Chart F3.

6.2 FAILURE CRITERIA

6.2.1 Environmental and Mechanical Test Failure

The following shall be counted as component failures:

- Components which fail during tests for which the pass/fail criteria are inherent in the test method, i.e. Overload, External Visual Inspection.

6.2.2 Parameter Limit Failure

A component shall be counted as a limit failure if one or more parameters exceed the limits shown in Room Temperature Electrical Measurements or High and Low Temperatures Electrical Measurements in the Detail Specification.

Any component which exhibits a limit failure prior to the submission to Burn-in shall be rejected and not counted when determining lot rejection.

6.2.3 Other Failures

A component shall be counted as a failure in any of the following cases:

- Visual failure.
- Mechanical failure.
- Handling failure.

- Lost component.

6.3 FAILED COMPONENTS

A component shall be considered as a failed component if it exhibits one or more of the failure modes described in Para. 6.2.

6.4 LOT FAILURE

In the case of lot failure, the Manufacturer shall act in accordance with Para. 4.3.3.

6.4.1 Lot Failure during 100% Testing

If the number of components failed on the basis of the failure criteria specified in Para. 6.2.2 exceeds 5% (rounded upwards to the nearest whole number) of the components submitted to Burn-in in Chart F3, the lot shall be considered as failed.

If a lot is composed of groups of components of one family defined in one ESCC Detail Specification, but separately identifiable for any reason, then the lot failure criteria shall apply separately to each identifiable group.

6.4.2 Lot Failure during Sample Testing

A lot shall be considered as failed if the number of allowable failures during sample testing as specified herein or in the Detail Specification, is exceeded.

Unless otherwise specified, if a lot failure occurs a 100% testing may be performed but the cumulative percent defective shall not exceed that specified in Para. 6.4.1.

6.5 DOCUMENTATION

Documentation of Screening Tests shall be in accordance with Para. 9.6.

7. QUALIFICATION, QUALIFICATION MAINTENANCE AND LOT VALIDATION TESTING

The requirements of this paragraph are applicable to the tests performed on components or test structures as part of qualification or qualification maintenance in accordance with either ESCC Basic Specification No. 20100 or 25400 as applicable. They are also applicable to Lot Validation Testing as part of the procurement of qualified or unqualified components. All components shall be serialised prior to the tests and inspections.

7.1 QUALIFICATION TESTING

7.1.1 General

Qualification testing shall be in accordance with the requirements specified in Chart F4. The tests of Chart F4 shall be performed on the specified sample, chosen at random from components which have successfully passed the tests in Chart F3. This sample constitutes the Qualification Test Lot.

The Qualification Test Lot is divided into subgroups of tests and all components assigned to a subgroup shall be subjected to all of the tests in that subgroup, in the sequence shown. The applicable test requirements are detailed in the paragraphs referenced in Chart F4.

The conditions governing qualification testing are specified in ESCC Basic Specification No. 20100.

7.1.2 Distribution within the Qualification Test Lot

The Qualification Test Lot shall be comprised in accordance with the following provisions:

- 1/3 of the lot with the maximum resistive density.
- 1/3 of the lot with the average resistive density (10 to 30 Ohms/cm²).
- 1/3 of the lot of the double layer type with separate outputs.

The component types may be specified by, but in any case shall be agreed with, the ESCC Executive, prior to the commencement of qualification testing and the justification for the selection shall be declared in the qualification test report.

7.2 QUALIFICATION WITHIN A TECHNOLOGY FLOW

The qualification of a component produced using a qualified Technology Flow shall be in accordance with ESCC Basic Specification No. 25400.

7.3 QUALIFICATION MAINTENANCE (PERIODIC TESTING)

Qualification is maintained through periodic testing and the test requirements of Para. 7.1 shall apply. For each subgroup the sample size and the period between successive subgroup testing shall be as specified in Chart F4. The conditions governing qualification maintenance are specified in ESCC Basic Specification No. 20100.

Qualification of a component, produced using a qualified Technology Flow, is maintained by the maintenance of the Technology Flow Qualification itself in accordance with ESCC Basic Specification No. 25400.

7.4 LOT VALIDATION TESTING

For procurement of qualified components, Lot Validation Testing is not required and shall only be performed if specifically stipulated in the Purchase Order.

For procurement of unqualified components the need for Lot Validation Testing shall be determined by the Orderer (ref. ESCC Basic Specification No. 23100).

When Lot Validation Testing is required, it shall consist of the performance of one or more of the tests or subgroup test sequences of Chart F4. The testing to be performed and the sample size shall be as stipulated in the Purchase Order.

When procurement of more than one component type is involved from a family, range or series, the selection of representative samples shall also be stipulated in the Purchase Order.

7.5 FAILURE CRITERIA

The following criteria shall apply to qualification, qualification maintenance and Lot Validation Testing.

7.5.1 Environmental and Mechanical Test Failures

The following shall be counted as component failures:-

Components which fail during tests for which the pass/fail criteria are inherent in the test method, e.g. Robustness of Terminations.

7.5.2 Electrical Failures

The following shall be counted as component failures:

Components which fail one or more of the applicable limits at each of the relevant data points specified for environmental, mechanical and endurance testing in Intermediate and End-point Electrical Measurements in the Detail Specification.

7.5.3 Other Failures

A component shall be counted as a failure in any of the following cases:

- Visual failure.
- Mechanical failure.
- Handling failure.
- Lost component.

7.6 FAILED COMPONENTS

A component shall be considered as failed if it exhibits one or more of the failure modes detailed in Para. 7.5.

When requested by the ESCC Executive (for qualification, qualification maintenance or procurement of qualified components) or the Orderer (for procurement of qualified or unqualified components), failure analysis of failed components shall be performed under the responsibility of the Manufacturer and the results provided.

Failed components shall be retained at the Manufacturer's plant until the final disposition has been agreed and certified.

7.7 LOT FAILURE

For qualification and qualification maintenance, the lot shall be considered as failed if one component in any subgroup of Chart F4 is a failed component based on the criteria specified in Para. 7.5.

For procurement, the lot shall be considered as failed if one component in any test specified for Lot Validation Testing is a failed component based on the criteria specified in Para. 7.5.

In the case of lot failure, the Manufacturer shall act in accordance with Para. 4.3.3.

7.8 QUALIFICATION, QUALIFICATION MAINTENANCE AND LOT VALIDATION TESTING SAMPLES

The tests of Chart F4 are considered to be destructive and therefore components so tested shall not form part of the delivery lot.

7.9 DOCUMENTATION

Documentation of qualification, qualification maintenance and Lot Validation Testing shall be in accordance with Para. 9.7.

8. TEST METHODS AND PROCEDURES

If a Manufacturer elects to eliminate or modify a test method or procedure, the Manufacturer is still responsible for delivering components that meet all of the performance, quality and reliability requirements defined in this specification and the Detail Specification.

For a qualified component, documentation supporting the change shall be approved by the ESCC

Executive and retained by the Manufacturer. It shall be copied, when requested, to the ESCC Executive. The change shall be specified in an appendix to the Detail Specification and in the PID.

For an unqualified component the change shall be approved by the Orderer. The change may be specified in an appendix to the Detail Specification at the request of the Manufacturer or Orderer, subject to the approval of the ESCC Executive.

8.1 ELECTRICAL MEASUREMENTS

8.1.1 General

Electrical measurements and methods shall be as follows.

8.1.1.1 *Resistance*

Measurements of resistance shall be made by using a direct voltage of small magnitude for as short a time as practicable so that the temperature does not rise appreciably during measurement.

The resistance of terminal leads attached to the heaters shall be calculated and subtracted from the actual measurement. The terminal lead resistance shall be calculated from data found in the applicable wire specification. Additionally, for High and Low Temperatures Electrical Measurements the heaters and the whole length of their terminal leads shall be placed inside the temperature chamber. In this case, the terminal lead resistance, adjusted for temperature coefficient resistance, shall be subtracted from the actual measurement.

The Resistance limits at $+22 \pm 3$ °C are given in Room Temperature Electrical Measurements in the Detail Specification.

In the event of conflicting results, attributable to test voltages, the voltage specified in the following table shall be used for reference purposes.

Rated Resistance Rn (Ω)	Measuring Voltage V (+0-10)%
less than 10	0.1 (Note 1)
10 to 99	0.3
100 to 999	1
1000 to 9999	3

NOTES:

1. The accuracy of the measuring equipment shall be such that the error does not exceed 10% of the tolerance. Where the measurement forms part of a test sequence, it shall be possible to measure a change in resistance with an error not exceeding 10% of the maximum change permitted for that test.

8.1.1.2 *Insulation Resistance*

- Mounting
The heaters shall be clamped between 2 conducting plates connected together.
- Test Conditions

The insulation resistance shall be measured with a direct voltage of $500 \pm 50\text{V}$. The measurement shall be performed between all terminations of the heater connected together as one pole and the mounting device as the other pole; for heaters with more than one resistor, the measurement shall also be performed between each resistor, with each resistor having both terminations connected together to form one pole.

The voltage shall be applied for 1 minute or such shorter time as is necessary to obtain a stable reading. The insulation resistance shall be read at the end of that period and shall not be less than that specified in Room Temperature Electrical Measurements in the Detail Specification. There shall be no evidence of breakdown or flash-over.

8.1.1.3 *Voltage Proof*

- Mounting
The heaters shall be clamped between 2 conducting plates connected together.
- Test Conditions
A voltage as specified in Room Temperature Electrical Measurements in the Detail Specification shall be applied for a period of 60 ± 5 seconds between all terminations of the heater connected together as one pole and the mounting device as the other pole; for heaters with more than one resistor, the measurement shall also be performed between each resistor, with each resistor having both terminations connected together to form one pole. The voltage shall be applied gradually at a rate of approximately 100V/second. There shall be no evidence of breakdown or flash-over.

8.1.2 High and Low Temperatures Electrical Measurements

High and Low Temperatures Electrical Measurements shall be performed as specified in the Detail Specification. Measurements shall be performed during Screening Tests on a sample of 3 components. In the event of any failure a 100% inspection shall be performed.

8.1.3 Room Temperature Electrical Measurements

Room Temperature Electrical Measurements shall be performed as specified in the Detail Specification.

8.1.4 Intermediate and End-Point Electrical Measurements

At each of the relevant data points during Qualification and Periodic Tests Intermediate and End-Point Electrical Measurements shall be performed as specified in the Detail Specification. All values obtained shall be recorded against serial numbers and the parameter drift calculated, if specified.

8.2 RAPID CHANGE OF TEMPERATURE

The heaters shall be subjected to Test Na of IEC Publication No. 60068-2-14 with the following details:

- Mounting
The heaters shall be suspended by their terminal leads in still air.
- Test Conditions
The duration of exposure at the maximum and minimum storage temperature ratings as specified in the Detail Specification shall be 15 minutes each. The number of cycles shall be 10.
- Data Points
During the 10 exposures to high temperature, electrical continuity shall be checked. On completion of testing the heaters shall be subjected to standard atmospheric conditions for recovery until thermal equilibrium is reached, up to a maximum of 2 hours, prior to electrical measurements. Resistance shall be measured as specified in Room Temperature Electrical Measurements in the

Detail Specification.

8.3 OVERLOAD

Overload shall be performed during Screening Tests on a sample of 5 components with the following details:

In the event of any failure a 100% inspection shall be performed.

- Mounting
The heaters shall be suspended by their terminal leads in still air. Heaters shall be positioned such that one heater does not unduly influence the temperature of any other.
- Test Conditions
The ambient temperature shall be between +15 and + 35 °C.
The heaters shall be tested with a power of 1.5 times the rated power as specified in the Detail Specification for a period of 1 minute minimum.
Each layer of double layer heaters shall be tested successively for the period specified. Resistors of multiple resistor single layer heaters shall be tested simultaneously.
- Data Points
On completion of testing the heaters shall be subjected to standard atmospheric conditions for recovery until thermal equilibrium is reached, up to a maximum of 2 hours, prior to electrical measurements. Resistance shall be measured as specified in Room Temperature Electrical Measurements in the Detail Specification. Heaters shall be visually examined and there shall be no evidence of damage.

8.4 BURN-IN

Burn-in shall be performed in accordance with IEC Publication No. 60115-1, Clause 4.25 with the following details:

- Mounting
The heaters shall be suspended and connected by their terminal leads in still air. Heaters shall be positioned such that one heater does not unduly influence the temperature of any other.
- Test Conditions
As specified in Burn-in in the Detail Specification.
The duration of the burn-in shall be 168 (+24-0) hours.
Each layer of double layer heaters shall be tested successively for 84 hours.
Resistors of multiple resistor single layer heaters shall be tested simultaneously.
The voltage (dc or full-wave rectified ac with ripple less than 5%) shall be increased until either rated power density or the maximum rated operating temperature, both as specified in the Detail Specification, are reached.
The voltage shall be in cycles of 1.5 hours "ON" and 0.5 hours "OFF" (the "OFF" cycles are included in the test duration).
- Data Points
On completion of testing the heaters shall be subjected to standard atmospheric conditions for recovery until thermal equilibrium is reached, up to a maximum of 2 hours, prior to electrical measurements. Resistance shall be measured as specified in Room Temperature Electrical Measurements in the Detail Specification.

8.5 EXTERNAL VISUAL INSPECTION AND DIMENSION CHECK

External Visual Inspection shall be performed in accordance with ESCC Basic Specification No. 20500.

The heater surface shall be free of cuts or abrasions. The heaters shall not exhibit bubbles or delamination.

Dimension Check (during Special In-Process Controls only) shall be performed in accordance with ESCC Basic Specification No. 20500 and the Detail Specification on a sample of 3 components. In the event of any failure a 100% Dimension Check shall be performed.

8.6 ROBUSTNESS OF TERMINATIONS

The heaters shall be subjected to Test Ua1 of IEC Publication No. 60068-2-21 with the following details:

- Test Conditions
The strength and duration of the pull shall be as specified in the Detail Specification.
- Data Points
 - (a) During Special In-Process Controls: Not applicable.
 - (b) During Qualification and Periodic Tests: Resistance and Change in Resistance shall be measured as specified in Intermediate and End-Point Electrical Measurements in the Detail Specification both before and after the test. Change in Resistance shall be related to the initial measurements.

8.7 CLIMATIC SEQUENCE

8.7.1 Initial Measurements

Resistance shall be measured as specified in Intermediate and End-Point Electrical Measurements in the Detail Specification.

8.7.2 Dry Heat

The heaters shall be subjected to Test Ba of IEC Publication No. 60068-2-2 at the maximum storage temperature rating as specified in the Detail Specification for 2 hours.

On completion of testing the heaters shall be subjected to standard atmospheric conditions for recovery, for not less than 1 hour before being subjected to Damp Heat (First Cycle).

8.7.3 Damp Heat (First Cycle)

The heaters, suspended by their terminal leads, shall be subjected to Test Db, Severity a (40°C), Variant 2, of IEC Publication No. 60068-2-30, for one cycle of 24 hours. On completion of testing after recovery, the heaters shall be immediately subjected to Cold.

8.7.4 Cold

The heaters shall be subjected to Test Ad of IEC Publication No. 60068-2-1 at the minimum storage temperature rating as specified in the Detail Specification. After 1 hour of stabilisation at this temperature, the heaters shall be tested with rated power as specified in the Detail Specification for 45 minutes.

Each layer of double layer heaters shall be tested successively for the period specified.

Resistors of multiple resistor single layer heaters shall be tested simultaneously.

On completion of testing the heaters shall be removed from the chamber and subjected to standard atmospheric conditions for recovery for not less than 4 hours before being subjected to Low Air Pressure.

8.7.5 Low Air Pressure

The heaters, operated with rated power as specified in the Detail Specification, shall be subjected to Test M of IEC Publication No. 60068-2-13, using a pressure of 20 ± 1 mbar.

Each layer of double layer heaters shall be tested successively for the period specified.

Resistors of multiple resistor single layer heaters shall be tested simultaneously.

The test shall be performed at a temperature between $+15$ and $+35^{\circ}\text{C}$.

The duration of the test shall be 1 hour.

On completion of testing the heaters shall immediately be subjected to Damp Heat (Remaining Cycles).

8.7.6 Damp Heat (Remaining Cycles)

The heaters, suspended by their terminal leads, shall be subjected to Test Db, Severity a (40°C), Variant 2, of IEC Publication No. 60068-2-30 for 5 cycles of 24 hours.

On completion of testing the heaters shall be removed from the chamber and subjected to standard atmospheric conditions for recovery for 30 ± 5 minutes before being subjected to DC Load.

8.7.7 DC Load

The heaters, suspended and connected by their terminal leads in still air, shall be operated at rated power as specified in the Detail Specification for 1 minute.

Each layer of double layer heaters shall be tested successively for the period specified.

Resistors of multiple resistor single layer heaters shall be tested simultaneously.

On completion of testing the heaters shall be subjected to standard atmospheric conditions for recovery until thermal equilibrium is reached, up to a maximum of 2 hours, prior to electrical measurements.

8.7.8 Final Measurements

Resistance, Change in Resistance, Insulation Resistance and Voltage Proof shall be measured as specified in Intermediate and End-Point Electrical Measurements in the Detail Specification. Change in Resistance shall be related to the initial measurements.

8.8 OPERATING LIFE

Operating Life shall be performed in accordance with the following details:

- Mounting

The heaters shall be suspended and connected by their terminal leads in still air. Heaters shall be positioned such that one heater does not unduly influence the temperature of any other.

- Test Conditions

As specified in Operating Life in the Detail Specification.

The duration of Operating Life shall be 2000 ± 48 hours.

Each layer of double layer heaters shall be tested successively for 1000 ± 48 (2000 ± 48 hours total).

Resistors of multiple resistor single layer heaters shall be tested simultaneously.

The voltage (dc or full-wave rectified ac with ripple less than 5%) shall be increased until either rated power density or the maximum rated operating temperature, both as specified in the Detail Specification, are reached.

The voltage shall be in cycles of 1.5 hours "ON" and 0.5 hours "OFF" (the "OFF" cycles are included in the test duration).

- Data Points
As specified in Intermediate and End-Point Electrical Measurements in the Detail Specification at 0 hours, 1000±48 hours and 2000±48 hours.
If drift values are specified, the drift shall always be related to the 0-hour measurement.
At each data point the heaters shall be subjected to standard atmospheric conditions for recovery until thermal equilibrium is reached, up to a maximum of 2 hours, prior to electrical measurements.
After the 1000 hour measurement the heaters shall be returned to the test conditions. The interval between removal from and return to the test conditions for any heater shall not exceed 12 hours.

8.9 PERMANENCE OF MARKING
ESCC Basic Specification No. 24800.

9. DATA DOCUMENTATION

9.1 GENERAL

For the qualification, qualification maintenance and procurement for each lot a data documentation package shall exist in a printed or electronic form.

This package shall be compiled from:

- (a) Cover sheet (or sheets).
- (b) List of equipment (testing and measuring).
- (c) List of test references.
- (d) Special In-Process Controls data (Chart F2).
- (e) Screening Tests data (Chart F3).
- (f) Qualification and Periodic Tests data including Lot Validation Testing data (when applicable) (Chart F4).
- (g) Failed components list and failure analysis report (when applicable).
- (h) Certificate of Conformity.

Items (a) to (h) inclusive shall be grouped, preferably as subpackages and, for identification purposes, each page shall include the following information:

- ESCC Component Number.
- Manufacturer's name.
- Lot identification.
- Date of establishment of the document.
- Page number.

Whenever possible, documentation should preferably be available in electronic format suitable for reading using a compatible PC. The format supplied shall be legible, durable and indexed. The preferred storage medium is CD-ROM and the preferred file format is PDF.

9.1.1 Qualification and Qualification Maintenance

In the case of qualification or qualification maintenance, the items listed in Para. 9.1(a) to (h) are required.

9.1.2 Component Procurement and Delivery

For all deliveries of components procured to this specification, the following documentation shall be supplied:

- (a) Cover sheet (if all of the information is not included on the Certificate of Conformity).
- (b) Certificate of Conformity.

9.1.3 Additional Documentation

The Manufacturer shall deliver additional documentation containing data and reports to the Orderer, if stipulated in the Purchase Order.

9.1.4 Data Retention/Data Access

If not delivered, all data shall be retained by the Manufacturer for a minimum of 5 years during which time it shall be available for review, if requested, by the Orderer or the ESCC Executive (for qualified components).

9.2 COVER SHEET(S)

The cover sheet(s) of the data documentation package shall include as a minimum:

- (a) Reference to the Detail Specification, including issue and date.
- (b) Reference to the applicable ESCC Generic Specification, including issue and date.
- (c) ESCC Component Number and the Manufacturer's part type number.
- (d) Lot identification.
- (e) Number of the Purchase Order.
- (f) Information relative to any additions to this specification and/or the Detail Specification.
- (g) Manufacturer's name and address.
- (h) Location of the manufacturing plant.
- (i) Signature on behalf of Manufacturer.
- (j) Total number of pages of the data package.

9.3 LIST OF EQUIPMENT USED

A list of equipment used for tests and measurements shall be prepared. Where applicable, this list shall contain inventory number, Manufacturer's type number, serial number, etc. This list shall indicate for which tests such equipment was used.

9.4 LIST OF TEST REFERENCES

This list shall include all Manufacturer's references or codes which are necessary to correlate the test data provided with the applicable tests specified in the tables of the Detail Specification.

9.5 SPECIAL IN-PROCESS CONTROLS DATA (CHART F2)

A test result summary shall be compiled showing the total number of components submitted to, and the total number rejected after each of the tests.

9.6 SCREENING TESTS DATA (CHART F3)

A test result summary shall be compiled showing the total number of components submitted to, and the total number rejected after each of the tests.

9.7 QUALIFICATION AND PERIODIC TESTS DATA (CHART F4)

9.7.1 Qualification Testing

A test result summary shall be compiled showing the components submitted to and the number rejected after each test in each subgroup. Component serial numbers for each subgroup shall be identified. For each test requiring electrical measurements the results shall be recorded against component serial number. Where a drift value is specified during a test the drift calculation shall be recorded against component serial number.

9.7.2 Periodic Testing for Qualification Maintenance

A test result summary shall be compiled showing the components submitted to and the number rejected after each test in each subgroup. Component serial numbers for each subgroup shall be identified. For each test requiring electrical measurements the results shall be recorded against component serial number. Where a drift value is specified during a test the drift calculation shall be recorded against component serial number.

In addition to the full test data a report shall be compiled for each subgroup of Chart F4 to act as the most recent Periodic Testing summary. These reports shall include a list of all tests performed in each subgroup, the ESCC Component Numbers and quantities of components tested, a statement confirming all the results were satisfactory, the date the tests were performed and a reference to the full test data.

9.7.3 Lot Validation Testing

A test result summary shall be compiled showing the components submitted to and the number rejected after each test in each subgroup (as applicable). Component serial numbers for each subgroup shall be identified. For each test requiring electrical measurements the results shall be recorded against component serial number. Where a drift value is specified during a test the drift calculation shall be recorded against component serial number.

9.8 FAILED COMPONENTS LIST AND FAILURE ANALYSIS REPORT

The failed components list and failure analysis report shall provide full details of:

- (a) The reference and description of the test or measurement performed as defined in this specification and/or the Detail Specification during Special In-Process Controls, Screening Tests and Qualification and Periodic Tests.
- (b) Traceability information including serial number (if applicable) of the failed component.
- (c) The failed parameter and the failure mode of the component.
- (d) Detailed failure analysis (if requested by the ESCC Executive or Orderer).

9.9 CERTIFICATE OF CONFORMITY

A Certificate of Conformity shall be established in accordance with the requirements of ESCC Basic Specification Nos. 20100 or 25400.

10. DELIVERY

For procurement, for each order, the items forming the delivery are:

- (a) The delivery lot.
- (b) The components used for Lot Validation Testing (as applicable), but not forming part of the delivery lot, if stipulated in the Purchase Order.

(c) The relevant documentation in accordance with the requirements of Paras. 9.1.2 and 9.1.3.

In the case of a component for which a valid qualification is in force, all data of all components submitted to Lot Validation Testing shall also be copied, when requested, to the ESCC Executive.

For qualification or qualification maintenance, the disposition of the Qualification Test Lot and its related documentation shall be as specified in ESCC Basic Specification Nos. 20100 or 25400 and the relevant paragraphs of Section 9 of this specification.

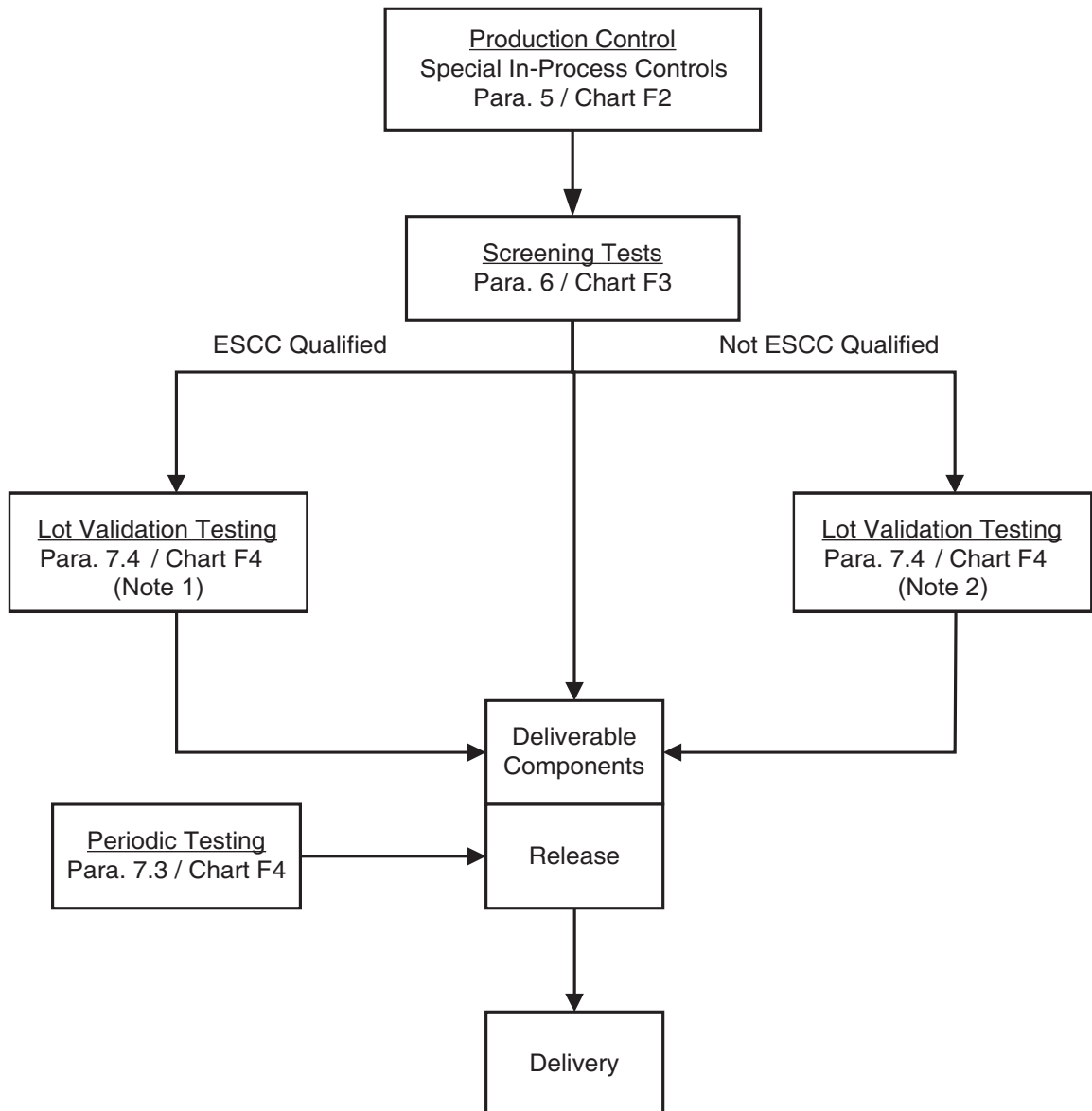
11.

PACKAGING AND DISPATCH

The packaging and dispatch of components to this specification shall be in accordance with the requirements of ESCC Basic Specification No. 20600.

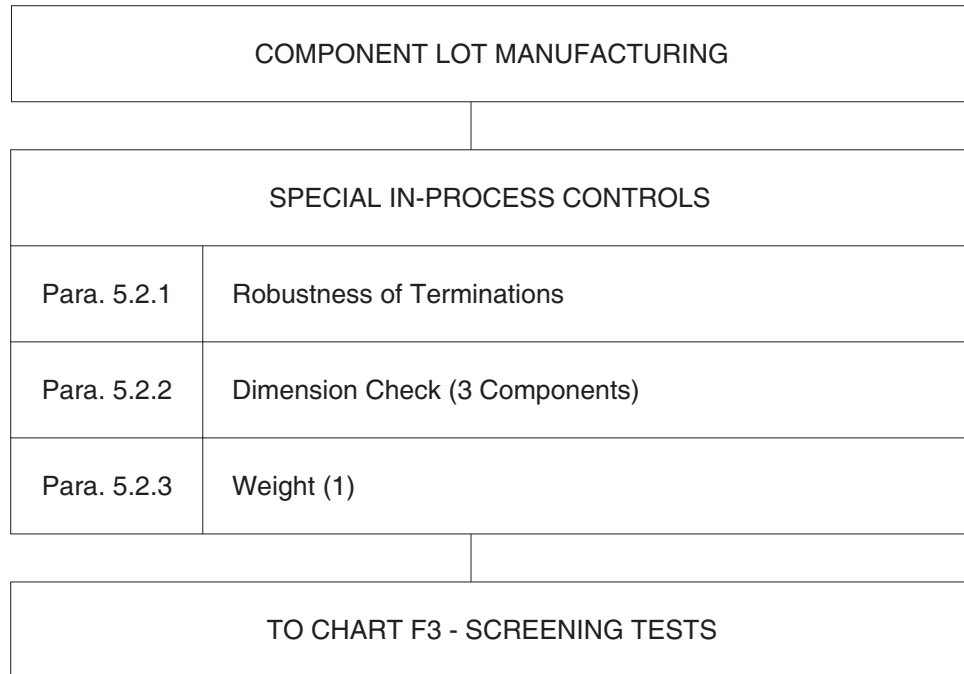
12. **CHARTS**

12.1 **CHART F1 - GENERAL FLOW FOR PROCUREMENT**



NOTES:

1. Lot Validation Testing is not required for qualified components unless specifically stipulated in the Purchase Order.
2. For unqualified components the need for Lot Validation Testing shall be determined by the Orderer and the required testing shall be as stipulated in the Purchase Order (ref. ESCC Basic Specification No. 23100).

12.2 CHART F2 - PRODUCTION CONTROL**NOTES:**

1. Guaranteed but not tested.

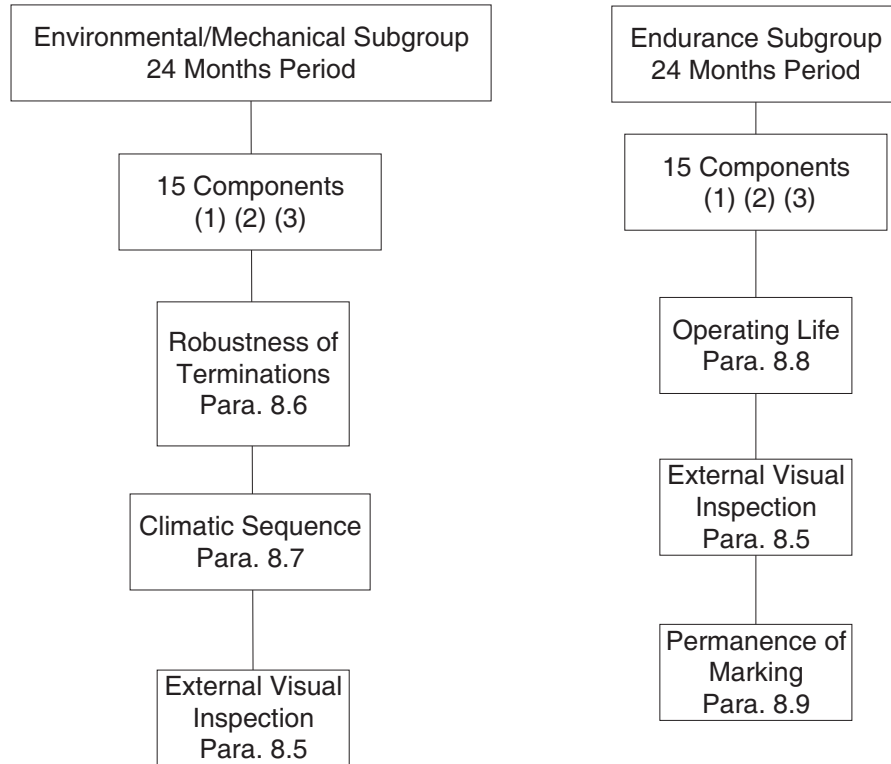
12.3 CHART F3 - SCREENING TESTS

COMPONENTS FROM PRODUCTION CONTROL		
Para. 8.1.3	Room Temperature Electrical Measurements	(1)
Para. 8.2	Rapid Change of Temperature	
Para. 8.3	Overload	(2)
Para. 8.4	Burn-in	(3)
Para. 8.1.2	High and Low Temperatures Electrical Measurements	(2)(3)
Para. 8.1.3	Room Temperature Electrical Measurements	(3)
Para. 6.4	Check for Lot Failure	(4)
Para. 8.5	External Visual Inspection	
TO CHART F4 WHEN APPLICABLE		

NOTES:

1. Performed at the Manufacturer's discretion.
2. Performed on a sample basis.
3. The lot failure criteria of Para. 6.4 apply to this test.
4. Check for Lot Failure shall take into account all electrical parameter failures that may occur during Screening Tests in accordance with Paras. 8.4, 8.1.2 and 8.1.3 subsequent to Overload.

12.4 CHART F4 - QUALIFICATION AND PERIODIC TESTS



NOTES:

1. For distribution within the subgroups, see Para. 7.1.2 for qualification and qualification maintenance and Para. 7.4 for Lot Validation Testing.
2. No failures are permitted.
3. All heaters shall be serialised prior to testing.