



Pages 1 to 16

**CONTACTS, ELECTRICAL, TRIAX, CRIMP  
FOR 3401/056 CONNECTORS**

**ESCC Detail Specification No. 3401/066**

**ISSUE 2  
May 2004**



Document Custodian: European Space Agency - see <https://escies.org>



### **LEGAL DISCLAIMER AND COPYRIGHT**

European Space Agency, Copyright © 2004. All rights reserved.

The European Space Agency disclaims any liability or responsibility, to any person or entity, with respect to any loss or damage caused, or alleged to be caused, directly or indirectly by the use and application of this ESCC publication.

This publication, without the prior permission of the European Space Agency and provided that it is not used for a commercial purpose, may be:

- copied in whole in any medium without alteration or modification.
- copied in part, in any medium, provided that the ESCC document identification, comprising the ESCC symbol, document number and document issue, is removed.



ESCC Detail Specification  
No. 3401/066

PAGE 2

ISSUE 2

**DOCUMENTATION CHANGE NOTICE**

(Refer to <https://escies.org> for ESCC DCR content)

DCR No.	CHANGE DESCRIPTION
109	Specification upissued to incorporate editorial and technical changes per DCR.

	<p style="text-align: center;">ESCC Detail Specification No. 3401/066</p>		<p>PAGE 3 ISSUE 2</p>
---	---	--	---------------------------

**TABLE OF CONTENTS**

		<u>Page</u>
<b>1.</b>	<b><u>GENERAL</u></b>	<b>5</b>
1.1	Scope	5
1.2	Component Type Variants	5
1.3	Maximum Ratings	5
1.4	Parameter Derating Information	5
1.5	Physical Dimensions	5
1.6	Functional Diagram	5
<b>2.</b>	<b><u>APPLICABLE DOCUMENTS</u></b>	<b>5</b>
<b>3.</b>	<b><u>TERMS, DEFINITIONS, ABBREVIATIONS, SYMBOLS AND UNITS</u></b>	<b>5</b>
<b>4.</b>	<b><u>REQUIREMENTS</u></b>	<b>9</b>
4.1	General	9
4.2	Deviations from Generic Specification	9
4.2.1	Deviations from Special In-Process Controls	9
4.2.2	Deviations from Final Production Tests	9
4.2.3	Deviations from Burn-in and Electrical Measurements	9
4.2.4	Deviations from Qualification Tests	9
4.2.5	Deviations from Lot Acceptance Tests	9
4.3	Mechanical Requirements	9
4.3.1	Dimension Check	9
4.3.2	Weight	9
4.3.3	Contact Capability	10
4.3.4	Contact Retention	10
4.3.5	Mating and Unmating Forces	10
4.3.6	Insert Retention	10
4.3.7	Jackscrew Retention	10
4.3.8	Contact Insertion and Withdrawal Forces	10
4.3.9	Engagement and Separation Forces	10
4.3.10	Oversize Pin Exclusion	11
4.3.11	Probe Damage Test	11
4.3.12	Solderability	11
4.3.13	Joint Strength	11
4.4	Materials and Finishes	11
4.4.1	Insert	12
4.4.2	Inner, Intermediate and Outer Contacts	12
4.5	Marking	12
4.5.1	General	12
4.5.2	The ESCC Component Number	12
4.5.3	Traceability Information	12
4.6	Electrical Measurements	12
4.6.1	Electrical Measurements at Room Temperature	12
4.6.2	Electrical Measurements at High and Low Temperatures	12
4.6.3	Circuits for Electrical Measurements	12
4.7	Screening Tests	12
4.8	Environmental and Endurance Tests	14
4.8.1	Measurements and Inspections on Completion of Environmental Tests	14
4.8.2	Measurements and Inspections at Intermediate Points during Endurance Tests	14
4.8.3	Measurements and Inspections on Completion of Endurance Tests	14
4.8.4	Conditions for Operating Life Tests	14
4.8.5	Electrical Circuit for Operating Life Tests	14
4.8.6	Conditions for High Temperature Storage Test	14

<b><u>TABLES</u></b>	<u>Page</u>
1(a) Type Variants	6
1(b) Maximum Ratings	6
2 Electrical Measurements at Room Temperature	13
3 to 5 Not applicable	N/A
6 Measurements and Inspections on Completion of Environmental and Endurance Testing	15

<b><u>FIGURES</u></b>	
1 Parameter Derating Information	7
2 Physical Dimensions	8
3 Functional Diagram	N/A
4 Test Circuit for Contact Resistance Measurements	13

**APPENDICES (Applicable to specific Manufacturers only)**

None.



## 1. GENERAL

### 1.1 SCOPE

This specification details the ratings, physical and electrical characteristics, test and inspection data for Contacts, Electrical, Triax, Crimp, for 3401/056 Connectors. The crimps on inner, intermediate and outer contacts shall be made at equidistant points around the circumference of the contacts.

These contacts shall be procured and packed separately from the connectors.

This specification shall be read in conjunction with:

- ESCC Generic Specification No. 3401, Connectors, Electrical, Non-Filtered, Circular and Rectangular.
- ESCC Detail Specification No. 3401/056, Connectors, Electrical, Circular, Triple-Start Self-Locking Coupling, Scoop-Proof, Removable Crimp Contacts, based on MIL-C-38999 Series III.

the requirements of which are supplemented herein.

### 1.2 COMPONENT TYPE VARIANTS

Variants of the basic type of contacts specified herein, which are also covered by this specification, are scheduled in Table 1(a).

### 1.3 MAXIMUM RATINGS

The maximum ratings, which shall not be exceeded at any time during use or storage, applicable to the contacts specified herein, are scheduled in Table 1(b).

### 1.4 PARAMETER DERATING INFORMATION

The applicable derating information for the contacts specified herein is shown in Figure 1.

### 1.5 PHYSICAL DIMENSIONS

The physical dimensions of the contacts specified herein are shown in Figure 2.

### 1.6 FUNCTIONAL DIAGRAM

Not applicable.

## 2. APPLICABLE DOCUMENTS

The following documents form part of this specification and shall be read in conjunction with it:-

- (a) ESCC Generic Specification No. 3401, Connectors, Electrical, Non-Filtered, Circular and Rectangular.
- (b) ESCC Detail Specification No. 3401/056, Connectors, Electrical, Circular, Triple-Start Self-Locking Coupling, Scoop-Proof, Removable Crimp Contacts, based on MIL-C-38999 Series III.
- (c) MIL-C-17/176, Cables, Radio Frequency, Flexible, Twin.
- (d) SSQ21655, Cable, Electric, MIL-STD-1553 Data Bus, Space Quality, General Specification for.

## 3. TERMS, DEFINITIONS, ABBREVIATIONS, SYMBOLS AND UNITS

For the purpose of this specification, the terms, definitions, abbreviations, symbols and units specified in ESCC Basic Specification No. 21300 shall apply.



**TABLE 1(a) - TYPE VARIANTS**

VARIANTS	TYPE	MAX. WEIGHT (g)	ACCEPTED CABLES
01	Male	4.6	M17-176-00002
02	Female	7.2	SSQ-21655 (NDBC-TFE-2452SJ-75-1 P512296-C)

**NOTES**

1. Contacts fitted in 09-01 arrangement shall be used only with backshells ESCC No. 3401/062, Variants 65 to 67.
2. Contacts fitted in other triax arrangements shall be used only with backshells ESCC No. 3401/062, Variants 41 to 45.

**TABLE 1(b) - MAXIMUM RATINGS**

No.	CHARACTERISTICS	SYMBOL	MAXIMUM RATINGS	UNIT	REMARKS
1	Working Voltage Sea Level	$U_R$	500	V	
2	Rated Current	$I_{cr}$	1.0	A	
3	Frequency Range	$f$	0 to 20	MHz	Note 1
4	Operating Temperature Range	$T_{op}$	- 65 to +200	°C	
5	Storage Temperature Range	$T_{stg}$	- 65 to +200	°C	

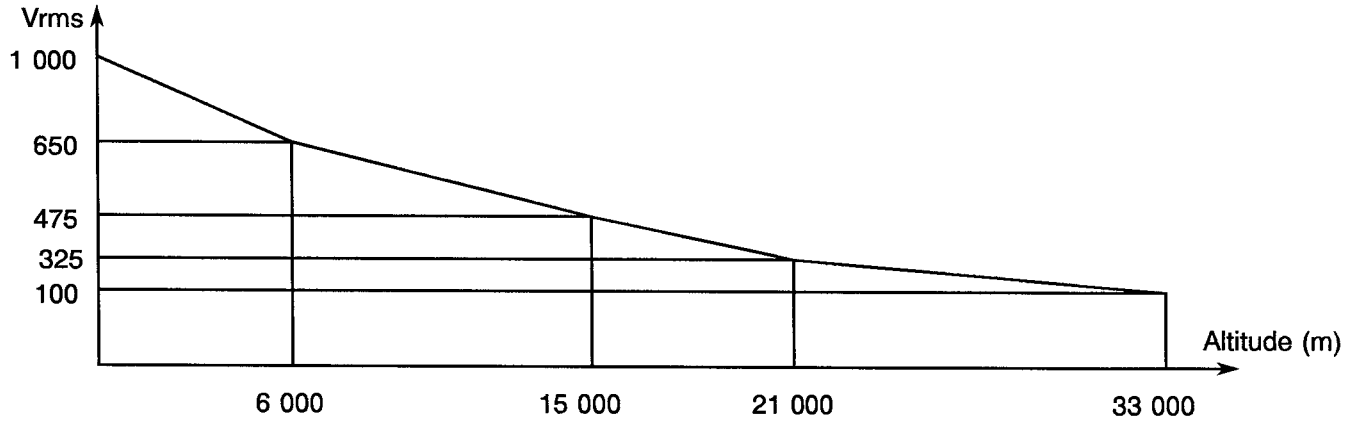
**NOTES**

1. Compatible with 1553 Bus Line.

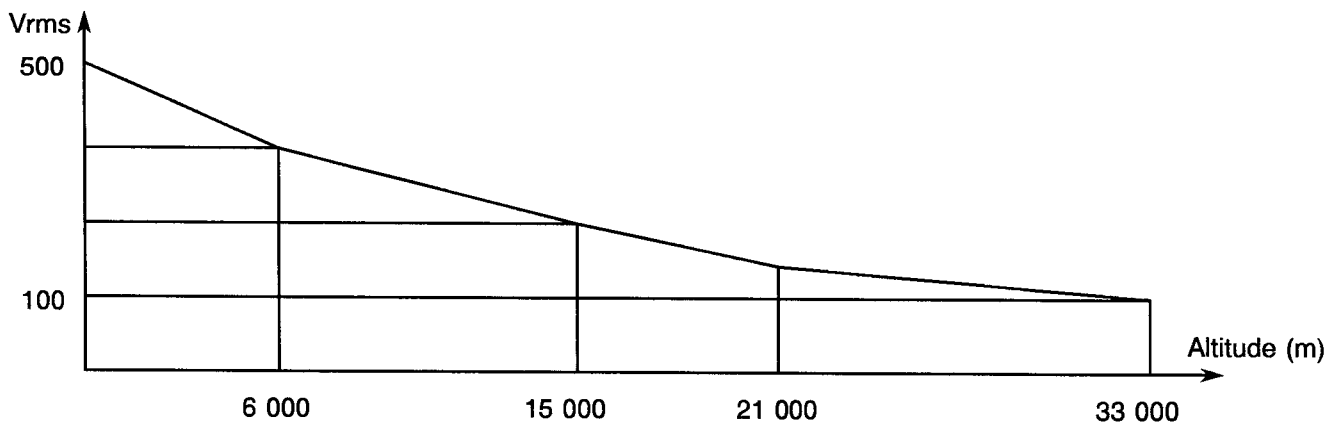
**FIGURE 1 - PARAMETER DERATING INFORMATION**

**VOLTAGE PROOF VERSUS ALTITUDE**

(Inner/Intermediate)



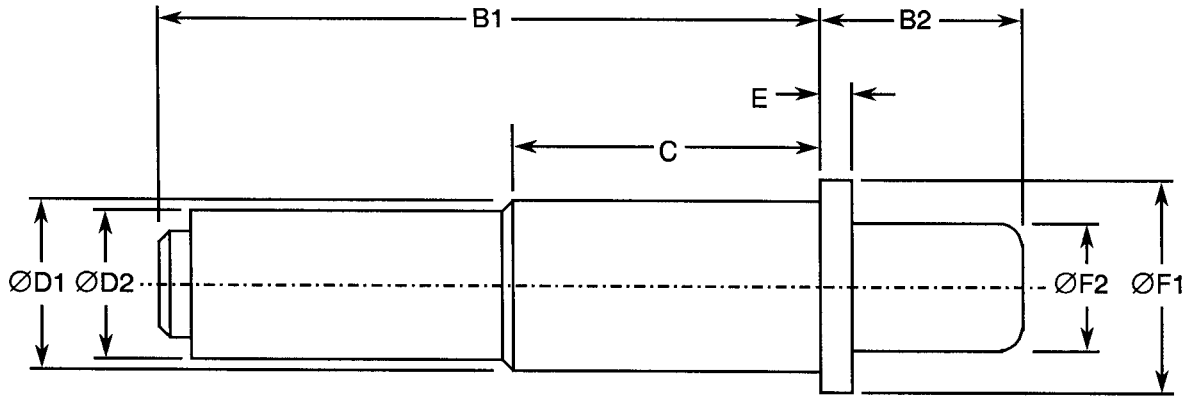
(Intermediate/Outer)





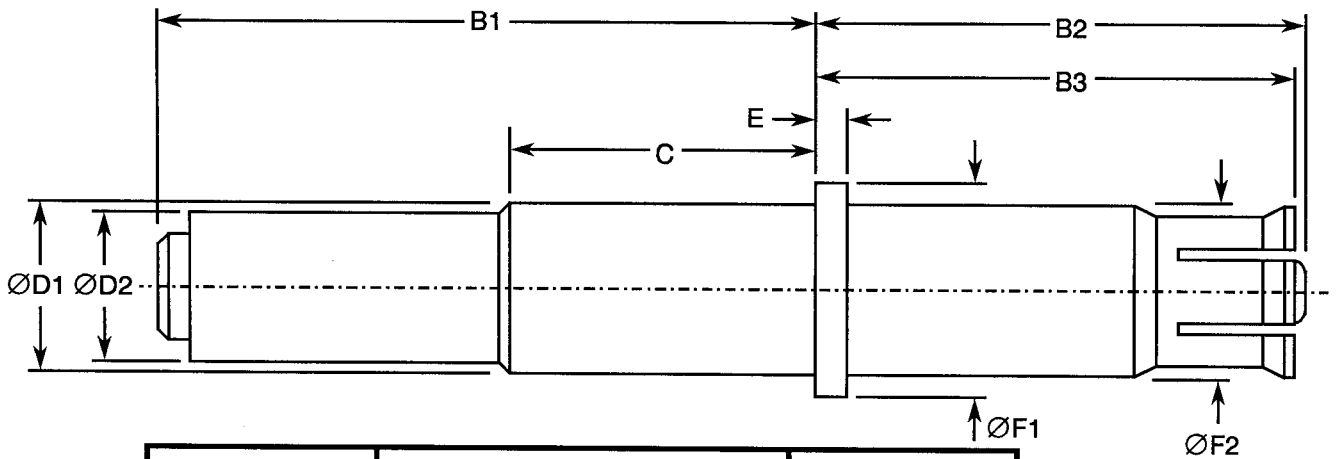
**FIGURE 2 - PHYSICAL DIMENSIONS**

VARIANT 01, MALE CONTACT




SYMBOL	MILLIMETRES		REMARKS
	MIN.	MAX.	
B1	21.34	22.86	
B2	7.49	7.74	
C	10.00	11.00	
ØD1	6.93	7.01	
ØD2	-	6.53	After crimping
E	0.74	0.84	
ØF1	7.95	8.03	
ØF2	5.515	5.565	

VARIANT 02, FEMALE CONTACT



SYMBOL	MILLIMETRES		REMARKS
	MIN.	MAX.	
B1	21.34	22.86	
B2	15.80	16.43	
B3	15.88	16.03	
C	10.00	11.00	
ØD1	6.93	7.01	
ØD2	-	6.53	After crimping
E	0.74	0.84	
ØF1	7.95	8.03	
ØF2	7.22	7.32	

	<p style="text-align: center;">ESCC Detail Specification No. 3401/066</p>		<p>PAGE 9 ISSUE 1</p>
---	---	--	---------------------------

#### 4. REQUIREMENTS

##### 4.1 GENERAL

The complete requirements for procurement of the contacts specified herein shall be as stated in this specification and ESCC Generic Specification No. 3401. Deviations from the Generic Specification, applicable to this specification only, are listed in Para. 4.2.

Deviations from the applicable Generic Specification and this Detail Specification, formally agreed with specific Manufacturers on the basis that the alternative requirements are equivalent to the ESCC requirements and do not affect the components' reliability, are listed in the appendices attached to this specification.

##### 4.2 DEVIATIONS FROM GENERIC SPECIFICATION

###### 4.2.1 Deviations from Special In-process Controls

None.

###### 4.2.2 Deviations from Final Production Tests

None.

###### 4.2.3 Deviations from Burn-in and Electrical Measurements (Chart III)

Not applicable.

###### 4.2.4 Deviations from Qualification Tests (Chart IV)

- (a) Para. 9.15, Joint Strength: Shall be performed as specified in Para. 4.3.13 of this specification.
- (b) Para. 9.26, Overload Test: Not applicable.
- (c) Para. 9.29, Oversize Pin Exclusion: Not applicable.
- (d) Para. 9.30, Probe Damage: Not applicable.
- (e) Para. 9.31, Solderability: Not applicable.

###### 4.2.5 Deviations from Lot Acceptance Tests (Chart V)

- (a) Para. 9.15, Joint Strength: Shall be performed as specified in Para. 4.3.13 of this specification.
- (b) Para. 9.29, Oversize Pin Exclusion: Not applicable.
- (c) Para. 9.30, Probe Damage: Not applicable.

##### 4.3 MECHANICAL REQUIREMENTS

###### 4.3.1 Dimension Check

The dimensions of the contacts specified herein shall be verified in accordance with the requirements set out in Para. 9.6 of ESCC Generic Specification No. 3401 and shall conform to those shown in Figure 2 of this specification.

###### 4.3.2 Weight

The maximum weight of the contacts specified herein shall be as given in Table 1(a).

4.3.3 Contact Capability

For the purpose of this test, the pick-up and drop weights shall be as follows.

4.3.3.1 Inner Contact

	PICK-UP WEIGHT	DROP WEIGHT	UNITS
WEIGHT	11	180	g
PIN DIAMETER	0.594 to 0.596	0.619 to 0.622	mm
INSERTION DEPTH	3.0	3.0	mm

4.3.3.2 Intermediate Contact

	PICK-UP WEIGHT	DROP WEIGHT	UNITS
WEIGHT	11	350	g
PIN DIAMETER	2.844 to 2.847	2.887 to 2.895	mm
INSERTION DEPTH	3.0	3.0	mm

4.3.3.3 Outer Contact

	PICK-UP WEIGHT	DROP WEIGHT	UNITS
WEIGHT	56	450	g
PIN DIAMETER	5.511 to 5.514	5.559 to 5.562	mm
INSERTION DEPTH	4.0	4.0	mm

4.3.4 Contact Retention (In Insert)

The contact retention within the insert shall be 111N. There shall be no displacement of the contact in excess of 0.3mm.

4.3.5 Mating and Unmating Forces

As specified in ESCC Detail Specification No. 3401/056.

4.3.6 Insert Retention (In Shell)

As specified in ESCC Detail Specification No. 3401/056.

4.3.7 Jackscrew Retention

Not applicable.

4.3.8 Contact Insertion and Withdrawal Forces

Insertion and withdrawal forces of the contacts shall be as specified in ESCC Detail Specification No. 3401/058 for size 8 contacts.

Not applicable to arrangement 09-01.

4.3.9 Engagement and Separation Forces

4.3.9.1 Inner Contact

The contact engagement and separation forces shall be as follows.

TEST PIN DIAMETER (mm)	ENGAGEMENT MAXIMUM (g)	SEPARATION MINIMUM (g)
0.594 to 0.596	-	11
0.619 to 0.622	396	-

**4.3.9.2 Intermediate Contact**

The contact engagement and separation forces shall be as follows.

TEST PIN DIAMETER (mm)	ENGAGEMENT MAXIMUM (g)	SEPARATION MINIMUM (g)
2.844 to 2.847	-	11
2.887 to 2.895	623	-

**4.3.9.3 Outer Contact**

The contact engagement and separation forces shall be as follows.

TEST PIN DIAMETER (mm)	ENGAGEMENT MAXIMUM (g)	SEPARATION MINIMUM (g)
5.511 to 5.514	-	56
5.559 to 5.562	1 700	-

**4.3.10 Oversize Pin Exclusion**

Not applicable.

**4.3.11 Probe Damage Test**

Not applicable.

**4.3.12 Solderability**

Not applicable.

**4.3.13 Joint Strength**

- (a) The contact shall be assembled to its test cable as specified in Table 1(a) with a thermoshrink sleeve between cable and back shell.
- (b) Testing shall be performed in accordance with ESCC Generic Specification No. 3401, Para. 9.15.5 with electrical continuity of the 3 contacts being maintained during testing.
- (c) On completion of the testing, Contact Resistance at Low Level shall be measured and shall not exceed the values specified in Table 6 of this specification.

**4.4 MATERIALS AND FINISHES**

The materials and finishes shall be as specified herein. Where a definite material is not specified, a material which will enable the contacts specified herein to meet the performance requirements of this specification shall be used. Acceptance or approval of any constituent material does not guarantee acceptance of the finished product.

#### 4.4.1 Insert

Teflon.

#### 4.4.2 Inner, Intermediate and Outer Contacts

The contacts shall be made of copper base alloy selected from raw materials with a minimum of impurities. The contacts shall be plated as follows:

- 2.0 $\mu$ m  $\pm$  20% nickel underplate.
- 1.27 $\mu$ m minimum gold plate over 3.0 $\mu$ m minimum of copper.

#### 4.5 MARKING

##### 4.5.1 General

The marking of all components delivered to this specification shall be in accordance with with the requirements of ESCC Basic Specification No. 21700 and the following paragraphs. These components being too small to accommodate the marking, the marking requirements, in full, shall accompany each lot of components in its primary package.

Such marking shall comprise:-

- (a) The ESCC Component Number.
- (b) Traceability Information.
- (c) Quantity of Components.

##### 4.5.2 The ESCC Component Number

The ESCC Component Number shall be constituted and marked as follows:

Detail Specification Number \_\_\_\_\_ 340106601B  
Type Variant (see Table 1(a)) \_\_\_\_\_  
Testing Level \_\_\_\_\_

##### 4.5.3 Traceability Information

Traceability information shall be marked in accordance with the requirements of ESCC Basic Specification No. 21700.

#### 4.6 ELECTRICAL MEASUREMENTS

##### 4.6.1 Electrical Measurements at Room Temperature

The parameters to be measured in respect of electrical characteristics are listed in Table 2. Unless otherwise specified, the measurements shall be performed at  $T_{amb} = +22 \pm 3$  °C.

Contact resistance shall be measured on the engaged outer, intermediate and inner conductor contacts.

##### 4.6.2 Electrical Measurements at High and Low Temperatures (Table 3)

Not applicable.

##### 4.6.3 Circuits for Electrical Measurements

A circuit for measuring Contact Resistance is shown in Figure 4 of this specification.

#### 4.7 SCREENING TESTS (TABLES 4 AND 5)

Not applicable.

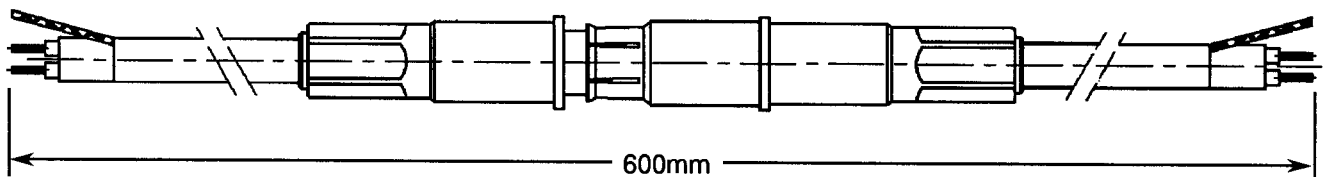
**TABLE 2 - ELECTRICAL MEASUREMENTS AT ROOM TEMPERATURE**

No.	CHARACTERISTICS	SYMBOL	ESCC 3401 TEST METHOD	TEST CONDITIONS	LIMITS		UNIT
					MIN.	MAX.	
1	Insulation Resistance (Inner, Intermediate and Outer Contacts)	R <sub>i</sub>	Para. 9.1.1.1	Para. 9.1.1.1	5 000	-	MΩ
2	Voltage Proof Leakage Current 1 (Inner to Intermediate Contact)	I <sub>L1</sub>	Para. 9.1.1.2	Para. 9.1.1.2 VP = 1 000Vrms	-	2.0	mA
3	Voltage Proof Leakage Current 2 (Intermediate to Outer Contact)	I <sub>L2</sub>	Para. 9.1.1.2	Para. 9.1.1.2 VP = 500Vrms	-	2.0	mA
4	Contact Resistance (Low Level Current) (Inner and Intermediate Contacts) (Outer Contact)	R <sub>cl</sub>	Para. 9.1.1.3	Para. 9.1.1.3 and Figure 4 100mA	-	8.5 2.0	mΩ
5	Contact Resistance (Rated Current)	R <sub>cr</sub>	Para. 9.1.1.3	Para. 9.1.1.3 and Figure 4 1.0A	-	8.5	mΩ

**TABLES 3, 4 AND 5**

Not applicable.

**FIGURE 4 - TEST CIRCUIT FOR CONTACT RESISTANCE MEASUREMENTS**



- Contact Resistance shall be measured at the distance specified above and shall be calculated as the difference between this value and the pre-measured value of the cable used, i.e:

$$R_c = R_t - R_w.$$

Where:

R<sub>c</sub> = Contact resistance.

R<sub>t</sub> = Total measured resistance.

R<sub>w</sub> = Total wire resistance.

- The current shall be applied for an average of 5 seconds in both directions and the resulting values shall be averaged to obtain the measured value.

- 4.8 ENVIRONMENTAL AND ENDURANCE TESTS (CHARTS IV AND V OF ESCC GENERIC SPECIFICATION No. 3401)
- 4.8.1 Measurements and Inspections on Completion of Environmental Tests  
The parameters to be measured and inspections to be performed on completion of environmental testing are scheduled in Table 6. Unless otherwise specified, the measurements shall be performed at  $T_{amb} = +22 \pm 3$  °C.
- 4.8.2 Measurements and Inspections at Intermediate Points during Endurance Tests  
Not applicable.
- 4.8.3 Measurements and Inspections on Completion of Endurance Tests  
The parameters to be measured and inspections to be performed on completion of endurance tests shall be those specified in Table 6. Unless otherwise specified, the measurements shall be performed at  $T_{amb} = +22 \pm 3$  °C.
- 4.8.4 Conditions for Operating Life Tests  
Not applicable.
- 4.8.5 Electrical Circuit for Operating Life Tests (Figure 5)  
Not applicable.
- 4.8.6 Conditions for High Temperature Storage Test (Part of Endurance Testing)  
Not applicable.



**TABLE 6 - MEASUREMENTS AND INSPECTIONS ON COMPLETION OF ENVIRONMENTAL AND ENDURANCE TESTING**

NO.	ESCC GENERIC NO. 3401		MEASUREMENTS AND INSPECTIONS		SYMBOL	LIMITS		UNIT
	ENVIRONMENTAL AND ENDURANCE TESTS (1)	TEST METHOD AND CONDITIONS	IDENTIFICATION	CONDITIONS		MIN	MAX	
01	Seal Test	Para. 9.9	Not applicable					
02	Wiring	Para. 9.10 and Table 1(a) of this spec.	Visual Examination Low Level Contact Resistance	Table 2 Item 4	Rcl	Table 2 Item 4		
03	Vibration	Para. 9.11	ESCC 3401/056					
04	Shock or Bump	Para. 9.12	ESCC 3401/056					
05	Climatic Sequence	Para. 9.13	ESCC 3401/056					
06	Plating Thickness	Para. 9.14	Thickness	-	-	Para. 4.4.2 of this spec		
07	Joint Strength	Para. 9.15 and Paras. 4.2.4 and 4.2.5 of this spec.	Para. 4.3.13 of this spec. <b>Final Measurements</b> Low Level Contact Resistance	Force = 50N (Min.) Table 2 Item 4	Rcl	Continuity Table 2 Item 4		
08	Rapid Change of Temperature	Para. 9.16	ESCC 3401/001					
09	Contact Retention (In Insert)	Para. 9.17 & Para. 4.3.4 of this spec	Contact Displacement		-	ESCC 3401 Para. 9.17		
10	Endurance	Para. 9.18	<b>Initial Measurements</b> Low Level Contact Resistance <b>Final Measurements</b> Insulation Resistance Voltage Proof Leak Current Voltage Proof Leak Current Low Level Contact Resistance Drift	Table 2 Item 4 Table 2 Item 1 Table 2 Item 2 Table 2 Item 3 Table 2 Item 4	Rcl Ri I <sub>L1</sub> I <sub>L2</sub> ΔRcl	Record Values Table 2 Item 1 - 2.0 - 2.0 -20 +20	mA mA %	
11	Permanence of Marking	Para. 9.19	Not applicable					
12	Mating/Unmating Forces	Para. 9.20	ESCC 3401/056					

**NOTES**

1. The tests in this table refer to either Chart IV or V and shall be used as applicable.





**TABLE 6 - MEASUREMENTS AND INSPECTIONS ON COMPLETION OF ENVIRONMENTAL AND ENDURANCE TESTING (CONT'D)**

NO.	ESCC GENERIC NO. 3401		MEASUREMENTS AND INSPECTIONS		SYMBOL	LIMITS		UNIT
	ENVIRONMENTAL AND ENDURANCE TESTS (1)	TEST METHOD AND CONDITIONS	IDENTIFICATION	CONDITIONS		MIN	MAX	
13	High Temperature Storage	Para. 9.21	<b>Initial Measurements</b> Low Level Contact Resist <b>Final Measurements</b> Insulation Resistance Voltage Proof Leak Current Voltage Proof Leak Current Low Level Contact Resistance Drift Rated Current Contact Resistance Contact Retention (In Insert)	Table 2 Item 4  Table 2 Item 1 Table 2 Item 2 Table 2 Item 3 Table 2 Item 4  Table 2 Item 5  Para. 4.3.4 of this spec.	Rcl  Ri $I_{L1}$ $I_{L2}$ $\Delta Rcl$  Rcr  -	Record Values  Table 2 Item 1 -      2.0 -      2.0 -20    +20  -      11  ESCC 3401 Para. 9.17	mA mA %  mΩ	
14	Corrosion	Para. 9.22	Visual Examination	-	-	-	-	
15	Insert Retention (In Shell)	Para. 9.23 & Para. 4.3.6 of this spec.	ESCC 3401/056					
16	Jackscrew Retention	Para. 9.24 & Para. 4.3.7 of this spec.	Not applicable					
17	High Temperature Measurements	Para. 9.25	ESCC 3401/056					
18	Overload Test	Para. 9.26 and Para. 4.2.4 of this spec.	Not applicable					
19	Maintenance Aging	Para. 9.27	Visual Examination Contact Retention (In Insert)  Contact Insertion & Withdrawal Forces	-  Para. 4.3.4 of this spec. Para. 4.3.8 of this spec.	-  - -	-      -  ESCC 3401 Para. 9.17 Para. 4.3.8		
20	Engage/Separation Forces	Para. 9.28 & Para. 4.3.9 of this spec.	Force		F	Para. 4.3.9		
21	Oversize Pin Exclusion	Para. 9.29 and Paras. 4.2.4 and 4.2.5 of this spec.	Not applicable					
22	Probe Damage	Para. 9.30 and Paras. 4.2.4 and 4.2.5 of this spec.	Not applicable					
23	Solderability	Para. 9.31 and Para. 4.2.4 of this spec.	Not applicable					

**NOTES:** See Page 15.