



Pages 1 to 23

**LIGHTWEIGHT ACCESSORIES
FOR RECTANGULAR CONNECTORS
3401/001 AND 3401/002
ESCC Detail Specification No. 3401/072**

**ISSUE 2
December 2006**



Document Custodian: European Space Agency - see <https://escies.org>

	ESCC Detail Specification No. 3401/072		PAGE i ISSUE 2
---	---	--	-------------------

LEGAL DISCLAIMER AND COPYRIGHT

European Space Agency, Copyright © 2006. All rights reserved.

The European Space Agency disclaims any liability or responsibility, to any person or entity, with respect to any loss or damage caused, or alleged to be caused, directly or indirectly by the use and application of this ESCC publication.

This publication, without the prior permission of the European Space Agency and provided that it is not used for a commercial purpose, may be:

- copied in whole in any medium without alteration or modification.
- copied in part, in any medium, provided that the ESCC document identification, comprising the ESCC symbol, document number and document issue, is removed.

	<p>ESCC Detail Specification No. 3401/072</p>	<p>PAGE 2 ISSUE 2</p>
---	---	---------------------------

DOCUMENTATION CHANGE NOTICE

(Refer to <https://escies.org> for ESCC DCR content)

DCR No.	CHANGE DESCRIPTION
234	Specification upissued to incorporate technical and editorial changes per DCR.


	<p style="text-align: center;">ESCC Detail Specification No. 3401/072</p>		<p>PAGE 3 ISSUE 2</p>
---	---	--	---------------------------

TABLE OF CONTENTS


		<u>Page</u>
1.	<u>GENERAL</u>	5
1.1	Scope	5
1.2	Component Type Variants	5
1.3	Maximum Ratings	5
1.4	Parameter Derating Information	5
1.5	Physical Dimensions	5
2.	<u>APPLICABLE DOCUMENTS</u>	5
3.	<u>TERMS, DEFINITIONS, ABBREVIATIONS, SYMBOLS AND UNITS</u>	5
4.	<u>REQUIREMENTS</u>	21
4.1	General	21
4.2	Deviations from Generic Specification	21
4.2.1	Deviations from Special In-process Controls	21
4.2.2	Deviations from Final Production Tests	21
4.2.3	Deviations from Burn-in and Electrical Measurements	21
4.2.4	Deviations from Qualification Tests	21
4.2.5	Deviations from Lot Acceptance Tests	21
4.3	Mechanical Requirements	21
4.3.1	Dimension Check	21
4.3.2	Weight	21
4.3.3	Torque Value	21
4.4	Materials and Finishes	22
4.4.1	Screw Lock Assemblies	22
4.4.2	Lightweight Backshell	22
4.4.3	Castellated Backshell	22
4.4.4	EMI Gasket	22
4.4.5	Magnetism Level	22
4.5	Marking	22
4.5.1	General	22
4.5.2	The ESCC Component Number	23
4.5.3	Characteristics	23
4.5.4	Traceability Information	23
4.6	Electrical Measurements	23
4.7	Burn-in and Electrical Measurements	23
4.8	Environmental and Endurance Tests	23

TABLES

1(a)	Type Variants	6
1(b)	Maximum Ratings	8

FIGURES

1	Parameter Derating Information	N/A
2(a)	Male Screw Lock Assemblies	9
2(b)	Lightweight Backshell With Saddle Clamps For Strain Relief	10
2(c)	Lightweight D-Sub Shorting Can	11
2(d)	EMI Shielded Backshell Straight Cable Outlet	12
2(e)	Lightweight Shielded Backshell -90° Longitudinal Cable Outlet	13

	<p style="text-align: center;">ESCC Detail Specification No. 3401/072</p>		<p>PAGE 4 ISSUE 2</p>
---	---	--	---------------------------

	<u>Page</u>
2(f) Lightweight Shielded Backshell Straight Cable Outlet	14
2(g) Lightweight Backshell Dual Entry Band Termination, 15 Pin	15
2(h) Castellated Backshell	16
2(i) Straight Lightweight Backshell Ultra Elliptical Band Termination	17
2(j) 45° Lightweight Backshell Ultra Elliptical Band Termination	18
2(k) Lightweight D-Sub Extra-Shorting Can	19
2(l) Male Screw Lock Assembly	20

APPENDICES (Applicable to specific Manufacturers only)

None.

	<p style="text-align: center;">ESCC Detail Specification No. 3401/072</p>		<p>PAGE 5 ISSUE 2</p>
---	---	--	---------------------------

1. GENERAL

1.1 SCOPE

This specification details the ratings, physical and electrical characteristics, test and inspection data for Lightweight Accessories for Rectangular Connectors (D*M and D*MA). It shall be read in conjunction with ESCC Generic Specification No. 3401, the requirements of which are supplemented herein and ESCC Detail Specifications Nos. 3401/001 and 3401/002.

1.2 COMPONENT TYPE VARIANTS

The type variants of accessories covered by this specification are given in Table 1(a).

1.3 MAXIMUM RATINGS

The maximum ratings, which shall not be exceeded at any time during use or storage, applicable to the accessories specified herein, are given in Table 1(b).

1.4 PARAMETER DERATING INFORMATION

Not applicable.

1.5 PHYSICAL DIMENSIONS

The physical dimensions of the accessories specified herein are shown in Figure 2.

2. APPLICABLE DOCUMENTS

The following documents form part of this specification and shall be read in conjunction with it:-

- (a) ESCC Generic Specification No. 3401 for Connectors, Electrical, Circular and Rectangular.
- (b) ESCC Detail Specification No. 3401/001, Connectors, Electrical, Rectangular, Miniature, Non-removable Solder and Wire-Wrap-Type Contacts and, Removable Coaxial and Power, Crimp-Type and Solder-Type Contacts, based on Type D*M.
- (c) ESCC Detail Specification No. 3401/002, Connectors, Electrical, Rectangular, Miniature, Removable Crimp Type Contacts and, Removable Coaxial and Power Crimp-Type and Solder-Type Contacts, based on type D*MA.

3. TERMS, DEFINITIONS, ABBREVIATIONS, SYMBOLS AND UNITS

For the purpose of this specification, the terms, definitions, abbreviations, symbols and units specified in ESCC Basic Specification No. 21300 shall apply.

TABLE 1(a) - TYPE VARIANTS

VARIANT	DESCRIPTION	WEIGHT (g)
01	Screw lock assembly brass (Male/hex. hole 2.38 head screw) With backshell	1.5
02	Screw lock assembly brass (Male/hex. hole 2.38 head screw) With backshell	1.5
03	Screw lock assembly stainless steel (Male/hex. hole 2.38 head screw) With backshell	1.5
04	Screw lock assembly stainless steel (Male/hex. hole 2.38 head screw) With backshell	1.5
05	Backshell: Lightweight design with saddle clamps for strain relief Size E	15.5
06	Backshell: Lightweight design with saddle clamps for strain relief Size A	19
07	Backshell: Lightweight design with saddle clamps for strain relief Size B	23
08	Backshell: Lightweight design with saddle clamps for strain relief Size C	29
09	Backshell: Lightweight design with saddle clamps for strain relief Size D	33
10	Backshell: Lightweight D-SUB shorting can Size E	8.0
11	Backshell: Lightweight D-SUB shorting can Size A	10
12	Backshell: Lightweight D-SUB shorting can Size B	14
13	Backshell: Lightweight D-SUB shorting can Size C	20
14	Backshell: Lightweight D-SUB shorting can Size D	26
15	Backshell: EMI shielded straight cable outlet - front mount Size E	21
16	Backshell: EMI shielded straight cable outlet - front mount Size A	26
17	Backshell: EMI shielded straight cable outlet - front mount Size B	30
18	Backshell: EMI shielded straight cable outlet - front mount Size C	35
19	Backshell: EMI shielded straight cable outlet - front mount Size D	40
20	Backshell: EMI shielded straight cable outlet - rear mount Size E	21
21	Backshell: EMI shielded straight cable outlet - rear mount Size A	26
22	Backshell: EMI shielded straight cable outlet - rear mount Size B	30
23	Backshell: EMI shielded straight cable outlet - rear mount Size C	35
24	Backshell: EMI shielded straight cable outlet - rear mount Size D	40
25	Backshell: Lightweight shielded backshell -90° longitudinal right cable outlet Size E	7.0
26	Backshell: Lightweight shielded backshell -90° longitudinal right cable outlet Size A	10
27	Backshell: Lightweight shielded backshell -90° longitudinal right cable outlet Size B	13.5
28	Backshell: Lightweight shielded backshell -90° longitudinal right cable outlet Size C	18
29	Backshell: Lightweight shielded backshell -90° longitudinal right cable outlet Size D	23
30	Backshell: Lightweight shielded backshell -90° longitudinal left cable outlet Size E	7.0
31	Backshell: Lightweight shielded backshell -90° longitudinal left cable outlet Size A	10
32	Backshell: Lightweight shielded backshell -90° longitudinal left cable outlet Size B	13.5
33	Backshell: Lightweight shielded backshell -90° longitudinal left cable outlet Size C	18
34	Backshell: Lightweight shielded backshell -90° longitudinal left cable outlet Size D	23

TABLE 1(a) - TYPE VARIANTS (CONTINUED)

VARIANT	DESCRIPTION	WEIGHT (g)
35	Backshell: Lightweight shielded backshell straight cable outlet	Size E 6.5
36	Backshell: Lightweight shielded backshell straight cable outlet	Size A 8.5
37	Backshell: Lightweight shielded backshell straight cable outlet	Size B 11.5
38	Backshell: Lightweight shielded backshell straight cable outlet	Size C 13.5
39	Backshell: Lightweight shielded backshell straight cable outlet	Size D 14.5
40	Backshell: Lightweight dual entry bend termination, 15 pin	Size A 23
41	Castellated Backshell	Size E 2.0
42	Castellated Backshell	Size A 2.5
43	Castellated Backshell	Size B 3.0
44	Castellated Backshell	Size C 3.9
45	Castellated Backshell	Size D 4.0
46	Backshell: Straight Lightweight Backshell Ultra Elliptical Band Termination	Size E 8.0
47	Backshell: Straight Lightweight Backshell Ultra Elliptical Band Termination	Size A 13
48	Backshell: Straight Lightweight Backshell Ultra Elliptical Band Termination	Size B 18
49	Backshell: Straight Lightweight Backshell Ultra Elliptical Band Termination	Size C 23
50	Backshell: Straight Lightweight Backshell Ultra Elliptical Band Termination	Size D 28
51	Backshell: 45° Lightweight Backshell Ultra Elliptical Band Termination, Right	Size E 10
52	Backshell: 45° Lightweight Backshell Ultra Elliptical Band Termination, Right	Size A 14
53	Backshell: 45° Lightweight Backshell Ultra Elliptical Band Termination, Right	Size B 20
54	Backshell: 45° Lightweight Backshell Ultra Elliptical Band Termination, Right	Size C 26
55	Backshell: 45° Lightweight Backshell Ultra Elliptical Band Termination, Right	Size D 33
56	Backshell: 45° Lightweight Backshell Ultra Elliptical Band Termination, Left	Size E 10
57	Backshell: 45° Lightweight Backshell Ultra Elliptical Band Termination, Left	Size A 14
58	Backshell: 45° Lightweight Backshell Ultra Elliptical Band Termination, Left	Size B 20
59	Backshell: 45° Lightweight Backshell Ultra Elliptical Band Termination, Left	Size C 26
60	Backshell: 45° Lightweight Backshell Ultra Elliptical Band Termination, Left	Size D 33
61	Backshell: Lightweight D-SUB Extra-Shorting Can,	Size E 8.0
62	Backshell: Lightweight D-SUB Extra-Shorting Can,	Size A 10
63	Backshell: Lightweight D-SUB Extra-Shorting Can,	Size B 14
64	Backshell: Lightweight D-SUB Extra-Shorting Can,	Size C 20
65	Backshell: Lightweight D-SUB Extra-Shorting Can,	Size D 26
66	Screw lock assembly brass (Male/hex. hole 2.0 head screw)	With backshell 1.5
67	Screw lock assembly brass (Male/hex. hole 2.0 head screw)	With backshell 1.5
68	Screw lock assembly stainless steel (Male/hex. hole 2.0 head screw)	With backshell 1.5
69	Screw lock assembly stainless steel (Male/hex. hole 2.0 head screw)	With backshell 1.5
70	Screw lock assembly stainless steel (Male/slotted head screw)	1.0
71	Screw lock assembly stainless steel (Male/hex. hole 2.38 head screw)	1.0

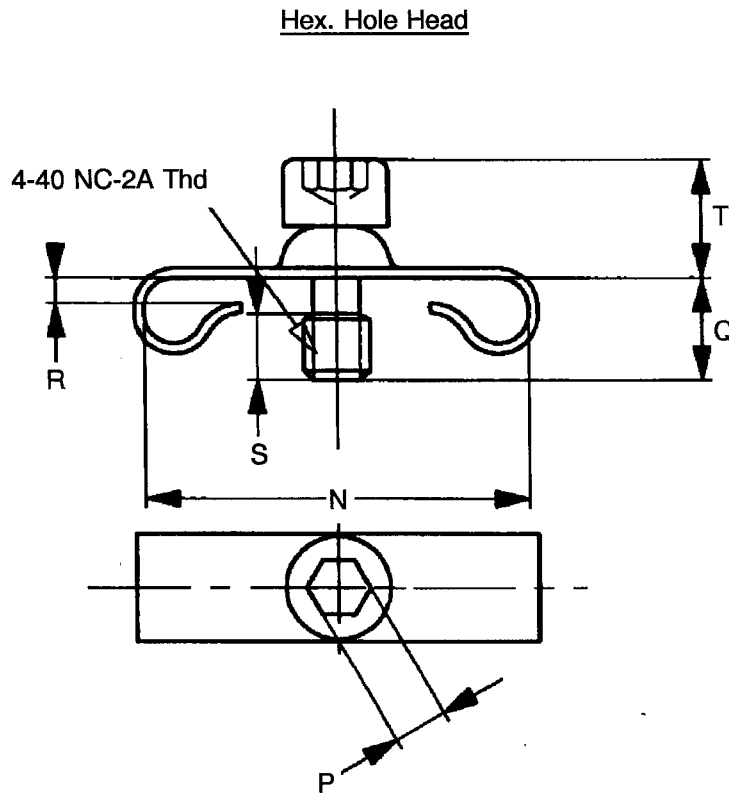
TABLE 1(b) - MAXIMUM RATINGS

No.	CHARACTERISTIC	SYMBOL	MAXIMUM RATING		UNIT	REMARKS
1	Operating Temperature Range	T_{op}	-55 to +125 (1)		°C	T_{amb}
2	Storage Temperature Range	T_{stg}	-55 to +125 (1)		°C	
3	Torque Value for Screws	T_{qe}	BRASS	S.S.	cm.daN	For Male
			3.3	4.4		

FIGURE 1 - PARAMETER DERATING INFORMATION

Not applicable.

FIGURE 2 - PHYSICAL DIMENSIONS
FIGURE 2(a) - MALE SCREW LOCK ASSEMBLIES



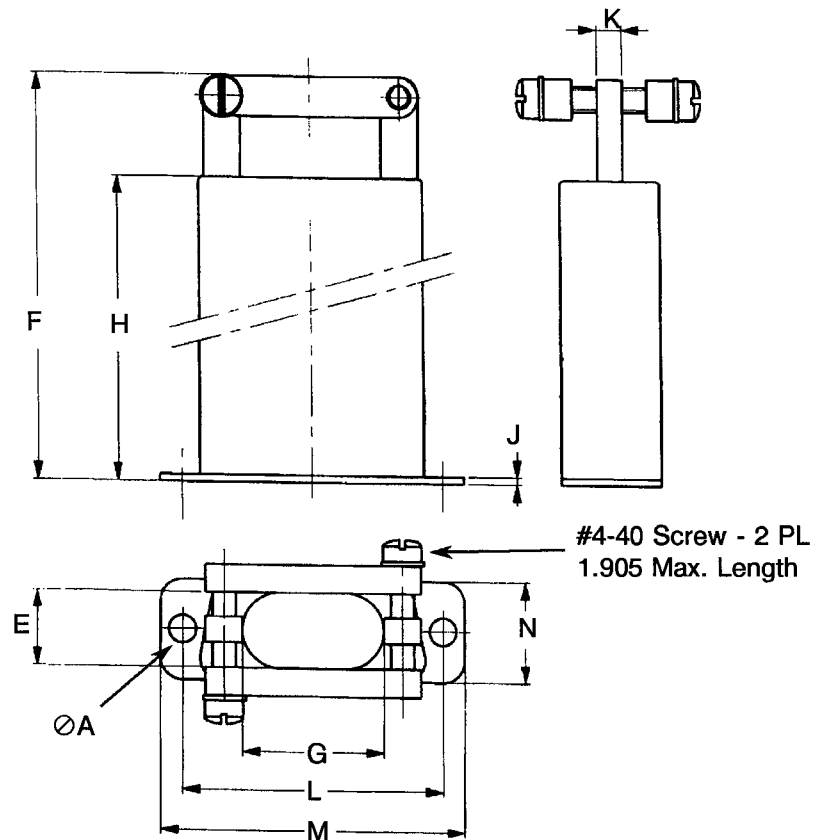
VARIANT		USE WITH SHELL SIZE	N		P (2) TYP.	Q		R		S MIN.	T MAX.
BRASS	S.S.		MIN.	MAX.		MIN.	MAX.	MIN.	MAX.		
		<u>With Lightweight Backshell</u>									
01	03	DA to DC: (P or S)	12.96	13.72	2.38	4.4	5.16	2.25	2.45	2.8	5.53
02	04	DD : (P or S)	15.75	16.26	2.38	4.4	5.16	2.25	2.45	2.8	5.53

NOTES

1. All dimensions are in millimetres.
2. 2.00 for Variants 66 to 69.

FIGURE 2 - PHYSICAL DIMENSIONS (CONTINUED)

FIGURE 2(b) - LIGHTWEIGHT BACKSHELL WITH SADDLE CLAMPS FOR STRAIN RELIEF



SHELL SIZE	VARIANT	ØA		E		F		G		H	
		MIN.	MAX.	MIN.	MAX.	MIN.	MAX.	MIN.	MAX.	MIN.	MAX.
E	05	3.32	3.58	9.14	9.9	65.95	67.56	8.51	9.27	54.48	55.24
A	06	3.32	3.58	9.14	9.9	65.95	67.56	11.68	12.44	54.48	55.24
B	07	3.32	3.58	9.14	9.9	67.55	69.16	12.32	13.08	54.48	55.24
C	08	3.32	3.58	9.14	9.9	67.55	69.16	12.32	13.08	54.48	55.24
D	09	3.32	3.58	11.5	12.26	67.55	69.16	15.08	15.84	54.48	55.24

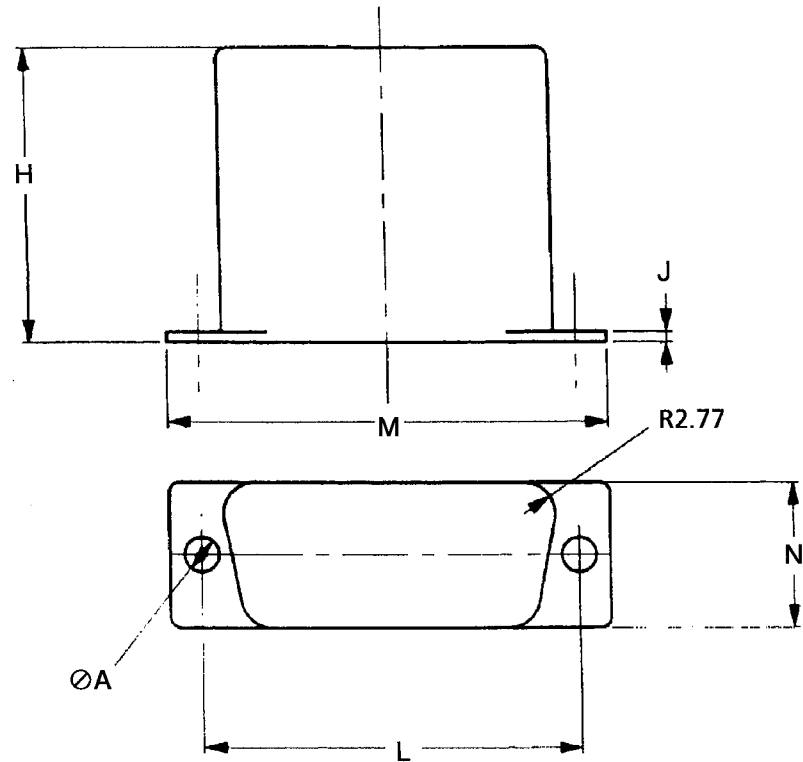
SHELL SIZE	VARIANT	J		K	L		M		N	
		MIN.	MAX.		MIN.	MAX.	MIN.	MAX.	MIN.	MAX.
E	05	0.68	0.94	3.17	24.86	25.12	30.18	30.94	12.32	13.08
A	06	0.68	0.94	3.17	33.19	33.45	38.51	39.27	12.32	13.08
B	07	0.68	0.94	3.17	46.91	47.17	52.4	53.16	12.32	13.08
C	08	0.68	0.94	3.17	63.37	63.63	68.66	69.42	12.32	13.08
D	09	0.68	0.94	3.17	60.98	61.24	66.29	67.05	15.09	15.85

NOTES

1. All dimensions are in millimetres.

FIGURE 2 - PHYSICAL DIMENSIONS (CONTINUED)

FIGURE 2(c) - LIGHTWEIGHT D-SUB SHORTING CAN



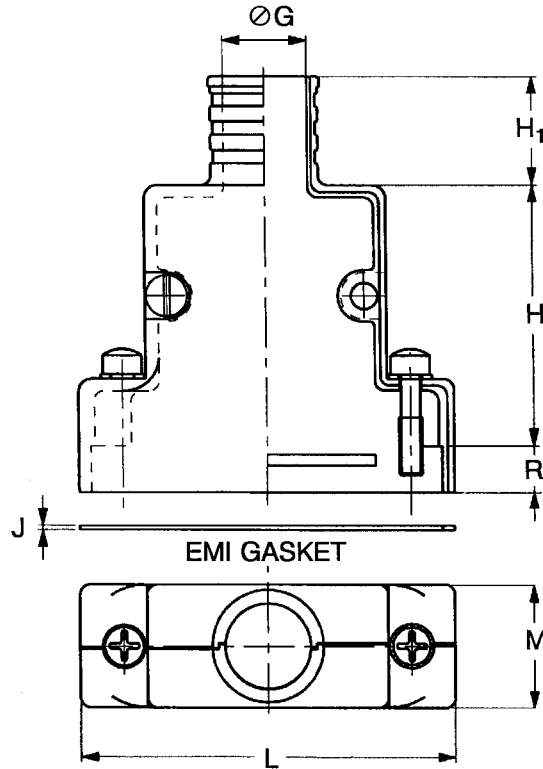
SHELL SIZE	VARIANT	ØA		H	J	L		M		N	
		MIN.	MAX.			MIN.	MAX.	MIN.	MAX.	MIN.	MAX.
E	10	3.92	4.04	25.4	0.9	24.86	25.12	30.18	30.94	12.32	13.08
A	11	3.92	4.04	25.4	0.9	33.19	33.45	38.51	39.27	12.32	13.08
B	12	3.92	4.04	25.4	0.9	46.91	47.17	52.4	53.16	12.32	13.08
C	13	3.92	4.04	25.4	0.9	63.37	63.63	68.66	69.42	12.32	13.08
D	14	3.92	4.04	25.4	0.9	60.98	61.24	66.29	67.05	15.09	15.85

NOTES

1. All dimensions are in millimetres.

FIGURE 2 - PHYSICAL DIMENSIONS (CONTINUED)

FIGURE 2(d) - EMI SHIELDED BACKSHELL - STRAIGHT CABLE OUTLET



SHELL SIZE	VARIANT		ØG		H MAX.	H ₁	J	M	
	FRONT MOUNT	REAR MOUNT	MIN.	MAX.				MIN.	MAX.
E	15	20	6.48	6.98	33.02	12.7	0.51	15.73	16.23
A	16	21	9.65	10.15	33.02	12.7	0.51	15.73	16.23
B	17	22	10.29	10.79	38.61	12.7	0.51	15.73	16.23
C	18	23	10.29	10.79	38.61	12.7	0.51	15.73	16.23
D	19	24	13.08	13.58	38.61	12.7	0.51	18.45	19.04

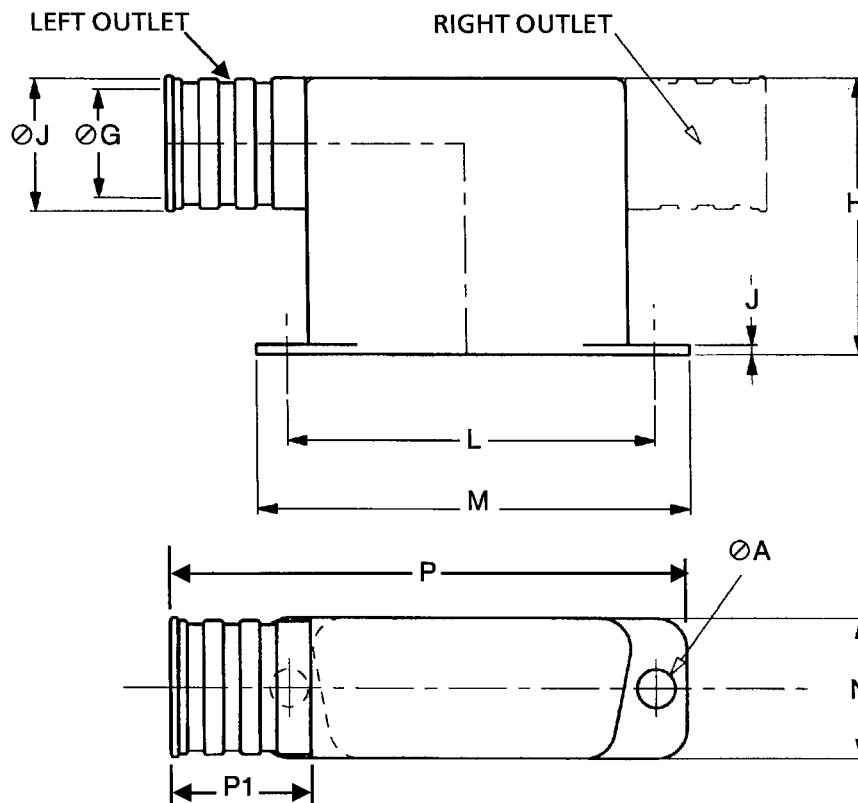
SHELL SIZE	VARIANT		L		R			
	FRONT MOUNT	REAR MOUNT	MIN.	MAX.	FRONT MOUNT		REAR MOUNT	
					MIN.	MAX.	MIN.	MAX.
E	15	20	34.78	35.28	7.61	7.87	6.19	6.45
A	16	21	43.11	43.61	7.61	7.87	6.19	6.45
B	17	22	57	57.5	7.61	7.87	6.19	6.45
C	18	23	73.28	73.78	7.61	7.87	6.19	6.45
D	19	24	70.89	71.39	7.61	7.87	6.19	6.45

NOTES

1. All dimensions are in millimetres.

FIGURE 2 - PHYSICAL DIMENSIONS (CONTINUED)

FIGURE 2(e) - LIGHTWEIGHT SHIELDED BACKSHELL - 90° LONGITUDINAL CABLE OUTLET



SHELL SIZE	VARIANT		ØA		ØG		ØJ		H	
	RIGHT OUTLET	LEFT OUTLET	MIN.	MAX.	MIN.	MAX.	MIN.	MAX.	MIN.	MAX.
E	25	30	3.91	4.03	6.47	7.23	8.51	9.26	24.64	26.16
A	26	31	3.91	4.03	9.65	10.41	11.68	12.44	24.64	26.16
B	27	32	3.91	4.03	10.28	11.04	12.32	13.08	24.64	26.16
C	28	33	3.91	4.03	10.28	11.04	12.32	13.08	24.64	26.16
D	29	34	3.91	4.03	13.05	13.81	15.08	15.84	24.64	26.16

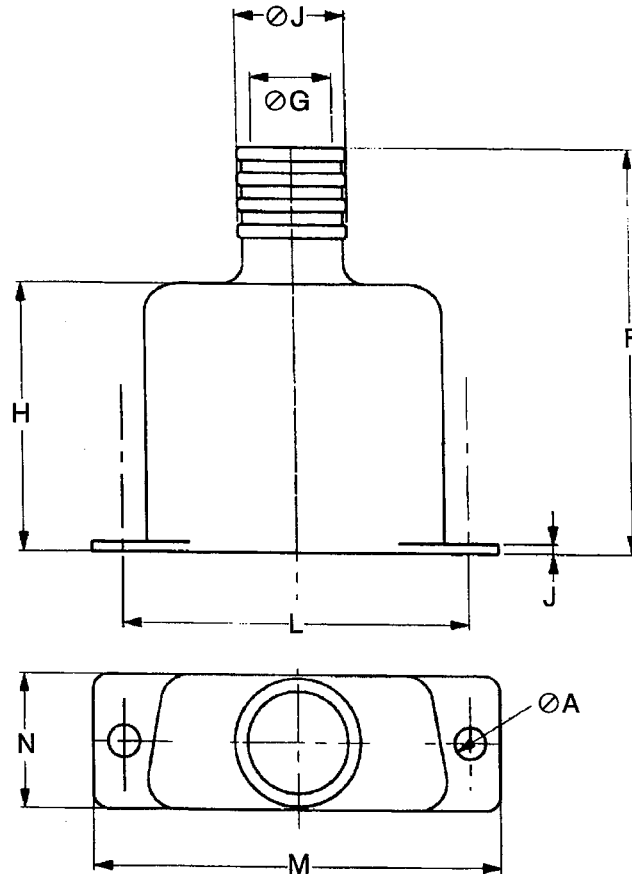
SHELL SIZE	VARIANT		J	L		M		N		P	P1
	RIGHT OUTLET	LEFT OUTLET		MIN.	MAX.	MIN.	MAX.	MIN.	MAX.		
E	25	30	0.89	24.86	25.12	30.18	30.94	12.32	13.08	41.1	15
A	26	31	0.89	33.19	33.45	38.51	39.27	12.32	13.08	49.5	15
B	27	32	0.89	46.91	47.17	52.40	53.16	12.32	13.08	63.2	15
C	28	33	0.89	63.37	63.63	68.66	69.42	12.32	13.08	81	15
D	29	34	0.89	60.98	61.25	66.29	67.16	15.09	15.85	77.2	15

NOTES

1. All dimensions are in millimetres.

FIGURE 2 - PHYSICAL DIMENSIONS (CONTINUED)

FIGURE 2(f) - LIGHTWEIGHT SHIELDED BACKSHELL - STRAIGHT CABLE OUTLET



SHELL SIZE	VARIANT	ØA		ØG		ØJ		F	H	J
		MIN.	MAX.	MIN.	MAX.	MIN.	MAX.			
E	35	3.91	4.03	6.47	7.23	8.51	9.27	38.10	25.4	0.89
A	36	3.91	4.03	9.65	10.41	11.68	12.44	38.10	25.4	0.89
B	37	3.91	4.03	10.28	11.04	12.32	13.08	38.10	25.4	0.89
C	38	3.91	4.03	10.28	11.04	12.32	13.08	38.10	25.4	0.89
D	39	3.91	4.03	13.05	13.81	15.08	15.84	38.10	25.4	0.89

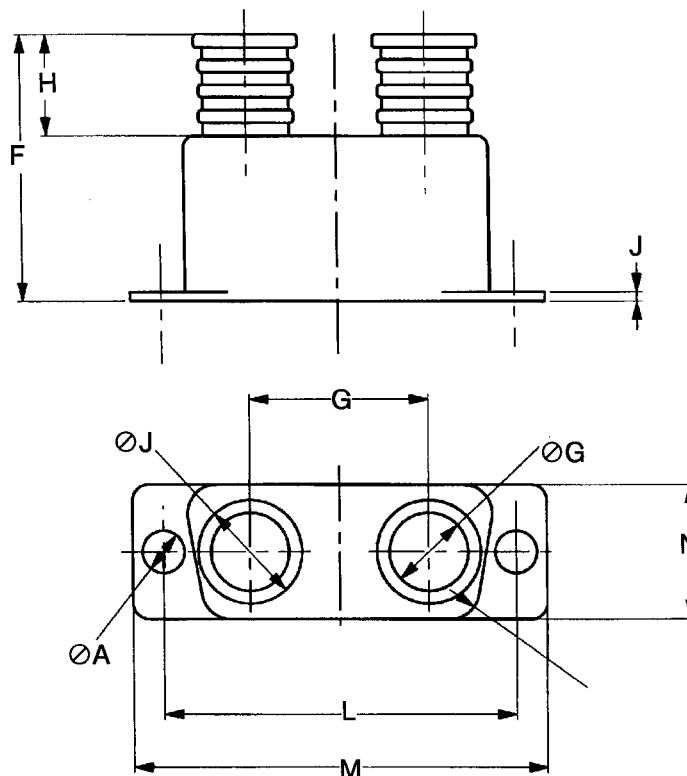
SHELL SIZE	VARIANT	L		M		N	
		MIN.	MAX.	MIN.	MAX.	MIN.	MAX.
E	35	24.86	25.12	30.18	30.94	12.32	13.08
A	36	33.19	33.45	38.51	39.27	12.32	13.08
B	37	46.91	47.17	52.40	53.16	12.32	13.08
C	38	63.37	63.63	68.66	69.42	12.32	13.08
D	39	60.98	61.25	66.29	67.16	15.09	15.85

NOTES

1. All dimensions are in millimetres.

FIGURE 2 - PHYSICAL DIMENSIONS (CONTINUED)

FIGURE 2(g) - LIGHTWEIGHT BACKSHELL, DUAL ENTRY BAND TERMINATION, 15 PIN



SHELL SIZE	VARIANT	ØA		ØG		ØJ		F	G	H
		MIN.	MAX.	MIN.	MAX.	MIN.	MAX.			
A	40	3.92	4.04	6.99	7.75	9.4	10.16	25.4	16.89	9.65

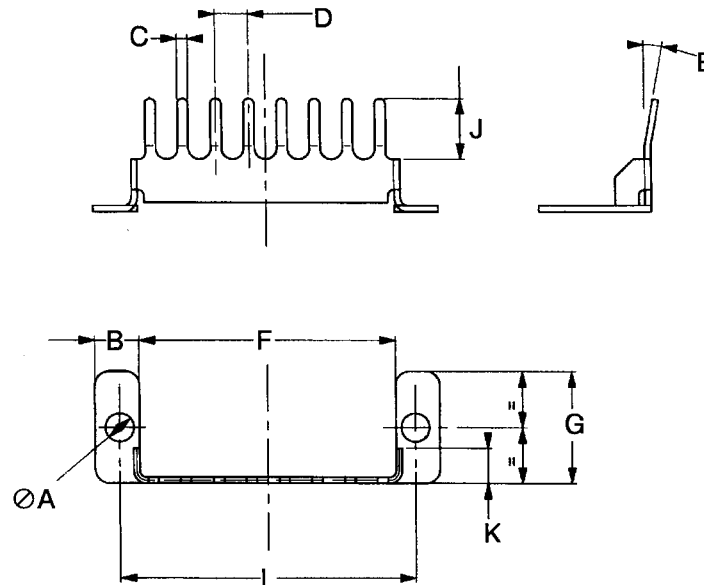
SHELL SIZE	VARIANT	J	L		M		N	
			MIN.	MAX.	MIN.	MAX.	MIN.	MAX.
A	40	0.9	33.07	33.57	38.51	39.27	12.32	13.08

NOTES

1. All dimensions are in millimetres.

FIGURE 2 - PHYSICAL DIMENSIONS (CONTINUED)

FIGURE 2(h) - CASTELLATED BACKSHELL



SHELL SIZE	VARIANT	ØA		B		C		D		NO. OF PLATES	E	
		MIN.	MAX.	MIN.	MAX.	MIN.	MAX.	MIN.	MAX.		MIN.	MAX.
E	41	3.1	3.3	5.34	5.45	1.1	1.3	3.56	3.81	5	10	15
A	42	3.1	3.3	4.89	5.0	1.1	1.3	3.56	3.81	8	10	15
B	43	3.1	3.3	4.89	5.0	1.1	1.3	3.56	3.81	11	10	15
C	44	3.1	3.3	4.89	5.0	1.1	1.3	3.56	3.81	16	10	15
D	45	3.1	3.3	4.89	5.0	1.1	1.3	3.56	3.81	15	10	15

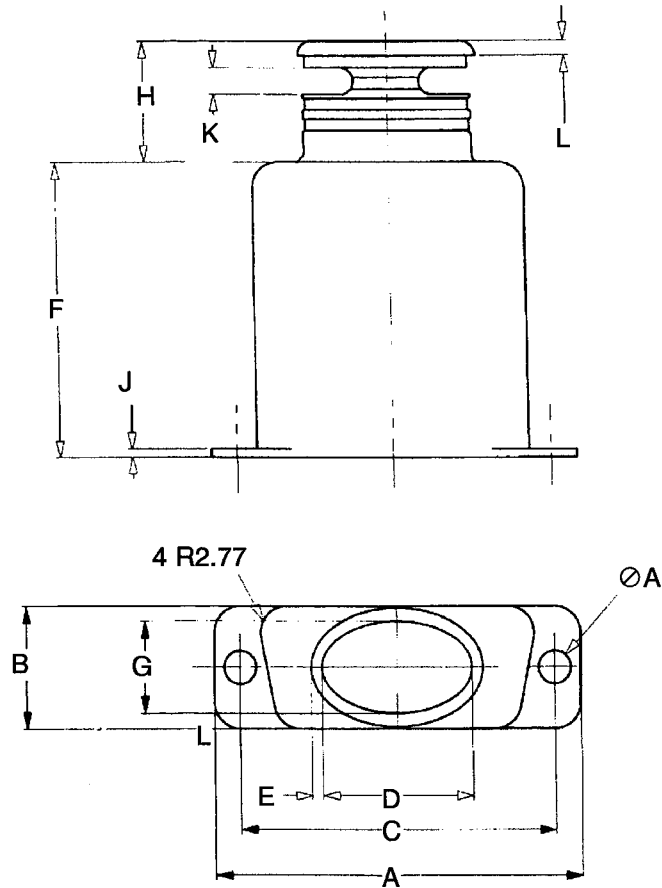
SHELL SIZE	VARIANT	F		G		J		K		L	
		MIN.	MAX.	MIN.	MAX.	MIN.	MAX.	MIN.	MAX.	MIN.	MAX.
E	41	19.5	19.7	12.6	12.8	6.86	7.11	3.84	4.0	24.86	25.12
A	42	28.8	29	12.6	12.8	6.86	7.11	3.84	4.0	33.19	33.45
B	43	42.7	42.9	12.6	12.8	6.86	7.11	3.84	4.0	46.91	47.17
C	44	59	59.2	12.6	12.8	6.86	7.11	3.84	4.0	63.37	63.63
D	45	56.6	56.8	15.3	15.5	6.86	7.11	3.84	4.0	60.98	61.24

NOTES

1. All dimensions are in millimetres.

FIGURE 2 - PHYSICAL DIMENSIONS (CONTINUED)

FIGURE 2(i) - STRAIGHT LIGHTWEIGHT BACKSHELL ULTRA ELLIPTICAL BAND TERMINATION



SHELL SIZE	VARIANT	ØA		A		B		C		D	
		MIN.	MAX.	MIN.	MAX.	MIN.	MAX.	MIN.	MAX.	MIN.	MAX.
E	46	3.91	4.03	30.16	30.94	12.32	13.08	24.86	25.12	12.32	13.08
A	47	3.91	4.03	38.51	39.27	12.32	13.08	33.19	33.45	15.49	16.25
B	48	3.91	4.03	52.4	53.16	12.32	13.08	46.89	47.17	18.67	19.43
C	49	3.91	4.03	68.66	69.42	12.32	13.08	63.37	63.63	25.02	25.78
D	50	3.91	4.03	66.29	67.05	15.09	15.85	60.98	61.24	21.84	22.6

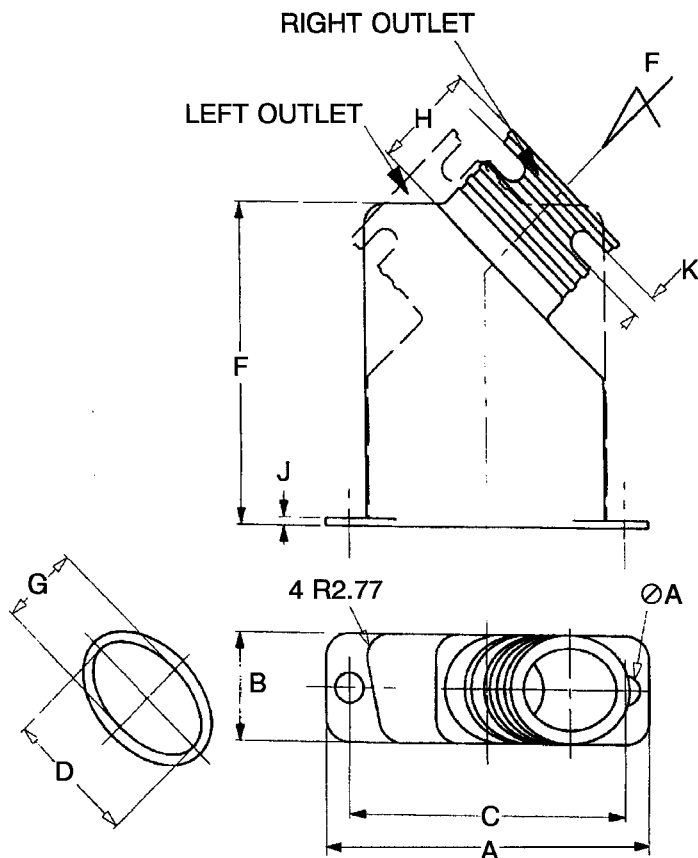
SHELL SIZE	VARIANT	E	F	G	H	J	K	L
E	46	1.52	30.48	9.53	12.67	0.9	2.77	1.52
A	47	1.52	30.48	9.53	12.67	0.9	2.77	1.52
B	48	1.52	30.48	9.53	12.67	0.9	2.77	1.52
C	49	1.52	30.48	9.53	12.67	0.9	2.77	1.52
D	50	1.52	30.48	12.30	12.67	0.9	2.77	1.52

NOTES

1. All dimensions are in millimetres.

FIGURE 2 - PHYSICAL DIMENSIONS (CONTINUED)

FIGURE 2(i) - 45°LIGHTWEIGHT BACKSHELL ULTRA ELLIPTICAL BAND TERMINATION



SHELL SIZE	VARIANT		ØA		A		B		C		D	
	Right Outlet	Left Outlet	MIN.	MAX.	MIN.	MAX.	MIN.	MAX.	MIN.	MAX.	MIN.	MAX.
E	51	56	3.91	4.03	30.18	30.94	12.32	13.08	24.66	25.12	12.32	13.08
A	52	57	3.91	4.03	38.51	39.27	12.32	13.08	33.19	33.45	15.49	16.25
B	53	58	3.91	4.03	52.40	53.16	12.32	13.08	46.81	47.17	18.67	19.43
C	54	59	3.91	4.03	68.56	69.42	12.32	13.08	63.37	63.63	25.02	25.78
D	55	60	3.91	4.03	66.29	67.05	15.09	15.85	60.98	61.24	21.84	22.60

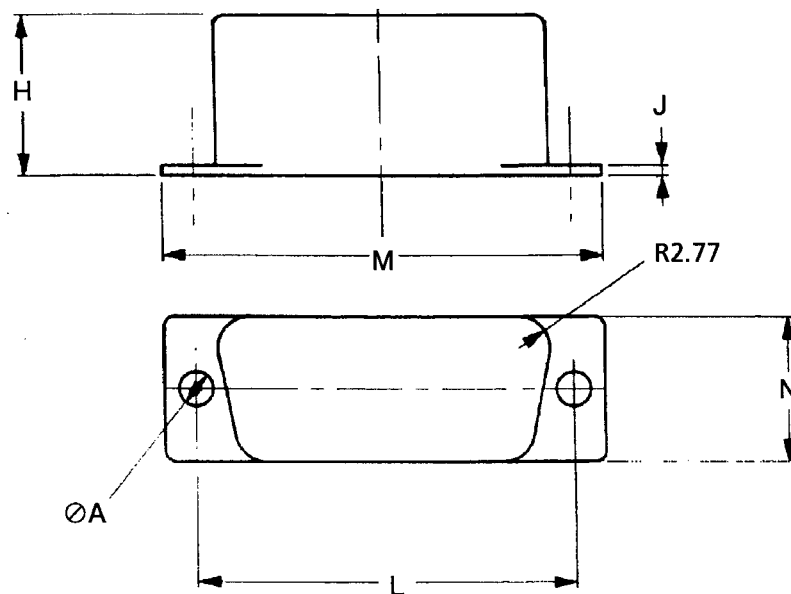
SHELL SIZE	VARIANT		F	G	H	J	K
	Right Outlet	Left Outlet					
E	51	56	38.10	9.53	12.67	0.9	2.77
A	52	57	38.10	9.53	12.67	0.9	2.77
B	53	58	38.10	9.53	12.67	0.9	2.77
C	54	59	38.10	9.53	12.67	0.9	2.77
D	55	60	38.10	12.30	12.67	0.9	2.77

NOTES

1. All dimensions are in millimetres.

FIGURE 2 - PHYSICAL DIMENSIONS (CONTINUED)

FIGURE 2(k) - LIGHTWEIGHT D-SUB EXTRA-SHORTING CAN



SHELL SIZE	VARIANT	ØA		H	J	L		M		N	
		MIN.	MAX.			MIN.	MAX.	MIN.	MAX.	MIN.	MAX.
E	61	3.92	4.04	12.7	0.9	24.86	25.12	30.18	30.94	12.32	13.08
A	62	3.92	4.04	12.7	0.9	33.19	33.45	38.51	39.27	12.32	13.08
B	63	3.92	4.04	12.7	0.9	46.91	47.17	52.4	53.16	12.32	13.08
C	64	3.92	4.04	12.7	0.9	63.37	63.63	68.66	69.42	12.32	13.08
D	65	3.92	4.04	12.7	0.9	60.98	61.24	66.29	67.05	15.09	15.85

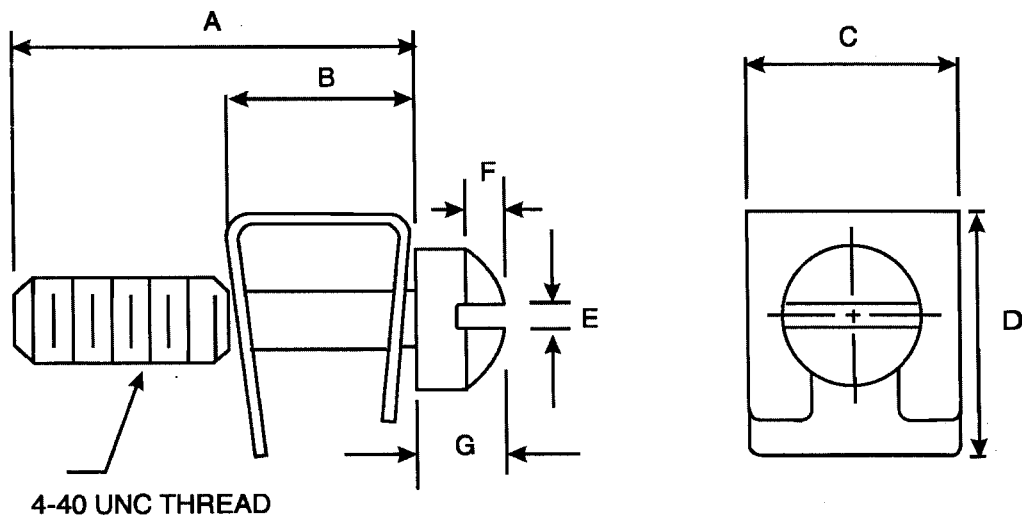
NOTES

1. All dimensions are in millimetres.

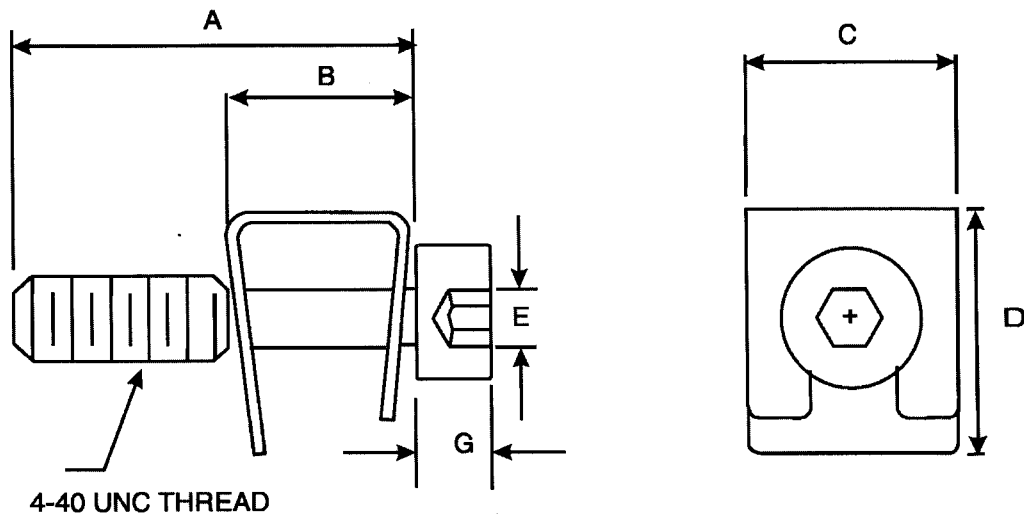
FIGURE 2 - PHYSICAL DIMENSIONS (CONTINUED)

FIGURE 2(l) - MALE SCREW LOCK ASSEMBLY

SLOTTED HEAD



HEX. HEAD



VARIANT	HEAD TYPE	A		B	C		D MAX.	E		F		G
		MIN.	MAX.		MIN.	MAX.		MIN.	MAX.	MIN.	MAX.	
70	Slotted	5.97	6.5	3.35	5.58	7.11	6.8	0.78	0.99	0.89	1.22	2.75
71	HEX	5.97	6.5	3.35	5.58	7.11	6.8	2.38 TYP.		-	-	2.85

NOTES

1. All dimensions are in millimetres.



4. REQUIREMENTS

4.1 GENERAL

The complete requirements for procurement of the accessories specified herein are stated in this specification and ESCC Generic Specification No. 3401 for Connectors, Electrical, Circular and Rectangular. Deviations from the Generic Specification, applicable to this specification only, are listed in Para. 4.2

Deviations from the applicable Generic Specification and this Detail Specification, formally agreed with specific Manufacturers on the basis that the alternative requirements are equivalent to the ESCC requirements and do not affect the components' reliability, are listed in the appendices attached to this specification.

4.2 DEVIATIONS FROM GENERIC SPECIFICATION

4.2.1 Deviations from Special In-process Controls

- (a) Para. 5.2.2, Gold Plating Porosity: Not applicable.
- (b) Para. 5.2.3, Plating Thickness: Not applicable.

4.2.2 Deviations from Final Production Tests (Chart II)

Only the following tests shall be performed:-

- (a) Para. 4.4, Marking.
- (b) Para. 9.6, Dimension Check.
- (c) Para. 9.7, External Visual Inspection. The magnification shall be X3.

4.2.3 Deviations from Burn-in and Electrical Measurements (Chart III)

Not applicable.

4.2.4 Deviations from Qualification Tests (Chart IV)

Not applicable.

4.2.5 Deviations from Lot Acceptance Tests (Chart V)

Not applicable.

4.3 MECHANICAL REQUIREMENTS

4.3.1 Dimension Check

The dimensions of the accessories specified herein shall be verified in accordance with the requirements set out in Para. 9.6 of ESCC Generic Specification No. 3401 and shall conform to those shown in Figure 2 of this specification.

4.3.2 Weight

The maximum weight of the accessories specified herein shall be as shown in Table 1(a) of this specification.

4.3.3 Torque Value

The torque value to be used for tightening of the screws of the accessories specified herein shall be as stated in Table 1(b) of this specification.



4.4 MATERIALS AND FINISHES

The materials and finishes shall be as specified herein. Where a definite material is not specified, a material which will enable the accessories specified herein to meet the performance requirements of this specification shall be used. Acceptance or approval of any constituent material does not guarantee acceptance of the finished product.

4.4.1 Screw-Lock Assemblies (Male and Female)

Potting shells and back-shells:-

Material shall be brass plated with gold (0.7µm minimum) over copper (1µm minimum) or passivated stainless steel.

4.4.2 Lightweight Backshell

Material shall be aluminium alloy plated with gold (0.7µm minimum) over copper (1µm minimum).

4.4.3 Castellated Backshell

Material shall be copper alloy plated with gold (0.7µm minimum) over copper (1µm minimum).

4.4.4 EMI Gasket

Material shall be conductive silicone elastomer.

4.4.5 Magnetism Level

The allowable value of magnetism shall not exceed that specified for the relevant level (see Para. 4.5.3.1).

4.5 MARKING

4.5.1 General

The marking of all components delivered to this specification shall be in accordance with the requirements of ESCC Basic Specification No. 21700 and the following paragraphs. When the component is too small to accommodate all of the marking as specified, as much as space permits shall be marked and the marking information, in full, shall accompany the component in its primary package.

The information to be marked and the order of precedence, shall be as follows:-

- (a) The ESCC Component Number.
- (b) Characteristics.
- (c) Traceability Information.

4.5.2 The ESCC Component Number

Each component shall bear the ESCC Component Number which shall be constituted and marked as follows:

340107201B

Detail Specification Number _____

Type Variant (see Table 1(a)) _____

Testing Level _____

4.5.3 Characteristics

The characteristics to be marked in the following order of precedence are:-

(a) Magnetism Level.

4.5.3.1 Magnetism Level (For all Variants, except Variants 3 and 4).

The following code shall be used for magnetism level:-

CODE	DEFINITION
NMB	Magnetism Level: ≤ 200 gamma

4.5.4 Traceability Information

Traceability information shall be marked in accordance with the requirements of ESCC Basic Specification No. 21700.

4.6 ELECTRICAL MEASUREMENTS (TABLES 2 AND 3)

Not applicable.

4.7 BURN-IN AND ELECTRICAL MEASUREMENTS (TABLES 4 AND 5)

Not applicable.

4.8 ENVIRONMENTAL AND ENDURANCE TESTS (TABLE 6)

Not applicable.