



**RF COAXIAL CONNECTORS, TYPE SSMA,
(FEMALE CONTACT)**

ESCC Detail Specification No. 3402/005

| | |
|---------|------------|
| Issue 3 | March 2018 |
|---------|------------|



Document Custodian: European Space Agency – see <https://escies.org>

LEGAL DISCLAIMER AND COPYRIGHT

European Space Agency, Copyright © 2018. All rights reserved.

The European Space Agency disclaims any liability or responsibility, to any person or entity, with respect to any loss or damage caused, or alleged to be caused, directly or indirectly by the use and application of this ESCC publication.

This publication, without the prior permission of the European Space Agency and provided that it is not used for a commercial purpose, may be:

- copied in whole, in any medium, without alteration or modification.
- copied in part, in any medium, provided that the ESCC document identification, comprising the ESCC symbol, document number and document issue, is removed.

DOCUMENTATION CHANGE NOTICE

(Refer to <https://escies.org> for ESCC DCR content)

| DCR No. | CHANGE DESCRIPTION |
|---------|--|
| 1100 | Specification upissued to incorporate changes per DCR. |

TABLE OF CONTENTS

| | | |
|---------|---|----|
| 1 | GENERAL | 6 |
| 1.1 | SCOPE | 6 |
| 1.2 | TYPE VARIANTS | 6 |
| 1.3 | MAXIMUM RATINGS | 6 |
| 1.4 | PARAMETER DERATING INFORMATION (FIGURE 1) | 6 |
| 1.5 | PHYSICAL DIMENSIONS | 6 |
| 1.6 | STANDARD TEST CONNECTOR INTERFACE | 6 |
| 2 | APPLICABLE DOCUMENTS | 12 |
| 3 | TERMS, DEFINITIONS, ABBREVIATIONS, SYMBOLS AND UNITS | 12 |
| 4 | REQUIREMENTS | 12 |
| 4.1 | GENERAL | 12 |
| 4.2 | DEVIATIONS FROM GENERIC SPECIFICATION | 12 |
| 4.2.1 | Deviations from Special In-process Controls | 12 |
| 4.2.2 | Deviations from Final Production Tests (Chart II) | 12 |
| 4.2.3 | Deviations from Burn-in and Electrical Measurements (Chart III) | 12 |
| 4.2.4 | Deviations from Qualification Tests (Chart IV) | 12 |
| 4.2.5 | Deviations from Lot Acceptance Tests (Chart V) | 12 |
| 4.3 | MECHANICAL REQUIREMENTS | 12 |
| 4.3.1 | Dimension Check | 12 |
| 4.3.2 | Weight | 13 |
| 4.3.3 | Coupling Proof Torque | 13 |
| 4.3.4 | Cable Retention Force | 13 |
| 4.3.4.1 | Flexible Cables | 13 |
| 4.3.4.2 | Semi-rigid Cables | 13 |
| 4.3.5 | Mating and Unmating Forces | 13 |
| 4.3.6 | Endurance | 13 |
| 4.3.7 | Residual Magnetism | 13 |
| 4.3.7.1 | Beryllium copper, copper underplate, gold-plated connectors | 13 |
| 4.3.7.2 | Beryllium copper, nickel underplate, gold-plated connectors | 13 |
| 4.3.7.3 | Stainless steel connectors | 13 |
| 4.3.8 | Contact Engagement and Separation Forces | 14 |
| 4.3.9 | Contact Retention | 14 |
| 4.4 | MATERIALS AND FINISHES | 14 |
| 4.4.1 | Gold Plated Versions | 14 |
| 4.4.1.1 | Normal Types | 14 |
| 4.4.1.2 | Hermetic Types | 15 |
| 4.4.2 | Stainless Steel Versions | 15 |



| | | |
|---------|--|----|
| 4.5 | MARKING | 16 |
| 4.5.1 | General | 16 |
| 4.5.2 | The ESCC Component Number | 16 |
| 4.5.3 | Characteristics | 16 |
| 4.5.3.1 | Type of Plating/Material | 16 |
| 4.5.3.2 | Subvariants | 16 |
| 4.5.4 | Traceability Information | 16 |
| 4.6 | ELECTRICAL MEASUREMENTS | 17 |
| 4.6.1 | Electrical Measurements at Room Temperature | 17 |
| 4.6.2 | Electrical Measurements at High and Low Temperatures (Table 3) | 17 |
| 4.6.3 | Circuits for Electrical Measurements | 17 |
| 4.7 | BURN-IN TESTS (TABLES 4 AND 5) | 17 |
| 4.8 | ENVIRONMENTAL AND ENDURANCE TESTS (CHARTS IV AND V OF ESCC GENERIC SPECIFICATION NO. 3402) | 18 |
| 4.8.1 | Measurements and Inspections on Completion of Environmental Tests | 18 |
| 4.8.2 | Measurements and Inspections at Intermediate Points during Endurance Tests | 18 |
| 4.8.3 | Measurements and Inspections on Completion of Endurance Tests | 18 |
| 4.8.4 | Conditions for Operating Life Tests (Part of Endurance Testing) | 18 |
| 4.8.5 | Electrical Circuits for Operating Life Tests | 18 |
| 4.8.6 | Conditions for High Temperature Storage Test (Part of Endurance Testing) | 18 |

1 GENERAL

1.1 SCOPE

This specification details the ratings, physical and electrical characteristics, test and inspection data for RF Coaxial Connectors, Type SSMA (Female Contact). It shall be read in conjunction with ESCC Generic Specification No. [3402](#), the requirements of which are supplemented herein.

1.2 TYPE VARIANTS

A list of the type variants of the connectors specified herein, which are also covered by this specification, is given in Table 1(a).

For each type variant, the full electrical and physical characteristics are given in individual Figures 2(b) at the end of this specification.

1.3 MAXIMUM RATINGS

The maximum ratings, which shall not be exceeded at any time during use or storage, applicable to the connectors specified herein, are as scheduled in Table 1(b).

1.4 PARAMETER DERATING INFORMATION (FIGURE 1)

The derating information applicable to the connectors specified herein is shown in Figure 1

1.5 PHYSICAL DIMENSIONS

The physical dimensions of the connectors specified herein are shown in Figures 2(a) and 2(b).

1.6 STANDARD TEST CONNECTOR INTERFACE

Whenever gauges are required for mating with the connectors under test, their physical dimensions shall be in accordance with those specified in Figure 3.

TABLE 1(a) – TYPE VARIANTS

| Variant | Description |
|---------|--|
| 01 | Straight Jack, Solder Type, for Semi-Rigid Cable Ø 2.2mm (0.085") |
| 06 | Straight Jack, Crimp Type |
| 09 | Straight Jack, Solder Type, Flange-Mounted, for Semi-Rigid Cable Ø2.2mm (0.085") |
| 15 | Square Flange Receptacle, Front Mounting |
| 17 | 2-Hole Flange Receptacle, Front Mounting |
| 27 | Elbow Receptacle, Square Flange |
| 29 | Square Flange Receptacle |
| 30 | 2-Hole Flange Receptacle |
| 31 | Square Flange Receptacle |
| 58 | Bulkhead Receptacle |
| 59 | Bulkhead Receptacle for Semi-Rigid Cable Ø2.2mm (0.085") |
| 60 | Hermetic Receptacle, Solder Type |

NOTES

1. The Variants are described in Figure 2(b).
2. For finishes, see Para. 4.4.

TABLE 1(b) - MAXIMUM RATINGS

| No. | Characteristics | Symbol | Maximum Ratings | Unit | Remarks |
|-----|-----------------------------|------------------|------------------------------------|------------------|---------------------------|
| 1 | Peak Power at +25°C | P _{max} | 1 | kW | 1µs max |
| 2 | Power | P | 0.8 | kW | See Figures 1(a) and 1(b) |
| 3 | Nominal Impedance | Z | 50 | Ω | - |
| 4 | Frequency Range | f | See Figure 2(b) | GHz | - |
| 5 | Voltage Rating | U _R | See Figure 2(b) (Voltage Proof) | V _{rms} | See Figure 1(c) |
| 6 | Operating Temperature Range | T _{op} | See Figure 2(b) | °C | - |
| 7 | Storage Temperature Range | T _{stg} | As per Operating Temperature Range | °C | - |

FIGURE 1 - PARAMETER DERATING INFORMATION

FIGURE 1(a) - POWER VERSUS TEMPERATURE

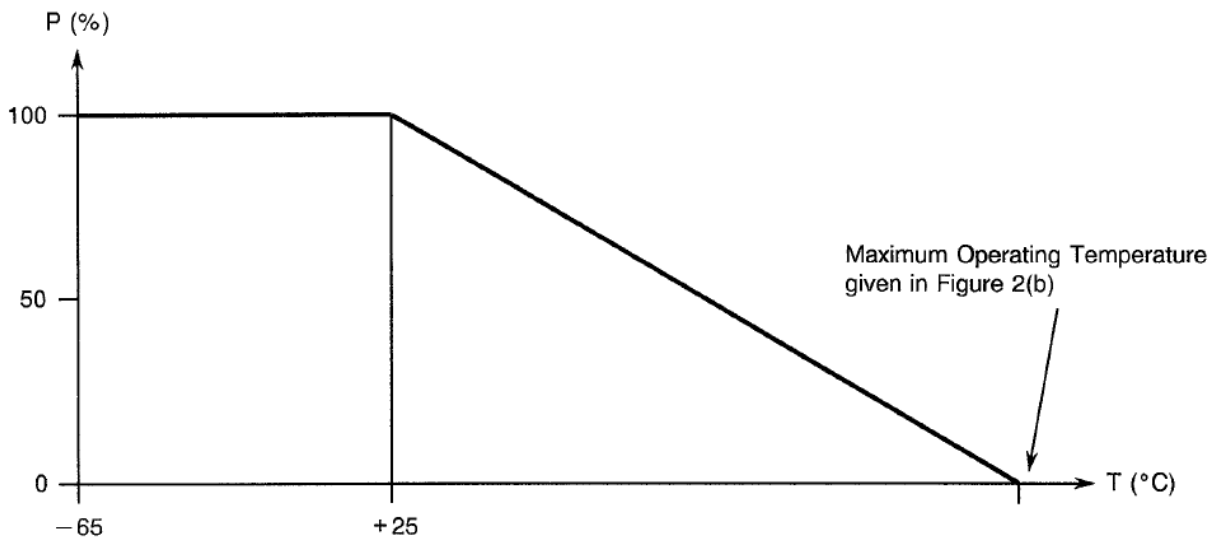
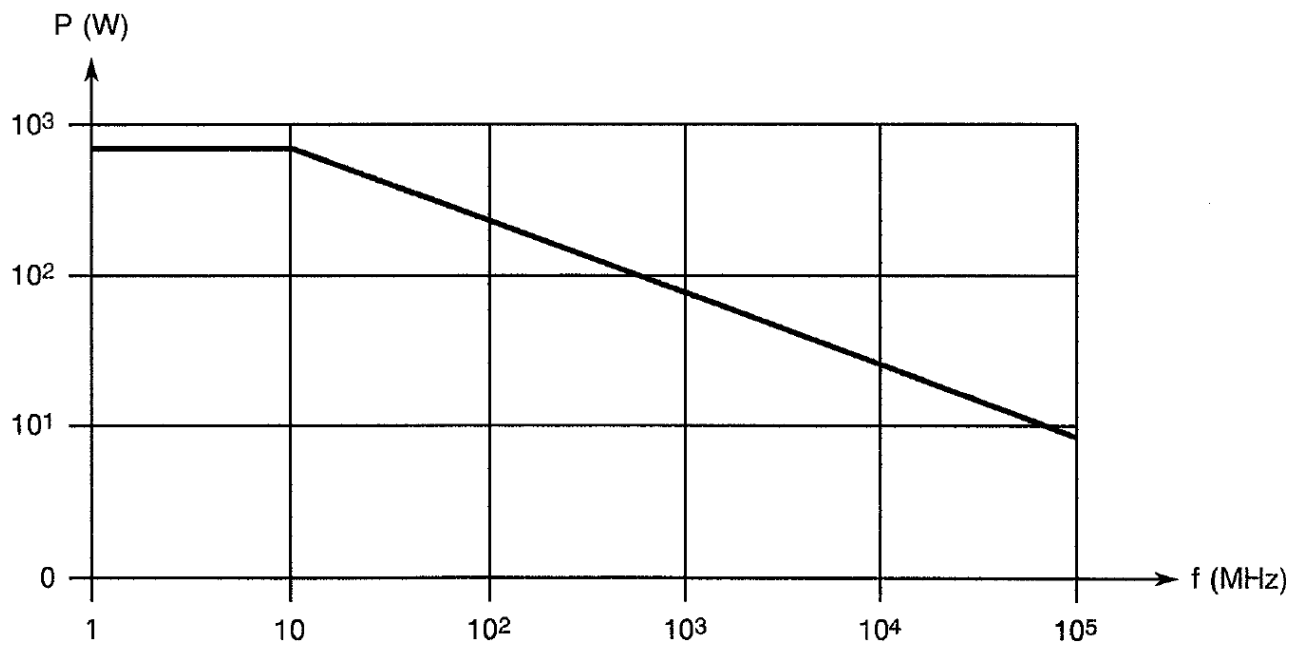


FIGURE 1(b) - POWER VERSUS FREQUENCY



POWER (VSWR in line 1) at $T_{amb} = +40^{\circ}C$.

FIGURE 1 – PARAMETER DERATING INFORMATION (CONTINUED)

FIGURE 1(c) – VOLTAGE DERATING AT LOW AIR PRESSURE

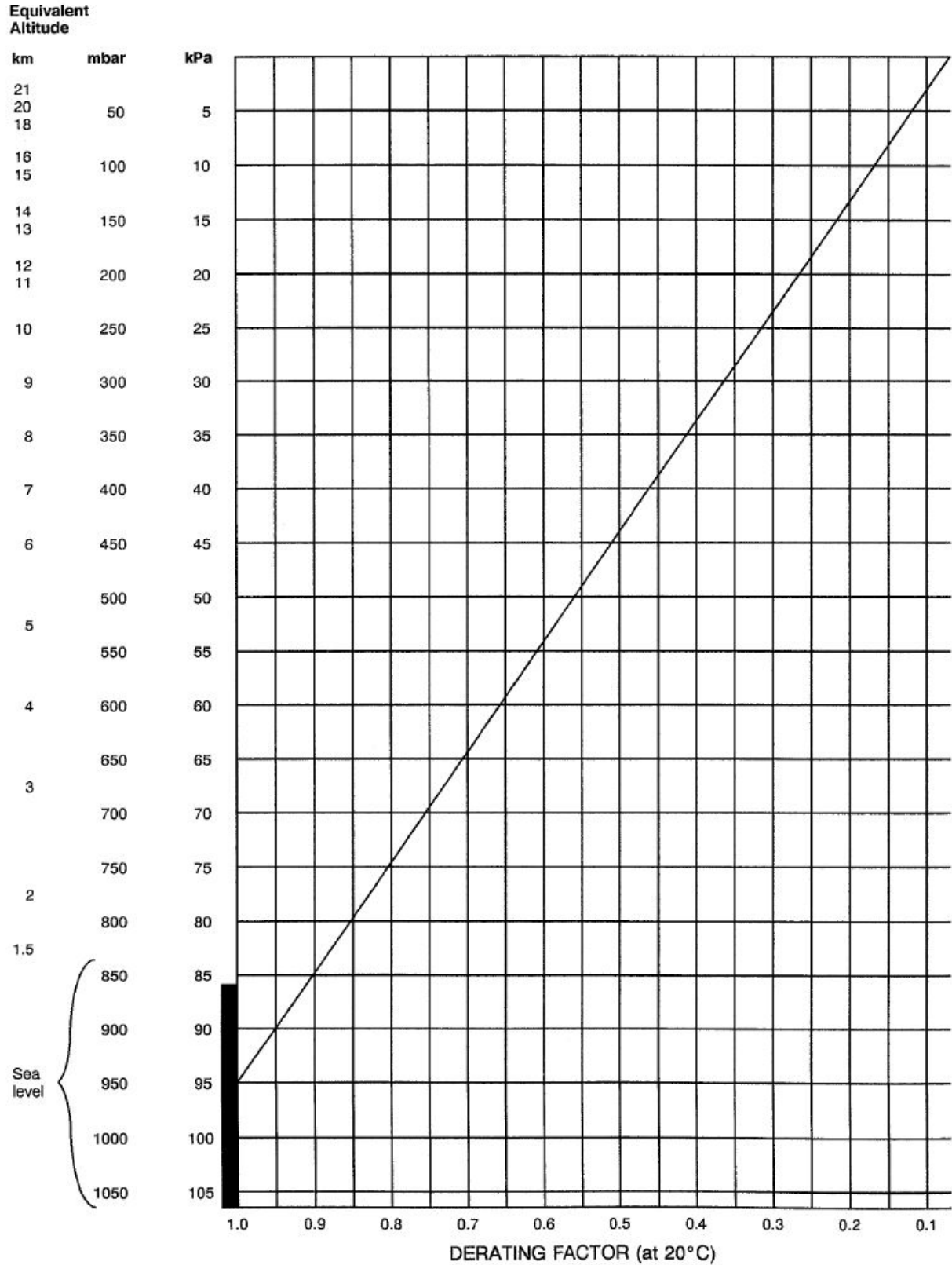
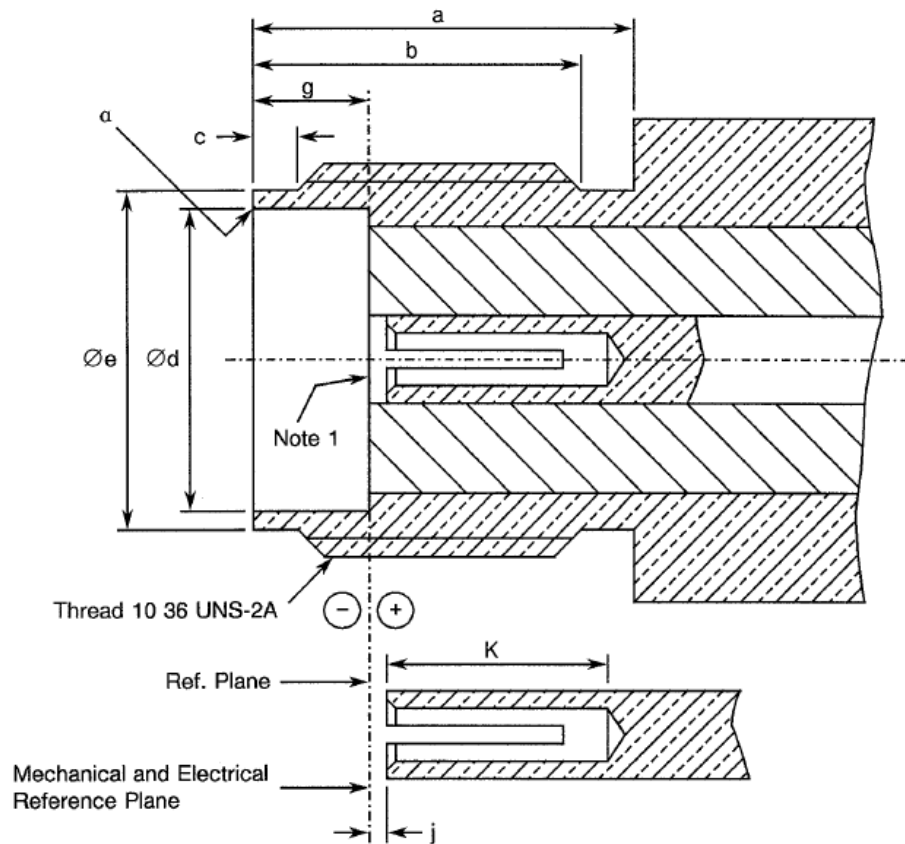


FIGURE 2 - PHYSICAL DIMENSIONS

FIGURE 2(a) - CONNECTOR INTERFACE, FEMALE CONTACT

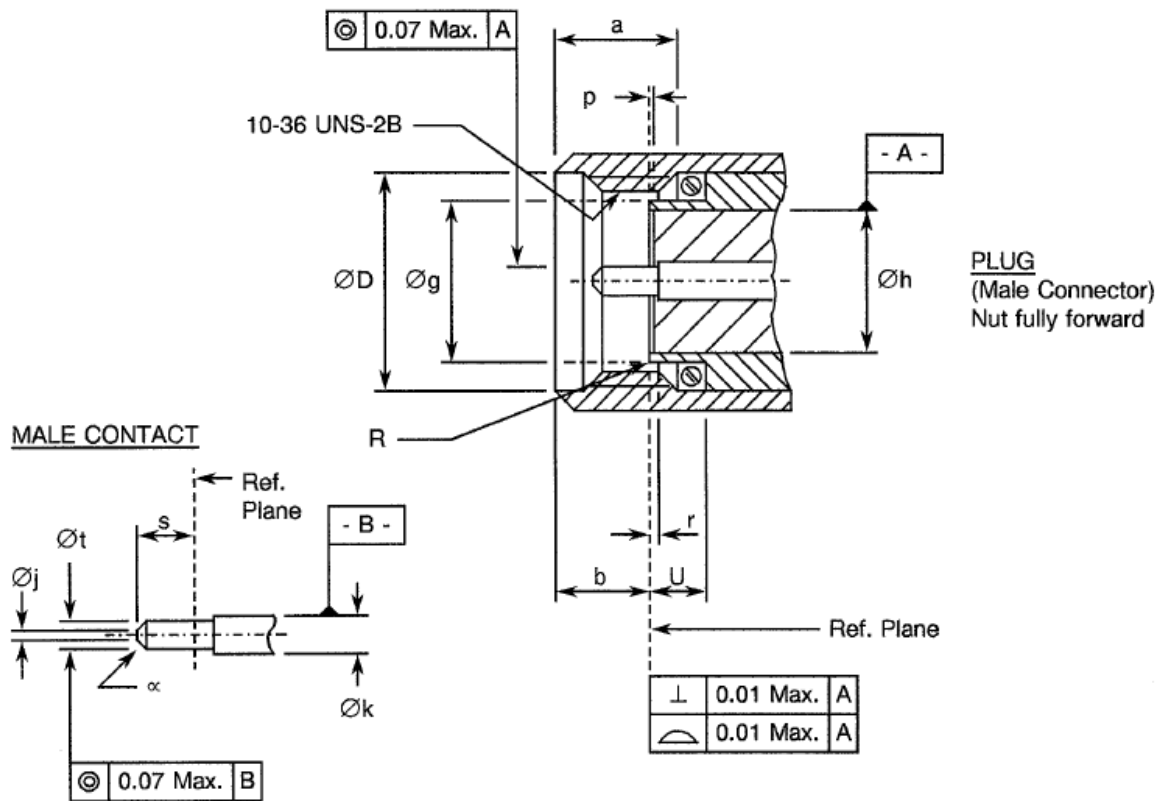


| Symbol | Millimetres | | Notes |
|--------|-------------|------|----------------------------|
| | Min. | Max. | |
| a | 3.56 | - | |
| b | 4.32 | - | |
| c | 0.38 | 1.14 | |
| Ød | 3.23 | 3.3 | |
| Øe | 3.89 | 4.06 | |
| g | 1.88 | 1.98 | |
| j | 0 | 0.41 | |
| K | 2.92 | - | |
| α | - | 0.13 | 45° Chamfer, no sharp edge |

NOTES

1. Face position relative to reference plane shall be within the limits of +0 to -0.18mm.

FIGURE 3 - STANDARD TEST CONNECTOR INTERFACE, MALE CONTACT



| Symbol | Millimetres | | Notes |
|-----------------|-------------|-------|--------------------------|
| | Min | Max | |
| a | 2.54 | 4.32 | |
| b | 2.59 | 3.35 | |
| $\varnothing D$ | 5.05 | 5.21 | |
| $\varnothing g$ | 3.17 | 3.22 | |
| $\varnothing h$ | 2.79 NOM. | | |
| $\varnothing j$ | - | 0.25 | Flat |
| $\varnothing k$ | | - | Note 1 |
| p | 0 | 0.05 | Insert recess |
| r | 0 | 0.076 | Contact recessed |
| R | - | 0.08 | Radius or chamfer |
| s | 1.4 | 1.65 | |
| $\varnothing t$ | 0.498 | 0.518 | |
| U | 2.03 | - | |
| α | - | - | $45 \pm 3^\circ$ Chamfer |

NOTES

1. Choose to give required performance.

2 APPLICABLE DOCUMENTS

The following documents form part of this specification and shall be read in conjunction with it:

- (a) ESCC Generic Specification No. [3402](#) for RF Coaxial Connectors.
- (b) MIL-G-45204, Gold Plating, Electrodeposited.
- (c) MIL-C-17/133, Cables, Radio Frequency, Coaxial, 0.0865 inch (2.2mm) Diameter, Semirigid, 50 Ohms.

3 TERMS, DEFINITIONS, ABBREVIATIONS, SYMBOLS AND UNITS

For the purpose of this specification, the terms, definitions, abbreviations, symbols and units specified in ESCC Basic Specification No. [21300](#) shall apply.

4 REQUIREMENTS

4.1 GENERAL

The complete requirements for procurement of the connectors specified herein are stated in this specification and ESCC Generic Specification No. [3402](#). Deviations from the Generic Specification applicable to this specification only, are listed in Para. 4.2.

Deviations from the applicable Generic Specification and this Detail Specification, formally agreed with specific Manufacturers on the basis that the alternative requirements are equivalent to the ESCC requirements and do not affect the components' reliability, are listed in the appendices attached to this specification.

4.2 DEVIATIONS FROM GENERIC SPECIFICATION

4.2.1 Deviations from Special In-process Controls

None.

4.2.2 Deviations from Final Production Tests (Chart II)

- (a) Para. 9.4, Coupling Proof Torque: shall not be performed on connectors with a female contact (only during Chart II).

4.2.3 Deviations from Burn-in and Electrical Measurements (Chart III)

- (a) Chart III is not applicable.

4.2.4 Deviations from Qualification Tests (Chart IV)

None

4.2.5 Deviations from Lot Acceptance Tests (Chart V)

None.

4.3 MECHANICAL REQUIREMENTS

4.3.1 Dimension Check

The dimensions of the connectors specified herein shall be verified in accordance with the requirements set out in Para. 9.25 of ESCC Generic Specification No. [3402](#) and shall conform to those shown in Figures 2(a) and 2(b) of this specification.

4.3.2 Weight

The maximum weight of the connectors specified herein shall be as specified in Figure 2(b).

4.3.3 Coupling Proof Torque

The requirements for testing of the coupling proof torque are specified in Section 9 of ESCC Generic Specification No. 3402. The applied torque shall be 110N.cm.

4.3.4 Cable Retention Force

The requirements for testing of the cable retention force are specified in Section 9 of ESCC Generic Specification No. 3402. Figure 2(b) specifies the values for axial loads. Torque shall be applied as follows:

4.3.4.1 *Flexible Cables*

Flexible cables shall be rotated 180° in both directions.
Rotational movement shall be applied at 15cm from the connector.

4.3.4.2 *Semi-rigid Cables*

The torque value shall be as follows:

M17/133-RG 405/U (MIL-C-17/133): 11.28N.cm.

4.3.5 Mating and Unmating Forces

The applicable measurement requirements are specified in Section 9 of ESCC Generic Specification No. 3402. The maximum torque during mating and unmating shall not exceed 12N.cm.

Whenever a test is performed on mated pairs of connectors, the pairs shall be torqued at 60-80N.cm.

4.3.6 Endurance

The applicable test requirements are specified in Section 9 of ESCC Generic Specification No. 3402. The test conditions shall be as follows:

- (a) Number of cycles: 500 for qualification; 100 for lot acceptance.
- (b) Rate: 12 cycles maximum/minute.

4.3.7 Residual Magnetism

The applicable measurement requirements are specified in Section 9 of ESCC Generic Specification No. 3402.

4.3.7.1 *Beryllium copper, copper underplate, gold-plated connectors*

The maximum allowable value shall not exceed 20 gammas.

4.3.7.2 *Beryllium copper, nickel underplate, gold-plated connectors*

There are no requirements in respect of residual magnetism. This version is made such that the residual magnetism does not exceed 2000 gammas.

4.3.7.3 *Stainless steel connectors*

Residual magnetism is not applicable to stainless steel versions.

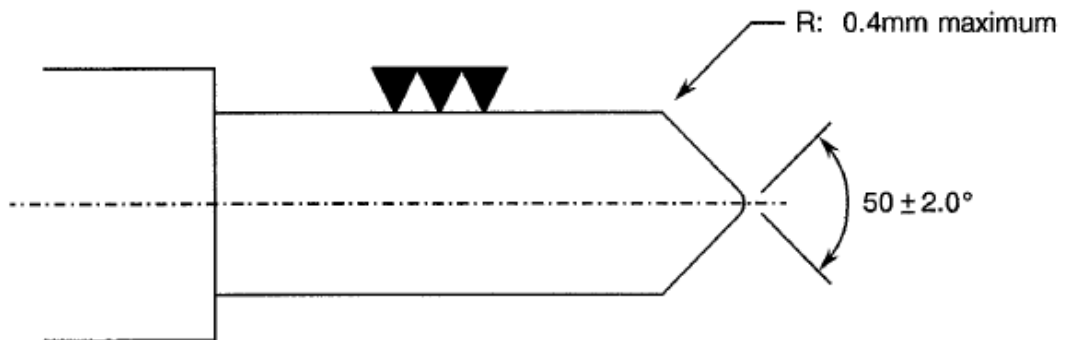
4.3.8 Contact Engagement and Separation Forces

The requirements for these measurements are specified in Section 9 of ESCC Generic Specification No. 3402 and apply to female contacts only.

- (a) **Oversize Pin**
 - Steel test pin diameter : 0.528/0.583 mm.
 - Insertion depth : 1.35 mm max.
 - Number of insertions : 3

- (b) **Withdrawal Force Test (Minimum Diameter Test Pin)**
 - Steel test pin diameter : 0.492/0.495 mm.
 - Insertion depth : 1.25 mm max.
 - Number of insertions : 25g min.

FIGURE 4 – TEST PIN CONFIGURATION



4.3.9 Contact Retention

The requirements for this test are specified in Section 9 of ESCC Generic Specification No. 3402. The test conditions are given in Figure 2(b). After testing, the connector interface dimensions shall be within the limits of Figure 2(a).

4.4 MATERIALS AND FINISHES

The materials and finishes shall be as specified herein. Where a definite material is not specified, a material which will enable the connectors specified herein to meet the performance requirements of this specification shall be used. Acceptance or approval of any constituent material does not guarantee acceptance of the finished product.

4.4.1 Gold Plated Versions

4.4.1.1 *Normal Types*

- (a) **Shell, Coupling Nut, Centre Contact**
 - Material : Beryllium copper.
 - Underplate : Nickel, 2µm minimum, or copper, 2.5µm minimum.
 - Plating : Gold, 2.5µm minimum, Class 2, Type 2 of MIL-G-45204.

- (b) **Inserts**
 - Material : PTFE.
 - Baking conditions : 10 cycles (-10, +55 °C). 1 cycle = 15 minutes minimum at each temperature with 5 minutes maximum transfer time.

- (c) Gaskets
Material : Silicone rubber.
- (d) Accessories (ferrule, crimping sleeve and nut)
Material : Brass.
Underplate : Nickel, 2µm minimum, or copper, 2.5µm minimum.
Plating : Gold, 2.5µm minimum, Class 2, Type 2 of MIL-G-45204.

4.4.1.2 Hermetic Types

- (a) Shell
Material : FN 42.
Underplate : Nickel, 2µm minimum.
Plating : Gold, 2.5µm minimum, Class 2, Type 2 of MIL-G-45204.
- (b) Insert
Material : Glass, Sovirel 747-01.
- (c) Centre Contact
Material : Steel, Silver P.
Underplate : Nickel, 2µm minimum.
Plating : Gold, 2.5µm minimum, Class 2, Type 2 of MIL-G-45204.

4.4.2 Stainless Steel Versions

- (a) Shell, Coupling Nut
Material : Amagnetic stainless steel, electro-passivated.
For solder-type connectors: rear part of shell shall be protected by an adequate coating for solderability.
- (b) Centre Contact
Material : Beryllium copper.
Underplate : Nickel, 2µm minimum.
Plating : Gold, 2.5µm minimum, Class 2, Type 2 of MIL-G-45204.
- (c) Inserts
Material : PTFE.
Baking conditions : 10 cycles (-10, +55 °C). 1 cycle = 15 minutes minimum at each temperature with 5 minutes maximum transfer time.
- (d) Gaskets
Material : Silicone.
- (e) Accessories
 - Crimping elements:
Material : Brass.
Underplate : Nickel, 2µm minimum.
Plating : Adequate for good solderability.
 - Nut:
Material : Amagnetic stainless steel, electro-passivated.
 - Washers:
Material : Beryllium copper.
Plating : Nickel, 2µm minimum

4.5 MARKING

4.5.1 General

The marking of components delivered to this specification shall be in accordance with the requirements of ESCC Basic Specification No. 21700 and the following paragraphs. When the component is too small to accommodate all of the marking specified, as much as space permits shall be marked and the marking information, in full, shall accompany the component in its primary package.

The information to be marked and the order of precedence, shall be as follows:

- (a) The ESCC Component Number.
- (b) Electrical Characteristics and Ratings.
- (c) Traceability Information.

4.5.2 The ESCC Component Number

Each component shall bear the ESCC Component Number which shall be constituted and marked as follows:

Example: 340200529B

- Detail Specification Number: 3402005
- Type Variant (see Table 1(a)): 29
- Testing Level (B or C, as applicable): B

4.5.3 Characteristics

Each component shall be marked in respect of:

- (a) Type of plating/material.
- (b) Subvariant.

The information shall be constituted and marked as follows:

Example: 102

- Plating/Material Type: 1
- Subvariant: 02

4.5.3.1 *Type of Plating/Material*

The type of plating/material shall be identified by means of the following codes:

| Code | Type of Plating/Material | Para. |
|------|-------------------------------|-------|
| 1 | Gold plate, copper underplate | 4.4.1 |
| 2 | Gold plate, nickel underplate | 4.4.1 |
| 3 | Amagnetic stainless steel | 4.4.2 |

For hermetic types (see Para. 4.4.1.2), only plating code 2 is available.

4.5.3.2 *Subvariants*

Subvariants are identified by 2 digits and are specified where applicable in Figure 2(b). When no subvariant is shown, the 2 digits shall be '01'.

4.5.4 Traceability Information

Each component shall be marked in respect of traceability information in accordance with the requirements of ESCC Basic Specification No. 21700.

4.6 ELECTRICAL MEASUREMENTS

4.6.1 Electrical Measurements at Room Temperature

The parameters to be measured in respect of electrical characteristics are scheduled in Table 2. Unless otherwise specified, the measurements shall be performed at $T_{amb} = +22 \pm 3^{\circ}C$.

4.6.2 Electrical Measurements at High and Low Temperatures (Table 3)

Not applicable.

4.6.3 Circuits for Electrical Measurements

Not applicable.

4.7 BURN-IN TESTS (TABLES 4 AND 5)

Not applicable.

TABLE 2 - ELECTRICAL MEASUREMENTS AT ROOM TEMPERATURE

| No. | Characteristics | Symbol | Spec. and/or test Method | Test Conditions | Limits | | Unit |
|-----|-----------------------|--------|--------------------------|-----------------|-----------------|------|------|
| | | | | | Min. | Max. | |
| 1 | Insulation Resistance | Ri | ESCC 3402, Para. 9.1 | 500 Vdc | 5000 | - | MΩ |
| 2 | Voltage Proof | Vp | ESCC 3402, Para. 9.2 | - | See Figure 2(b) | | |

TABLES 3, 4 AND 5

Not applicable.

- 4.8 ENVIRONMENTAL AND ENDURANCE TESTS (CHARTS IV AND V OF ESCC GENERIC SPECIFICATION NO. 3402)
- 4.8.1 Measurements and Inspections on Completion of Environmental Tests
The parameters to be measured and inspections to be performed on completion of environmental tests are scheduled in Table 6 of this specification. Unless otherwise stated, the measurements shall be performed at $T_{amb} = +22 \pm 3^{\circ}\text{C}$.
- 4.8.2 Measurements and Inspections at Intermediate Points during Endurance Tests
Not applicable.
- 4.8.3 Measurements and Inspections on Completion of Endurance Tests
The parameters to be measured and inspections to be performed on completion of endurance tests are scheduled in Table 6 of this specification. Unless otherwise stated, the measurements shall be performed at $T_{amb} = +22 \pm 3^{\circ}\text{C}$.
- 4.8.4 Conditions for Operating Life Tests (Part of Endurance Testing)
Not applicable.
- 4.8.5 Electrical Circuits for Operating Life Tests
Not applicable.
- 4.8.6 Conditions for High Temperature Storage Test (Part of Endurance Testing)
The requirements for the high temperature storage test are specified in Section 9 of ESCC Generic Specification No. 3402. The conditions for high temperature storage shall be the maximum operating temperature as specified in Figure 2(b).

TABLE 6 - MEASUREMENTS AND INSPECTIONS ON COMPLETION OF ENVIRONMENTAL AND ENDURANCE TESTS

| No. | ESCC Generic Spec. No. 3402 | | Measurements and Inspections | | Symbol | Limits | | Units |
|-----|---------------------------------------|--|--|---|--------------------|-------------|--|-------------------------|
| | Environmental and Endurance Tests (1) | Test Method and Conditions | Identification | Conditions | | Min. | Max. | |
| 01 | Coupling Proof Torque | Para. 9.4 | Final Measurements Interface Dimensions Visual Examination | - Para 9.4 of ESCC 3402 | - - | Figure 2(a) | | - - |
| 02 | Mating and Unmating Forces | Para. 9.5 | During Test Torque | Para. 4.3.5 | - | - | 12 | N.cm |
| 03 | Seal Test | Para. 9.7 | Hermeticity Leakage | If applicable As applicable | - - | - | 1.10 ⁻⁸ No Bubbles | cm ³ /s - |
| 04 | Contact Resistance | Para. 9.9 6V 10mA | During Test Contact Resistance | Centre Contact Shell Hermetic Centre Contact | - - - | - | 6.5 2 22 | mΩ mΩ mΩ |
| 05 | Vibration | Para. 9.10 Full Engagement | During Test Electrical Measurements Final Measurements Contact Resistance Visual Examination | Last Cycle in each direction No open or short circuits Centre Contact (6V 10mA) No evidence of damage | - - - - | - | - - 6.5 - | - - mΩ - |
| 06 | Shock or Bump | Para. 9.11 Full Engagement | Final Measurements Contact Resistance Visual Examination | Centre Contact (6V 10mA) No evidence of damage | - - | - | 6.5 - | mΩ - |
| 07 | Rapid Change of Temperature | Para. 9.12 | Final Measurements Contact Resistance Voltage Proof Visual Examination | After a recovery period of 24 ±2hrs Centre Contact (6V 10mA) Table 2 Item 2 - | - Vp - | - | 6.5 Figure 2(b) - | mΩ - - |
| 08 | Climatic Sequence | Para. 9.13 | During Test Voltage Proof Final Measurements Insulation Resistance Voltage Proof External Visual Inspection | At Low Air Pressure No flashover or breakdown After Final Damp Heat cycle (within 1 to 24 hrs recovery) Table 2 Item 1 Table 2 item 2 Para. 9.8 of ESCC 3402 | - Ri Vp - | - | - 200 Figure 2(b) - | MΩ - - |
| 09 | Cable Retention Force | Para. 9.14 and Para. 4.3.4 of this spec. | During Test Continuity | - | - | - | - | - |
| 10 | Cabling and Crimping Capability | Para. 9.15 | Visual Examination Dimensions Insulation Resistance Voltage Proof | Para 9.15 of ESCC 3402 Para 9.15 of ESCC 3402 Table 2 Item 1 Table 2 Item 2 | - - Ri Vp | - | Fig 2(a) & 2(b) 5000 Figure 2(b) | - - MΩ - |
| 11 | VSWR or Reflection Coefficient | Para. 9.16 | VSWR | Para. 9.16 of ESCC 3402 | - | - | Figure 2(b) | - |

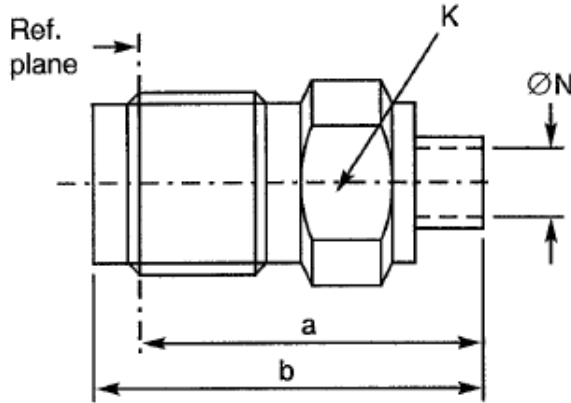
| No. | ESCC Generic Spec. No. 3402 | | Measurements and Inspections | | Symbol | Limits | | Units |
|-----|---------------------------------------|--|--|---|---|---|--|--|
| | Environmental and Endurance Tests (1) | Test Method and Conditions | Identification | Conditions | | Min. | Max. | |
| 12 | Corona Level | Para. 9.17 | Corona | Para. 9.17 of ESCC 3402 | - | Figure 2(b) | | - |
| 13 | Endurance | Para. 9.18 and Para. 4.3.6 of this spec. | Final Measurements Mating/Unmating Forces Contact Resistance Visual Examination | Para. 4.3.5 Centre Contact (6V 10mA) Shell (6V 10mA) Hermetic Centre Contact Para. 9.18 of ESCC 3402 | - - - - | - - - - | 12 9 3 27 - | N.cm mΩ mΩ - - |
| 14 | RF Insertion Loss | Para. 9.19 | Insertion Loss | Para. 9.19 of ESCC 3402 | - | Figure 2(b) | | - |
| 15 | Corrosion | Para. 9.20 | Visual Examination | Para. 9.20 of ESCC 3402 No exposure of base metal | - | - | - | - |
| 16 | Residual Magnetism | Para. 9.21 | Magnetism | - | - | Para. 4.3.7 | | - |
| 17 | Soldering Proof | Para. 9.22 | Final Measurements Interface Dimensions Mating/Unmating Forces Insulation Resistance Voltage Proof Contact Resistance External Visual Inspection | - Para. 4.3.5 Table 2 Item 1 Table 2 Item 2 Centre Contact Shell Hermetic Centre Contact Para. 9.8 of ESCC 3402 | - - Ri Vp - - - - | Figure 2(b) - 5000 Figure 2(b) - - - - | 12 - - 6.5 2 22 - | - N.cm MΩ - mΩ mΩ - - |
| 18 | RF Leakage | Para. 9.23 | Leakage | - | - | Figure 2(b) | | - |
| 19 | High Temperature Storage | Para. 9.24 and Para. 4.8.6 of this spec. | Final Measurements Mating/Unmating Forces Insulation Resistance Voltage Proof Contact Retention Visual Examination Contact Resistance External Visual Inspection | Para. 4.3.5 Table 2 Item 1 Table 2 item 2 Para. 4.3.9 - Centre Contact Shell Hermetic Centre Contact Para. 9.8 of ESCC 3402 | - Ri Vp - - - - - - | - 5000 Figure 2(b) Para. 4.3.9 - - - - | 12 - - - - 18 7.5 34 - | N.cm MΩ - - - mΩ mΩ mΩ - |

NOTES

1. The tests in this Table refer to either Chart IV or V and shall be used as applicable.

FIGURE 2(b) – VARIANTS

VARIANT 01 – STRAIGHT JACK, SOLDER TYPE, FOR SEMI-RIGID CABLE Ø2.2mm (0.085")



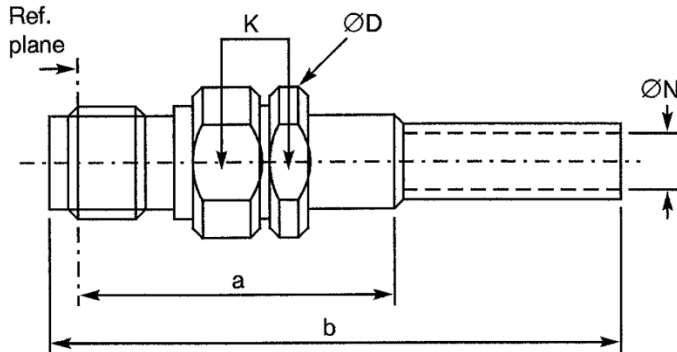
| Symbol | Millimetres | | Notes |
|--------|-------------|------|-------|
| | Min. | Max. | |
| a | 10.5 NOM. | | |
| b | 12.5 NOM. | | |
| K | 6.35 NOM. | | Flats |
| ØN | 2.25 NOM. | | |

| ELECTRICAL CHARACTERISTICS | VALUES | UNITS |
|--|------------------------|-------|
| Frequency range | 0 to 18 | GHz |
| Maximum voltage standing wave ratio (VSWR) | 1.05 + 0.015 f (GHz) | |
| Maximum reflection coefficient | 0.024 + 0.0063 f (GHz) | |
| Maximum insertion loss | 0.03 √f (GHz) | dB |
| RF leakage | -[100 - f (GHz)] | dB |
| Voltage proof | 750 | Vrms |
| Corona level | 190 | Vrms |

| MECHANICAL CHARACTERISTICS | VALUES | UNITS |
|---|----------------|-------|
| Mini centre contact retention force (axial) | Not applicable | N |
| Mini centre contact retention torque | Not applicable | N.cm |
| Mini cable retention force | 200 | N |
| Mini cable retention torque value | 11.5 | N.cm |
| Maximum weight | 1.3 | g |

| OTHER CHARACTERISTICS | VALUES | UNITS |
|--|--------------------------|-------|
| Rapid change of temperature - peak value | +115 | °C |
| Operating temperature range | -55 to +105 | °C |
| Maxi leakage (panel sealed connectors) | Not applicable | |
| Maxi leakage (hermetic sealed connector) | Not applicable | |
| Solderability | Applicable | |
| Soldering proof | Not applicable | |
| Cables used | KS 1, RG 405/U, (Ø2.2mm) | |

FIGURE 2(b) – VARIANTS (CONTINUED)
VARIANT 06 – STRAIGHT JACK, CRIMP-TYPE



| Symbol | Millimetres | | Notes |
|--------|-------------|------|---------|
| | Min. | Max. | |
| a | 22.5 NOM. | | |
| b | 36.4 NOM. | | |
| ØD | 7 NOM. | | |
| K | 6.35 NOM | | 2 flats |
| ØN | | | Note 1 |

NOTES

1. Shall accept cables specified in the table below.

| ELECTRICAL CHARACTERISTICS | VALUES | UNITS |
|--|-----------------------|-------|
| Frequency range | 0 to 12.4 | GHz |
| Maximum voltage standing wave ratio (VSWR) | $1.2 + 0.025 f$ (GHz) | |
| Maximum reflection coefficient | $0.09 + 0.01 f$ (GHz) | |
| Maximum insertion loss | $0.03 \sqrt{f}$ (GHz) | dB |
| RF leakage | $-[95 - f]$ (GHz) | dB |
| Voltage proof | 750 | Vrms |
| Corona level | 190 | Vrms |

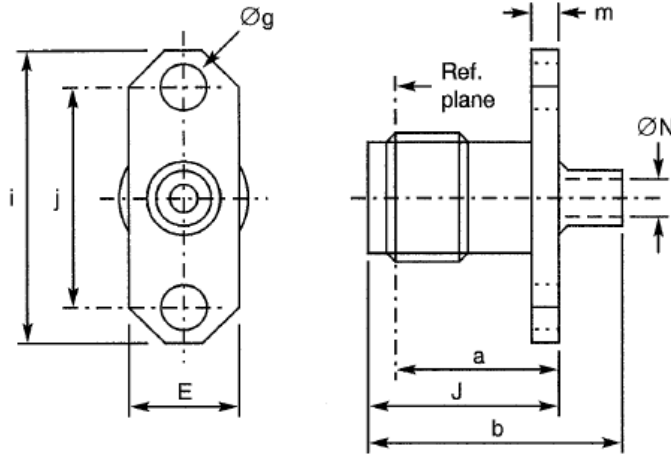
| MECHANICAL CHARACTERISTICS | VALUES | UNITS |
|---|--------------------------------|-------|
| Mini centre contact retention force (axial) | 22 | N |
| Mini centre contact retention torque | 0.5 | N.cm |
| Mini cable retention force | (1) 80; (2) 110 | N |
| Mini cable retention torque value | 2 x 180° applic. point 50 x ØN | |
| Maximum weight | 2.3 | g |

| OTHER CHARACTERISTICS | VALUES | UNITS |
|--|---|---------------------------------------|
| Rapid change of temperature - peak value | +200 (see cables used) | °C |
| Operating temperature range | -55 to +155 | °C |
| Maxi leakage (panel sealed connectors) | Not applicable | |
| Maxi leakage (hermetic sealed connector) | Not applicable | |
| Solderability | Applicable | |
| Soldering proof | Not applicable | |
| Cables used | (1) Filotex 50 CIS (2) KX 3B – KX 22A RG 174/U – RG 316/U | ØN = 2.1 ±0.1 ØN = 3.25 ±0.1 mm |

FIGURE 2(b) – VARIANTS (CONTINUED)

VARIANT 09 - STRAIGHT JACK, SOLDER TYPE, FLANGE-MOUNTED, FOR SEMI-RIGID CABLE Ø2.2mm (0.085")

Subvariant 01 – 2-Hole Flange Version

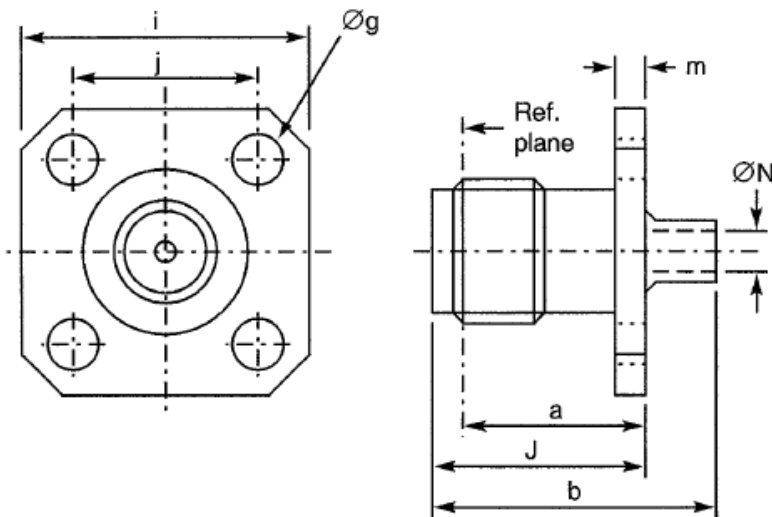


| Symbol | Millimetres | | Notes |
|--------|-------------|------|---------|
| | Min. | Max. | |
| a | 7.6 NOM. | | |
| b | 12.5 NOM. | | |
| E | 4.7 NOM | | |
| Øg | 2.4 NOM. | | 2 holes |
| i | 12 NOM. | | |
| j | 8.34 NOM. | | |
| J | 9.5 NOM. | | |
| m | 1.7 NOM. | | |
| ØN | 2.25 NOM. | | |

NOTES

- Maximum panel thickness: 2.3 mm.

Subvariant 02 – Square Flange Version



| Symbol | Millimetres | | Notes |
|--------|-------------|------|---------|
| | Min. | Max. | |
| a | 7.6 NOM. | | |
| b | 12.5 NOM. | | |
| Øg | 2.4 NOM. | | 4 holes |
| i | 9.5 NOM. | | Square |
| j | 5.9 NOM. | | Square |
| J | 9.5 NOM. | | |
| m | 1.7 NOM. | | |
| ØN | 2.25 NOM. | | |

FIGURE 2(b) – VARIANTS (CONTINUED)

VARIANT 09 - STRAIGHT JACK, SOLDER TYPE, FLANGE-MOUNTED, FOR SEMI-RIGID CABLE Ø2.2mm (0.085") (CONTINUED)

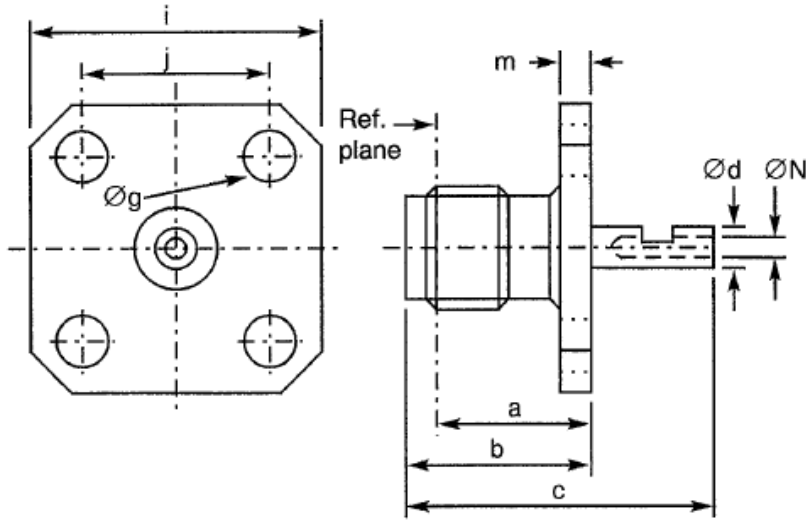
| ELECTRICAL CHARACTERISTICS | VALUES | UNITS |
|--|------------------------|-------|
| Frequency range | 0 to 18 | GHz |
| Maximum voltage standing wave ratio (VSWR) | 1.05 + 0.015 f (GHz) | |
| Maximum reflection coefficient | 0.024 + 0.0063 f (GHz) | |
| Maximum insertion loss | 0.03 √f (GHz) | dB |
| RF leakage | - [100 - f (GHz)] | dB |
| Voltage proof | 750 | Vrms |
| Corona level | 190 | Vrms |

| MECHANICAL CHARACTERISTICS | VALUES | UNITS |
|---|-------------------------------|-------|
| Mini centre contact retention force (axial) | Not applicable | N |
| Mini centre contact retention torque | Not applicable | N.cm |
| Mini cable retention force | 200 | N |
| Mini cable retention torque value | 11.5 | N.cm |
| Maximum weight | Subvariant 01: 2.5 02: 3 | g |

| OTHER CHARACTERISTICS | VALUES | UNITS |
|--|--------------------------|-------|
| Rapid change of temperature - peak value | +115 | °C |
| Operating temperature range | -55 to +105 | °C |
| Maxi leakage (panel sealed connectors) | Not applicable | |
| Maxi leakage (hermetic sealed connector) | Not applicable | |
| Solderability | Applicable | |
| Soldering proof | Not applicable | |
| Cables used | KS 1, RG 405/U, (Ø2.2mm) | |

FIGURE 2(b) – VARIANTS (CONTINUED)

VARIANT 15 – SQUARE FLANGE RECEPTACLE



| Symbol | Millimetres | | Notes |
|--------|-------------|------|---------|
| | Min. | Max. | |
| a | 7.6 NOM. | | |
| b | 9.5 NOM. | | |
| c | 12.5 NOM. | | |
| Ød | 0.85 NOM. | | |
| Øg | 2.4 NOM. | | 4 holes |
| i | 9.5 NOM. | | Square |
| j | 5.9 NOM. | | Square |
| m | 1.7 NOM. | | |
| ØN | 0.6 NOM. | | |

| ELECTRICAL CHARACTERISTICS | VALUES | UNITS |
|--|-------------------------|-------|
| Frequency range | 0 to 18 | GHz |
| Maximum voltage standing wave ratio (VSWR) (1) | $1.07 + 0.01 f$ (GHz) | |
| Maximum reflection coefficient (1) | $0.034 + 0.004 f$ (GHz) | |
| Maximum insertion loss (1) | $0.03 \sqrt{f}$ (GHz) | dB |
| RF leakage (1) | - [95 - f (GHz)] | dB |
| Voltage proof | 750 | Vrms |
| Corona level | Not applicable | Vrms |

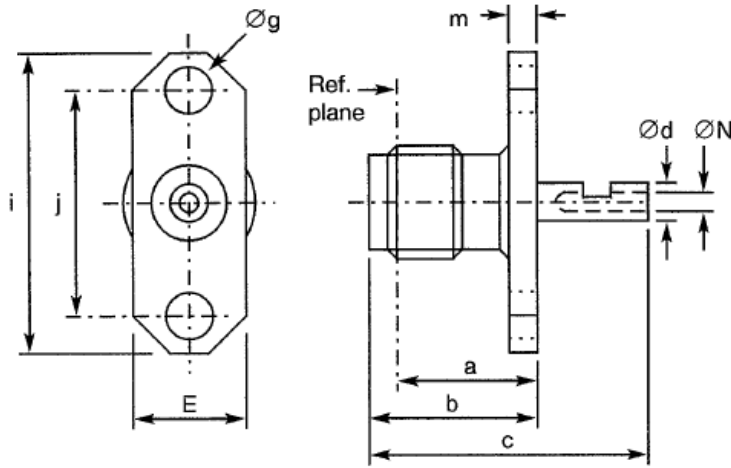
NOTES

- For information only.

| MECHANICAL CHARACTERISTICS | VALUES | UNITS |
|---|----------------|-------|
| Mini centre contact retention force (axial) | 22 | N |
| Mini centre contact retention torque | 1.8 | N.cm |
| Mini cable retention force | Not applicable | N |
| Mini cable retention torque value | Not applicable | N.cm |
| Maximum weight | 1.3 | g |

| OTHER CHARACTERISTICS | VALUES | UNITS |
|--|------------------------|-------|
| Rapid change of temperature - peak value | +115 | °C |
| Operating temperature range | -65 to +105 | °C |
| Maxi leakage (panel sealed connectors) | Not applicable | |
| Maxi leakage (hermetic sealed connector) | Not applicable | |
| Solderability | On centre contact only | |
| Soldering proof | Applicable | |
| Cables used | Not applicable | |

FIGURE 2(b) – VARIANTS (CONTINUED)
VARIANT 17 – 2-HOLE FLANGE RECEPTACLE



| Symbol | Millimetres | | Notes |
|--------|-------------|------|---------|
| | Min. | Max. | |
| a | 7.6 NOM. | | |
| b | 9.5 NOM. | | |
| c | 12.5 NOM. | | |
| Ød | 0.85 NOM. | | |
| E | 4.7 NOM. | | |
| Øg | 2.4 NOM. | | 2 holes |
| i | 12 NOM. | | |
| j | 8.34 NOM. | | |
| m | 1.7 NOM. | | |
| ØN | 0.6 NOM. | | |

| ELECTRICAL CHARACTERISTICS | VALUES | UNITS |
|--|-----------------------|-------|
| Frequency range | 0 to 18 | GHz |
| Maximum voltage standing wave ratio (VSWR) (1) | 1.07 + 0.01 f (GHz) | |
| Maximum reflection coefficient (1) | 0.034 + 0.004 f (GHz) | |
| Maximum insertion loss (1) | 0.03 √f (GHz) | dB |
| RF leakage (1) | - [95 - f (GHz)] | dB |
| Voltage proof | 750 | Vrms |
| Corona level | Not applicable | Vrms |

NOTES

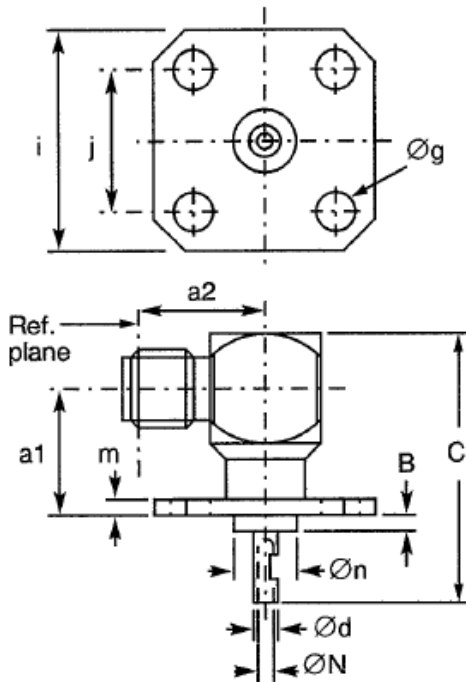
1. For information only.

| MECHANICAL CHARACTERISTICS | VALUES | UNITS |
|---|----------------|-------|
| Mini centre contact retention force (axial) | 22 | N |
| Mini centre contact retention torque | 1.8 | N.cm |
| Mini cable retention force | Not applicable | N |
| Mini cable retention torque value | Not applicable | N.cm |
| Maximum weight | 1.1 | g |

| OTHER CHARACTERISTICS | VALUES | UNITS |
|--|------------------------|-------|
| Rapid change of temperature - peak value | +115 | °C |
| Operating temperature range | -65 to +105 | °C |
| Maxi leakage (panel sealed connectors) | Not applicable | |
| Maxi leakage (hermetic sealed connector) | Not applicable | |
| Solderability | On centre contact only | |
| Soldering proof | Applicable | |
| Cables used | Not applicable | |

FIGURE 2(b) – VARIANTS (CONTINUED)

VARIANT 27 – ELBOW RECEPTACLE, SQUARE FLANGE



| Symbol | Millimetres | | Notes |
|--------|-------------|------|---------|
| | Min. | Max. | |
| a1 | 7.4 NOM. | | |
| a2 | 8.3 NOM. | | |
| B | 1.6 NOM. | | |
| C | 14.5 NOM. | | |
| Ød | 0.85 NOM. | | |
| Øg | 2.4 NOM. | | 4 holes |
| i | 9.5 NOM. | | Square |
| j | 5.9 NOM. | | Square |
| m | 1.7 NOM. | | |
| Øn | 2.7 NOM. | | |
| ØN | 0.6 NOM. | | |

| ELECTRICAL CHARACTERISTICS | | VALUES | UNITS |
|--|-----|------------------------|-------|
| Frequency range | | 0 to 18 | GHz |
| Maximum voltage standing wave ratio (VSWR) | (1) | $1.1 + 0.025 f$ (GHz) | |
| Maximum reflection coefficient | (1) | $0.047 + 0.01 f$ (GHz) | |
| Maximum insertion loss | (1) | $0.03 \sqrt{f}$ (GHz) | dB |
| RF leakage | (1) | $- [95 - f]$ (GHz) | dB |
| Voltage proof | | 750 | Vrms |
| Corona level | | Not applicable | Vrms |

NOTES

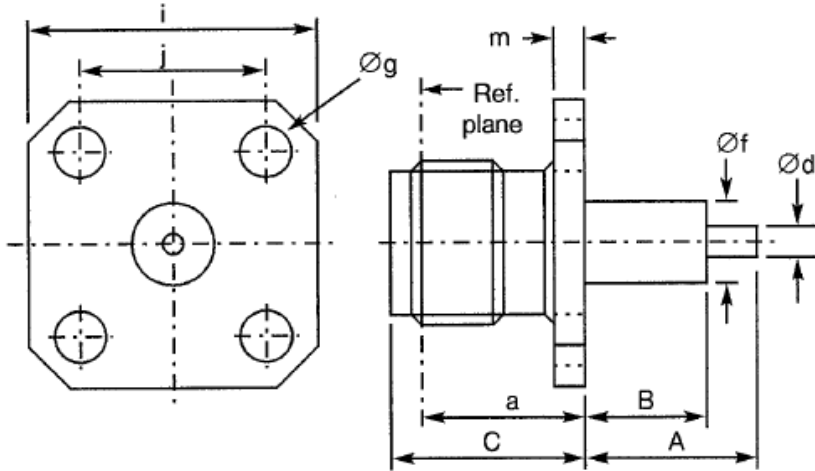
1. For information only.

| MECHANICAL CHARACTERISTICS | | VALUES | UNITS |
|---|--|----------------|-------|
| Mini centre contact retention force (axial) | | 22 | N |
| Mini centre contact retention torque | | 1.8 | N.cm |
| Mini cable retention force | | Not applicable | N |
| Mini cable retention torque value | | Not applicable | N.cm |
| Maximum weight | | 2.5 | g |

| OTHER CHARACTERISTICS | | VALUES | UNITS |
|--|--|------------------------|-------|
| Rapid change of temperature - peak value | | +200 | °C |
| Operating temperature range | | -55 to +155 | °C |
| Maxi leakage (panel sealed connectors) | | Not applicable | |
| Maxi leakage (hermetic sealed connector) | | Not applicable | |
| Solderability | | On centre contact only | |
| Soldering proof | | Applicable | |
| Cables used | | Not applicable | |

FIGURE 2(b) – VARIANTS (CONTINUED)

VARIANT 29 – SQUARE FLANGE RECEPTACLE



| Symbol | Millimetres | | Notes |
|--------|---------------|------|---------|
| | Min. | Max. | |
| a | 7.6 NOM. | | |
| A | See next page | | |
| B | See next page | | |
| C | 9.5 NOM. | | |
| Ød | 0.85 NOM. | | |
| Øf | 2.7 NOM. | | |
| Øg | 2.4 NOM. | | 4 holes |
| i | 9.5 NOM. | | Square |
| j | 5.9 NOM. | | Square |
| m | 1.7 NOM. | | |

| ELECTRICAL CHARACTERISTICS | VALUES | UNITS |
|--|-----------------------|-------|
| Frequency range | 0 to 18 | GHz |
| Maximum voltage standing wave ratio (VSWR) | 1.07 + 0.01 f (GHz) | |
| Maximum reflection coefficient | 0.034 + 0.004 f (GHz) | |
| Maximum insertion loss (1) | 0.03 √f (GHz) | dB |
| RF leakage (1) | - [95 - f (GHz)] | dB |
| Voltage proof | 750 | Vrms |
| Corona level | Not applicable | Vrms |

NOTES

1. For information only.

| MECHANICAL CHARACTERISTICS | VALUES | UNITS |
|---|----------------|-------|
| Mini centre contact retention force (axial) | 22 | N |
| Mini centre contact retention torque | 1.8 | N.cm |
| Mini cable retention force | Not applicable | N |
| Mini cable retention torque value | Not applicable | N.cm |
| Maximum weight | 2 | g |

| OTHER CHARACTERISTICS | VALUES | UNITS |
|--|------------------------|-------|
| Rapid change of temperature - peak value | +115 | °C |
| Operating temperature range | -65 to +105 | °C |
| Maxi leakage (panel sealed connectors) | Not applicable | |
| Maxi leakage (hermetic sealed connector) | Not applicable | |
| Solderability | On centre contact only | |
| Soldering proof | Applicable | |
| Cables used | Not applicable | |

FIGURE 2(b) – VARIANTS (CONTINUED)

VARIANT 29 – SQUARE FLANGE RECEPTACLE (CONTINUED)

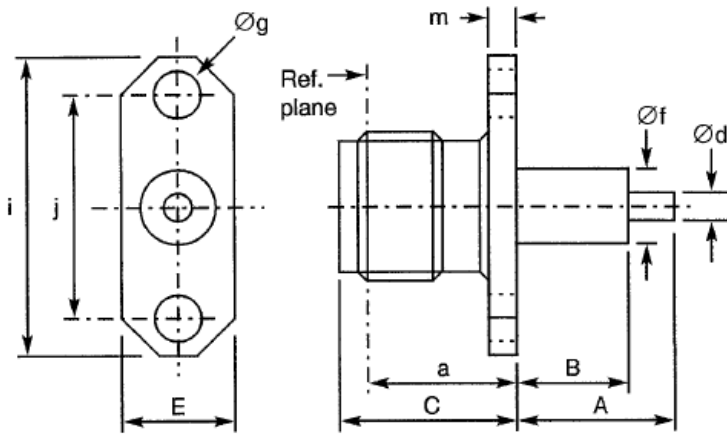
| Subvariant No. | A (Contact) | | B (Insert) | |
|----------------|----------------|-------|---------------|-------|
| | Min. | Max. | Min. | Max. |
| 01 | 11.83 | 11.87 | 5.9 | 6.1 |
| 02 | 26.4 | 26.6 | -0.05 | +0.05 |
| 03 | 15.8 | 16.6 | 12.6 | 12.8 |
| 04 | 3.1 | 3.2 | 1.55 | 1.75 |
| 05 | 2.5 | 2.7 | 0.25 | 0.3 |
| 06 | 9.2 | 9.3 | 4 | 4.2 |
| 07 | 20.4 | 20.6 | 4 | 4.2 |
| 08 | 8.9 | 9.1 | 2.9 | 3.1 |
| 09 | 9.9 | 10.1 | 4.8 | 4.9 |
| 10 | 12.78 | 12.88 | -0.05 | +0.05 |
| 11 | 5.9 | 6.1 | 1.9 | 2.1 |
| 12 | 7.6 | 7.8 | 2.85 | 3.05 |
| 13 | 15.9 | 16.1 | 2.85 | 3.05 |
| 14 | 4.1 | 4.3 | -0.05 | +0.05 |
| 15 | 10.9 | 11 | 7.9 | 8 |
| 16 | 4.55 | 4.65 | 3.25 | 3.35 |
| 17 | 5.9 | 6.1 | 2.45 | 2.55 |
| 18 | 8.3 | 8.5 | 1.27 | 1.37 |
| 19 | 4.05 | 4.15 | 1.24 | 1.3 |
| 20 | - | - | - | - |
| 21 | 20.4 | 20.6 | 17.9 | 18.1 |
| 22 | 14.8 | 15.2 | 11.8 | 12.2 |
| 23 | 8.4 | 8.45 | -0.05 | +0.05 |
| 24 | 17.8 | 18 | 14.9 | 15.1 |
| 25 | 13.95 | 14.05 | 3.9 | 3.95 |
| 26 | 10 | 10.1 | 5.76 | 5.81 |
| 27 | 2.5 | 2.7 | 2.4 | 2.6 |
| 28 | 4 | 4.2 | 3.9 | 4.1 |
| 29 | 8.4 | 8.6 | 8.3 | 8.5 |
| 30 | 6.985 | 7.035 | 3.92 | 4.08 |
| 31 | 39.9 | 40.1 | -0.05 | +0.05 |
| 32 | - | - | - | - |
| 33 | - | - | - | - |
| 34 | 9.9 | 10.1 | 3.02 | 3.1 |

NOTES

1. All dimensions in millimetres.

FIGURE 2(b) – VARIANTS (CONTINUED)

VARIANT 30 – 2-HOLE FLANGE RECEPTACLE



| Symbol | Millimetres | | Notes |
|--------|---------------|------|---------|
| | Min. | Max. | |
| a | 7.6 NOM. | | |
| A | See next page | | |
| B | See next page | | |
| C | 9.5 NOM. | | |
| Ød | 0.85 NOM. | | |
| E | 4.7 NOM. | | |
| Øf | 2.7 NOM. | | |
| Øg | 2.4 NOM. | | 2 holes |
| i | 12 NOM. | | |
| j | 8.34 NOM. | | |
| m | 1.7 NOM. | | |

| ELECTRICAL CHARACTERISTICS | VALUES | UNITS |
|--|-------------------------|-----------|
| Frequency range | 0 to 18 | GHz |
| Maximum voltage standing wave ratio (VSWR) | $1.07 + 0.01 f$ (GHz) | For B = 0 |
| Maximum reflection coefficient | $0.034 + 0.004 f$ (GHz) | For B = 0 |
| Maximum insertion loss (1) | $0.03 \sqrt{f}$ (GHz) | dB |
| RF leakage (1) | $- [95 - f]$ (GHz) | dB |
| Voltage proof | 750 | Vrms |
| Corona level | Not applicable | Vrms |

NOTES

1. For information only.

| MECHANICAL CHARACTERISTICS | VALUES | UNITS |
|---|----------------|-------|
| Mini centre contact retention force (axial) | 22 | N |
| Mini centre contact retention torque | 1.8 | N.cm |
| Mini cable retention force | Not applicable | N |
| Mini cable retention torque value | Not applicable | N.cm |
| Maximum weight | 1.5 | g |

| OTHER CHARACTERISTICS | VALUES | UNITS |
|--|------------------------|-------|
| Rapid change of temperature - peak value | +115 | °C |
| Operating temperature range | -65 to +105 | °C |
| Maxi leakage (panel sealed connectors) | Not applicable | |
| Maxi leakage (hermetic sealed connector) | Not applicable | |
| Solderability | On centre contact only | |
| Soldering proof | Applicable | |
| Cables used | Not applicable | |

FIGURE 2(b) – VARIANTS (CONTINUED)

VARIANT 30 – 2-HOLE FLANGE RECEPTACLE (CONTINUED)

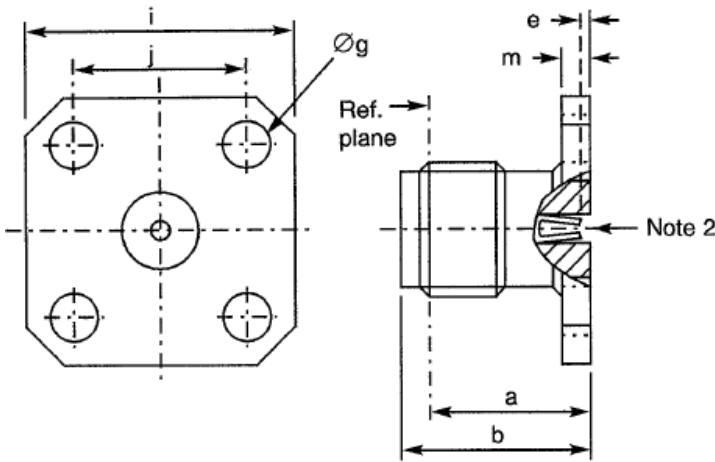
| Subvariant No. | A (Contact) | | B (Insert) | |
|----------------|----------------|------|---------------|-------|
| | Min. | Max. | Min. | Max. |
| 01 | 12.3 | 12.7 | 4.8 | 4.9 |
| 02 | 15.8 | 16 | 0.4 | 0.6 |
| 03 | 10.9 | 11 | 0.9 | 1 |
| 04 | 11.9 | 12.1 | 2.9 | 3.1 |
| 05 | 17.8 | 18 | 14.9 | 15.1 |
| 06 | 2.2 | 2.4 | -0.05 | +0.05 |
| 07 | 4.2 | 4.6 | -0.05 | +0.05 |
| 08 | - | - | - | - |
| 09 | 4.7 | 5.3 | 2.3 | 2.5 |
| 10 | 6.9 | 7.1 | 6.8 | 7 |
| 11 | 3 | 3.2 | 1 | 1.1 |
| 12 | - | - | - | - |
| 13 | 6.9 | 7.1 | 3.1 | 3.3 |
| 14 | 7.4 | 7.6 | 4.9 | 5.1 |

NOTES

1. All dimensions in millimetres.

FIGURE 2(b) – VARIANTS (CONTINUED)

VARIANT 31 – SQUARE FLANGE RECEPTACLE



| Symbol | Millimetres | | Notes |
|--------|-------------|------|---------|
| | Min. | Max. | |
| a | 7.6 NOM. | | |
| b | 9.5 NOM. | | |
| e | 0.18 | 0.41 | |
| Øg | 2.55 | 2.7 | 4 holes |
| i | 9.5 NOM. | | Square |
| j | 5.9 NOM. | | Square |
| m | 1.7 NOM. | | |

| ELECTRICAL CHARACTERISTICS | VALUES | UNITS |
|--|-------------------------|-----------|
| Frequency range | 0 to 18 | GHz |
| Maximum voltage standing wave ratio (VSWR) | $1.05 + 0.03 f$ (GHz) | For B = 0 |
| Maximum reflection coefficient | $0.024 + 0.013 f$ (GHz) | For B = 0 |
| Maximum insertion loss (1) | $0.03 \sqrt{f}$ (GHz) | dB |
| RF leakage (1) | - [95 - f (GHz)] | dB |
| Voltage proof | 750 | Vrms |
| Corona level | Not applicable | Vrms |

NOTES

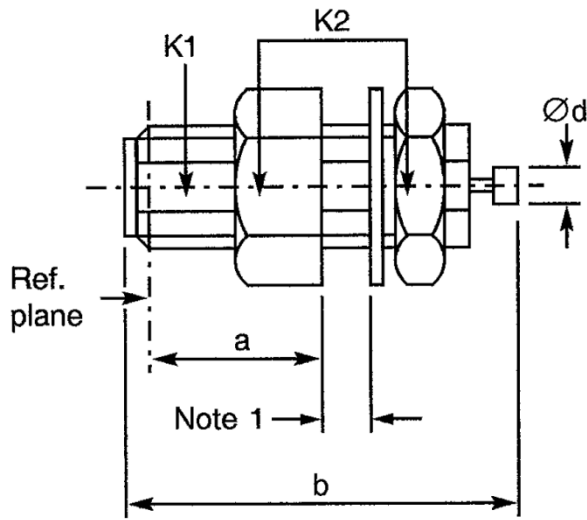
1. For information only.
2. Contact insertion and withdrawal forces shall be measured on the rear contact (see Para. 4.3.8).

| MECHANICAL CHARACTERISTICS | VALUES | UNITS |
|---|----------------|-------|
| Mini centre contact retention force (axial) | 22 | N |
| Mini centre contact retention torque | Not applicable | N.cm |
| Mini cable retention force | Not applicable | N |
| Mini cable retention torque value | Not applicable | N.cm |
| Maximum weight | 1.3 | g |

| OTHER CHARACTERISTICS | VALUES | UNITS |
|--|----------------|-------|
| Rapid change of temperature - peak value | +115 | °C |
| Operating temperature range | -65 to +105 | °C |
| Maxi leakage (panel sealed connectors) | Not applicable | |
| Maxi leakage (hermetic sealed connector) | Not applicable | |
| Solderability | Not applicable | |
| Soldering proof | Not applicable | |
| Cables used | Not applicable | |

FIGURE 2(b) – VARIANTS (CONTINUED)

VARIANT 58 – BULKHEAD RECEPTACLE



| Symbol | Millimetres | | Notes |
|--------|-------------|------|-----------|
| | Min. | Max. | |
| a | 6.1 NOM. | | |
| b | 15.2 NOM. | | |
| Ød | 1.3 NOM. | | |
| K1 | - | - | 2 flats |
| K2 | 6.35 NOM. | | Hex flats |

NOTES

1. Maximum panel thickness: 1.6mm.

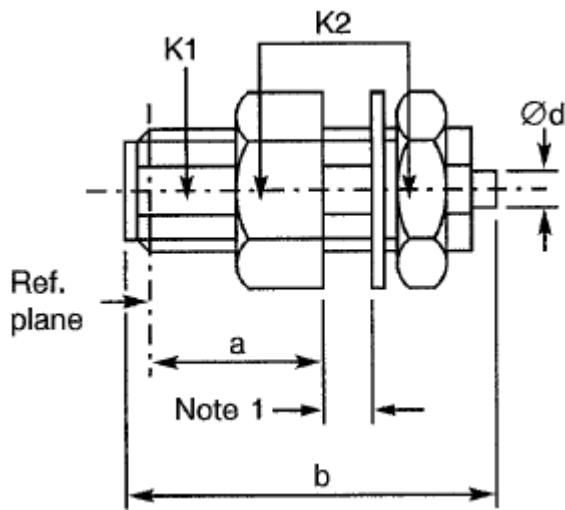
| ELECTRICAL CHARACTERISTICS | VALUES | UNITS |
|--|----------------|-------|
| Frequency range | 0 to 18 | GHz |
| Maximum voltage standing wave ratio (VSWR) | Not applicable | |
| Maximum reflection coefficient | Not applicable | |
| Maximum insertion loss | Not applicable | dB |
| RF leakage | Not applicable | dB |
| Voltage proof | 750 | Vrms |
| Corona level | Not applicable | Vrms |

| MECHANICAL CHARACTERISTICS | VALUES | UNITS |
|---|----------------|-------|
| Mini centre contact retention force (axial) | 22 | N |
| Mini centre contact retention torque | 1.8 | N.cm |
| Mini cable retention force | Not applicable | N |
| Mini cable retention torque value | Not applicable | N.cm |
| Maximum weight | 2 | g |

| OTHER CHARACTERISTICS | VALUES | UNITS |
|--|------------------------|-------|
| Rapid change of temperature - peak value | +115 | °C |
| Operating temperature range | -65 to +105 | °C |
| Maxi leakage (panel sealed connectors) | Not applicable | |
| Maxi leakage (hermetic sealed connector) | Not applicable | |
| Solderability | On centre contact only | |
| Soldering proof | Applicable | |
| Cables used | Not applicable | |

FIGURE 2(b) – VARIANTS (CONTINUED)

VARIANT 59 – BULKHEAD RECEPTACLE FOR SEMI-RIGID CABLE, Ø2.2mm (0.085")



| Symbol | Millimetres | | Notes |
|--------|-------------|------|-----------|
| | Min. | Max. | |
| a | 6.1 NOM. | | |
| b | 15 NOM. | | |
| Ød | 2.25 NOM. | | |
| K1 | - | - | 2 flats |
| K2 | 6.35 NOM. | | Hex flats |

NOTES

1. Maximum panel thickness: 2mm.

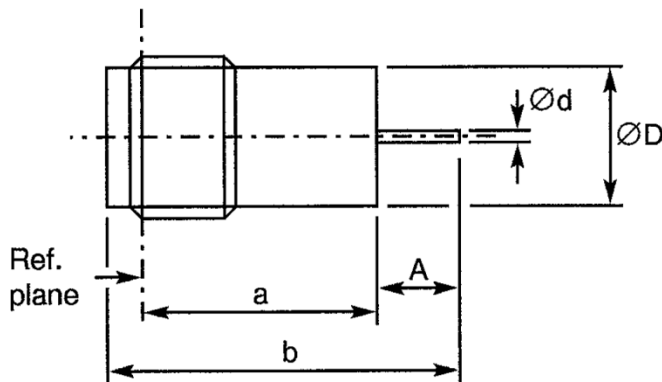
| ELECTRICAL CHARACTERISTICS | VALUES | UNITS |
|--|------------------------|-------|
| Frequency range | 0 to 18 | GHz |
| Maximum voltage standing wave ratio (VSWR) | 1.05 + 0.015 f (GHz) | |
| Maximum reflection coefficient | 0.024 + 0.0063 f (GHz) | |
| Maximum insertion loss | 0.03 √f (GHz) | dB |
| RF leakage | - [100 - f (GHz)] | dB |
| Voltage proof | 750 | Vrms |
| Corona level | 190 | Vrms |

| MECHANICAL CHARACTERISTICS | VALUES | UNITS |
|---|----------------|-------|
| Mini centre contact retention force (axial) | Not applicable | N |
| Mini centre contact retention torque | Not applicable | N.cm |
| Mini cable retention force | 200 | N |
| Mini cable retention torque value | 11.5 | N.cm |
| Maximum weight | 2 | g |

| OTHER CHARACTERISTICS | VALUES | UNITS |
|--|----------------|-------|
| Rapid change of temperature - peak value | +115 | °C |
| Operating temperature range | -55 to +105 | °C |
| Maxi leakage (panel sealed connectors) | Not applicable | |
| Maxi leakage (hermetic sealed connector) | Not applicable | |
| Solderability | Applicable | |
| Soldering proof | Not applicable | |
| Cables used | KS 1, RG 405/U | |

FIGURE 2(b) – VARIANTS (CONTINUED)

VARIANT 60 – HERMETIC RECEPTACLE, SOLDER TYPE



| Symbol | Millimetres | |
|--------|-------------|------|
| | Min. | Max. |
| a | 8.3 NOM. | |
| A | 2.9 NOM. | |
| b | 13.1 NOM. | |
| Ød | 0.4 NOM. | |
| ØD | 3.7 NOM. | |

| ELECTRICAL CHARACTERISTICS | VALUES | UNITS |
|--|-----------------------|-------|
| Frequency range | 0 to 12.4 | GHz |
| Maximum voltage standing wave ratio (VSWR) | 1.1 + 0.05 f (GHz) | |
| Maximum reflection coefficient | 0.047 + 0.023 f (GHz) | |
| Maximum insertion loss | 0.03 √f (GHz) | dB |
| RF leakage | - [95 - f (GHz)] | dB |
| Voltage proof | 750 | Vrms |
| Corona level | Not applicable | Vrms |

NOTES

1. For information only.

| MECHANICAL CHARACTERISTICS | VALUES | UNITS |
|---|----------------|-------|
| Mini centre contact retention force (axial) | Not applicable | N |
| Mini centre contact retention torque | Not applicable | N.cm |
| Mini cable retention force | Not applicable | N |
| Mini cable retention torque value | Not applicable | N.cm |
| Maximum weight | 1 | g |

| OTHER CHARACTERISTICS | VALUES | UNITS |
|--|----------------|-------|
| Rapid change of temperature - peak value | +125 | °C |
| Operating temperature range | -40 to +100 | °C |
| Maxi leakage (panel sealed connectors) | Not applicable | |
| Maxi leakage (hermetic sealed connector) | Applicable | |
| Solderability | Not applicable | |
| Soldering proof | Applicable | |
| Cables used | Not applicable | |