



**CAPACITOR FILTERS, PI-TYPE, FEEDTHROUGH,
ELECTROMAGNETIC INTERFERENCE
SUPPRESSION, NON-HERMETICALLY SEALED**

BASED ON TYPE SFP040

ESCC Detail Specification No. 3008/014

Issue 4	June 2019
---------	-----------



LEGAL DISCLAIMER AND COPYRIGHT

European Space Agency, Copyright © 2019, All rights reserved.

The European Space Agency disclaims any liability or responsibility, to any person or entity, with respect to any loss or damage caused, or alleged to be caused, directly or indirectly by the use and application of this ESCC publication.

This publication, without prior permission of the European Space Agency and provided it is not used for a commercial purpose, may be:

- copied in whole, in any medium, without alteration or modification.
- copied in part, in any medium, provided that the ESCC document identification, comprising the ESCC symbol, document number and document issue, is removed.

DOCUMENTATION CHANGE NOTICE

(Refer to <https://escies.org> for ESCC DCR content)

DCR No.	CHANGE DESCRIPTION
1263	Specification upissued to incorporate changes per DCR.

TABLE OF CONTENTS

1	GENERAL	6
1.1	SCOPE	6
1.2	COMPONENT TYPE VARIANTS	6
1.3	MAXIMUM RATINGS	6
1.4	PARAMETER DERATING INFORMATION	6
1.5	PHYSICAL DIMENSIONS	6
1.6	FUNCTIONAL DIAGRAM	6
2	APPLICABLE DOCUMENTS	6
3	TERMS, DEFINITIONS, ABBREVIATIONS, SYMBOLS AND UNITS	6
4	REQUIREMENTS	10
4.1	GENERAL	10
4.2	DEVIATIONS FROM GENERIC SPECIFICATION	10
4.2.1	Deviations from Special In-process Controls	10
4.2.2	Deviations from Final Production Tests - Chart II	10
4.2.3	Deviations from Burn-in Tests - Chart III	10
4.2.4	Deviations from Qualification Tests - Chart IV	10
4.2.5	Deviations from Lot Acceptance Tests - Chart V	10
4.3	MECHANICAL AND ENVIRONMENTAL REQUIREMENTS	11
4.3.1	Dimension Check	11
4.3.2	Weight	11
4.3.3	Robustness of Terminations	11
4.4	MATERIALS AND FINISHES	11
4.4.1	Case	11
4.4.2	Lead Material and Finish	11
4.4.3	Accessories	11
4.5	MARKING	11
4.5.1	General	11
4.5.2	Lead Identification	11
4.5.3	The ESCC Component Number	12
4.5.4	Traceability Information	12
4.5.5	Marking of Small Components	12
4.6	ELECTRICAL MEASUREMENTS	12
4.6.1	Electrical Measurements at Room Temperature	12
4.6.2	Electrical Measurements at High and Low Temperatures	12
4.6.3	Circuits for Electrical Measurements (Figure 4)	12
4.7	BURN-IN TESTS	12



4.7.1	Parameter Drift Values	12
4.7.2	Conditions for Burn-in	12
4.7.3	Electrical Circuit for Burn-in (Figure 5)	12
4.8	ENVIRONMENTAL AND ENDURANCE TESTS (CHART IV AND V OF ESCC GENERIC SPECIFICATION NO. 3008)	15
4.8.1	Measurements and Inspections on Completion of Environmental Tests	15
4.8.2	Measurements and Inspections at Intermediate Points during Endurance Tests	15
4.8.3	Measurements and Inspections on Completion of Endurance Tests	15
4.8.4	Conditions for Operating Life Tests (Part of Endurance Testing)	15
4.8.5	Electrical Circuit for Operating Life Tests (Figure 5)	15

1 GENERAL

1.1 SCOPE

This specification details the ratings, physical and electrical characteristics, test and inspection data for a Capacitor Filter, Pi-Type, Feedthrough, Electromagnetic Interference Suppression, Non-Hermetically Sealed, based on Type SFP040. It shall be read in conjunction with ESCC Generic Specification No. [3008](#), the requirements of which are supplemented herein.

1.2 COMPONENT TYPE VARIANTS

Variants of the basic type components specified herein, which are also covered by this specification, are given in Table 1(a).

1.3 MAXIMUM RATINGS

The maximum ratings, which shall not be exceeded at any time during use or storage, applicable to the components specified herein, are scheduled in Table 1(b).

1.4 PARAMETER DERATING INFORMATION

The parameter derating information applicable to the components specified herein, is shown in Figure 1.

1.5 PHYSICAL DIMENSIONS

The physical dimensions of the components specified herein, are shown in Figure 2.

1.6 FUNCTIONAL DIAGRAM

The functional diagram, showing lead identification, of the components specified herein, is shown in Figure 3.

2 APPLICABLE DOCUMENTS

The following documents form part of this specification and shall be read in conjunction with it:

- (a) ESCC No. [3008](#), Generic Specification for Capacitors and Capacitor Filters, Feedthrough.
- (b) [MIL-STD-202](#), Test Methods for Electronic and Electrical Component Parts.

3 TERMS, DEFINITIONS, ABBREVIATIONS, SYMBOLS AND UNITS

For the purpose of this specification, the terms, definitions, abbreviations, symbols and units specified in ESCC Basic Specification No. [21300](#) shall apply.

TABLE 1(a) – TYPE VARIANTS

Variants	Rated Voltage U_R (V) (Note 2)	Insulation Resistance R_i (GΩ)		DC Resistance R_s (mΩ)	Voltage Drop V_{dr} (V)	Voltage Proof V_P (V)	Case Size (Note 1)	Weight (g)	Capacitance C (pF)
		-55 / +25°C	+125°C						
01, 11, 21, 31	200	10	1	15	0.15	500	1	2.7	2400
02, 12, 22, 32	200	10	1	5	0.05	500	2	2	2400
03, 13, 23, 33	250	10	1	4	0.04	625	2	2	750
04, 14, 24, 34	100	3	0.3	15	0.15	250	3	3.5	44800
05, 15, 25, 35	200	10	1	15	0.15	500	1	2.7	1600
06, 16, 26, 36	200	10	1	10	0.1	500	1	2.7	4320
07, 17, 27, 37	200	10	1	10	0.1	500	4	2	2400
08, 18, 28, 38	250	10	1	10	0.1	625	4	2	750
09, 19, 29, 39	200	10	1	15	0.15	500	1	2.7	750
10, 20, 30, 40	200	10	1	15	0.15	500	1	2.7	160

Variants	Insertion Loss I_L (dB) With No Load / Rated Current Applied				
	10MHz	50MHz	100MHz	500MHz	1.0GHz
01, 11, 21, 31	10 / 10	36 / 20	47 / 25	70 / 70	75 / 75
02, 12, 22, 32	5.0 / 5.0	30 / 25	40 / 30	54 / 54	60 / 60
03, 13, 23, 33	-		15 / 15	50 / 50	55 / 55
04, 14, 24, 34	39 / 30	54 / 50	75 / 75	75 / 75	75 / 75
05, 15, 25, 35	10 / 5.0	38 / 20	50 / 25	75 / 70	75 / 75
06, 16, 26, 36	13 / 10	45 / 22	60 / 30	75 / 70	75 / 75
07, 17, 27, 37	5.0 / 5.0	30 / 25	40 / 30	60 / 55	60 / 60
08, 18, 28, 38	-	-	15 / 15	50 / 45	55 / 55
09, 19, 29, 39	-	-	15 / 15	50 / 45	55 / 55
10, 20, 30, 40	-	-	4.0 / 4.0	40 / 35	54 / 54

Variants	Case Thread $\varnothing E$	Input Terminal
01 to 10	M4 x 0.70	Straight
11 to 20	M4 x 0.70	Button
21 to 30	8.32 UNC	Straight
31 to 40	8.32 UNC	Button

NOTES:

1. See Figure 2.
2. See Figure 1.

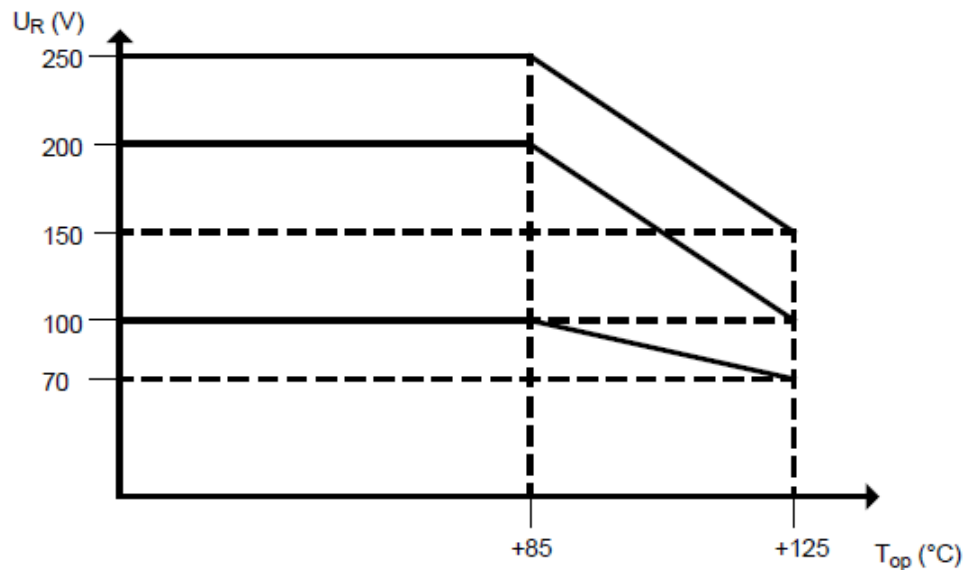
TABLE 1(b) – MAXIMUM RATINGS

No.	Characteristics	Symbol	Limit Ratings	Unit	Remarks
1	Rated DC Voltage	U_R	See Table 1(a)	V	Note 1
2	Torque	T_{qe}	0.4	Nm	
3	Voltage Drop (DC)	V_{dr}	See Table 1(a)	V	
4	DC and Low Frequency Current	I_{LF}	10	A	
5	Operating Temperature Range	T_{op}	-55 to +125	°C	T_{amb}
6	Storage Temperature Range	T_{stg}	-55 to +125	°C	
7	Soldering Temperature	T_{sol}	+260	°C	Note 2

NOTES:

1. At $T_{amb} \leq +85^\circ\text{C}$. For derating at $T_{amb} > 85^\circ\text{C}$, see Figure 1.
2. Duration 10 seconds maximum at a distance of not less than 2mm from the body and the same lead shall not be resoldered until 3 minutes have elapsed.

FIGURE 1 - PARAMETER DERATING INFORMATION



Rated Voltage versus Temperature

FIGURE 2 – PHYSICAL DIMENSIONS

FIGURE 2(a) - STRAIGHT INPUT TERMINAL

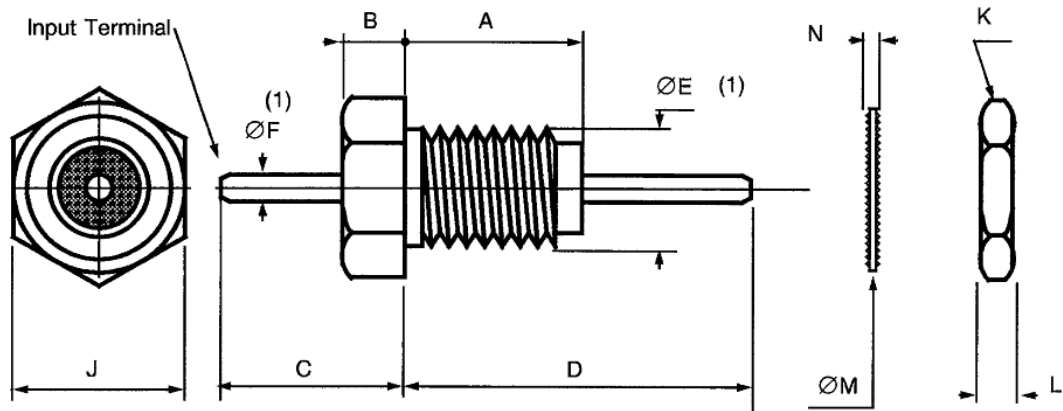
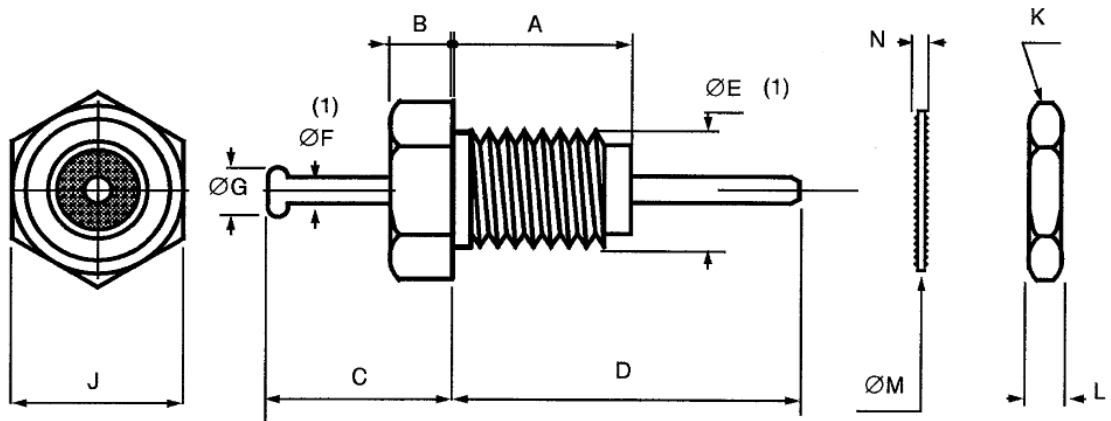


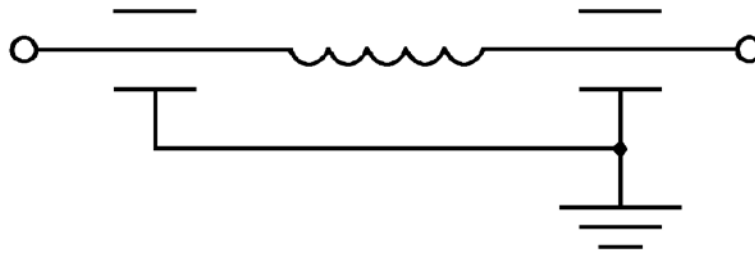
FIGURE 2(b) - BUTTON INPUT TERMINAL



Symbol	Case Size (mm)							
	1		2		3		4	
	Min	Max	Min	Max	Min	Max	Min	Max
A	6.9	7.1	3.4	3.6	7.8	8.4	3.4	3.6
B	2.4	2.6	1.5	1.7	3.5	4.1	1.5	1.7
C	7	12	3.5	4.5	8	9	8	13
D	17	19	5.5	6.5	13	14	8	13
$\varnothing E$	See Table 1(a)		See Table 1(a)		See Table 1(a)		See Table 1(a)	
$\varnothing F$	0.72	0.88	0.72	0.88	0.72	0.88	0.72	0.88
$\varnothing G$	1	1.4	1	1.4	1	1.4	1	1.4
J	-	5	-	5	-	5	-	5
K	-	6	-	6	-	6	-	6
L	-	2.5	-	1.6	-	2.5	-	1.6
$\varnothing M$	-	6.5	-	6.5	-	6.5	-	6.5
N (2)	-	0.7	-	0.7	-	0.7	-	0.7

NOTES:

1. Lead finish shall commence not more than 1.5mm from encapsulant.
2. The washer is an external fan lock washer.

FIGURE 3 - FUNCTIONAL DIAGRAM

4 REQUIREMENTS

4.1 GENERAL

The complete requirements for procurement of the components specified herein are stated in this specification and ESCC Generic Specification No. 3008 for Capacitors and Capacitor Filters Feedthrough. Deviations from the Generic Specification, applicable to this Detail specification only, are detailed in Para. 4.2.

Deviations from the applicable Generic Specification and this Detail Specification, formally agreed with specific Manufacturers on the basis that the alternative requirements are equivalent to the ESCC requirements and do not affect the components' reliability, are listed in the appendices attached to this specification.

4.2 DEVIATIONS FROM GENERIC SPECIFICATION

4.2.1 Deviations from Special In-process Controls

None.

4.2.2 Deviations from Final Production Tests - Chart II

- (a) Para. 9.4.1.5, Voltage Drop: Shall be performed as a DC resistance measurement in accordance with [MIL-STD-202, Method 303](#).

4.2.3 Deviations from Burn-in Tests - Chart III

- (a) Para. 9.4.1.5, Voltage Drop: Shall be performed as a DC resistance measurement in accordance with [MIL-STD-202, Method 303](#).
- (b) Para. 9.7, External Visual Inspection: For silver plated case, a change of shade is acceptable.

4.2.4 Deviations from Qualification Tests - Chart IV

- (a) Para. 9.4.1.5, Voltage Drop: Shall be performed as a DC resistance measurement in accordance with [MIL-STD-202, Method 303](#).
- (b) Para. 9.12, Moisture Resistance: Not applicable.
- (c) Para. 9.15, Immersion: Not applicable.

4.2.5 Deviations from Lot Acceptance Tests - Chart V

- (a) Para. 9.4.1.5, Voltage Drop: Shall be performed as a DC resistance measurement in accordance with [MIL-STD-202, Method 303](#).
- (b) Para. 9.15, Immersion: Not applicable.

4.3 MECHANICAL AND ENVIRONMENTAL REQUIREMENTS

4.3.1 Dimension Check

The dimensions of the components specified herein shall be verified in accordance with the requirements set out in Para. 9.5 of ESCC Generic Specification No. 3008 and they shall conform to those shown in Figure 2 of this specification.

4.3.2 Weight

The maximum weight of the components specified herein shall be as given in Table 1(a).

4.3.3 Robustness of Terminations

The requirements for the robustness of terminations tests are specified in Section 9 of ESCC Generic Specification No. 3008. The leads are defined as 'RIGID'.

- Test Ua1 shall be conducted with a maximum force of 10N.
- Tests Ub and Uc: Not applicable.

4.4 MATERIALS AND FINISHES

The materials and finishes shall be as specified herein. Where a definite material is not specified, a material which will enable the components specified herein to meet the performance requirements of this specification shall be used. Acceptance or approval of any constituent material does not guarantee acceptance of the finished product.

4.4.1 Case

The case shall be silver plated brass with potting encapsulant sealing the filter element.

4.4.2 Lead Material and Finish

The lead material shall be Type 'B' with Type '10' finish in accordance with the requirements of ESCC Basic Specification No. 23500.

4.4.3 Accessories

Nut: As per Figure 2, brass, silver plated.

Lock-Washer: As per Figure 2, bronze, silver plated.

4.5 MARKING

4.5.1 General

The marking of all components delivered to this specification shall be in accordance with the requirements of ESCC Basic Specification No. 21700.

Each component shall be marked in respect of:

- (a) Lead Identification.
- (b) The ESCC Component Number.
- (c) Traceability Information.

4.5.2 Lead Identification

Not applicable.

4.5.3 The ESCC Component Number

Each component shall bear the ESCC Component Number which shall be constituted and marked as follows:

Example: 300801402B

- Detail Specification Number: 3008014
- Type Variant (see Table 1(a)): 02
- Testing level (B or C, as applicable): B

4.5.4 Traceability Information

Each component shall be marked in respect of traceability information in accordance with the requirements of ESCC Basic Specification No. [21700](#).

4.5.5 Marking of Small Components

When it is considered that the component is too small to accommodate the marking as specified above, as much as space permits shall be marked. The order of precedence shall be as follows:

- (a) The ESCC Component Number.
- (b) Traceability Information.

The marking information in full shall accompany each component in its primary package.

4.6 ELECTRICAL MEASUREMENTS

4.6.1 Electrical Measurements at Room Temperature

The parameters to be measured at room temperature are scheduled in Table 2. Unless otherwise specified, measurements shall be performed at $T_{amb} = +22 \pm 3^{\circ}\text{C}$.

4.6.2 Electrical Measurements at High and Low Temperatures

The parameters to be measured at high and low temperatures are scheduled in Table 3. Measurements shall be performed at $T_{amb} = +125 (+0 -5)^{\circ}\text{C}$ and $-55 (+5 -0)^{\circ}\text{C}$ respectively.

4.6.3 Circuits for Electrical Measurements (Figure 4)

Not applicable.

4.7 BURN-IN TESTS

4.7.1 Parameter Drift Values

The parameter drift values applicable to burn-in are specified in Table 4 of this specification. Measurements shall be performed at $T_{amb} = +22 \pm 3^{\circ}\text{C}$. The parameter drift values (Δ) applicable to the parameters scheduled shall not be exceeded. In addition to these drift value requirements for a given parameter, the appropriate limit values specified in Table 2 shall not be exceeded.

4.7.2 Conditions for Burn-in

The requirements for burn-in are specified in Section 7 of ESCC Generic Specification No. [3008](#). The conditions for burn-in shall be as specified in Table 5 of this specification.

4.7.3 Electrical Circuit for Burn-in (Figure 5)

Not applicable.

TABLE 2(a) – ELECTRICAL MEASUREMENTS AT ROOM TEMPERATURE – DC PARAMETERS

No.	Characteristics	Symbol	ESCC 3008 Test Method	Test Conditions	Limits		Unit
					Min	Max	
1	DC Resistance	R _s	MIL-STD-202, Method 303	-	-	(1)	mΩ
2	Voltage Proof	V _P	Para. 9.4.1.2	2.5U _R	-	(1)	V
3	Insulation Resistance	R _i	Para. 9.4.1.3	Para. 9.4.1.3	(1)	-	GΩ

NOTES:

1. See Table 1(a).

TABLE 2(b) – ELECTRICAL MEASUREMENTS AT ROOM TEMPERATURE – AC PARAMETERS

No.	Characteristics	Symbol	ESCC 3008 Test Method	Test Conditions	Limits		Unit
					Min	Max	
4	Insertion Loss	I _{L1}	Para. 9.4.1.4	f = 10MHz (1)	(3)	-	dB
5	Insertion Loss	I _{L2}	Para. 9.4.1.4	f = 50MHz (2)	(3)	-	dB
6	Insertion Loss	I _{L3}	Para. 9.4.1.4	f = 100MHz (2)	(3)	-	dB
7	Insertion Loss	I _{L4}	Para. 9.4.1.4	f = 500MHz (1)	(3)	-	dB
8	Insertion Loss	I _{L5}	Para. 9.4.1.4	f = 1.0GHz (2)	(3)	-	dB
9	Capacitance	C	Para. 9.4.1.1	f = 1000 ±100Hz V = 0.1 to 1.2Vrms	(3)	-	pF

NOTES:

1. Measurements at this frequency to be made only during Chart IV testing.
2. Measurements at rated current to be made only during Chart IV testing in Subgroups II or III. Measurements without load current to be made during Charts II, III and V.
3. See Table 1(a)

TABLE 3 - ELECTRICAL MEASUREMENTS AT HIGH AND LOW TEMPERATURES

No.	Characteristics	Symbol	ESCC 3008 Test Method	Test Conditions (Note 1)	Limits		Unit
					Min	Max	
3	Insulation Resistance	R_i	Para. 9.4.1.3	Para. 9.4.1.3 $T_{amb} = +125 (+0 -5)^{\circ}C$ (4)	(3)	-	$G\Omega$
5	Insertion Loss	I_{L2}	Para. 9.4.1.4	$f = 50MHz$ No Current	(2)	-	dB
6	Insertion Loss	I_{L3}	Para. 9.4.1.4	$f = 100MHz$ No Current	(2)	-	dB
8	Insertion Loss	I_{L5}	Para. 9.4.1.4	$f = 1.0GHz$ No Current	(2)	-	dB

NOTES:

1. If more than 20 units have to be measured, the measurement shall be performed on a sample basis in accordance with Inspection Level II, Table IIA, AQL = 1.0 of IEC Publication No. 410.
2. Insertion Loss values, see Table 1(a).
3. Insulation resistance values, see Table 1(a).
4. Insulation resistance is to be performed only at high temperature.

FIGURE 4 – CIRCUITS FOR ELECTRICAL MEASUREMENTS

Not applicable.

TABLE 4 – PARAMETER DRIFT VALUES

No.	Characteristics	Symbol	Spec. and/or Test Method	Test Conditions	Change Limits (Δ)	Unit
9	Capacitance Change	$\Delta C/C$	As per Table 2	As per Table 2	± 10	%

TABLE 5(a) – CONDITIONS FOR BURN-IN TESTS

No.	Characteristic	Symbol	Condition	Unit
1	Ambient Temperature	T_{amb}	+125 (+0 -3)	$^{\circ}C$
2	Voltage	V	$2xU_R$ at +125 $^{\circ}C$ (1)	V

NOTES:

1. Applied between terminal and case.
The polarity of the voltage shall be positive on the case during the first 24 to 72 hours and then reversed to negative on the case for the remaining portion of the test. See Table 1(a).

TABLE 5(b) – CONDITIONS FOR OPERATING LIFE TESTS

No.	Characteristic	Symbol	Condition	Unit
1	Ambient Temperature	T _{amb}	+125 (+0 -3)	°C
2	Voltage	V	2xU _R at +125°C (1)	V
3	Current	I _{LF}	10 (2)	A

NOTES

1. Applied between terminal and case.
The polarity of the voltage shall be positive on the case during the first 24 to 72 hours and then reversed to negative on the case for the remaining portion of the test. See Table 1(a).
2. To flow between the terminals.

FIGURE 5 – ELECTRICAL CIRCUIT FOR BURN-IN AND OPERATING LIFE TESTS

Not applicable.

4.8 ENVIRONMENTAL AND ENDURANCE TESTS (CHART IV AND V OF ESCC GENERIC SPECIFICATION NO. 3008)

4.8.1 Measurements and Inspections on Completion of Environmental Tests

The parameters to be measured and inspections to be performed on completion of environmental tests are scheduled in Table 6. Unless otherwise specified, the measurements shall be performed at T_{amb} = +22 ±3°C.

4.8.2 Measurements and Inspections at Intermediate Points during Endurance Tests

The parameters to be measured and inspections to be performed at intermediate points during endurance tests are scheduled in Table 6. Unless otherwise specified, the measurements shall be performed at T_{amb} = +22 ±3°C.

4.8.3 Measurements and Inspections on Completion of Endurance Tests

The parameters to be measured and inspections to be performed on completion of endurance testing are scheduled in Table 6. Unless otherwise specified, the measurements shall be performed at T_{amb} = +22 ±3°C.

4.8.4 Conditions for Operating Life Tests (Part of Endurance Testing)

The requirements for operating life test are specified in Section 9 of ESCC Generic Specification No. 3008. The conditions for operating life testing shall be as specified in Table 5 of this specification.

4.8.5 Electrical Circuit for Operating Life Tests (Figure 5)

Not applicable.

TABLE 6 – MEASUREMENTS AND INSPECTIONS ON COMPLETION OF ENVIRONMENTAL TESTS AND AT INTERMEDIATE POINTS AND ON COMPLETION OF ENDURANCE TESTING

No.	ESCC Generic Spec. No. 3008		Measurements and Inspections		Symbol	Limits		Unit
	Environmental and Endurance Tests (1)	Test Method and Conditions	Identification	Conditions		Min	Max	
1	External Visual Inspection	Para. 9.7	Visual Inspection	-	-	-	-	
2	Temperature Rise	Para. 9.9	Temperature Rise	-	-	-	25	°C
3	Shock	Para. 9.10 100% U _R	During Tests	Open or Short Circuits	-	-	-	
			Visual Examination	Mechanical Damage	-	-	-	
			Insertion Loss	Table 2 Items 4 to 8	I _L	Table 2	-	
4	Vibration	Para. 9.11 100% U _R	During Last Cycle	Open or Short Circuits	-	-	-	
			Visual Examination	Mechanical Damage	-	-	-	
			Insertion Loss	Table 2 Items 4 to 8	I _L	Table 2	-	
5	Accelerated Damp Heat					Not applicable		
6	Low Air Pressure	Para. 9.13	During last 5 minutes	Voltage Proof	V _P	125% U _R	-	
			During and after test	Visual Examination	-	-	-	
7	Robustness of Terminations	Para. 9.14 and Para. 4.3.3. of this spec	Visual Examination	-	-	-	-	
			DC Resistance	Table 2 Item 1	R _s	-	Table 2	
8	Immersion					Not applicable		
9	Overload	Para. 9.16 1.4I _{LF} for 15 minutes	DC Resistance	Table 2 Item 1	R _s	-	Table 2	
			Insulation Resistance	Table 2 Item 3	R _i	Table 2	-	
			Visual Examination	-	-	-	-	
10	Resistance to Soldering Heat	Para. 9.17	After 1 to 2 hours	Insulation Resistance	R _i	Table 2	-	
			Insertion Loss	Table 2 Items 4 to 8	I _L	Table 2	-	
			Visual Examination	-	-	-	-	
11	Solderability	Para. 9.18	Visual Examination	IEC 68-2-20 Paras. 4.6.4, 4.7.4 or 4.9.3	-	-	-	

No.	ESCC Generic Spec. No. 3008		Measurements and Inspections		Symbol	Limits		Unit	
	Environmental and Endurance Tests (1)	Test Method and Conditions	Identification	Conditions		Min	Max		
12	Operating Life	Para. 9.19	During Tests	Open or Short Circuit	-	-	-		
			Initial Measurements						
			DC Resistance	Table 2 Item 1	R _s	-	Table 2		
			Voltage Proof	Table 2 Item 2	V _P	90% U _R	-		
			Insulation Resistance	Table 2 Item 3	R _i	Table 2	-		
			Insertion Loss	Table 2 Items 4 to 8	I _L	Table 2	-		
			Capacitance	Table 2 Item 9	C	Table 2	-		
			Intermediate Measurements						
			Insulation Resistance	Table 3 Item 3 (2)	R _i	Table 3	-		
			After 24 hours recovery						
			DC Resistance	Table 2 Item 1	R _s	-	Table 2		
			Voltage Proof	Table 2 Item 2	V _P	90% U _R	-		
			Insulation Resistance	Table 2 Item 3	R _i	Note 3	-		
			Insertion Loss	Table 2 Items 4 to 8	I _L	Table 2	-		
			Capacitance	Table 2 Item 9	C	Table 2	-		
			Final Measurements						
			Insulation Resistance	Table 3 Item 3 (2)	R _i	Note 3	-		
			After 24 hours recovery						
			DC Resistance	Table 2 Item 1	R _s	-	Table 2		
Voltage Proof	Table 2 Item 2	V _P	90% U _R	-					
Insulation Resistance	Table 2 Item 3	R _i	Note 3	-					
Insertion Loss	Table 2 Items 4 to 8	I _L	Table 2	-					
Capacitance	Table 2 Item 9	C	Table 2	-					
13	Corrosion	Para. 9.20 96 Hours	Visual Examination	-	-	-	-		
14	Permanence of Marking	Para. 9.21	Visual Examination	No corrosion or obliteration of marking	-	-	-		
15	Damp Heat	Para. 9.24 For 168 Hours	After 4 hours						
			Visual Examination	-	-	-	-		
			Insulation Resistance	Table 2 Item 3	R _i	Note 4	-		

NOTES:

1. These tests refer to either Chart IV or V and shall be used as applicable.
2. For measurements at elevated temperature, the requirements of Table 3 shall apply
3. The insulation resistance shall be greater than 50% of the value given in Table 1(a).
4. The insulation resistance shall be greater than 10% of the value given in Table 1(a).