



Page 1 of 13

DIODES, MICROWAVE, SILICON, PIN

BASED ON TYPES BXY43C AND BXY44K

ESCC Detail Specification No. 5513/030

Issue 6	February 2020
---------	---------------



Document Custodian: European Space Agency – see <https://escies.org>

LEGAL DISCLAIMER AND COPYRIGHT

European Space Agency, Copyright © 2020. All rights reserved.

The European Space Agency disclaims any liability or responsibility, to any person or entity, with respect to any loss or damage caused, or alleged to be caused, directly or indirectly by the use and application of this ESCC publication.

This publication, without the prior permission of the European Space Agency and provided that it is not used for a commercial purpose, may be:

- copied in whole, in any medium, without alteration or modification.
- copied in part, in any medium, provided that the ESCC document identification, comprising the ESCC symbol, document number and document issue, is removed.

DOCUMENTATION CHANGE NOTICE

(Refer to <https://escies.org> for ESCC DCR content)

DCR No.	CHANGE DESCRIPTION
1299	Specification upissued to incorporate changes per DCR.

TABLE OF CONTENTS

1	GENERAL	5
1.1	SCOPE	5
1.2	APPLICABLE DOCUMENTS	5
1.3	TERMS, DEFINITIONS, ABBREVIATIONS, SYMBOLS AND UNITS	5
1.4	THE ESCC COMPONENT NUMBER AND COMPONENT TYPE VARIANTS	5
1.4.1	The ESCC Component Number	5
1.4.2	Component Type Variants	5
1.5	MAXIMUM RATINGS	6
1.6	HANDLING PRECAUTIONS	6
1.7	PHYSICAL DIMENSIONS AND TERMINAL IDENTIFICATION	7
1.7.1	Case Type T	7
1.7.2	Case Type T1	8
1.8	FUNCTIONAL DIAGRAM	8
1.9	MATERIALS AND FINISHES	8
2	REQUIREMENTS	9
2.1	GENERAL	9
2.1.1	Deviations from the Generic Specification	9
2.1.1.1	Deviations from Screening Tests - Chart F3	9
2.1.1.2	Deviations from Qualification and Periodic Tests - Chart F4	9
2.2	MARKING	9
2.3	DIE SHEAR	9
2.4	TERMINAL STRENGTH	9
2.5	ELECTRICAL MEASUREMENTS AT ROOM, HIGH AND LOW TEMPERATURES	10
2.5.1	Room Temperature Electrical Measurements	10
2.5.2	High and Low Temperatures Electrical Measurements	11
2.6	PARAMETER DRIFT VALUES	11
2.7	INTERMEDIATE AND END-POINT ELECTRICAL MEASUREMENTS	12
2.8	BURN-IN 1 CONDITIONS	12
2.9	BURN-IN 2 CONDITIONS	12
2.10	OPERATING LIFE CONDITIONS	12
	APPENDIX A	13

1 GENERAL

1.1 SCOPE

This specification details the ratings, physical and electrical characteristics and test and inspection data for the component type variants and/or the range of components specified below. It supplements the requirements of, and shall be read in conjunction with, the ESCC Generic Specification listed under Applicable Documents.

1.2 APPLICABLE DOCUMENTS

The following documents form part of this specification and shall be read in conjunction with it:

- (a) ESCC Generic Specification No. [5010](#)
- (b) [MIL-STD-750](#), Test Methods and Procedures for Semiconductor Devices

1.3 TERMS, DEFINITIONS, ABBREVIATIONS, SYMBOLS AND UNITS

For the purpose of this specification, the terms, definitions, abbreviations, symbols and units specified in ESCC Basic Specification No. [21300](#) shall apply.

1.4 THE ESCC COMPONENT NUMBER AND COMPONENT TYPE VARIANTS

1.4.1 The ESCC Component Number

The ESCC Component Number shall be constituted as follows:

Example: 551303001

- Detail Specification Reference: 5513030
- Component Type Variant Number: 01 (as required)

1.4.2 Component Type Variants

The component type variants applicable to this specification are as follows:

Variant Number	Based on Type	Case	Terminal Material and Finish		Weight max g
			Cathode	Anode	
01	BXY43C	T	D2	E2	0.02
02	BXY43C	T1	E2	E2	0.02
05	BXY44K	T	D2	E2	0.02
06	BXY44K	T1	E2	E2	0.02

The terminal material and finish shall be in accordance with the requirements of ESCC Basic Specification No. [23500](#).

1.5 MAXIMUM RATINGS

The maximum ratings shall not be exceeded at any time during use or storage.

Maximum ratings shall only be exceeded during testing to the extent specified in this specification and when stipulated in Test Methods and Procedures of the ESCC Generic Specification.

Characteristics	Symbols	Maximum Ratings	Units	Remarks
DC Reverse Voltage Variants 01, 02 Variants 05, 06	V_R	-150 -200	V	
Forward Current (Continuous)	I_F	400	mA	
Power Dissipation Variant 01 Variant 02 Variant 05 Variant 06	P_D	500 500 500 500	mW	$T_{case} \leq +100^\circ C$ $T_{case} \leq +88^\circ C$ $T_{case} \leq +95^\circ C$ $T_{case} \leq +80^\circ C$ Note 1
Operating Temperature Range	T_{op}	-55 to +150	$^\circ C$	T_{case}
Storage Temperature Range	T_{stg}	-65 to +175	$^\circ C$	
Soldering Temperature	T_{sol}	+235	$^\circ C$	Note 2
Junction Temperature	T_j	+150	$^\circ C$	
Thermal Resistance, Junction-to-Case Variant 01 Variant 02 Variant 05 Variant 06	$R_{th(j-c)}$	100 125 110 140	$^\circ C/W$	

NOTES:

- For T_{case} greater than specified, derate linearly to 0W at $T_{case} = +150^\circ C$.
- Duration 5 seconds maximum and the same termination shall not be resoldered until 5 minutes have elapsed.

1.6 HANDLING PRECAUTIONS

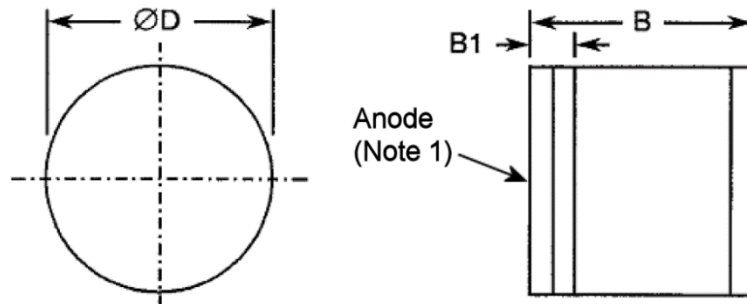
These devices are susceptible to damage by electrostatic discharge. Therefore suitable precautions shall be employed for protection during all phases of manufacture test, packaging, shipping and handling.

These components are categorised as follows:

- Variants 01 and 02 are Class 1 per ESCC Basic Specification No. [23800](#) with a Minimum Critical Path Failure Voltage of 550V.
- Variants 05 and 06 are Class 2 per ESCC Basic Specification No. [23800](#) with a Minimum Critical Path Failure Voltage of 1.2kV.

1.7 PHYSICAL DIMENSIONS AND TERMINAL IDENTIFICATION

1.7.1 Case Type T

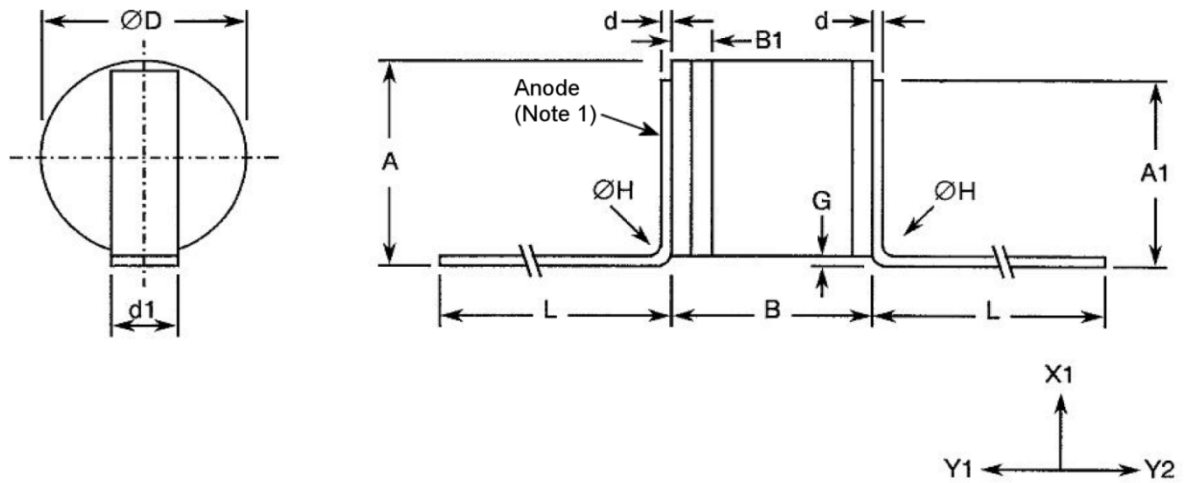


Symbols	Dimensions mm		Notes
	Min	Max	
B	1.15	1.35	
B1	-	0.4	1
ØD	1.3	1.45	

NOTES:

1. The anode terminal is identified by the sealing ring and lid (dimension B1).

1.7.2 Case Type T1



Symbols	Dimensions mm		Notes
	Min	Max	
A	1.4	1.95	
A1	1.05	1.25	
B	1.15	1.35	
B1	-	0.4	1
d	0.06	0.1	
d1	0.4	0.6	
ØD	1.3	1.45	
G	0.1	0.5	
ØH	-	0.3	
L	5.5	-	

NOTES:

1. The anode terminal is identified by the sealing ring and lid (dimension B1).

1.8 FUNCTIONAL DIAGRAM



1. Anode
2. Cathode

1.9 MATERIALS AND FINISHES

Materials and finishes shall be as follows:

- (a) Case
The case shall be hermetically sealed, have a ceramic body and a metal sealing ring and lid.
- (b) Terminals
As specified in Para. 1.4.2 Component Type Variants.

2 REQUIREMENTS

2.1 GENERAL

The complete requirements for procurement of the components specified herein are as stated in this specification and the ESCC Generic Specification. Permitted deviations from the Generic Specification, applicable to this specification only, are listed below.

Permitted deviations from the Generic Specification and this Detail Specification, formally agreed with specific Manufacturers on the basis that the alternative requirements are equivalent to the ESCC requirement and do not affect the component's reliability, are listed in the appendices attached to this specification.

2.1.1 Deviations from the Generic Specification

2.1.1.1 *Deviations from Screening Tests - Chart F3*

(a) Radiographic Inspection: shall be performed in the X and Z axes only.

2.1.1.2 *Deviations from Qualification and Periodic Tests - Chart F4*

(a) Mechanical Shock: Not applicable.

(b) Vibration: Not applicable.

(c) Constant Acceleration: Not applicable.

2.2 MARKING

The marking shall be in accordance with the requirements of ESCC Basic Specification No. [21700](#). The information to be marked and the order of precedence shall be as follows:

(a) The ESCC qualified components symbol (for ESCC qualified components only).

(b) The ESCC Component Number (see Para. 1.4.1).

(c) Traceability information.

2.3 DIE SHEAR

In those cases where package clearances are such that a die shear test is not practicable, the die shall be pushed away with a suitable tool. The force required to remove the die need not be recorded. The die attachment area shall be inspected and the component shall be considered acceptable if more than 50% of the semiconductor material remains.

2.4 TERMINAL STRENGTH

The test conditions for Terminal Strength, tested as specified in the ESCC Generic Specification, shall be as follows:

- Variants 02, 06: Test Condition A, tension, with a force of 1.5N and a duration of 5s.

2.5 ELECTRICAL MEASUREMENTS AT ROOM, HIGH AND LOW TEMPERATURES

2.5.1 Room Temperature Electrical Measurements

The measurements shall be performed at $T_{amb} = +25 \pm 3^{\circ}\text{C}$.

Characteristics	Symbols	MIL-STD-750 Test Method	Test Conditions	Limits		Units
				Min	Max	
Reverse Current 1	I _{R1}	4016	V _R = -150V Variants 01, 02	-	100	nA
			V _R = -200V Variants 05, 06	-	100	
Reverse Current 2	I _{R2}	4016	V _R = -100V Variants 01, 02	-	10	nA
			Variants 05, 06	-	5	
Forward Voltage	V _F	4011	I _F = 100mA Variants 01, 02	-	1	V
			Variants 05, 06	-	1.05	
Total Capacitance	C _T	4001	V _R = -50V, f = 1MHz Variants 01, 02	-	0.45	pF
			Variants 05, 06	-	0.35	
Forward Resistance 1	r _{f1}	4056	f = 100MHz I _{F1} = 20μA Variants 01, 02	-	70	Ω
			I _{F1} = 10μA Variants 05, 06	800	1300	
Forward Resistance 2	r _{f2}	4056	f = 100MHz I _{F2} = 1mA Variants 01, 02	-	3	Ω
			Variants 05, 06	12	28	
Forward Resistance 3	r _{f3}	4056	f = 100MHz I _{F3} = 10mA Variants 01, 02	-	1.5	Ω
			Variants 05, 06	2	5	
Charge Carrier Lifetime	τ _L	-	I _F = 10mA, I _R = -6mA Note 1			ns
			Variants 01, 02	250	-	
			Variants 05, 06	300	-	

NOTES:

1. Pulsed measurement, duration = 1μs, duty cycle ≤ 33%. The input pulse shall be provided by a suitable pulse generator with tr ≤ 5ns.
τ_L is measured across the 50% I_R points of the output waveform.

2.5.2 High and Low Temperatures Electrical Measurements

The measurements shall be performed only at $T_{amb} = +100 (+0 -5)^{\circ}C$.

Characteristics	Symbols	MIL-STD-750 Test Method	Test Conditions (Note 1)	Limits		Units
				Min	Max	
Reverse Current 2	I_{R2}	4016	$V_R = -100V$	-	250	nA

NOTES:

- Measurements shall be performed on a sample of 5 components. In the event of any failure a 100% inspection shall be performed.

2.6 PARAMETER DRIFT VALUES

Unless otherwise specified, the measurements shall be performed at $T_{amb} = +25 \pm 3^{\circ}C$.

The test methods and test conditions shall be as per the corresponding test defined in Para. 2.5.1 Room Temperature Electrical Measurements.

The drift values (Δ) shall not be exceeded for each characteristic specified. The corresponding absolute limit values for each characteristic shall not be exceeded.

Characteristics	Symbols	Limits			Units
		Drift Value (1) Δ	Absolute		
			Min	Max	
Reverse Current 2 Variants 01, 02 Variants 05, 06	I_{R2}	± 3	- -	10 5	nA
Forward Voltage Variants 01, 02 Variants 05, 06	V_F	± 0.03	- -	1 1.05	V
Forward Resistance 2 Variants 01, 02 Variants 05, 06	r_{f2}	$\pm 15\%$	- 12	3 28	Ω

NOTES:

- $\Delta 1 = \Delta 2$.

2.7 INTERMEDIATE AND END-POINT ELECTRICAL MEASUREMENTS

Unless otherwise specified, the measurements shall be performed at $T_{amb} = +25 \pm 3^{\circ}\text{C}$.

The test methods and test conditions shall be as per the corresponding test defined in Para. 2.5.1 Room Temperature Electrical Measurements.

The limit values for each characteristic shall not be exceeded.

Characteristics	Symbols	Limits		Units
		Min	Max	
Reverse Current 1	I_{R1}	-	100	nA
Reverse Current 2 Variants 01, 02 Variants 05, 06	I_{R2}	-	10 5	nA
Forward Voltage Variants 01, 02 Variants 05, 06	V_F	-	1 1.05	V

2.8 BURN-IN 1 CONDITIONS

Characteristics	Symbols	Test Conditions	Units
Ambient Temperature	T_{amb}	+150 (+0 -5)	$^{\circ}\text{C}$
Reverse Voltage Variants 01, 02 Variants 05, 06	V_R	-120 -160 Note 1	V

NOTES:

- After the burn-in period, the components shall be allowed to cool until $T_{amb} = +25 \pm 3^{\circ}\text{C}$; the V_R bias shall be maintained until $T_{amb} < +35^{\circ}\text{C}$.

2.9 BURN-IN 2 CONDITIONS

Characteristics	Symbols	Test Conditions (Note 1)	Units
Junction Temperature	T_j	+150 (+0 -5)	$^{\circ}\text{C}$
Power Dissipation	P_D	$\leq P_D$ given in Para.1.5 Maximum Ratings	mW

NOTES:

- T_{case} shall be adjusted to attain the specified T_j .

2.10 OPERATING LIFE CONDITIONS

The conditions shall be as specified in Para. 2.9 for Burn-in 2.

APPENDIX A

AGREED DEVIATIONS FOR INFINEON TECHNOLOGIES AG (D)

Items Affected	Description of Deviations
Para. 2.1.1 Deviations from Generic Specification: Special In-Process Controls - Chart F2	Bond Strength: The following pre-seal bond strength shall apply: <ul style="list-style-type: none"> • 0.05N minimum Dimension Check: May be performed during Chart F3 testing.
Para. 2.1.1 Deviations from Generic Specification: Final Customer Source Inspection	Final Customer Source Inspection shall be limited to witnessing of the DC parameters specified in Para. 2.5.1 Room Temperature Electrical Measurements.
Para. 2.1.1 Deviations from Generic Specification: Data Documentation	Additional Documentation and Wafer Lot Acceptance Data: If Wafer Lot Acceptance Data is stipulated in the Purchase Order, such data will not be delivered but will be available for review at Infineon Technologies AG.
Para. 2.1.1.1 Deviations from Screening Tests - Chart F3	The following additional screening may be performed at any point prior to initial Room Temperature Electrical Measurements in Chart F3: Pre-Burn-in in accordance with MIL-STD-750, Test Method 1039 , Test Condition A, with other Test Conditions as specified in Para. 2.8 Burn-in 1 Conditions. <ul style="list-style-type: none"> • Duration: ≥ 72 hours. Temperature Cycling: Shall be replaced by a Thermal Shock test in accordance with MIL-STD-202, Test Method 107 , Test Condition B, 20 cycles.
Para. 2.1.1.2 Deviations from Qualification and Periodic Tests - Chart F4	Temperature Cycling: Shall be replaced by a Thermal Shock test in accordance with MIL-STD-202, Test Method 107 , Test Condition B, 100 cycles. Assembly Capability Subgroup tests: In addition to the permitted use of empty packages or electrical rejects as test samples, components rejected during the following Screening Tests: <ul style="list-style-type: none"> • Radiographic Inspection • Seal • External Visual Inspection may be used on the condition that the cause for rejection has no possible impact on the tests, and they have been subjected to the same screening as the packages of the assembly lot with which they are associated. Bond Strength: The following post-seal bond strength shall apply: <ul style="list-style-type: none"> • 0.04N minimum