



CAPACITORS, FIXED, FILM DIELECTRIC

ESCC Generic Specification No. 3006

Issue 3	February 2020
---------	---------------



LEGAL DISCLAIMER AND COPYRIGHT

European Space Agency, Copyright © 2020. All rights reserved.

The European Space Agency disclaims any liability or responsibility, to any person or entity, with respect to any loss or damage caused, or alleged to be caused, directly or indirectly by the use and application of this ESCC publication.

This publication, without the prior permission of the European Space Agency and provided that it is not used for a commercial purpose, may be:

- copied in whole, in any medium, without alteration or modification.
- copied in part, in any medium, provided that the ESCC document identification, comprising the ESCC symbol, document number and document issue, is removed.

DOCUMENTATION CHANGE NOTICE

(Refer to <https://escies.org> for ESCC DCR content)

DCR No.	CHANGE DESCRIPTION
1231	Specification up issued to incorporate changes per DCR.

TABLE OF CONTENTS

1	INTRODUCTION	8
1.1	SCOPE	8
1.2	APPLICABILITY	8
2	APPLICABLE DOCUMENTS	8
2.1	ESCC SPECIFICATIONS	8
2.2	OTHER (REFERENCE) DOCUMENTS	9
2.3	ORDER OF PRECEDENCE	9
3	TERMS, DEFINITIONS, ABBREVIATIONS, SYMBOLS AND UNITS	9
4	REQUIREMENTS	9
4.1	GENERAL	9
4.1.1	Specifications	10
4.1.2	Conditions and Methods of Test	10
4.1.3	Manufacturer's Responsibility for Performance of Tests and Inspections	10
4.1.4	Inspection Rights	10
4.1.5	Pre-Assembly Customer Source Inspection	10
4.2	QUALIFICATION AND QUALIFICATION MAINTENANCE REQUIREMENTS ON A MANUFACTURER	10
4.3	DELIVERABLE COMPONENTS	10
4.3.1	ESCC Qualified Components	10
4.3.2	ESCC Components	11
4.3.3	Lot Failure	11
4.4	MARKING	11
4.5	MATERIALS AND FINISHES	11
5	PRODUCTION CONTROL	12
5.1	GENERAL	12
5.2	SPECIAL IN-PROCESS CONTROLS	12
5.2.1	Internal Visual Inspection	12
5.2.2	Dimension Check	12
5.2.3	Weight	12
5.2.4	Documentation	12
6	SCREENING TESTS	12
6.1	GENERAL	12
6.2	FAILURE CRITERIA	12
6.2.1	Environmental and Mechanical Test Failure	12
6.2.2	Parameter Limit Failure	13
6.2.3	Other Failures	13
6.3	FAILED COMPONENTS	13

6.4	LOT FAILURE	13
6.4.1	Lot Failure during 100% Testing	13
6.4.2	Lot Failure during Sample Testing	13
6.5	DOCUMENTATION	13
7	QUALIFICATION, QUALIFICATION MAINTENANCE AND LOT VALIDATION TESTING	13
7.1	QUALIFICATION TESTING	14
7.1.1	General	14
7.1.2	Distribution within the Qualification Test Lot	14
7.2	QUALIFICATION WITHIN A TECHNOLOGY FLOW	14
7.3	QUALIFICATION MAINTENANCE (PERIODIC TESTING)	14
7.4	LOT VALIDATION TESTING	15
7.5	FAILURE CRITERIA	15
7.5.1	Environmental and Mechanical Test Failures	15
7.5.2	Electrical Failures	15
7.5.3	Other Failures	15
7.6	FAILED COMPONENTS	15
7.7	LOT FAILURE	16
7.8	QUALIFICATION, PERIODIC TESTING AND LOT VALIDATION TESTING SAMPLES	16
7.9	DOCUMENTATION	16
8	TEST METHODS AND PROCEDURES	16
8.1	INTERNAL VISUAL INSPECTION	16
8.2	EXTERNAL VISUAL INSPECTION AND DIMENSION CHECK	16
8.3	RAPID CHANGE OF TEMPERATURE	17
8.4	ELECTRICAL MEASUREMENTS	17
8.4.1	General	17
8.4.1.1	Capacitance	17
8.4.1.2	Tangent of Loss Angle	17
8.4.1.3	Insulation Resistance	18
8.4.1.4	Voltage Proof	18
8.4.1.5	Temperature Coefficient	19
8.4.2	Room Temperature Electrical Measurements	19
8.4.3	High and Low Temperatures Electrical Measurements	19
8.4.4	Intermediate and End-Point Electrical Measurements	19
8.5	SEAL (FINE AND GROSS LEAK)	19
8.5.1	Fine Leak	19
8.5.2	Gross Leak	19
8.6	BURN-IN	19

8.7	VIBRATION	20
8.8	SHOCK	20
8.9	CLIMATIC SEQUENCE	21
8.9.1	Initial Measurements	21
8.9.2	Dry Heat	21
8.9.3	Damp Heat, Accelerated, First Cycle	21
8.9.4	Cold	21
8.9.5	Low Air Pressure	21
8.9.6	Damp Heat, Accelerated, Remaining Cycles	21
8.9.7	Final Inspection and Electrical Measurements (Data Points)	21
8.10	ROBUSTNESS OF TERMINATIONS	22
8.11	RESISTANCE TO SOLDERING HEAT	22
8.12	RADIOGRAPHIC INSPECTION	22
8.13	OPERATING LIFE	23
8.14	SOLDERABILITY	23
8.15	PERMANENCE OF MARKING	23
9	DATA DOCUMENTATION	24
9.1	GENERAL	24
9.1.1	Qualification and Qualification Maintenance	24
9.1.2	Component Procurement and Delivery	24
9.1.3	Additional Documentation	24
9.1.4	Data Retention/Data Access	24
9.2	COVER SHEET(S)	25
9.3	LIST OF EQUIPMENT USED	25
9.4	LIST OF TEST REFERENCES	25
9.5	SPECIAL IN-PROCESS CONTROLS DATA (CHART F2)	25
9.6	SCREENING TESTS DATA (CHART F3)	25
9.7	QUALIFICATION, PERIODIC TESTING AND LOT VALIDATION TESTING DATA (CHART F4)	25
9.7.1	Qualification Testing	25
9.7.2	Periodic Testing for Qualification Maintenance	26
9.7.3	Lot Validation Testing	26
9.8	FAILED COMPONENTS LIST AND FAILURE ANALYSIS REPORT	26
9.9	CERTIFICATE OF CONFORMITY	26
10	DELIVERY	26
11	PACKAGING AND DESPATCH	27
12	CHARTS	28
12.1	CHART F1 – GENERAL FLOW OF PROCUREMENT	28



12.2	CHART F2 – PRODUCTION CONTROL	29
12.3	CHART F3 – SCREENING TESTS	30
12.4	CHART F4 – QUALIFICATION, PERIODIC TESTING AND LOT VALIDATION TESTING	31

1 INTRODUCTION

1.1 SCOPE

This specification defines the general requirements for the qualification, qualification maintenance, procurement, and delivery of fixed film dielectric capacitors for space applications. This specification contains the appropriate inspection and test schedules and also specifies the data documentation requirements.

1.2 APPLICABILITY

This specification is primarily applicable to the granting of qualification approval to components qualified in accordance with one of the following ESCC methods:

- Qualification of Standard Components per ESCC Basic Specification No. [20100](#).
- Technology Flow Qualification per ESCC Basic Specification No. [25400](#).

It is also primarily applicable to the procurement of components so qualified.

This specification may also be applied to the procurement of unqualified components, recommendations for which are given in ESCC Basic Specification No. [23100](#).

2 APPLICABLE DOCUMENTS

The following documents form part of, and shall be read in conjunction with, this specification. The relevant issues shall be those in effect on the date of starting qualification or placing the Purchase Order.

2.1 ESCC SPECIFICATIONS

- No. [20100](#), Requirements for the Qualification of Standard Electronic Components for Space Application.
- No. [20400](#), Internal Visual Inspection.
- No. [20500](#), External Visual Inspection.
- No. [20600](#), Preservation, Packaging and Despatch of ESCC Components.
- No. [20900](#), Radiographic Inspection of Electronic Components.
- No. [21300](#), Terms, Definitions, Abbreviations, Symbols and Units.
- No. [21700](#), General Requirements for the Marking of ESCC Components.
- No. [22600](#), Requirements for the Evaluation of Standard Electronic Components for Space Application.
- No. [22800](#), ESCC Non-Conformance Control System.
- No. [23100](#), Recommendations on the use of the ESCC Specification System for the Evaluation and Procurement of Unqualified Components.
- No. [23500](#), Lead Materials and Finishes for Components for Space Application.
- No. [24600](#), Minimum Quality System Requirements.
- No. [24800](#), Resistance to Solvents of Marking, Materials and Finishes.
- No. [25400](#), Requirements for the Technology Flow Qualification of Electronic Components for Space Application.

For qualification and qualification maintenance or procurement of qualified components, with the exception of ESCC Basic Specifications Nos. [20100](#), [21700](#), [22800](#), [24600](#) and [25400](#), where Manufacturers' specifications are equivalent to, or more stringent than, the ESCC Basic Specifications listed above, they may be used in place of the latter, subject to the approval of the ESCC Executive.

Such replacements shall be clearly identified in the applicable Process Identification Document (PID).

For procurement of unqualified components, where Manufacturers' specifications are equivalent to or more stringent than the ESCC Basic Specifications listed above, they may be used in place of the latter subject to the approval of the Orderer.

Such replacements may be listed in an appendix to the appropriate Detail Specification at the request of the Manufacturer or Orderer, subject to the approval of the ESCC Executive.

Unless otherwise stated herein, references within the text of this specification to "the Detail Specification" shall mean the relevant ESCC Detail Specification.

2.2 OTHER (REFERENCE) DOCUMENTS

- IEC Publication No. 60068 Part 2, Basic Environmental Testing Procedures.
- IEC Publication No. 60384-1 Part 1, Generic Specification for Fixed Capacitors for Use in Electronic Equipment.

2.3 ORDER OF PRECEDENCE

For the purpose of interpretation and in case of conflict with regard to documentation, the following order of precedence shall apply:

- (a) ESCC Detail Specification.
- (b) ESCC Generic Specification.
- (c) ESCC Basic Specification.
- (d) Other documents, if referenced herein.

3 TERMS, DEFINITIONS, ABBREVIATIONS, SYMBOLS AND UNITS

The terms, definitions, abbreviations, symbols and units specified in ESCC Basic Specification No. [21300](#) shall apply.

4 REQUIREMENTS

4.1 GENERAL

The requirements for the qualification of a component shall be in accordance with ESCC Basic Specification No. [20100](#).

The requirements for Technology Flow Qualification and the listing of qualified component types shall be in accordance with ESCC Basic Specification No. [25400](#).

The test requirements for procurement of both qualified and unqualified components (see Chart F1) shall comprise:

- Special In-Process Controls.
- Screening Tests.

- Periodic Testing (for qualified components only).
- Lot Validation Testing if stipulated in the Purchase Order.

4.1.1 Specifications

For qualification, qualification maintenance, procurement and delivery of components in conformity with this specification, the applicable specifications listed in Section 2 of this document shall apply in total unless otherwise specified herein or in the Detail Specification.

4.1.2 Conditions and Methods of Test

The conditions and methods of test shall be in accordance with this specification, the ESCC Basic Specifications referenced herein and the Detail Specification.

4.1.3 Manufacturer's Responsibility for Performance of Tests and Inspections

The Manufacturer shall be responsible for the performance of tests and inspections required by the applicable specifications. These tests and inspections shall be performed at the plant of the Manufacturer of the components unless it is agreed by the ESCC Executive (for qualification, qualification maintenance, or procurement of qualified components) or the Orderer (for procurement of unqualified components), to use an approved external facility.

4.1.4 Inspection Rights

The ESCC Executive (for qualification, qualification maintenance, or procurement of qualified components) or the Orderer (for procurement of unqualified components if stipulated in the Purchase Order) reserves the right to monitor any of the tests and inspections scheduled in the applicable specifications.

4.1.5 Pre-Assembly Customer Source Inspection

If stipulated in the Purchase Order, the Orderer may perform a source inspection at the Manufacturer's facility prior to final assembly (including, for example, performance of Internal Visual Inspection). Details of the inspections to be performed or witnessed and the required period of notification shall be as stipulated in the Purchase Order.

4.2 QUALIFICATION AND QUALIFICATION MAINTENANCE REQUIREMENTS ON A MANUFACTURER

To obtain and maintain the qualification of a component, or family of components, a Manufacturer shall satisfy the requirements of ESCC Basic Specification No. [20100](#).

To obtain and maintain the qualification of a component produced using a qualified Technology Flow, a Manufacturer shall satisfy the requirements of ESCC Basic Specification No. [25400](#).

4.3 DELIVERABLE COMPONENTS

4.3.1 ESCC Qualified Components

Components delivered to this specification shall be processed and inspected in accordance with the relevant Process Identification Document (PID).

4.3.2 ESCC Components

Each component, irrespective of qualification status, identified with an ESCC component number and delivered to this specification shall:

- be traceable to its production lot.
- have satisfactorily completed all the tests required by the relevant issues of the applicable specifications.
- be produced from lots that are considered by the Manufacturer to be capable of passing all applicable tests, and sequences of tests, that are defined in Chart F4. The Manufacturer shall not knowingly supply components that cannot meet this requirement. In the event that, subsequent to delivery and prior to operational use, a component is found to be in a condition such that, demonstrably, it could not have passed these tests at the time of manufacture, this shall be grounds for rejection of the delivered lot.

4.3.3 Lot Failure

Lot failure may occur during Screening Tests (Chart F3) or Qualification, Periodic Testing and Lot Validation Testing (Chart F4).

Should such failure occur during qualification, qualification maintenance or procurement of qualified components the Manufacturer shall initiate the non-conformance procedure in accordance with ESCC Basic Specification No. [22800](#). The Manufacturer shall notify the Orderer and the ESCC Executive by any appropriate written means, within 5 working days, giving details of the number and mode of failure and the suspected cause. No further testing or analysis shall be performed on the failed components until so instructed by the ESCC Executive.

Should such failure occur during procurement of unqualified components the Manufacturer shall notify the Orderer by any appropriate written means within 5 working days, giving details of the number and mode of failure and the suspected cause. No further testing or analysis shall be performed on the failed components until so instructed by the Orderer. The Orderer shall inform the Manufacturer within 5 working days of receipt of notification what action shall be taken.

4.4 MARKING

All components procured and delivered to this specification shall be marked in accordance with ESCC Basic Specification No. [21700](#).

4.5 MATERIALS AND FINISHES

Specific requirements for materials and finishes are specified in the Detail Specification. Where a definite material or finish is not specified a material or finish shall be used so as to ensure that the component meets the performance requirements of this specification and the Detail Specification. Acceptance or approval of any constituent material or finish does not guarantee acceptance of the finished product.

All materials and finishes of the components specified in the Detail Specification shall comply with the restrictions on materials specified in ESCC Basic Specification No. [22600](#).

5 PRODUCTION CONTROL

5.1 GENERAL

Unless otherwise specified herein or in the Detail Specification all lots of components used for qualification and qualification maintenance, Lot Validation Testing and for delivery shall be subject to tests and inspections in accordance with Chart F2 in the sequence shown.

Any components which do not meet these requirements shall be removed from the lot and at no future time be resubmitted to the requirements of this specification.

The applicable test requirements are detailed in the paragraphs referenced in Chart F2.

For qualified components the full production control provisions are defined in the PID.

5.2 SPECIAL IN-PROCESS CONTROLS

5.2.1 Internal Visual Inspection

Internal Visual Inspection shall be performed in accordance with Para. 8.1.

5.2.2 Dimension Check

Dimension Check shall be performed in accordance with Para. 8.2 on 3 samples.

In the event of any failure a 100% Dimension Check shall be performed.

5.2.3 Weight

The maximum weight of the component specified in the Detail Specification shall be guaranteed but not tested.

5.2.4 Documentation

Documentation of Special In-Process Controls shall be in accordance with Para. 9.5.

6 SCREENING TESTS

6.1 GENERAL

Unless otherwise specified herein or in the Detail Specification, all lots of components used for qualification and qualification maintenance, Lot Validation Testing, and for delivery, shall be subjected to tests and inspections in accordance with Chart F3 in the sequence shown.

Any components which do not meet these requirements shall be removed from the lot and at no future time be resubmitted to the requirements of this specification.

The applicable test methods and conditions are specified in the paragraphs referenced in Chart F3.

6.2 FAILURE CRITERIA

6.2.1 Environmental and Mechanical Test Failure

The following shall be counted as component failures:

- Components which fail during tests for which the pass/fail criteria are inherent in the test method, i.e. Seal (Fine and Gross Leak), External Visual Inspection.

6.2.2 Parameter Limit Failure

A component shall be counted as a limit failure if one or more parameters exceed the limits shown in Room Temperature Electrical Measurements or High and Low Temperatures Electrical Measurements in the Detail Specification.

Any component which exhibits a limit failure prior to the submission to Burn-in shall be rejected and not counted when determining lot rejection.

6.2.3 Other Failures

A component shall be counted as a failure in any of the following cases:

- Visual failure.
- Mechanical failure.
- Handling failure.
- Lost component.

6.3 FAILED COMPONENTS

A component shall be considered as a failed component if it exhibits one or more of the failure modes described in Para. 6.2.

6.4 LOT FAILURE

In the case of lot failure, the Manufacturer shall act in accordance with Para. 4.3.3.

6.4.1 Lot Failure during 100% Testing

If the number of components failed on the basis of the failure criteria specified in Para. 6.2.2 exceeds 3% (rounded upwards to the nearest whole number) of the components submitted to Burn-in of Chart F3, the lot shall be considered as failed.

If a lot is composed of groups of components of one family defined in one ESCC Detail Specification, but separately identifiable for any reason, then the lot failure criteria shall apply separately to each identifiable group.

6.4.2 Lot Failure during Sample Testing

A lot shall be considered as failed if the number of allowable failures during sample testing as specified herein or in the Detail Specification, is exceeded.

Unless otherwise specified, if a lot failure occurs, a 100% testing may be performed but the cumulative percent defective shall not exceed that specified in Para. 6.4.1.

6.5 DOCUMENTATION

Documentation of Screening Tests shall be in accordance with Para. 9.6.

7 QUALIFICATION, QUALIFICATION MAINTENANCE AND LOT VALIDATION TESTING

The requirements of this paragraph are applicable to the tests performed on components or test structures as part of qualification or qualification maintenance in accordance with either ESCC Basic Specification No. 20100 or 25400 as applicable. They are also applicable to Lot Validation Testing as part of the procurement of qualified or unqualified components.

All components shall be serialised prior to the tests and inspections.

7.1 QUALIFICATION TESTING

7.1.1 General

Qualification Testing shall be in accordance with the requirements specified in Chart F4. The tests of Chart F4 shall be performed on the specified sample, chosen at random from components which have successfully passed the tests in Chart F3. This sample constitutes the Qualification Test Lot.

The Qualification Test Lot is divided into subgroups of tests and all components assigned to a subgroup shall be subjected to all of the tests in that subgroup, in the sequence shown. The applicable test requirements are detailed in the paragraphs referenced in Chart F4.

The conditions governing qualification testing are specified in ESCC Basic Specification No. [20100](#).

7.1.2 Distribution within the Qualification Test Lot

Where a Detail Specification covers a range, or series of components that are considered similar, then the Qualification Test Lot shall be comprised of test vehicles so selected that they adequately represent all of the various mechanical, structural and electrical peculiarities of that range or series.

In addition, the Qualification Test Lot test vehicles shall be selected in accordance with the following provisions:

- Components with the maximum and minimum rated voltage proposed for qualification shall be selected and for these voltages, the maximum and minimum case sizes. If there are more than 4 sizes an intermediate size shall also be selected.
- For each voltage/case size combination selected, the maximum capacitance and tightest tolerance shall be selected.
- Components with differing lead diameters shall be represented.
- Components with critical capacitance value(s) shall be represented.

The test vehicles may be specified by, but in any case shall be agreed with, the ESCC Executive, prior to the commencement of qualification testing and the justification for the selection shall be declared in the qualification test report.

7.2 QUALIFICATION WITHIN A TECHNOLOGY FLOW

The qualification of a component produced using a qualified Technology Flow shall be in accordance with ESCC Basic Specification No. [25400](#).

7.3 QUALIFICATION MAINTENANCE (PERIODIC TESTING)

Qualification is maintained through Periodic Testing and the test requirements of Para. 7.1 shall apply. For each subgroup the sample size and the period between successive subgroup testing shall be as specified in Chart F4. The conditions governing qualification maintenance are specified in ESCC Basic Specification No. [20100](#).

Qualification of a component, produced using a qualified Technology Flow, is maintained by the maintenance of the Technology Flow Qualification itself in accordance with ESCC Basic Specification No. [25400](#).

7.4 LOT VALIDATION TESTING

For procurement of qualified components, Lot Validation Testing is not required and shall only be performed if specifically stipulated in the Purchase Order.

For procurement of unqualified components the need for Lot Validation Testing shall be determined by the Orderer (ref. ESCC Basic Specification No. [23100](#)).

When Lot Validation Testing is required, it shall consist of the performance of one or more of the tests or subgroup test sequences of Chart F4. The testing to be performed and the sample size shall be as stipulated in the Purchase Order.

When procurement of more than one component type is involved from a family, range or series, the selection of representative samples shall also be stipulated in the Purchase Order.

7.5 FAILURE CRITERIA

The following criteria shall apply to Qualification, Periodic Testing and Lot Validation Testing.

7.5.1 Environmental and Mechanical Test Failures

The following shall be counted as component failures:

- Components which fail during tests for which the pass/fail criteria are inherent in the test method, e.g. Robustness of Terminations, Solderability, etc.

7.5.2 Electrical Failures

The following shall be counted as component failures:

- Components which fail one or more of the applicable limits at each of the relevant data points specified for environmental, mechanical and endurance testing in Intermediate and End-Point Electrical Measurements in the Detail Specification.

7.5.3 Other Failures

A component shall be counted as a failure in any of the following cases:

- Visual failure.
- Mechanical failure.
- Handling failure.
- Lost component.

7.6 FAILED COMPONENTS

A component shall be considered as failed if it exhibits one or more of the failure modes detailed in Para. 7.5.

When requested by the ESCC Executive (for qualification, qualification maintenance or procurement of qualified components) or the Orderer (for procurement of qualified or unqualified components), failure analysis of failed components shall be performed under the responsibility of the Manufacturer and the results provided.

Failed components shall be retained at the Manufacturer's plant until the final disposition has been agreed and certified.

7.7 LOT FAILURE

For Qualification Testing and Periodic Testing, the lot shall be considered as failed if one component in any subgroup of Chart F4 is a failed component based on the criteria specified in Para. 7.5.

For procurement, the lot shall be considered as failed if one component in any test specified for Lot Validation Testing is a failed component based on the criteria specified in Para. 7.5.

In the case of lot failure, the Manufacturer shall act in accordance with Para. 4.3.3.

7.8 QUALIFICATION, PERIODIC TESTING AND LOT VALIDATION TESTING SAMPLES

All tests of Chart F4 are considered to be destructive and therefore components so tested shall not form part of the delivery lot.

7.9 DOCUMENTATION

Documentation of Qualification, Periodic Testing and Lot Validation Testing shall be in accordance with Para. 9.7.

8 TEST METHODS AND PROCEDURES

If a Manufacturer elects to eliminate or modify a test method or procedure, the Manufacturer is still responsible for delivering components that meet all of the performance, quality and reliability requirements defined in this specification and the Detail Specification.

For a qualified component, documentation supporting the change shall be approved by the ESCC Executive and retained by the Manufacturer. It shall be copied, when requested, to the ESCC Executive. The change shall be specified in an appendix to the Detail Specification and in the PID.

For an unqualified component the change shall be approved by the Orderer. The change may be specified in an appendix to the Detail Specification at the request of the Manufacturer or Orderer, subject to the approval of the ESCC Executive.

8.1 INTERNAL VISUAL INSPECTION

ESCC Basic Specification No. [20400](#).

8.2 EXTERNAL VISUAL INSPECTION AND DIMENSION CHECK

External Visual Inspection shall be performed in accordance with ESCC Basic Specification No. [20500](#).

Dimension Check shall be performed in accordance with ESCC Basic Specification No. [20500](#).

8.3 RAPID CHANGE OF TEMPERATURE

Components shall be subjected to Test Na of IEC Publication No. 60068-2-14. The following details shall apply:

- Test Conditions:
 - (a) Low temperature: minimum storage temperature rating as specified in the Detail Specification.
 - (b) High temperature: maximum storage temperature rating as specified in the Detail Specification.
 - (c) Number of cycles: 10.
 - (d) Exposure time (each cycle, each temperature): 30 minutes.
 - (e) Transition time: 1 minute.

- Data Points:
Only applicable to Qualification and Periodic Testing – Chart F4.

Prior to the test, Capacitance shall be measured as specified in Intermediate and End-Point Electrical Measurements in the Detail Specification.

On completion of testing, the components shall be subjected to standard atmospheric conditions for recovery for 24 ±2 hours.

After recovery, the components shall be visually examined. There shall be no evidence of damage. Capacitance, Change in Capacitance and Tangent of Loss Angle shall be measured as specified in Intermediate and End-Point Electrical Measurements in the Detail Specification. Change in Capacitance shall be related to the initial measurements.

8.4 ELECTRICAL MEASUREMENTS

8.4.1 General

Unless otherwise specified in the Detail Specification, the following electrical measurements and test methods apply.

8.4.1.1 *Capacitance*

In accordance with IEC Publication No. 60384-1 clause 4.7. Unless otherwise specified, the following details shall apply:

- (a) Measuring frequency:
 - For $C \leq 1\mu\text{F}$: 1000 ±200Hz
 - For $C > 1\mu\text{F}$: 50Hz - 120Hz
- (b) Measuring voltage:
 - For $C \leq 1\mu\text{F}$: $\leq 0.04 \times U_R$
 - For $C > 1\mu\text{F}$: $0.2 \times U_R$ or 70Vrms (whichever is less)

Temperature variation due to handling shall be avoided.

8.4.1.2 *Tangent of Loss Angle*

In accordance with IEC Publication No. 60384-1 clause 4.8.1. Unless otherwise specified, the following details shall apply:

- (a) Measuring frequency:
 - For $C \leq 1\mu\text{F}$: 1000 ±200Hz
 - For $C > 1\mu\text{F}$: 50Hz - 120Hz

- (b) Measuring voltage:
- For $C \leq 1\mu\text{F}$: $\leq 0.04 \times U_R$
 - For $C > 1\mu\text{F}$: $0.2 \times U_R$ or 70Vrms (whichever is less)

Temperature variation due to handling shall be avoided.

8.4.1.3 *Insulation Resistance*

Unless otherwise specified, in accordance with IEC Publication No. 60384-1 clause 4.5, tests A (Dielectric), B (Internal Insulation) and C (Body Insulation) as applicable.

For insulated capacitors tested during Screening Tests, Insulation Resistance (Body Insulation) per test C shall be performed on a sample of 5 components from each manufacturing lot with 0 failures allowed. In the event of any failure a 100% inspection may be performed. In the case of 100% inspection, a 1% total percent defective is allowed.

For sleeved capacitors of diameter $\geq 10\text{mm}$ and length $\geq 27\text{mm}$ tested during Qualification and Periodic Testing, the insulation resistance shall be measured between two wire windings placed $12.7 \pm 0.5\text{mm}$ apart around the sleeve of the capacitor. The wire windings shall consist of three close turns of $1 \pm 0.1\text{mm}$ bare copper wire.

8.4.1.4 *Voltage Proof*

In accordance with IEC Publication No. 60384-1 clause 4.6, tests A (Dielectric), B (Internal Insulation) and C (Body Insulation) as applicable. Unless otherwise specified, the following details shall apply:

- (a) Test voltage:
- Terminal-to-terminal:
- For Screening Tests: $1.6 \times U_R$
 - For Qualification and Periodic Testing: $1.6 \times U_R$ for capacitors with $U_R > 1000\text{V}$; $2 \times U_R$ for capacitors with $U_R \leq 1000\text{V}$
- Terminal-to-case:
- $1.6 \times U_R$ for capacitors with $U_R > 1000\text{V}$
 - $2 \times U_R$ for capacitors with $U_R \leq 1000\text{V}$ with a minimum of 200V.
 - Not applicable when the case is a terminal.
- (b) Voltage application time: 60 (+0 -1)s. Capacitors with $U_R > 500\text{V}$ shall then be short-circuited for 24 hours minimum.
- (c) Charging current: 50pA/pF maximum for $C \leq 1000\text{pF}$; 0.05A maximum for $C > 1000\text{pF}$
- (d) Charging circuit time constant: 1s maximum.

For insulated capacitors tested during Screening Tests, Voltage Proof (Body Insulation) per test C shall be performed on a sample of 5 components from each manufacturing lot with 0 failures allowed. In the event of any failure a 100% inspection may be performed. In the case of 100% inspection, a 1% total percent defective is allowed.

For sleeved capacitors of diameter $\geq 10\text{mm}$ and length $\geq 27\text{mm}$ tested during Qualification and Periodic Testing, a voltage proof test voltage of 4kVdc (unless otherwise specified in the Detail Specification) shall be applied between two wire windings placed $12.7 \pm 0.5\text{mm}$ apart around the sleeve of the capacitor. The wire windings shall consist of three close turns of $1 \pm 0.1\text{mm}$ bare copper wire.

8.4.1.5 *Temperature Coefficient*

The temperature coefficient shall be determined as follows. Unless otherwise specified, components shall be maintained at each of the following temperature steps in turn until both chamber temperature and capacitance have fully stabilised:

- (a) Minimum operating temperature rating $\pm 2^{\circ}\text{C}$, as specified in the Detail Specification.
- (b) $+22 \pm 2^{\circ}\text{C}$ (reference point).
- (c) Maximum operating temperature rating $\pm 2^{\circ}\text{C}$, as specified in the Detail Specification.

- Data Points:

At each step, after stabilisation, Capacitance and chamber temperature shall be measured. Temperature measurement shall be accurate to within 0.5°C .

For Screening Tests: The capacitance change over temperature at each step, referred to the capacitance at the reference point, shall meet the Temperature Coefficient limits specified in High and Low Temperatures Electrical Measurements in the Detail Specification. Measurements shall be on a go-no-go basis.

For Qualification and Periodic Testing: The capacitance change over temperature at each step, referred to the capacitance at the reference point, shall meet the Temperature Coefficient limits specified in Intermediate and End-Point Electrical Measurements in the Detail Specification. Measurements shall be recorded against serial number.

8.4.2 Room Temperature Electrical Measurements

Room Temperature Electrical Measurements shall be performed as specified in the Detail Specification.

8.4.3 High and Low Temperatures Electrical Measurements

High and Low Temperatures Electrical Measurements shall be performed as specified in the Detail Specification. Unless otherwise specified, measurements shall be performed on a sample of 5 components from each manufacturing lot with 0 failures allowed. In the event of any failure a 100% inspection may be performed.

8.4.4 Intermediate and End-Point Electrical Measurements

At each of the relevant data points, Intermediate and End-Point Electrical Measurements shall be performed as specified in the Detail Specification. All values obtained shall be recorded against serial numbers and the parameter drift calculated if specified.

8.5 SEAL (FINE AND GROSS LEAK)

8.5.1 Fine Leak

Components shall be subjected to Test Qk, Method 1, of IEC Publication No. 60068-2-17. The following details shall apply:

- (a) Severity: 1000 hours.
- (b) Immersion pressure: $\leq 400\text{kPa}$, unless otherwise specified in the Detail Specification.

8.5.2 Gross Leak

Components shall be subjected to Test Qc, Method 1, of IEC Publication No. 60068-2-17.

8.6 BURN-IN

Components shall be subjected to an endurance test in accordance with IEC Publication No. 60384-1 clause 4.23. The test conditions shall be as specified in Burn-in in the Detail Specification.

Unless otherwise specified, the burn-in duration shall be 96 hours minimum.

8.7 VIBRATION

Components shall be subjected to Test Fc of IEC Publication No. 60068-2-6. The following details shall apply:

- Test Conditions:
 - (a) Frequency Range and Duration: The entire frequency range of 10 to 2000Hz and return to 10Hz shall be traversed in 10 minutes. This cycle shall be performed 12 times in each of three mutually perpendicular directions (total of 36 times), so that the motion shall be applied for a total period of approximately 6 hours.
 - (b) Amplitude: 1.5mm or 200m/s² whichever is the less severe.
 - (c) Applied voltage: 0.5×U_R
 - (d) Mounting: The components shall be mechanically connected to the vibration generator either directly or by means of a fixture. Mounting fixtures shall enable the components to be vibrated in 3 mutually perpendicular axes in turn, which should be so chosen that faults are most likely to be revealed. If the component is provided with specific means of mounting, they shall be used and any additional restraining straps should be avoided. Unless otherwise specified, components not provided with specific means of mounting shall be clamped by the body and leads (leads clamped at 6mm from the body). External connections should add the minimum restraint and mass.
- Data Points:

During the last cycle in each direction, the components shall be monitored for intermittent electrical connection of 0.5ms or longer, or open or short circuits.

On completion of testing, the components shall be visually examined and there shall be no evidence of damage.

8.8 SHOCK

Components shall be subjected to Test Ea of IEC Publication No. 60068-2-27. The following details shall apply:

- Test Conditions:
 - (a) Pulse shape: Half-sine.
 - (b) Peak acceleration: 500m/s²
 - (c) Pulse duration: 11ms
 - (d) Applied voltage: 0.5×U_R
 - (e) Mounting: The components shall be mechanically connected to the shock machine either directly or by means of a fixture. Mounting fixtures shall enable the components to be shocked in 3 mutually perpendicular axes in turn, which should be so chosen that faults are most likely to be revealed. If the component is provided with specific means of mounting, they shall be used and any additional restraining straps should be avoided. Unless otherwise specified, components not provided with specific means of mounting shall be clamped by the body and leads (leads clamped at 6mm from the body). Any external connections should add the minimum restraint and mass.
- Data Points:

During the last cycle in each direction, the components shall be monitored for intermittent electrical connection of 0.5ms or longer, or open or short circuits.

On completion of testing, the components shall be visually examined and there shall be no evidence of damage.

8.9 CLIMATIC SEQUENCE

8.9.1 Initial Measurements

Capacitance shall be measured as specified in Intermediate and End-Point Electrical Measurements in the Detail Specification.

8.9.2 Dry Heat

Components shall be subjected to Test Bb of IEC Publication No. 60068-2-2 under the following conditions:

- (a) Duration: 2 hours.
- (b) Temperature: Maximum storage temperature as specified in Maximum Ratings in the Detail Specification.

8.9.3 Damp Heat, Accelerated, First Cycle

Unless otherwise specified in the Detail Specification, the components shall be subjected to Test Db, Severity b (+55°C), Variant 2, of IEC Publication No. 60068-2-30 for one cycle of 24 hours. After recovery, the components shall be subjected immediately to the Cold test.

8.9.4 Cold

The components shall be subjected to Test Ab of IEC Publication No. 60068-2-1 under the following conditions:

- (a) Duration: 2 hours.
- (b) Temperature: Minimum storage temperature as specified in Maximum Ratings in the Detail Specification.

8.9.5 Low Air Pressure

The components shall be subjected to Test M of IEC Publication No. 60068-2-13 under the following conditions:

- (a) 1 or 2 minutes at 8.5kPa
- (b) Temperature: +15 to +35°C
- (c) Applied voltage: $1.25 \times U_R$ applied for 1 to 2 minutes immediately after the pressure of 8.5kPa has been attained.

8.9.6 Damp Heat, Accelerated, Remaining Cycles

The components shall be subjected to Test Db, Severity b (+55°C), Variant 2, of IEC Publication No. 60068-2-30 for 5 cycles of 24 hours.

8.9.7 Final Inspection and Electrical Measurements (Data Points)

On completion of testing and after a recovery period of 1 to 24 hours, the components shall be visually inspected and there shall be no evidence of corrosion, and, for sleeved components, unwrapping of or mechanical damage to the sleeve. For sleeved components, the voltage proof – sleeve test shall be performed, and the insulation resistance – sleeve shall be measured. The limits specified in Intermediate and End-Point Electrical Measurements in the Detail Specification shall be met.

For sleeved components, the sleeving shall be removed. Capacitance, Change in Capacitance, Tangent of Loss Angle, Voltage Proof and Insulation Resistance shall be measured as specified in Intermediate and End-Point Electrical Measurements in the Detail Specification. Change in Capacitance shall be related to the initial measurements.

8.10 ROBUSTNESS OF TERMINATIONS

Components shall be subjected to Tests Ua, Ub, Uc and Ud of IEC Publication No. 60068-2-21, as applicable and as specified in the Detail Specification.

Tests Ub and Uc shall not be applied if the Detail Specification describes the terminations as rigid.

- Data Points:
After each of the tests, the components shall be visually examined. There shall be no evidence of damage, but cracking of the coating extending down the wire is permitted.

8.11 RESISTANCE TO SOLDERING HEAT

Unless otherwise specified, components shall be subjected to Test Tb of IEC Publication No. 60068-2-20. Unless otherwise specified, the following details shall apply:

- Test Conditions:
 - (a) Test method: 1A (+260 \pm 5°C)
 - (b) Immersion depth: Minimum soldering distance as specified in Maximum Ratings in the Detail Specification. For surface mount components, only the part of the terminals designed to be soldered shall be tested.
 - (c) Immersion time: Maximum soldering time as specified in Maximum Ratings in the Detail Specification.
- Data Points:
Prior to the test, Capacitance shall be measured as specified in Intermediate and End-Point Electrical Measurements in the Detail Specification.

On completion of testing, the components shall be subjected to standard atmospheric conditions for recovery for 1.5 \pm 0.5 hours.

After recovery, Capacitance, Change in Capacitance, Insulation Resistance and Tangent of Loss Angle shall be measured as specified in Intermediate and End-Point Electrical Measurements in the Detail Specification. Change in Capacitance shall be related to the initial measurements.

8.12 RADIOGRAPHIC INSPECTION

In accordance with ESCC Basic Specification No. [20900](#).

8.13 OPERATING LIFE

Components shall be subjected to an endurance test in accordance with IEC Publication No. 60384-1 clause 4.23. Unless otherwise specified, the following details shall apply:

- Test Conditions:
 - (a) Duration:
2000 \pm 48 hours; applicable to Qualification Testing, and to Periodic Testing for renewal of qualification after lapse.
1000 \pm 24 hours; applicable to Periodic Testing for extension of qualification.
 - (b) Temperature: Maximum operating temperature (+0 -5) $^{\circ}$ C, as specified in Maximum Ratings in the Detail Specification.
 - (c) Applied voltage: 1.4 \times U_R
- Data Points:
Prior to the test, Capacitance shall be measured (initial measurements) as specified in Intermediate and End-Point Electrical Measurements in the Detail Specification.

For a 2000 hour Operating Life test, testing shall be stopped after 1000 \pm 48 hours for intermediate measurements. The components shall be subjected to standard atmospheric conditions for recovery for 24 \pm 2 hours. After recovery, Capacitance and Change in Capacitance shall be measured as specified in Intermediate and End-Point Electrical Measurements in the Detail Specification. Change in Capacitance shall be related to the initial measurements. On completion of intermediate electrical measurements, components shall be returned to Operating Life testing.

On completion of testing (1000 or 2000 hours), the components shall be subjected to standard atmospheric conditions for recovery for 24 \pm 2 hours.

After recovery, the components shall be visually examined (and, for sleeved components, the sleeving shall be removed). There shall be no evidence of damage or corrosion. Capacitance, Change in Capacitance, Tangent of Loss Angle and Insulation Resistance shall be measured as specified in Intermediate and End-Point Electrical Measurements in the Detail Specification. Change in Capacitance shall be related to the initial measurements.

8.14 SOLDERABILITY

Unless otherwise specified, components shall be subjected to Test Ta of IEC Publication No. 60068-2-20. Unless otherwise specified, the following details shall apply:

- Test Conditions:
Test method 1 (solder bath, +235 \pm 5 $^{\circ}$ C for 2 \pm 0.5s) shall apply with immersion depth set at the minimum soldering distance as specified in Maximum Ratings in the Detail Specification.
If specified in the Detail Specification test method 3 (solder globule) shall be applied. The maximum soldering time shall be as specified in Maximum Ratings in the Detail Specification.
Where test method 1 or 3 are impracticable and if specified in the Detail Specification, test method 2 (soldering iron) shall be applied with soldering iron size A.

8.15 PERMANENCE OF MARKING

ESCC Basic Specification No. [24800](#).

9 DATA DOCUMENTATION

9.1 GENERAL

For the qualification, qualification maintenance and procurement for each lot a data documentation package shall exist in a printed or electronic form.

This package shall be compiled from:

- (a) Cover sheet (or sheets).
- (b) List of equipment (testing and measuring).
- (c) List of test references.
- (d) Special In-Process Controls data (Chart F2).
- (e) Screening Tests data (Chart F3).
- (f) Qualification, Periodic Testing and Lot Validation Testing (when applicable) data (Chart F4).
- (g) Failed components list and failure analysis report (when applicable).
- (h) Certificate of Conformity.

Items (a) to (h) inclusive shall be grouped, preferably as sub-packages and, for identification purposes, each page shall include the following information:

- ESCC Component Number.
- Manufacturer's name.
- Lot identification.
- Date of establishment of the document.
- Page number.

Whenever possible, documentation should preferably be available in electronic format suitable for reading using a compatible PC. The format supplied shall be legible, durable and indexed. The preferred storage medium is CD-ROM and the preferred file format is PDF.

9.1.1 Qualification and Qualification Maintenance

In the case of qualification or qualification maintenance, the items listed in Para. 9.1(a) to (h) are required.

9.1.2 Component Procurement and Delivery

For all deliveries of components procured to this specification, the following documentation shall be supplied:

- (a) Cover sheet (if all of the information is not included on the Certificate of Conformity).
- (b) Certificate of Conformity.

9.1.3 Additional Documentation

The Manufacturer shall deliver additional documentation containing data and reports to the Orderer, if stipulated in the Purchase Order.

9.1.4 Data Retention/Data Access

If not delivered, all data shall be retained by the Manufacturer for a minimum of 5 years during which time it shall be available for review, if requested, by the Orderer or the ESCC Executive (for qualified components).

9.2 COVER SHEET(S)

The cover sheet(s) of the data documentation package shall include as a minimum:

- (a) Reference to the Detail Specification, including issue and date.
- (b) Reference to the applicable ESCC Generic Specification, including issue and date.
- (c) ESCC Component Number and the Manufacturer's part type number.
- (d) Lot identification.
- (e) Number of the Purchase Order.
- (f) Information relative to any additions to this specification and/or the Detail Specification.
- (g) Manufacturer's name and address.
- (h) Location of the manufacturing plant.
- (i) Signature on behalf of Manufacturer.
- (j) Total number of pages of the data package.

9.3 LIST OF EQUIPMENT USED

A list of equipment used for tests and measurements shall be prepared. Where applicable, this list shall contain inventory number, Manufacturer's type number, serial number, etc. This list shall indicate for which tests such equipment was used.

9.4 LIST OF TEST REFERENCES

This list shall include all Manufacturer's references or codes which are necessary to correlate the test data provided with the applicable tests specified in the tables of the Detail Specification.

9.5 SPECIAL IN-PROCESS CONTROLS DATA (CHART F2)

A test result summary shall be compiled showing the total number of components submitted to, and the total number rejected after each of the tests.

9.6 SCREENING TESTS DATA (CHART F3)

A test result summary shall be compiled showing the total number of components submitted to and the total number rejected after each of the tests.

9.7 QUALIFICATION, PERIODIC TESTING AND LOT VALIDATION TESTING DATA (CHART F4)

9.7.1 Qualification Testing

A test result summary shall be compiled showing the components submitted to, and the number rejected after each test in each subgroup. Component serial numbers for each subgroup shall be identified. For each test requiring electrical measurements the results shall be recorded against component serial number. Where a drift value is specified during a test the drift calculation shall be recorded against component serial number.

9.7.2 Periodic Testing for Qualification Maintenance

A test result summary shall be compiled showing the components submitted to and the number rejected after each test in each subgroup. Component serial numbers for each subgroup shall be identified. For each test requiring electrical measurements the results shall be recorded against component serial number. Where a drift value is specified during a test the drift calculation shall be recorded against component serial number.

In addition to the full test data, a report shall be compiled for each subgroup of Chart F4 to act as the most recent Periodic Testing summary. These reports shall include a list of all tests performed in each subgroup, the ESCC Component Numbers and quantities of components tested, a statement confirming all the results were satisfactory, the date the tests were performed and a reference to the full test data.

9.7.3 Lot Validation Testing

A test result summary shall be compiled showing the components submitted to and the number rejected after each test in each subgroup (as applicable). Component serial numbers for each subgroup shall be identified. For each test requiring electrical measurements the results shall be recorded against component serial number. Where a drift value is specified during a test the drift calculation shall be recorded against component serial number.

9.8 FAILED COMPONENTS LIST AND FAILURE ANALYSIS REPORT

The failed components list and failure analysis report shall provide full details of:

- (a) The reference and description of the test or measurement performed as defined in this specification and/or the Detail Specification during Special In-Process Controls, Screening Tests, and Qualification, Periodic Testing and Lot Validation Testing.
- (b) Traceability information including serial number (if applicable) of the failed component.
- (c) The failed parameter and the failure mode of the component.
- (d) Detailed failure analysis (if requested by the ESCC Executive or Orderer).

9.9 CERTIFICATE OF CONFORMITY

A Certificate of Conformity shall be established in accordance with the requirements of ESCC Basic Specification Nos. [20100](#) or [25400](#).

10 DELIVERY

For procurement, for each order, the items forming the delivery are:

- (a) The delivery lot.
- (b) The components used for Lot Validation Testing (as applicable), but not forming part of the delivery lot, if stipulated in the Purchase Order.
- (c) The relevant documentation in accordance with the requirements of Paras. 9.1.2 and 9.1.3.

In the case of a component for which a valid qualification is in force, all data of all components submitted to Lot Validation Testing shall also be copied, when requested, to the ESCC Executive.

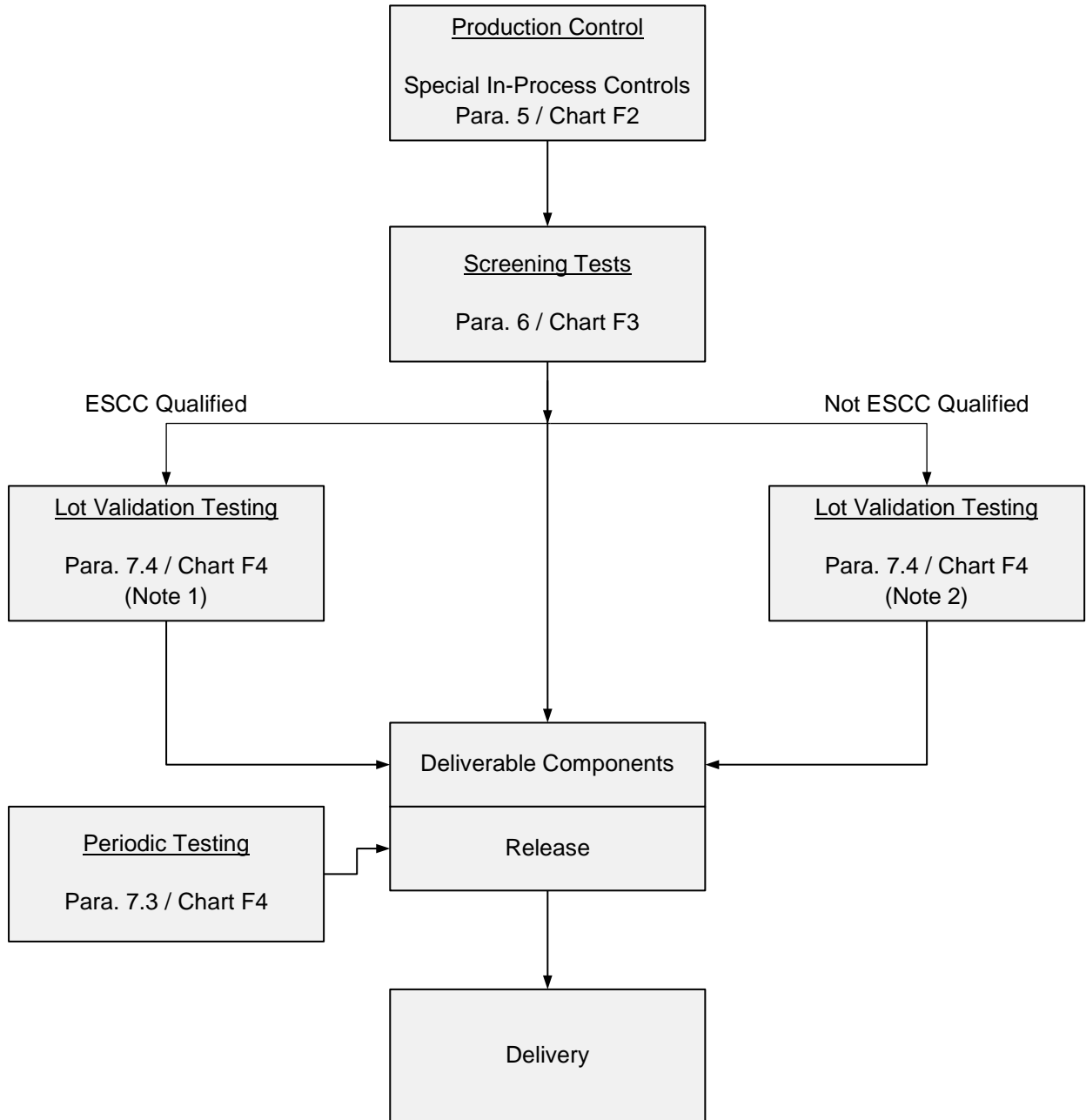
For qualification or qualification maintenance, the disposition of the Qualification Test Lot and its related documentation shall be as specified in ESCC Basic Specification Nos. [20100](#) or [25400](#) and the relevant paragraphs of Section 9 of this specification.

11 **PACKAGING AND DESPATCH**

The packaging and despatch of components to this specification shall be in accordance with the requirements of ESCC Basic Specification No. [20600](#).

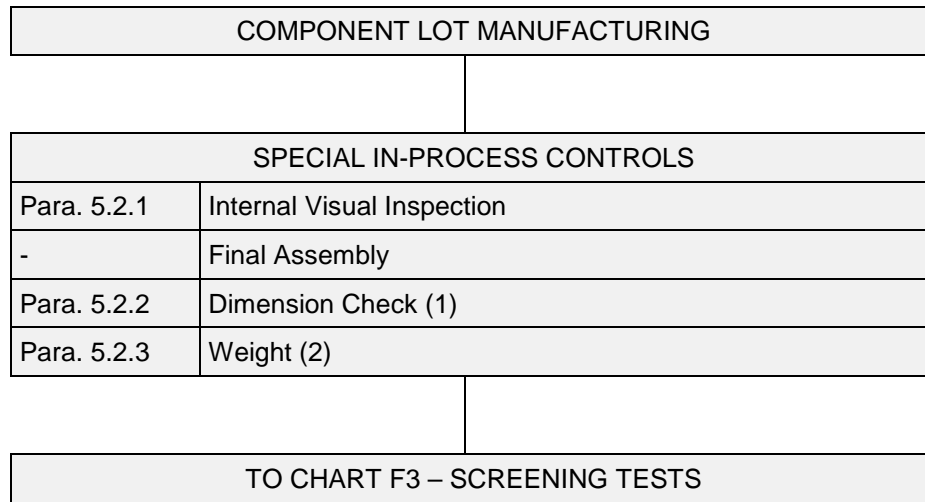
12 **CHARTS**

12.1 **CHART F1 – GENERAL FLOW OF PROCUREMENT**



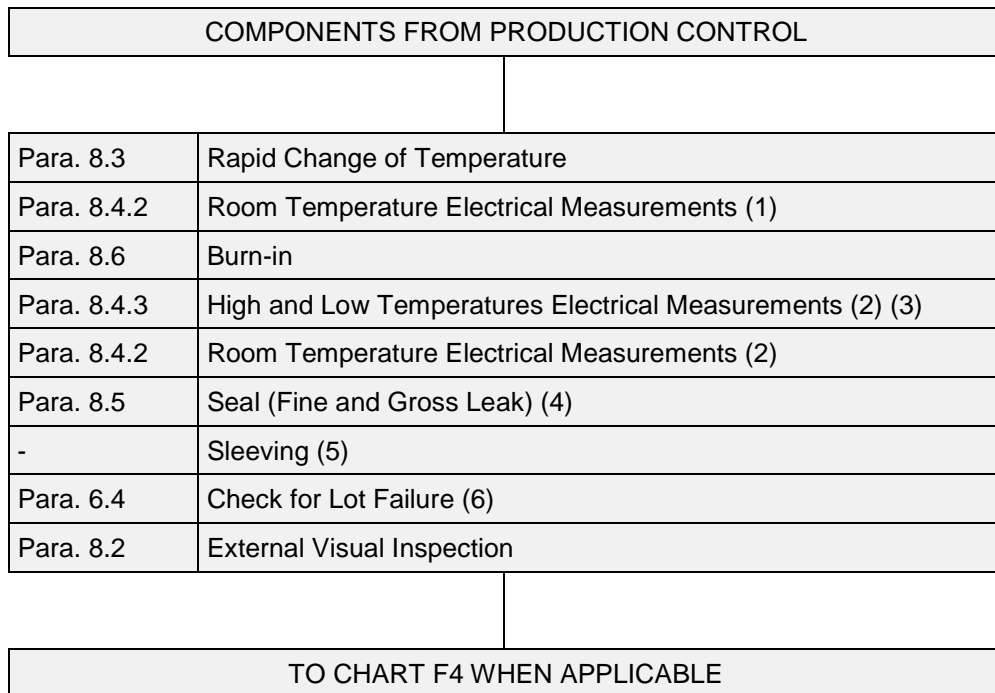
NOTES:

1. Lot Validation Testing is not required for qualified components unless specifically stipulated in the Purchase Order.
2. For unqualified components the need for Lot Validation Testing shall be determined by the Orderer and the required testing shall be as stipulated in the Purchase Order (ref. ESCC Basic Specification No. [23100](#)).

12.2 CHART F2 – PRODUCTION CONTROL**NOTES:**

1. Performed on a sample basis.
2. Guaranteed but not tested.

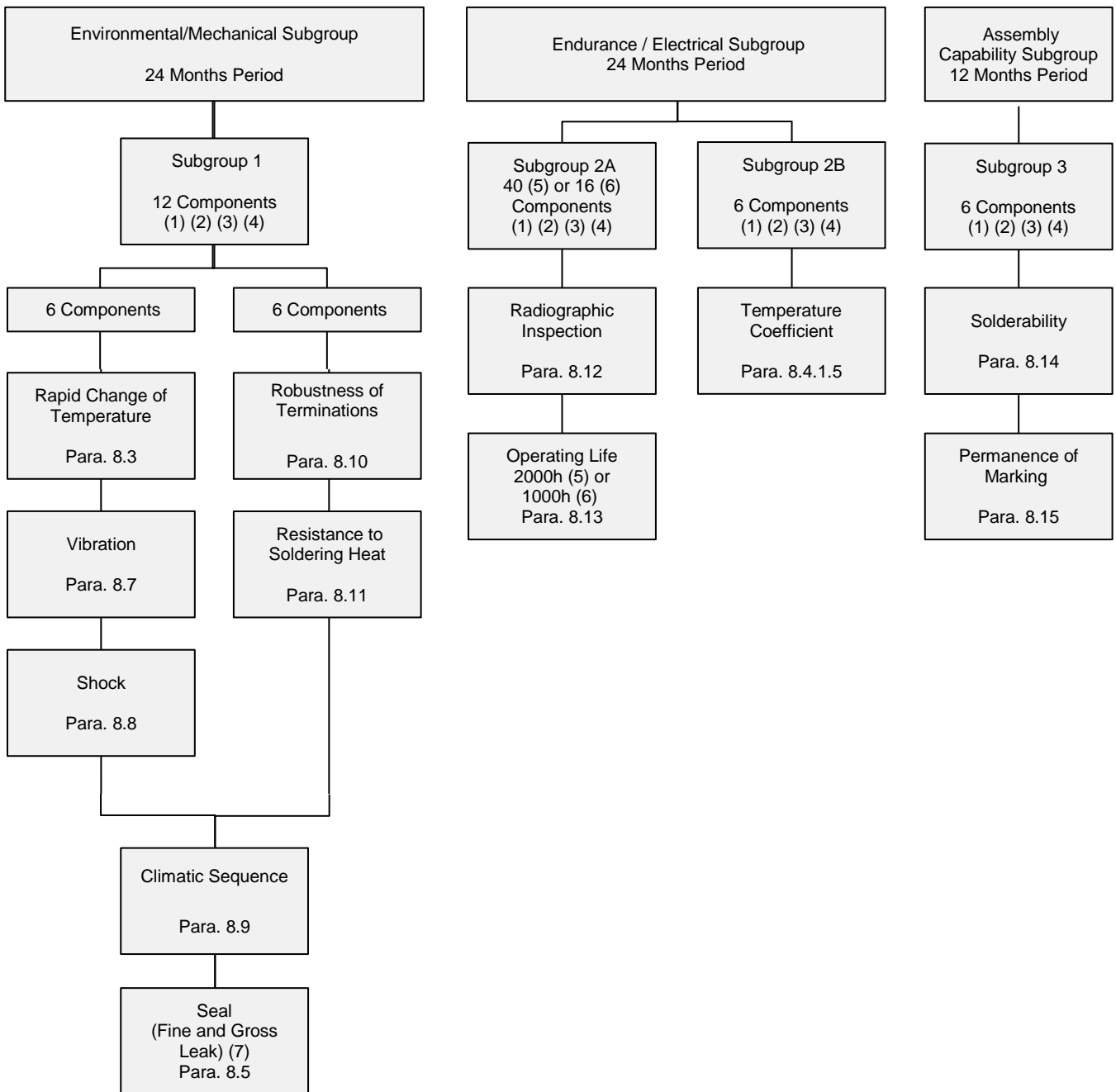
12.3 CHART F3 – SCREENING TESTS



NOTES:

1. Optional at the Manufacturer's discretion.
2. The lot failure criteria of Para. 6.4 apply to this test.
3. Performed on a sample basis.
4. Applicable to hermetically sealed components.
5. If specified in the Detail Specification.
6. Check for Lot Failure shall take into account all electrical parameter failures that may occur during Screening Tests in accordance with Para. 8.4.2 and 8.4.3 subsequent to Burn-in.

12.4 CHART F4 – QUALIFICATION, PERIODIC TESTING AND LOT VALIDATION TESTING



NOTES:

1. For distribution within the subgroups, see Para. 7.1.2 for Qualification Testing and Periodic Testing, and Para. 7.4 for Lot Validation Testing.
For qualification and qualification maintenance, the minimum quantity of components per test vehicle selected for the Qualification Test Lot shall be as follows:
 - Subgroup 1A: 3 components
 - Subgroup 1B: 3 components
 - Subgroup 2A: 10 components
 - Subgroup 2B: 3 components
 - Subgroup 3: 3 components
2. All components shall be serialised prior to testing.
3. No failures are permitted.

4. Surface mount components may be mounted prior to testing, on a suitable substrate, in accordance with IEC Publication No. 60384-1, Clause 4.33.
5. Applicable to Qualification Testing, and to Periodic Testing for renewal of qualification after lapse.
6. Applicable to Periodic Testing for extension of qualification.
7. Applicable to hermetically sealed components.