



Page 1 of 29

**CONNECTORS, ELECTRICAL, RECTANGULAR,
REMOVABLE CRIMP CONTACTS**

BASED ON TYPE D*MA

ESCC Detail Specification No. 3401/002

Issue 17	February 2025
----------	---------------



Document Custodian: European Space Agency – see <https://escies.org>

LEGAL DISCLAIMER AND COPYRIGHT

European Space Agency, Copyright © 2026, All rights reserved.

The European Space Agency disclaims any liability or responsibility, to any person or entity, with respect to any loss or damage caused, or alleged to be caused, directly or indirectly by the use and application of this ESCC publication.

This publication, without the prior permission of the European Space Agency and provided that it is not used for a commercial purpose, may be:

- copied in whole, in any medium, without alteration or modification.
- copied in part, in any medium, provided that the ESCC document identification, comprising the ESCC symbol, document number and document issue, is removed.

DOCUMENTATION CHANGE NOTICE

(Refer to <https://escies.org> for ESCC DCR content)

DCR No.	CHANGE DESCRIPTION
1781	Specification upissued to incorporate changes per DCR.

TABLE OF CONTENTS

1	GENERAL	6
1.1	SCOPE	6
1.2	COMPONENT TYPE VARIANTS	6
1.3	MAXIMUM RATINGS	6
1.4	PARAMETER DERATING INFORMATION	6
1.5	PHYSICAL DIMENSIONS	6
2	APPLICABLE DOCUMENTS	7
3	TERMS, DEFINITIONS, ABBREVIATIONS, SYMBOLS AND UNITS	7
4	REQUIREMENTS	18
4.1	GENERAL	18
4.2	DEVIATIONS FROM GENERIC SPECIFICATION	18
4.2.1	Deviations from Special In-process Controls	18
4.2.2	Deviations from Final Production Tests - Chart II	18
4.2.3	Deviations from Burn-in and Electrical Measurements - Chart III	18
4.2.4	Deviations from Qualification Tests - Chart IV	18
4.2.5	Deviations from Lot Acceptance Tests - Chart V	18
4.3	MECHANICAL REQUIREMENTS	18
4.3.1	Dimension Check	18
4.3.2	Weight	18
4.3.3	Contact Capability	18
4.3.4	Contact Retention (In Insert)	18
4.3.5	Mating and Unmating Forces	19
4.3.6	Insert Retention (In Shell)	19
4.3.7	Jackscrew Retention	19
4.3.8	Contact Insertion and Withdrawal Forces	19
4.3.9	Engagement and Separation Forces	19
4.3.10	Oversize Pin Exclusion	19
4.3.11	Probe Damage	19
4.3.12	Solderability	19
4.4	MATERIALS AND FINISHES	19
4.4.1	Shells	19
4.4.2	Inserts	19
4.4.3	Contacts	19
4.4.4	Contact Retaining Clip	19
4.4.5	Guiding and Locking Devices	19
4.4.6	Magnetism Level	20

4.5	MARKING	20
4.5.1	General	20
4.5.2	The ESCC Component Number	20
4.5.3	Traceability Information	22
4.6	ELECTRICAL MEASUREMENTS	22
4.6.1	Electrical Measurements at Room Temperature	22
4.6.2	Electrical Measurements at High and Low Temperatures (Table 3)	22
4.6.3	Circuits for Electrical Measurements (Figure 4)	22
4.7	BURN-IN AND ELECTRICAL MEASUREMENTS (TABLES 4 AND 5)	22
4.8	ENVIRONMENTAL AND ENDURANCE TESTS	23
4.8.1	Measurements and Inspections on Completion of Environmental Tests	23
4.8.2	Measurements and Inspections at Intermediate Points during Endurance Tests	23
4.8.3	Measurements and Inspections on Completion of Endurance Tests	23
4.8.4	Conditions for Operating Life Test (Part of Endurance Testing)	23
4.8.5	Electrical Circuits for Operating Life Test	23
4.8.6	Conditions for High Temperature Storage Test (Part of Endurance Testing)	23
APPENDIX A		27
APPENDIX B		28
APPENDIX C		29

1 GENERAL

1.1 SCOPE

This specification details the ratings, physical and electrical characteristics, test and inspection data for Connectors, Electrical, Rectangular with Removable Crimp Contacts, Standard (Gauge 20) and High Density (Gauge 22) Contact Arrangements, based on Type D*MA.

It shall be read in conjunction with:

- ESCC Generic Specification No. [3401](#), Connectors, Electrical, Non-Filtered, Circular and Rectangular.
- ESCC Detail Specification No. [3401/005](#), Contacts, Electrical, Crimp, for [3401/002](#) Connectors.
- ESCC Detail Specification No. [3401/022](#), Accessories for Rectangular Connectors [3401/001](#), [3401/002](#) and Connector Savers [3401/020](#), [3401/080](#).
- ESCC Detail Specification No. [3401/072](#), Lightweight Accessories for Rectangular Connectors [3401/001](#) and [3401/002](#).
- ESCC Detail Specification No. [3401/085](#), Fast-Locking Screw Lock Assemblies for Rectangular Connectors [3401/001](#), [3401/002](#) and Connector Savers [3401/020](#), [3401/080](#).

the requirements of which are supplemented herein.

1.2 COMPONENT TYPE VARIANTS

The different sizes of connectors specified herein, which are also covered by this specification, together with their mechanical characteristics, are given in Table 1(a).

1.3 MAXIMUM RATINGS

The maximum ratings, which shall not be exceeded at any time during use or storage, applicable to the connectors specified herein, are scheduled in Table 1(b).

1.4 PARAMETER DERATING INFORMATION

The applicable derating information for the connectors specified herein is shown in Figure 1.

1.5 PHYSICAL DIMENSIONS

The physical dimensions of the connectors specified herein are shown in Figure 2.

2 **APPLICABLE DOCUMENTS**

The following documents form part of this specification and shall be read in conjunction with it:

- (a) ESCC Generic Specification No. 3401 for Connectors, Electrical, Non-Filtered, Circular and Rectangular.
- (b) ESCC Detail Specification No. [3401/005](#), Contacts, Electrical, Crimp, for [3401/002](#) Connectors.
- (c) ESCC Detail Specification No. [3401/022](#), Accessories for Rectangular Connectors [3401/001](#), [3401/002](#) and Connector Savers [3401/020](#), [3401/080](#).
- (d) ESCC Detail Specification No. [3401/072](#), Lightweight Accessories for Rectangular Connectors [3401/001](#) and [3401/002](#).
- (e) ESCC Detail Specification No. [3401/085](#), Fast-Locking Screw Lock Assemblies for Rectangular Connectors [3401/001](#), [3401/002](#) and Connector Savers [3401/020](#), [3401/080](#).
- (f) [MIL-DTL-24308](#), Rack and Panel Connectors, Miniature.

3 **TERMS, DEFINITIONS, ABBREVIATIONS, SYMBOLS AND UNITS**

For the purpose of this specification, the terms, definitions, abbreviations, symbols and units specified in ESCC Basic Specification No. [21300](#) shall apply.

TABLE 1(a) – TYPE VARIANTS

Variant	Shell Size (1)	Max. Weight (g) (2)		Max Weight With Grommet (g) (3)		Mating Force (N max) (4)	Unmating Force (4)	
		Male	Female	Male	Female		N min	N max
01 (Gauge 20 Contacts)	E	5.5	6	6.5	7	30	3.5	20
	A	7.6	8.3	9	9.7	50	4.5	34
	B	12.5	13.6	14.6	15.7	83	8	55
	C	17.4	18.9	20.4	21.9	123	11	83
	D	20.5	22.3	24	25.8	166	14.5	120
02 (Gauge 22 Contacts)	E	5.2	6	6.15	6.95	46	3.4	28
	A	7.4	8	8.7	9.3	77	4.5	46
	B	11	12	13	14	127	7.9	77
	C	15.6	17	18.35	19.75	177	11.3	109
	D	18.2	20	21.6	23.4	222	14.7	136
	F	23	25	-	-	295	20.3	177

NOTES:

1. See Figure 2(b).
2. For connectors without contacts and without rear grommet, but see Para. 4.5.2.1(i). See ESCC Detail Specification No. [3401/005](#) for contact weights.
3. For connectors with rear grommet, without contacts, but see Para. 4.5.2.1(i). See ESCC Detail Specification No. [3401/005](#) for contact weights.
4. For mating of connectors that include a plug connector (with male contacts) with a dimpled shell (shell sizes E, A, B, C, D only) (see Figure 2(d) and Para. 4.5.2.1(h)), the maximum mating and unmating force shall be increased by 20N.

TABLE 1(b) MAXIMUM RATINGS

No.	Characteristics	Symbol	Maximum Rating		Unit
			Min	Max	
1	Working Voltage (Sea Level)	U_R			
	Variant 01		-	300	Vrms
	Variant 02		-	250	Vrms
2	Operating Temperature Range	T_{op}	-55	+125	°C
3	Storage Temperature Range	T_{stg}	-65	+125	°C

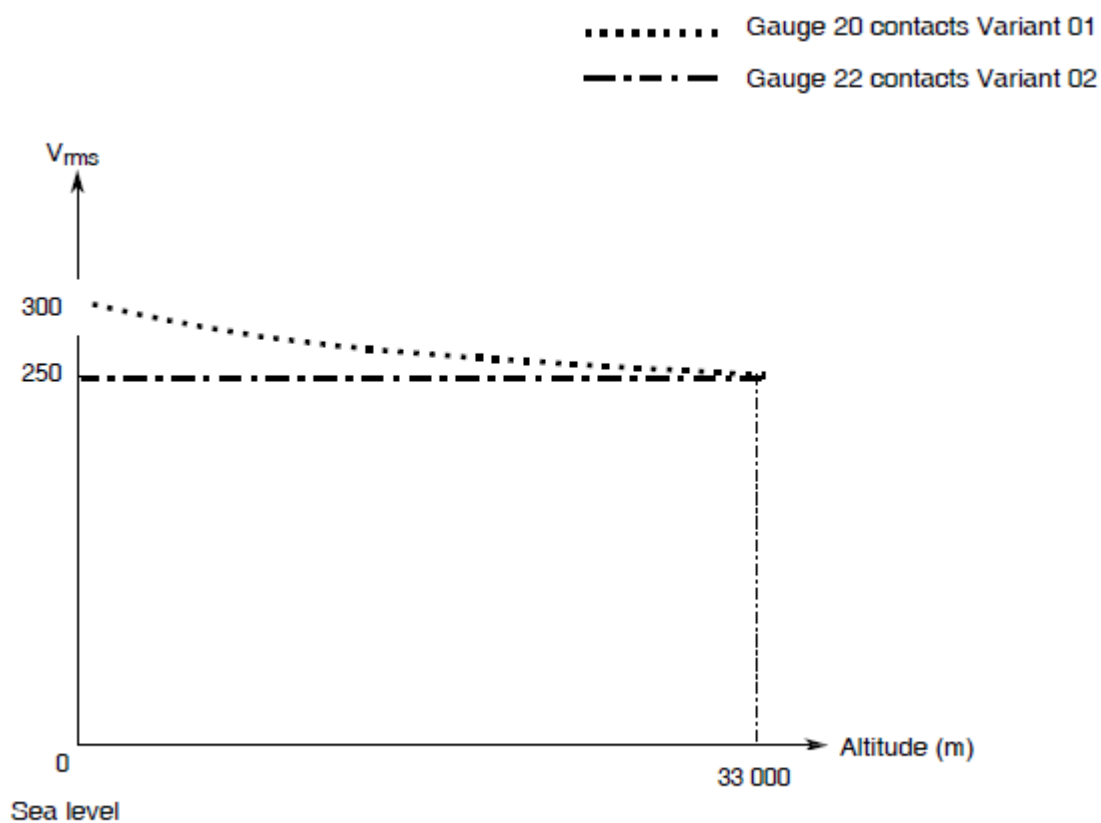
FIGURE 1 - PARAMETER DERATING INFORMATION

Working Voltage versus Altitude

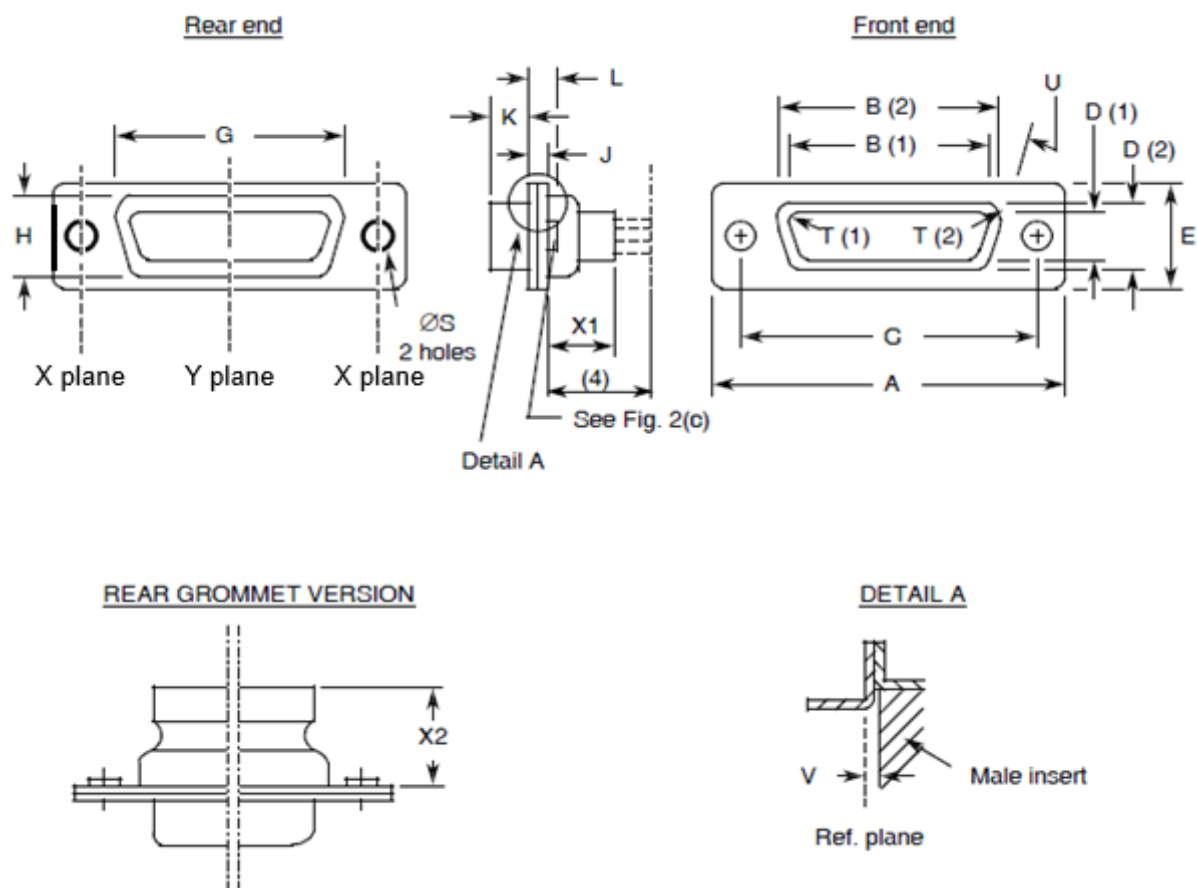
FIGURE 2 – PHYSICAL DIMENSIONS

FIGURE 2(a) - RECEPTACLES AND PLUGS

SHELL SIZE E

STANDARD MOUNTING HOLES

FIXED MOUNT

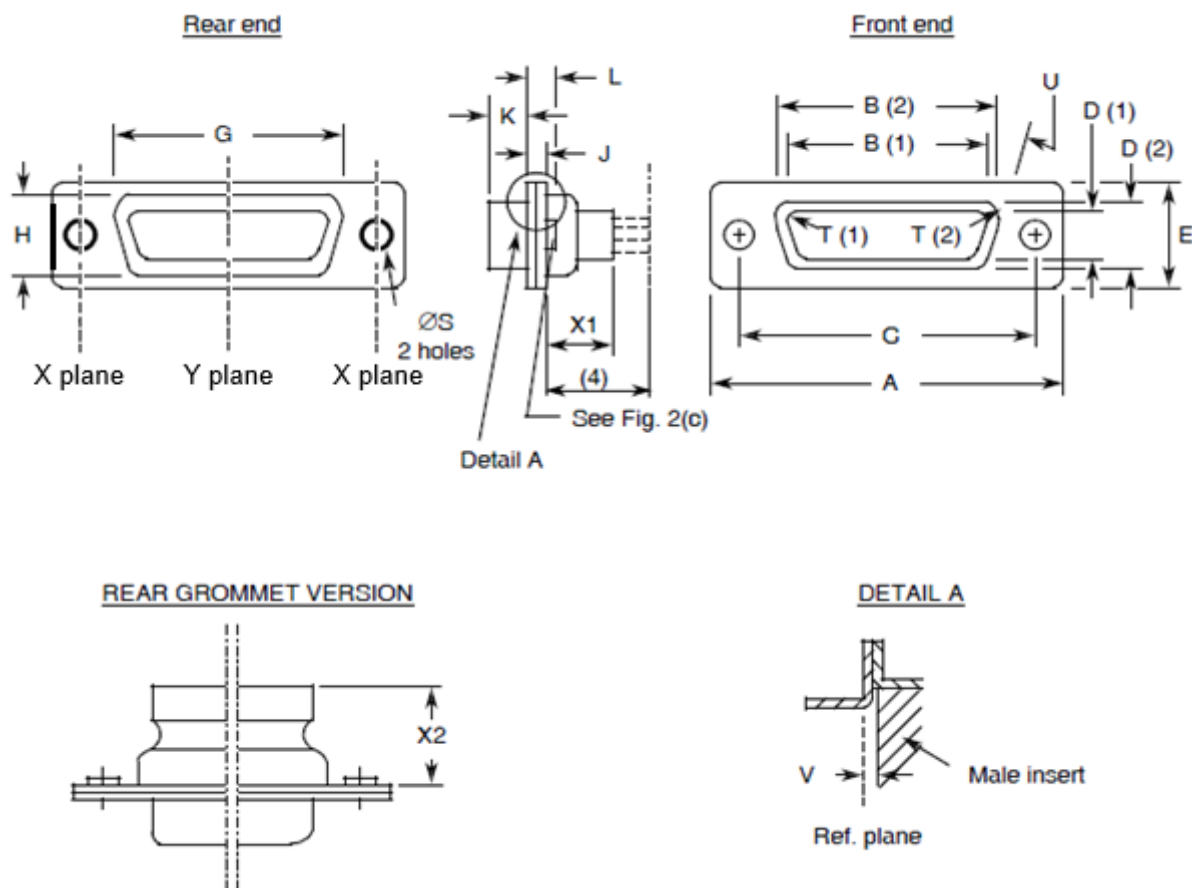


Contact Type	Connector Type	Symbol/ Dim.	A	<u>B</u>	<u>C</u>	<u>D</u>	E	G	H	J	<u>K</u>	L	ØS	<u>T</u>	<u>U</u>	<u>V</u>	X1	X2
Male	Plug	Min	30.43	16.79	24.87	8.23	12.17	19.02	10.46	0.51	5.82	0.89	2.92	2.59	9	0	-	-
		Max	31.19	17.04	25.12	8.48	12.93	19.53	10.97	(6)	6.05	1.52	3.2	2.69	11	0.4	9.53	15.18
Female	Receptacle	Min	30.43	16.21	24.87	7.77	12.07	19.02	10.46	0.51	6.05	0.89	2.92	2.46	9	-	-	-
		Max	31.19	16.46	25.12	8.03	12.93	19.53	10.97	(6)	6.3	1.52	3.2	2.62	11	-	9.53	15.8

NOTES:

1. Inside dimension for connectors with male contacts.
2. Outside dimension for connectors with female contacts.
3. All dimensions are in mm (angles in degrees).
4. Contacts [340100505B](#), [340100506B](#), [340100515B](#) and [340100516B](#) protrude 16.5mm maximum.
5. Underlined dimensions, in table, are critical to ensure intermateability.
6. 1.02 max. when measured in the X planes and 1.25 max. when measured in the Y plane.

SHELL SIZE A
STANDARD MOUNTING HOLES
FIXED MOUNT

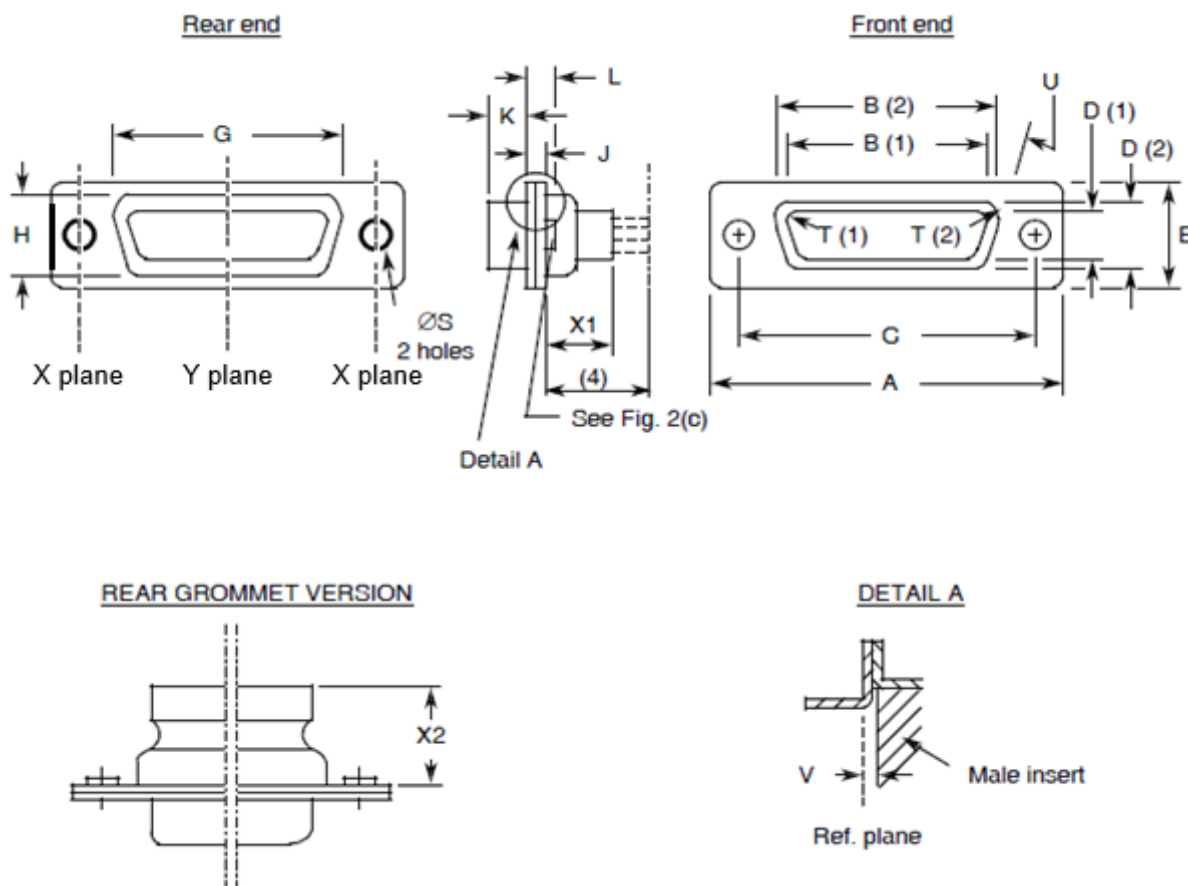


Contact Type	Connector Type	Symbol/Dim.	A	B	C	D	E	G	H	J	K	L	ØS	I	U	V	X1	X2
Male	Plug	Min	38.76	25.12	33.2	8.23	12.17	27.25	10.46	0.51	5.82	0.89	2.92	2.59	9	0	-	-
		Max	39.52	25.37	33.45	8.48	12.93	27.76	10.97	(6)	6.05	1.52	3.2	2.69	11	0.4	9.53	15.18
Female	Receptacle	Min	38.76	24.54	33.2	7.77	12.17	27.25	10.46	0.51	6.05	0.89	2.92	2.46	9	-	-	-
		Max	39.52	24.79	33.45	8.03	12.93	27.76	10.97	(6)	6.3	1.52	3.2	2.62	11	-	9.53	15.18

NOTES:

1. Inside dimension for connectors with male contacts.
2. Outside dimension for connectors with female contacts.
3. All dimensions are in mm (angles in degrees).
4. Contacts [340100505B](#), [340100506B](#), [340100515B](#) and [340100516B](#) protrude 16.5mm maximum.
5. Underlined dimensions, in table, are critical to ensure intermateability.
6. 1.02 max. when measured in the X planes and 1.25 max. when measured in the Y plane.

SHELL SIZE B
STANDARD MOUNTING HOLES
FIXED MOUNT

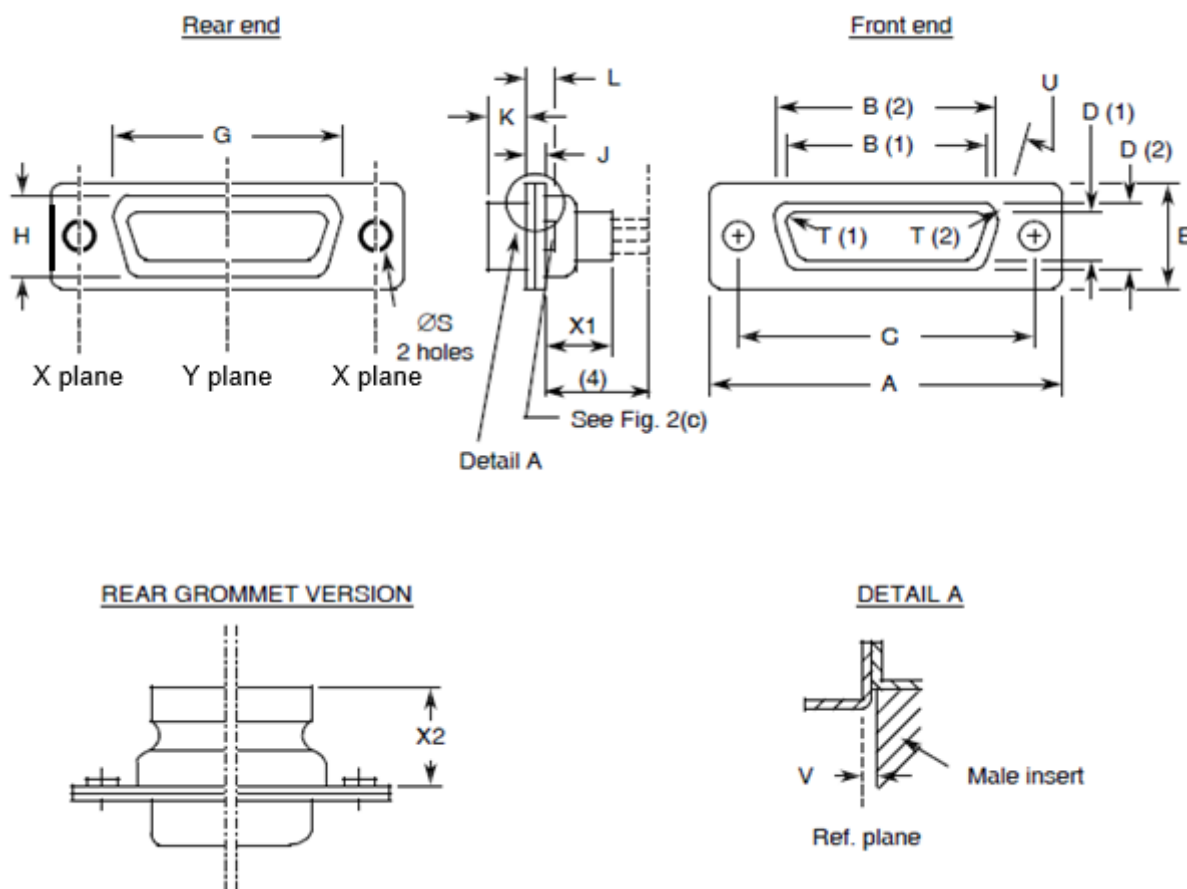


Contact Type	Connector Type	Symbol/ Dim.	A	B	C	D	E	G	H	J	K	L	ØS	I	U	V	X1	X2
Male	Plug	Min	52.65	38.84	46.91	8.23	12.17	41.02	10.46	0.74	5.69	1.05	2.92	2.59	9	0	-	-
		Max	53.42	39.09	47.17	8.48	12.93	41.53	10.97	(6)	5.99	1.78	3.2	2.69	11	0.6	9.53	15.18
Female	Receptacle	Min	52.65	38.25	46.91	7.77	12.17	41.02	10.46	0.51	6.05	0.89	2.92	2.46	9	-	-	-
		Max	53.42	38.51	47.17	8.03	12.93	41.53	10.97	(7)	6.3	1.52	3.2	2.62	11	-	9.53	15.18

NOTES:

1. Inside dimension for connectors with male contacts.
2. Outside dimension for connectors with female contacts.
3. All dimensions are in mm (angles in degrees).
4. Contacts [340100505B](#), [340100506B](#), [340100515B](#) and [340100516B](#) protrude 16.5mm maximum.
5. Underlined dimensions, in table, are critical to ensure intermateability.
6. 1.24 max. when measured in the X planes and 1.45 max. when measured in the Y plane.
7. 1.02 max. when measured in the X planes and 1.25 max. when measured in the Y plane.

SHELL SIZE C
STANDARD MOUNTING HOLES
FIXED MOUNT

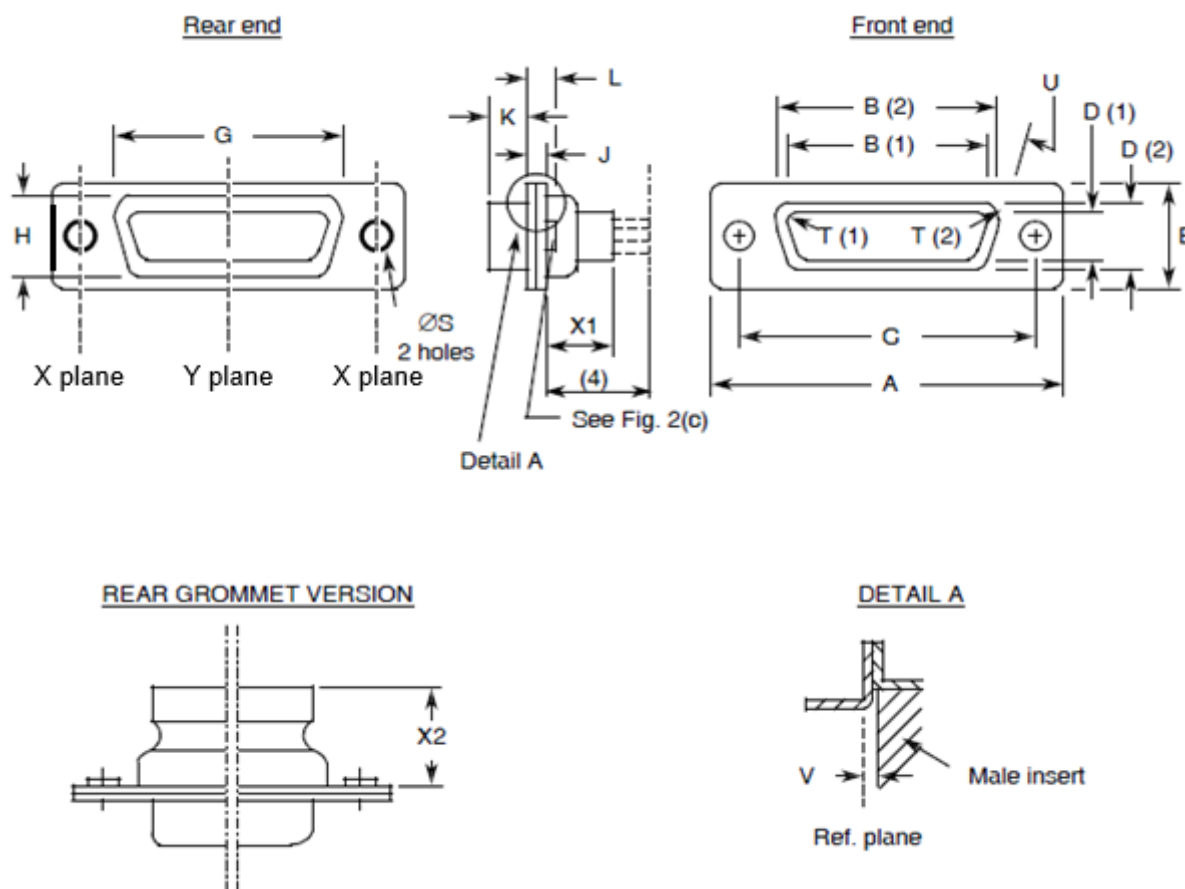


Contact Type	Connector Type	Symbol/Dim.	A	B	C	D	E	G	H	J	K	L	ØS	I	U	V	X1	X2
Male	Plug	Min	68.94	55.3	63.37	8.23	12.17	57.45	10.46	0.74	5.69	1.05	2.92	2.59	9	0	-	-
		Max	69.7	55.55	63.63	8.48	12.93	57.96	10.97	(6)	5.99	1.78	3.2	2.69	11	0.6	9.53	15.18
Female	Receptacle	Min	68.94	54.71	63.37	7.77	12.17	57.45	10.46	0.51	6.05	0.89	2.92	2.46	9	-	-	-
		Max	69.7	54.97	63.63	8.03	12.93	57.96	10.97	(7)	6.3	1.52	3.2	2.62	11	-	9.53	15.18

NOTES:

1. Inside dimension for connectors with male contacts.
2. Outside dimension for connectors with female contacts.
3. All dimensions are in mm (angles in degrees).
4. Contacts [340100505B](#), [340100506B](#), [340100515B](#) and [340100516B](#) protrude 16.5mm maximum.
5. Underlined dimensions, in table, are critical to ensure intermateability.
6. 1.24 max. when measured in the X planes and 1.45 max. when measured in the Y plane.
7. 1.02 max. when measured in the X planes and 1.25 max. when measured in the Y plane.

SHELL SIZE D
STANDARD MOUNTING HOLES
FIXED MOUNT

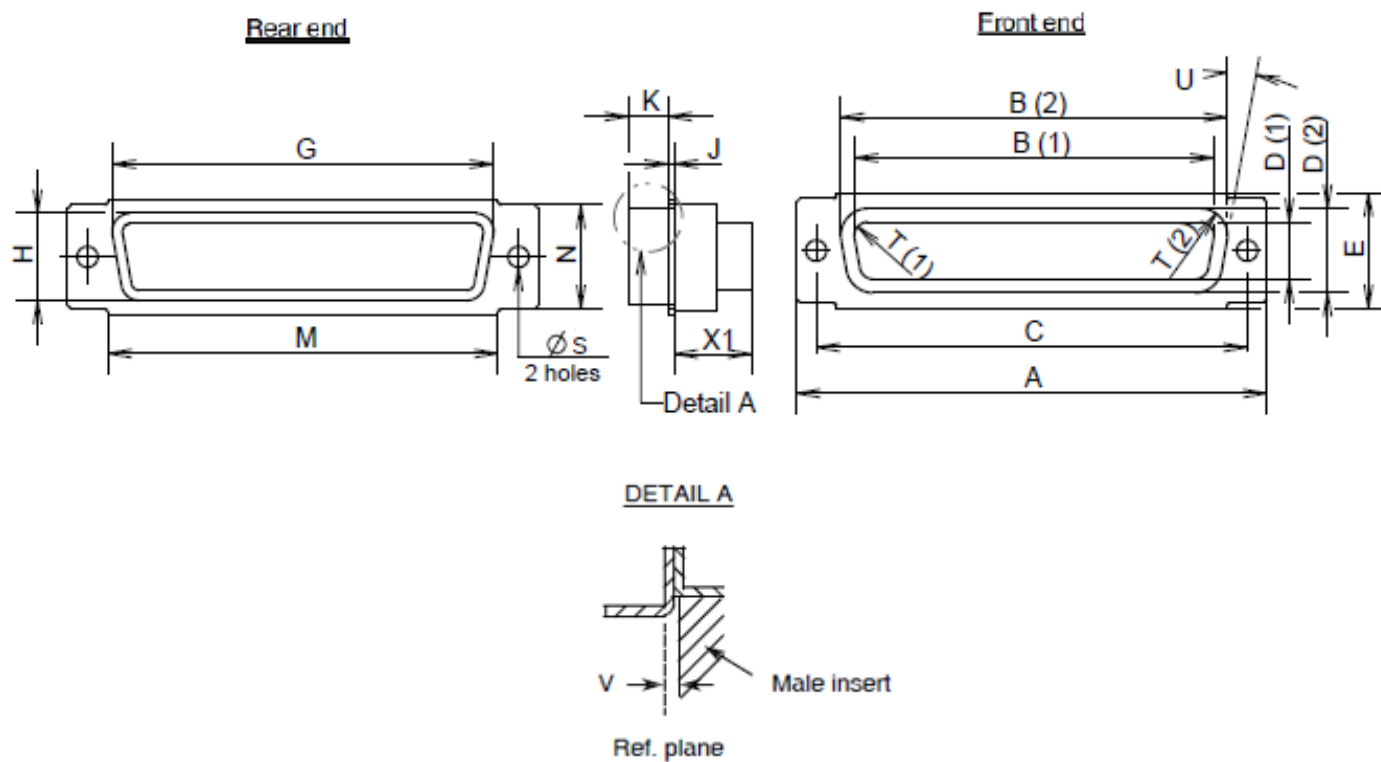


Contact Type	Connector Type	Symbol/Dim.	A	B	C	D	E	G	H	J	K	L	ØS	T	U	V	X1	X2
Male	Plug	Min	66.55	52.68	60.99	11.07	14.99	55.07	13.31	0.74	5.69	1.05	2.92	2.59	9	0	-	-
		Max	67.31	52.93	61.24	11.33	15.75	55.58	13.82	(6)	5.99	1.78	3.2	2.69	11	0.6	9.53	15.18
Female	Receptacle	Min	66.55	52.3	60.99	10.62	14.99	55.07	13.31	0.51	6.05	0.89	2.92	2.46	9	-	-	-
		Max	67.31	52.55	61.24	10.87	15.75	55.58	13.82	(7)	6.3	1.52	3.2	2.62	11	-	9.53	15.18

NOTES:

1. Inside dimension for connectors with male contacts.
2. Outside dimension for connectors with female contacts.
3. All dimensions are in mm (angles in degrees).
4. Contacts [340100505B](#), [340100506B](#), [340100515B](#) and [340100516B](#) protrude 16.5mm maximum.
5. Underlined dimensions, in table, are critical to ensure intermateability.
6. 1.24 max. when measured in the X planes and 1.45 max. when measured in the Y plane.
7. 1.02 max. when measured in the X planes and 1.25 max. when measured in the Y plane.

SHELL SIZE F
STANDARD MOUNTING HOLES
FIXED MOUNT

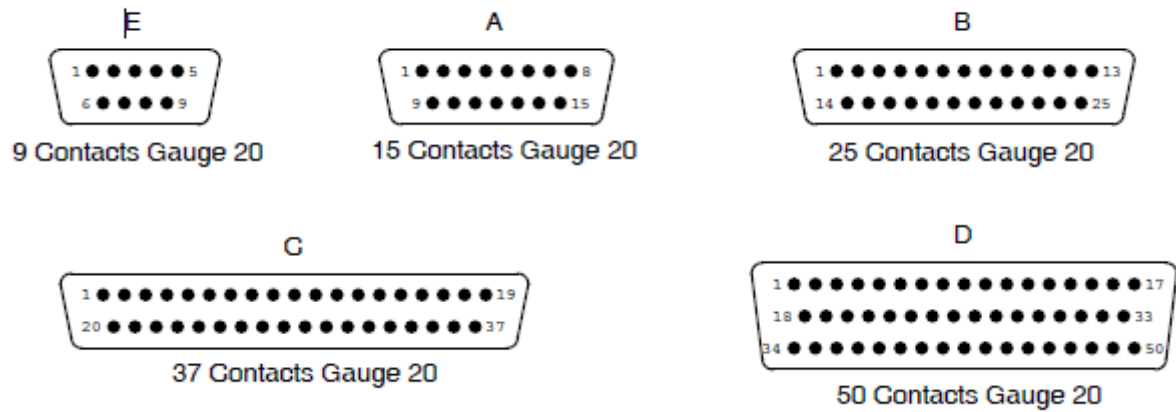


Contact Type	Connector Type	Symbol/ Dim.	<u>A</u>	<u>B</u>	<u>C</u>	<u>D</u>	<u>E</u>	<u>G</u>	<u>H</u>	<u>J</u>	<u>K</u>	<u>M</u>	<u>N</u>	ϕS	<u>I</u>	<u>U</u> °	<u>V</u>	<u>X1</u>
Male	Plug	Min	68.94	56.06	63.37	12.65	16.92	58.75	15.45	0.74	5.69	57.25	15	2.92	2.59	9	0	-
		Max	69.7	56.31	63.63	12.9	17.68	59.25	15.95	1.24	5.99	57.75	15.5	3.2	2.69	11	0.6	9.53
Female	Receptacle	Min	68.94	55.47	63.37	12.19	16.92	58.75	15.45	0.51	6.05	57.25	15	2.92	2.46	9	-	-
		Max	69.7	55.73	63.63	12.45	17.68	59.25	15.95	1.02	6.3	57.75	15.5	3.2	2.62	11	-	9.53

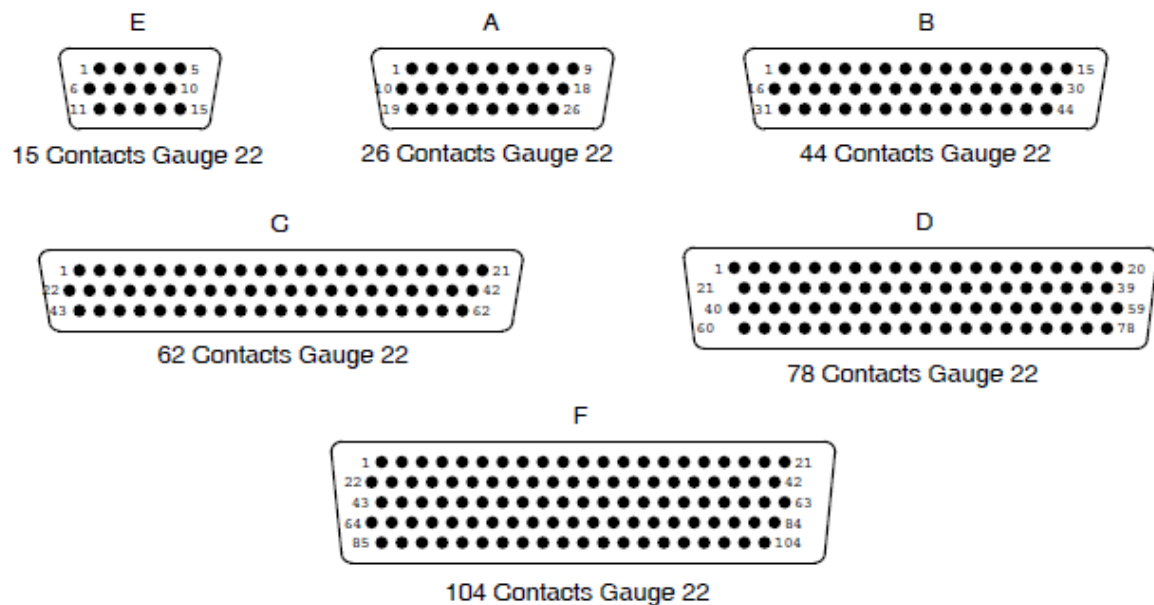
NOTES:

1. Inside dimension for connectors with male contacts.
2. Outside dimension for connectors with female contacts.
3. All dimensions are in mm (angles in degrees).
4. Underlined dimensions, in table, are critical to ensure intermateability.

FIGURE 2(b) - CONTACT ARRANGEMENTS
VARIANT 01 - STANDARD CONTACT ARRANGEMENTS
FRONT VIEW MALE INSERT



VARIANT 02 - HIGH DENSITY CONTACT ARRANGEMENTS
FRONT VIEW MALE INSERT



NOTES:

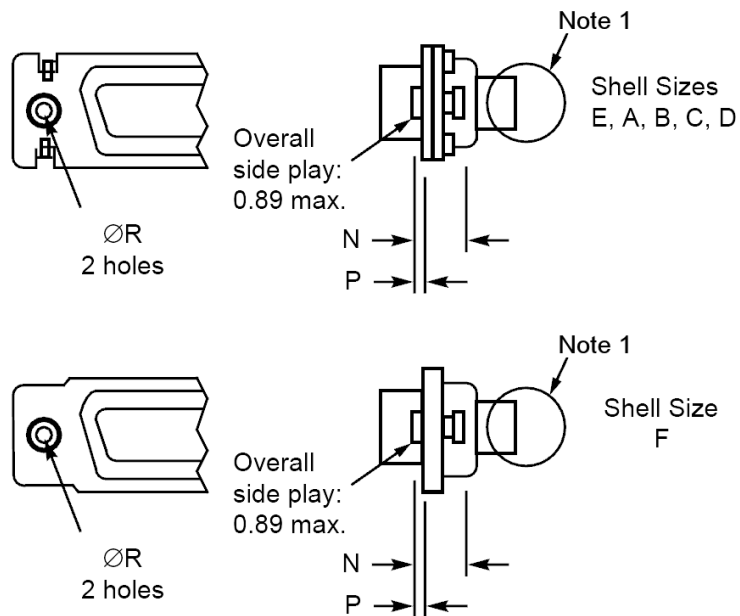
1. Contact locations are in conformity with [MIL-DTL-24308](#) specification sheets and shall not be checked during procurement.
2. Both sides of the insert shall be marked with the minimum marking shown.

FIGURE 2(c) - RECEPTACLES AND PLUGS

OTHER MOUNTING TYPES

FLOATING MOUNT - TYPE Y

SHELL SIZES E, A, B, C, D, F

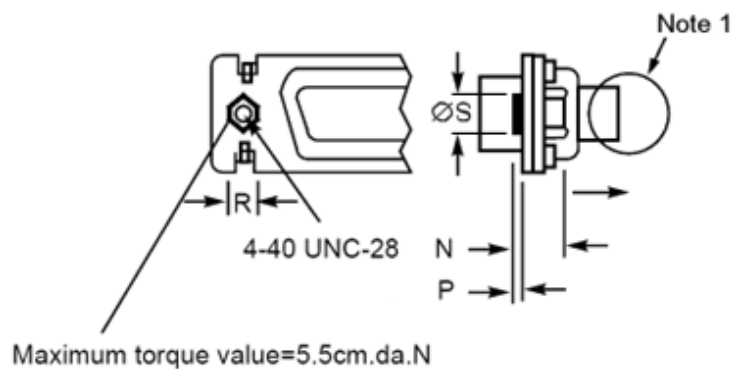


Contact Type	Symbol/ Dim.	N	P	ØR
Male	Min.	2.4	0.76	2.2
	Max.	3.3	0.86	2.3
Female	Min.	2.4	0.76	2.2
	Max.	3.3	0.86	2.3

CAPTIVE NUTS - TYPE E

SHELL SIZES E, A, B, C, D, F

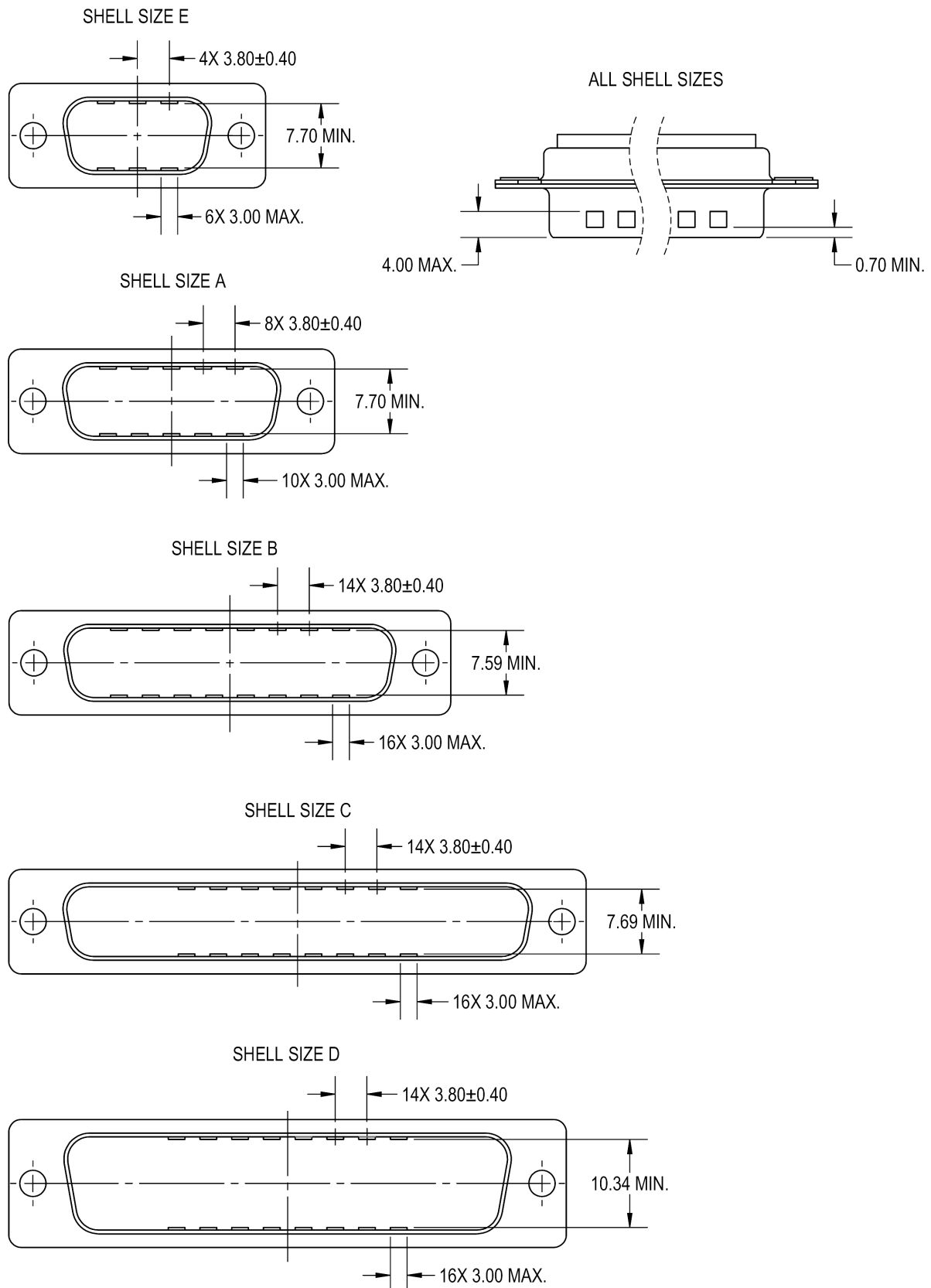
Contact Type	Symbol/ Dim.	N	P	R	ØS
Male	Min.	3.4	0	4.3	-
	Max.	4.2	0.5	4.7	5.2
Female	Min.	3.4	0	4.3	-
	Max.	4.2	0.5	4.7	5.2



NOTES:

- See Figure 2(a) for other dimensions.

FIGURE 2(d) – PLUG CONNECTORS WITH DIMPLED SHELL



NOTES:

1. All dimensions are in mm.

4 REQUIREMENTS

4.1 GENERAL

The complete requirements for procurement of the connectors specified herein are stated in this specification and ESCC Generic Specification No. [3401](#). Deviations from the Generic Specification, applicable to this specification only, are listed in Para. 4.2.

Deviations from the applicable Generic Specification and this Detail Specification, formally agreed with specific Manufacturers on the basis that the alternative requirements are equivalent to the ESCC requirements and do not affect the components' reliability, are listed in the appendices attached to this specification.

4.2 DEVIATIONS FROM GENERIC SPECIFICATION

4.2.1 Deviations from Special In-process Controls

None.

4.2.2 Deviations from Final Production Tests - Chart II

(a) Para. 9.1.1.4, Mated Shell Conductivity: Not applicable.

4.2.3 Deviations from Burn-in and Electrical Measurements - Chart III

Not applicable.

4.2.4 Deviations from Qualification Tests - Chart IV

(a) Para. 9.1.1.4, Mated Shell Conductivity: Not applicable.

(b) Para. 9.9, Seal Test: Not applicable.

(c) Para. 9.24, Jackscrew Retention: Not applicable.

4.2.5 Deviations from Lot Acceptance Tests - Chart V

(a) Para. 9.1.1.4, Mated Shell Conductivity: Not applicable.

(b) Para. 9.9, Seal Test: Not applicable.

4.3 MECHANICAL REQUIREMENTS

4.3.1 Dimension Check

The dimensions of the connectors specified herein shall be verified in accordance with the requirements set out in Para. 9.6 of ESCC Generic Specification [3401](#) and shall conform to those shown in Figure 2 of this specification. Only the underlined dimensions shall be checked during procurement.

4.3.2 Weight

The maximum weight of the connectors specified herein, without contacts, shall be as specified in Table 1(a).

4.3.3 Contact Capability

As specified in ESCC Detail Specification No. [3401/005](#).

4.3.4 Contact Retention (In Insert)

As specified in ESCC Detail Specification No. [3401/005](#).

4.3.5 Mating and Unmating Forces

The forces applied for mating and unmating of the connectors shall conform to the values specified in Table 1(a).

4.3.6 Insert Retention (In Shell)

Connector inserts shall withstand a pressure of 42.8N/cm² without being dislodged from the shell.

4.3.7 Jackscrew Retention

Not applicable.

4.3.8 Contact Insertion and Withdrawal Forces

As specified in ESCC Detail Specification No. [3401/005](#).

4.3.9 Engagement and Separation Forces

As specified in ESCC Detail Specification No. [3401/005](#).

4.3.10 Oversize Pin Exclusion

As specified in ESCC Detail Specification No. [3401/005](#).

4.3.11 Probe Damage

As specified in ESCC Detail Specification No. [3401/005](#).

4.3.12 Solderability

As specified in ESCC Detail Specification No. [3401/005](#).

4.4 MATERIALS AND FINISHES

The materials and finishes shall be as specified herein. Where a definite material is not specified, a material which will enable the connectors specified herein to meet the performance requirements of this specification shall be used. Acceptance or approval of any constituent material does not guarantee acceptance of the finished product.

4.4.1 Shells

Shells of shell sizes E, A, B, C, D shall be made of brass. The standard plating finish (i.e. no Modification Code) shall be 0.7µm minimum of gold over 1µm minimum of copper. An alternative plating finish is 12.7µm minimum electroless nickel (Modification Code A175).

Shells of shell size F shall be made of aluminium alloy. The plating finish shall be either 25.4µm minimum of electroless nickel (Modification Code A174) or 0.7µm minimum of gold with 25.4µm minimum electroless nickel underplating (Modification Code FR172).

4.4.2 Inserts

Inserts shall be made of glass-fibre filled diallylphthalate resin or a suitable thermoplastic material. The rear grommet shall be made of silicone elastomer.

4.4.3 Contacts

As specified in ESCC Detail Specification No. [3401/005](#).

4.4.4 Contact Retaining Clip

The retaining clip shall be made of beryllium copper.

4.4.5 Guiding and Locking Devices

As specified in ESCC Detail Specification Nos. [3401/022](#), [3401/072](#) and [3401/085](#)

4.4.6 Magnetism Level

The allowable value of magnetism shall not exceed that specified for the relevant level (see Para. 4.5.2.1(g)). Only magnetism levels NMC and NMD are verified.

4.5 MARKING

4.5.1 General

The marking of all components delivered to this specification shall be in accordance with the requirements of ESCC Basic Specification No. 21700 and the following paragraphs.

Each component and/or the component's primary package shall be marked in respect of:

- (a) Contact number marking (see Figure 2(b)).
- (b) The ESCC qualified components symbol (for ESCC qualified components only).
- (c) The ESCC Component Number (see Para. 4.5.2).
- (d) Traceability information.

4.5.2 The ESCC Component Number

The ESCC Component Number shall be constituted as follows (note 1):

Example: 340100201BDAMAY15PNMBA175DFO

- Detail Specification Reference: 3401002
- Component Type Variant Number: 01 (as required; see Table 1(a))
- Testing Level: B
- Characteristic code: Series: D
- Characteristic code: Shell Size: A (as required)
- Characteristic code: Insert Type: MA
- Characteristic code: Alternative Design: Y (as required)
- Characteristic code: Contact Arrangement: 15 (as required)
- Characteristic code: Contact Gender: P (as required)
- Characteristic code: Magnetism Level: NMB (as required)
- Characteristic code: Modification Code(s): A175D (if/as required)
- Characteristic code: Contact Information: FO

NOTES:

1. A dash (-) or space may be included as part of the ESCC Component Number marking in order to separate one or more of the individual characteristic codes.

4.5.2.1 Characteristics Codes

Characteristics to be codified as part of the ESCC Component Number shall be as follows:

- (a) **Series**
The connector series shall be indicated by the code letter: D.
- (b) **Shell Size**
The shell size shall be indicated by the following code letters: E, A, B, C, D, F. See Table 1(a).
- (c) **Insert Type**
The type of insert shall be indicated by the code letters: MA
- (d) **Alternative Design**
Alternative design shall be indicated by the following code letters:
 - E: captive nuts; see Figure 2(c) (see note)
 - Y: floating mount; see Figure 2(c) (see note)
 - G: rear dust proof grommet; see Figure 2(a) (with standard mounting holes)
 - YG: floating mount and rear dust proof grommet; see Figures 2(a) and 2(c)

NOTE:

If the shell has standard mounting holes, this code letter shall be omitted.

- (e) **Contact Arrangement**
The contact arrangement shall be indicated by the following codes; see Figure 2(b):

Code	Shell Size	Number of Contacts Gauge 20	Number of Contacts Gauge 22
9	E	9	N/A
15	A	15	N/A
15	E	N/A	15
25	B	25	N/A
26	A	N/A	26
37	C	37	N/A
44	B	N/A	44
50	D	50	N/A
62	C	N/A	62
78	D	N/A	78
104	F	N/A	104

- (f) **Contact Gender**
The gender of the contacts shall be indicated by the following code letters:
 - P: male contact
 - S: female contact

- (g) Magnetism Level
The magnetism level shall be indicated by the following codes:

Code	Definition
NMB	Magnetism Level: ≤ 200 gamma (1)
NMC	Magnetism Level: ≤ 20 gamma
NMD	Magnetism Level: ≤ 2 gamma

NOTES:

1. Guaranteed, but not measured.

- (h) Modification Code
A modification code shall be included in the ESCC Component Number when required, otherwise it shall be omitted. When more than a single code is applicable, all codes shall be concatenated together.

Finish codes: the following modification codes shall apply when required (see Para. 4.4.1):

- A175: electroless nickel finish for shell sizes E, A, B, C, D only.
- A174: electroless nickel finish for shell size F only.
- FR172: gold over electroless nickel finish for shell size F only.

Other codes: the following modification codes shall apply when required:

- D: plug connector (with male contacts) with dimpled shell (see Figure 2(d))

- (i) Contact Information
These connectors shall be ordered without contacts as indicated by the code FO.

This code shall not be marked on the component but shall be marked on the component's primary package.

NOTE: Contacts must be from the same Manufacturer as the connector in which they are mounted and this shall be verified prior to assembly.

4.5.3 Traceability Information

Traceability information shall be marked in accordance with the requirements of ESCC Basic Specification No. 21700.

4.6 ELECTRICAL MEASUREMENTS

4.6.1 Electrical Measurements at Room Temperature

The parameters to be measured in respect of electrical characteristics are scheduled in Table 2. Unless otherwise specified, these measurements shall be performed at $T_{amb} = +22 \pm 3^{\circ}\text{C}$.

4.6.2 Electrical Measurements at High and Low Temperatures (Table 3)

Not applicable.

4.6.3 Circuits for Electrical Measurements (Figure 4)

Not applicable.

4.7 BURN-IN AND ELECTRICAL MEASUREMENTS (TABLES 4 AND 5)

Not applicable.

4.8 ENVIRONMENTAL AND ENDURANCE TESTS

4.8.1 Measurements and Inspections on Completion of Environmental Tests

The parameters to be measured and inspections to be performed on completion of environmental testing shall be those specified in Table 6. Unless otherwise specified, the measurements shall be performed at $T_{amb} = +22 \pm 3^{\circ}\text{C}$.

4.8.2 Measurements and Inspections at Intermediate Points during Endurance Tests

Not applicable.

4.8.3 Measurements and Inspections on Completion of Endurance Tests

The parameters to be measured and inspections to be performed on completion of endurance tests shall be those specified in Table 6. Unless otherwise specified, the measurements shall be performed at $T_{amb} = +22 \pm 3^{\circ}\text{C}$.

4.8.4 Conditions for Operating Life Test (Part of Endurance Testing)

Not applicable.

4.8.5 Electrical Circuits for Operating Life Test

Not applicable.

4.8.6 Conditions for High Temperature Storage Test (Part of Endurance Testing)

The requirements for the high temperature storage test are specified in Section 9 of ESCC Generic Specification No. 3401. The conditions for high temperature storage testing shall be the maximum storage temperature specified in Table 1(b) of this specification.

TABLE 2 – ELECTRICAL MEASUREMENTS AT ROOM TEMPERATURE

No.	Characteristic	Symbol	Specification and Test Method	Test Condition	Limits		Unit
					Min	Max	
1	Insulation Resistance	Ri	ESCC 3401 Para. 9.1.1.1	Para. 9.1.1.1	5000	-	MΩ
2	Voltage Proof Leakage Current Variant 01 Variant 02	I _L	ESCC 3401 Para. 9.1.1.2	1250Vrms (1) 1000Vrms	- -	2 2	mA
3	Mated Shell Conductivity (Voltage Drop) (2)	Vd	ESCC 3401 Para. 9.1.1.4	Para. 9.1.1.3	Not applicable		mV

NOTES:

- When connectors are equipped with 340100505B and 340100506B contacts, each crimp barrel shall be isolated from adjacent contacts with insulation material.
- Applicable to mated connectors with grounding option.

TABLES 3, 4 AND 5

Not applicable.

TABLE 6 – MEASUREMENTS AND INSPECTIONS ON COMPLETION OF ENVIRONMENTAL AND ENDURANCE TESTING

No.	ESCC Generic Spec. No. 3401		Measurements and Inspections		Symbol	Limits		Unit
	Environmental and Endurance Tests (1)	Test Method and Conditions	Identification	Conditions		Min	Max	
01	Wiring	Para. 9.10	ESCC 3401/005	-	-	-	-	
02	Vibration	Para. 9.11	Initial Measurements Coupling Screw(s) Unlocking Torque	-	-	Record Values		%
			Final Measurements Coupling Screw(s) Unlocking Torque Drift Visual Examination	Full Engagement - -	Δ - -	-25 - -	+25 - -	
03	Shock or Bump	Para. 9.12	Final Measurements Visual Examination	Full Engagement -	- -	- -	- -	
04	Climatic Sequence	Para. 9.13	Dry Heat Insulation Resistance	Table 2 Item 1	Ri	1000	-	MΩ
			Low Air Pressure Voltage Proof Leakage Current	Figure 1	I _L	Table 2 Item 2		
			Damp Heat Insulation Resistance	Immediately after test Table 2 Item 1	Ri	100	-	MΩ
				After 1 - 24hrs Recovery ESCC 3401 Para. 9.7	-	ESCC 3401 Para. 9.7		
			External Visual Inspection	Table 2 Item 1	Ri	Table 2 Item 1		
			Insulation Resistance Voltage Proof Leakage Current	Table 2 Item 2	I _L	Table 2 Item 2		
05	Seal Test	Para. 9.9	ESCC 3401 Para. 9.9			Not applicable		
06	Plating Thickness	Para. 9.14	Thickness	-	-	ESCC 3401/005		
07	Joint Strength	Para. 9.15	ESCC 3401 Para. 9.15	-	-	ESCC 3401 Para. 9.15		
08	Rapid Change of Temperature	Para. 9.16	Visual Examination	-	-	-	-	
			Insulation Resistance	Table 2 Item 1	Ri	Table 2 Item 1		
			Voltage Proof Leakage Current	Table 2 Item 2	I _L	Table 2 Item 2		
09	Contact Retention (In Insert)	Para. 9.17 & Para. 4.3.4 of this spec	Contact Displacement	-	-	ESCC 3401 Para. 9.17		

No.	ESCC Generic Spec. No. 3401		Measurements and Inspections		Symbol	Limits		Unit
	Environmental and Endurance Tests (1)	Test Method and Conditions	Identification	Conditions		Min	Max	
10	Endurance	Para. 9.18	Initial Measurements Mating/Unmating Forces Low Level Contact Resistance Mated Shell Conductivity Final Measurements Visual Examination Mating/Unmating Forces Low Level Contact Resistance Drift Mated Shell Conductivity Insulation Resistance Voltage Proof Leakage Current	- ESCC 3401/005 Table 2 Item 3 - - ESCC 3401/005 Table 2 Item 3 Table 2 Item 1 Table 2 Item 2	F Rcl Vd - F ΔRcl Vd Ri IL	Para. 4.3.5 of this spec. Record Values Not applicable - - Para. 4.3.5 of this spec. ESCC 3401/005 Not applicable Table 2 Item 1 Table 2 Item 2		
11	Permanence of Marking	Para. 9.19	As applicable	-	-	-	-	
12	Mating Unmating Forces	Para. 9.20	Force	-	F	Para. 4.3.5 of this spec.		
13	High Temperature Storage	Para. 9.21	Initial Measurements Low Level Contact Resistance Mated Shell Conductivity Final Measurements Visual Examination Mating/Unmating Forces Low Level Contact Resistance Drift Rated Current Contact Resistance Mated Shell Conductivity Insulation Resistance Voltage Proof Leakage Current Contact Retention (In Insert)	ESCC 3401/005 Table 2 Item 3 - - ESCC 3401/005 ESCC 3401/005 Table 2 Item 3 Table 2 Item 1 Table 2 Item 2 Para. 4.3.4 of this spec.	Rcl Vd - F ΔRcl Rcr Vd Ri IL -	Record Values Not applicable - - Para. 4.3.5 of this spec. ESCC 3401/005 ESCC 3401/005 Not applicable Table 2 Item 1 Table 2 Item 2 ESCC 3401 Para. 9.17		
14	Corrosion	Para. 9.22	Visual Examination	-	-	-	-	
15	Insert Retention (In Shell)	Para. 9.23 & Para. 4.3.6 of this spec.	Visual Examination	-	-	Para. 4.3.6		
16	Jackscrew Retention	Para. 9.24 & Para. 4.3.7 of this spec.	Visual Examination	-	-	Not applicable		
17	High Temperature Measurements	Para. 9.25	Insulation Resistance	Table 2 Item 1	Ri	500	-	MΩ

No.	ESCC Generic Spec. No. 3401		Measurements and Inspections		Symbol	Limits		Unit
	Environmental and Endurance Tests (1)	Test Method and Conditions	Identification	Conditions		Min	Max	
18	Overload Test	Para. 9.26	Internal Temperature Rated Current Contact Resistance Mated Shell Conductivity Insulation Resistance Voltage Proof Leakage Current	- ESCC 3401/005 Table 2 Item 3 Table 2 Item 1 Table 2 Item 2	T Rcr Vd Ri I _L	-	+100 ESCC 3401/005 Not applicable Table 2 Item 1 Table 2 Item 2	°C
19	Maintenance Ageing	Para. 9.27	Visual Examination Contact Retention Contact Insertion & Withdrawal Forces	- Para. 4.3.4 of this spec. Para. 4.3.8 of this spec.	-	-	- ESCC 3401 Para. 9.17 Para. 4.3.8	
20	Engage/Separation Forces	Para. 9.28 & Para. 4.3.9 of this spec.	Force	-	-	Para. 4.3.9		
21	Oversize Pin Exclusion	Para. 9.29 & Para. 4.3.10 of this spec.	-	-	-	ESCC 3401 Para. 9.29		
22	Probe Damage	Para. 9.30 & Para. 4.3.11 of this spec.	Contact Separation Force	Para. 4.3.9 of this spec.		Para. 4.3.9		
23	Solderability	Para. 9.31 & Para. 4.3.12 of this spec.	-	-	-	Para. 4.3.12		

NOTES:

- The tests in this Table refer to either Chart IV or V and shall be used as applicable.

APPENDIX A
AGREED DEVIATIONS FOR C&K CONNECT (F)

ITEMS AFFECTED	DESCRIPTION OF DEVIATIONS										
Para. 4.2.2 Deviations from Final Production Tests - Chart II	Para. 9.3, Contact Retainer Test may be omitted provided that a 100% external visual inspection of the contact retainer clips positioned within the insert is performed in accordance with the C&K PID requirements.										
Para. 4.5.2 The ESCC Component Number Para. 4.5.2.1(i) Contact Information	<p>Connectors may be ordered without the contact information characteristic code (i.e. -FO) being included in the ESCC Component Number. In which case, unless otherwise advised by C&K during the Ordering process, the contacts, of the appropriate quantity, to be supplied with the connectors shall be as follows:</p> <table> <tr> <th>Ordered Connector (without -FO)</th><th>Contacts</th></tr> <tr> <td>340100201BD*MA*P* (with Male Contacts)</td><td>340100511B</td></tr> <tr> <td>340100201BD*MA*S* (with Female Contacts)</td><td>340100512B</td></tr> <tr> <td>340100202BD*MA*P* (with Male Contacts)</td><td>340100517B</td></tr> <tr> <td>340100202BD*MA*S* (with Female Contacts)</td><td>340100518B</td></tr> </table>	Ordered Connector (without -FO)	Contacts	340100201BD*MA*P* (with Male Contacts)	340100511B	340100201BD*MA*S* (with Female Contacts)	340100512B	340100202BD*MA*P* (with Male Contacts)	340100517B	340100202BD*MA*S* (with Female Contacts)	340100518B
Ordered Connector (without -FO)	Contacts										
340100201BD*MA*P* (with Male Contacts)	340100511B										
340100201BD*MA*S* (with Female Contacts)	340100512B										
340100202BD*MA*P* (with Male Contacts)	340100517B										
340100202BD*MA*S* (with Female Contacts)	340100518B										

APPENDIX B
AGREED DEVIATIONS FOR SOURIAU (F)

ITEMS AFFECTED	DESCRIPTION OF DEVIATIONS										
Para. 4.2.2 Deviations from Final Production Tests - Chart II	Para. 9.3, Contact Retainer Test may be omitted provided that a 100% external visual inspection of the contact retainer clips positioned within the insert is performed in accordance with the SOURIAU PID requirements.										
Para. 4.5.2 The ESCC Component Number Para. 4.5.2.1(i) Contact Information	<p>Connectors may be ordered without the contact information characteristic code (i.e. -FO) being included in the ESCC Component Number. In which case, unless otherwise advised by SOURIAU during the Ordering process, the contacts, of the appropriate quantity, to be supplied with the connectors shall be as follows:</p> <table><tr><th>Ordered Connector (without -FO)</th><th>Contacts</th></tr><tr><td>340100201BD*MA*P* (with Male Contacts)</td><td>340100511B</td></tr><tr><td>340100201BD*MA*S* (with Female Contacts)</td><td>340100512B</td></tr><tr><td>340100202BD*MA*P* (with Male Contacts)</td><td>340100517B</td></tr><tr><td>340100202BD*MA*S* (with Female Contacts)</td><td>340100518B</td></tr></table>	Ordered Connector (without -FO)	Contacts	340100201BD*MA*P* (with Male Contacts)	340100511B	340100201BD*MA*S* (with Female Contacts)	340100512B	340100202BD*MA*P* (with Male Contacts)	340100517B	340100202BD*MA*S* (with Female Contacts)	340100518B
Ordered Connector (without -FO)	Contacts										
340100201BD*MA*P* (with Male Contacts)	340100511B										
340100201BD*MA*S* (with Female Contacts)	340100512B										
340100202BD*MA*P* (with Male Contacts)	340100517B										
340100202BD*MA*S* (with Female Contacts)	340100518B										

APPENDIX C**AGREED DEVIATIONS FOR AMPHENOL POSITRONIC (F)**

ITEMS AFFECTED	DESCRIPTION OF DEVIATIONS										
Para. 4.5.2 The ESCC Component Number Para. 4.5.2.1(i) Contact Information	<p>Connectors may be ordered without the contact information characteristic code (i.e. -FO) being included in the ESCC Component Number. In which case, unless otherwise advised by AMPHENOL POSITRONIC during the Ordering process, the contacts, of the appropriate quantity, to be supplied with the connectors shall be as follows:</p> <table><tr><th>Ordered Connector (without -FO)</th><th>Contacts</th></tr><tr><td>340100201BD*MA*P* (with Male Contacts)</td><td>340100511B</td></tr><tr><td>340100201BD*MA*S* (with Female Contacts)</td><td>340100512B</td></tr><tr><td>340100202BD*MA*P* (with Male Contacts)</td><td>340100509B</td></tr><tr><td>340100202BD*MA*S* (with Female Contacts)</td><td>340100510B</td></tr></table>	Ordered Connector (without -FO)	Contacts	340100201BD*MA*P* (with Male Contacts)	340100511B	340100201BD*MA*S* (with Female Contacts)	340100512B	340100202BD*MA*P* (with Male Contacts)	340100509B	340100202BD*MA*S* (with Female Contacts)	340100510B
Ordered Connector (without -FO)	Contacts										
340100201BD*MA*P* (with Male Contacts)	340100511B										
340100201BD*MA*S* (with Female Contacts)	340100512B										
340100202BD*MA*P* (with Male Contacts)	340100509B										
340100202BD*MA*S* (with Female Contacts)	340100510B										