



**CONNECTORS, ELECTRICAL, RECTANGULAR  
MULTIPLE INSERT TYPE, RACK AND PANEL,  
REMOVABLE CRIMP CONTACTS,  
BASED ON MIL-C-83527  
ESCC Detail Specification No. 3401/060**

**ISSUE 1  
October 2002**



	ESCC Detail Specification		PAGE ii ISSUE 1
--	---------------------------	--	--------------------

### **LEGAL DISCLAIMER AND COPYRIGHT**

European Space Agency, Copyright © 2002. All rights reserved.

The European Space Agency disclaims any liability or responsibility, to any person or entity, with respect to any loss or damage caused, or alleged to be caused, directly or indirectly by the use and application of this ESCC publication.

This publication, without the prior permission of the European Space Agency and provided that it is not used for a commercial purpose, may be:

- copied in whole in any medium without alteration or modification.
- copied in part, in any medium, provided that the ESCC document identification, comprising the ESCC symbol, document number and document issue, is removed.



europaean space agency  
agence spatiale européenne

Pages 1 to 29

**CONNECTORS, ELECTRICAL, RECTANGULAR  
MULTIPLE INSERT TYPE, RACK AND PANEL,  
REMOVABLE CRIMP CONTACTS,  
BASED ON MIL-C-83527  
ESA/SCC Detail Specification No. 3401/060**



**space components  
coordination group**

Issue/Rev.	Date	Approved by	
		SCCG Chairman	ESA Director General or his Deputy
Issue 1	September 1994	<i>P. Monceau</i>	<i>J. J. ...</i>
Revision 'A'	May 1995	<i>P. Monceau</i>	<i>J. J. ...</i>

**SCC**ESA/SCC Detail Specification  
No. 3401/060

Rev. 'A'

PAGE 2

ISSUE 1

**DOCUMENTATION CHANGE NOTICE**

Rev. Letter	Rev. Date	Reference	CHANGE Item	Approved DCR No.
'A'	May '95	P1. Cover page P2. DCN P27-29. Table 6	: Editorial corrections	None None 23725

**TABLE OF CONTENTS**

	<u>Page</u>
<b>1. <u>GENERAL</u></b>	<b>5</b>
1.1 Scope	5
1.2 Range of Components	5
1.3 Maximum Ratings	5
1.4 Parameter Derating Information	5
1.5 Physical Dimensions	5
<b>2. <u>APPLICABLE DOCUMENTS</u></b>	<b>5</b>
<b>3. <u>TERMS, DEFINITIONS, ABBREVIATIONS, SYMBOLS AND UNITS</u></b>	<b>22</b>
<b>4. <u>REQUIREMENTS</u></b>	<b>22</b>
4.1 General	22
4.2 Deviations from Generic Specification	22
4.2.1 Deviations from Special In-process Controls	22
4.2.2 Deviations from Final Production Tests	22
4.2.3 Deviations from Burn-in and Electrical Measurements	22
4.2.4 Deviations from Qualification Tests	22
4.2.5 Deviations from Lot Acceptance Tests	22
4.3 Mechanical Requirements	22
4.3.1 Dimension Check	22
4.3.2 Weight	22
4.3.3 Contact Capability	22
4.3.4 Contact Retention	23
4.3.5 Mating and Unmating Forces	23
4.3.6 Insert Retention	23
4.3.7 Jackscrew Retention	23
4.3.8 Contact Insertion and Withdrawal Forces	23
4.3.9 Engagement and Separation Forces	23
4.3.10 Oversize Pin Exclusion	23
4.3.11 Probe Damage	23
4.3.12 Solderability	23
4.4 Materials and Finishes	23
4.4.1 Shell	23
4.4.2 Inserts	23
4.4.3 Contacts	23
4.4.4 Contact Retaining Clip	23
4.4.5 Guiding and Locking Devices	23
4.4.6 Magnetism Level	24
4.5 Marking	24
4.5.1 General	24
4.5.2 Contact Identification	24
4.5.3 The SCC Component Number	24
4.5.4 Characteristics	24
4.5.5 Traceability Information	25
4.5.6 Marking of Small Components	25
4.6 Electrical Measurements	25
4.6.1 Electrical Measurements at Room Temperature	25
4.6.2 Electrical Measurements at High and Low Temperatures	25
4.6.3 Circuit for Electrical Measurements	25
4.7 Burn-in and Electrical Measurements	25



	<u>Page</u>
4.8 Environmental and Endurance Tests	26
4.8.1 Measurements and Inspections on Completion of Environmental Tests	26
4.8.2 Measurements and Inspections at Intermediate Points during Endurance Tests	26
4.8.3 Measurements and Inspections on Completion of Endurance Tests	26
4.8.4 Conditions for Operating Life Tests	26
4.8.5 Electrical Circuits for Operating Life Tests	26
4.8.6 Conditions for High Temperature Storage Test	26

#### **TABLES**

1(a) Range of Components	6
1(b) Maximum Ratings	6
2 Electrical Measurements at Room Temperature	26
3 Not applicable	N/A
4 Not applicable	N/A
5 Not applicable	N/A
6 Measurements and Inspections on Completion of Environmental and Endurance Tests	27

#### **FIGURES**

1 Parameter Derating Information	7
2 Physical Dimensions -	8
2(a) Physical Dimensions - Receptacles and Plugs	8
2(b) Physical Dimensions - Contact Arrangements	18
2(c) Physical Dimensions - Polarisation	20
2(d) Physical Dimensions - Insert Combination Code	21

#### **APPENDICES (Applicable to specific Manufacturers only)**

None.

**1. GENERAL****1.1 SCOPE**

This specification details the ratings, physical and electrical characteristics, test and inspection data for Connectors, Electrical, Rectangular, Multiple Insert Type, Rack and Panel Removable Contacts, based on MIL-C-83527.

It shall be read in conjunction with:

- ESA/SCC Generic Specification No. 3401, Connectors, Electrical, Non-Filtered, Circular and Rectangular.
- ESA/SCC Detail Specification No. 3401/061, Contacts, Electrical, Crimp for 3401/060 Connectors.

the requirements of which are supplemented herein.

**1.2 RANGE OF COMPONENTS**

The different sizes of connectors specified herein, which are also covered by this specification, together with their mechanical characteristics, are given in Table 1(a).

**1.3 MAXIMUM RATINGS**

The maximum ratings, which shall not be exceeded at any time during use or storage, applicable to the connectors specified herein, are scheduled in Table 1(b).

**1.4 PARAMETER DERATING INFORMATION**

The applicable derating information for the connectors specified herein is shown in Figure 1.

**1.5 PHYSICAL DIMENSIONS**

The physical dimensions of the connectors specified herein are shown in Figure 2.

**2. APPLICABLE DOCUMENTS**

The following documents form part of this specification and shall be read in conjunction with it:-

- (a) ESA/SCC Generic Specification No. 3401, Connectors, Electrical, Non-Filtered, Circular and Rectangular.
- (b) ESA/SCC Detail Specification No. 3401/061, Contacts, Electrical, Crimp for 3401/060 Connectors.
- (c) MIL-STD-1842, Insert Arrangements for MIL-C-83527 Rack to Panel Connectors.

**TABLE 1(a) - RANGE OF COMPONENTS**

SHELL SIZE (2)	SHELL STYLE	MAX. WEIGHT g (1)	MATING AND UNMATING FORCE		
			INITIAL		AFTER HIGH TEMPERATURE STORAGE
			N. min	N. max	N. max
2	Receptacle	250	-	-	-
3	Receptacle	450	-	-	-
4	Receptacle	650	-	-	-
2	Plug	220	-	500	800
3	Plug	400	-	1000	1300
4	Plug	550	-	1500	1800

**NOTES**

- Without contacts. See ESA/SCC Detail Specification No. 3401/061 for contact weights.
- See Figure 2.

**TABLE 1(b) - MAXIMUM RATINGS**

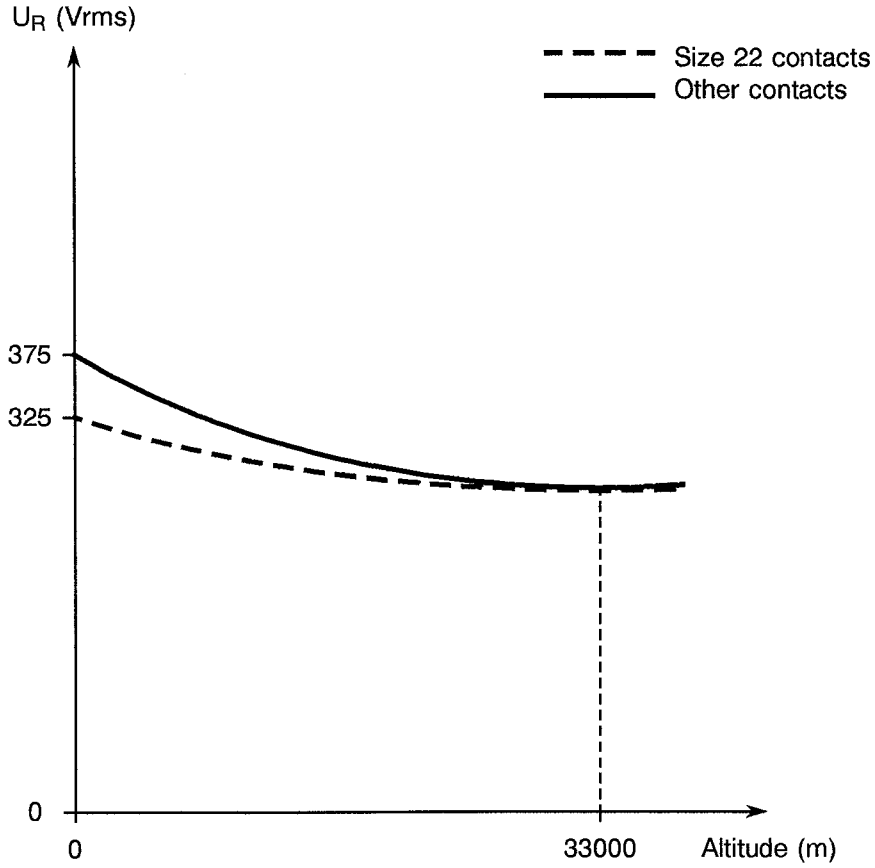
No.	CHARACTERISTICS	SYMBOL	MAXIMUM RATING		UNIT
			MIN.	MAX.	
1	Working Voltage (Sea Level) - Size 22 - Other contacts	$U_R$	- -	325 375	Vrms Vrms
2	Operating Temperature Range	$T_{op}$	-65	+200 (1)	°C
3	Storage Temperature Range	$T_{stg}$	-65	+200	°C

**NOTES**

- When all contacts are at 100% of rated current in a connector, the current shall be derated from 100% at +125°C to 0 at +200°C (see ESA/SCC Detail Specification No. 3401/061 for rated contact current).



**FIGURE 1 - PARAMETER DERATING INFORMATION**

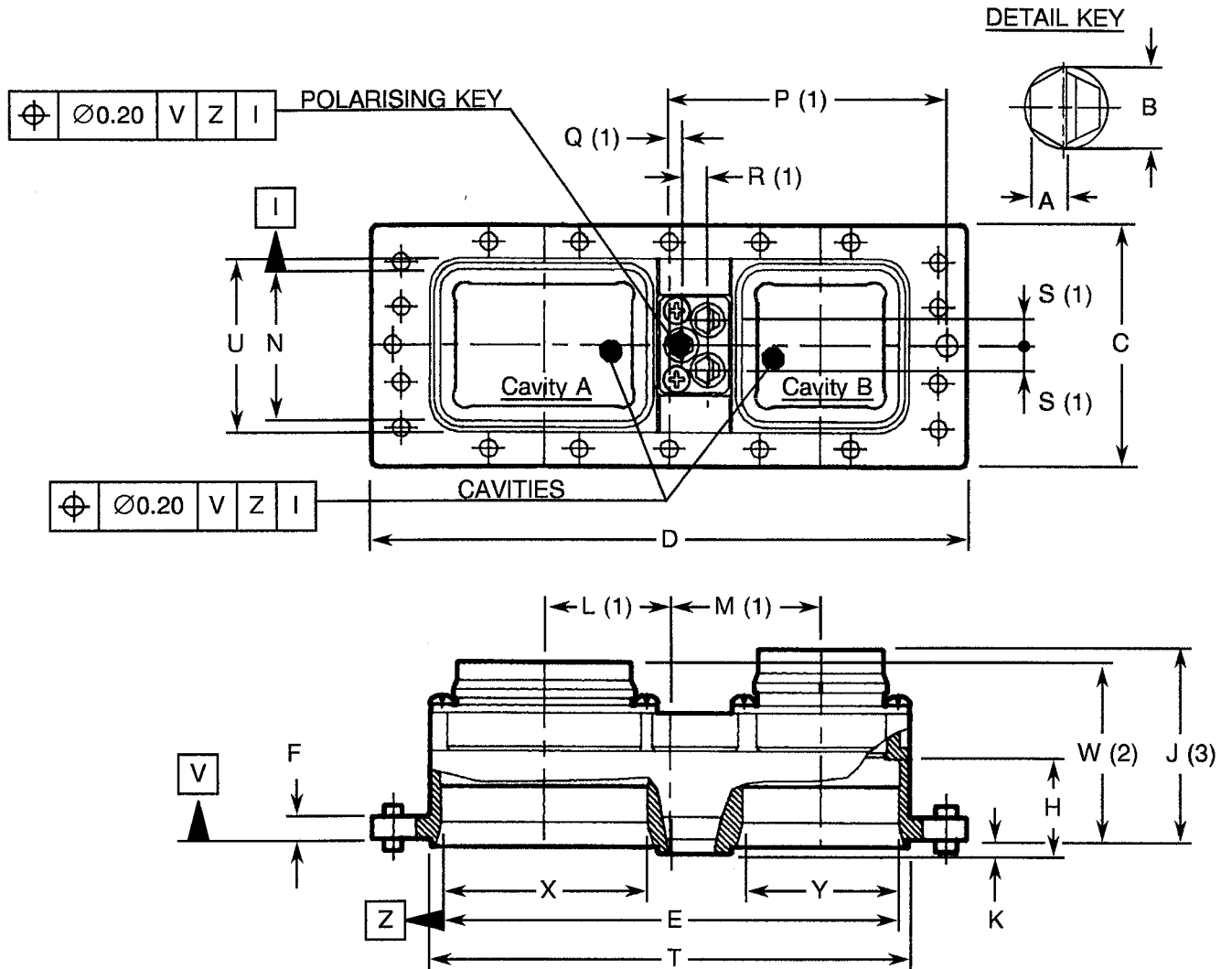


Working Voltage versus Altitude



**FIGURE 2 - PHYSICAL DIMENSIONS**

**FIGURE 2(a) - RECEPTACLES AND PLUGS  
RECEPTACLE SIZE 2 - FRONT VIEW**



**NOTES**

1. This dimension is for reference purpose only.
2. For arrangements I-150 and II-100 only.
3. For all other arrangements.

Symbol/ Dim.	A	B	C	D	E	F	H	J	K	L Ref.	M Ref.
Max.	3.12	6.32	53.09	131.32	100.86	5.08	20.75	46.48	3.43	27.69	33.27
Min.	2.60	5.75	52.58	130.81	100.71	4.57	20.55	-	2.92		

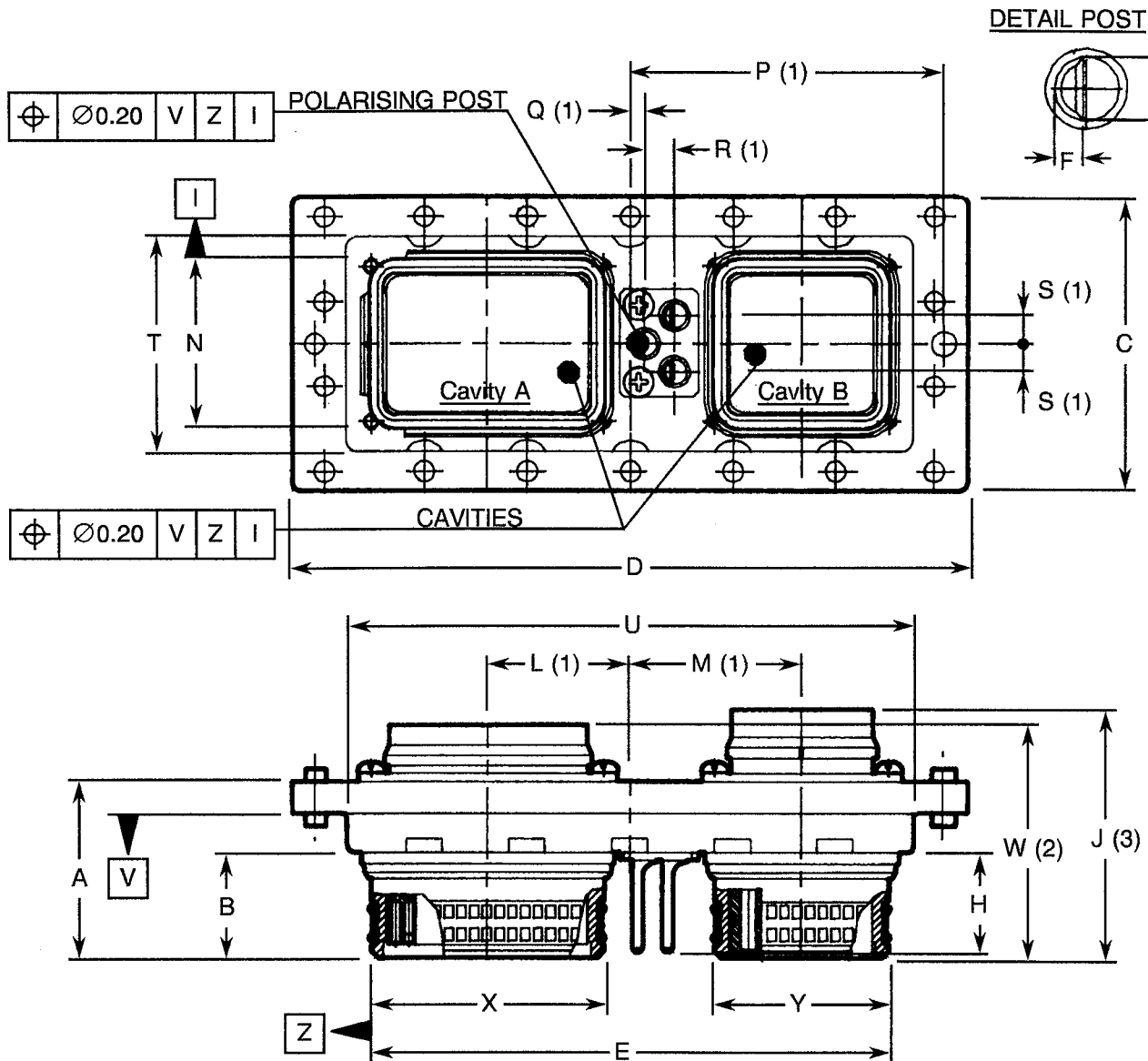
Symbol/ Dim.	N	P Ref.	Q Ref.	R Ref.	S Ref.	T	U	W	X	Y
Max.	33.05	60.96	2.67	5.84	5.46	105.99	38.00	38.86	45.54	34.37
Min.	32.94					-	-	-	45.44	34.26





**FIGURE 2 - PHYSICAL DIMENSIONS (CONTINUED)**

**FIGURE 2(a) - RECEPTACLES AND PLUGS  
PLUG SIZE 2 - FRONT VIEW**



**NOTES**

1. This dimension is for reference purpose only.
2. For arrangements I-150 and II-100 only.
3. For all other arrangements.

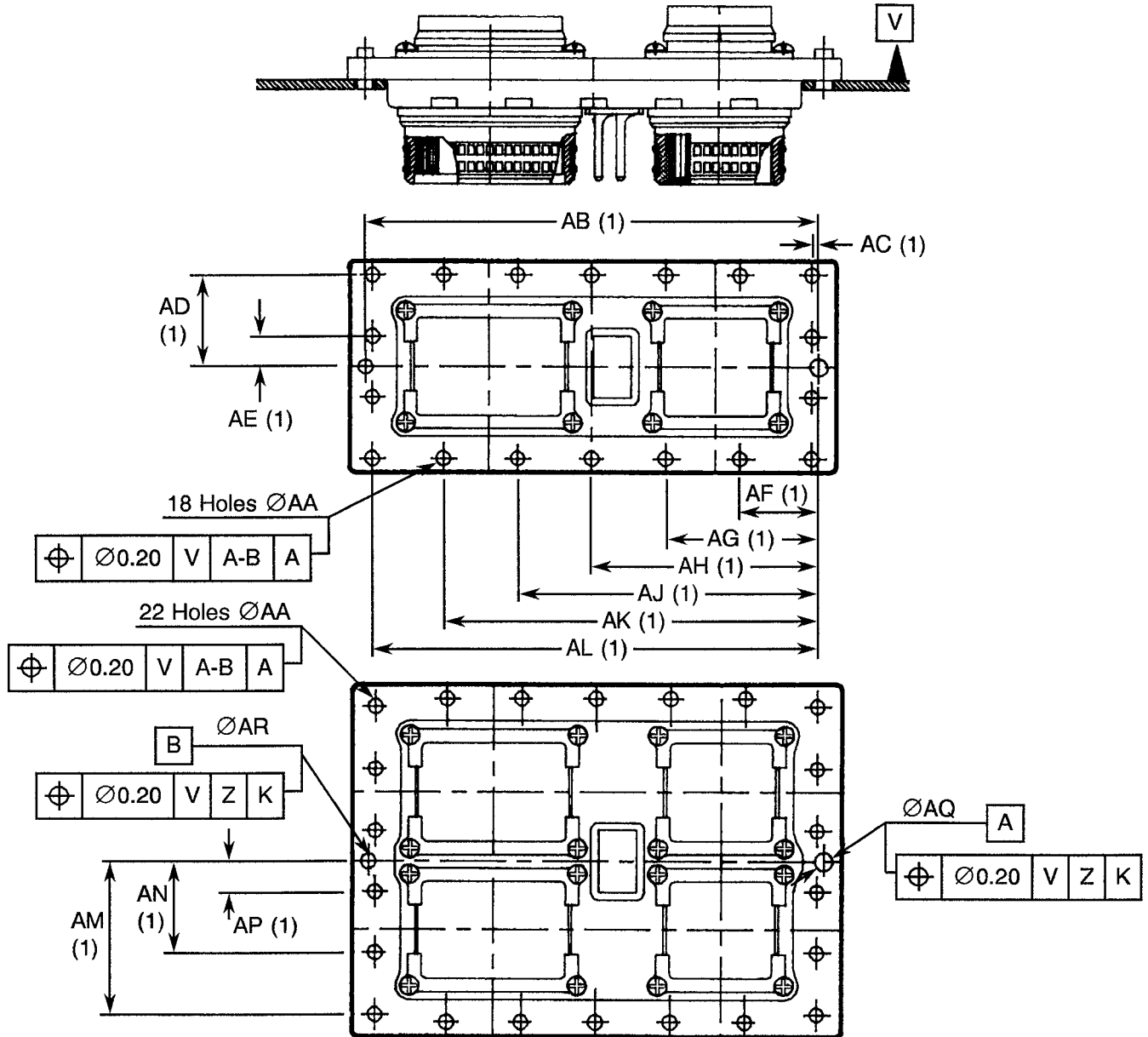
Symbol/ Dim.	A	B	C	D	E	F	H	J	K	L Ref.	M Ref.
Max.	34.01	20.29	57.30	131.32	100.66	2.15	19.30	40.39	4.81	27.69	33.27
Min.	33.50	20.09	56.79	130.81	100.51	2.03	18.80	-	4.84	-	-

Symbol/ Dim.	N	P Ref.	Q Ref.	R Ref.	S Ref.	T	U	W	X	Y
Max.	32.79	60.96	2.67	5.84	5.46	42.14	110.13	35.50	45.24	34.06
Min.	32.69	-	-	-	-	41.86	109.80	-	45.14	33.96



**FIGURE 2 - PHYSICAL DIMENSIONS (CONTINUED)**

**FIGURE 2(a) - RECEPTACLES AND PLUGS  
PLUG SIZES 2 AND 3 - REAR VIEW**



**NOTES**

1. This dimension is for reference purpose only.

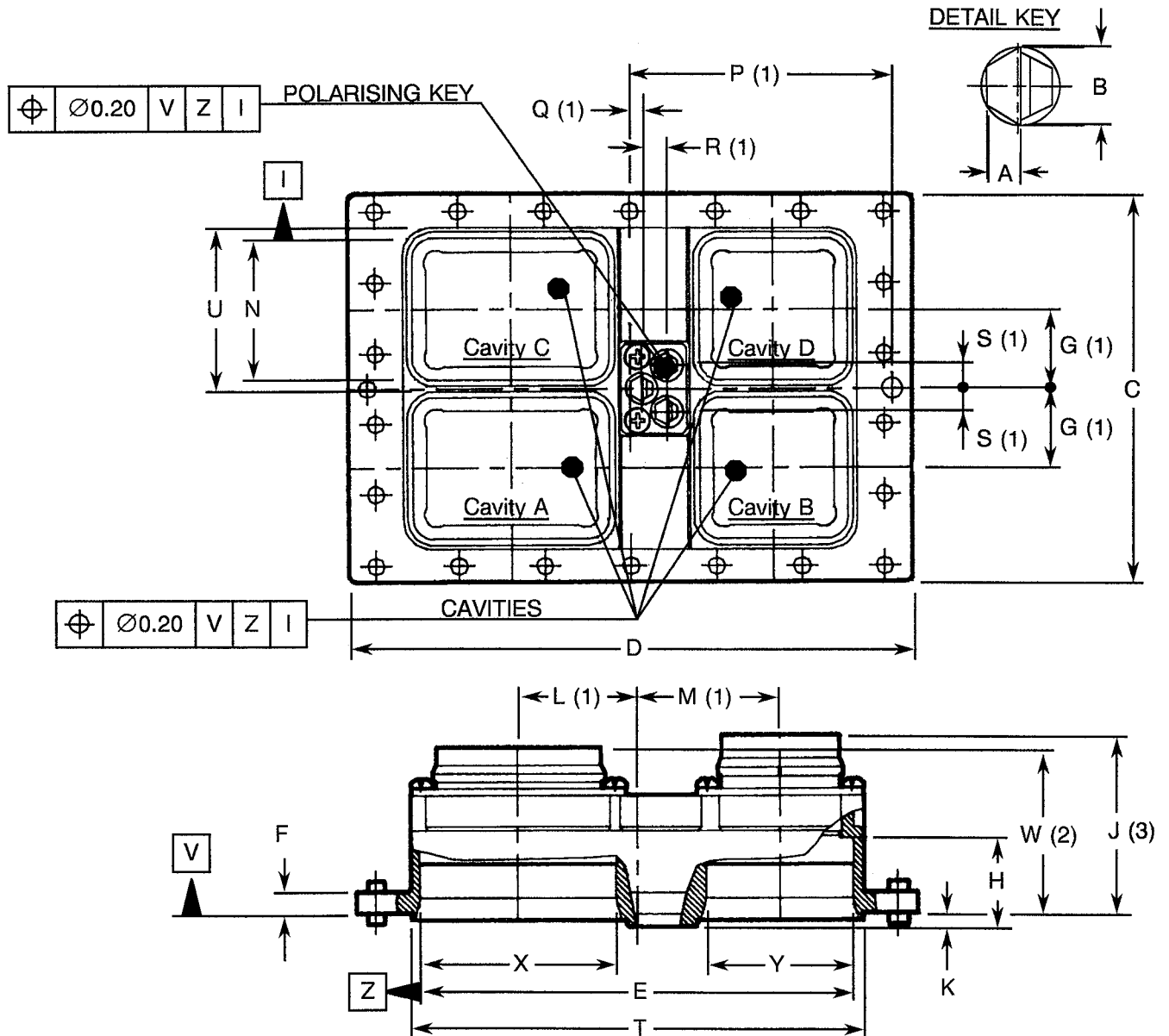
Symbol/ Dim.	ØAA	AB Ref.	AC Ref.	AD Ref.	AE Ref.	AF Ref.	AG Ref.	AH Ref.	AJ Ref.	AK Ref.	AL Ref.
Max.	3.96	121.92	1.83	24.76	8.26	21.08	41.02	60.96	80.90	100.84	120.09
Min.	3.71										

Symbol/ Dim.	AM Ref.	AN Ref.	AP Ref.	ØAQ	ØAR
Max.	41.28	24.76	8.26	4.78	3.99
Min.				4.67	3.88



**FIGURE 2 - PHYSICAL DIMENSIONS (CONTINUED)**

**FIGURE 2(a) - RECEPTACLES AND PLUGS  
RECEPTACLE SIZE 3 - FRONT VIEW**



**NOTES**

1. This dimension is for reference purpose only.
2. For arrangements I-150 and II-100 only.
3. For all other arrangements.

Symbol/ Dim.	A	B	C	D	E	F	G Ref.	H	J	K	L Ref.
Max.	3.12	6.32	94.39	131.32	100.86	5.08	18.54	20.75	46.48	3.43	27.69
Min.	2.60	5.75	93.88	130.81	100.71	4.57	-	20.55	-	2.92	-

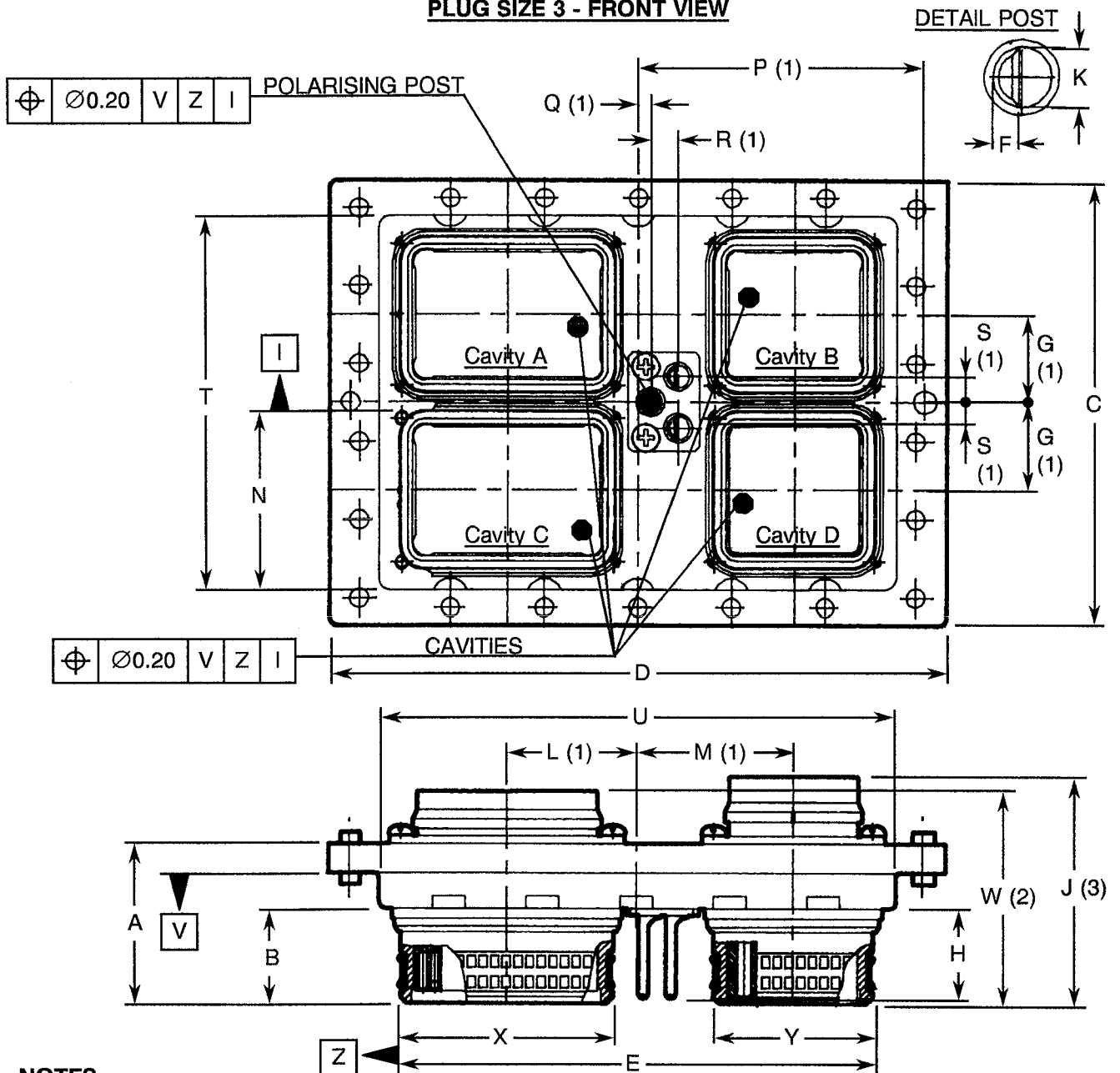
  

Symbol/ Dim.	M Ref.	N	P Ref.	Q Ref.	R Ref.	S Ref.	T	U	W	X	Y
Max.	33.27	33.05	60.96	2.67	5.84	5.46	105.99	38.00	38.86	45.54	34.37
Min.	-	32.94	-	-	-	-	-	-	-	45.44	34.26



**FIGURE 2 - PHYSICAL DIMENSIONS (CONTINUED)**

**FIGURE 2(a) - RECEPTACLES AND PLUGS  
PLUG SIZE 3 - FRONT VIEW**



**NOTES**

1. This dimension is for reference purpose only.
2. For arrangements I-150 and II-100 only.
3. For all other arrangements.

Symbol/ Dim.	A	B	C	D	E	F	G Ref.	H	J	K	L Ref.
Max.	34.01	20.29	94.39	131.32	100.66	2.15	18.54	19.30	40.39	4.81	27.69
Min.	33.50	20.09	93.88	130.81	100.51	2.03	18.54	18.80	-	4.64	27.69

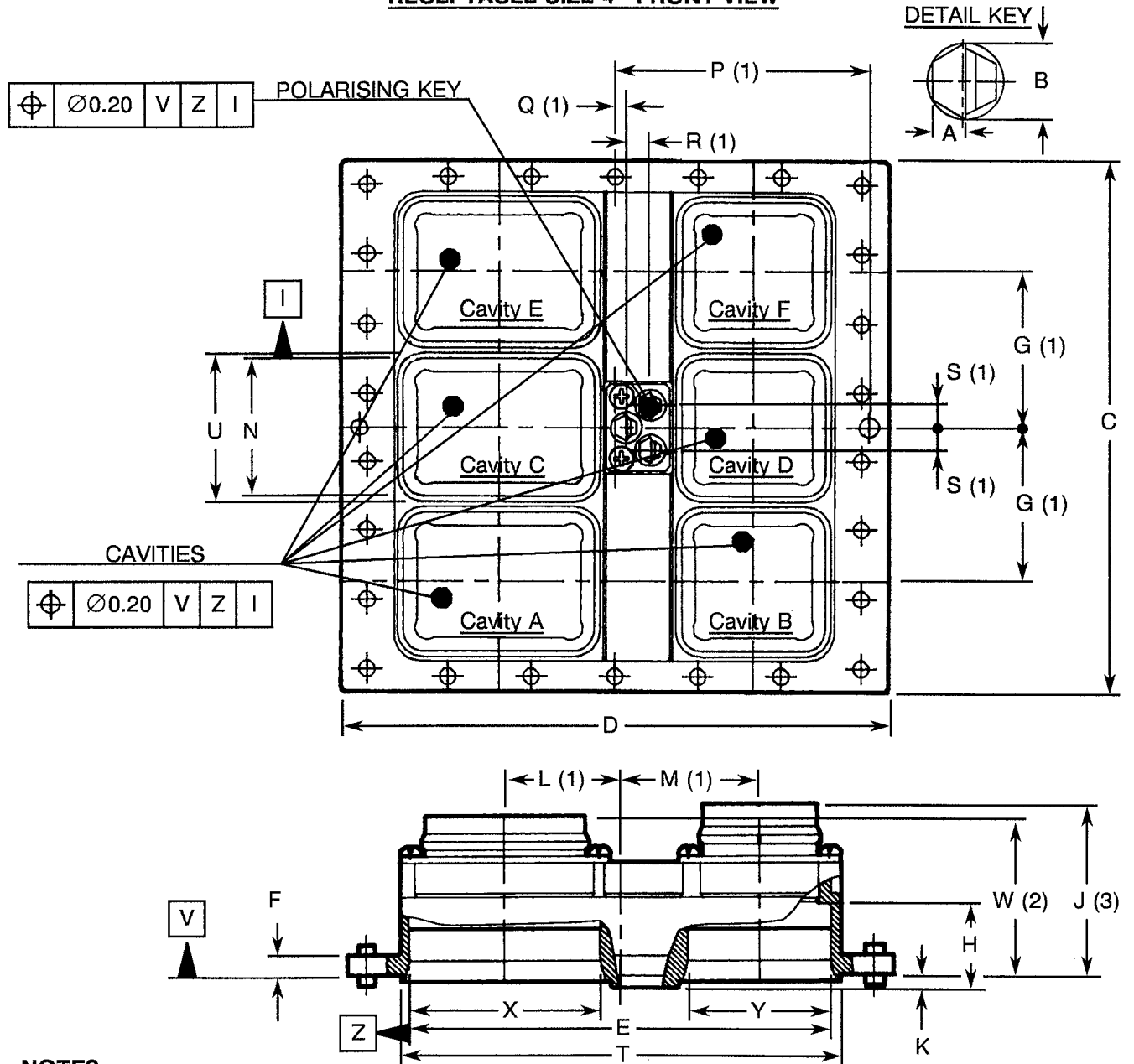
  

Symbol/ Dim.	M Ref.	N	P Ref.	Q Ref.	R Ref.	S Ref.	T	U	W	X	Y
Max.	33.27	32.79	60.96	2.67	5.84	5.46	79.22	110.13	35.50	45.24	34.06
Min.	33.27	32.69	60.96	2.67	5.84	5.46	78.97	109.88	-	45.14	33.96



**FIGURE 2 - PHYSICAL DIMENSIONS (CONTINUED)**

**FIGURE 2(a) - RECEPTACLES AND PLUGS  
RECEPTACLE SIZE 4 - FRONT VIEW**



**NOTES**

1. This dimension is for reference purpose only.
2. For arrangements I-150 and II-100 only.
3. For all other arrangements.

Symbol/Dim.	A	B	C	D	E	F	G Ref.	H	J	K	L Ref.
Max.	3.12	6.32	125.25	131.32	100.86	5.08	37.08	20.75	46.48	3.43	27.69
Min.	2.60	5.75	126.75	130.81	100.71	4.57	37.08	20.55	-	2.92	27.69

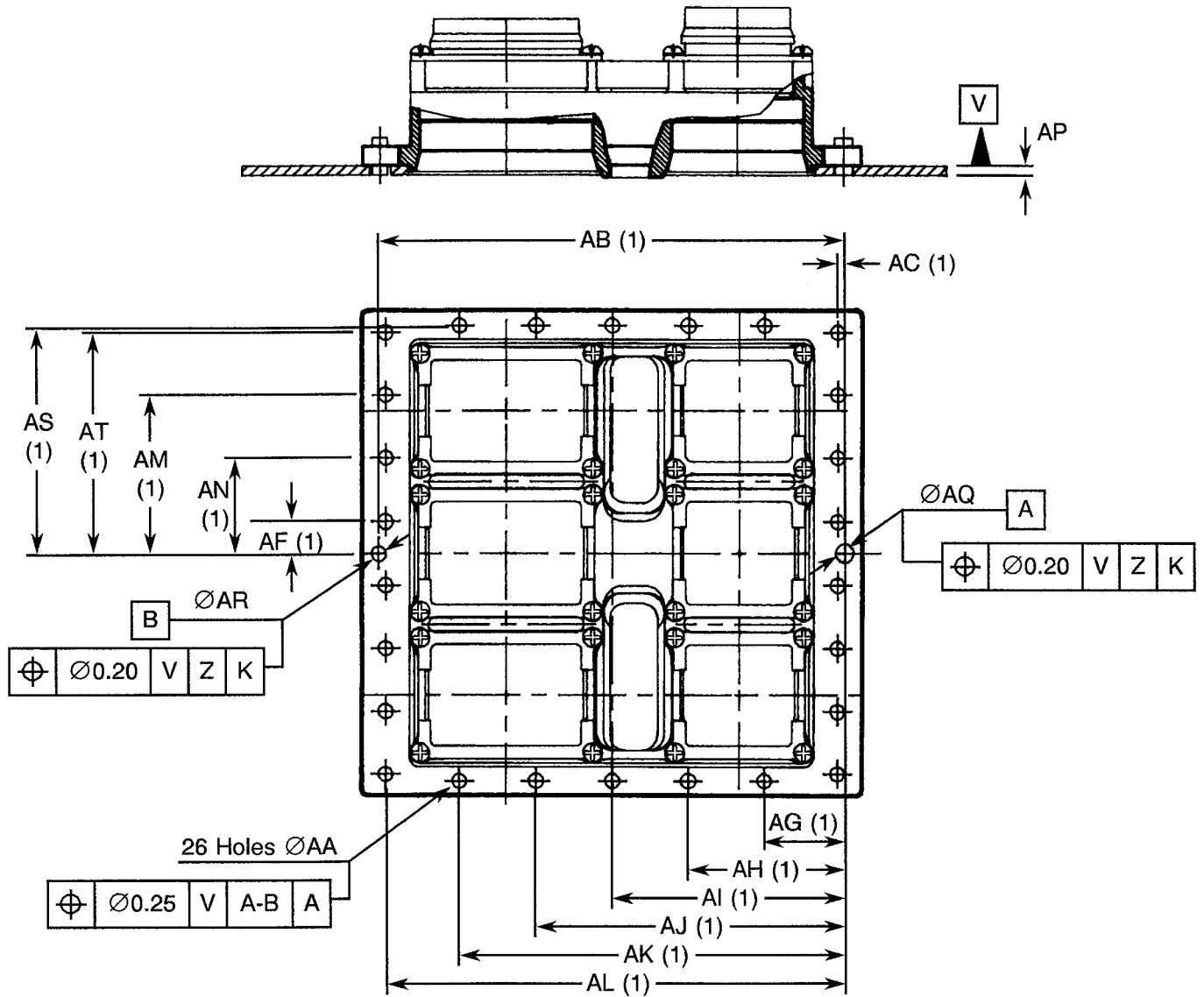
Symbol/Dim.	M Ref.	N	P Ref.	Q Ref.	R Ref.	S Ref.	T	U	W	X	Y
Max.	33.27	33.05	60.96	2.67	5.84	5.46	105.99	38.00	38.86	45.54	34.37
Min.	33.27	32.94	60.96	2.67	5.84	5.46	-	-	-	45.44	34.26





**FIGURE 2 - PHYSICAL DIMENSIONS (CONTINUED)**

**FIGURE 2(a) - RECEPTACLES AND PLUGS  
RECEPTACLE SIZE 4 - REAR VIEW**



**NOTES**

1. This dimension is for reference purpose only.

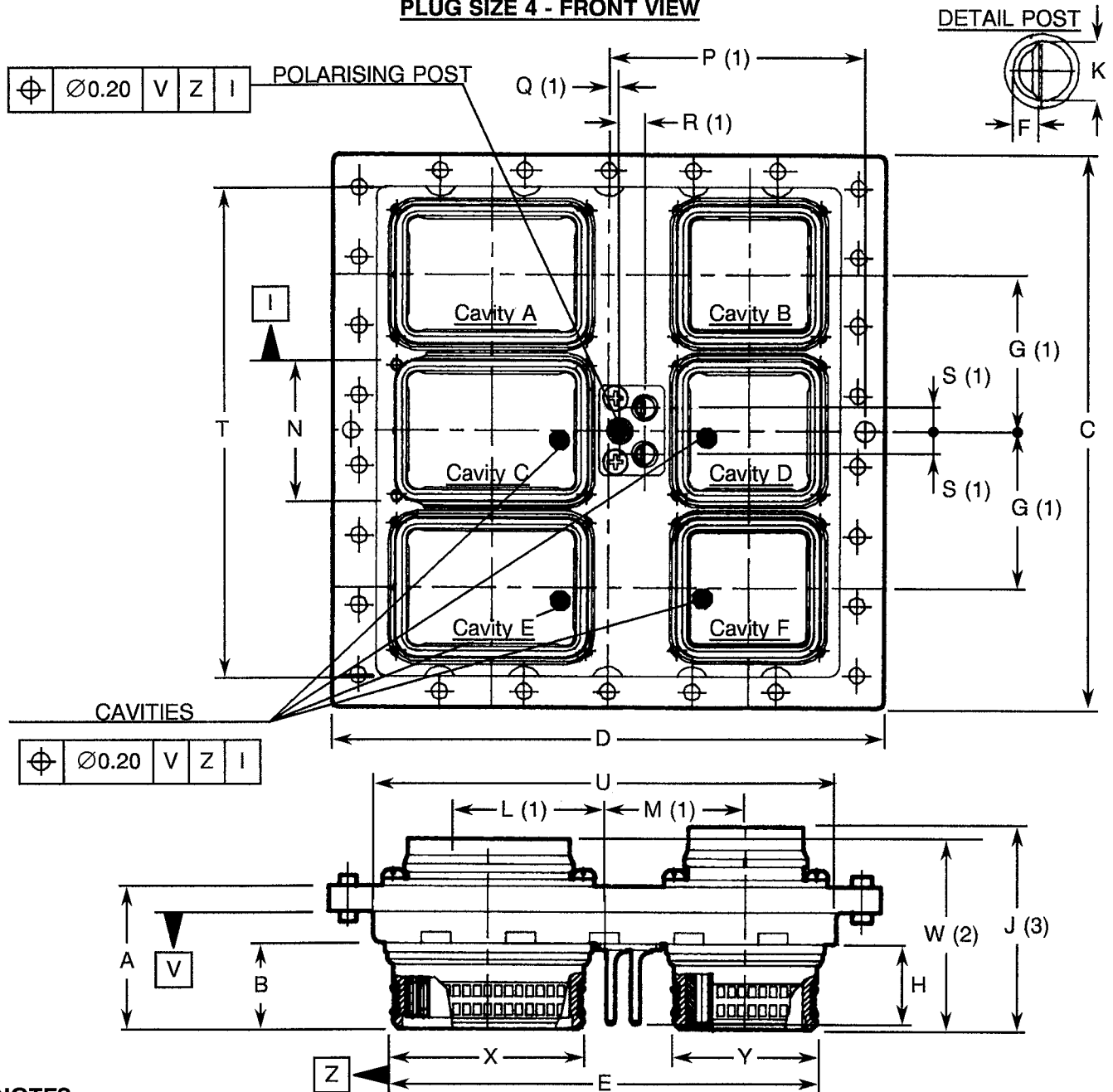
Symbol/ Dim.	ØAA	AB Ref.	AC Ref.	AF Ref.	AG Ref.	AH Ref.	AI Ref.	AJ Ref.	AK Ref.	AL Ref.	AM Ref.
Max.	3.96	121.92	1.83	8.26	21.08	41.02	60.96	80.90	100.84	120.09	41.28
Min.	3.71										

Symbol/ Dim.	AN Ref.	AP	ØAQ	ØAR	AS Ref.	AT Ref.
Max.	24.76	2.50	4.78	3.99	59.61	57.78
Min.		-	4.67	3.88		



**FIGURE 2 - PHYSICAL DIMENSIONS (CONTINUED)**

**FIGURE 2(a) - RECEPTACLES AND PLUGS  
PLUG SIZE 4 - FRONT VIEW**



**NOTES**

1. This dimension is for reference purpose only.
2. For arrangements I-150 and II-100 only.
3. For all other arrangements.

Symbol/ Dim.	A	B	C	D	E	F	G Ref.	H	J	K	L Ref.
Max.	34.01	20.29	94.39	131.32	100.86	2.15	37.08	19.30	40.39	4.81	27.69
Min.	33.50	20.09	93.88	130.81	100.51	2.03		18.80	-	4.64	

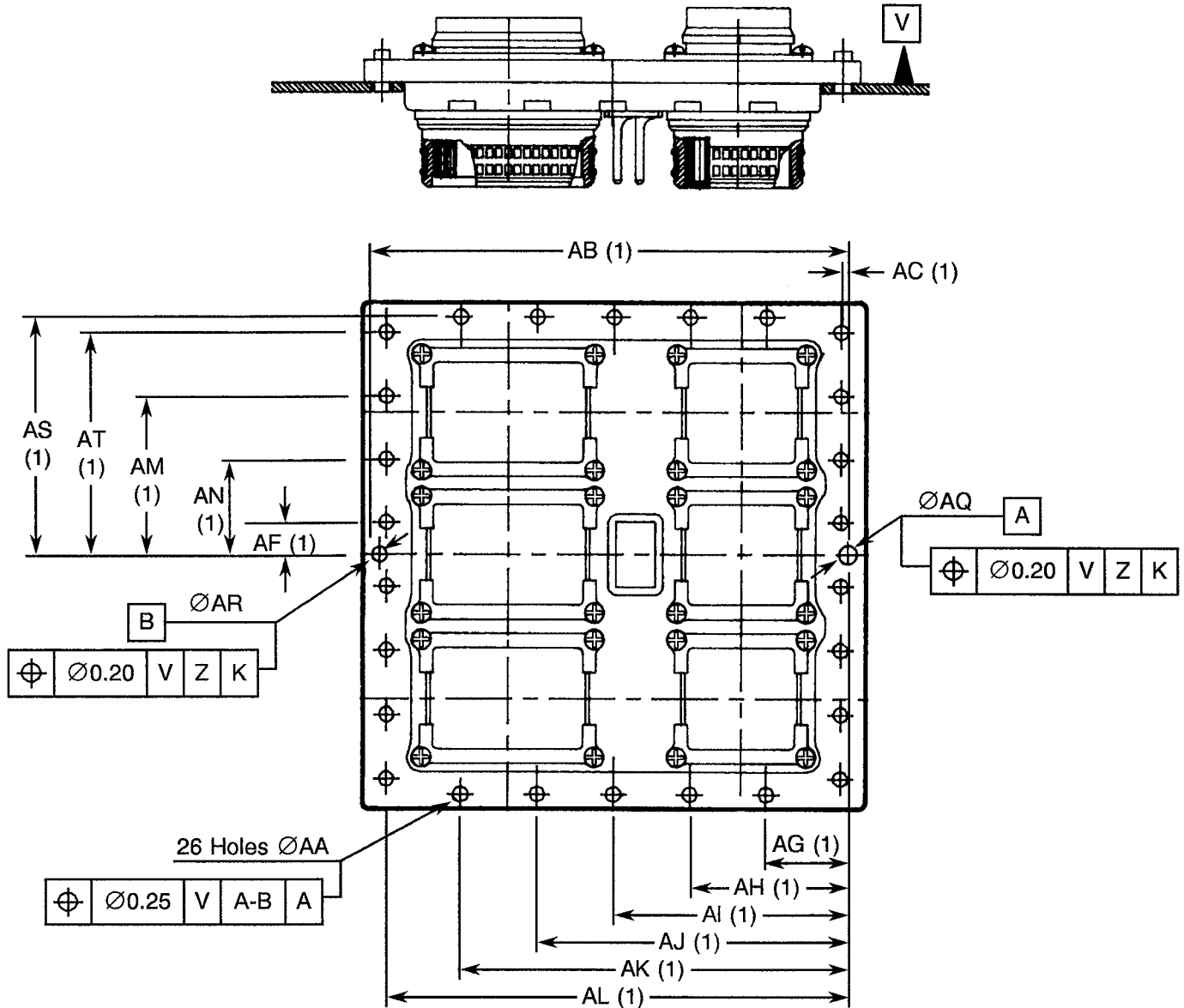
  

Symbol/ Dim.	M Ref.	N	P Ref.	Q Ref.	R Ref.	S Ref.	T	U	W	X	Y
Max.	33.27	32.79	60.96	2.67	5.84	5.46	116.31	110.13	35.50	45.24	34.06
Min.		32.69					116.05	109.88	-	45.14	33.96



**FIGURE 2 - PHYSICAL DIMENSIONS (CONTINUED)**

**FIGURE 2(a) - RECEPTACLES AND PLUGS  
PLUG SIZE 4 - REAR VIEW**



**NOTES**

1. This dimension is for reference purpose only.

Symbol/ Dim.	ØAA	AB Ref.	AC Ref.	AF Ref.	AG Ref.	AH Ref.	Ai Ref.	AJ Ref.	AK Ref.	AL Ref.	AM Ref.
Max.	3.96	121.92	1.83	8.26	21.08	41.02	60.96	80.90	100.84	120.09	41.28
Min.	3.71										

Symbol/ Dim.	AN Ref.	ØAQ	ØAR	AS Ref.	AT Ref.
Max.	24.76	4.78	3.99	61.85	57.78
Min.		4.67	3.88		

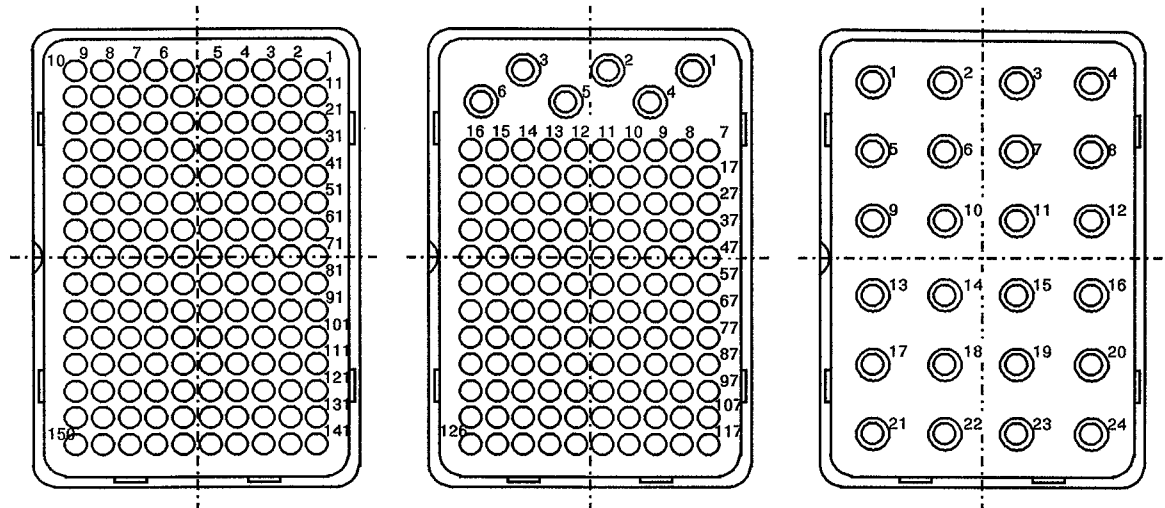


**FIGURE 2 - PHYSICAL DIMENSIONS (CONTINUED)**

**FIGURE 2(b) - CONTACT ARRANGEMENTS**

**MALE INSULATOR - FRONT VIEW**

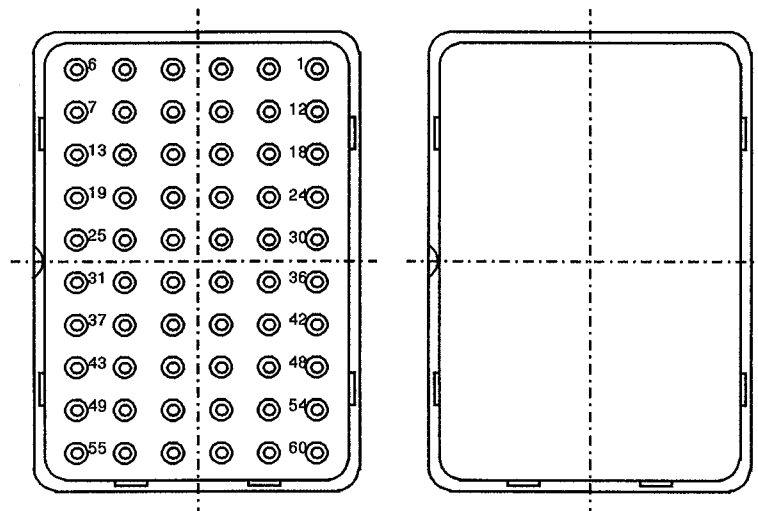
CAVITIES: A, C, E



Arrangements: 1 - 150  
Number of contacts: 150 Size 22

1 - 126  
120 Size 22  
6 Size 16

1 - 24  
24 Size 12



Arrangements: 1 - 60  
Number of contacts: 60 Size 20

1 - 0  
Without contacts

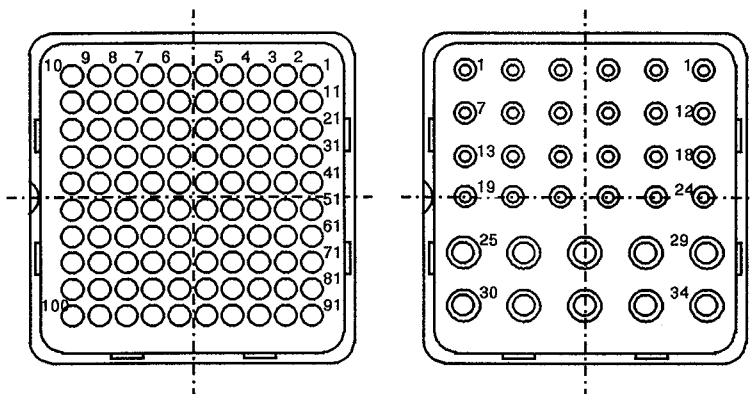
**NOTES**

1. Contact locations and identifications in conformity with MIL-STD-1842.



**FIGURE 2 - PHYSICAL DIMENSIONS (CONTINUED)**

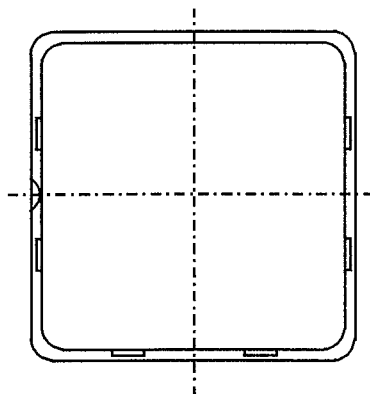
**FIGURE 2(b) - CONTACT ARRANGEMENTS**  
**MALE INSULATOR - FRONT VIEW**  
**CAVITIES: B, D, F**



Arrangements:  
Number of contacts:

2 - 100  
100 Size 22

2 - 34  
24 Size 20  
10 Size 16



Arrangements:  
Number of contacts:

2 - 0  
Without contacts

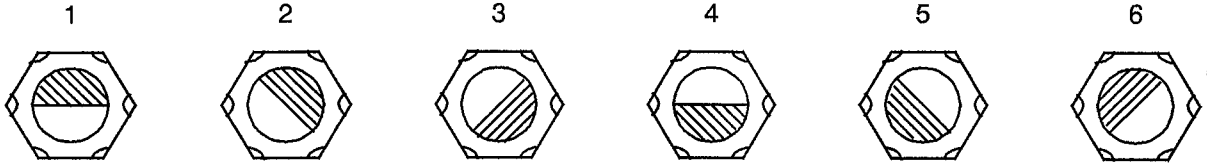
**NOTES**

- 1. Contact locations and identifications in conformity with MIL-STD-1842.



**FIGURE 2 - PHYSICAL DIMENSIONS (CONTINUED)**

**FIGURE 2(c) - POLARISATION  
POLARISATION POSITIONS**



PLUG				RECEPTACLE				PLUG				RECEPTACLE			
POSITION	LEFT POST	CENTRE POST	RIGHT POST	POSITION	LEFT KEY	CENTRE KEY	RIGHT KEY	POSITION	LEFT POST	CENTRE POST	RIGHT POST	POSITION	LEFT KEY	CENTRE KEY	RIGHT KEY
00	-	-	-	00	-	-	-	50	2	2	5	50	6	3	3
01	1	1	1	01	4	4	4	51	3	2	5	51	6	3	2
02	2	1	1	02	4	4	3	52	4	2	5	52	6	3	1
03	3	1	1	03	4	4	2	53	5	2	5	53	6	3	6
04	4	1	1	04	4	4	1	54	6	2	5	54	6	3	5
05	5	1	1	05	4	4	6	55	1	2	4	55	1	3	4
06	6	1	1	06	4	4	5	56	2	2	4	56	1	3	3
07	1	1	6	07	5	4	4	57	3	2	4	57	1	3	2
08	2	1	6	08	5	4	3	58	4	2	4	58	1	3	1
09	3	1	6	09	5	4	2	59	5	2	4	59	1	3	6
10	4	1	6	10	5	4	1	60	6	2	4	60	1	3	5
11	5	1	6	11	5	4	6	61	1	2	3	61	2	3	4
12	6	1	6	12	5	4	5	62	2	2	3	62	2	3	3
13	1	1	5	13	6	4	4	63	3	2	3	63	2	3	2
14	2	1	5	14	6	4	3	64	4	2	3	64	2	3	1
15	3	1	5	15	6	4	2	65	5	2	3	65	2	3	6
16	4	1	5	16	6	4	1	66	6	2	3	66	2	3	5
17	5	1	5	17	6	4	6	67	1	2	2	67	3	3	4
18	6	1	5	18	6	4	5	68	2	2	2	68	3	3	3
19	1	1	4	19	1	4	4	69	3	2	2	69	3	3	2
20	2	1	4	20	1	4	3	70	4	2	2	70	3	3	1
21	3	1	4	21	1	4	2	71	5	2	2	71	3	3	6
22	4	1	4	22	1	4	1	72	6	2	2	72	3	3	5
23	5	1	4	23	1	4	6	73	1	3	1	73	4	2	4
24	6	1	4	24	1	4	5	74	2	3	1	74	4	2	3
25	1	1	3	25	2	4	4	75	3	3	1	75	4	2	2
26	2	1	3	26	2	4	3	76	4	3	1	76	4	2	1
27	3	1	3	27	2	4	2	77	5	3	1	77	4	2	6
28	4	1	3	28	2	4	1	78	6	3	1	78	4	2	5
29	5	1	3	29	2	4	6	79	1	3	6	79	5	2	4
30	6	1	3	30	2	4	5	80	2	3	6	80	5	2	3
31	1	1	2	31	3	4	4	81	3	3	6	81	5	2	2
32	2	1	2	32	3	4	3	82	4	3	6	82	5	2	1
33	3	1	2	33	3	4	2	83	5	3	6	83	5	2	6
34	4	1	2	34	3	4	1	84	6	3	6	84	5	2	5
35	5	1	2	35	3	4	6	85	1	3	5	85	6	2	4
36	6	1	2	36	3	4	5	86	2	3	5	86	6	2	3
37	1	2	1	37	4	3	4	87	3	3	5	87	6	2	2
38	2	2	1	38	4	3	3	88	4	3	5	88	6	2	1
39	3	2	1	39	4	3	2	89	5	3	5	89	6	2	6
40	4	2	1	40	4	3	1	90	6	3	5	90	6	2	5
41	5	2	1	41	4	3	6	91	1	3	4	91	1	2	4
42	6	2	1	42	4	3	5	92	2	3	4	92	1	2	3
43	1	2	6	43	5	3	4	93	3	3	4	93	1	2	2
44	2	2	6	44	5	3	3	94	4	3	4	94	1	2	1
45	3	2	6	45	5	3	2	95	5	3	4	95	1	2	6
46	4	2	6	46	5	3	1	96	6	3	4	96	1	2	5
47	5	2	6	47	5	3	6	97	1	3	3	97	2	2	4
48	6	2	6	48	5	3	5	98	2	3	3	98	2	2	3
49	1	2	5	49	6	3	4	99	3	3	3	99	2	2	2



**FIGURE 2 - PHYSICAL DIMENSIONS (CONTINUED)**

FIGURE 2(d) - INSERT COMBINATION CODE

SHELL SIZE 2

CODE	SHELL SIZE	INSERT CAVITIES	
		CONTACT ARRANGEMENT	
		A	B
201	2	1 - 150	2 - 34
203	2	1 - 126	2 - 100
216	2	1 - 150	2 - 100
231	2	1 - 24	2 - 0
232	2	1 - 24	2 - 34
237	2	1 - 24	2 - 100

SHELL SIZE 3

CODE	SHELL SIZE	INSERT CAVITIES			
		CONTACT ARRANGEMENT			
		A	B	C	D
006	3	1 - 60	2 - 100	1 - 60	2 - 100
007	3	1 - 150	2 - 100	1 - 150	2 - 100
008	3	1 - 60	2 - 34	1 - 60	2 - 34
226	3	1 - 150	2 - 34	1 - 150	2 - 34
233	3	1 - 150	2 - 34	1 - 150	2 - 34
239	3	1 - 24	2 - 34	1 - 24	2 - 34
243	3	1 - 60	2 - 34	1 - 24	2 - 34

SHELL SIZE 4

CODE	SHELL SIZE	INSERT CAVITIES					
		CONTACT ARRANGEMENT					
		A	B	C	D	E	F
220	4	1 - 150	2 - 100	1 - 150	2 - 100	1 - 150	2 - 100
241	4	1 - 24	2 - 34	1 - 24	2 - 34	1 - 24	2 - 34
244	4	1 - 60	2 - 34	1 - 60	2 - 34	1 - 24	2 - 34

**3. TERMS, DEFINITIONS, ABBREVIATIONS, SYMBOLS AND UNITS**

For the purpose of this specification, the terms, definitions, abbreviations, symbols and units specified in ESA/SCC Basic Specification No. 21300 shall apply.

**4. REQUIREMENTS****4.1 GENERAL**

The complete requirements for procurement of the connectors specified herein are stated in this specification and ESA/SCC Generic Specification No. 3401. Deviations from the Generic Specification, applicable to this specification only, are listed in Para. 4.2.

Deviations from the applicable Generic Specification and this Detail Specification, formally agreed with specific Manufacturers on the basis that the alternative requirements are equivalent to the ESA/SCC requirements and do not affect the components' reliability, are listed in the appendices attached to this specification.

**4.2 DEVIATIONS FROM GENERIC SPECIFICATION****4.2.1 Deviations from Special In-process Controls**

None.

**4.2.2 Deviations from Final Production Tests (Chart II)**

(a) Para. 9.5, Magnetism Level: Not applicable.

**4.2.3 Deviations from Burn-in and Electrical Measurements (Chart III)**

Not applicable.

**4.2.4 Deviations from Qualification Tests (Chart IV)**

(a) Para. 9.12.1, Shock: 30g, 11 milliseconds, half sine wave.

(b) Para. 9.24, Jackscrew Retention: Not applicable.

**4.2.5 Deviations from Lot Acceptance Tests (Chart V)**

The same deviations as listed in Para. 4.2.4 above are applicable.

**4.3 MECHANICAL REQUIREMENTS****4.3.1 Dimension Check**

The dimensions of the connectors specified herein shall be verified in accordance with the requirements set out in Para. 9.6 of ESA/SCC Generic Specification 3401 and shall conform to those shown in Figure 2 of this specification.

**4.3.2 Weight**

The maximum weight of the connectors specified herein, without contacts, shall be as specified in Table 1(a).

**4.3.3 Contact Capability**

As specified in ESA/SCC Detail Specification No. 3401/061.



**4.3.4 Contact Retention (in Insert)**

As specified in ESA/SCC Detail Specification No. 3401/061.

**4.3.5 Mating and Unmating Forces**

The forces applied for mating and unmating of the connectors shall conform to the values specified in Table 1(a).

**4.3.6 Insert Retention (in Shell)**

Connector inserts shall withstand a force of 200N without being dislodged from the shell.

**4.3.7 Jackscrew Retention**

Not applicable.

**4.3.8 Contact Insertion and Withdrawal Forces**

As specified in ESA/SCC Detail Specification No. 3401/061.

**4.3.9 Engagement and Separation Forces**

As specified in ESA/SCC Detail Specification No. 3401/061.

**4.3.10 Oversize Pin Exclusion**

As specified in ESA/SCC Detail Specification No. 3401/061.

**4.3.11 Probe Damage**

As specified in ESA/SCC Detail Specification No. 3401/061.

**4.3.12 Solderability**

Not applicable.

**4.4 MATERIALS AND FINISHES**

The materials and finishes shall be as specified herein. Where a definite material is not specified, a material which will enable the connectors specified herein to meet the performance requirements of this specification shall be used. Acceptance or approval of any constituent material does not guarantee acceptance of the finished product.

**4.4.1 Shell**

The shell shall be made of aluminium alloy, bright electroless nickel plated.

**4.4.2 Inserts**

Bonded sandwich: Silicone/thermosetting or thermoplastic insert/silicone.

**4.4.3 Contacts**

As specified in ESA/SCC Detail Specification No. 3401/061.

**4.4.4 Contact Retaining Clip**

The retaining clip shall be made of beryllium copper.

**4.4.5 Guiding and Locking Devices**

The insert retention plate shall be made of blue anodized aluminium alloy. The screening ring shall be made of copper alloy with plating. The screws shall be made of passivated stainless steel.



4.4.6 Magnetism Level

Not applicable.

4.5 MARKING

4.5.1 General

The marking of all components delivered to this specification shall be in accordance with the requirements of ESA/SCC Basic Specification No. 21700. Each component shall be marked in respect of:-

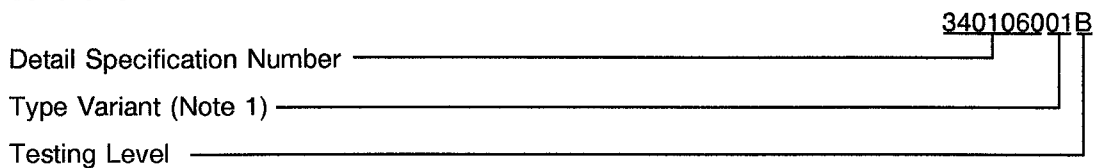
- (a) Contact Identification.
- (b) The SCC Component Number.
- (c) Characteristics.
- (d) Traceability Information.

4.5.2 Contact Identification

Contact identification shall be marked in accordance with Figure 2(b).

4.5.3 The SCC Component Number

Each component shall bear the SCC Component Number which shall be constituted and marked as follows:



**NOTES**

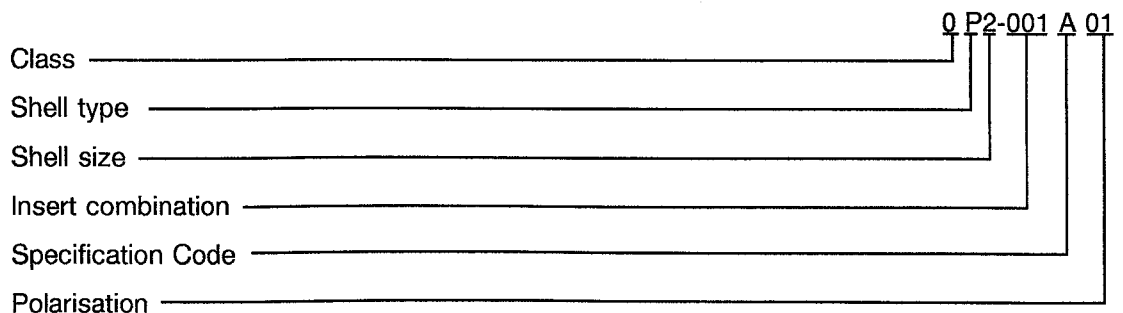
- 1. Marking of the type variant number is mandatory. No further reference to type variant is made in this specification.

4.5.4 Characteristics

The characteristics to be marked in the following order of precedence are:-

- (a) Shell type.
- (b) Shell size.
- (c) Insert combination.
- (d) Specification Code.
- (e) Polarisation.

The information shall be constituted and marked as follows:-





#### 4.5.4.1 Class

0: Sealed.

#### 4.5.4.2 Shell Type

P: Rack plug.

R: Equipment receptacle.

#### 4.5.4.3 Shell Size

See Figure 2(a).

#### 4.5.4.4 Insert Combination

See Figures 2(d) and 2(b).

#### 4.5.4.5 Specification Code

A: Standard Connector.

#### 4.5.4.6 Polarisation

See Figure 2(c).

#### 4.5.5 Traceability Information

Traceability information shall be marked in accordance with the requirements of ESA/SCC Basic Specification No. 21700.

#### 4.5.6 Marking of Small Components

Where it is considered that a component is too small to accommodate the marking as specified above, as much as space permits shall be marked. The order of precedence shall be as specified in Para. 4.5.1. The marking information in full shall accompany each component in its primary package.

### 4.6 ELECTRICAL MEASUREMENTS

#### 4.6.1 Electrical Measurements at Room Temperature

The parameters to be measured in respect of electrical characteristics are scheduled in Table 2. Unless otherwise specified, these measurements shall be performed at  $T_{amb} = +22 \pm 3$  °C.

#### 4.6.2 Electrical Measurements at High and Low Temperatures (Table 3)

Not applicable.

#### 4.6.3 Circuit for Electrical Measurements (Figure 4)

Not applicable.

#### 4.7 BURN-IN AND ELECTRICAL MEASUREMENTS (TABLES 4 AND 5)

Not applicable.

**TABLE 2 - ELECTRICAL MEASUREMENTS AT ROOM TEMPERATURE**

No.	CHARACTERISTIC	SYMBOL	ESA/SCC No. 3401 TEST METHOD	TEST CONDITION	LIMITS		UNIT
					MIN.	MAX.	
1	Insulation Resistance	Ri	Para. 9.1.1.1	Para. 9.1.1.1	5000	-	MΩ
2	Voltage Proof Leakage Current Contact size 22 Other contacts	$I_L$	Para. 9.1.1.2	1300Vrms 1500Vrms	- -	1.0 1.0	mA
3	Mated Shell Conductivity (Voltage Drop)	Vd	Para. 9.1.1.4	Para. 9.1.1.4	-	2.5	mV

**TABLES 3, 4 AND 5**

Not applicable.

4.8 ENVIRONMENTAL AND ENDURANCE TESTS (CHARTS IV AND V OF ESA/SCC GENERIC SPECIFICATION NO. 3401)

4.8.1 Measurements and Inspections on Completion of Environmental Tests

The parameters to be measured and inspections to be performed on completion of environmental testing shall be those specified in Table 6. Unless otherwise specified, the measurements shall be performed at  $T_{amb} = +22 \pm 3$  °C.

4.8.2 Measurements and Inspections at Intermediate Points during Endurance Tests

Not applicable.

4.8.3 Measurements and Inspections on Completion of Endurance Tests

The parameters to be measured and inspections to be performed on completion of endurance tests shall be those specified in Table 6. Unless otherwise specified, the measurements shall be performed at  $T_{amb} = +22 \pm 3$  °C.

4.8.4 Conditions for Operating Life Tests (Part of Endurance Testing)

Not applicable.

4.8.5 Electrical Circuits for Operating Life Tests

Not applicable.

4.8.6 Conditions for High Temperature Storage Test (Part of Endurance Testing)

The requirements for the high temperature storage test are specified in Section 9 of ESA/SCC Generic Specification No. 3401. The conditions for high temperature storage testing shall be the maximum storage temperature specified in Table 1(b) of this specification.





**TABLE 6 - MEASUREMENTS AND INSPECTIONS ON COMPLETION OF ENVIRONMENTAL AND ENDURANCE TESTS**

NO.	ESA/SCC GENERIC NO. 3401		MEASUREMENTS AND INSPECTIONS		SYMBOL	LIMITS		UNIT
	ENVIRONMENTAL AND ENDURANCE TESTS (1)	TEST METHOD AND CONDITIONS	IDENTIFICATION	CONDITIONS		MIN	MAX	
11	Permanence of Marking	Para. 9.19	As applicable		-	-	-	
12	Mating/Unmating Forces	Para. 9.20	Force		F	Para. 4.3.5 of this spec.		
13	High Temperature Storage	Para. 9.21	<b>Initial</b> Low Level Contact Resis. Mated Shell Conductivity <b>Final</b> Visual Examination Mating/Unmating Forces  Low Level Contact Resistance Drift Rated Current Contact Resis. Mated Shell Conductivity Insulation Resistance Voltage Proof Leakage Curr. Contact Retention (in insert)	ESA/SCC 3401/061 Table 2 Item 3  -  ESA/SCC 3401/061  ESA/SCC 3401/061 Table 2 Item 3 Table 2 Item 1 Table 2 Item 2 Para. 4.3.4 of this spec.	Rcl Vd  - F  ΔRcl  Rcr Vd Ri I <sub>L</sub>	Record Values Table 2 Item 3  - - Para. 4.3.5 of this spec. ESA/SCC 3401/061  ESA/SCC 3401/061 Table 2 Item 3 Table 2 Item 1 Table 2 Item 2 ESA/SCC 3401 Para. 9.17		
14	Corrosion	Para. 9.22	Visual Examination	-	-	-	-	
15	Insert Retention (in shell)	Para. 9.23 & Para. 4.3.6 of this spec.	Visual Examination	-	-	Para. 4.3.6		
16	Jackscrew Retention	Para. 9.24 & Para. 4.3.7 of this spec.	Visual Examination	-	-	Not applicable		
17	High Temperature Measurements	Para. 9.25	Insulation Resistance	Table 2 Item 1	Ri	500	-	MΩ

**NOTES**

1. The tests in this table refer to either Chart IV or V and shall be used as applicable.



**SCC**

ESA/SCC Detail Specification  
No. 3401/060

Rev. 'A'

PAGE 29

ISSUE 1

**TABLE 6 - MEASUREMENTS AND INSPECTIONS ON COMPLETION OF ENVIRONMENTAL AND ENDURANCE TESTS**

NO.	ESA/SCC GENERIC NO. 3401		MEASUREMENTS AND INSPECTIONS		SYMBOL	LIMITS		UNIT
	ENVIRONMENTAL AND ENDURANCE TESTS (1)	TEST METHOD AND CONDITIONS	IDENTIFICATION	CONDITIONS		MIN	MAX	
18	Overload Test	Para. 9.26	Internal Temperature Rated Current Contact Resis. Mated Shell Conductivity Insulation Resistance Voltage Proof Leakage Curr.	ESA/SCC 3401/061 Table 2 Item 3 Table 2 Item 1 Table 2 Item 2	T Rcr Vd Ri IL	-	+ 100	°C
19	Maintenance Aging	Para. 9.27	Visual Examination Contact Retention  Contact Insertion & Withdrawal Forces	- Para. 4.3.4 of this spec Para. 4.3.8 of this spec	-	-	-	-
20	Engage/Separation Forces	Para. 9.28 & Para. 4.3.9 of this spec.	Force				Para. 4.3.9	
21	Oversize Pin Exclusion	Para. 9.29 & Para. 4.3.10 of this spec.					ESA/SCC 3401 Para. 9.29	
22	Probe Damage	Para. 9.30 & Para. 4.3.11 of this spec.	Contact Separation Force	Para. 4.3.9 of this spec.			Para. 4.3.9	
23	Solderability	Para. 9.31 & Para. 4.3.12 of this spec.					Para. 4.3.12	

**NOTES**

1. The tests in this table refer to either Chart IV or V and shall be used as applicable.