

2 DEC 1996

RVT

on flight by LOCKHEED  
MARTIN

TEST REPORT FOR: TECHNOLOGICA

|                       |     |  |
|-----------------------|-----|--|
| E.O. No.              | --- | MM96008  |
| VTP #                 | --- | 364-003/RAD  |
| Job No.               | --- | 136358-2   |
| COMPONENT TYPE        | --- | A/D CONVERTER  |
| Customer Part No.     | --- | PO-PL-TLG-PL-2043  |
| Generic Part No.      | --- | CS5101A  |
| Quantity              | --- | 5 ea.  |
| PRIMARY SPEC          | --- | QS-046-143   |
| Spec. No. (SECONDARY) | --- | ENVISAT-1 NO. PO-PL-TLG-PL-2043<br>(GENERAL SPEC. -500) REV A. |
| Date                  | --- | OCTOBER 28, 1996   |
| SERIAL # RANGE        | --- | 076-080  |
| RAD HARD LEVEL        | --- | 30 K RAD   |
| TOTAL NO. OF PAGES    | --- | 193  |

*Paul McChesney*  
QA  
PAUL MCCHESENEY

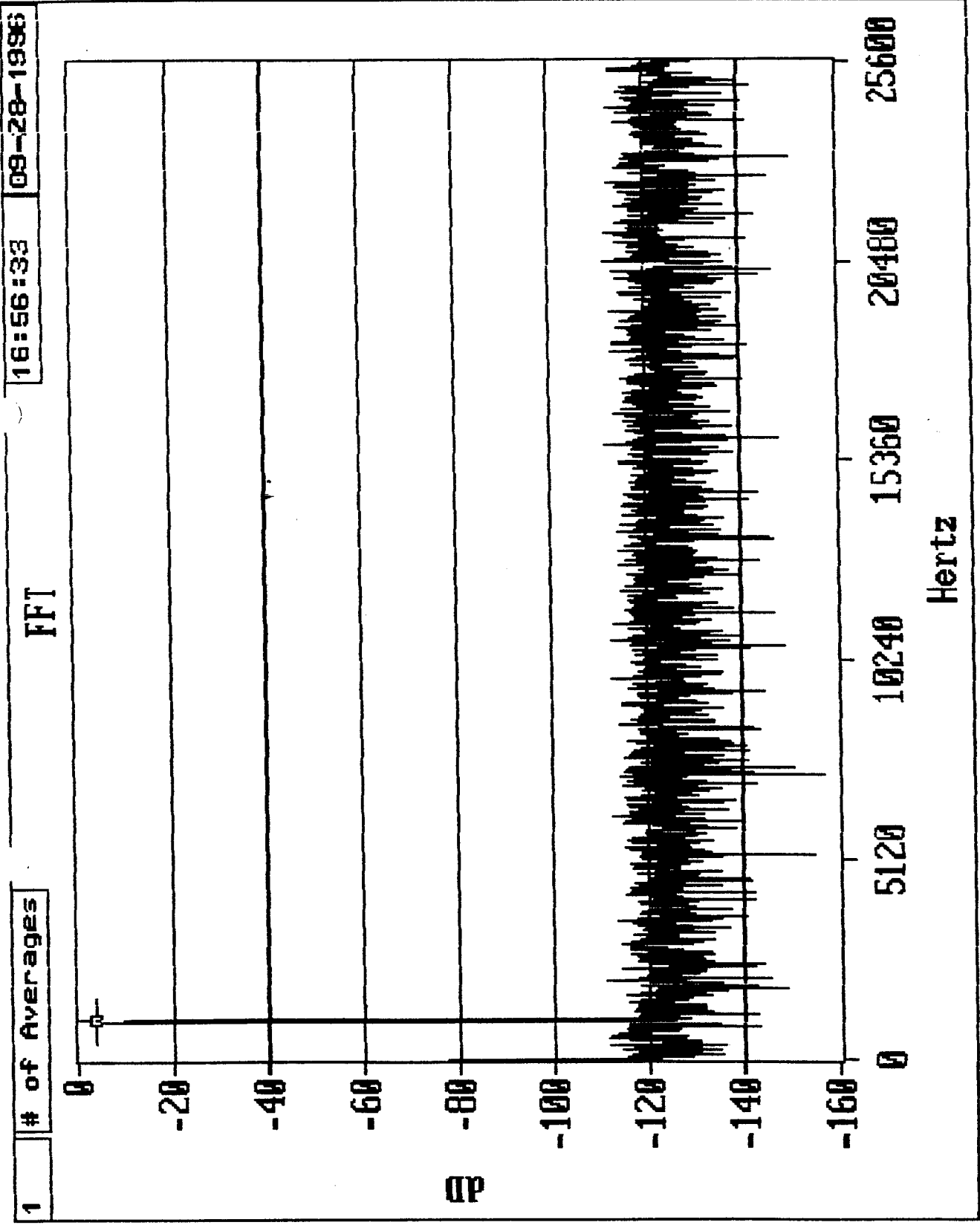
*Chuck Cegelski*  
ENGINEERING MANAGER  
CHUCK CEGELSKI

CONTINENTAL / VIKING LABORATORIES

TEST HOUSE ADDRESS:

440 NORTH BERNARDO AVENUE  
MOUNTAIN VIEW, CA. 94043.

$\phi$ krad



COLLECT

SAMPL FREQ

51200

S/PM

106.561

S/N+D

84.599

S/D

102.752

S/N

84.624

CONFIG

EXIT

OUTPUT

FREQUENCY 1000.000

MAGNITUDE -3.666

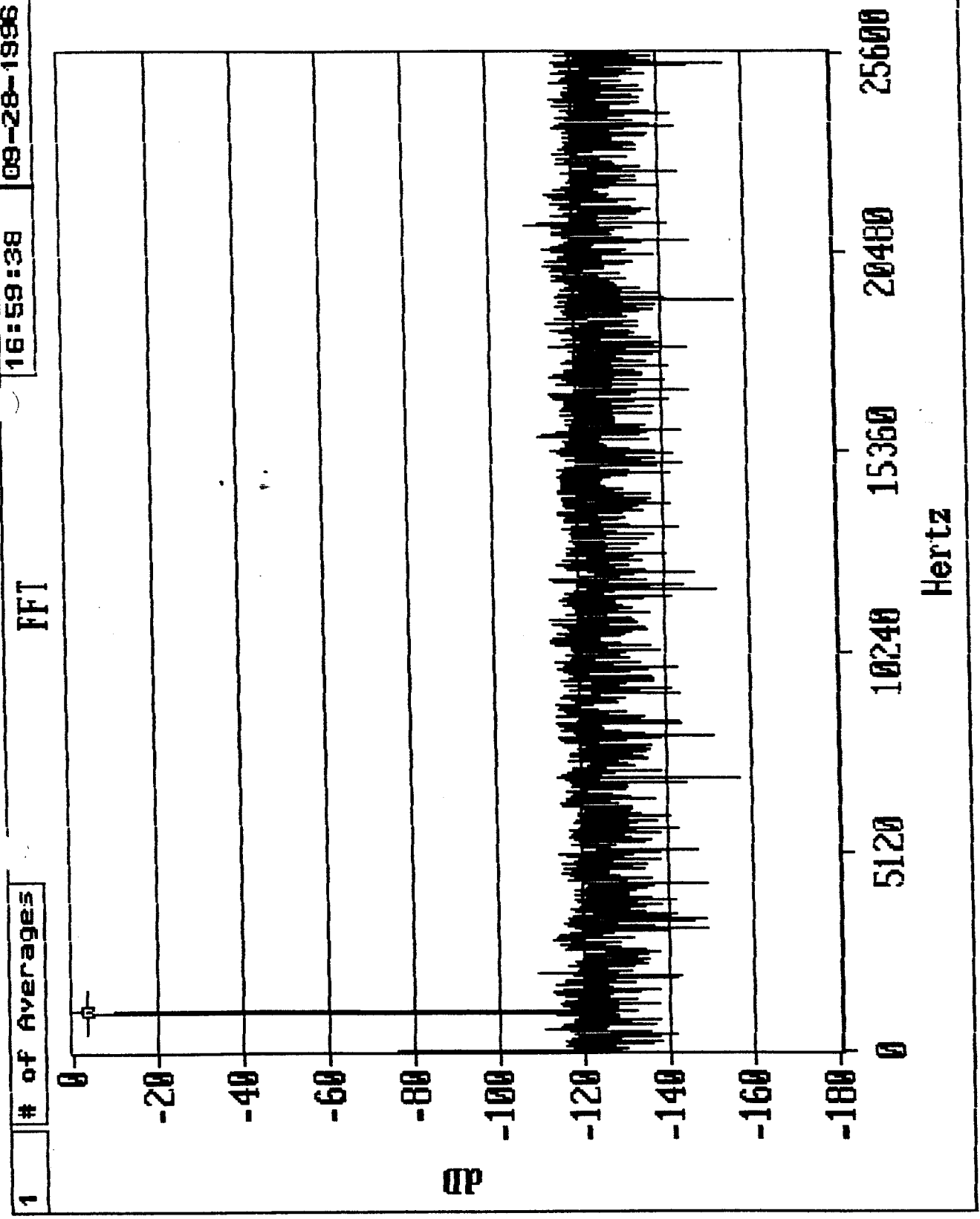
ZOOM

before addition

sn #76

09-28-1996

φKrad



COLLECT

SAMPL FREQ

51200

S/PM

104.759

S/N+D

34.583

S/D

101.486

S/N

34.630

CONFIG

EXIT

FREQUENCY 1000.000

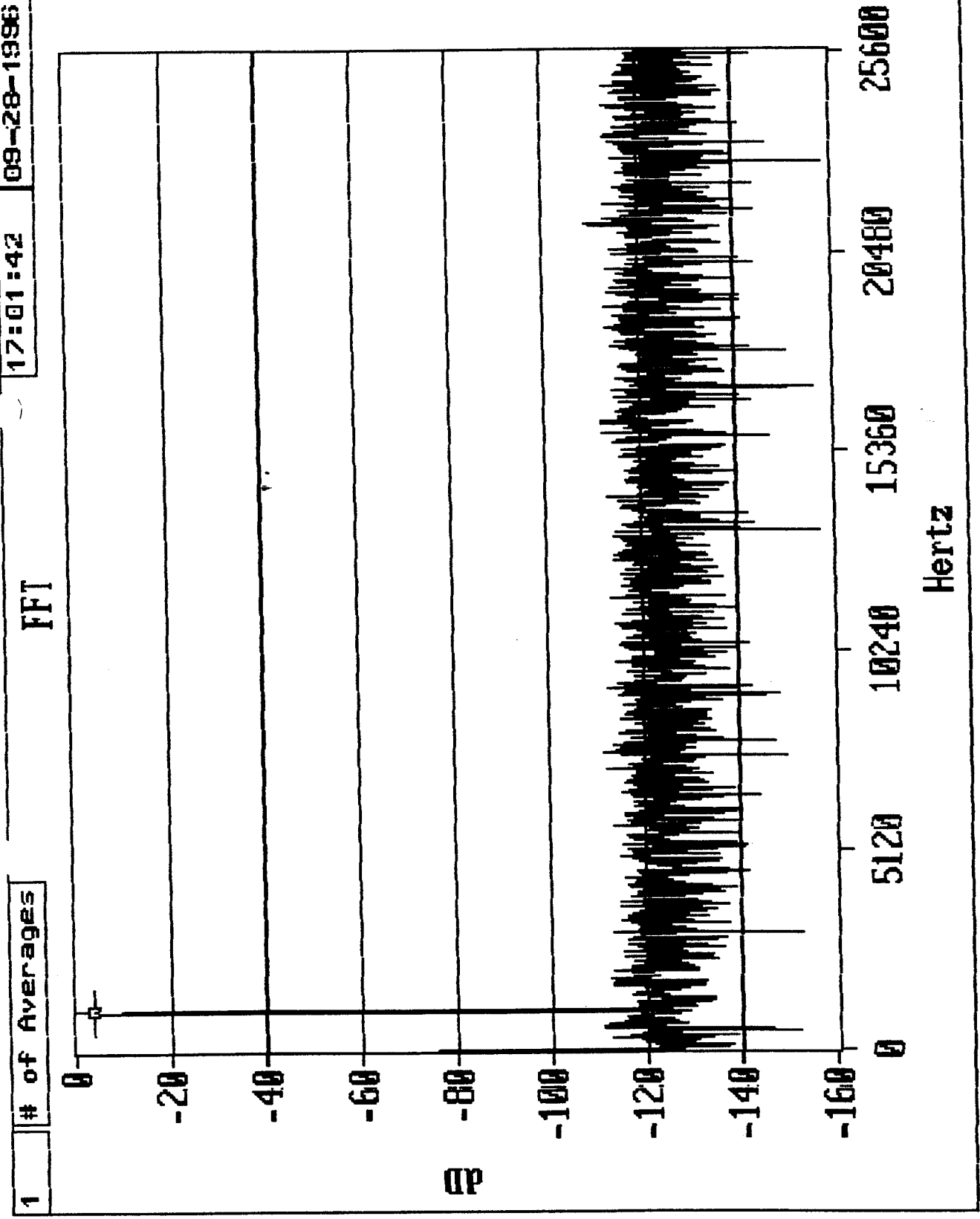
MAGNITUDE -3.663

ZOOM

before

sn # 77

$\phi$ krad



COLLECT

SAMPL FREQ

51200

S/PW

104.534

S/M+D

34.329

S/D

103.233

S/N

34.342

CONFIG

EXIT

OUTPUT

FREQUENCY 1000.000

MAGNITUDE -3.662

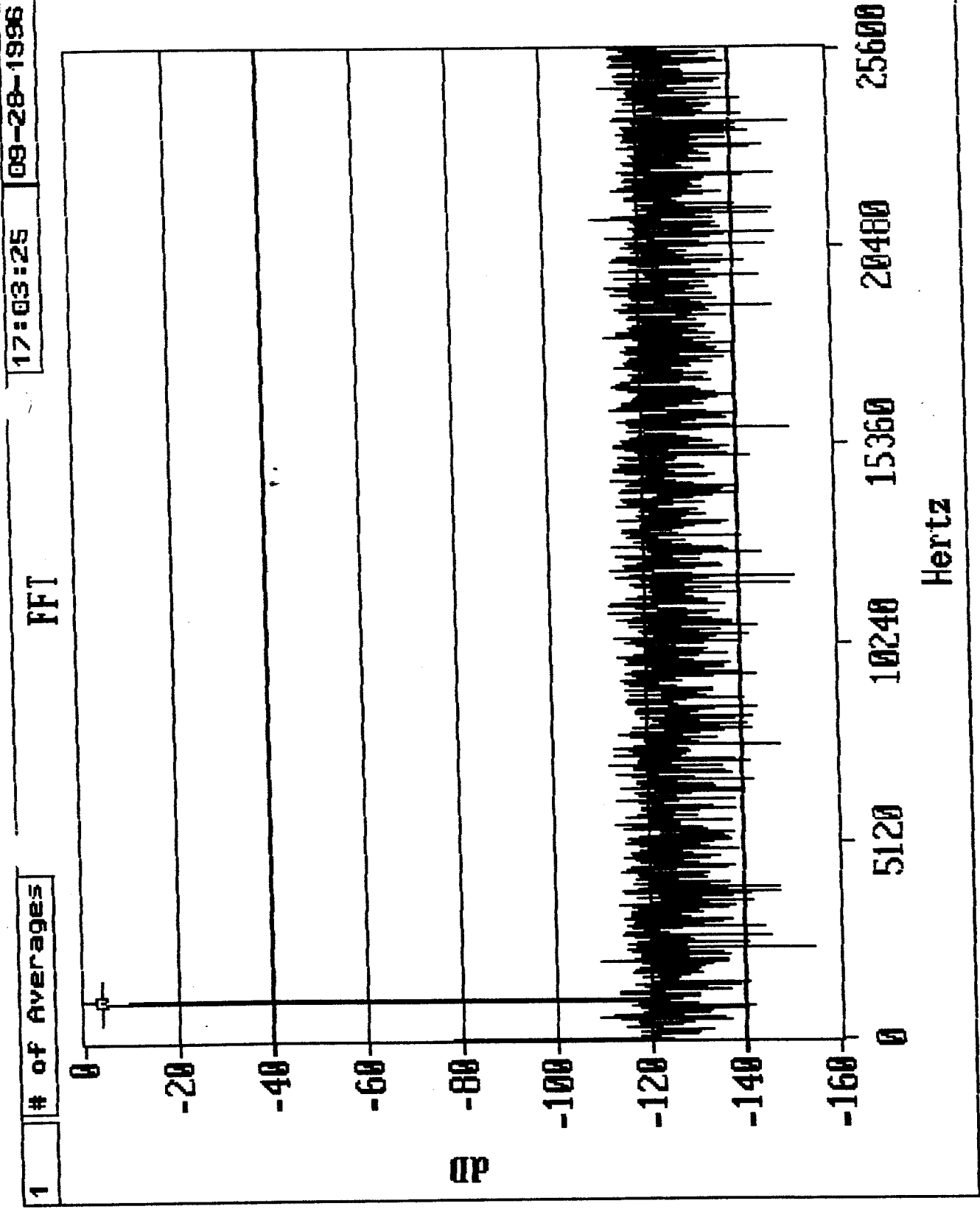
ZOOM

before

sn #78

~ 11/14

$\phi$  Grad



COLLECT

SMPL FREQ

51200

S/PP

104.324

S/N+D

34.627

S/D

102.641

S/N

34.654

CONFIG

EXIT

OUTPUT

FREQUENCY 1000.000

MAGNITUDE -3.661

ZOOM

before

sn #79

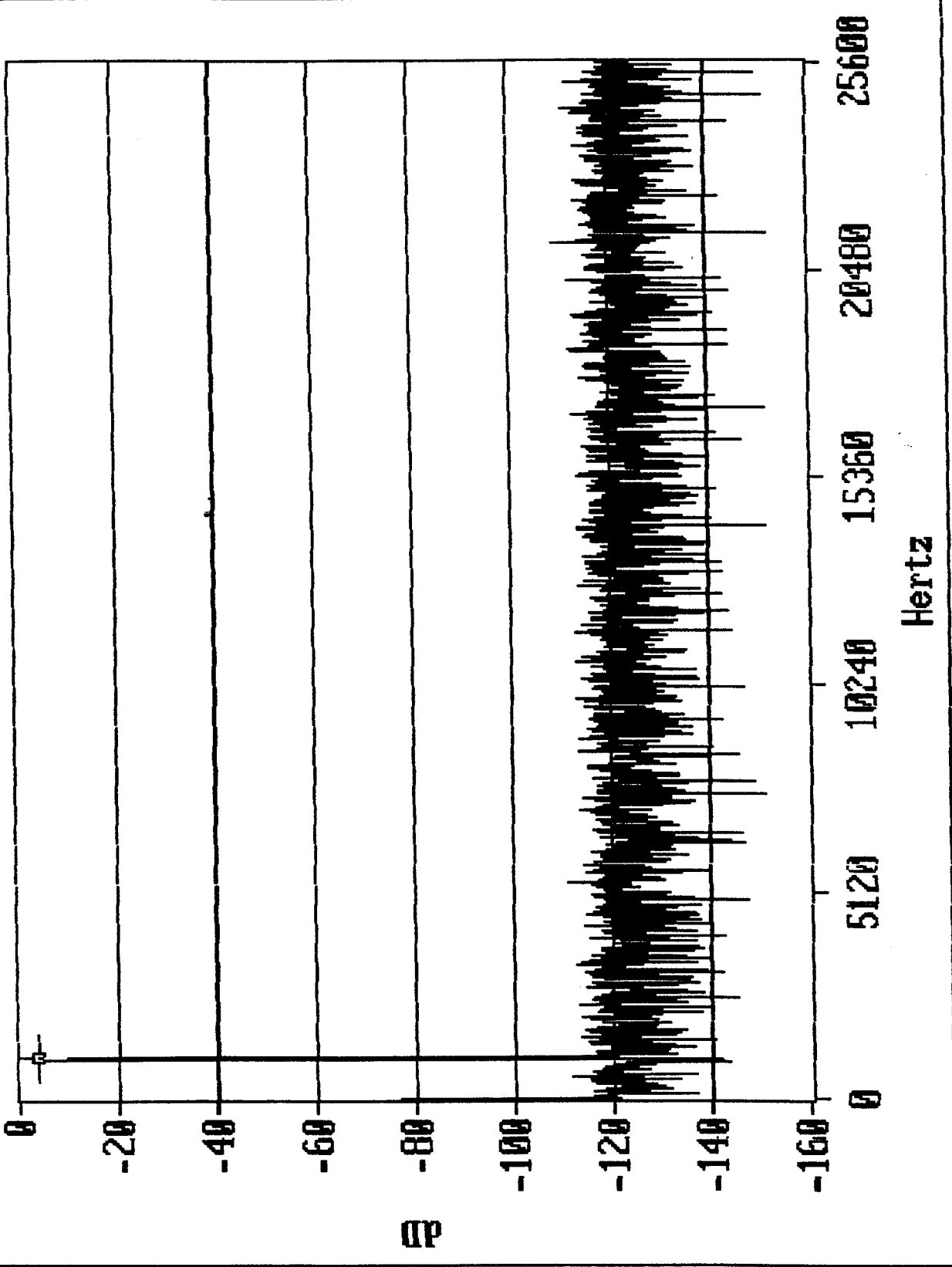
200 N/A

$\phi$ krad

0000 00

1 # of Averages 17:05:37 09-28-1996

FFT



Hertz

ZOOM

MAGNITUDE -3.660

FREQUENCY 1900.000

OUTPUT

be force radiation

COLLECT

SAMPL FREQ  
51200

S/PPW  
104.546

S/N+D  
34.285

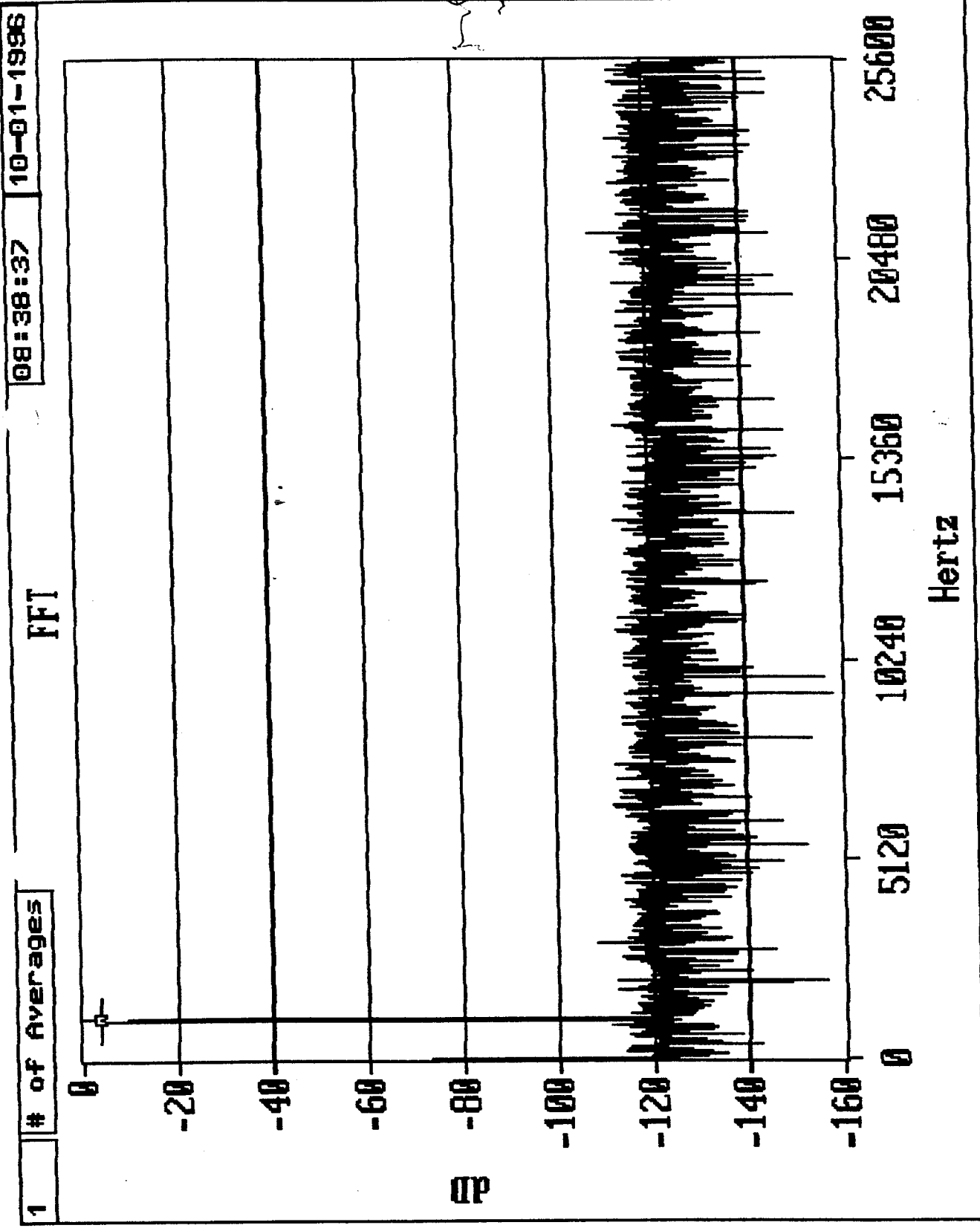
S/D  
103.211

S/N  
34.298

CONFIG

EXIT

7. Skrad



1 # of Averages

08:38:37

10-01-1996

COLLECT

SMPL FREQ

51200

S/PM

103.771

S/N+D

84.342

S/D

101.101

S/N

84.392

CONFIG

EXIT

OUTPUT

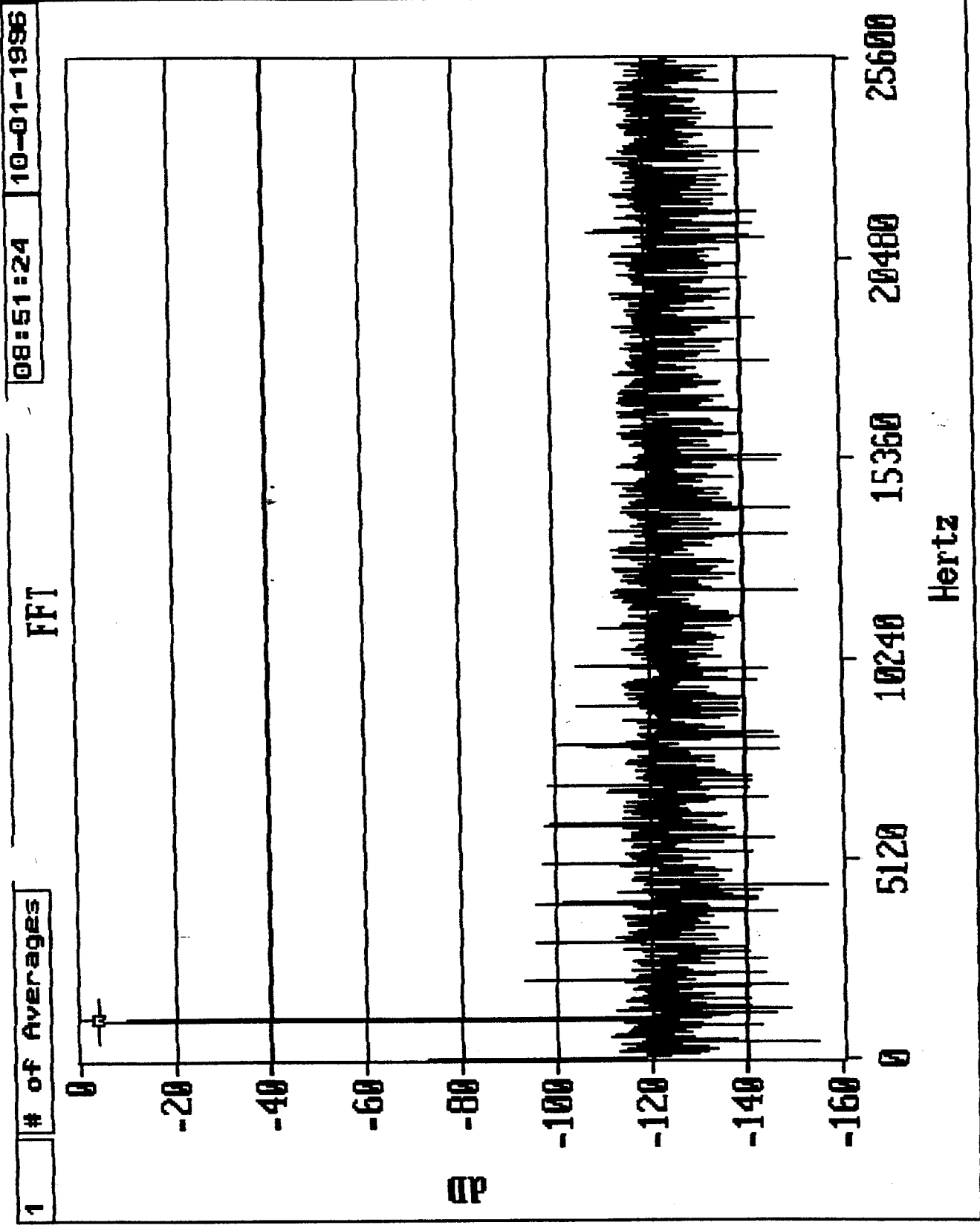
FREQUENCY 1000.000

MAGNITUDE -3.656

ZOOM

initial Control Unit SN#80

F. Skrad



COLLECT

SAMPL FREQ

51200

S/PN

89.382

S/N+D

81.218

S/D

85.466

S/N

83.223

CONFIG

EXIT

OUTPUT

FREQUENCY 1000.000

MAGNITUDE -3.655

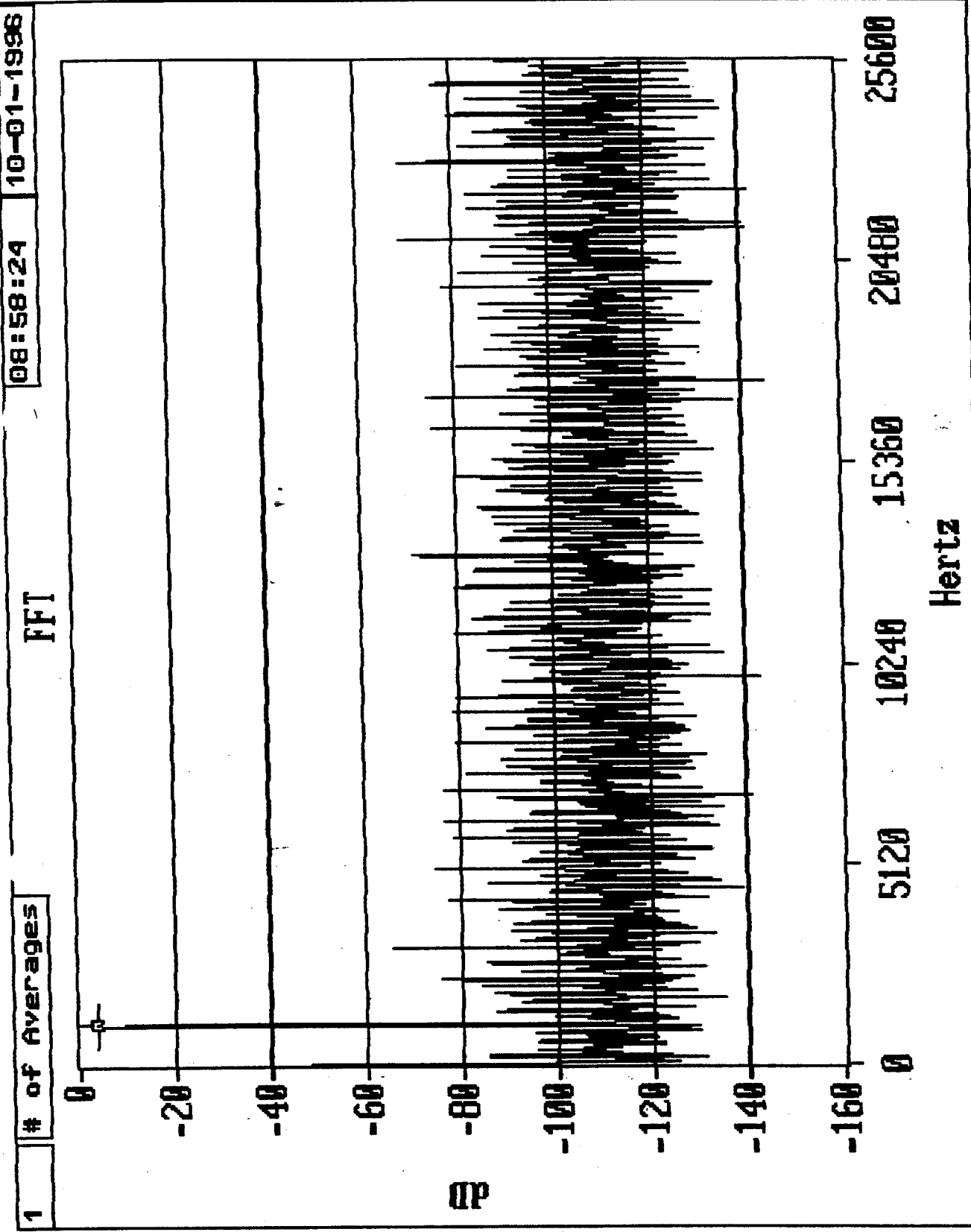
ZOOM

1000.000

2.047%



7. Skrad



COLLECT

SMPL FREQ

51200

S/PW

62.016

S/N+D

55.692

S/D

61.423

S/N

57.000

CONFIG

EXIT

OUTPUT

FREQUENCY 1000.000

MAGNITUDE -3.702

ZOOM

560 (A) 08A

SN# 77

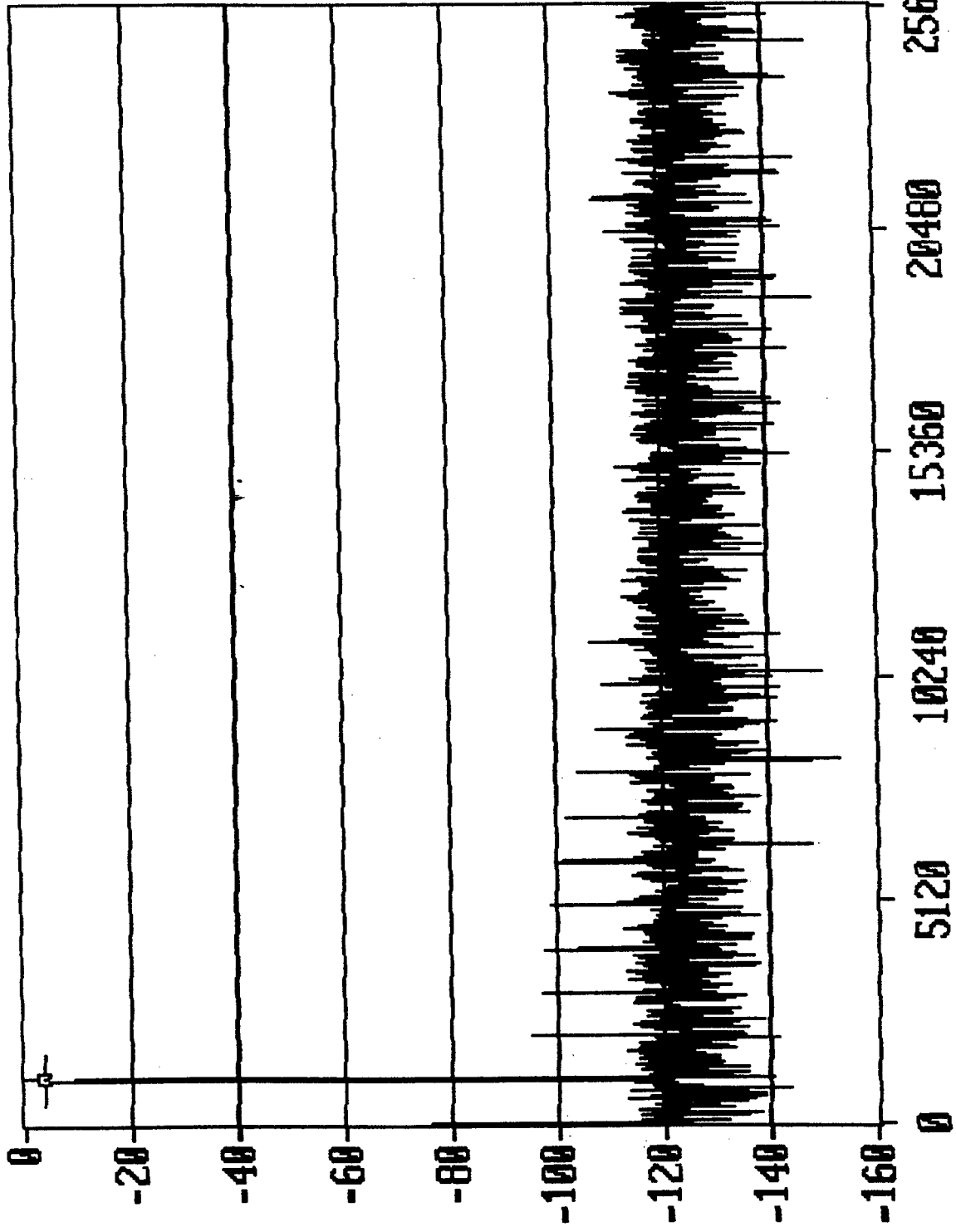
7.5krad

09:08:54 10-01-1986

FFT

# of Averages

1



Hertz

COLLECT

SMPL FREQ

51200

S/PM

91.343

S/N+D

82.070

S/D

87.204

S/N

83.618

CONFIG

EXIT

OUTPUT

FREQUENCY 1000.000

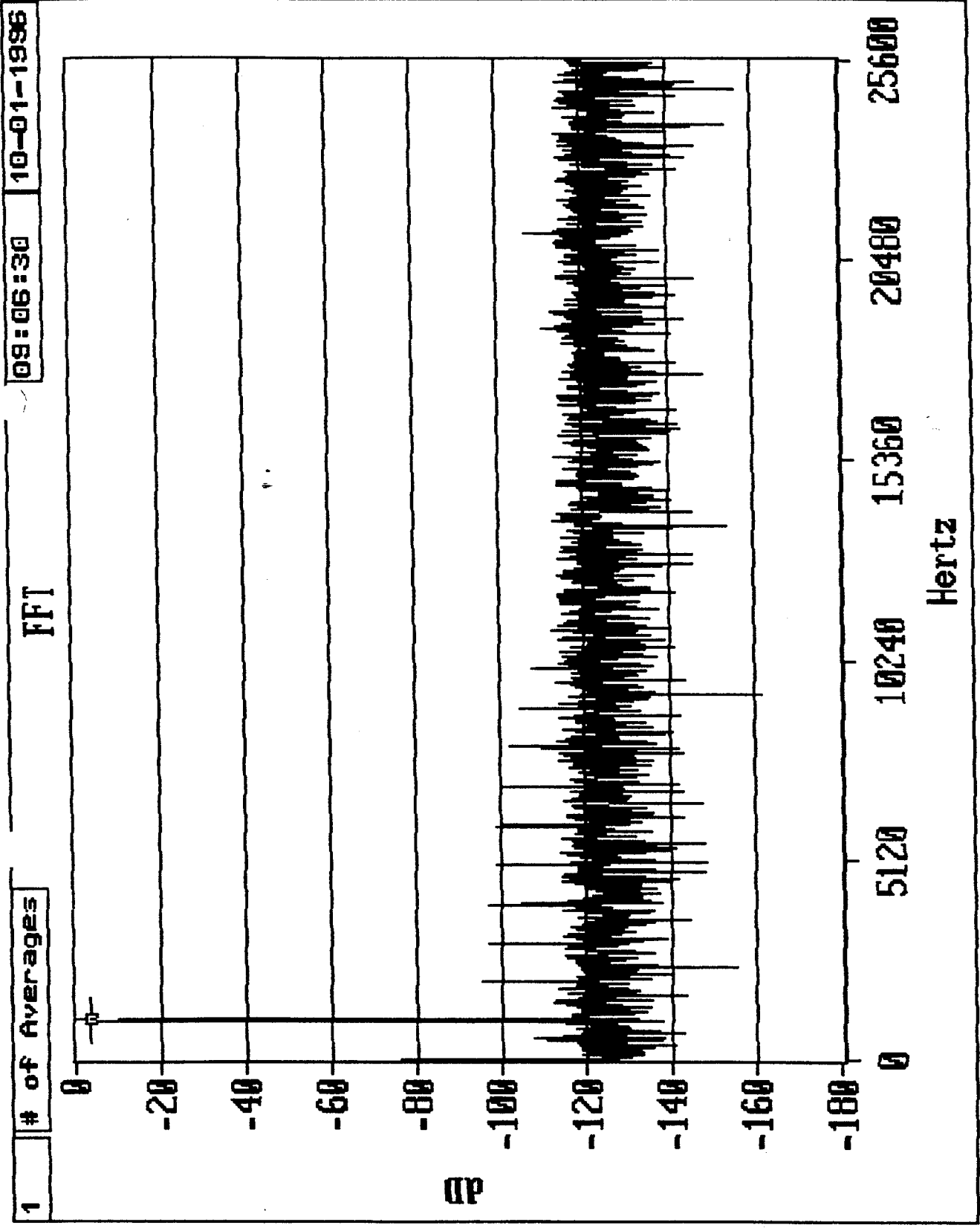
MAGNITUDE -3.653

ZOOM

1.00 00 000

SN# 78

7. Strad



1 # of Averages 09:06:30 10-01-1996

COLLECT

SMPL FREQ  
51200

S/PH  
91.333

S/N+D  
81.955

S/D  
86.983

S/N  
83.550

CONFIG

EXIT

FREQUENCY 1000.000

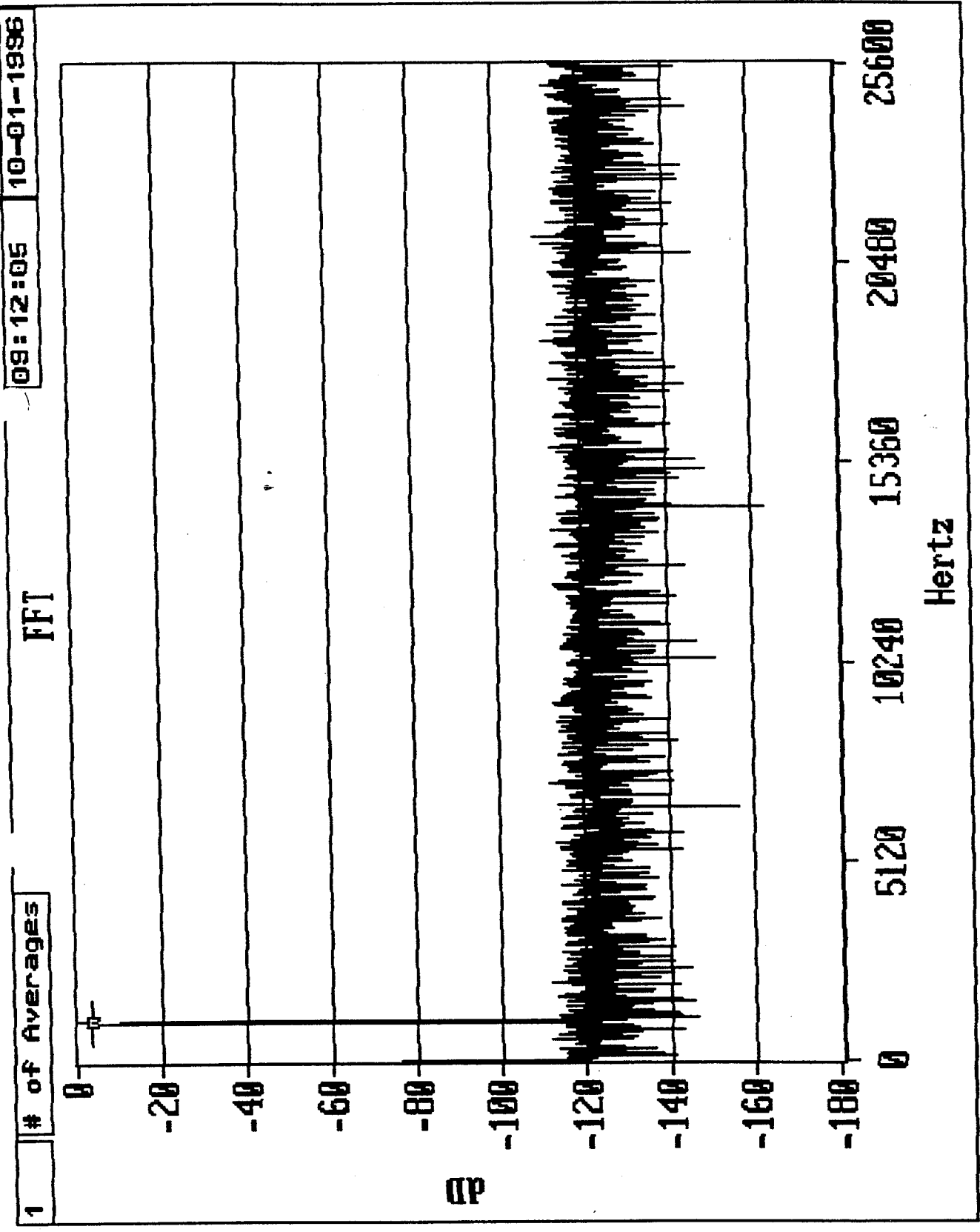
MAGNITUDE -3.653

ZOOM

100 ~ 084

SN# 79

7.5Krad



COLLECT

SMPL FREQ  
51200

S/PN  
103.872

S/N+D  
84.066

S/D  
102.509

S/N  
84.086

CONFIG

EXIT

OUTPUT

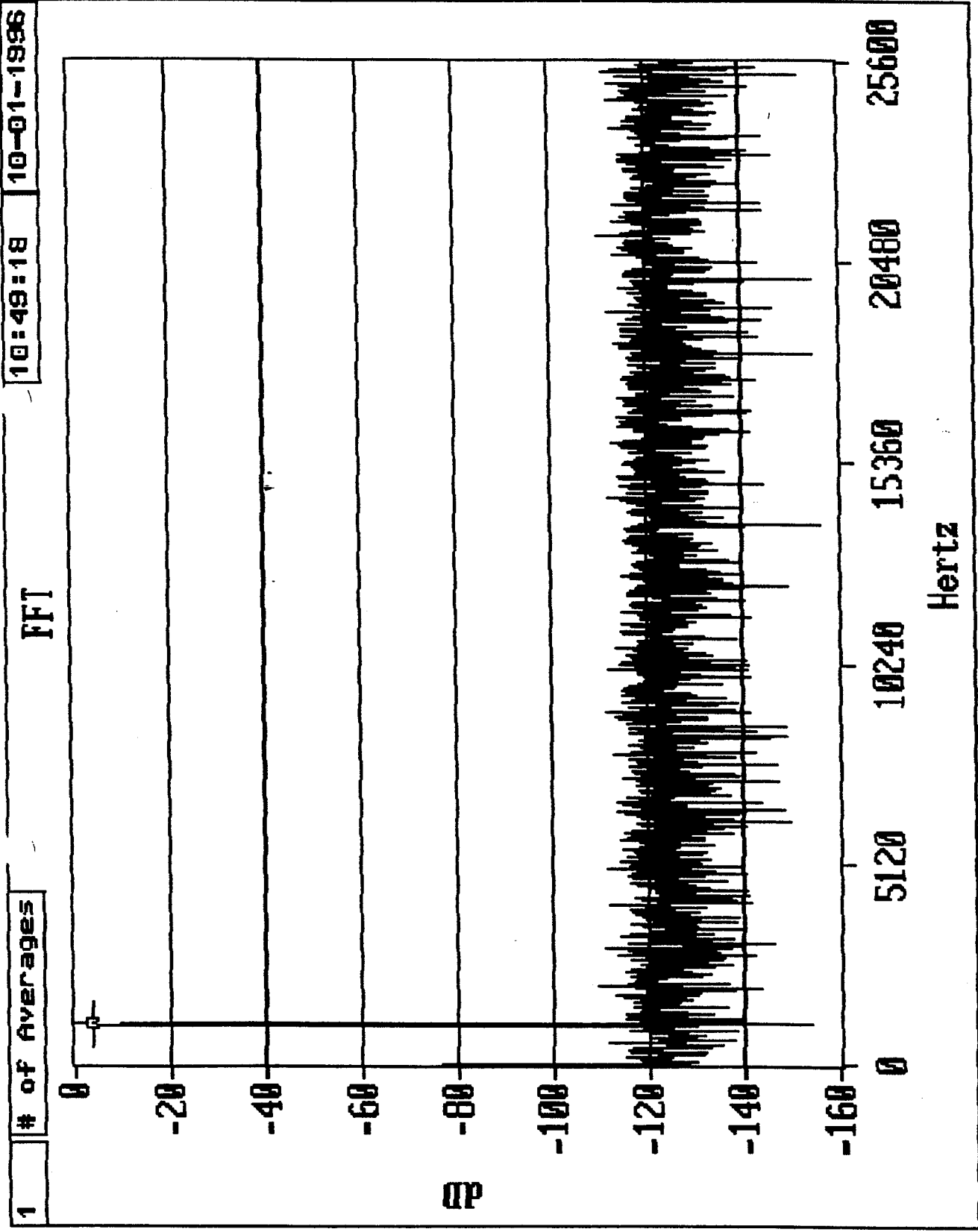
FREQUENCY 1000.000

MAGNITUDE -3.652

ZOOM

East Correlation Unit/101 cur# 500

5krad



COLLECT

SAMPL FREQ

51200

S/PN

103.957

S/N+D

84.233

S/D

99.935

S/N

84.309

CONFIG

EXIT

OUTPUT

FREQUENCY 1000.000

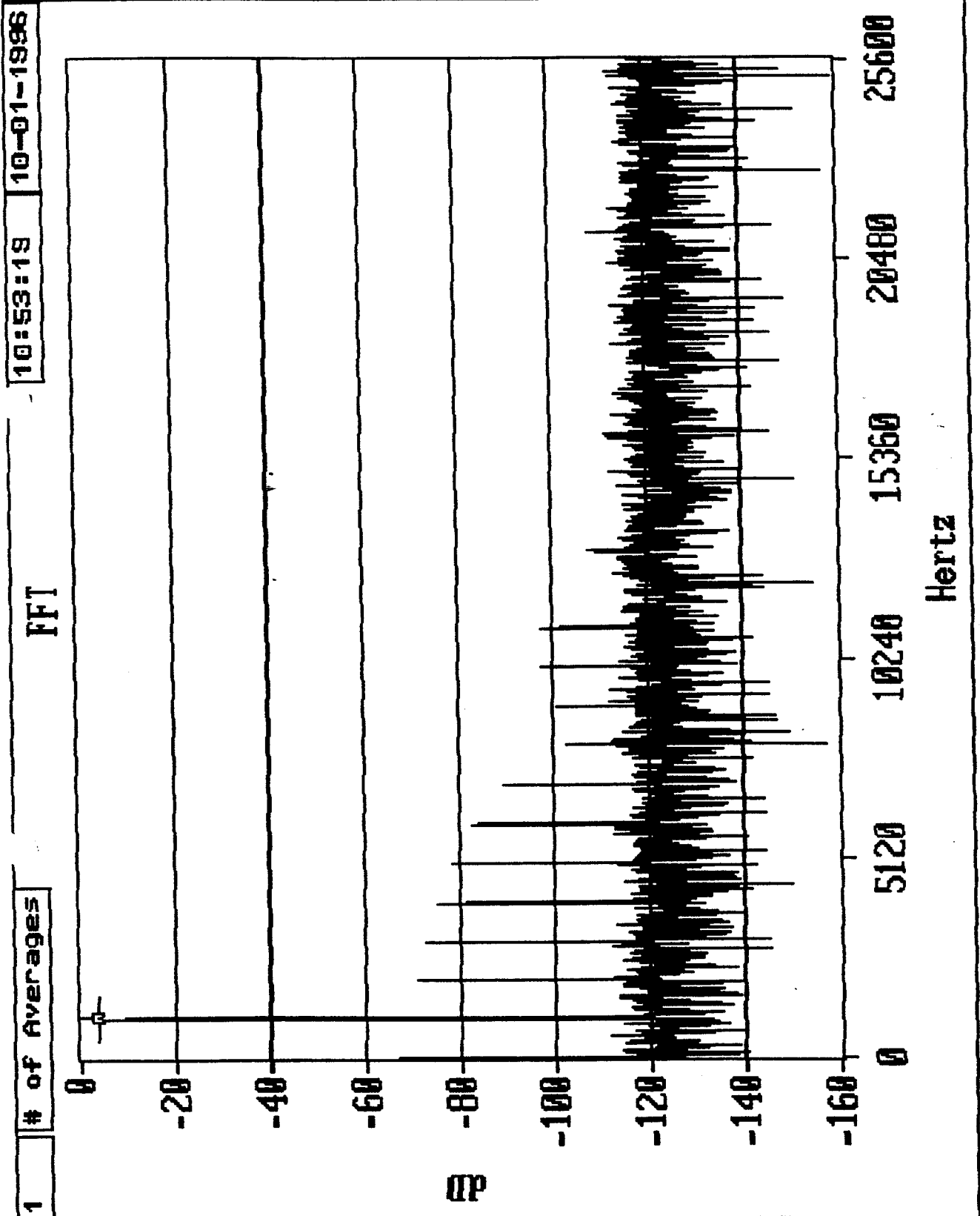
MAGNITUDE -3.650

ZOOM

LSA 10/12/80

Initial of SN#80

Skrad



COLLECT

SAMPL FREQ

51200

S/PP

67.368

S/N+D

63.637

S/D

63.839

S/N

77.020

CONFIG

EXIT

OUTPUT

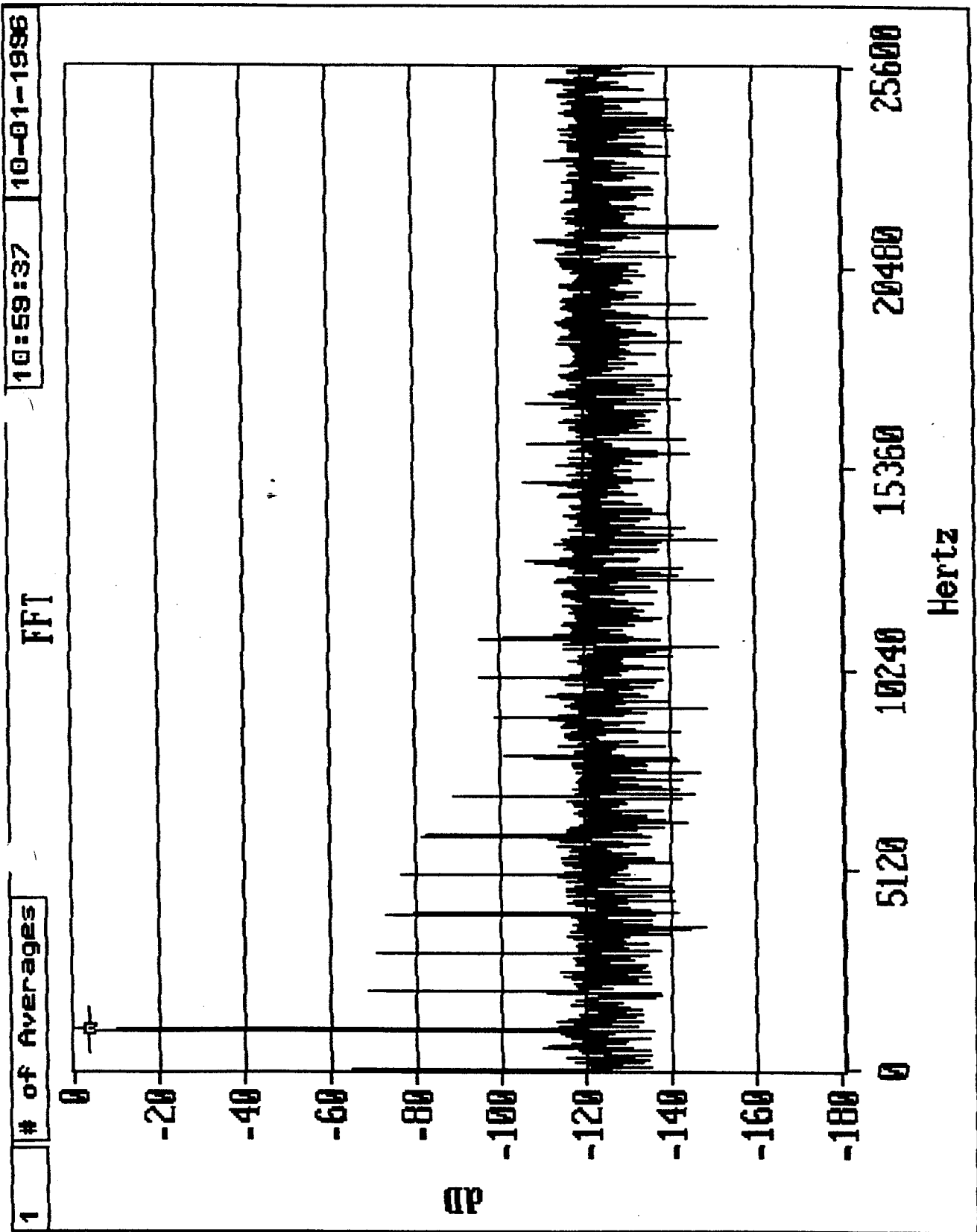
FREQUENCY 1000.000

MAGNITUDE -3.654

ZOOM

C.1.4.71

Skvad



COLLECT

SMPL FREQ

51200

S/PW

65.379

S/N+D

61.711

S/D

61.886

S/N

75.708

CONFIG

EXIT

OUTPUT

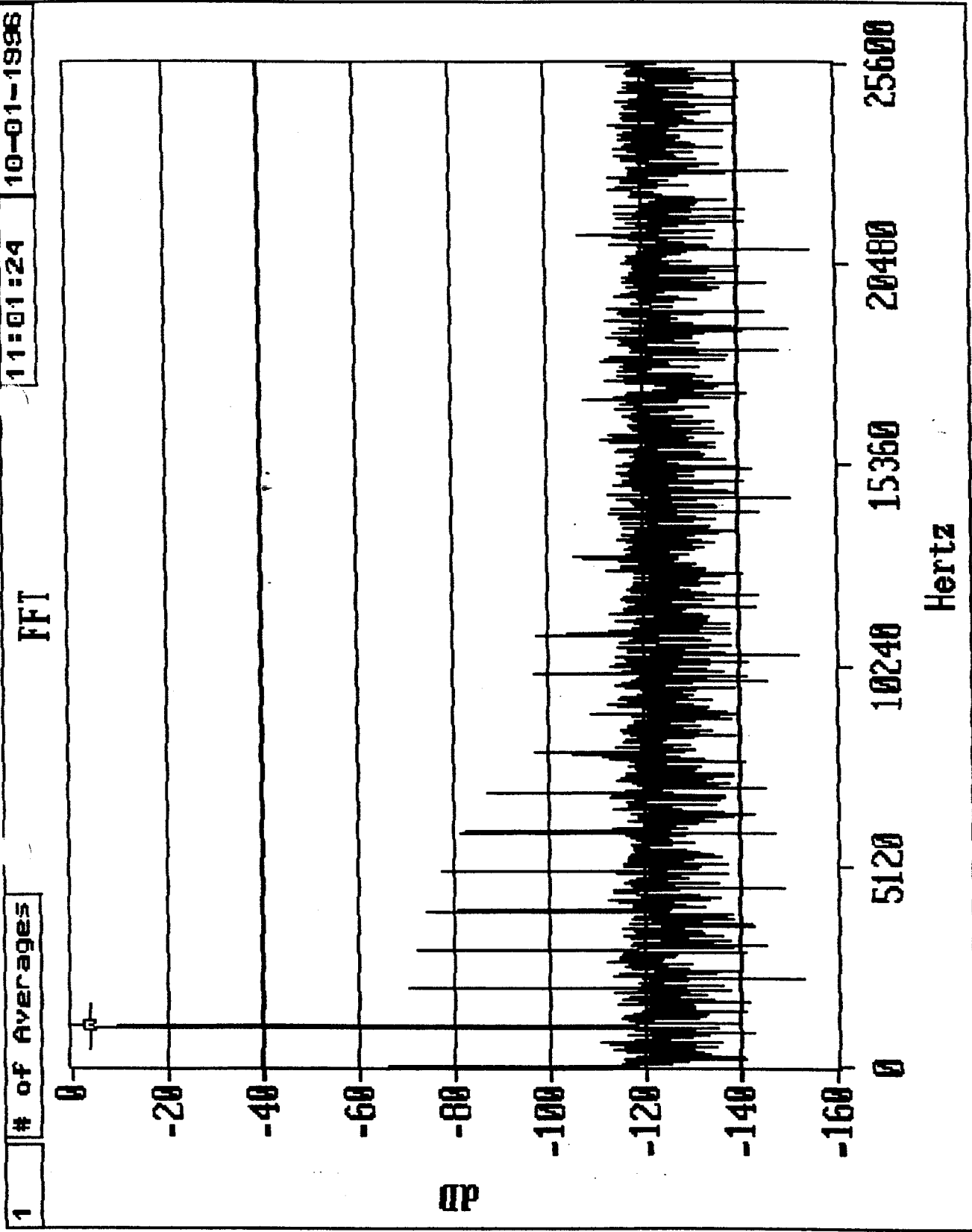
FREQUENCY 1000.000

MAGNITUDE -3.655

ZOOM

S. H. 77

Skrad



COLLECT

SMPL FREQ

51200

S/PP

66.829

S/N+D

62.901

S/D

63.135

S/N

75.661

CONFIG

EXIT

OUTPUT

FREQUENCY 1000.000

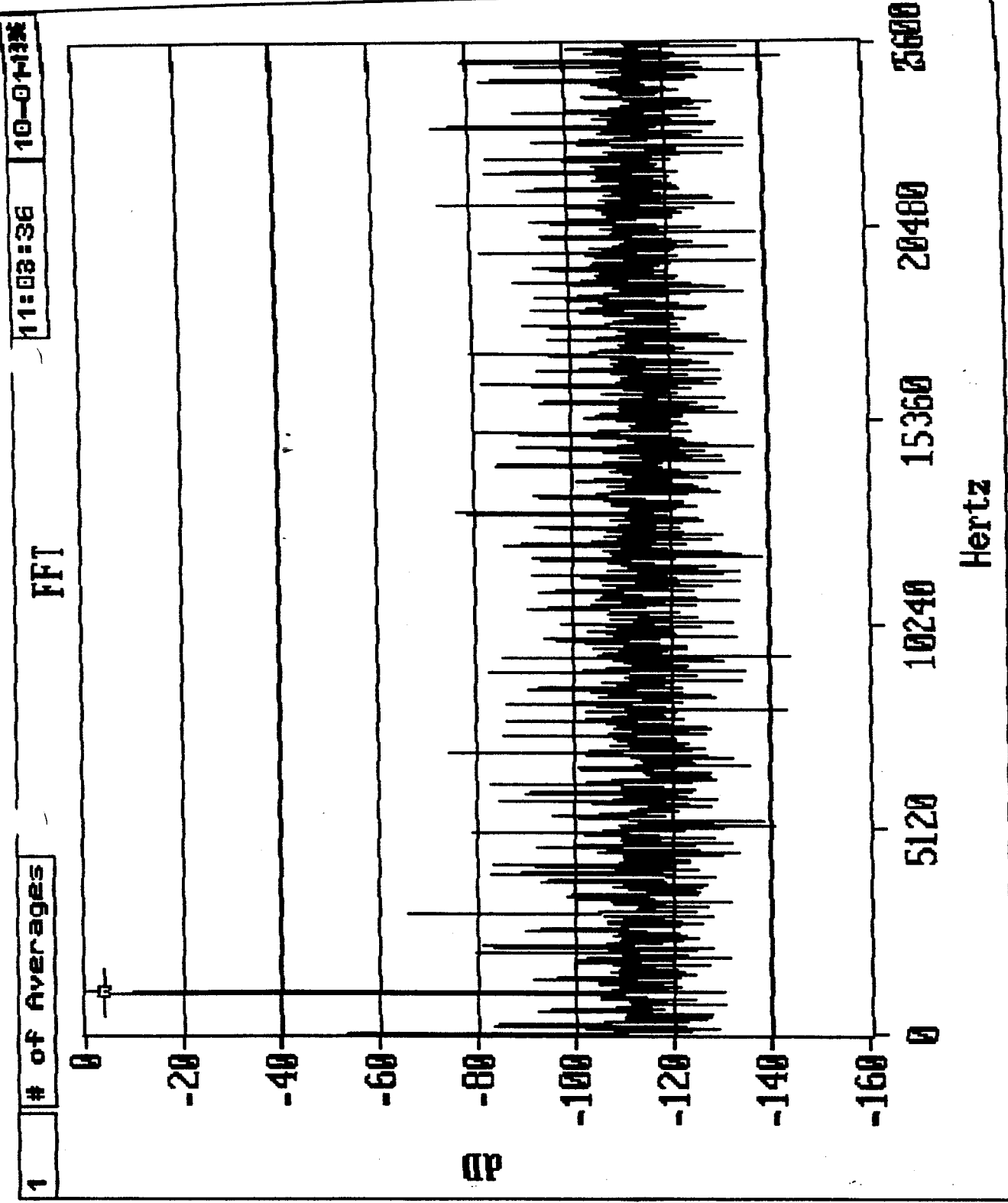
MAGNITUDE -3.654

ZOOM

LINE 78



1 Strad



COLLECT

SMPL FREQ

51200

S/PN

62.253

S/N+D

58.479

S/D

61.762

S/N

61.189

CONFIG

EXIT

OUTPUT

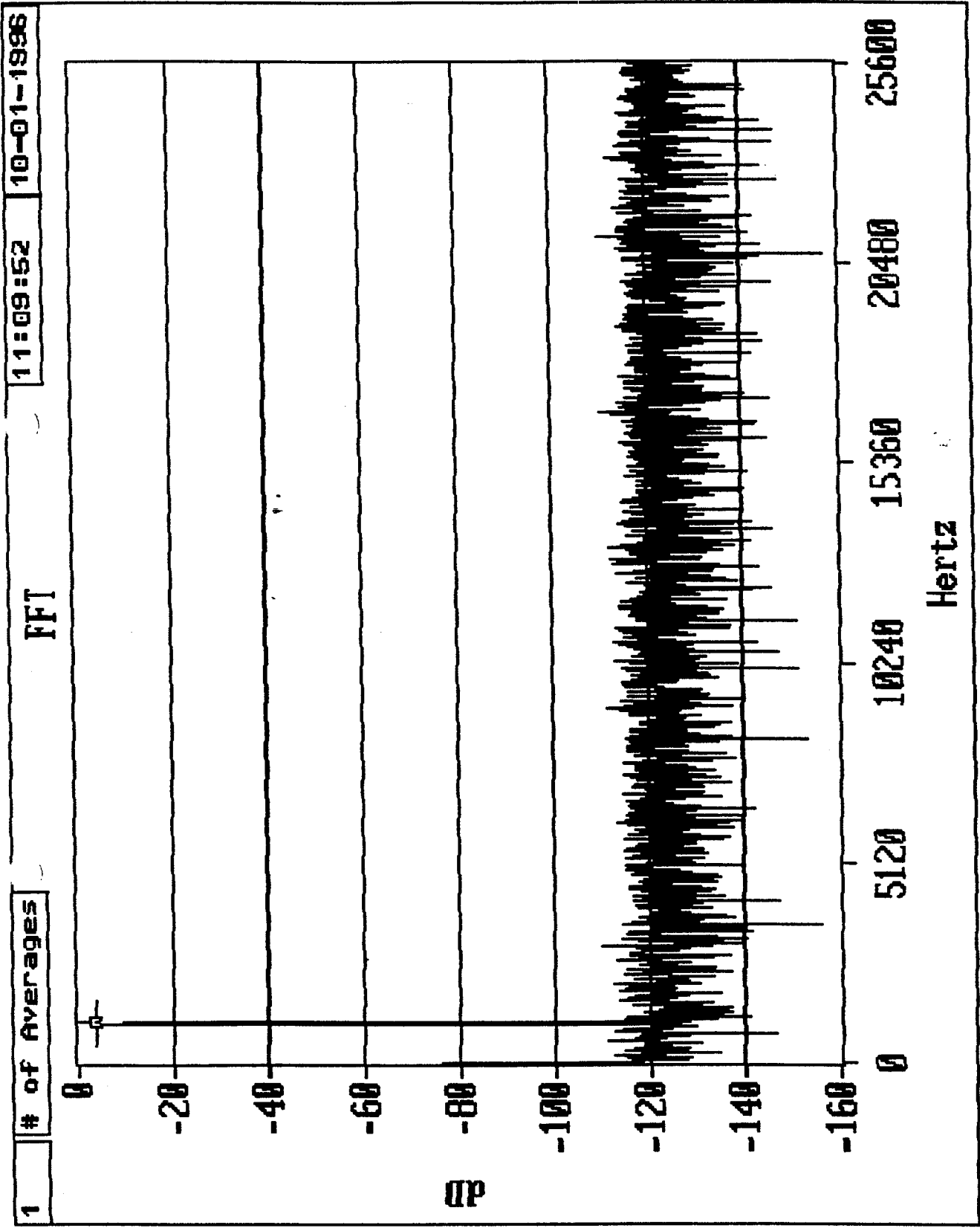
FREQUENCY 1000.000

MAGNITUDE -3.626

ZOOM

SUN# 79

15krad



COLLECT

SMPL FREQ

51200

S/PH

105.209

S/N+D

84.125

S/D

100.857

S/N

84.175

CONFIG

EXIT

OUTPUT

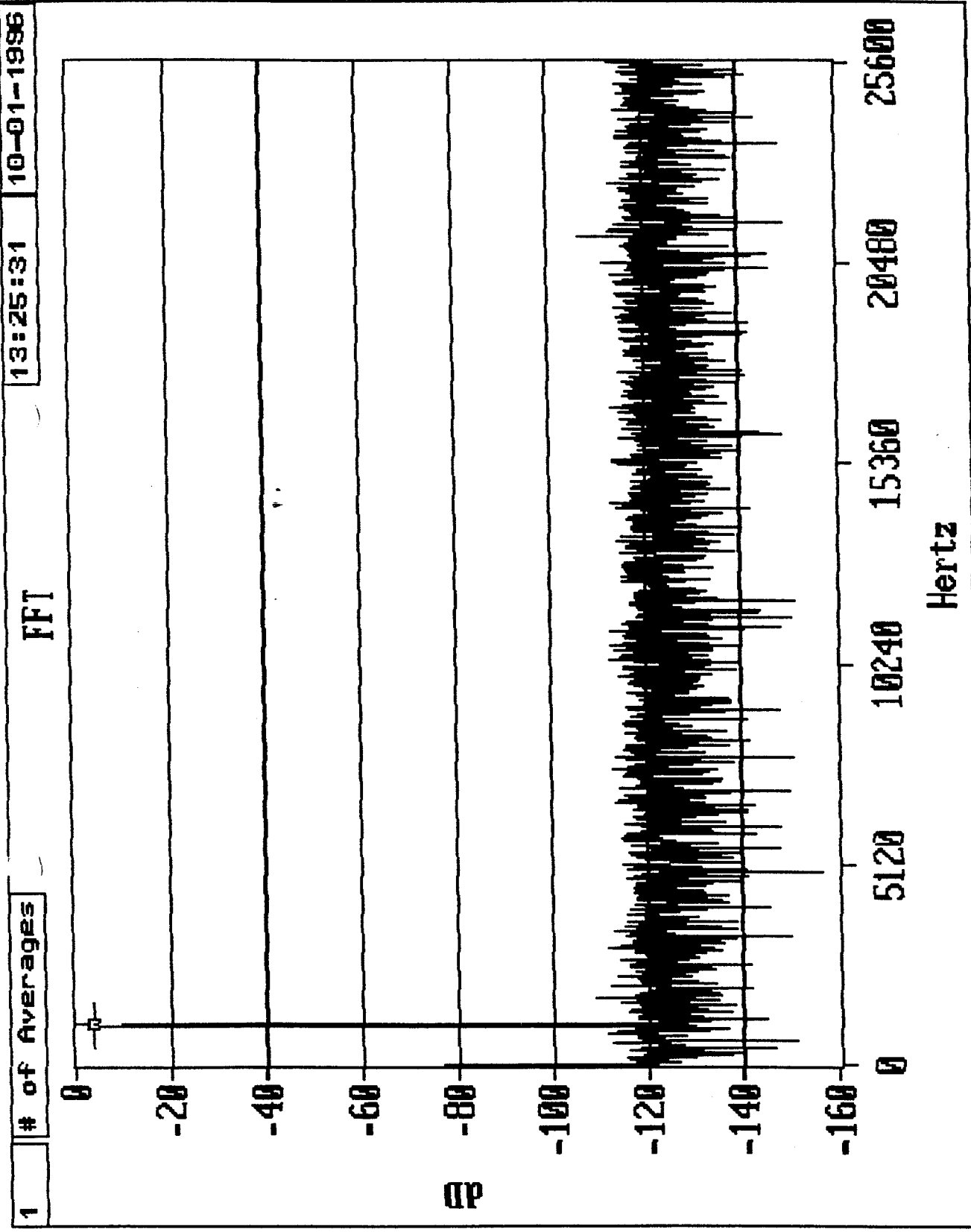
FREQUENCY 1000.000

MAGNITUDE -3.650

ZOOM

Final Control Unit sn#80

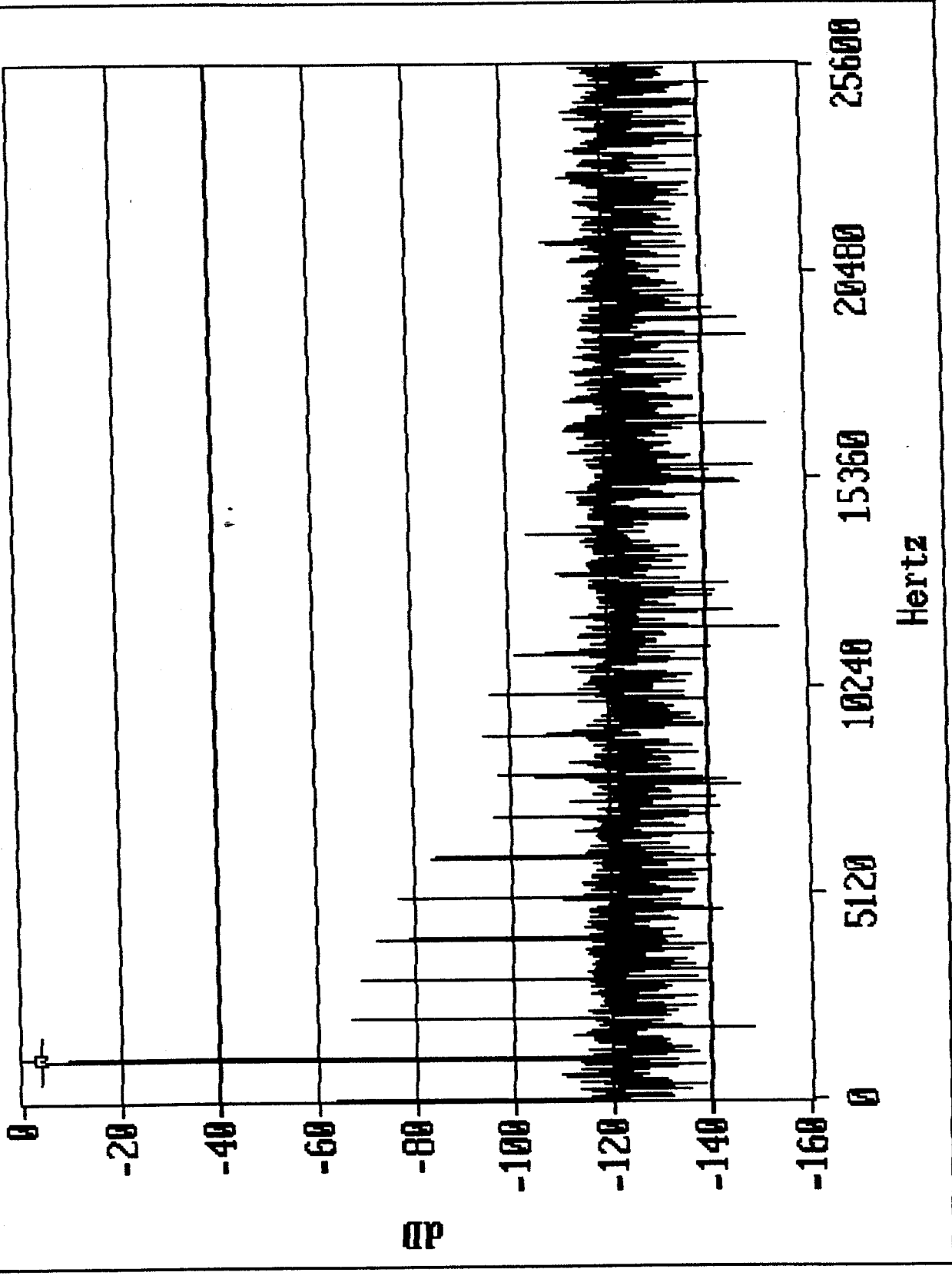
22. Skrad



- COLLECT
- SAMPL FREQ 51200
- S/P/N 102.187
- S/N+D 84.379
- S/D 101.462
- S/N 84.422
- CONFIG
- EXIT
- OUTPUT
- FREQUENCY 100.000
- MAGNITUDE -3.649
- ZOOM

Talizi % sum#B

1 # of Averages 13:28:53 10-01-1996 FFT



COLLECT

SMPL FREQ  
51200

S/PH  
63.174

S/N+D  
60.000

S/D  
60.154

S/N  
77.720

CONFIG

EXIT

OUTPUT

FREQUENCY 1000.000

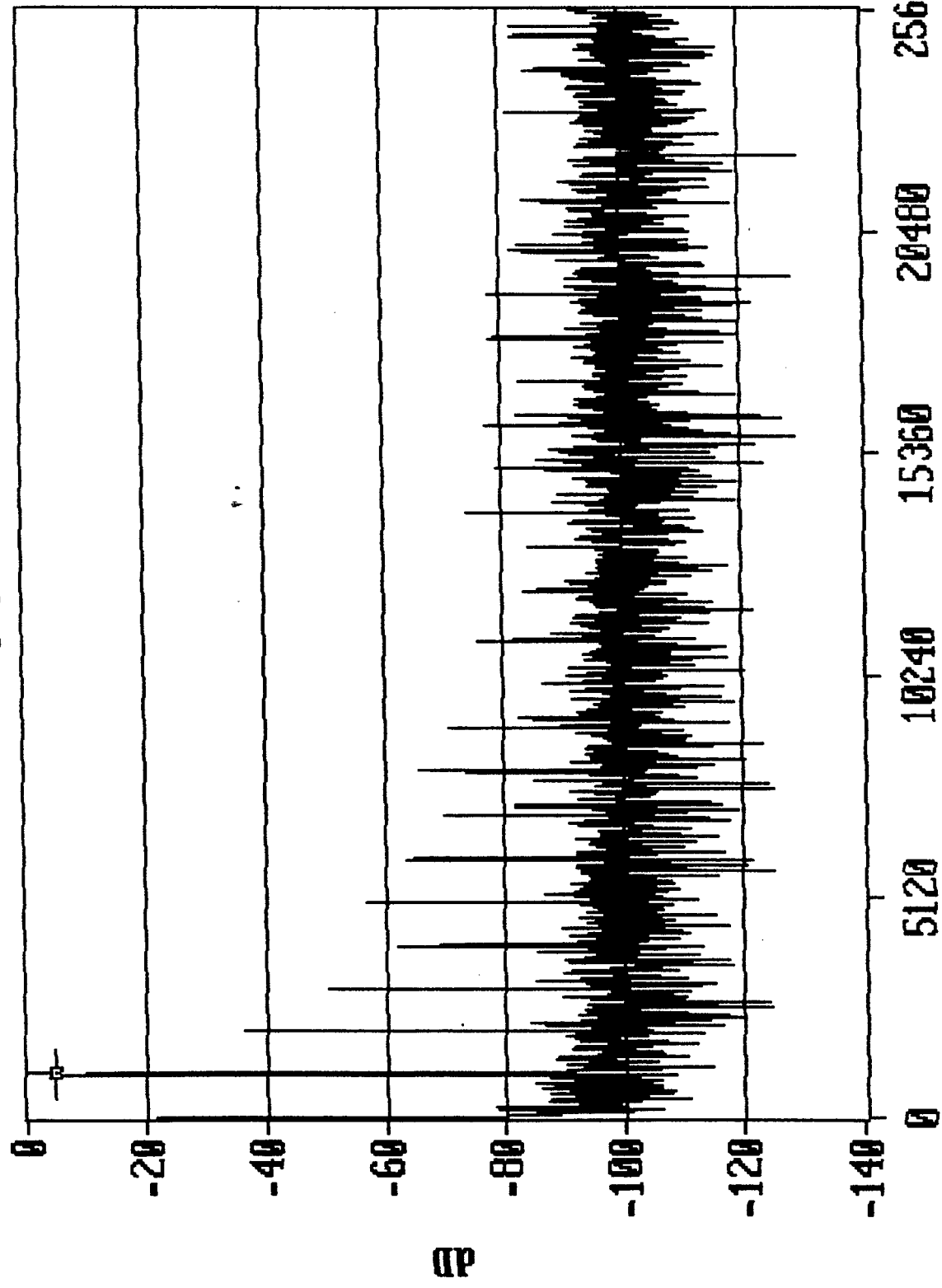
MAGNITUDE -3.656

ZOOM

22. Skrad

1 # of Averages 13:33:20 10-01-1986

FFT



COLLECT

SMPL FREQ

51200

S/PW

31.544

S/N+D

31.312

S/D

31.339

S/N

53.371

CONFIG

EXIT

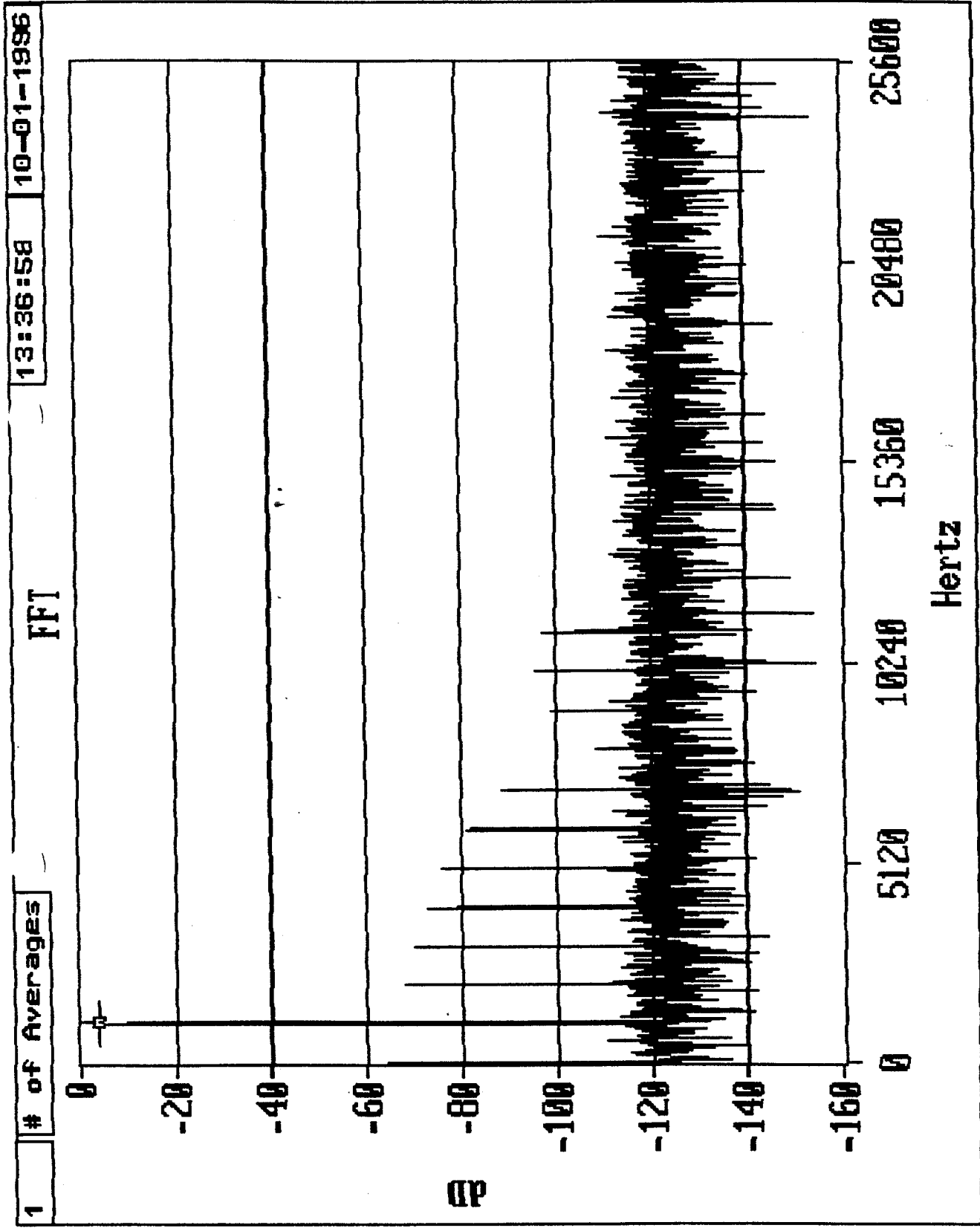
OUTPUT

FREQUENCY 1000.000

MAGNITUDE -4.507

ZOOM

22. Skrad



COLLECT

SMPL FREQ

51200

S/PW

64.267

S/N+D

60.768

S/D

60.911

S/N

75.624

CONFIG

EXIT

OUTPUT

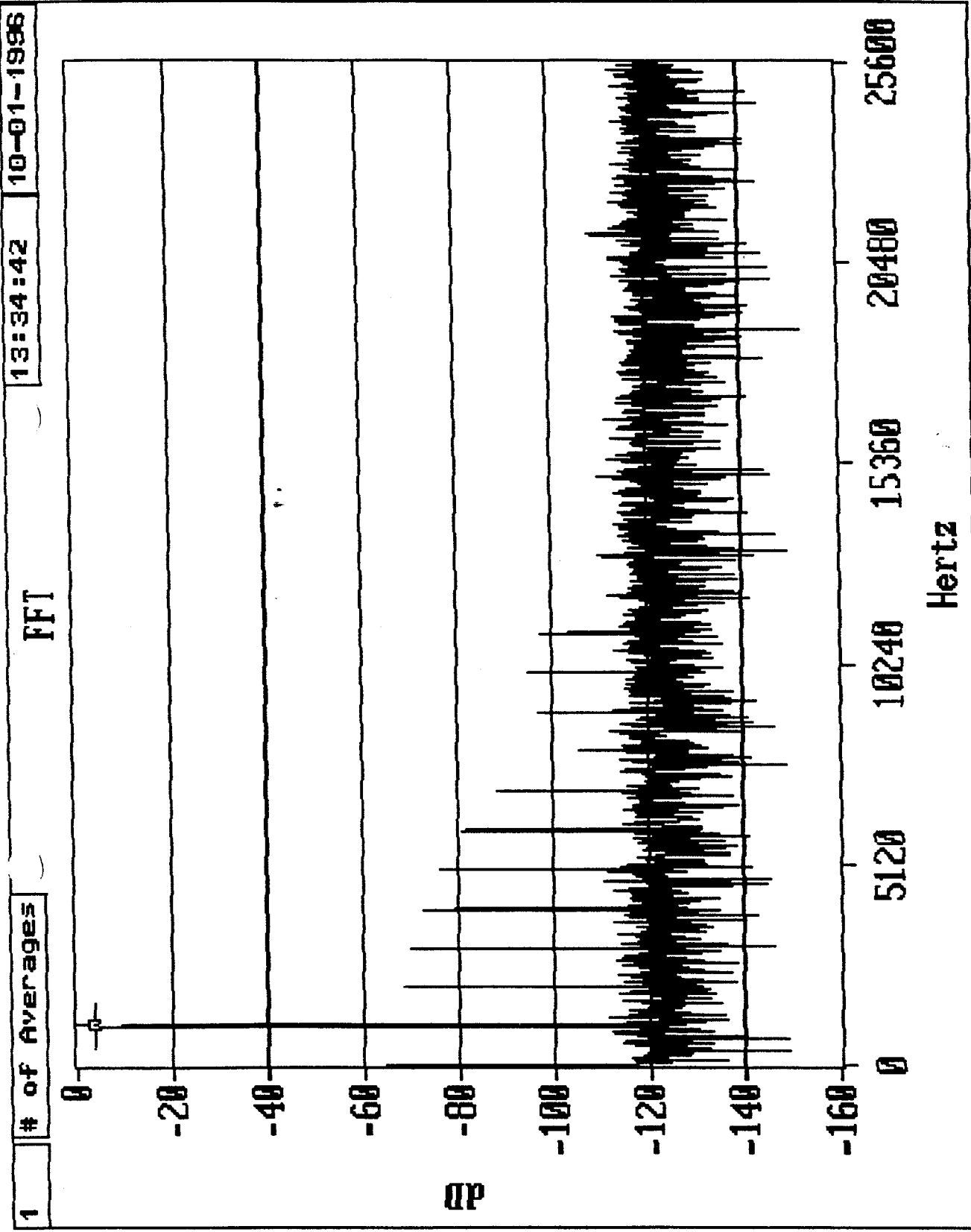
FREQUENCY 1000.000

MAGNITUDE -3.655

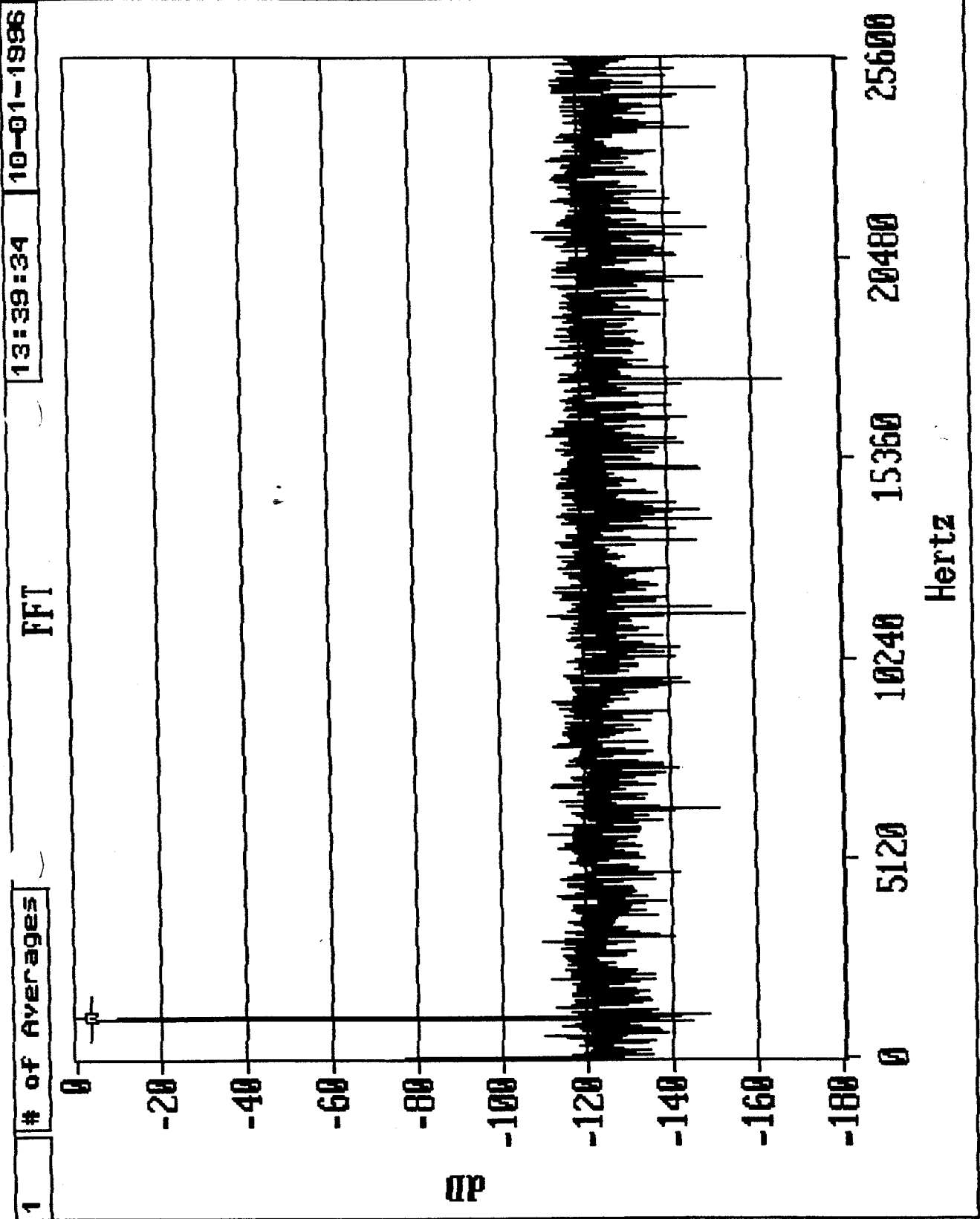
ZOOM

0000

22. Stad



- COLLECT
- SMPL FREQ
- 51200
- S/PH
- 64.586
- S/N+D
- 61.013
- S/D
- 61.169
- S/N
- 75.500
- CONFIG
- EXIT
- OUTPUT
- FREQUENCY 1000.000
- MAGNITUDE -3.655
- ZOOM



- COLLECT
- SMPL FREQ 51200
- S/PM 106.217
- S/N+D 84.335
- S/D 102.278
- S/N 84.363
- CONFIG
- EXIT
- OUTPUT
- FREQUENCY 1000.000
- MAGNITUDE -3.648
- ZOOM

Trans also ch1 20

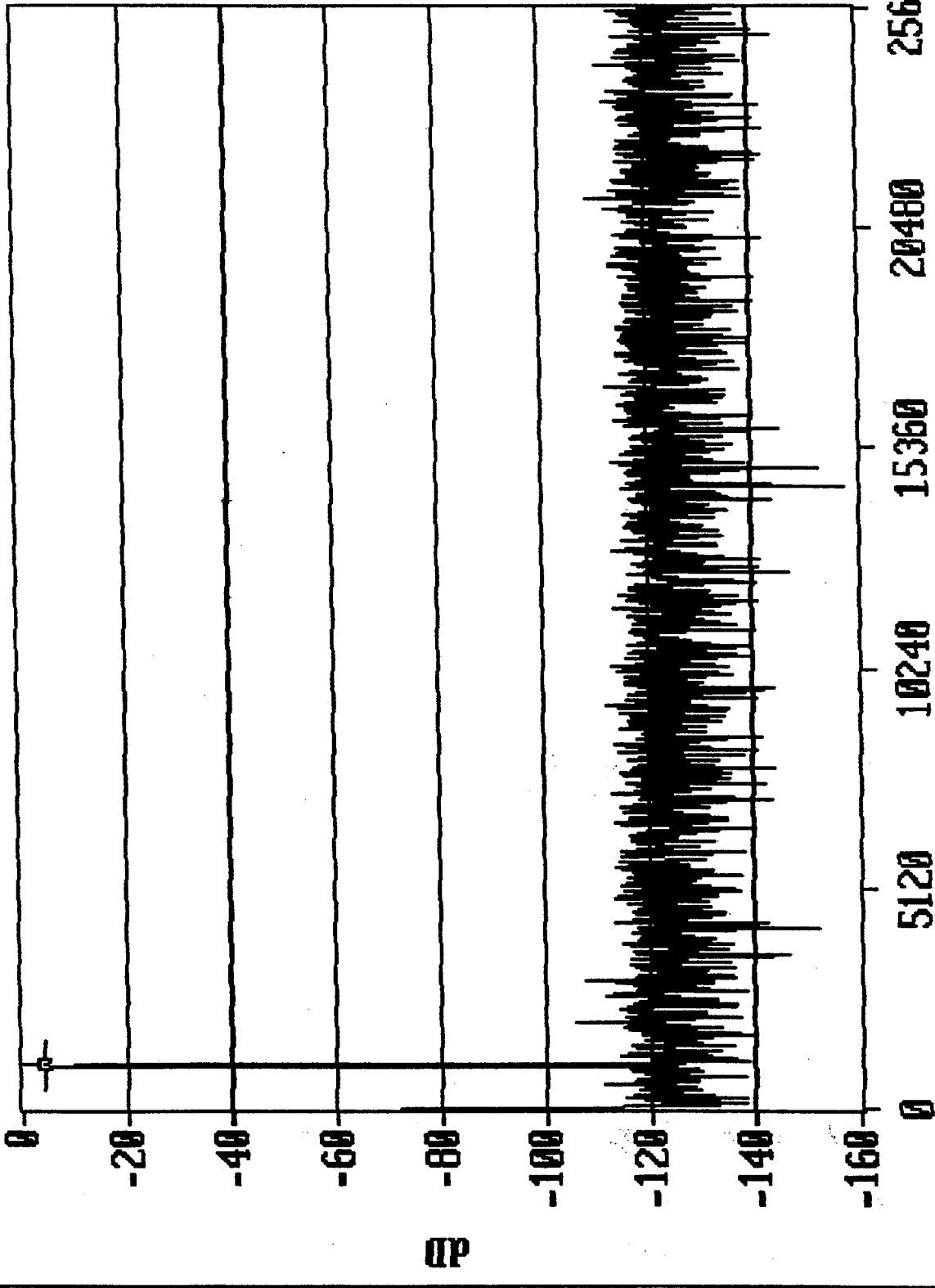


30 Grad

15:08:45 10-03-1996

FFT

1 # of Averages



Hertz

ZOOM

MAGNITUDE -4.017

FREQUENCY 1000.000

OUTPUT

EXIT

COLLECT

SAMPL FREQ

51200

S/PH

100.742

S/N+D

83.904

S/D

98.452

S/N

84.017

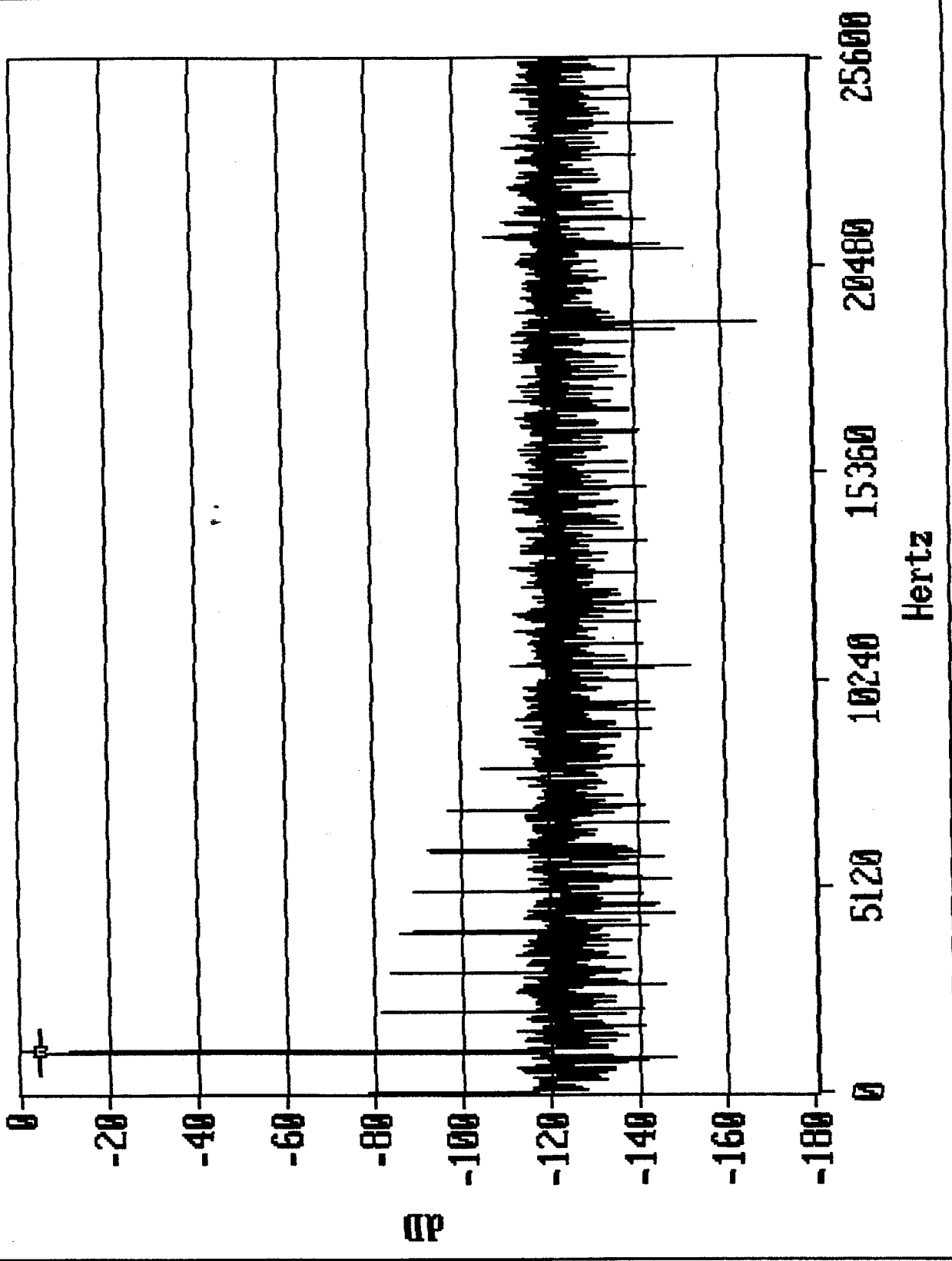
CONFIG

CS #1 START TEST Control Unit

CSO 910

30krad

1 # of Averages 15:10:47 10-03-1996 FFT



ZOOM

MAGNITUDE -4.019

FREQUENCY 1000.000

OUTPUT

EXIT

SN# 76

COLLECT

SAMPL FREQ  
51200

S/PN  
77.129

S/N+D  
73.073

S/D  
73.694

S/N  
81.784

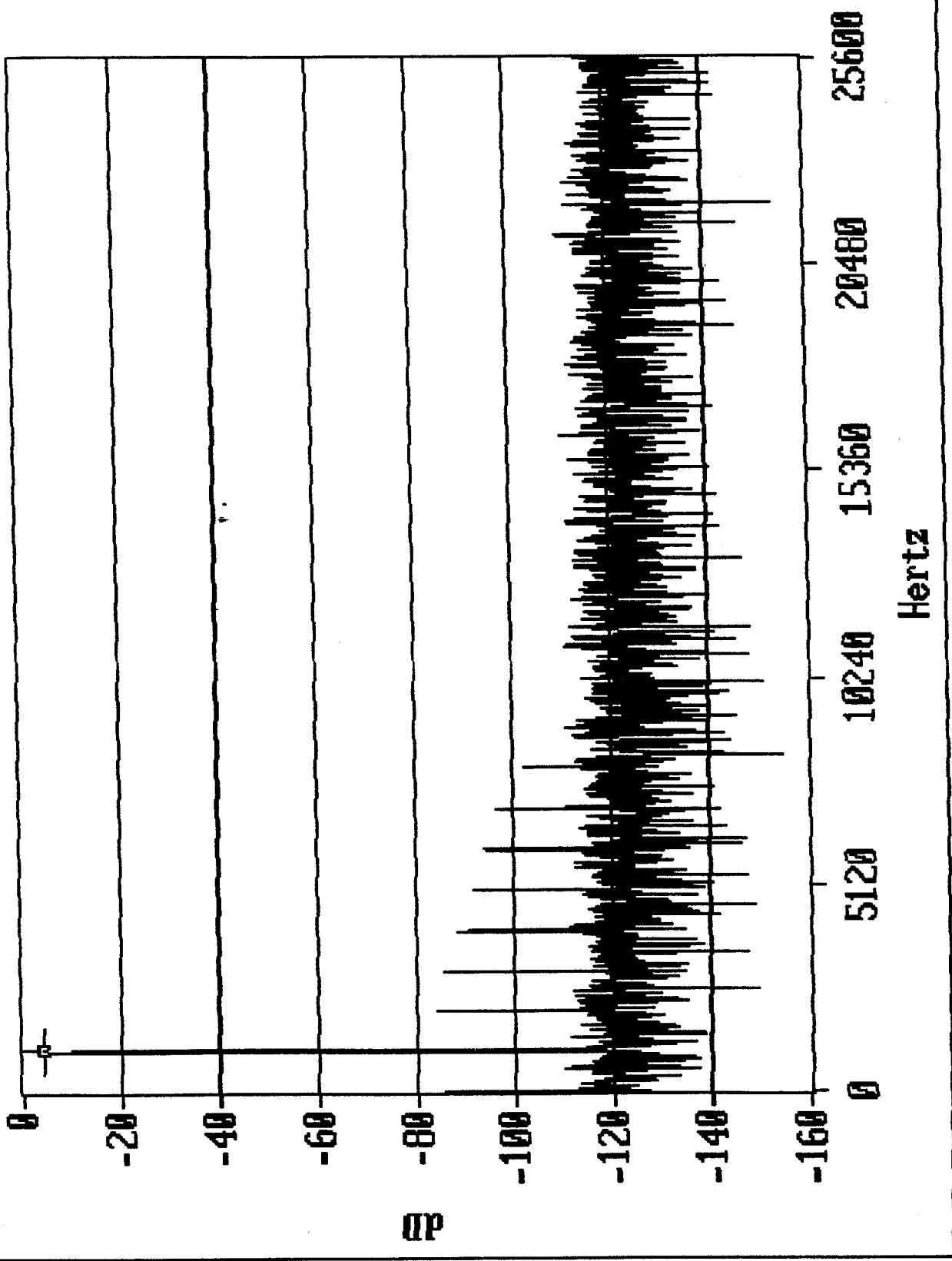
CONFIG

30krad

15:12:38 10-03-1996

FFT

1 # of Averages



COLLECT

SAMPL FREQ

51200

S/PPN

79.895

S/N+D

75.343

S/D

76.362

S/N

82.098

CONFIG

EXIT

OUTPUT

FREQUENCY 1000.000

MAGNITUDE -4.019

ZOOM

← 06910

Sn # 77

30Krad

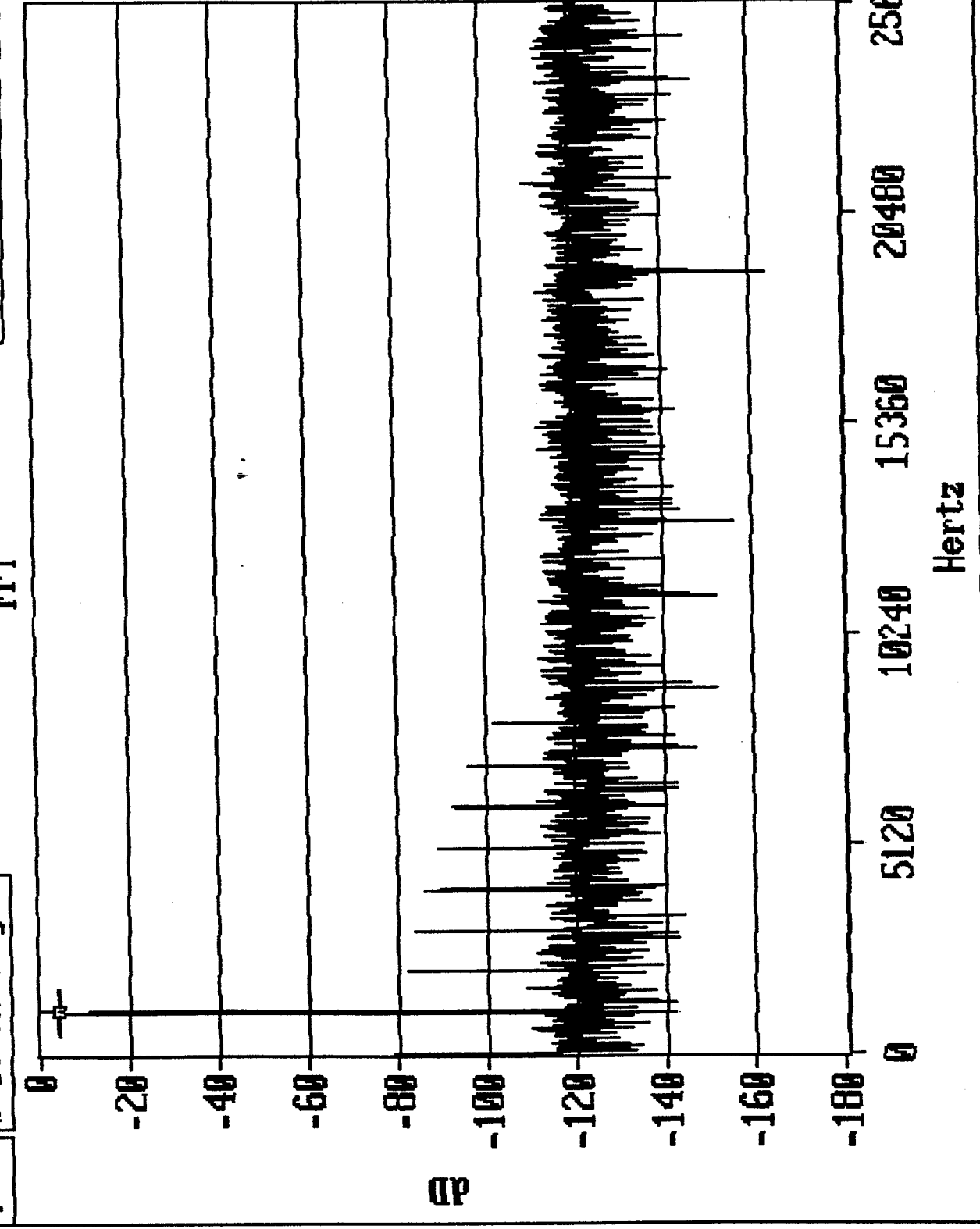
10-03-1986

15:16:13

FFT

# of Averages

1



COLLECT

SMPL FREQ

51200

S/PN

77.565

S/N+D

73.332

S/D

74.019

S/N

81.642

CONFIG

EXIT

OUTPUT

FREQUENCY 1000.000

MAGNITUDE -4.019

ZOOM

Sn # 78

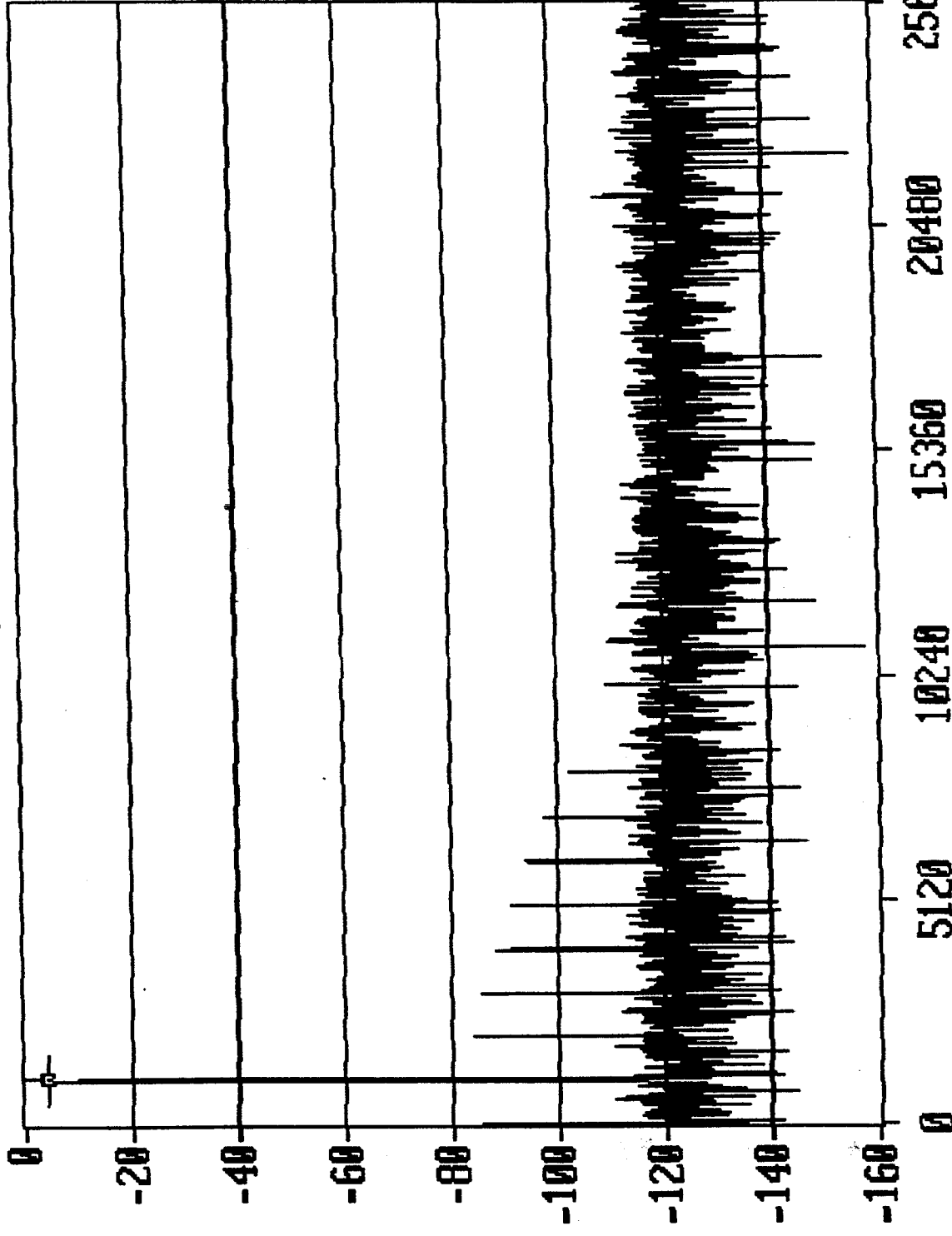
00000

30KHz

15:18:21 10-03-1996

FFT

1 # of Averages



Hertz

ZOOM

MAGNITUDE -4.019

FREQUENCY 1000.000

OUTPUT

EXIT

COLLECT

SMPL FREQ

51200

S/PH

79.918

S/N+D

75.360

S/D

76.342

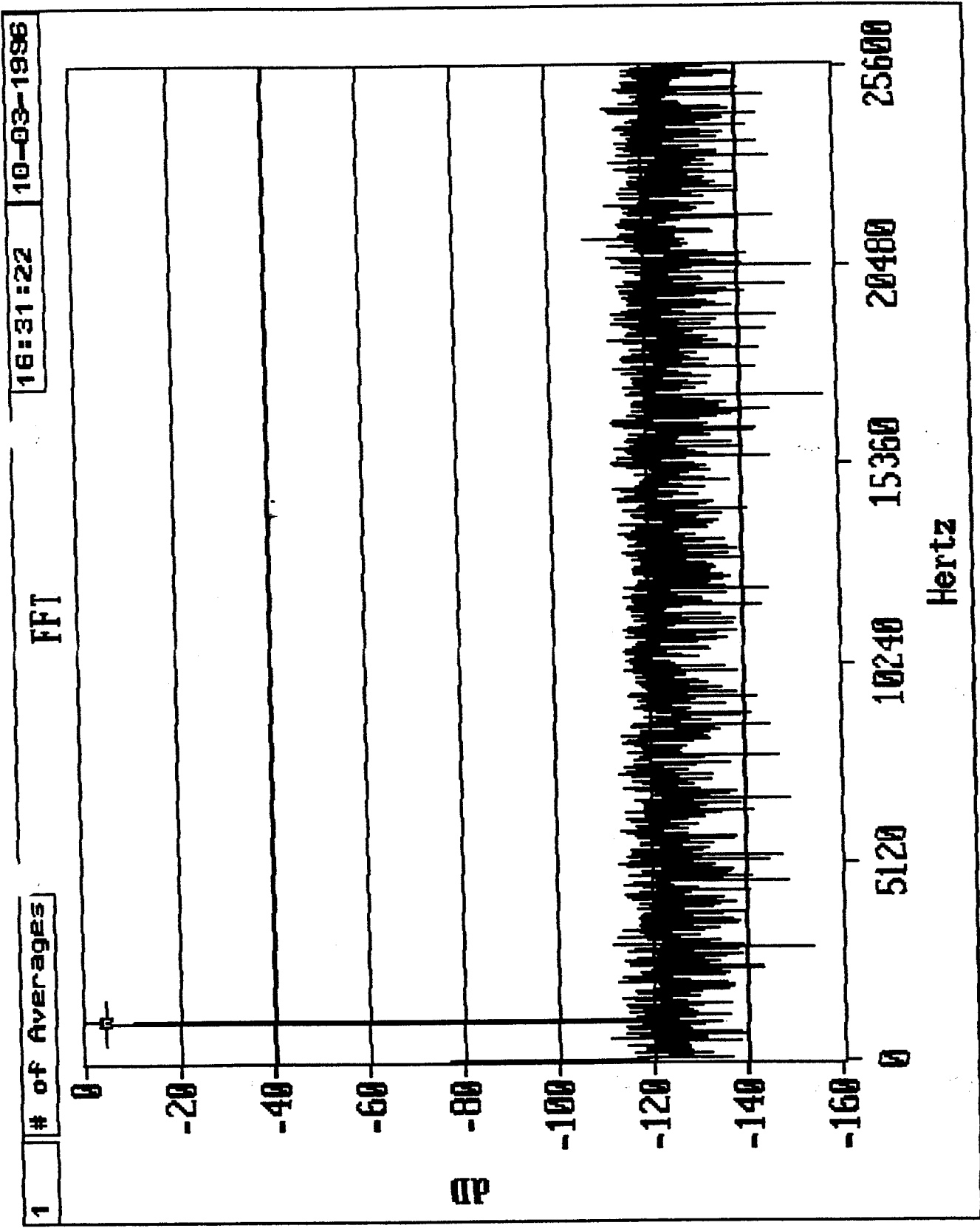
S/N

82.256

CONFIG

SN #79

30k read



COLLECT

SMPL FREQ

51200

S/PH

103.031

S/N+D

84.104

S/D

102.080

S/N

84.131

CONFIG

EXIT

OUTPUT

FREQUENCY 1000.000

MAGNITUDE -4.018

ZOOM

sn #80 Control unit

5-10-81A