



europaean space agency
agence spatiale européenne

Pages 1 to 73


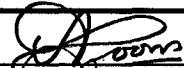
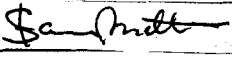
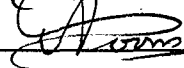
**CONNECTORS, ELECTRICAL, FOR PRINTED
CIRCUIT BOARDS, REMOVABLE CONTACTS,
CRIMP, WIRE-WRAP, SOLDER AND,
SAVER**

BASED ON TYPE HE801

ESA/SCC Detail Specification No. 3401/016



**space components
coordination group**

Issue/Rev.	Date	Approved by	
		SCCG Chairman	ESA Director General or his Deputy
Issue 6	April 1998		
Revision 'A'	November 2000		



DOCUMENTATION CHANGE NOTICE

Rev. Letter	Rev. Date	Reference	CHANGE Item	Approved DCR No.
		This Issue supersedes Issue 5 and incorporates all changes agreed in the following DCRs:-		
		Cover page		None
		DCN		None
		Table 1(a)	: In Inserts, Plugs and Receptacles, Codes 09 and 21 "Not to be used" and columns 05 and 16 deleted	221419
			: In Guiding and Locking Devices, New Code 80 added	221419
			: In Intermateability, Inserts and Guiding Devices, Codes 09 and 21 columns deleted horizontally and vertically	221419
			: In Intermateability, Inserts and Locking Devices, Codes 09 and 21 columns deleted horizontally and vertically and new Code 80 added	221419
		Figure 2(a)	: Code 09, Deleted in toto	221419
			: Code 12, Dimension "L" amended in the Drawing	221418
			: Code 15, Dimensions "A" and "B" amended in the Table	221418
			: Code 17, Contact Locations "52" and "53" replaced by "64" and "65" respectively in the Drawing	221418
			: Code 18, Dimensions "H" and "N" deleted from the Table	221418
			: Code 20, Dimension "N" deleted from the Table	221418
			: Code 21, Deleted in toto	221419
			: Code 24, Dimension "L" amended in the Drawing	221418
			, Dimension "N" deleted from the Table	221418
			: Code 25, Dimension "L" amended in the Drawing	221418
			, Dimension "N" deleted from the Table	221418
			: Code 56, Subtitle amended to "PLUG"	221418
			: Code 58, Dimension "L" amended in the Drawing	221418
			: Code 59, Dimension "L" amended in the Drawing	221418
			, Dimension "N" deleted from the Table	221418
			: Code 60, Dimension "L" amended in the Drawing	221418
			: Code 61, Dimension "L" amended in the Drawing	221418
			, Dimension "M" added to the Drawing	221418
			, Dimension "N" deleted from the Table	221418
			: Code 62, Dimension "L" amended in the Drawing	221418
			, Dimension "M" clarified in the Drawing	221418
			: Code 63, Dimension "L" amended in the Drawing	221418
			, Dimension "M" clarified in the Drawing	221418
			, Dimension "N" deleted from the Table	221418
		Figure 2(b)	: Code 80 added	221419
		Figure 2(c)	: For Solder Contacts, Items 3 and 4 Subtitle amended	221419
			, Item 3 Table amended	221419
		Para. 4.2.2	: Deviation "(e)" added	221419
		Para. 4.3.4	: Text totally rewritten	221419/23887
		Para. 4.5.4.3	: Last sentence amended	221419
'A'	Nov. '00	P1. Cover page		None
		P2. DCN		None
		P7. Table 1(a)	: Code No. 81 added to Guiding and Locking Devices	221591
		P9. Table 1(a)	: Code No. 81 added to Intermateability Chart, Inserts and Locking Devices	221591
		P61A. Figure 2(b)	: New page added to include Code 81 devices	221591



TABLE OF CONTENTS

	<u>Page</u>
1. <u>GENERAL</u>	5
1.1 Scope	5
1.2 Range of Components	5
1.3 Maximum Ratings	5
1.4 Parameter Derating Information	5
1.5 Physical Dimensions	5
2. <u>APPLICABLE DOCUMENTS</u>	5
3. <u>TERMS, DEFINITIONS, ABBREVIATIONS, SYMBOLS AND UNITS</u>	5
4. <u>REQUIREMENTS</u>	65
4.1 General	65
4.2 Deviations from Generic Specification	65
4.2.1 Deviations from Special In-process Controls	65
4.2.2 Deviations from Final Production Tests	65
4.2.3 Deviations from Burn-in and Electrical Measurements	65
4.2.4 Deviations from Qualification Tests	65
4.2.5 Deviations from Lot Acceptance Tests	65
4.3 Mechanical Requirements	65
4.3.1 Dimension Check	65
4.3.2 Weight	66
4.3.3 Contact Capability	66
4.3.4 Contact Retention	66
4.3.5 Mating and Unmating Forces	66
4.3.6 Insert Retention	66
4.3.7 Jackscrew Retention	66
4.3.8 Contact Insertion and Withdrawal Forces	66
4.3.9 Engagement and Separation Forces	66
4.3.10 Oversize Pin Exclusion	66
4.3.11 Probe Damage	66
4.3.12 Solderability	66
4.4 Materials and Finishes	66
4.4.1 Shells	67
4.4.2 Inserts	67
4.4.3 Contacts	67
4.4.4 Contact Retaining Clip	67
4.4.5 Guiding and Locking Devices	67
4.4.6 Magnetism Level	67
4.5 Marking	67
4.5.1 General	67
4.5.2 Contact Position	67
4.5.3 The SCC Component Number	67
4.5.4 Characteristics	68
4.5.5 Traceability Information	68
4.6 Electrical Measurements	69
4.6.1 Electrical Measurements at Room Temperature	69
4.6.2 Electrical Measurements at High and Low Temperatures	69
4.6.3 Circuits for Electrical Measurements	69



	<u>Page</u>	
4.7	Burn-in and Electrical Measurements	69
4.8	Environmental and Endurance Tests	69
4.8.1	Measurements and Inspections on Completion of Environmental Tests	69
4.8.2	Measurements and Inspections at Intermediate Points during Endurance Tests	69
4.8.3	Measurements and Inspections on Completion of Endurance Tests	69
4.8.4	Conditions for Operating Life Tests (Part of Endurance Testing)	69
4.8.5	Electrical Circuit for Operating Life Tests	69
4.8.6	Conditions for High Temperature Storage Test (Part of Endurance Testing)	69

TABLES

1(a)	Range of Components	6
	- Inserts, Plugs and Receptacles	6
	- Guiding and Locking Devices	7
	- Intermateability Chart, Inserts and Guiding Devices	8
	- Intermateability Chart, Inserts and Locking Devices	9
1(b)	Maximum Ratings	11
2	Electrical Measurements at Room Temperature	70
3	Not Applicable	
4	Not Applicable	
5	Not Applicable	
6	Measurements and Inspections on Completion of Environmental and Endurance Testing	71

FIGURES

1	Parameter Derating Information	11
2	Physical Dimensions	12
2(a)	Inserts: Plugs and Receptacles (Codes 01 - 64)	12
2(b)	Guiding and Locking Devices (Codes 26 - 55; Codes 71 - 77)	42
2(c)	Contact Mounting Configurations	62

APPENDICES (Applicable to specific Manufacturers only)

None

**1. GENERAL****1.1 SCOPE**

This specification details the ratings, physical and electrical characteristics, test and inspection data of Electrical Connectors for Printed Circuit Boards, Removable Contacts, Crimp, Wire-wrap, Solder and Saver, Based on Type HE801. It shall be read in conjunction with:

- ESA/SCC Generic Specification No. 3401, Connectors, Electrical, Non-Filtered, Circular and Rectangular.
- ESA/SCC Detail Specification No. 3401/017, Contacts, Electrical, Crimp, Wire-Wrap, Solder and Saver, for 3401/016 Connectors,

the requirements of which are supplemented herein.

Crimp contacts are delivered separately from the inserts.

Wire-Wrap, solder and saver contacts are delivered mounted in the inserts.

N.B.

Saver contacts may be mounted in other plug or receptacle inserts.

1.2 RANGE OF COMPONENTS

The different configurations of the connectors and contacts specified herein, guiding and locking devices, compatibilities between inserts and contacts, between inserts and guiding devices and between inserts and locking devices are given in Table 1(a).

1.3 MAXIMUM RATINGS

The maximum ratings applicable to the connectors specified herein, which shall not be exceeded at any time during use or storage, are scheduled in Table 1(b).

1.4 PARAMETER DERATING INFORMATION

The applicable derating information for the connectors specified herein is shown in Figure 1.

1.5 PHYSICAL DIMENSIONS

The physical dimensions of the connectors, plugs and receptacles, guiding and locking devices specified herein and the contact mounting configurations are shown in Figures 2(a), 2(b) and 2(c).

2. APPLICABLE DOCUMENTS

The following documents form part of this specification and shall be read in conjunction with it:-

- (a) ESA/SCC Generic Specification No. 3401, Connectors, Electrical, Non-Filtered, Circular and Rectangular.
- (b) ESA/SCC Detail Specification No. 3401/017, Contacts, Electrical, Crimp, Wire-Wrap, Solder and Saver for 3401/016 Connectors.

3. TERMS, DEFINITIONS, ABBREVIATIONS, SYMBOLS AND UNITS

For the purpose of this specification, the terms, definitions, abbreviations, symbols and units specified in ESA/SCC Basic Specification No. 21300 shall apply.



SCC

TABLE 1(a) - RANGE OF COMPONENTS

INSERTS, PLUGS AND RECEPTACLES

CODE No.	DESCRIPTION	CONTACT INSERTION AND REMOVAL	COMPATIBILITY BETWEEN INSERTS AND CONTACTS																											
			CRIMP CODE No.		WIRE-WRAP CODE No.					SOLDER AND SAVER CODE No.																				
			04	15	10	11	21	22	01	02	03	06	07	08	12	13	14	17	18	19	64	65	66	67	68	69	70			
01	Plug 2 rows 17 cts	Rear	X	X		X		X	X			X	X	X																
02	Plug 2 rows 29 cts	Rear	X	X		X		X	X			X	X	X																
03	Plug 2 rows 41 cts	Rear	X	X		X		X	X			X	X	X																
04	Plug 2 rows 53 cts	Rear	X	X		X		X	X			X	X	X																
05	Plug 2 rows 65 cts	Rear	X	X		X		X	X			X	X	X																
06	Plug 2 rows 65 cts	Rear	X	X		X		X	X			X	X	X																
07	Plug 2 rows 84 cts	Rear	X	X		X		X	X			X	X	X																
08	Plug 2 rows 96 cts	Rear	X	X		X		X	X			X	X	X																
09	Not to be used	Rear & Front																												
10	Plug 2 rows 120 cts	Rear	X	X		X		X	X			X	X	X																
11	Not to be used																													
12	Plug 3 rows 160 cts	Rear	X	X		X		X	X			X	X	X																
13	Receptacle 2 rows 17 cts	Rear	X	X		X		X	X			X	X	X																
14	Receptacle 2 rows 29 cts	Rear	X	X		X		X	X			X	X	X																
15	Receptacle 2 rows 41 cts	Rear	X	X		X		X	X			X	X	X																
16	Receptacle 2 rows 53 cts	Rear	X	X		X		X	X			X	X	X																
17	Receptacle 2 rows 65 cts	Rear	X	X		X		X	X			X	X	X																
18	Receptacle 2 rows 65 cts	Rear	X	X		X		X	X			X	X	X																
19	Receptacle 2 rows 84 cts	Rear	X	X		X		X	X			X	X	X																
20	Receptacle 2 rows 96 cts	Rear	X	X		X		X	X			X	X	X																
21	Not to be used	Rear & Front																												
22	Receptacle 2 rows 120 cts	Rear	X	X		X		X	X			X	X	X																
23	Not to be used																													
24	Receptacle 3 rows 160 cts	Rear	X	X		X		X	X			X	X	X																
25	Receptacle 3 rows 160 cts (1)	Front			X		X		X			X	X	X																
56	Plug 2 rows 72 cts	Rear	X	X		X		X	X			X	X	X																
57	Receptacle 2 rows 72 cts	Rear	X	X		X		X	X			X	X	X																
58	Plug 3 rows 62 cts	Rear	X	X		X		X	X			X	X	X																
59	Receptacle 3 rows 62 cts	Rear	X	X		X		X	X			X	X	X																
60	Plug 3 rows 80 cts	Rear	X	X		X		X	X			X	X	X																
61	Receptacle 3 rows 80 cts	Rear	X	X		X		X	X			X	X	X																
62	Plug 3 rows 98 cts	Rear	X	X		X		X	X			X	X	X																
63	Receptacle 3 rows 98 cts	Rear	X	X		X		X	X			X	X	X																
64	Plug 3 rows 160 cts shrouded	Rear	X	X		X		X	X			X	X	X																

NOTES

1. Not to be used for new design. Replace by Code 24.



TABLE 1(a) - RANGE OF COMPONENTS (CONTINUED)

GUIDING AND LOCKING DEVICES




CODE No.	DESCRIPTION	For thick PCB (mm)	For connectors 2 or 3 rows	For all (X) inserts or code 25	
GUIDING DEVICE	26	Unpolarised male guide Transverse mounting	1.6	2	X
	27	Unpolarised male guide Transverse mounting	1.6	3	X
	28	Unpolarised male guide Vertical mounting	-	2 or 3	X
	29	Unpolarised female guide Vertical mounting	-	2 or 3	X
	30	Unpolarised female guide Vertical mounting	-	3	25
	31	Unpolarised male guide Transverse mounting	-	2	X
	32	Unpolarised female guide Transverse mounting	-	2	X
	33	Polarised male guide Transverse mounting	1.6	2	X
	34	Polarised male guide Transverse mounting	1.6	3	X
	35	Polarised male guide Vertical mounting	-	2 or 3	X
	36	Polarised female guide Vertical mounting (on ends/centre)	-	2 or 3	X
	37	Polarised female guide Vertical mounting (on ends)	-	3	25
	38	Polarised female guide Vertical mounting (on centre)	-	3	25
	39	Polarised male guide Vertical mounting	-	3	25
	40	Polarised male guide Transverse mounting	-	2	X
	41	Polarised female guide Transverse mounting	-	2	X
	LOCKING DEVICE	42	Rotating jack socket lock	-	3
43		Non rotating jack screw lock Transverse mounting	1.6	3	X
44		Non rotating jack screw lock Vertical mounting	-	3	25

CODE No.	DESCRIPTION	For thick PCB (mm)	For connectors 2 or 3 rows	For all (X) inserts or code 25		
LOCKING DEVICE	45	Rotating jack socket lock	-	2 or 3	X	
	46	Non rotating jack screw lock Vertical mounting	-	2 or 3	X	
	47	Rotating jack screw lock with polarised guide	-	2 or 3	X	
	48	Jack socket lock/ polarised guide Transverse mounting	1.6	2	X	
	49	Jack socket lock/ polarised guide Transverse mounting	1.6	3	X	
	50	Jack socket lock/ polarised guide Vertical mounting	-	2 or 3	X	
	51	Rotating jack screw lock with polarised guide	-	2	X	
	52	Jack screw lock Transverse mounting	-	2	X	
	53	Jack screw lock Vertical mounting	-	2 or 3	X	
	GUIDING DEVICE	54	Polarised female guide Vertical floating mounting	-	2 or 3	X
		55	Polarised male guide Vertical floating mounting	-	2 or 3	X
71		Unpolarised male guide Transverse mounting	2.4	2	X	
72		Polarised male guide Transverse mounting	2.4	2	X	
LOCKING DEVICE	73	Non rotating jack screw lock Transverse mounting	2.4	2	X	
GUIDING DEVICE	74	Polarised female guide Transverse mounting	-	3	X	
	75	Unpolarised female guide Transverse mounting	-	3	X	
	76	Polarised male guide Transverse mounting	2.4 3.2	3	X	
	77	Unpolarised male guide Transverse mounting	2.4 3.2	3	X	
	LOCKING DEVICE	78	Rotating jack socket lock	-	2 or 3	X
79		Jack socket lock with polarised guide	1.6	2	X	
80		Jack socket lock with polarised guide Vertical mounting	-	2 or 3	X	
81		Rotating jack screw lock with polarised guide	-	2 or 3	X	



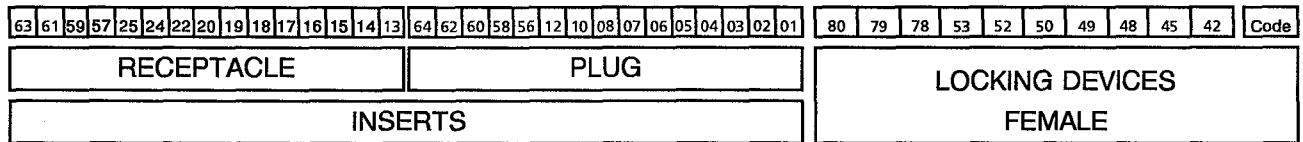
TABLE 1(a) - RANGE OF COMPONENTS (CONTINUED)

INTERMATEABILITY CHART, INSERTS AND LOCKING DEVICES

-  Compatible
-  Compatible only when used on end of insert
-  Mateable

Reading Way	63	61	59	57	25	24	22	20	19	18	17	16	15	14	13	RECEPTACLE	INSERTS	
	64	62	60	58	56	12	10	08	07	06	05	04	03	02	01			PLUG

81	51	47	73	43	46	44	LOCKING DEVICES FEMALE				
80	79	78	53	52	50	49		48	45	42	LOCKING DEVICES MALE



NOTES

- Instructions for reading Table on Page 10.

TABLE 1(a) - RANGE OF COMPONENTS (CONTINUED)

READING EXAMPLE FOR THE COMPATIBILITY TABLES OF INSERTS AND GUIDING AND LOCKING DEVICES


Having, for instance, 120 contacts, 2-row connectors, the plug is identified as code 10 and the receptacle is identified as code 22 (see Table 1(a) Range of Components - Intermateability Chart - Inserts and guiding devices), you wish to have male guiding devices mounted on your plug.

Male guiding devices appear on the right hand lower side of the table, so you would read the table horizontally to find which of the male guides may be mounted on plug code 10 (bottom centre) : you look for a device with

a  or a  for end guides, you have the possibility to mount male guides codes 33, 72, 35, 40 or 55.

a  for centre guides, you have the possibility to mount male devices code 26, 71, 28 or 31.


You now need to find the female guides that may be mounted on the opposite receptacle and also that mate with the above male guides that may be mounted on the plug.

Female guiding devices appear at the bottom right hand side of the table. Reading the table vertically upwards, you will find a  which indicates mateability with the opposite guide.

For female end guides, codes 36 and 41 mate with all the male guides mentioned above, codes 37 and 38 only mate with code 35, code 74 mates with 35 and 55, code 54 mates with codes 35, 40 and 55.

For female centre guides, codes 74, 30 and 75 mate with code 28, codes 29 and 32 mate with codes 26, 71, 28 and 31.

Are these codes compatible with receptacle code 22 (Top right of table)?

Where you have identified a mating possibility (), read the table vertically upwards to arrive at receptacle code 22.

You see that you may use female devices 36, 41 or 54 on the end of the receptacle and 29 or 32 for the centre.

The same reading method applies to locking devices.

When the customer does not specify any guiding or locking device, the connectors shall be delivered with the following devices:-

PLUGS are equipped with male devices

On the ends of 2 row plug	code 33
On the centre of 2 row plug	code 26
On the ends of 3 row plug	code 34
On the centre of 3 row plug	code 27

RECEPTACLES are equipped with female devices

On the ends	code 36
On the centre	code 29

**TABLE 1(b) - MAXIMUM RATINGS**

NO.	CHARACTERISTIC	SYMBOL	MAXIMUM RATING	UNIT	REMARKS
1	Working Voltage Sea Level	V	300	Vrms	Note 1
2	Rated Current	I	5.0	A	
3	Operating Temperature Range	T _{op}	-55 to +125	°C	
4	Storage Temperature Range	T _{stg}	-55 to +125	°C	
5	Soldering Temperature	T _{sol}	+260	°C	Note 2

NOTES

1. Between contacts.
2. Duration 10 seconds maximum and the same contact shall not be resoldered until 3 minutes have elapsed.

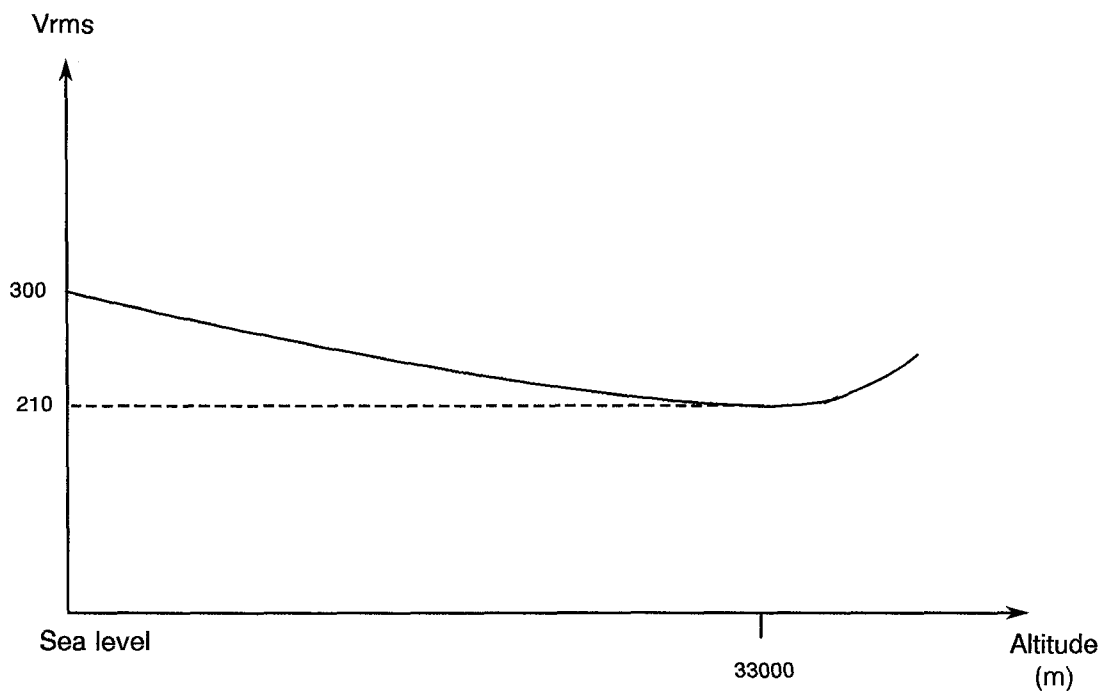
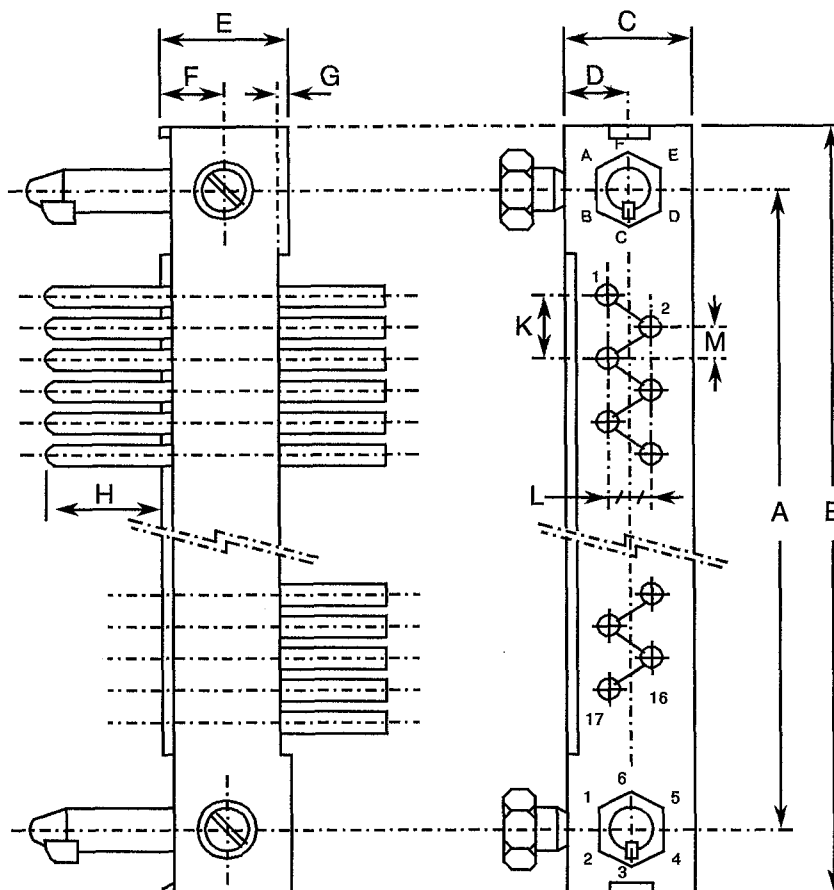
FIGURE 1 - PARAMETER DERATING INFORMATIONWorking Voltage versus Altitude



FIGURE 2 - PHYSICAL DIMENSIONS

FIGURE 2(a) - INSERTS: PLUGS AND RECEPTACLES

CODE 01 - PLUG, 2 ROWS, 17 CONTACTS



SYMBOL	MILLIMETRES	
	MIN.	MAX.
A	30.33	30.63
B	38.00	38.50
C	6.30	6.40
D	3.10	3.30
E	7.75	8.05
F	3.80	4.00
G	0.25	0.60
H	3.60	4.80
K	2.39	2.69
L	2.39	2.69
M	1.12	1.42

NOTES

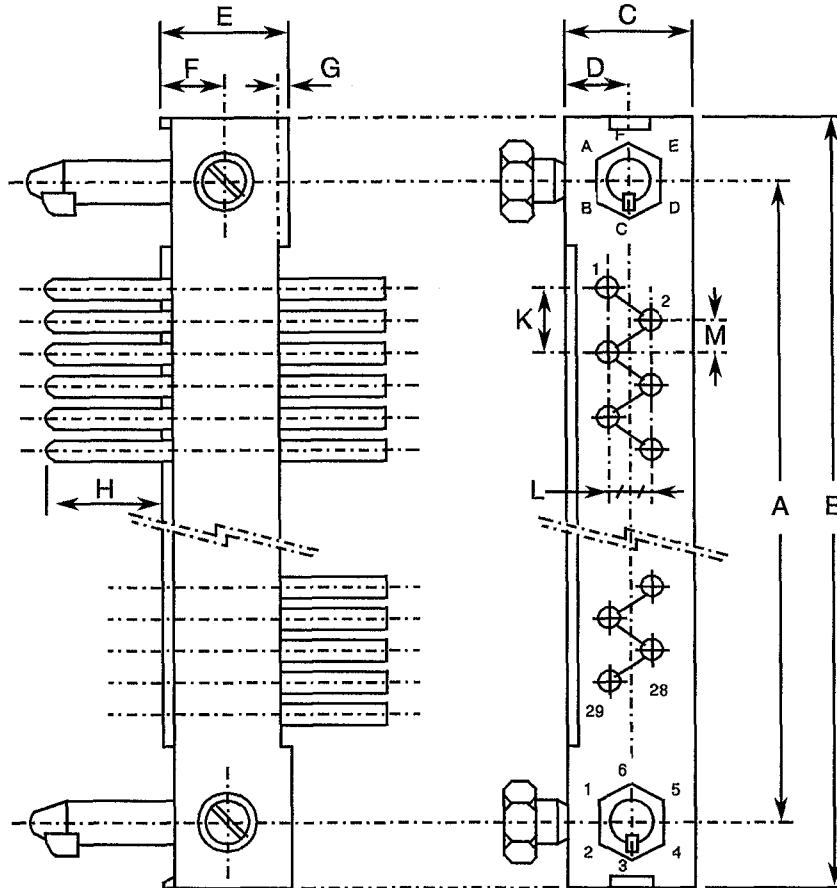
1. Weight: 2.3g.
2. Orientation of labelling of contacts and guiding devices is not a true representation.
3. The front of the insert shall be marked with the minimum marking shown.



FIGURE 2 - PHYSICAL DIMENSIONS (CONTINUED)

FIGURE 2(a) - INSERTS: PLUGS AND RECEPTACLES (CONTINUED)

CODE 02 - PLUG, 2 ROWS, 29 CONTACTS



SYMBOL	MILLIMETRES	
	MIN.	MAX.
A	45.57	45.87
B	53.20	53.70
C	6.30	6.40
D	3.10	3.30
E	7.75	8.05
F	3.80	4.00
G	0.25	0.60
H	3.60	4.80
K	2.39	2.69
L	2.39	2.69
M	1.12	1.42

NOTES

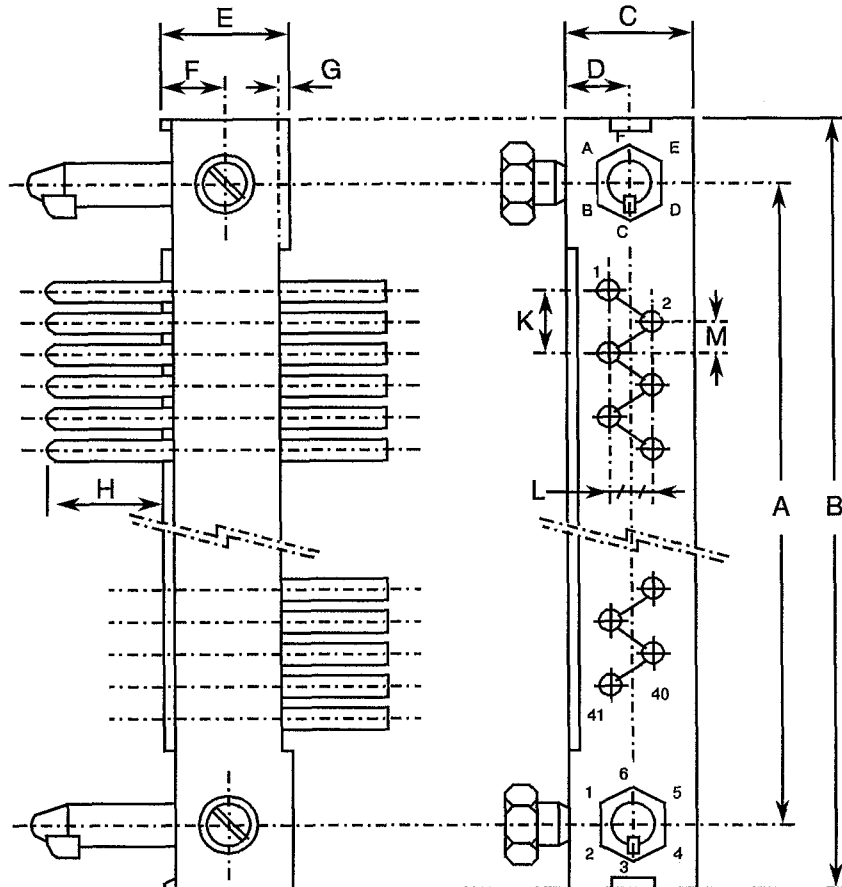
1. Weight: 3.1g.
2. Orientation of labelling of contacts and guiding devices is not a true representation.
3. The front of the insert shall be marked with the minimum marking shown.



FIGURE 2 - PHYSICAL DIMENSIONS (CONTINUED)

FIGURE 2(a) - INSERTS: PLUGS AND RECEPTACLES (CONTINUED)

CODE 03 - PLUG, 2 ROWS, 41 CONTACTS



SYMBOL	MILLIMETRES	
	MIN.	MAX.
A	60.81	61.11
B	68.50	69.00
C	6.30	6.40
D	3.10	3.30
E	7.75	8.05
F	3.80	4.00
G	0.25	0.60
H	3.60	4.80
K	2.39	2.69
L	2.39	2.69
M	1.12	1.42

NOTES

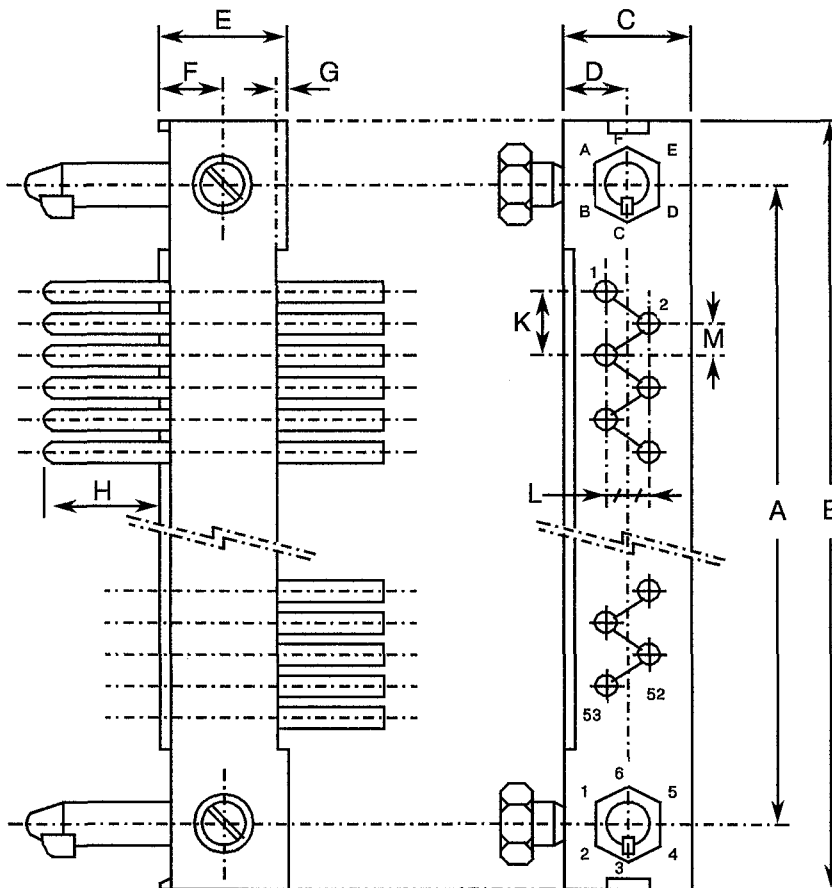
1. Weight: 3.8g.
2. Orientation of labelling of contacts and guiding devices is not a true representation.
3. The front of the insert shall be marked with the minimum marking shown.



FIGURE 2 - PHYSICAL DIMENSIONS (CONTINUED)

FIGURE 2(a) - INSERTS: PLUGS AND RECEPTACLES (CONTINUED)

CODE 04 - PLUG, 2 ROWS, 53 CONTACTS



SYMBOL	MILLIMETRES	
	MIN.	MAX.
A	76.05	76.35
B	83.70	84.20
C	6.30	6.40
D	3.10	3.30
E	7.75	8.05
F	3.80	4.00
G	0.25	0.60
H	3.60	4.80
K	2.39	2.69
L	2.39	2.69
M	1.12	1.42

NOTES

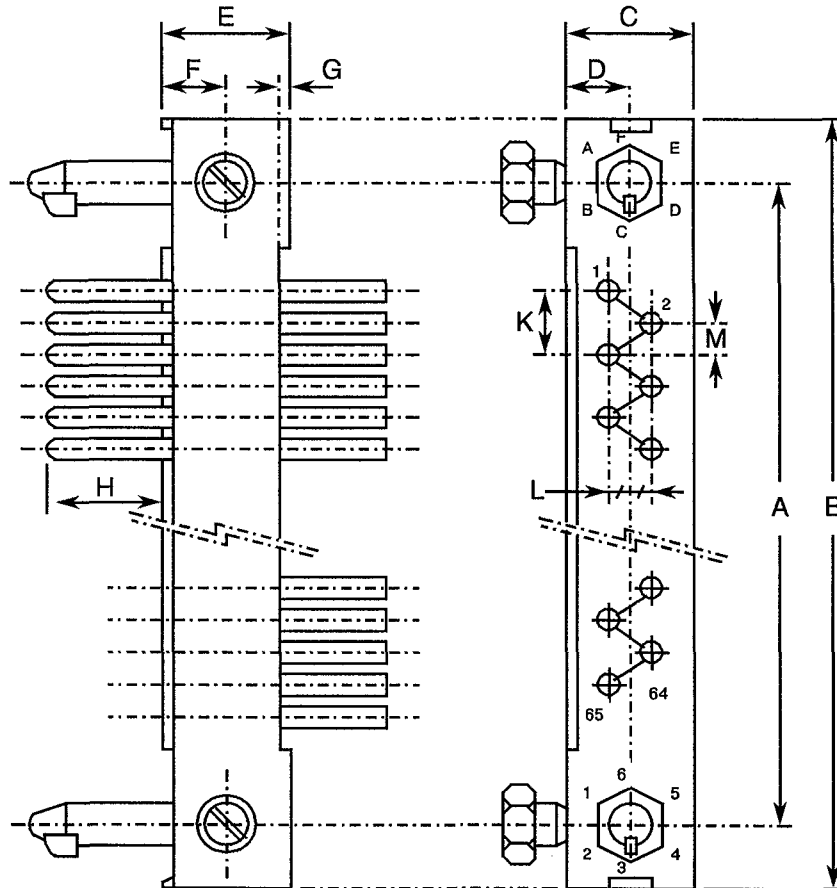
1. Weight: 4.7g.
2. Orientation of labelling of contacts and guiding devices is not a true representation.
3. The front of the insert shall be marked with the minimum marking shown.



FIGURE 2 - PHYSICAL DIMENSIONS (CONTINUED)

FIGURE 2(a) - INSERTS: PLUGS AND RECEPTACLES (CONTINUED)

CODE 05 - PLUG, 2 ROWS, 65 CONTACTS



SYMBOL	MILLIMETRES	
	MIN.	MAX.
A	91.29	91.59
B	99.00	99.50
C	6.30	6.40
D	3.10	3.30
E	7.75	8.05
F	3.80	4.00
G	0.25	0.60
H	3.60	4.80
K	2.39	2.69
L	2.39	2.69
M	1.12	1.42

NOTES

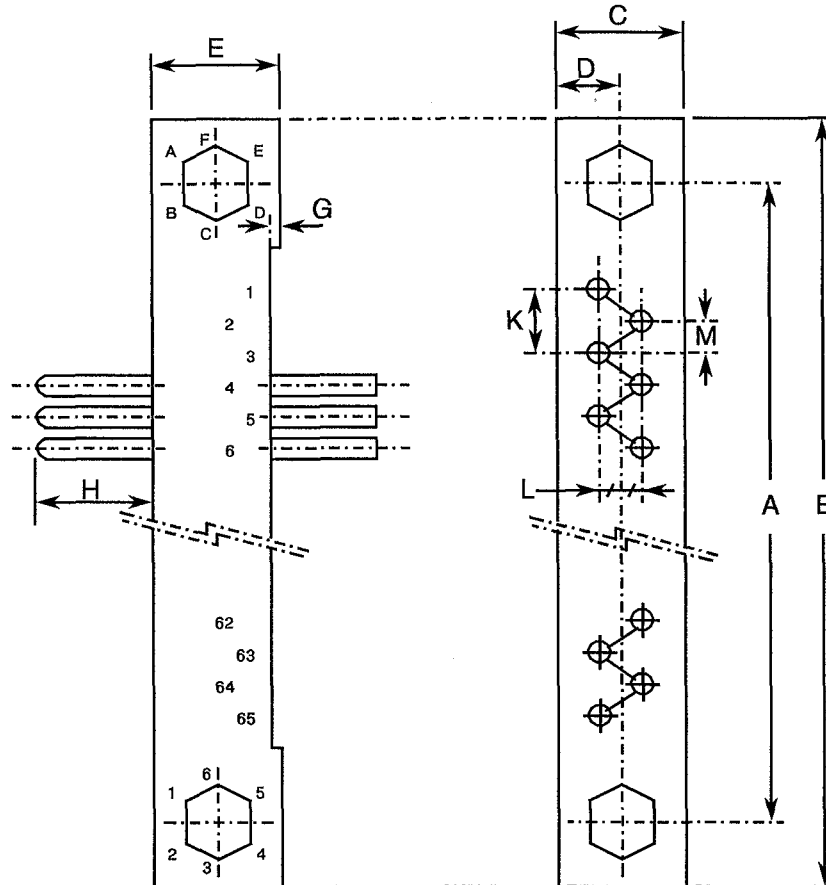
1. Weight: 5.5g.
2. Orientation of labelling of contacts and guiding devices is not a true representation.
3. The front of the insert shall be marked with the minimum marking shown.



FIGURE 2 - PHYSICAL DIMENSIONS(CONTINUED)

FIGURE 2(a) - INSERTS: PLUGS AND RECEPTACLES (CONTINUED)

CODE 06 - PLUG, 2 ROWS, 65 CONTACTS



SYMBOL	MILLIMETRES	
	MIN.	MAX.
A	91.29	91.59
B	99.00	99.50
C	6.30	6.40
D	3.10	3.30
E	7.45	7.75
G	0.25	0.60
H	3.60	4.80
K	2.39	2.69
L	2.39	2.69
M	1.12	1.42

NOTES

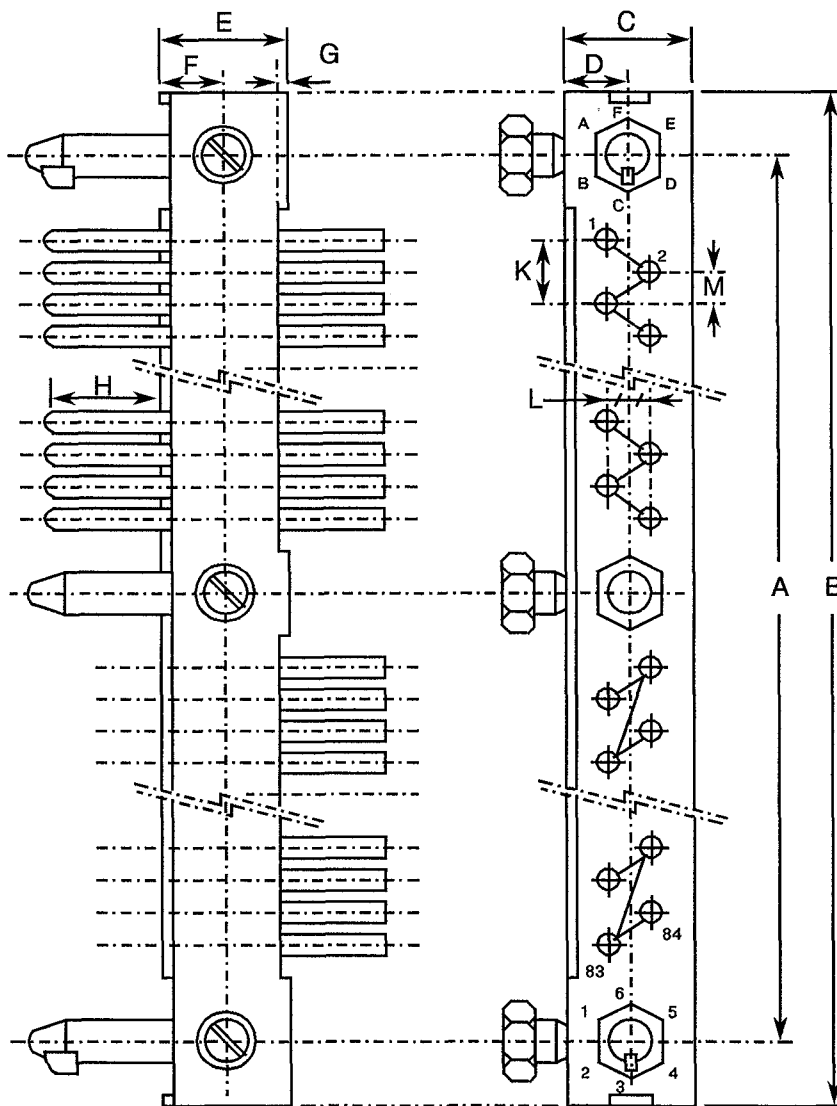
1. Weight: 5.5g.
2. Orientation of labelling of contacts and guiding devices is not a true representation.
3. The side of the insert shall be marked with the minimum marking shown.



FIGURE 2 - PHYSICAL DIMENSIONS(CONTINUED)

FIGURE 2(a) - INSERTS: PLUGS AND RECEPTACLES (CONTINUED)

CODE 07 - PLUG, 2 ROWS, 84 CONTACTS



SYMBOL	MILLIMETRES	
	MIN.	MAX.
A	121.77	122.07
B	129.40	129.90
C	6.30	6.40
D	3.10	3.30
E	7.75	8.05
F	3.80	4.00
G	0.25	0.60
H	3.60	4.80
K	2.39	2.69
L	2.39	2.69
M	1.12	1.42

NOTES

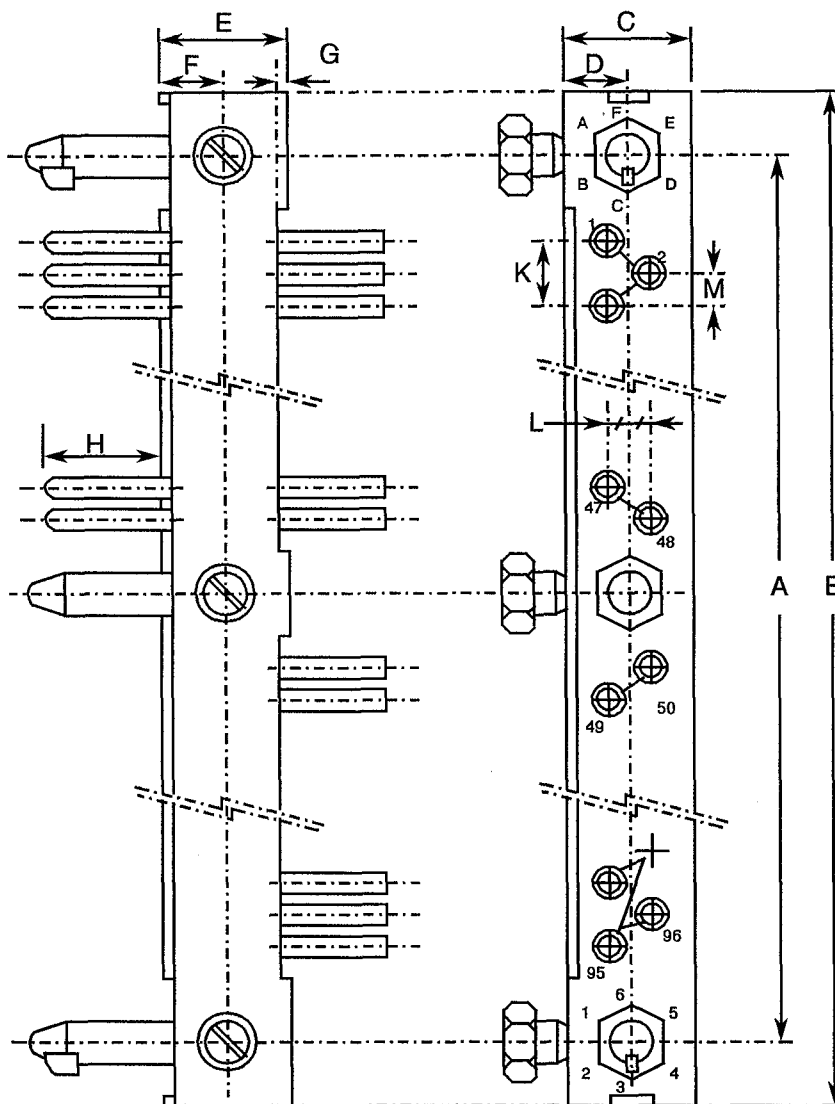
1. Weight: 7.1g.
2. Orientation of labelling of contacts and guiding devices is not a true representation.
3. The front of the insert shall be marked with the minimum marking shown.



FIGURE 2 - PHYSICAL DIMENSIONS(CONTINUED)

FIGURE 2(a) - INSERTS: PLUGS AND RECEPTACLES (CONTINUED)

CODE 08 - PLUG, 2 ROWS, 96 CONTACTS



SYMBOL	MILLIMETRES	
	MIN.	MAX.
A	137.01	137.31
B	144.70	145.20
C	6.30	6.40
D	3.10	3.30
E	7.75	8.05
F	3.80	4.00
G	0.25	0.60
H	3.60	4.80
K	2.39	2.69
L	2.39	2.69
M	1.12	1.42

NOTES

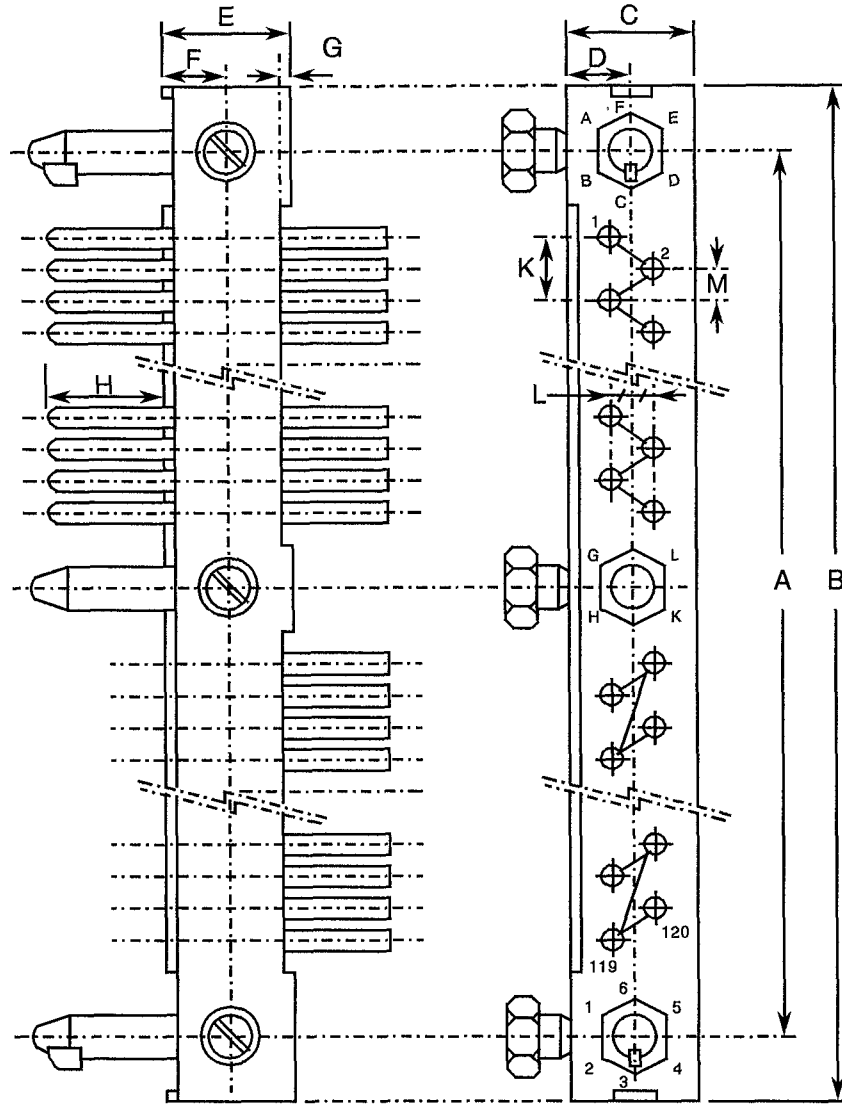
1. Weight: 8.5g.
2. Orientation of labelling of contacts and guiding devices is not a true representation.
3. The front of the insert shall be marked with the minimum marking shown.



FIGURE 2 - PHYSICAL DIMENSIONS(CONTINUED)

FIGURE 2(a) - INSERTS: PLUGS AND RECEPTACLES (CONTINUED)

CODE 10 - PLUG, 2 ROWS, 120 CONTACTS



SYMBOL	MILLIMETRES	
	MIN.	MAX.
A	167.49	167.79
B	175.10	175.60
C	6.30	6.40
D	3.10	3.30
E	7.75	8.05
F	3.80	4.00
G	0.25	0.60
H	3.60	4.80
K	2.39	2.69
L	2.39	2.69
M	1.12	1.42

NOTES

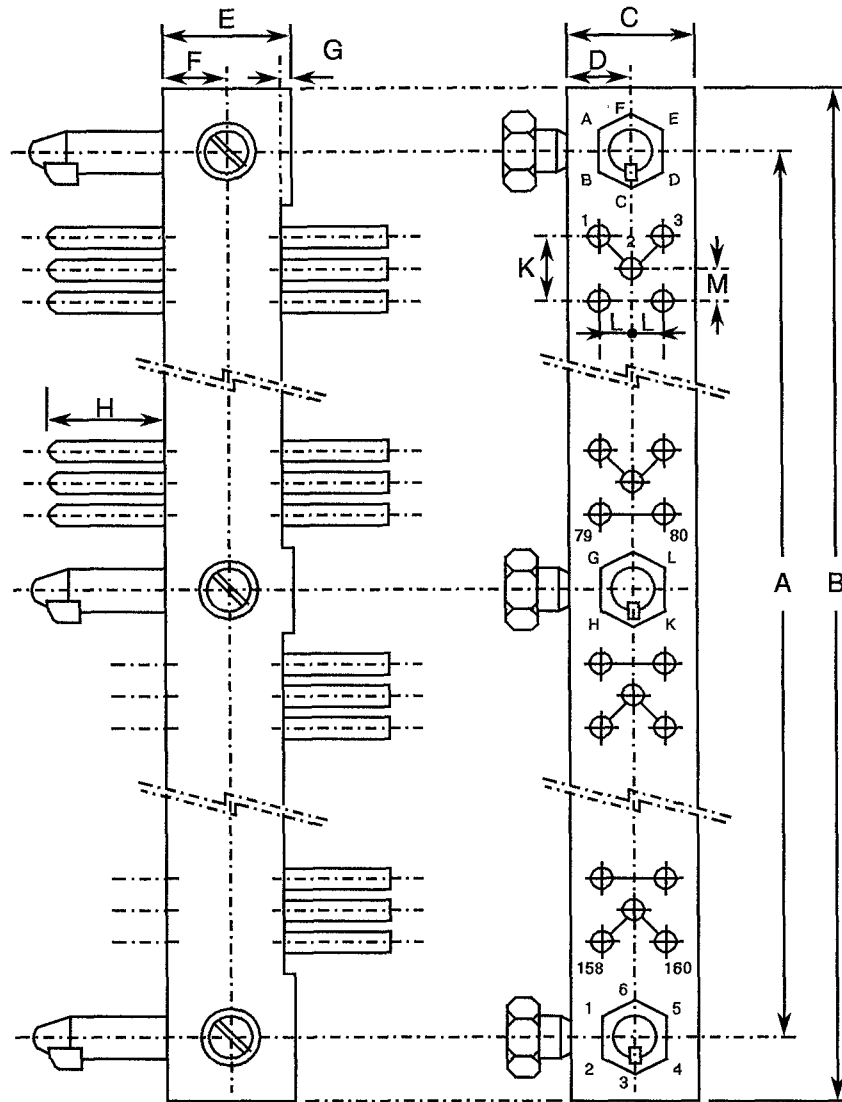
- Weight: 9.4g.
- Orientation of labelling of contacts and guiding devices is not a true representation.
- The front of the insert shall be marked with the minimum marking shown.



FIGURE 2 - PHYSICAL DIMENSIONS(CONTINUED)

FIGURE 2(a) - INSERTS: PLUGS AND RECEPTACLES (CONTINUED)

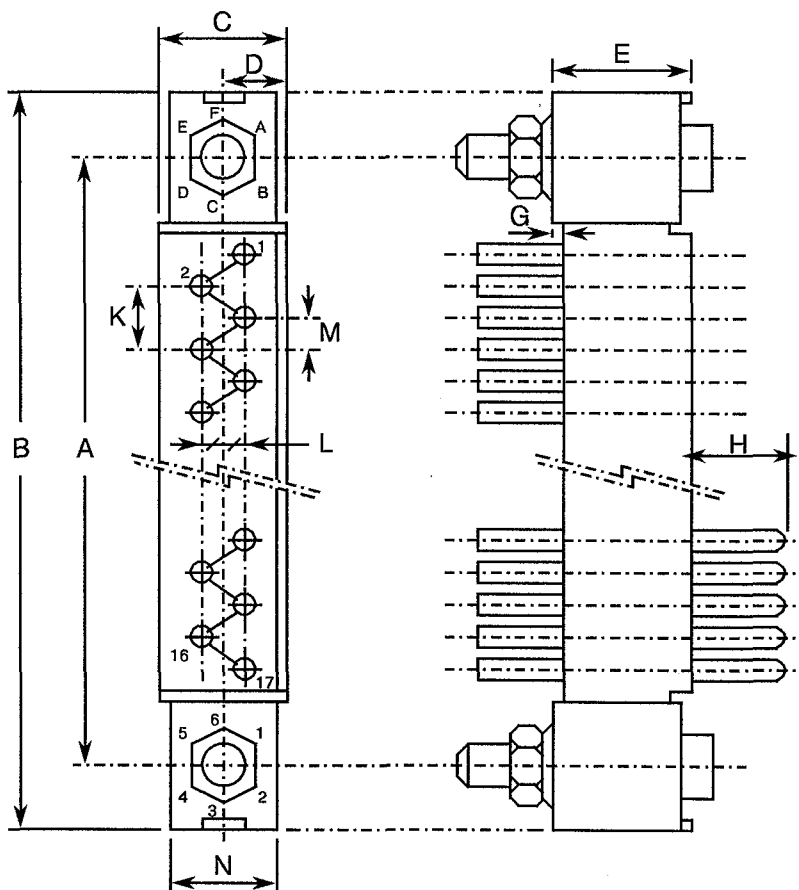
CODE 12 - PLUG, 3 ROWS, 160 CONTACTS



SYMBOL	MILLIMETRES	
	MIN.	MAX.
A	149.71	150.01
B	157.50	158.00
C	9.20	9.30
D	4.55	4.75
E	7.75	8.05
F	3.80	4.00
G	0.25	0.60
H	3.60	4.80
K	2.39	2.69
L	2.39	2.69
M	1.12	1.42

NOTES

1. Weight: 12.6g.
2. Orientation of labelling of contacts and guiding devices is not a true representation.
3. The front of the insert shall be marked with the minimum marking shown.

FIGURE 2 - PHYSICAL DIMENSIONS(CONTINUED)
FIGURE 2(a) - INSERTS: PLUGS AND RECEPTACLES (CONTINUED)
CODE 13 - RECEPTACLE, 2 ROWS, 17 CONTACTS


SYMBOL	MILLIMETRES	
	MIN.	MAX.
A	30.33	30.63
B	38.00	38.50
C	6.30	7.00
D	2.80	3.05
E	7.75	8.05
G	0.25	0.60
H	3.60	4.80
K	2.39	2.69
L	2.39	2.69
M	1.12	1.42
N	6.10	6.40

NOTES

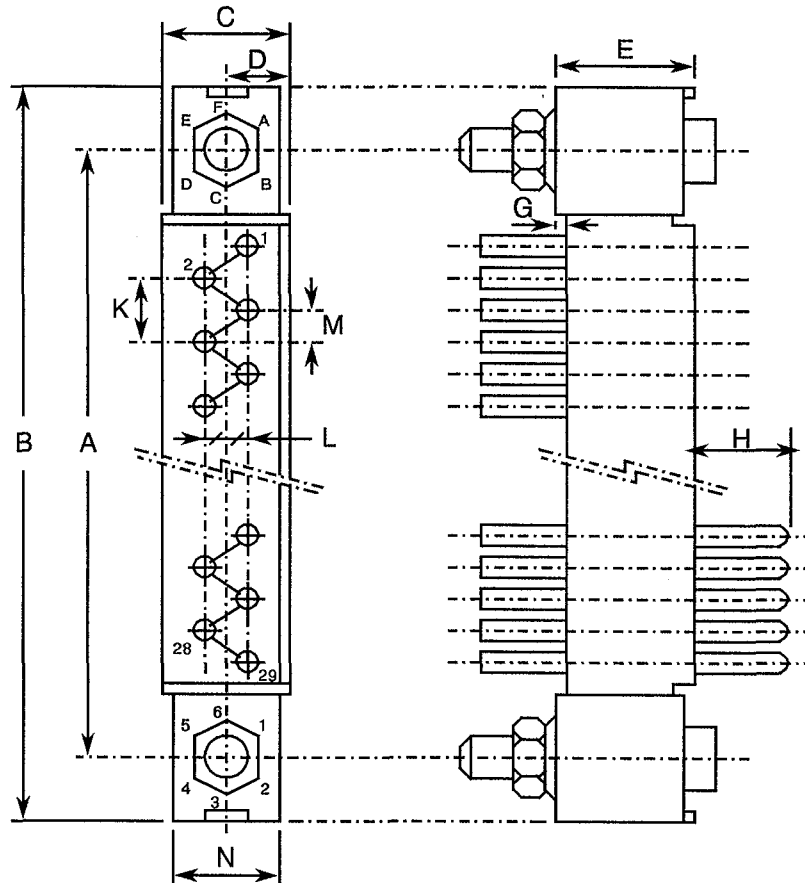
1. Weight: 2.5g.
2. Orientation of labelling of contacts and guiding devices is not a true representation.
3. The front of the insert shall be marked with the minimum marking shown.



FIGURE 2 - PHYSICAL DIMENSIONS(CONTINUED)

FIGURE 2(a) - INSERTS: PLUGS AND RECEPTACLES (CONTINUED)

CODE 14 - RECEPTACLE, 2 ROWS, 29 CONTACTS



SYMBOL	MILLIMETRES	
	MIN.	MAX.
A	45.57	45.87
B	53.20	53.70
C	6.30	7.00
D	2.80	3.05
E	7.75	8.05
G	0.25	0.60
H	3.60	4.80
K	2.39	2.69
L	2.39	2.69
M	1.12	1.42
N	6.10	6.40

NOTES

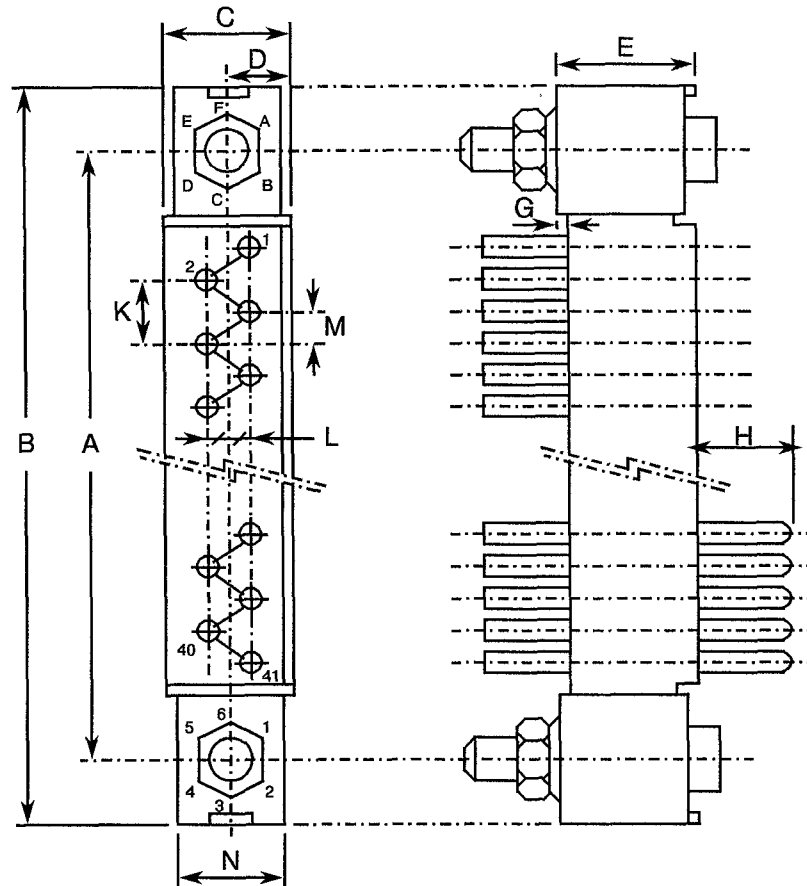
1. Weight: 3.3g.
2. Orientation of labelling of contacts and guiding devices is not a true representation.
3. The front of the insert shall be marked with the minimum marking shown.



FIGURE 2 - PHYSICAL DIMENSIONS(CONTINUED)

FIGURE 2(a) - INSERTS: PLUGS AND RECEPTACLES (CONTINUED)

CODE 15 - RECEPTACLE, 2 ROWS, 41 CONTACTS



SYMBOL	MILLIMETRES	
	MIN.	MAX.
A	60.81	61.11
B	68.50	69.00
C	6.30	7.00
D	2.80	3.05
E	7.75	8.05
G	0.25	0.60
H	3.60	4.80
K	2.39	2.69
L	2.39	2.69
M	1.12	1.42
N	6.10	6.40

NOTES

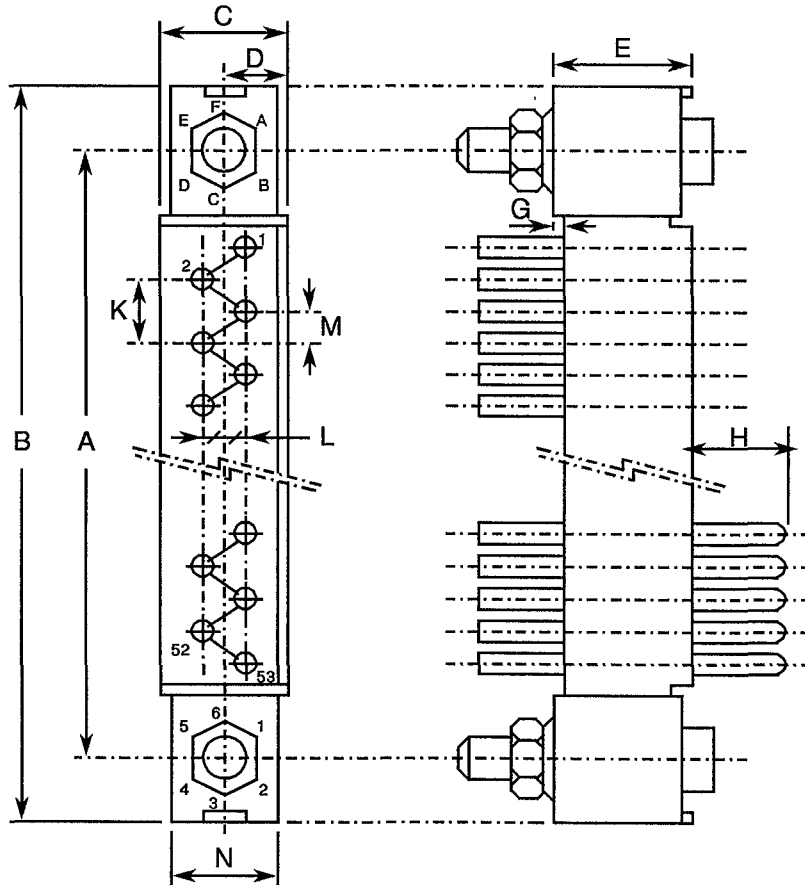
1. Weight: 4.2g.
2. Orientation of labelling of contacts and guiding devices is not a true representation.
3. The front of the insert shall be marked with the minimum marking shown.



FIGURE 2 - PHYSICAL DIMENSIONS(CONTINUED)

FIGURE 2(a) - INSERTS: PLUGS AND RECEPTACLES (CONTINUED)

CODE 16 - RECEPTACLE, 2 ROWS, 53 CONTACTS



SYMBOL	MILLIMETRES	
	MIN.	MAX.
A	76.05	76.35
B	83.70	84.20
C	6.30	7.00
D	2.80	3.05
E	7.75	8.05
G	0.25	0.60
H	3.60	4.80
K	2.39	2.69
L	2.39	2.69
M	1.12	1.42
N	6.10	6.40

NOTES

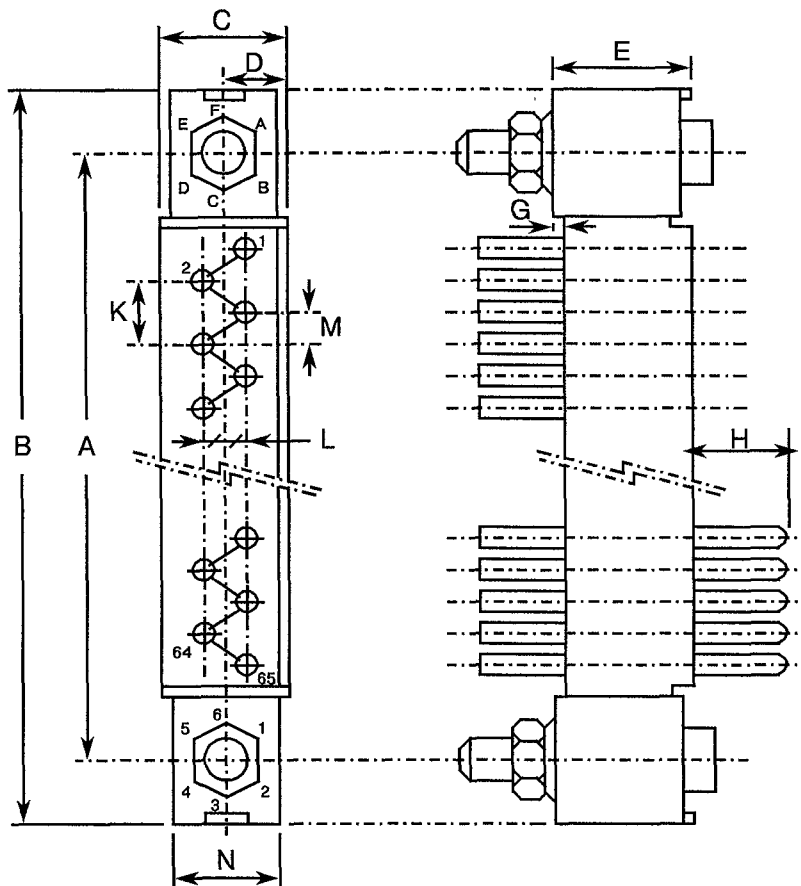
1. Weight: 5.3g.
2. Orientation of labelling of contacts and guiding devices is not a true representation.
3. The front of the insert shall be marked with the minimum marking shown.



FIGURE 2 - PHYSICAL DIMENSIONS(CONTINUED)

FIGURE 2(a) - INSERTS: PLUGS AND RECEPTACLES (CONTINUED)

CODE 17 - RECEPTACLE, 2 ROWS, 65 CONTACTS



SYMBOL	MILLIMETRES	
	MIN.	MAX.
A	91.29	91.59
B	99.00	99.50
C	6.30	7.00
D	2.80	3.05
E	7.75	8.05
G	0.25	0.60
H	3.60	4.80
K	2.39	2.69
L	2.39	2.69
M	1.12	1.42
N	6.10	6.40

NOTES

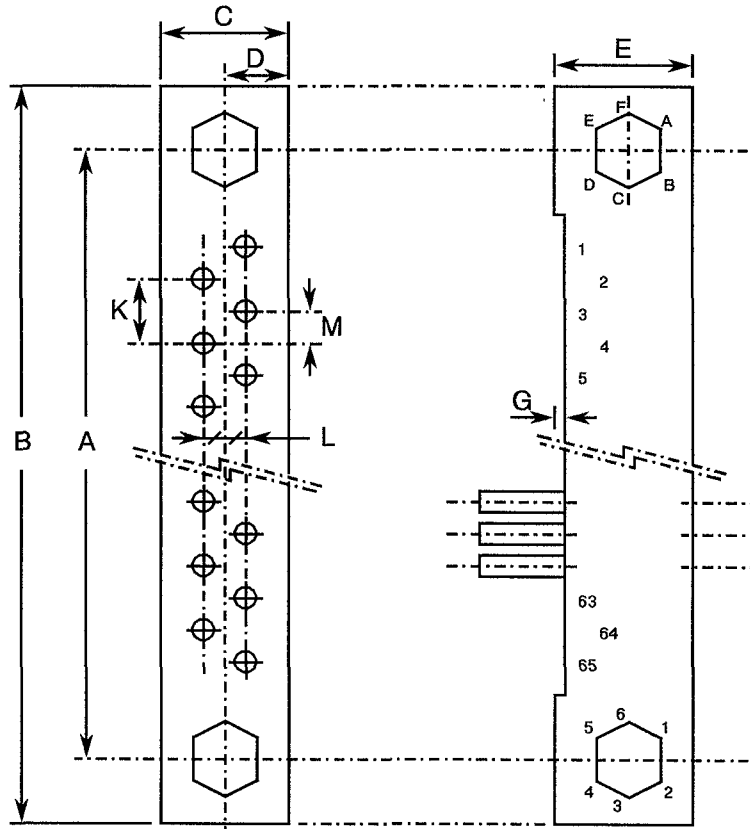
1. Weight: 6.0g.
2. Orientation of labelling of contacts and guiding devices is not a true representation.
3. The front of the insert shall be marked with the minimum marking shown.



FIGURE 2 - PHYSICAL DIMENSIONS(CONTINUED)

FIGURE 2(a) - INSERTS: PLUGS AND RECEPTACLES (CONTINUED)

CODE 18 - RECEPTACLE, 2 ROWS, 65 CONTACTS



SYMBOL	MILLIMETRES	
	MIN.	MAX.
A	91.29	91.59
B	99.00	99.50
C	6.30	6.40
D	3.10	3.30
E	7.45	7.75
G	0.25	0.60
K	2.39	2.69
L	2.39	2.69
M	1.12	1.42

NOTES

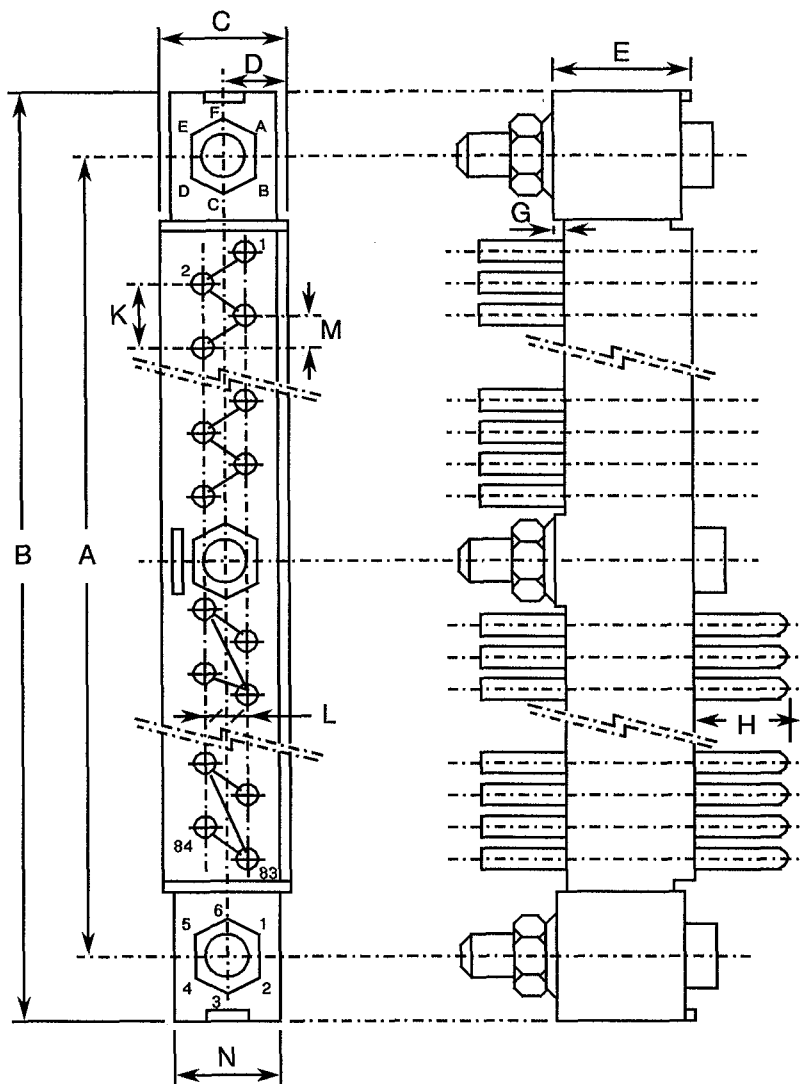
1. Weight: 5.5g.
2. Orientation of labelling of contacts and guiding devices is not a true representation.
3. The side of the insert shall be marked with the minimum marking shown.



FIGURE 2 - PHYSICAL DIMENSIONS(CONTINUED)

FIGURE 2(a) - INSERTS: PLUGS AND RECEPTACLES (CONTINUED)

CODE 19 - RECEPTACLE, 2 ROWS, 84 CONTACTS



SYMBOL	MILLIMETRES	
	MIN.	MAX.
A	121.77	122.07
B	129.40	129.90
C	6.30	7.00
D	2.80	3.05
E	7.75	8.05
G	0.25	0.60
H	3.60	4.80
K	2.39	2.69
L	2.39	2.69
M	1.12	1.42
N	6.10	6.40

NOTES

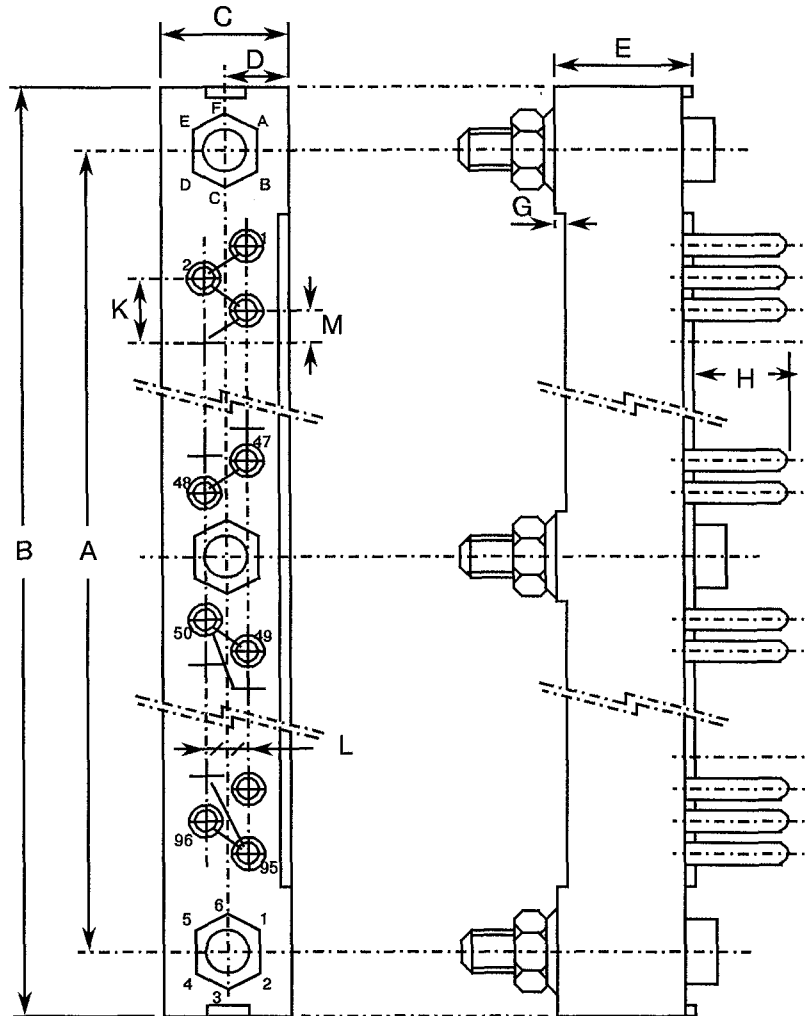
1. Weight: 8.0g.
2. Orientation of labelling of contacts and guiding devices is not a true representation.
3. The front of the insert shall be marked with the minimum marking shown.



FIGURE 2 - PHYSICAL DIMENSIONS(CONTINUED)

FIGURE 2(a) - INSERTS: PLUGS AND RECEPTACLES (CONTINUED)

CODE 20 - RECEPTACLE, 2 ROWS, 96 CONTACTS



NOTES

1. Weight: 9.44g.
2. Orientation of labelling of contacts and guiding devices is not a true representation.
3. The front of the insert shall be marked with the minimum marking shown.

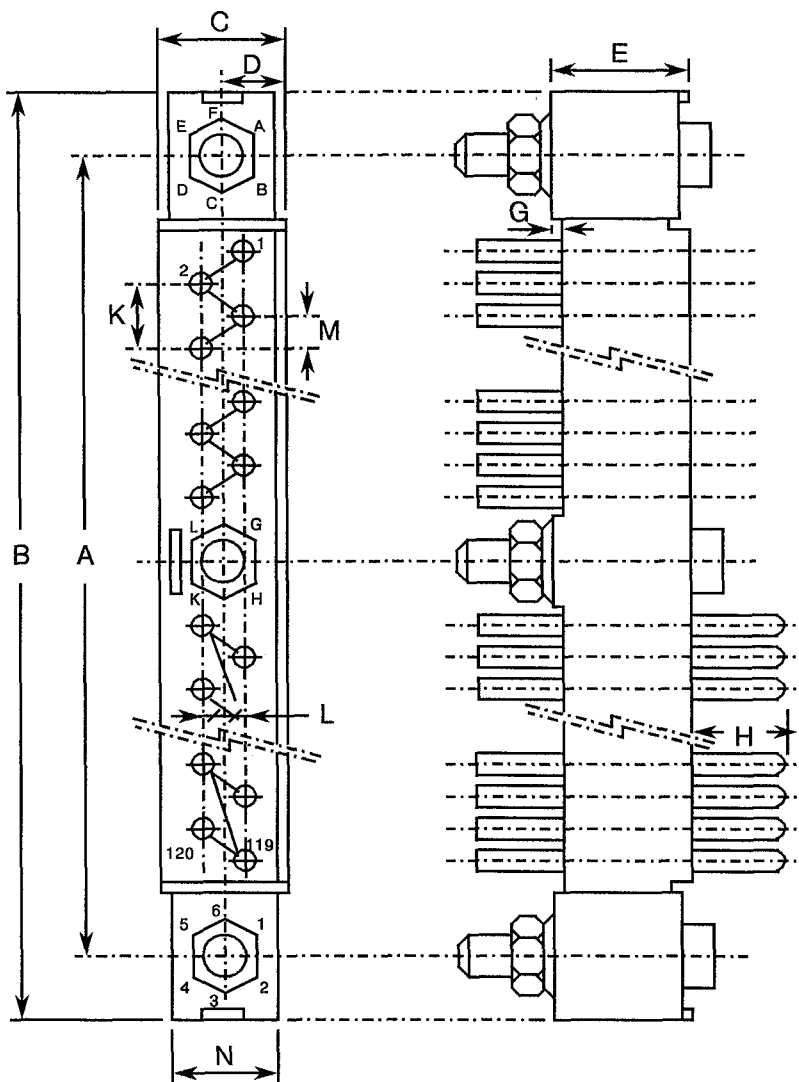
SYMBOL	MILLIMETRES	
	MIN.	MAX.
A	137.01	137.31
B	144.70	145.20
C	6.30	7.00
D	2.80	3.05
E	7.75	8.05
G	0.25	0.60
H	3.60	4.80
K	2.39	2.69
L	2.39	2.69
M	1.12	1.42



FIGURE 2 - PHYSICAL DIMENSIONS(CONTINUED)

FIGURE 2(a) - INSERTS: PLUGS AND RECEPTACLES (CONTINUED)

CODE 22 - RECEPTACLE, 2 ROWS, 120 CONTACTS



NOTES

1. Weight: 10.8g.
2. Orientation of labelling of contacts and guiding devices is not a true representation.
3. The front of the insert shall be marked with the minimum marking shown.

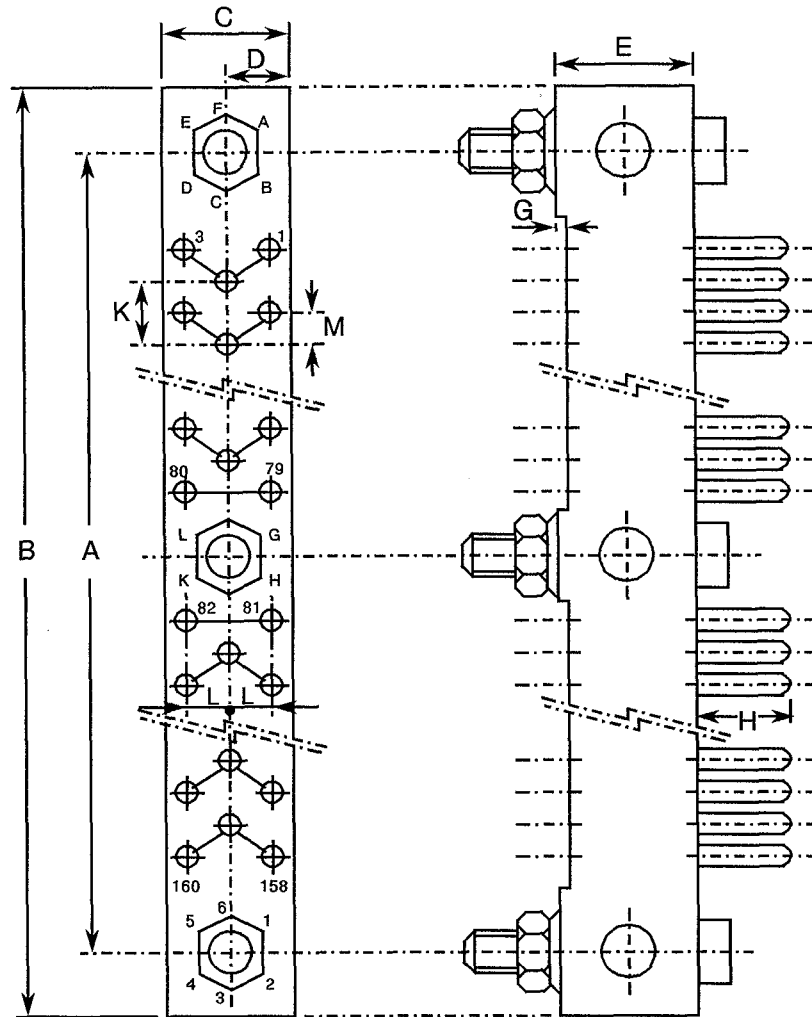
SYMBOL	MILLIMETRES	
	MIN.	MAX.
A	167.49	167.79
B	175.10	175.60
C	6.30	7.00
D	2.80	3.05
E	7.75	8.05
G	0.25	0.60
H	3.60	4.80
K	2.39	2.69
L	2.39	2.69
M	1.12	1.42
N	6.10	6.40



FIGURE 2 - PHYSICAL DIMENSIONS(CONTINUED)

FIGURE 2(a) - INSERTS: PLUGS AND RECEPTACLES (CONTINUED)

CODE 24 - RECEPTACLE, 3 ROWS, 160 CONTACTS



NOTES

1. Weight: 12.6g.
2. Orientation of labelling of contacts and guiding devices is not a true representation.
3. The front of the insert shall be marked with the minimum marking shown.

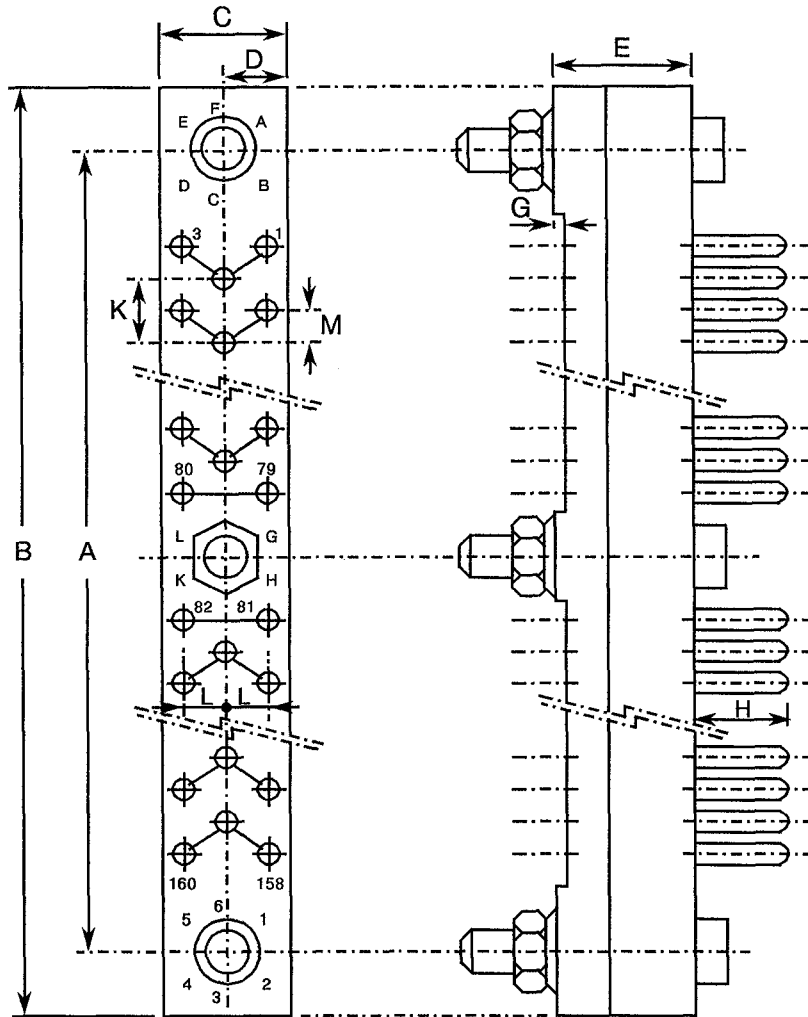
SYMBOL	MILLIMETRES	
	MIN.	MAX.
A	149.71	150.01
B	157.50	158.00
C	9.20	9.30
D	4.55	4.75
E	7.75	8.05
G	0.25	0.60
H	3.60	4.80
K	2.39	2.69
L	2.39	2.69
M	1.12	1.42



FIGURE 2 - PHYSICAL DIMENSIONS(CONTINUED)

FIGURE 2(a) - INSERTS: PLUGS AND RECEPTACLES (CONTINUED)

CODE 25 - RECEPTACLE, 3 ROWS, 160 CONTACTS



NOTES

1. Weight: 14.8g.
2. Orientation of labelling of contacts and guiding devices is not a true representation.
3. The front of the insert shall be marked with the minimum marking shown.

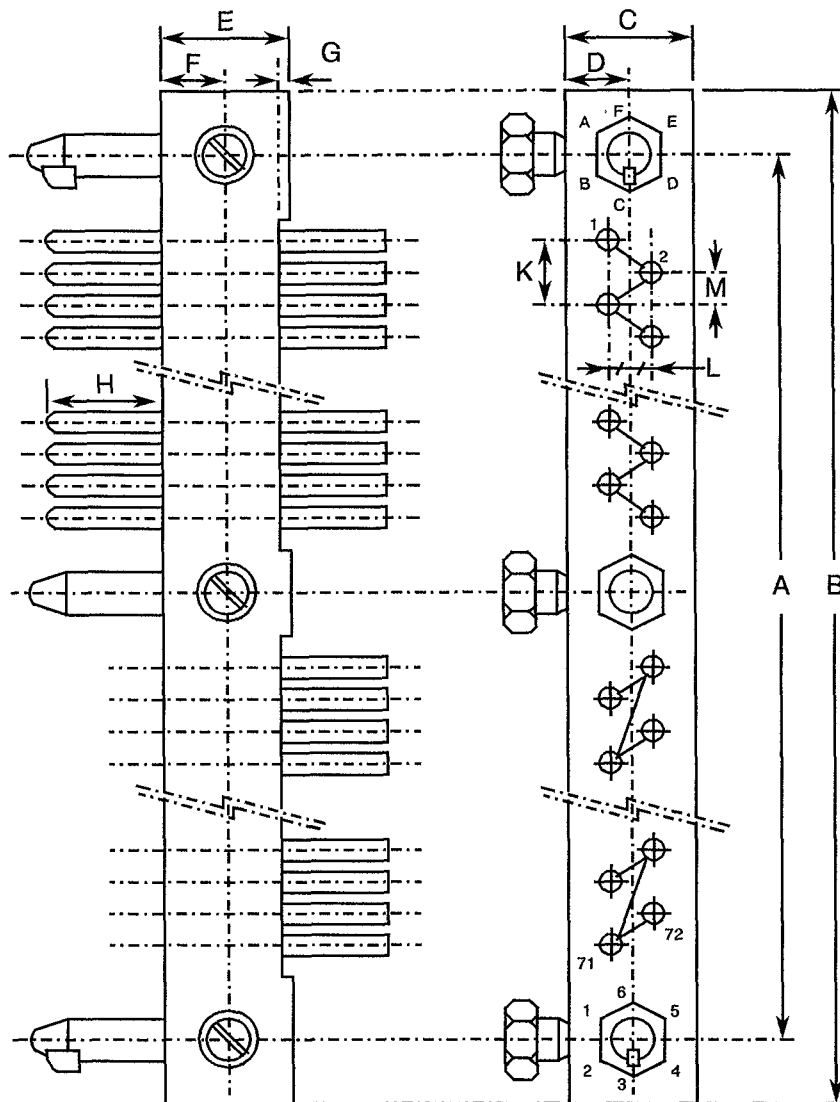
SYMBOL	MILLIMETRES	
	MIN.	MAX.
A	149.71	150.01
B	157.60	158.10
C	9.20	9.30
D	4.55	4.75
E	8.80	9.10
G	0.25	0.60
H	3.60	4.80
K	2.39	2.69
L	2.39	2.69
M	1.12	1.42



FIGURE 2 - PHYSICAL DIMENSIONS(CONTINUED)

FIGURE 2(a) - INSERTS: PLUGS AND RECEPTACLES (CONTINUED)

CODE 56 - PLUG, 2 ROWS, 72 CONTACTS



NOTES

1. Weight: 7.1g.
2. Orientation of labelling of contacts and guiding devices is not a true representation.
3. The front of the insert shall be marked with the minimum marking shown.

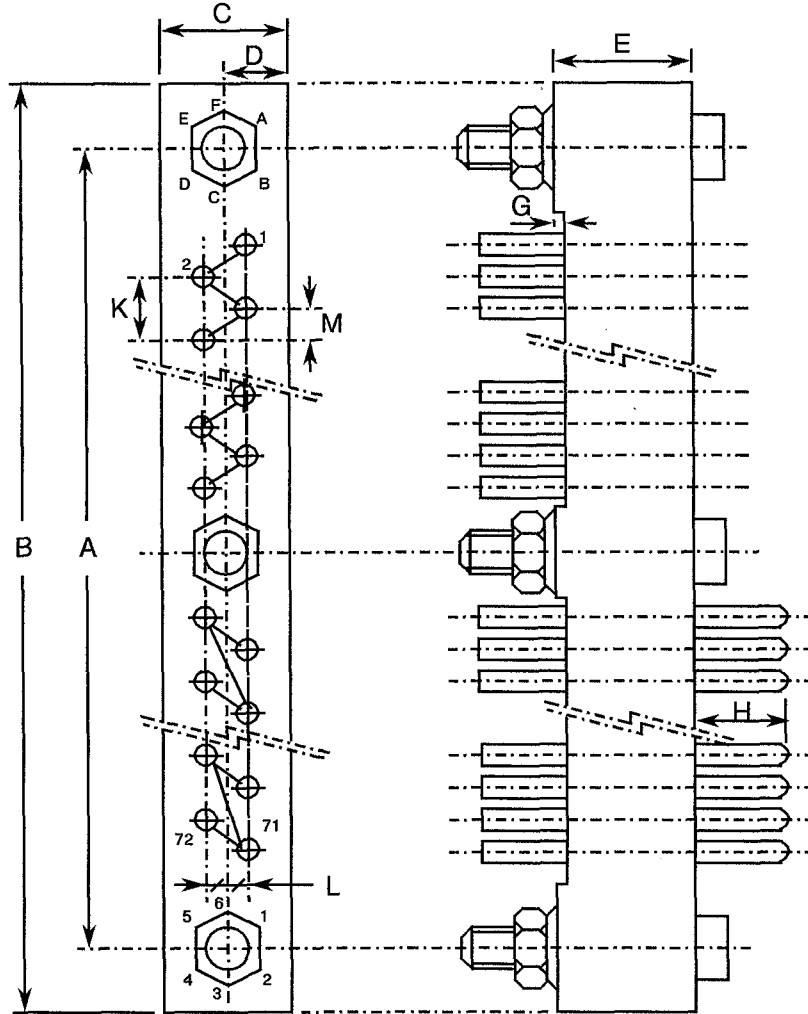
SYMBOL	MILLIMETRES	
	MIN.	MAX.
A	106.53	106.83
B	114.20	114.70
C	6.30	6.40
D	3.10	3.30
E	7.75	8.05
F	3.80	4.00
G	0.25	0.60
H	3.60	4.80
K	2.39	2.69
L	2.39	2.69
M	1.12	1.42



FIGURE 2 - PHYSICAL DIMENSIONS(CONTINUED)

FIGURE 2(a) - INSERTS: PLUGS AND RECEPTACLES (CONTINUED)

CODE 57 - RECEPTACLE, 2 ROWS, 72 CONTACTS



NOTES

1. Weight: 8.0g.
2. Orientation of labelling of contacts and guiding devices is not a true representation.
3. The front of the insert shall be marked with the minimum marking shown.

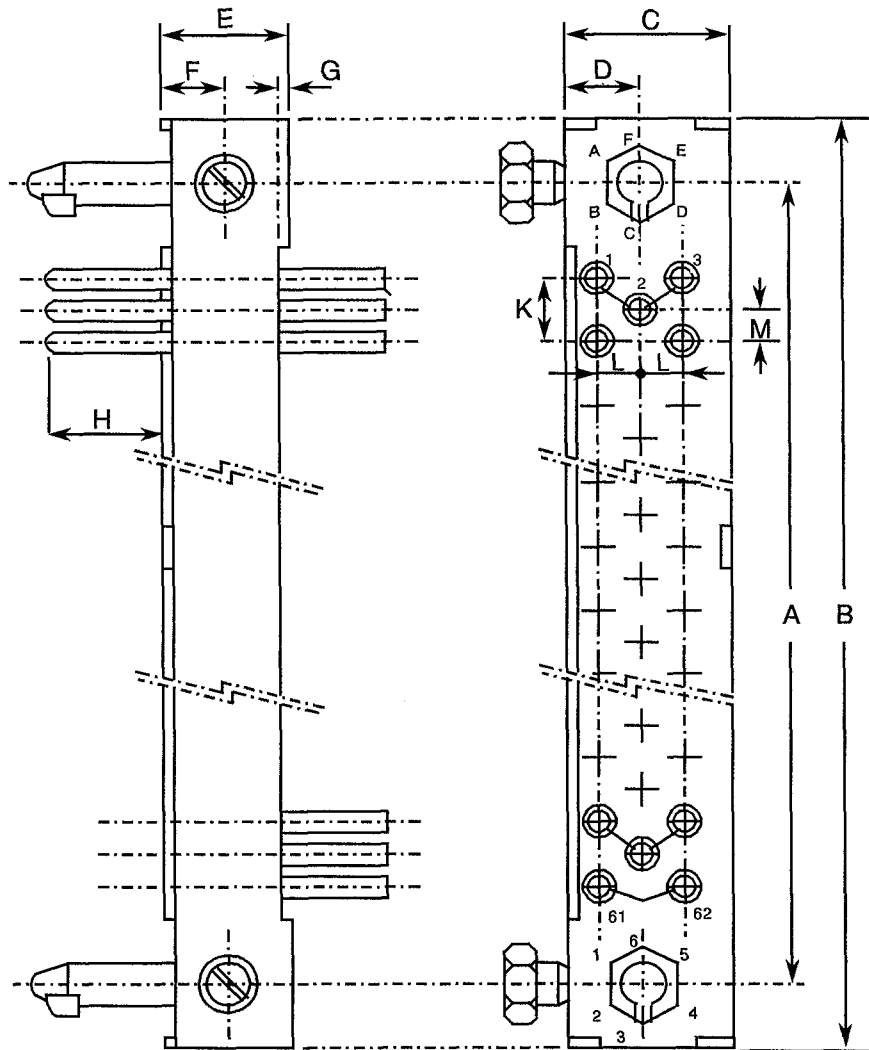
SYMBOL	MILLIMETRES	
	MIN.	MAX.
A	106.53	106.83
B	114.20	114.70
C	6.30	7.00
D	2.80	3.05
E	7.75	8.05
G	0.25	0.60
H	3.60	4.80
K	2.39	2.69
L	2.39	2.69
M	1.12	1.42



FIGURE 2 - PHYSICAL DIMENSIONS(CONTINUED)

FIGURE 2(a) - INSERTS: PLUGS AND RECEPTACLES (CONTINUED)

CODE 58 - PLUG, 3 ROWS, 62 CONTACTS



SYMBOL	MILLIMETRES	
	MIN.	MAX.
A	60.81	61.11
B	68.50	69.00
C	9.40	9.60
D	4.35	4.55
E	7.75	8.05
F	3.80	4.00
G	0.25	0.60
H	3.60	4.80
K	2.39	2.69
L	2.39	2.69
M	1.12	1.42

NOTES

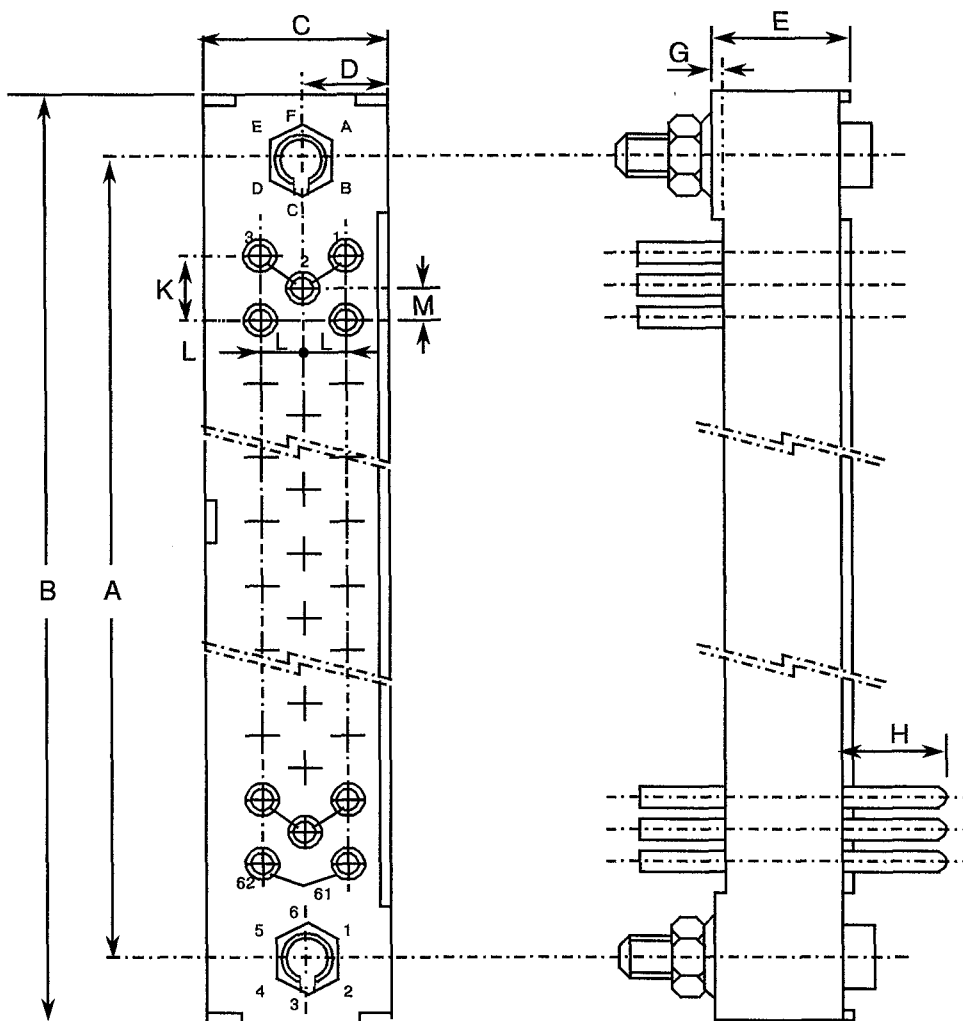
1. Weight: 6.3g.
2. Orientation of labelling of contacts and guiding devices is not a true representation.
3. The front of the insert shall be marked with the minimum marking shown.



FIGURE 2 - PHYSICAL DIMENSIONS(CONTINUED)

FIGURE 2(a) - INSERTS: PLUGS AND RECEPTACLES (CONTINUED)

CODE 59 - RECEPTACLE, 3 ROWS, 62 CONTACTS



SYMBOL	MILLIMETRES	
	MIN.	MAX.
A	60.81	61.11
B	68.50	69.00
C	9.15	9.35
D	4.05	4.25
E	7.75	8.05
G	0.25	0.60
H	3.60	4.80
K	2.39	2.69
L	2.39	2.69
M	1.12	1.42

NOTES

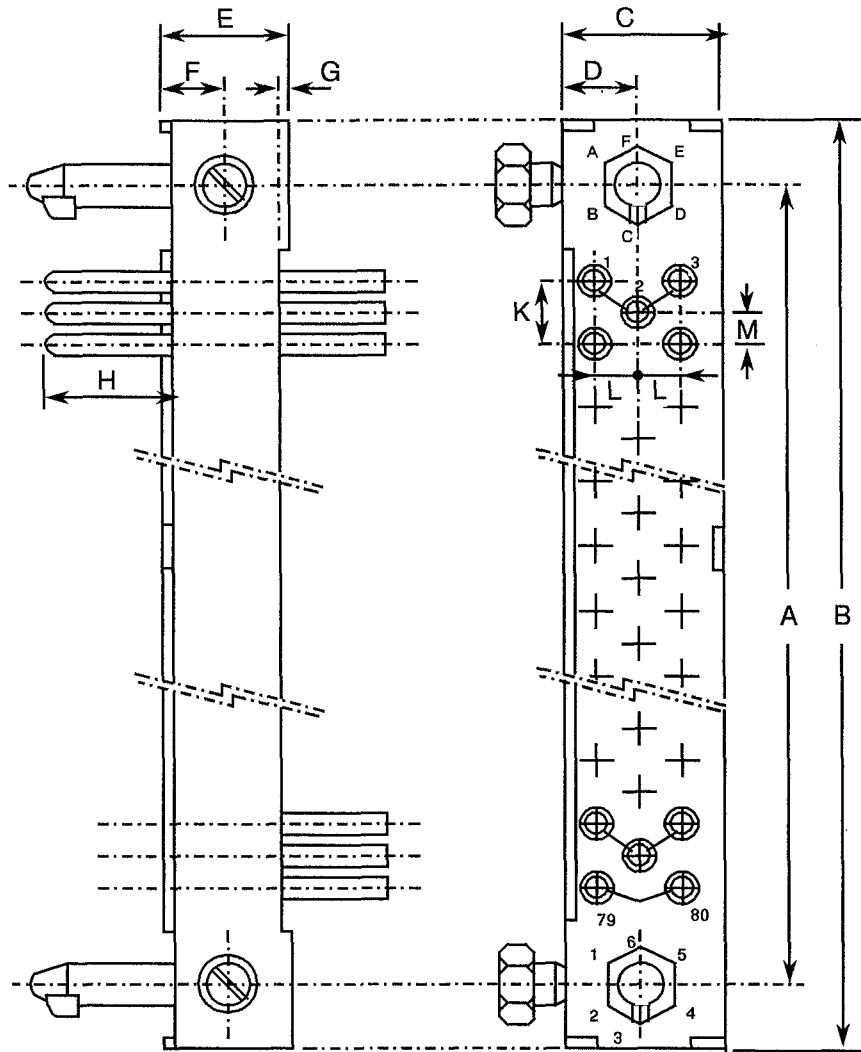
1. Weight: 6.3g.
2. Orientation of labelling of contacts and guiding devices is not a true representation.
3. The front of the insert shall be marked with the minimum marking shown.



FIGURE 2 - PHYSICAL DIMENSIONS(CONTINUED)

FIGURE 2(a) - INSERTS: PLUGS AND RECEPTACLES (CONTINUED)

CODE 60 - PLUG, 3 ROWS, 80 CONTACTS



SYMBOL	MILLIMETRES	
	MIN.	MAX.
A	76.05	76.35
B	83.70	84.20
C	9.40	9.60
D	4.35	4.55
E	7.75	8.05
F	3.80	4.00
G	0.25	0.60
H	3.60	4.80
K	2.39	2.69
L	2.39	2.69
M	1.12	1.42

NOTES

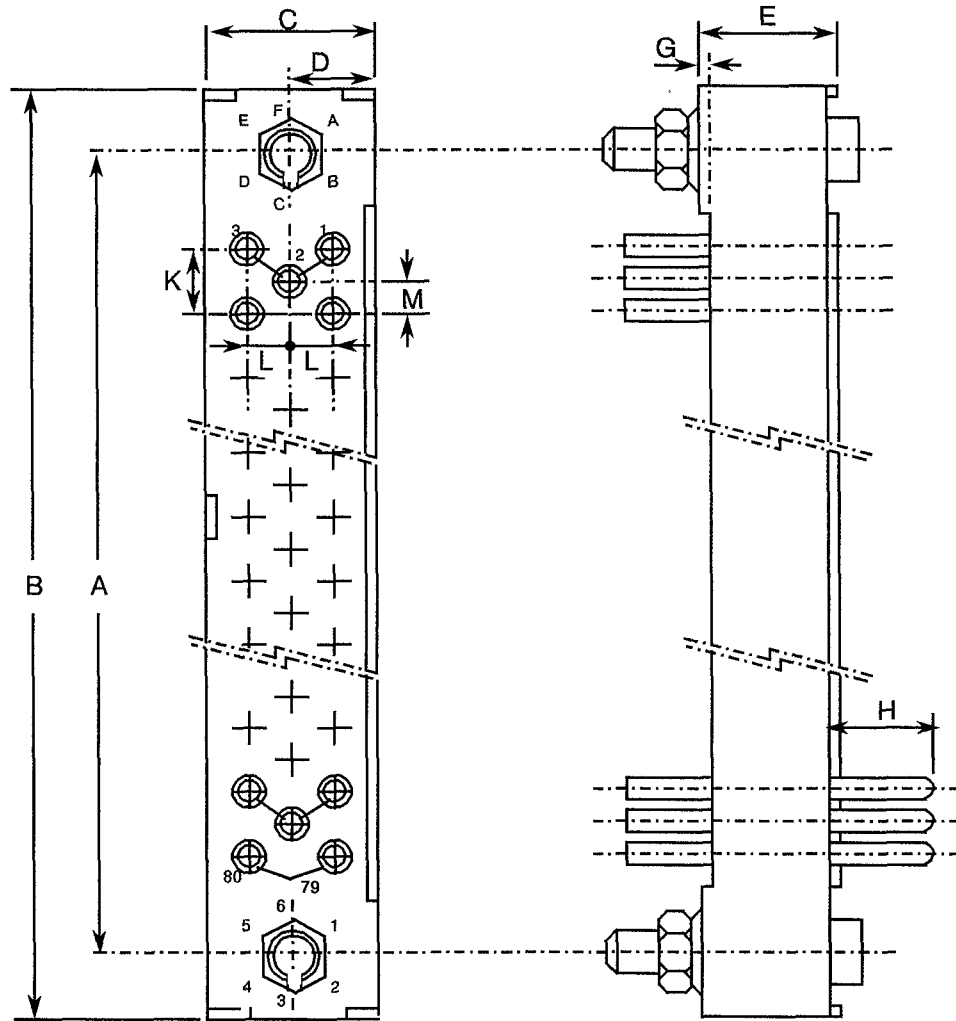
1. Weight: 7.7g.
2. Orientation of labelling of contacts and guiding devices is not a true representation.
3. The front of the insert shall be marked with the minimum marking shown.



FIGURE 2 - PHYSICAL DIMENSIONS(CONTINUED)

FIGURE 2(a) - INSERTS: PLUGS AND RECEPTACLES (CONTINUED)

CODE 61 - RECEPTACLE, 3 ROWS, 80 CONTACTS



NOTES

1. Weight: 7.4g.
2. Orientation of labelling of contacts and guiding devices is not a true representation.
3. The front of the insert shall be marked with the minimum marking shown.

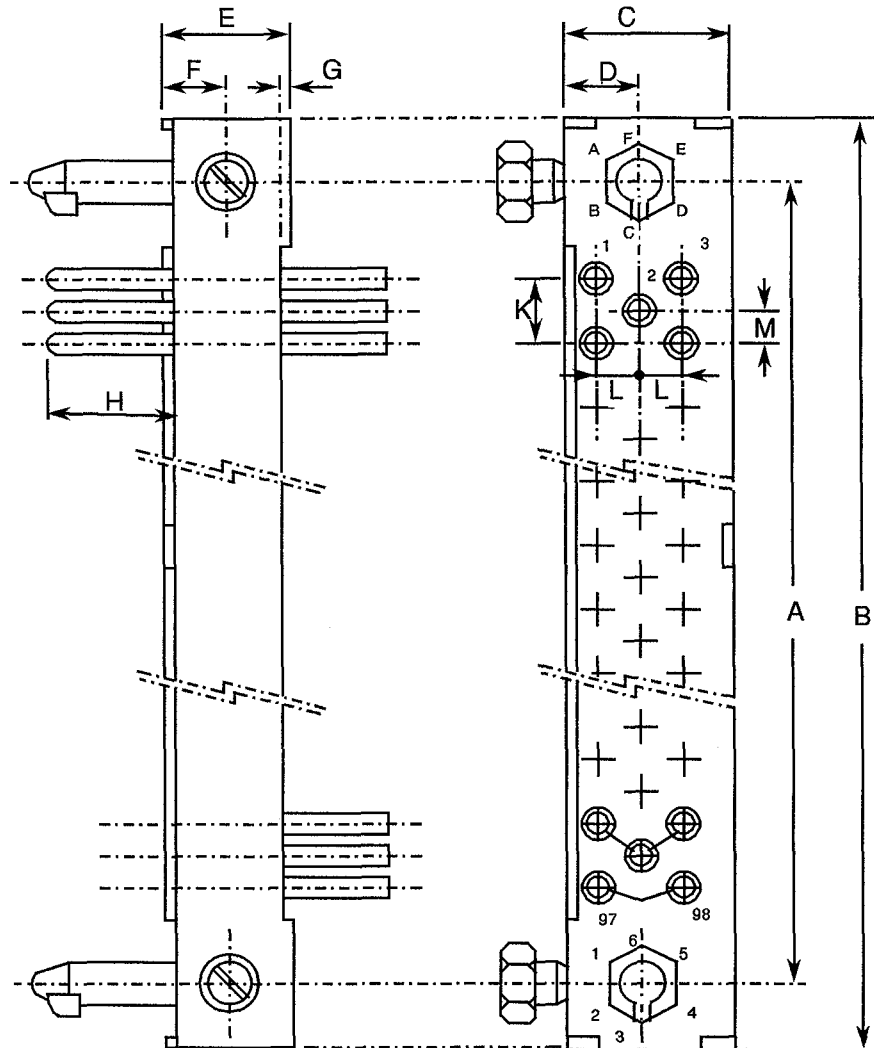
SYMBOL	MILLIMETRES	
	MIN.	MAX.
A	76.05	76.35
B	83.70	84.20
C	9.15	9.35
D	4.05	4.25
E	7.75	8.05
G	0.25	0.60
H	3.60	4.80
K	2.39	2.69
L	2.39	2.69
M	1.12	1.42



FIGURE 2 - PHYSICAL DIMENSIONS(CONTINUED)

FIGURE 2(a) - INSERTS: PLUGS AND RECEPTACLES (CONTINUED)

CODE 62 - PLUG, 3 ROWS, 98 CONTACTS



NOTES

1. Weight: 8.8g.
2. Orientation of labelling of contacts and guiding devices is not a true representation.
3. The front of the insert shall be marked with the minimum marking shown.

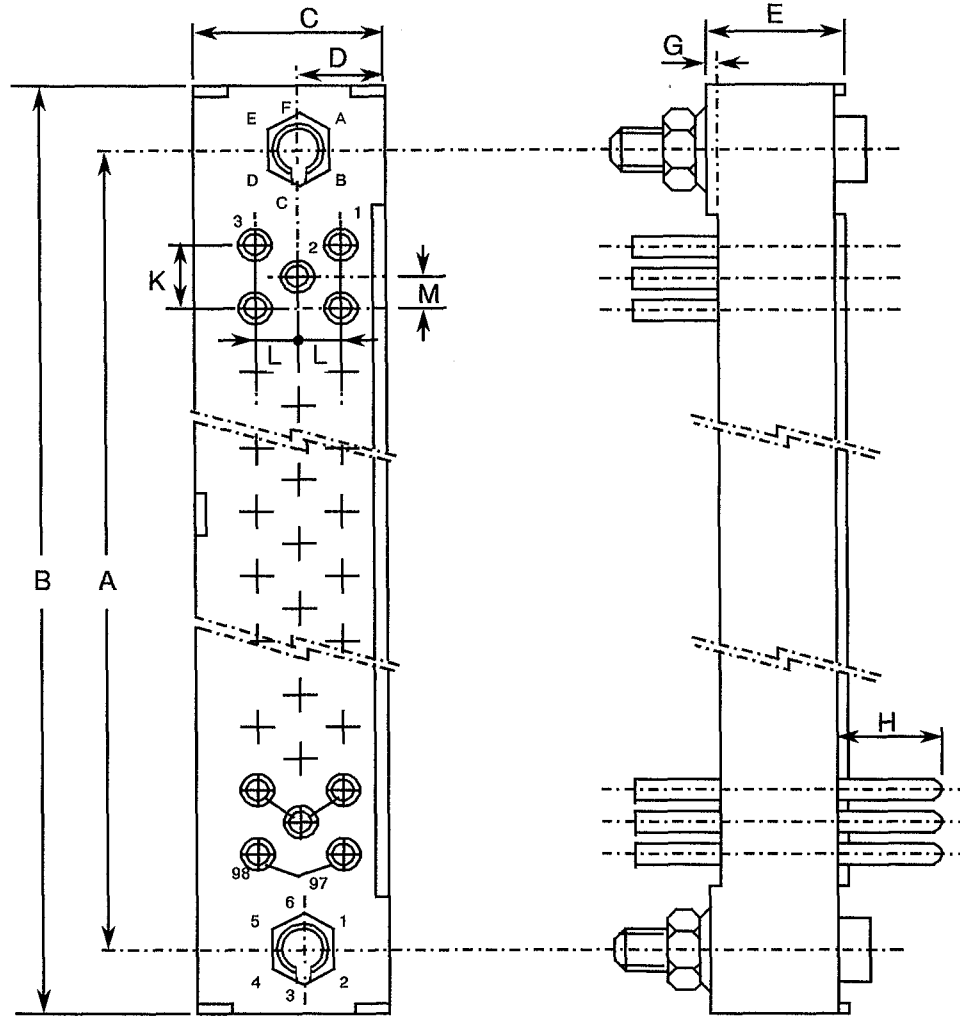
SYMBOL	MILLIMETRES	
	MIN.	MAX.
A	91.29	91.59
B	99.00	99.50
C	9.40	9.60
D	4.35	4.55
E	7.75	8.05
F	3.80	4.00
G	0.25	0.60
H	3.60	4.80
K	2.39	2.69
L	2.39	2.69
M	1.12	1.42



FIGURE 2 - PHYSICAL DIMENSIONS(CONTINUED)

FIGURE 2(a) - INSERTS: PLUGS AND RECEPTACLES (CONTINUED)

CODE 63 - RECEPTACLE, 3 ROWS, 98 CONTACTS



NOTES

1. Weight: 8.7g.
2. Orientation of labelling of contacts and guiding devices is not a true representation.
3. The front of the insert shall be marked with the minimum marking shown.

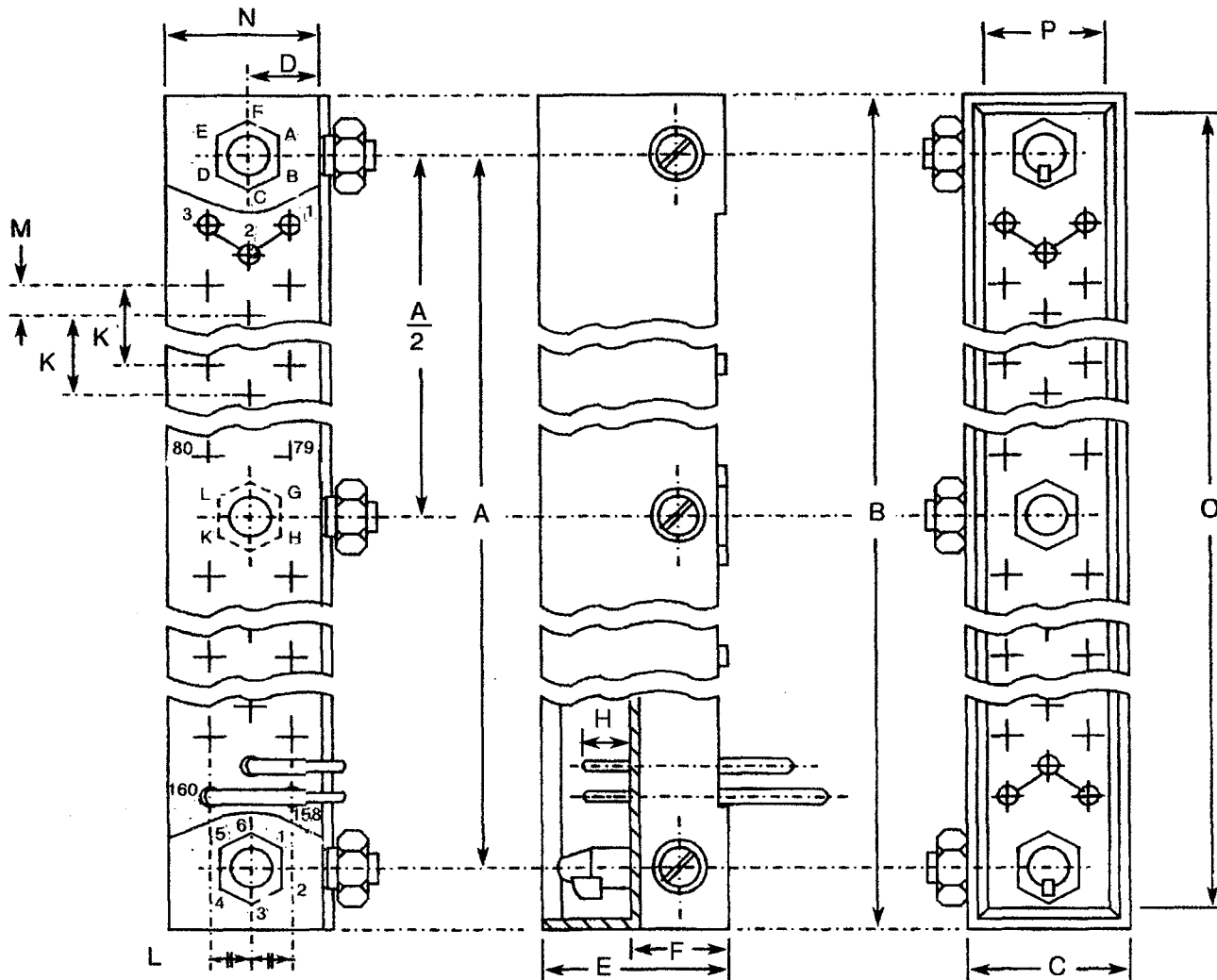
SYMBOL	MILLIMETRES	
	MIN.	MAX.
A	91.29	91.59
B	99.00	99.50
C	9.15	9.35
D	4.05	4.25
E	7.75	8.05
G	0.25	0.60
H	3.60	4.80
K	2.39	2.69
L	2.39	2.69
M	1.12	1.42



FIGURE 2 - PHYSICAL DIMENSIONS(CONTINUED)

FIGURE 2(a) - INSERTS: PLUGS AND RECEPTACLES (CONTINUED)

CODE 64 - PLUG, 3 ROWS, 160 CONTACTS - HPM SHROUDED



NOTES

1. Weight: 23g.
2. Orientation of labelling of contacts and guiding devices is not a true representation.
3. The front of the insert shall be marked with the minimum marking shown.

SYMBOL	MILLIMETRES	
	MIN.	MAX.
A	149.71	150.01
B	160.85	161.75
C	12.15	13.05
D	4.70	4.75
E	15.05	15.35
F	7.60	8.20
H	3.60	-4.80
K	2.49	2.59
L	2.49	2.59
M	1.22	1.32
N	10.65	11.85
O	158.45	158.75
P	9.75	10.05

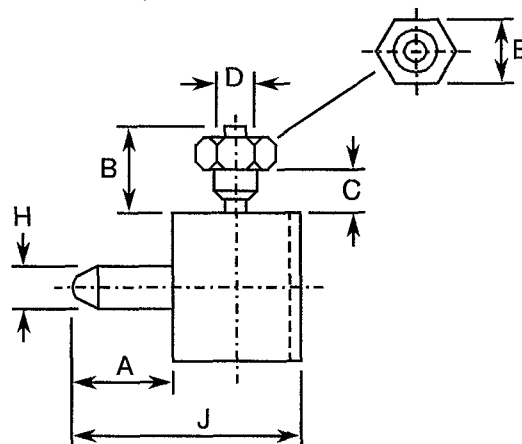


FIGURE 2 - PHYSICAL DIMENSIONS(CONTINUED)

FIGURE 2(b) - GUIDING AND LOCKING DEVICES

CODE 26

SYMBOL	MILLIMETRES	
	MIN.	MAX.
A	5.60	6.10
B	2.50	3.50
C	1.40	-
D	2.45	2.55
E	3.90	4.10
H	2.45	2.55
J	13.35	14.15

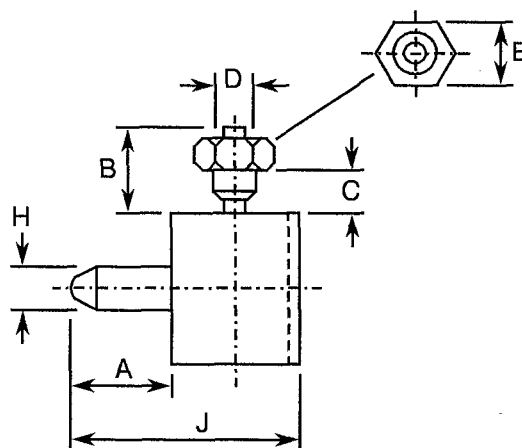


NOTES

1. Weight: 1.2g.
2. Torque: 11Ncm.

CODE 27

SYMBOL	MILLIMETRES	
	MIN.	MAX.
A	5.60	6.10
B	2.94	4.00
C	1.40	-
D	2.45	2.55
E	3.90	4.10
H	2.45	2.55
J	13.35	14.15



NOTES

1. Weight: 1.2g.
2. Torque: 11Ncm.

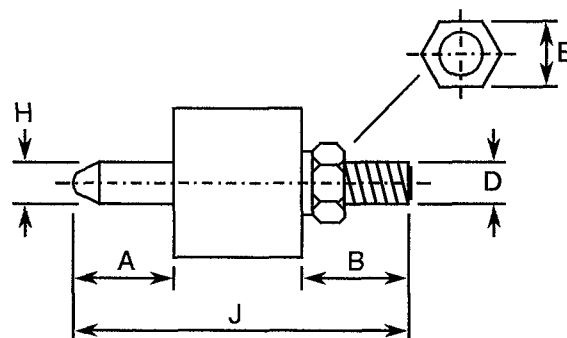


FIGURE 2 - PHYSICAL DIMENSIONS(CONTINUED)

FIGURE 2(b) - GUIDING AND LOCKING DEVICES (CONTINUED)

CODE 28

SYMBOL	MILLIMETRES	
	MIN.	MAX.
A	5.60	6.10
B	6.50	7.50
D	M 2.50	
E	3.90	4.10
H	2.45	2.55
J	20.20	21.25

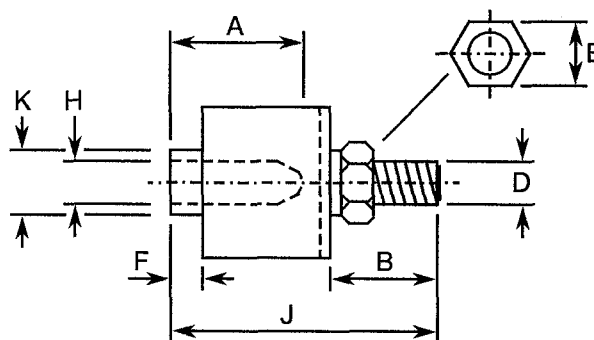


NOTES

1. Weight: 1.4g.
2. Torque: 14Ncm.

CODE 29

SYMBOL	MILLIMETRES	
	MIN.	MAX.
A	7.35	7.65
B	6.50	7.50
D	M 2.50	
E	3.90	4.10
F	1.80	2.20
H	2.75	2.85
J	16.50	17.50
K	3.55	3.90



NOTES

1. Weight: 1.1g.
2. Torque: 14Ncm.

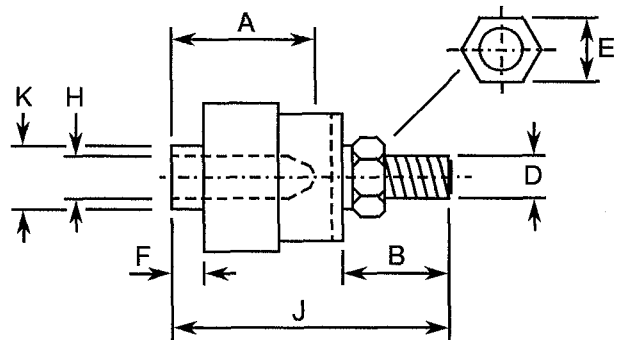


FIGURE 2 - PHYSICAL DIMENSIONS(CONTINUED)

FIGURE 2(b) - GUIDING AND LOCKING DEVICES (CONTINUED)

CODE 30

SYMBOL	MILLIMETRES	
	MIN.	MAX.
A	7.75	8.05
B	7.00	8.20
D	M 2.50	
E	3.90	4.10
F	1.80	2.20
H	2.75	2.85
J	18.45	18.75
K	3.75	3.90

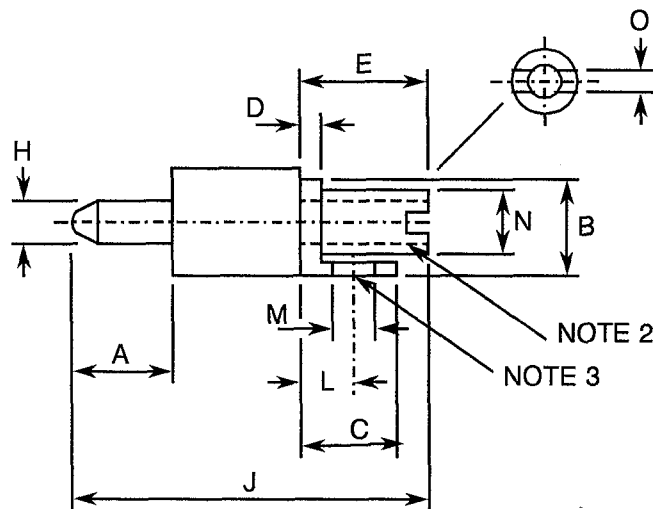


NOTES

1. Weight: 1.2g.
2. Torque: 14Ncm.

CODE 31

SYMBOL	MILLIMETRES	
	MIN.	MAX.
A	5.60	6.10
B	5.80	6.20
C	5.80	6.20
D	0.90	1.10
E	7.80	8.20
H	2.45	2.55
J	21.10	22.50
L	3.00	3.30
M	M 1.60	
N	3.40	3.60
O	0.80	1.15



NOTES

1. Weight: 1.8g.
2. Torque: 14Ncm.
3. Torque: 11Ncm.

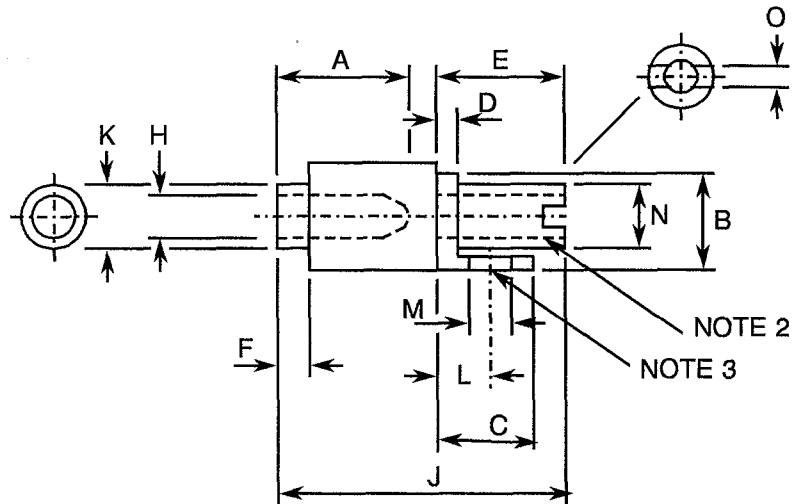


FIGURE 2 - PHYSICAL DIMENSIONS(CONTINUED)

FIGURE 2(b) - GUIDING AND LOCKING DEVICES (CONTINUED)

CODE 32

SYMBOL	MILLIMETRES	
	MIN.	MAX.
A	7.35	7.65
B	5.80	6.20
C	5.80	6.20
D	0.90	1.10
E	7.80	8.20
F	1.80	2.20
H	2.75	2.85
J	17.50	18.50
K	3.55	3.90
L	3.00	3.30
M	M 1.60	
N	3.30	3.70
O	0.80	1.15

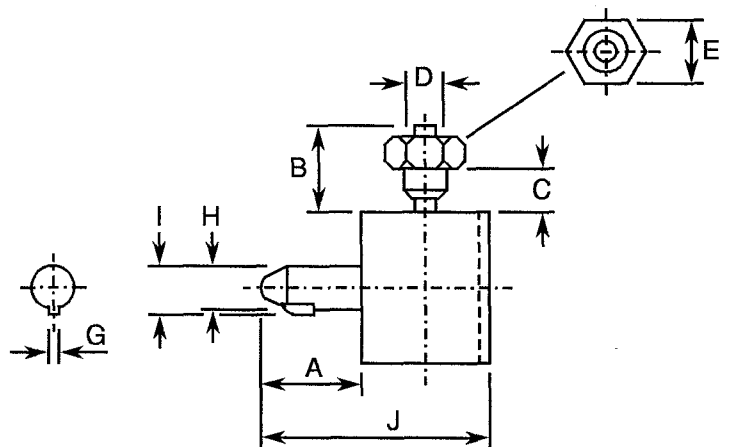


NOTES

1. Weight: 1.5g.
2. Torque: 14Ncm.
3. Torque: 11Ncm.

CODE 33

SYMBOL	MILLIMETRES	
	MIN.	MAX.
A	5.60	6.10
B	2.50	3.50
C	1.40	-
D	2.45	2.55
E	3.90	4.10
G	0.70	1.00
H	2.45	2.50
I	3.00	3.20
J	13.35	14.15



NOTES

1. Weight: 1.1g.
2. Torque: 11Ncm.

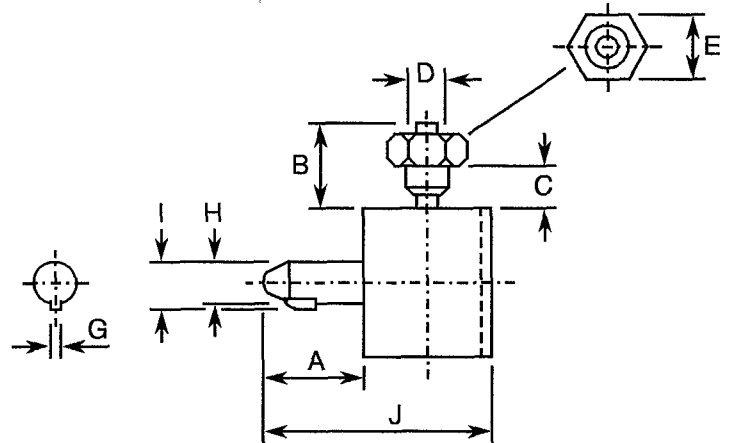


FIGURE 2 - PHYSICAL DIMENSIONS(CONTINUED)

FIGURE 2(b) - GUIDING AND LOCKING DEVICES (CONTINUED)

CODE 34

SYMBOL	MILLIMETRES	
	MIN.	MAX.
A	5.60	6.10
B	2.94	4.00
C	1.40	-
D	2.45	2.55
E	3.90	4.10
G	0.70	1.00
H	2.45	2.50
I	3.00	3.20
J	13.35	14.15

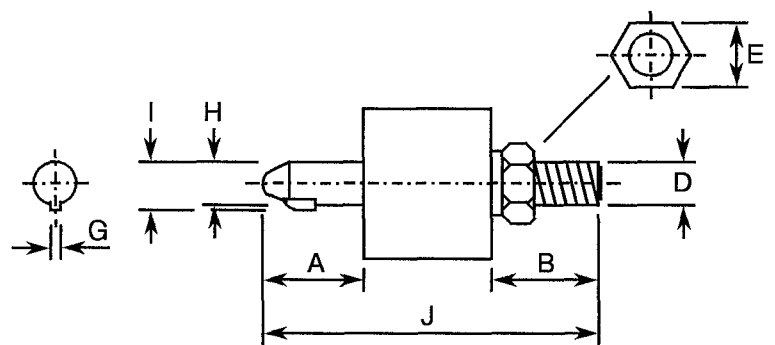


NOTES

1. Weight: 1.1g.
2. Torque: 11Ncm.

CODE 35

SYMBOL	MILLIMETRES	
	MIN.	MAX.
A	5.60	6.10
B	6.50	7.50
D	M 2.50	
E	3.90	4.10
G	0.70	1.00
H	2.45	2.50
I	3.00	3.20
J	20.20	21.20



NOTES

1. Weight: 1.5g.
2. Torque: 14Ncm.

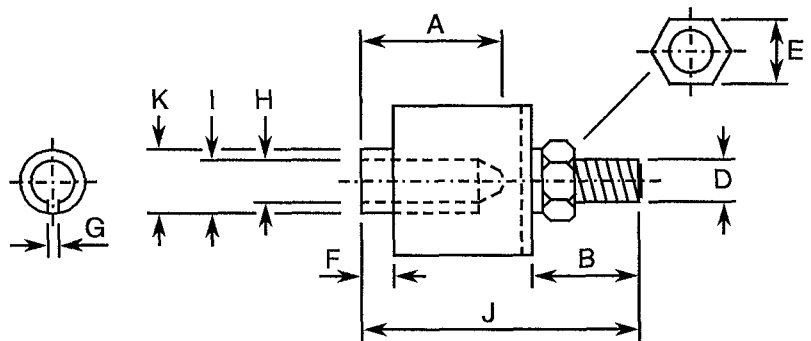


FIGURE 2 - PHYSICAL DIMENSIONS(CONTINUED)

FIGURE 2(b) - GUIDING AND LOCKING DEVICES (CONTINUED)

CODE 36

SYMBOL	MILLIMETRES	
	MIN.	MAX.
A	7.35	7.65
B	6.50	7.50
D	M 2.50	
E	3.90	4.10
F	1.80	2.20
G	1.10	1.30
H	2.75	2.85
I	3.05	3.35
J	16.50	17.50
K	3.55	3.90

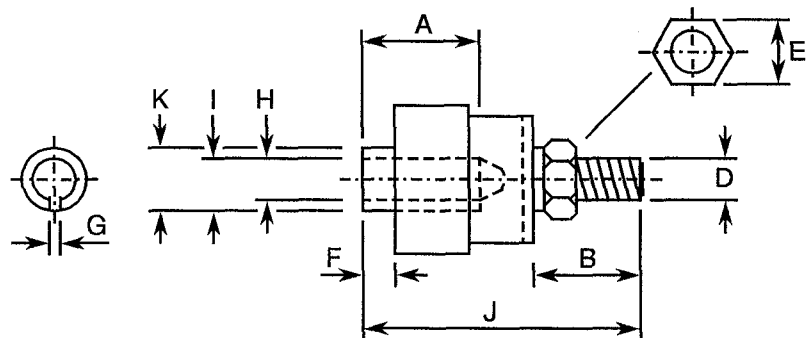


NOTES

1. Weight: 1.0g.
2. Torque: 14Ncm.

CODE 37

SYMBOL	MILLIMETRES	
	MIN.	MAX.
A	7.75	8.05
B	7.00	8.20
D	M 2.50	
E	3.90	4.10
F	1.50	2.10
G	1.10	1.30
H	2.75	2.85
I	3.20	3.45
J	18.45	18.75
K	3.75	3.90



NOTES

1. Weight: 1.9g.
2. Torque: 14Ncm.

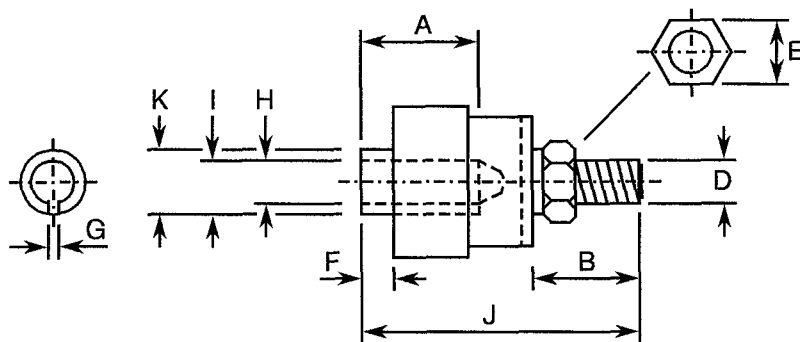


FIGURE 2 - PHYSICAL DIMENSIONS(CONTINUED)

FIGURE 2(b) - GUIDING AND LOCKING DEVICES (CONTINUED)

CODE 38

SYMBOL	MILLIMETRES	
	MIN.	MAX.
A	7.75	8.05
B	7.00	8.20
D	M 2.50	
E	3.90	4.10
F	1.50	2.10
G	1.10	1.30
H	2.75	2.85
I	3.20	3.45
J	18.45	18.75
K	3.75	3.90

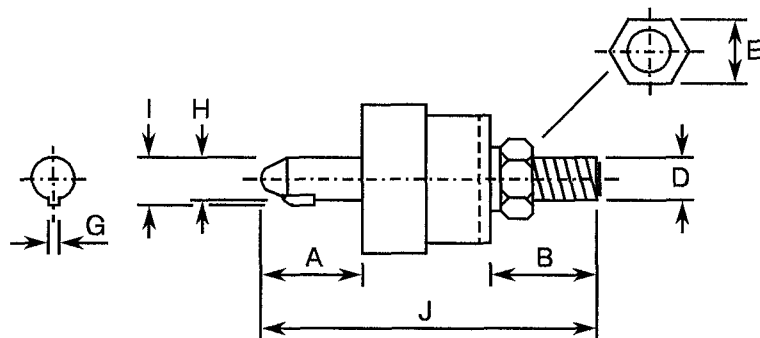


NOTES

1. Weight: 1.1g.
2. Torque: 14Ncm.

CODE 39

SYMBOL	MILLIMETRES	
	MIN.	MAX.
A	5.30	6.10
B	7.00	8.20
D	M 2.50	
E	3.90	4.10
G	0.70	1.00
H	2.45	2.50
I	3.00	3.20
J	22.05	22.35



NOTES

1. Weight: 2.3g.
2. Torque: 14Ncm.

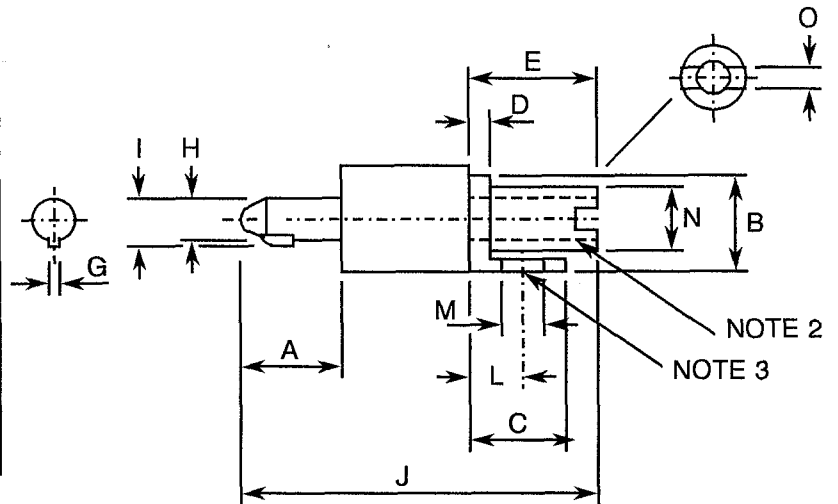


FIGURE 2 - PHYSICAL DIMENSIONS(CONTINUED)

FIGURE 2(b) - GUIDING AND LOCKING DEVICES (CONTINUED)

CODE 40

SYMBOL	MILLIMETRES	
	MIN.	MAX.
A	5.60	6.10
B	5.80	6.20
C	5.80	6.20
D	0.90	1.10
E	6.90	8.20
G	0.70	1.00
H	2.45	2.50
I	3.00	3.20
J	20.55	22.50
L	3.00	3.30
M	M 1.60	
N	3.40	3.60
O	0.80	1.15

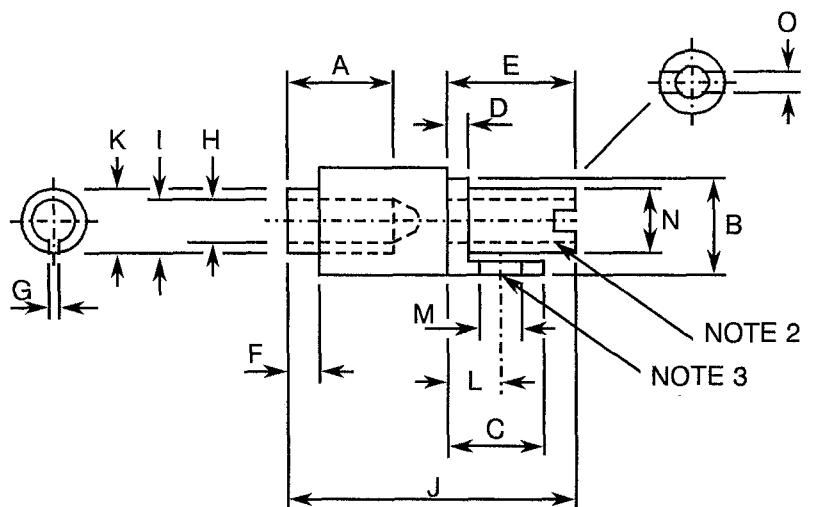


NOTES

1. Weight: 1.9g.
2. Torque: 14Ncm.
3. Torque: 11Ncm.

CODE 41

SYMBOL	MILLIMETRES	
	MIN.	MAX.
A	7.35	7.65
B	5.80	6.20
C	5.80	6.20
D	0.90	1.10
E	7.80	8.20
F	1.80	2.20
G	1.10	1.30
H	2.75	2.85
I	3.05	3.35
J	16.55	18.50
K	3.55	3.90
L	3.00	3.30
M	M 1.60	
N	3.30	3.70
O	0.80	1.15



NOTES

1. Weight: 1.5g.
2. Torque: 14Ncm.
3. Torque: 11Ncm.

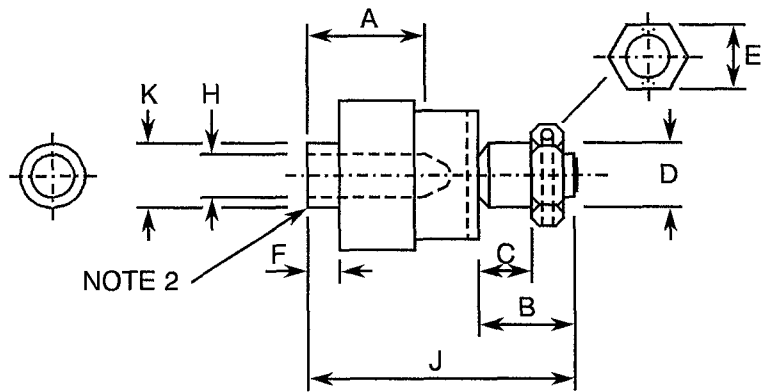


FIGURE 2 - PHYSICAL DIMENSIONS(CONTINUED)

FIGURE 2(b) - GUIDING AND LOCKING DEVICES (CONTINUED)

CODE 42

SYMBOL	MILLIMETRES	
	MIN.	MAX.
A	6.50	7.50
B	6.00	7.00
C	3.50	-
D	3.80	4.00
E	5.40	5.60
F	1.60	2.90
H	M 2.50	
J	17.45	17.75
K	3.75	3.90

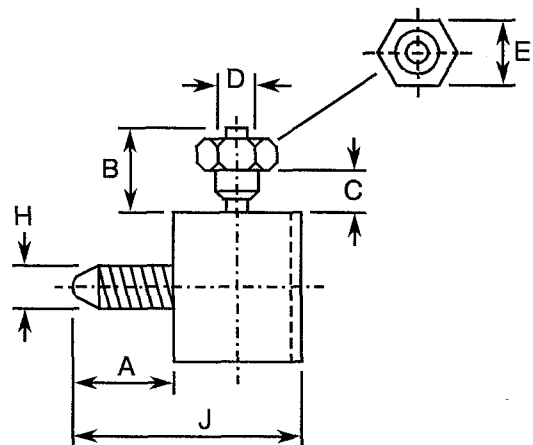


NOTES

1. Weight: 1.7g.
2. Torque: 14Ncm.

CODE 43

SYMBOL	MILLIMETRES	
	MIN.	MAX.
A	5.00	5.65
B	2.94	4.00
C	1.40	-
D	2.45	2.55
E	3.90	4.10
H	M 2.50	
J	12.75	13.65



NOTES

1. Weight: 1.1g.
2. Torque: 11Ncm.

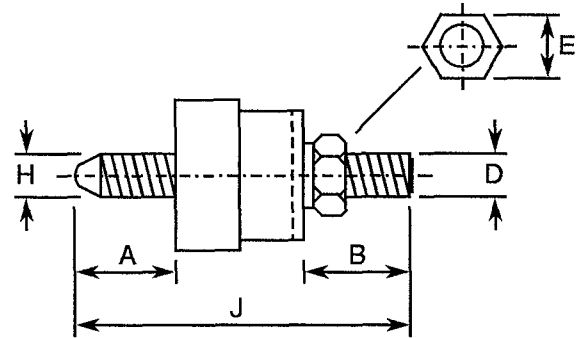


FIGURE 2 - PHYSICAL DIMENSIONS(CONTINUED)

FIGURE 2(b) - GUIDING AND LOCKING DEVICES (CONTINUED)

CODE 44

SYMBOL	MILLIMETRES	
	MIN.	MAX.
A	4.70	5.50
B	7.00	8.20
D	M 2.50	
E	3.90	4.10
H	M 2.50	
J	21.20	22.20

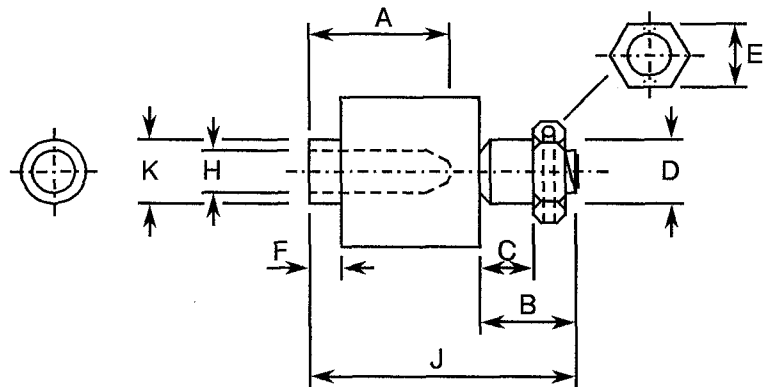


NOTES

1. Weight: 2.2g.
2. Torque: 14Ncm.

CODE 45

SYMBOL	MILLIMETRES	
	MIN.	MAX.
A	6.50	7.50
B	6.40	7.00
C	3.50	-
D	3.80	4.00
E	5.40	5.60
F	1.90	2.90
H	M 2.50	
J	16.35	16.65
K	3.75	3.90



NOTES

1. Weight: 1.7g.
2. Torque: 14Ncm.



FIGURE 2 - PHYSICAL DIMENSIONS(CONTINUED)

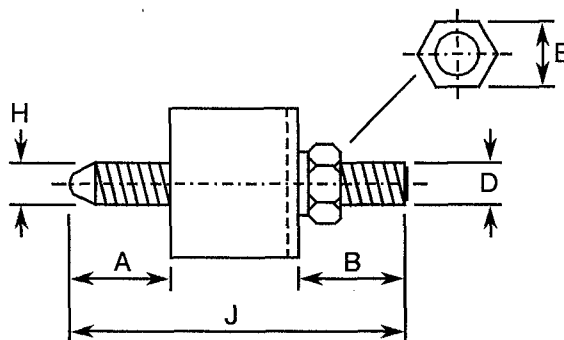
FIGURE 2(b) - GUIDING AND LOCKING DEVICES (CONTINUED)

CODE 46

SYMBOL	MILLIMETRES	
	MIN.	MAX.
A	5.00	5.65
B	6.75	9.00
D	M 2.50	
E	3.90	4.10
H	M 2.50	
J	19.95	21.85

NOTES

1. Weight: 1.3g.
2. Torque: 14Ncm.



CODE 47

SYMBOL	MILLIMETRES	
	MIN.	MAX.
F	5.70	6.50
G	0.70	1.00
H	2.45	2.50
I	3.00	3.20
J	22.20	22.50
L	-	13.00
M	8.00	9.00
N	5.40	5.60
O	0.40	0.60
P	M 1.60	
Q	2.90	3.10
R	11.40	12.00
S	1.25	1.85

NOTES

1. Weight: 2.0g.
2. Torque: 4.6Ncm.
3. Torque: 14Ncm.
4. M = Locked, L = Unlocked.

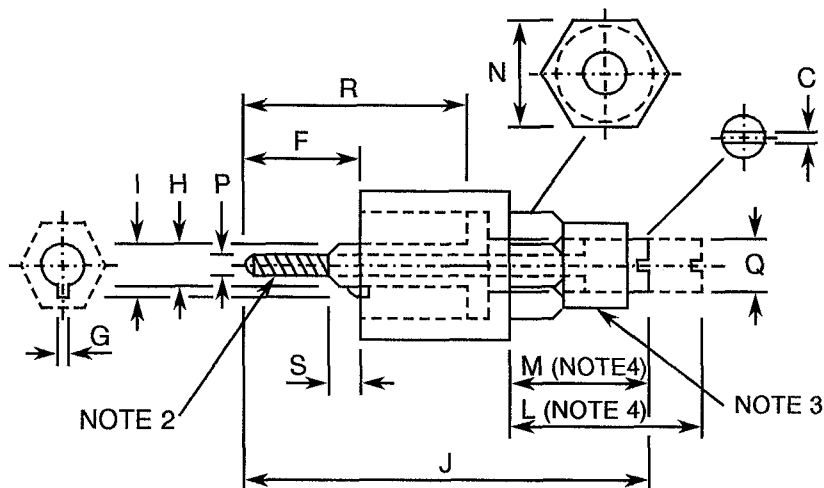


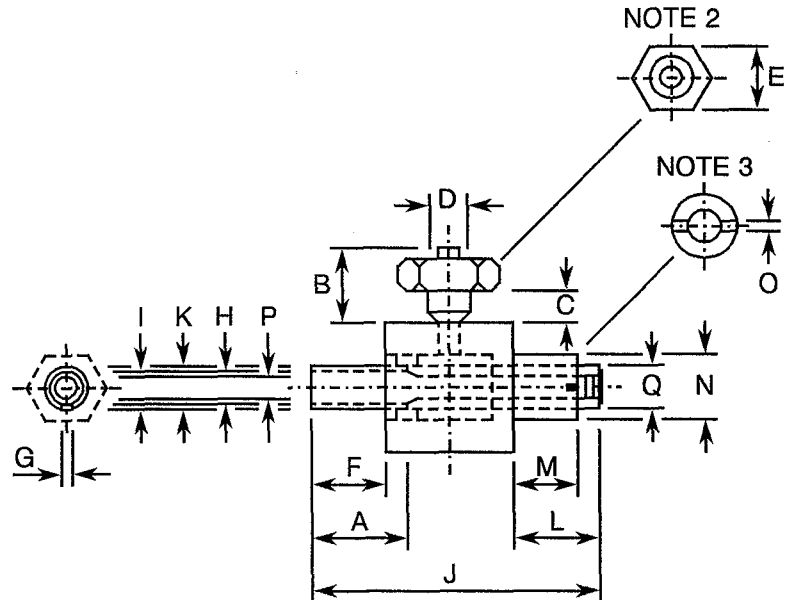


FIGURE 2 - PHYSICAL DIMENSIONS(CONTINUED)

FIGURE 2(b) - GUIDING AND LOCKING DEVICES (CONTINUED)

CODE 48

SYMBOL	MILLIMETRES	
	MIN.	MAX.
A	6.80	7.20
B	3.10	3.70
C	1.40	-
D	2.42	2.58
E	3.90	4.10
F	4.80	5.40
G	1.10	1.30
H	2.77	2.85
I	3.05	3.30
J	16.55	16.85
K	3.50	3.90
L	3.20	4.00
M	2.90	3.10
N	4.85	5.15
O	0.85	1.20
P	M 1.60	
Q	M 3.0	

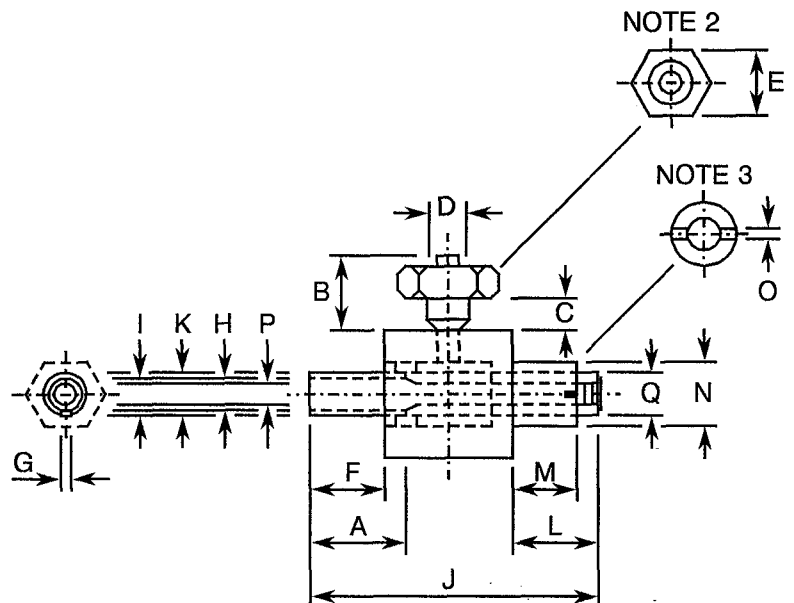


NOTES

1. Weight: 1.4g.
2. Torque: 8.0Ncm.
3. Torque: 14Ncm.

CODE 49

SYMBOL	MILLIMETRES	
	MIN.	MAX.
A	6.80	7.20
B	3.10	3.70
C	1.40	-
D	2.42	2.58
E	3.90	4.10
F	4.80	5.40
G	1.10	1.30
H	2.77	2.85
I	3.05	3.30
J	16.55	16.85
K	3.50	3.90
L	3.20	4.00
M	2.90	3.10
N	4.85	5.15
O	0.85	1.20
P	M 1.60	
Q	M 3.0	



NOTES

1. Weight: 1.5g.
2. Torque: 8.0Ncm.
3. Torque: 14Ncm.

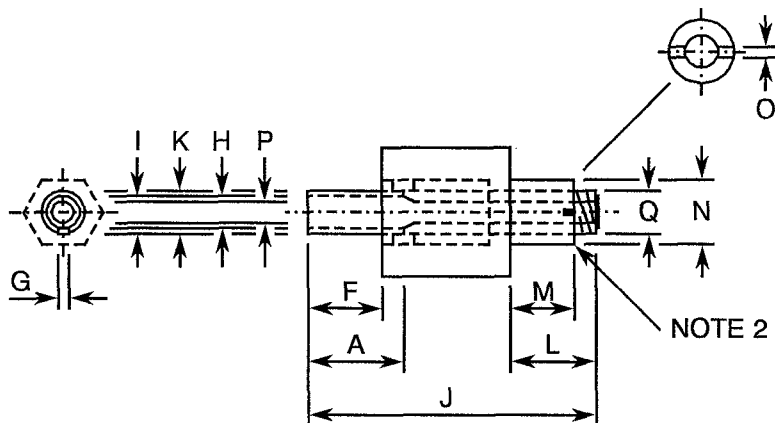


FIGURE 2 - PHYSICAL DIMENSIONS(CONTINUED)

FIGURE 2(b) - GUIDING AND LOCKING DEVICES (CONTINUED)

CODE 50

SYMBOL	MILLIMETRES	
	MIN.	MAX.
A	6.80	7.20
F	4.80	5.40
G	1.10	1.30
H	2.77	2.85
I	3.05	3.30
J	16.55	16.85
K	3.50	3.90
L	3.20	4.00
M	2.90	3.10
N	4.85	5.15
O	0.85	1.20
P	M 1.60	
Q	M 3.0	

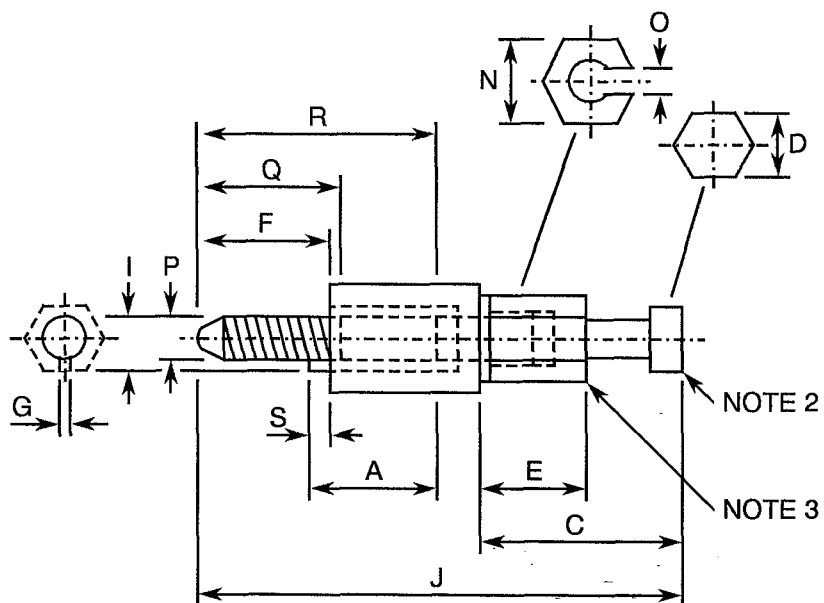


NOTES

1. Weight: 1.2g.
2. Torque: 14Ncm.

CODE 51

SYMBOL	MILLIMETRES	
	MIN.	MAX.
A	6.30	6.70
C	11.00	12.80
D	3.90	4.10
E	6.00	6.30
F	3.80	6.20
G	1.15	1.25
I	3.10	3.25
J	25.20	25.80
N	4.90	5.10
O	2.07	2.15
P	M 2.50	
Q	7.00	8.00
R	9.50	11.50
S	0.80	1.40



NOTES

1. Weight: 2.0g.
2. Torque: 11Ncm.
3. Torque: 15.5Ncm.

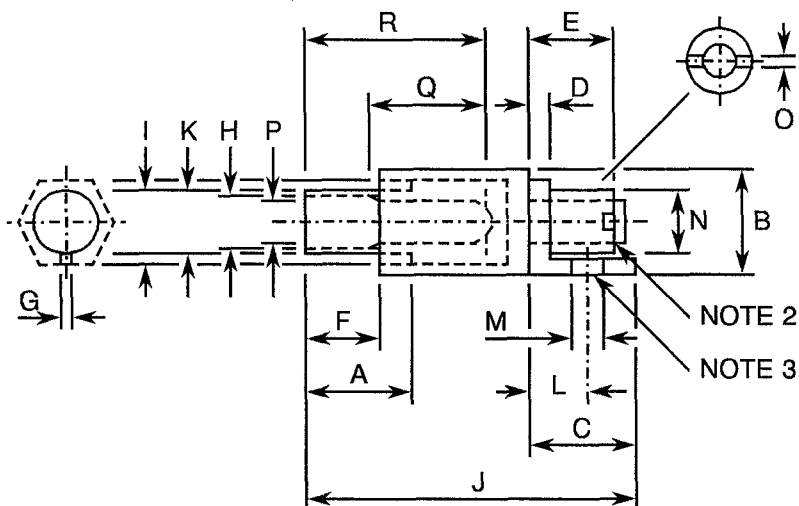


FIGURE 2 - PHYSICAL DIMENSIONS(CONTINUED)

FIGURE 2(b) - GUIDING AND LOCKING DEVICES (CONTINUED)

CODE 52

SYMBOL	MILLIMETRES	
	MIN.	MAX.
A	7.30	7.70
B	5.80	6.20
C	5.80	6.20
D	0.90	1.10
E	3.50	4.50
F	4.50	5.00
G	1.30	1.50
H	2.70	2.80
I	3.15	3.30
J	18.05	19.35
K	3.75	3.85
L	3.00	3.30
M	M 1.60	
N	3.50	3.75
O	0.55	0.95
P	M 2.50	
Q	6.00	6.50

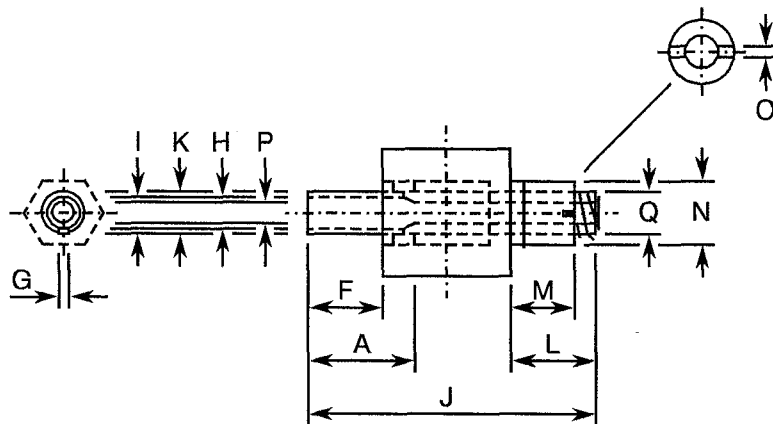


NOTES

1. Weight: 1.4g.
2. Torque: 14Ncm.
3. Torque: 11Ncm.

CODE 53

SYMBOL	MILLIMETRES	
	MIN.	MAX.
A	6.80	7.20
F	4.80	5.40
G	1.10	1.30
H	2.77	2.85
I	3.05	3.30
J	19.55	19.85
K	3.50	3.70
L	6.20	7.00
M	3.35	3.70
N	4.85	5.15
O	0.80	1.15
P	M 1.60	
Q	M 3.0	



NOTES

1. Weight: 1.2g.
2. Torque: 14Ncm.

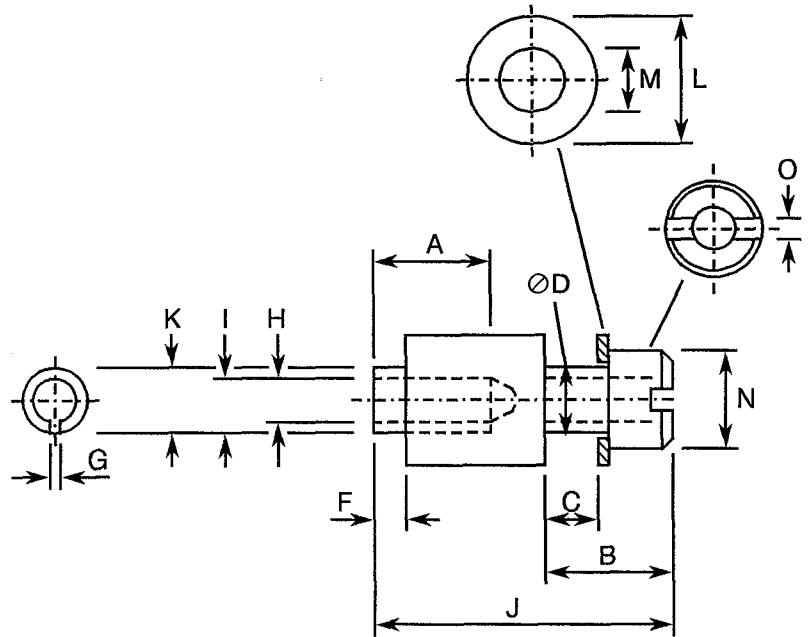


FIGURE 2 - PHYSICAL DIMENSIONS(CONTINUED)

FIGURE 2(b) - GUIDING AND LOCKING DEVICES (CONTINUED)

CODE 54

SYMBOL	MILLIMETRES	
	MIN.	MAX.
A	7.35	7.65
B	6.50	7.50
C	2.10	2.50
D	3.90	4.10
F	1.80	2.20
G	1.10	1.30
H	2.75	2.85
I	3.05	3.35
J	16.50	17.50
K	3.55	3.90
L	7.30	7.70
M	4.05	4.15
N	5.80	6.35
O	0.90	1.10

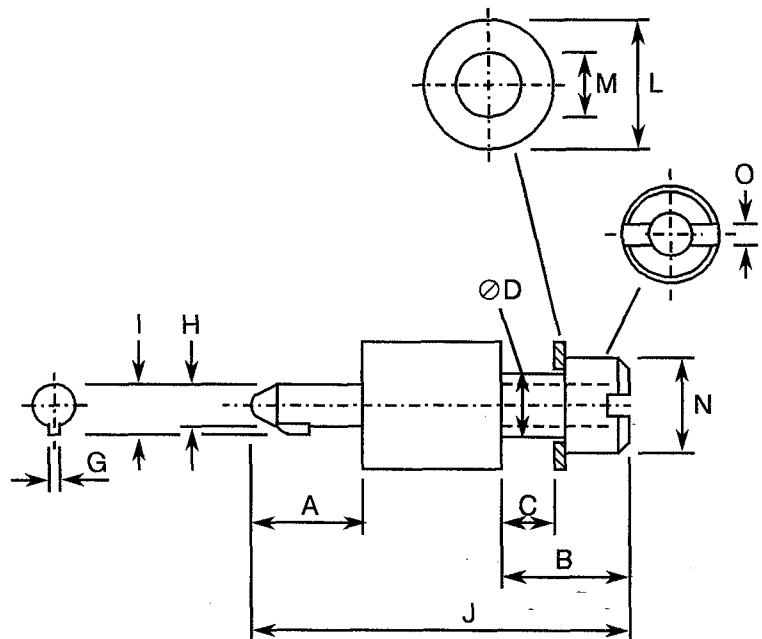


NOTES

1. Weight: 1.8g.
2. Torque: 14Ncm.

CODE 55

SYMBOL	MILLIMETRES	
	MIN.	MAX.
A	5.60	6.10
B	6.50	7.50
C	2.10	2.50
D	3.90	4.10
G	0.70	1.00
H	2.45	2.50
I	3.00	3.20
J	20.20	21.25
L	7.30	7.70
M	4.05	4.15
N	5.80	6.35
O	0.90	1.10



NOTES

1. Weight: 2.2g.
2. Torque: 14Ncm.



FIGURE 2 - PHYSICAL DIMENSIONS(CONTINUED)

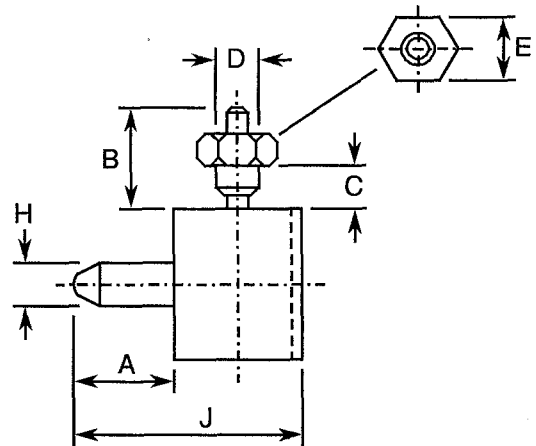
FIGURE 2(b) - GUIDING AND LOCKING DEVICES (CONTINUED)

CODE 71

SYMBOL	MILLIMETRES	
	MIN.	MAX.
A	5.60	6.10
B	4.20	5.30
C	1.40	-
D	2.45	2.55
E	3.90	4.10
H	2.45	2.55
J	13.35	14.15

NOTES

1. Weight: 1.2g.
2. Torque: 11Ncm.



CODE 72

SYMBOL	MILLIMETRES	
	MIN.	MAX.
A	5.60	6.10
B	4.20	5.30
C	1.40	-
D	2.45	2.55
E	3.90	4.10
G	0.70	1.00
H	2.45	2.50
I	3.00	3.20
J	13.35	14.15

NOTES

1. Weight: 1.2g.
2. Torque: 11Ncm.

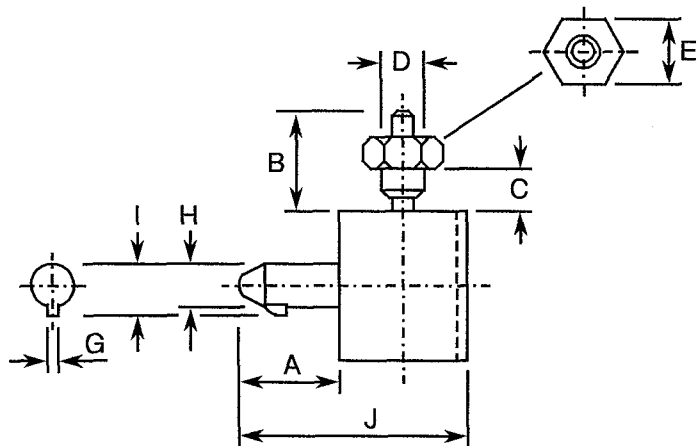




FIGURE 2 - PHYSICAL DIMENSIONS(CONTINUED)

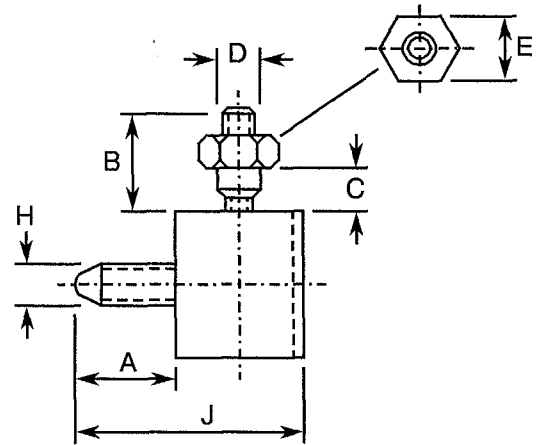
FIGURE 2(b) - GUIDING AND LOCKING DEVICES (CONTINUED)

CODE 73

SYMBOL	MILLIMETRES	
	MIN.	MAX.
A	5.00	5.65
B	4.20	5.30
C	1.40	-
D	2.45	2.55
E	3.90	4.10
H	M 2.50	
I	-	-
J	12.75	13.65

NOTES

1. Weight: 1.1g.
2. Torque: 11Ncm.



CODE 74

SYMBOL	MILLIMETRES	
	MIN.	MAX.
A	7.35	7.65
B	7.80	8.20
C	7.80	8.20
D	1.40	1.60
E	8.30	8.70
F	1.80	2.20
G	1.10	1.30
H	2.75	2.85
I	3.05	3.35
J	18.00	19.00
K	3.55	3.90
L	4.75	5.05
M	M 1.60	
N	3.30	3.70
O	0.80	1.15

NOTES

1. Weight: 1.5g.
2. Torque: 14Ncm.
3. Torque: 11Ncm.

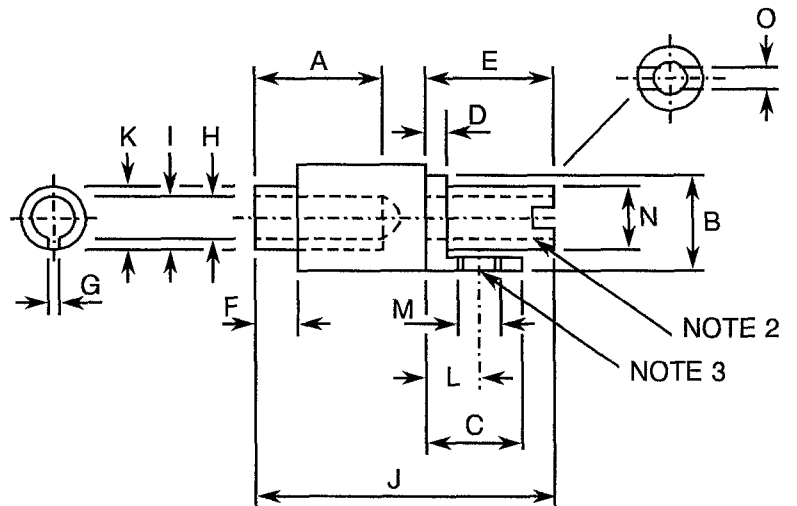


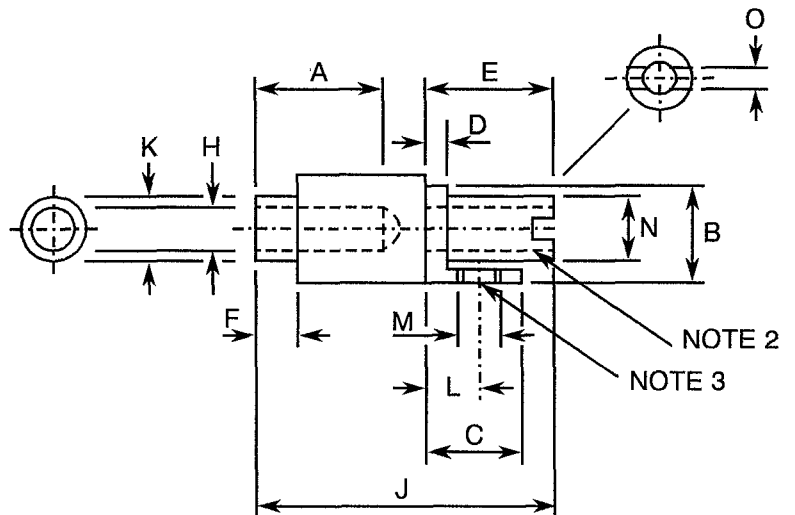


FIGURE 2 - PHYSICAL DIMENSIONS(CONTINUED)

FIGURE 2(b) - GUIDING AND LOCKING DEVICES (CONTINUED)

CODE 75

SYMBOL	MILLIMETRES	
	MIN.	MAX.
A	7.35	7.65
B	7.80	8.20
C	7.80	8.20
D	1.40	1.60
E	8.30	8.70
F	1.80	2.20
H	2.75	2.85
J	18.00	19.00
K	3.55	3.90
L	4.75	5.05
M	M 1.60	
N	3.30	3.70
O	0.80	1.15

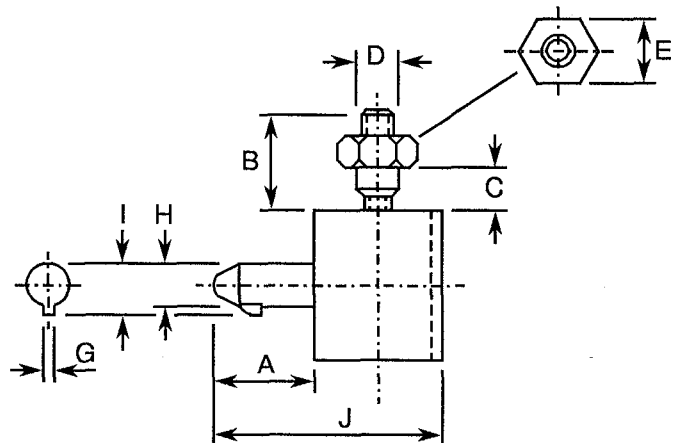


NOTES

1. Weight: 1.5g.
2. Torque: 14Ncm.
3. Torque: 11Ncm.

CODE 76

SYMBOL	MILLIMETRES	
	MIN.	MAX.
A	5.60	6.10
B	4.88	6.00
C	1.40	-
D	2.45	2.55
E	3.90	4.10
G	0.70	1.00
H	2.45	2.50
I	3.00	3.20
J	13.35	14.15



NOTES

1. Weight: 1.1g.
2. Torque: 11Ncm.



FIGURE 2 - PHYSICAL DIMENSIONS(CONTINUED)

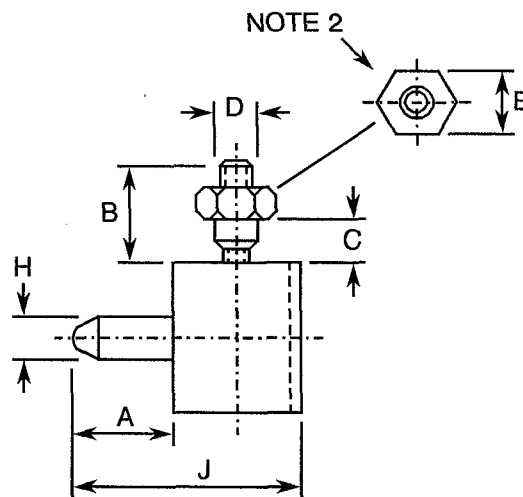
FIGURE 2(b) - GUIDING AND LOCKING DEVICES (CONTINUED)

CODE 77

SYMBOL	MILLIMETRES	
	MIN.	MAX.
A	5.60	6.10
B	4.88	6.00
C	1.40	-
D	2.45	2.55
E	3.90	4.10
H	2.45	2.55
J	13.35	14.15

NOTES

1. Weight: 1.2g.
2. Torque: 11Ncm.



CODE 78

SYMBOL	MILLIMETRES	
	MIN.	MAX.
A	6.50	7.50
B	4.50	7.00
C	3.50	-
D	3.80	4.00
E	5.40	5.60
F	1.15	2.90
H	M 2.50	
J	13.45	16.65
K	3.75	3.90

NOTES

1. Weight: 1.7g.
2. Torque: 14Ncm.

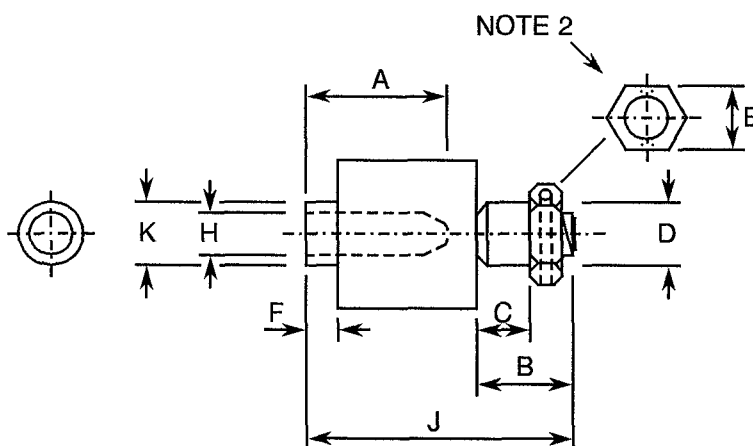


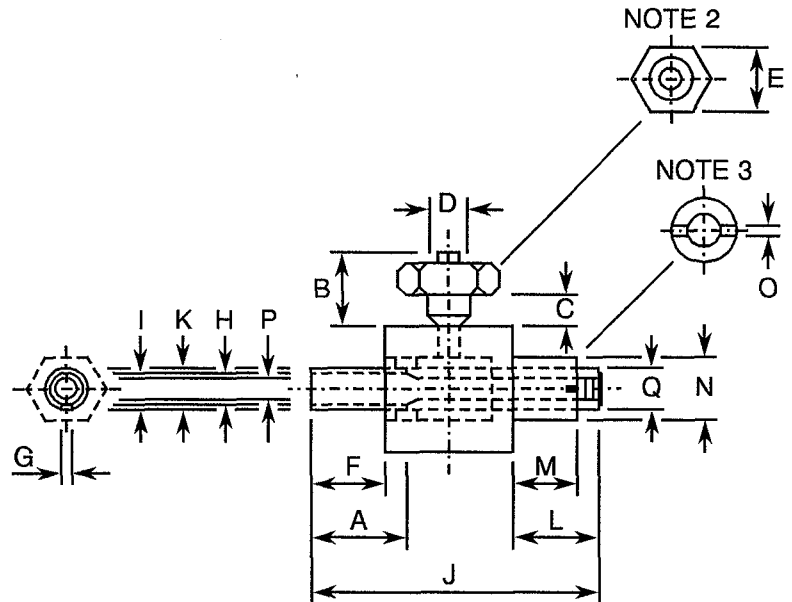


FIGURE 2 - PHYSICAL DIMENSIONS(CONTINUED)

FIGURE 2(b) - GUIDING AND LOCKING DEVICES (CONTINUED)

CODE 79

SYMBOL	MILLIMETRES	
	MIN.	MAX.
A	6.80	7.20
B	4.80	5.40
C	1.40	-
D	2.42	2.58
E	3.90	4.10
F	4.80	5.40
G	1.10	1.30
H	2.77	2.85
I	3.05	3.30
J	16.55	16.85
K	3.50	3.90
L	3.20	4.00
M	2.90	3.10
N	4.85	5.15
O	0.85	1.20
P	M 1.60	
Q	M 3.0	

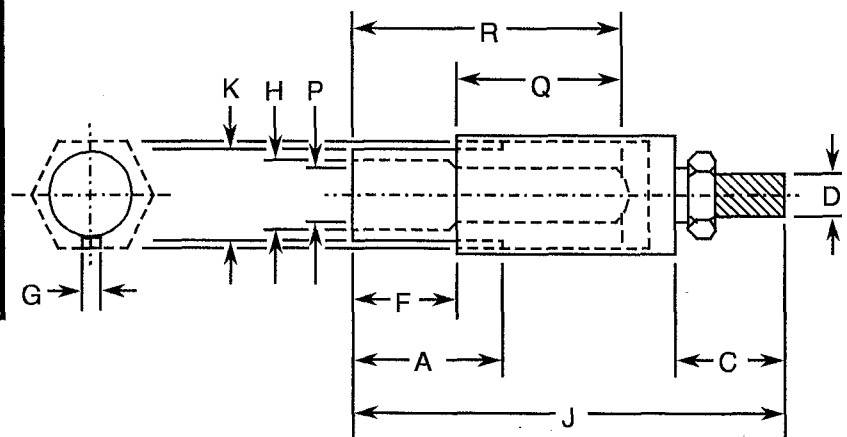


NOTES

1. Weight: 1.4g.
2. Torque: 8.0Ncm.
3. Torque: 14Ncm.

CODE 80

SYMBOL	MILLIMETRES	
	MIN.	MAX.
A	7.30	7.70
C	3.50	4.50
D	M 2.50	
F	4.50	5.00
G	1.30	1.50
H	2.70	2.80
J	16.30	17.10
K	3.75	3.85
P	M 2.50	



NOTES

1. Weight: 2g.
2. Torque: 14Ncm.

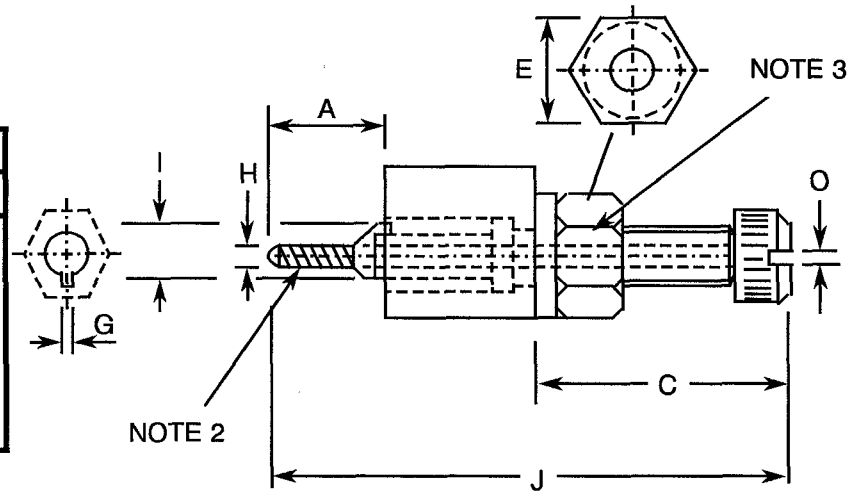


FIGURE 2 - PHYSICAL DIMENSIONS(CONTINUED)

FIGURE 2(b) - GUIDING AND LOCKING DEVICES (CONTINUED)

CODE 81

SYMBOL	MILLIMETRES	
	MIN.	MAX.
A	6.20	7.00
C	9.20	10
E	5.40	5.60
G	0.70	1.00
H	M 1.60	
I	3.00	3.20
J	24	24.50
O	0.30	0.60



NOTES

1. Weight: 1.70g.
2. Torque: 4.6N.cm.
3. Torque: 14N.cm.

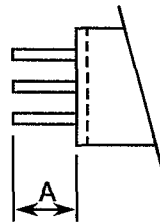


FIGURE 2 - PHYSICAL DIMENSIONS(CONTINUED)

FIGURE 2(c) - CONTACT MOUNTING CONFIGURATIONS

VIEW OF REAR PART OF CONNECTOR

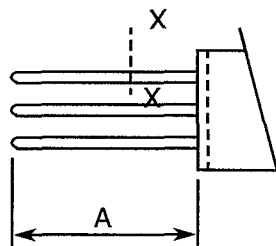
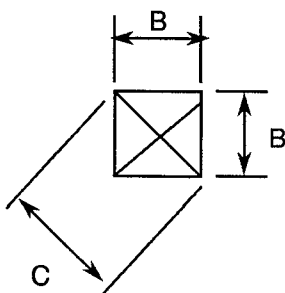
CRIMP CONTACTS - CODE NUMBERS 04 AND 15 (2 OR 3 ROWS)



SYMBOL	MILLIMETRES	
	MIN.	MAX.
A	4.15	4.90

WIRE-WRAP CONTACTS (2 OR 3 ROWS)

CROSS SECTION XX



SYMBOL	MILLIMETRES	
	MIN.	MAX.
A	13.50	15.00
B	0.60 nominal	
C	0.76	0.864



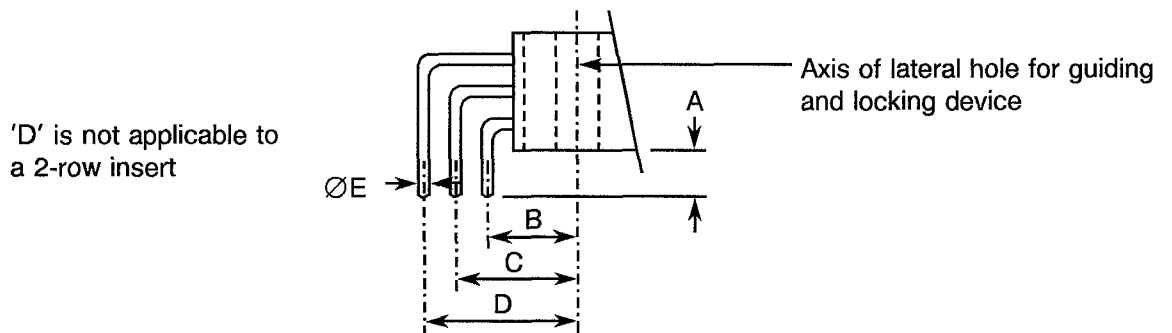
FIGURE 2 - PHYSICAL DIMENSIONS(CONTINUED)

FIGURE 2(c) - CONTACT MOUNTING CONFIGURATIONS

VIEW OF REAR PART OF CONNECTOR

SOLDER CONTACTS

1. Insert with lateral hole for guiding and locking devices with solder right-angle contacts.

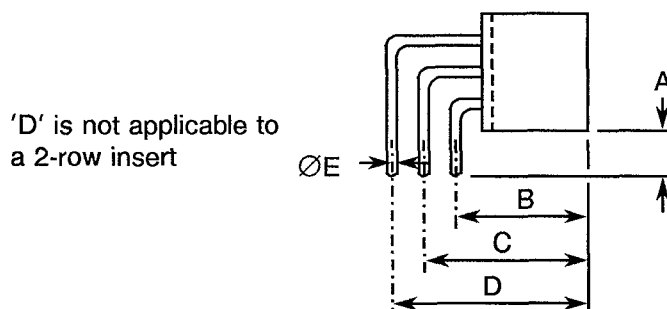


Inserts with contact code numbers 01, 02, 03, 12, 13 and 14:

SYMBOL	MILLIMETRES	
	MIN.	MAX.
A	2.50	3.50
B	4.88	5.28
C	7.32	7.92
D	9.76	10.56
ØE	0.56	0.64

For inserts with contact code numbers 64, 65, 66, 68, 69 and 70, dimension 'A' shall be: 3.50 to 4.50 mm.

2. Insert without lateral hole for guiding and locking devices with solder right-angle contacts.



Inserts with contact code numbers 01, 02, 03, 12, 13 and 14:

SYMBOL	MILLIMETRES	
	MIN.	MAX.
A	2.50	3.70
B	8.78	9.18
C	11.22	11.82
D	13.66	14.46
ØE	0.56	0.64

For inserts with contact code numbers 64, 65, 66, 68, 69 and 70, dimension 'A' shall be: 3.50 to 4.70 mm.



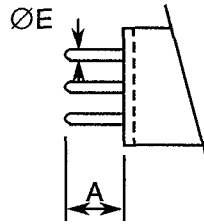
FIGURE 2 - PHYSICAL DIMENSIONS(CONTINUED)

FIGURE 2(c) - CONTACT MOUNTING CONFIGURATIONS

VIEW OF REAR PART OF CONNECTOR

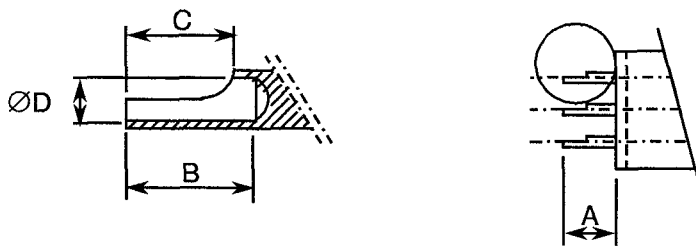
SOLDER AND SAVER CONTACTS

3. Inserts with solder straight-through contacts (2 or 3 rows).



CONTACT CODE Nos.	SYMBOL	MILLIMETRES	
		MIN.	MAX.
07	A	5.30	6.15
06 and 17	A	4.50	5.35
18	A	4.25	5.10
67	A	4.15	5.00
06, 07, 17, 18	ØE	0.56	0.64
67	ØE	0.58	0.62

4. Inserts with bucket contacts (2 or 3 rows).



CONTACT CODE Nos.	SYMBOL	MILLIMETRES	
		MIN.	MAX.
08 and 19	A	4.75	5.65
08 and 19	B	2.80	-
08 and 19	C	2.30	2.70
08 and 19	ØD	0.98	1.04



4. REQUIREMENTS

4.1 GENERAL

The complete requirements for procurement of the connectors specified herein are stated in this specification and ESA/SCC Generic Specification No. 3401. Deviations from the Generic Specification, applicable to this specification only, are listed in Para. 4.2.

Deviations from the applicable Generic Specification and this Detail Specification, formally agreed with specific Manufacturers on the basis that the alternative requirements are equivalent to the ESA/SCC requirements and do not affect the components' reliability, are listed in the appendices attached to this specification.

4.2 DEVIATIONS FROM GENERIC SPECIFICATION

4.2.1 Deviations from Special In-process Controls

None.

4.2.2 Deviations from Final Production Tests (Chart II)

- (a) Para. 9.1.1.4, Mated Shell Conductivity: Not applicable.
- (b) Para. 9.4, Contact Capability: Sampling in accordance with Para. 9.6 of ESA/SCC No. 3401.
- (c) Para. 9.5, Magnetism Level: Not applicable.
- (d) Para. 9.9, Seal Test: Not applicable.
- (e) Para. 9.3, Contact Retainer Test: Not applicable.

Instead, the compression (25N) test of the Contact Retention (In Insert) as specified in Para. 4.3.4 of this specification shall be performed on a sample of contacts in accordance with Para. 9.6 of ESA/SCC 3401.

4.2.3 Deviations from Burn-in and Electrical Measurements (Chart III)

Not applicable.

4.2.4 Deviations from Qualification Tests (Chart IV)

- (a) Para. 9.1.1.4, Mated Shell Conductivity: Not applicable.
- (b) Para. 9.9, Seal Test: Not applicable.
- (c) Para. 9.22, Corrosion: Not applicable.
- (d) Para. 9.23, Insert Retention (in shell): Not applicable.
- (e) Para. 9.24, Jackscrew Retention: Not applicable.

4.2.5 Deviations from Lot Acceptance Tests (Chart V)

- (a) Para. 9.1.1.4, Mated Shell Conductivity: Not applicable.
- (b) Para. 9.9, Seal Test: Not applicable.
- (c) Para. 9.22, Corrosion: Not applicable.

4.3 MECHANICAL REQUIREMENTS

4.3.1 Dimension Check

The dimensions of the connectors specified herein shall be verified in accordance with requirements set out in Para. 9.6 of ESA/SCC Generic Specification No. 3401 and shall conform to those shown in Figure 2 of this specification. For procurement, dimensions to be checked are limited to:-



Figure 2(a) - Between centres of guiding or locking device. (Dimension A).

- Dimension D (where applicable).

Figure 2(b) - Protrusion of locking/guiding devices.

- Overall dimensions of locking/guiding devices.

Figure 2(c) - All dimensions.

4.3.2 Weight

The maximum weight of the connectors, without contacts, and of the accessories specified herein shall be as specified in Figure 2.

4.3.3 Contact Capability

See ESA/SCC Detail Specification No. 3401/017.

4.3.4 Contact Retention (In Insert)

See ESA/SCC Detail Specification No. 3401/017.

4.3.5 Mating and Unmating Forces

The forces applied for mating and unmating of the connectors shall not be more than 0.7N per contact.

4.3.6 Insert Retention (In Shell)

Not applicable.

4.3.7 Jackscrew Retention

Not applicable.

4.3.8 Contact Insertion and Withdrawal Forces

See ESA/SCC Detail Specification No. 3401/017.

4.3.9 Engagement and Separation Forces

See ESA/SCC Detail Specification No. 3401/017.

4.3.10 Oversize Pin Exclusion

See ESA/SCC Detail Specification No. 3401/017.

4.3.11 Probe Damage

See ESA/SCC Detail Specification No. 3401/017.

4.3.12 Solderability

Size B soldering iron shall be used. See also ESA/SCC Detail Specification No. 3401/017.

4.4 MATERIALS AND FINISHES

The materials and finishes shall be as specified herein. Where a definite material is not specified, a material which will enable the connectors specified herein to meet the performance requirements of this specification shall be used. Acceptance or approval of any constituent material does not guarantee acceptance of the finished product.



4.4.1 Shells

Not applicable.

4.4.2 Inserts

The inserts shall be made of glass fibre-filled diallylphthalate resin.

4.4.3 Contacts

As specified in ESA/SCC Detail Specification No. 3401/017.

4.4.4 Contact Retaining Clip

See ESA/SCC Detail Specification No. 3401/017.

4.4.5 Guiding and Locking Devices

Guiding and locking devices shall be made of brass (nickel-plated), stainless steel or arcap alloy.

4.4.6 Magnetism Level

Not applicable.

4.5 MARKING

4.5.1 General

The marking of all components delivered to this specification shall be in accordance with the requirements of ESA/SCC Basic Specification No. 21700 and the following paragraphs. When the component is too small to accommodate all of the marking specified, as much as space permits shall be marked and the marking information, in full, shall accompany the component in its primary package.

The information to be marked and the order of precedence, shall be as follows:-

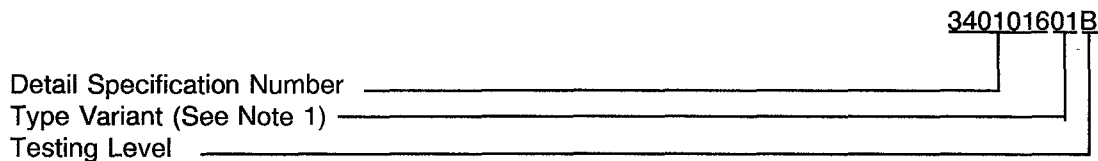
- (a) Contact Identification.
- (b) The SCC Component Number.
- (c) Characteristics
- (d) Traceability Information.

4.5.2 Contact Position

Contact position shall be marked on the inserts in accordance with Figure 2(a).

4.5.3 The SCC Component Number

The SCC Component Number shall be constituted and marked as follows:



NOTES

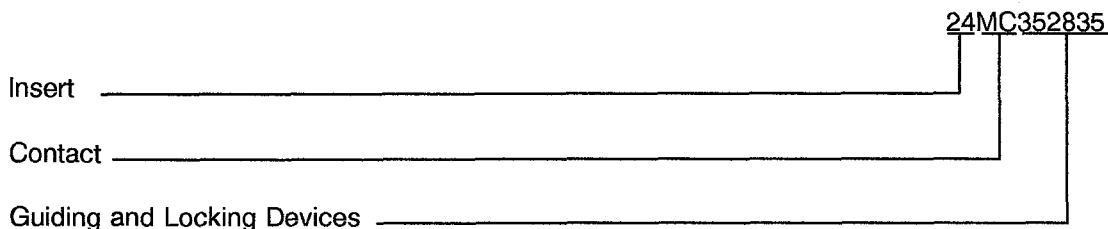
1. Marking of the Type Variant is mandatory. No further reference to type variants is made in this specification.

4.5.4 Characteristics

The characteristics to be marked in the following order of precedence are:-

- (a) Insert.
- (b) Contact.
- (c) Guiding and Locking Devices.

The information shall be constituted and marked as follows:-



4.5.4.1 Insert

Code numbers are specified in Figure 2(a) of this specification.

4.5.4.2 Contacts

Codes are specified in ESA/SCC Detail Specification No. 3401/017.

4.5.4.3 Guiding and Locking Devices

Code numbers are specified in Figure 2(b) of this specification.

<u>35</u>	<u>28</u>	<u>35</u>
Guide or locking device to be placed on left side of insert (as seen from mating side)	Guide or locking device to be placed in centre of insert (if not applicable, use 00)	Guide or locking device to be placed on right side of insert (as seen from mating side)

If the Purchase Order does not specify any guiding or locking devices, the following shall be delivered:

- 2 row plugs : 332633 or 330033
- 3 row plugs : 342734 or 340034
- Receptacle : 362936 or 360036.

Connector savers shall be designated by the contact code FM and codes 000000 when delivered without guiding and locking devices. Codes 000000 are only applicable to savers.

4.5.5 Traceability Information

Traceability information shall be marked in accordance with the requirements of ESA/SCC Basic Specification No. 21700.



4.6 ELECTRICAL MEASUREMENTS

4.6.1 Electrical Measurements at Room Temperature

The parameters to be measured in respect of electrical characteristics are scheduled in Table 2. Unless otherwise specified, the measurements shall be performed at $T_{amb} = +22 \pm 3$ °C.

4.6.2 Electrical Measurements at High and Low Temperatures (Table 3)

Not applicable.

4.6.3 Circuits for Electrical Measurements (Figure 4)

Not applicable.

4.7 BURN-IN AND ELECTRICAL MEASUREMENTS (TABLES 4 AND 5)

Not applicable.

4.8 ENVIRONMENTAL AND ENDURANCE TESTS (CHARTS IV AND V OF ESA/SCC GENERIC SPECIFICATION No. 3401)

4.8.1 Measurements and Inspections on Completion of Environmental Tests

The parameters to be measured and inspections to be performed on completion of environmental testing are scheduled in Table 6. Unless otherwise specified, the measurements shall be performed at $T_{amb} = +22 \pm 3$ °C.

4.8.2 Measurements and Inspections at Intermediate Points during Endurance Tests

Not applicable.

4.8.3 Measurements and Inspections on Completion of Endurance Tests

The parameters to be measured and inspections to be performed on completion of endurance testing are scheduled in Table 6. Unless otherwise specified, the measurements shall be performed at $T_{amb} = +22 \pm 3$ °C.

4.8.4 Conditions for Operating Life Tests (Part of Endurance Testing)

Not applicable.

4.8.5 Electrical Circuit for Operating Life Tests

Not applicable.

4.8.6 Conditions for High Temperature Storage Test (Part of Endurance Testing)

The requirements for the high temperature storage test are specified in Section 9 of ESA/SCC Generic Specification No. 3401. The conditions for high temperature storage testing shall be the maximum storage temperature specified in Table 1(b) of this specification.

**TABLE 2 - ELECTRICAL MEASUREMENTS AT ROOM TEMPERATURE**

No.	CHARACTERISTIC	SYMBOL	ESA/SCC 3401 TEST METHOD	TEST CONDITION	LIMITS		UNIT
					MIN.	MAX.	
1	Insulation Resistance	R _i	Para. 9.1.1.1	Para. 9.1.1.1	10 000	-	MΩ
2	Voltage Proof Leakage Current (Sea Level)	I _L	Para. 9.1.1.2	1200Vrms	-	1.0	mA
3	Mated Shell Conductivity (Voltage Drop)	V _d	Para. 9.1.1.4	Para. 9.1.1.4	Not applicable		mV

TABLES 3, 4 AND 5

Not applicable.



TABLE 6 - MEASUREMENTS AND INSPECTIONS ON COMPLETION OF ENVIRONMENTAL AND ENDURANCE TESTING

NO.	ESA/SCC GENERIC NO. 3401		MEASUREMENTS AND INSPECTIONS		SYMBOL	LIMITS		UNIT
	ENVIRONMENTAL AND ENDURANCE TESTS (1)	TEST METHOD AND CONDITIONS	IDENTIFICATION	CONDITIONS		MIN	MAX	
01	Seal Test	Para. 9.9	ESA/SCC 3401 Para. 9.9			Not applicable		
02	Wiring	Para. 9.10	ESA/SCC 3401/017			-	-	
03	Vibration	Para. 9.11	Initial Measurements Coupling Screw(s) Unlocking Torque Final Measurements Full Engagement Coupling Screw(s) Unlocking Torque Drift Visual Examination	- - - - -	- - Δ -	Record Values - -25	- - +25 -	%
04	Shock or Bump	Para. 9.12	Full Engagement Visual Examination	- -	- -	- -	- -	
05	Climatic Sequence	Para. 9.13	Dry Heat Insulation Resistance Low Air Pressure Voltage Proof Leakage Curr. Damp Heat Insulation Resistance Final Measurements External Visual Inspection Insulation Resistance Voltage Proof Leakage Curr.	Table 2 Item 1 Figure 1 Immediately after test Table 2 Item 1 After 1-24 hrs Recovery ESA/SCC 3401 Para. 9.7 Table 2 Item 1 Table 2 Item 2	Ri I _L Ri - Ri I _L	1 000 ESA/SCC 3401 Para. 9.13.5 100 ESA/SCC 3401 Para. 9.7 Table 2 Item 1 Table 2 Item 2	- - - -	MΩ MΩ
06	Plating Thickness	Para. 9.14	Thickness	-	-	ESA/SCC 3401/017		
07	Joint Strength	Para. 9.15	ESA/SCC 3401 Para. 9.15	-	-	ESA/SCC 3401 Para. 9.15		
08	Rapid Change of Temperature	Para. 9.16	Final Measurements Visual Examination Insulation Resistance Voltage Proof Leakage Curr.	- Table 2 Item 1 Table 2 Item 2	- Ri I _L	- Table 2 Item 1 Table 2 Item 2	- -	
09	Contact Retention (In Insert)	Para. 9.17 & Para. 4.3.4 of this spec.	Contact Displacement	-	-	ESA/SCC 3401 Para. 9.17		
10	Endurance	Para. 9.18	Initial Measurements Mating/Unmating Forces Low Level Contact Resist Mated Shell Conductivity Final Measurements Visual Examination Mating/Unmating Forces Low Level Contact Resistance Drift Mated Shell Conductivity Insulation Resistance Voltage Proof Leakage Curr.	- ESA/SCC 3401/017 Table 2 Item 3 - - ESA/SCC 3401/017 Table 2 Item 3 Table 2 Item 1 Table 2 Item 2	F Rcl Vd - F ΔRcl Vd Ri I _L	Para. 4.3.5 of this spec. Record Values Not applicable - - Para. 4.3.5 of this spec. ESA/SCC 3401/017 Not applicable Table 2 Item 1 Table 2 Item 2		

NOTES 1. The tests in this table refer to either Chart IV or V and shall be used as applicable.



TABLE 6 - MEASUREMENTS AND INSPECTIONS ON COMPLETION OF ENVIRONMENTAL AND ENDURANCE TESTING (CONT'D)

NO.	ESA/SCC GENERIC NO. 3401		MEASUREMENTS AND INSPECTIONS		SYMBOL	LIMITS		UNIT
	ENVIRONMENTAL AND ENDURANCE TESTS (1)	TEST METHOD AND CONDITIONS	IDENTIFICATION	CONDITIONS		MIN	MAX	
11	Permanence of Marking	Para. 9.19	As applicable	-	-	-	-	
12	Mating/Unmating Forces	Para. 9.20	Force	-	F	Para. 4.3.5 of this spec.		
13	High Temperature Storage	Para. 9.21	Initial Measurements Low Level Contact Resis. Mated Shell Conductivity Final Measurements Visual Examination Mating/Unmating Forces Low Level Contact Resistance Drift Rated Current Contact Resis. Mated Shell Conductivity Insulation Resistance Voltage Proof Leakage Curr. Contact Retention (In Insert)	ESA/SCC 3401/017 Table 2 Item 3 - - ESA/SCC 3401/017 ESA/SCC 3401/017 Table 2 Item 3 Table 2 Item 1 Table 2 Item 2 Para. 4.3.4 of this spec.	Rcl Vd - F ΔRcl Rcr Vd Ri I _L -	Record Values Not applicable - - Para. 4.3.5 of this spec. ESA/SCC 3401/017 ESA/SCC 3401/017 Not applicable Table 2 Item 1 Table 2 Item 2 ESA/SCC 3401 Para. 9.17		
14	Corrosion	Para. 9.22	Visual Examination	-	-	Not applicable		
15	Insert Retention (in shell)	Para. 9.23 & Para. 4.3.6 of this spec.	Visual Examination	-	-	Not applicable		
16	Jackscrew Retention	Para. 9.24 & Para. 4.3.7 of this spec.	Visual Examination	-	-	Not applicable		
17	High Temperature Measurements	Para. 9.25	Insulation Resistance	Table 2 Item 1	Ri	500	-	MΩ
18	Overload Test	Para. 9.26	Internal Temperature Rated Current Contact Resis. Mated Shell Conductivity Insulation Resistance Voltage Proof Leakage Curr.	ESA/SCC 3401/017 Table 2 Item 3 Table 2 Item 1 Table 2 Item 2	T Rcr Vd Ri I _L	-	+ 100	°C
19	Maintenance Aging	Para. 9.27	Visual Examination Contact Retention Contact Insertion & Withdrawal Forces	- Para. 4.3.4 of this spec Para. 4.3.8 of this spec	-	-	-	-

NOTES

1. The tests in this table refer to either Chart IV or V and shall be used as applicable.

TABLE 6 - MEASUREMENTS AND INSPECTIONS ON COMPLETION OF ENVIRONMENTAL AND ENDURANCE TESTING (CONT'D)

NO.	ESA/SCC GENERIC NO. 3401		MEASUREMENTS AND INSPECTIONS		SYMBOL	LIMITS		UNIT
	ENVIRONMENTAL AND ENDURANCE TESTS (1)	TEST METHOD AND CONDITIONS	IDENTIFICATION	CONDITIONS		MIN	MAX	
20	Engage/Separation Forces	Para. 9.28 & Para. 4.3.9 of this spec.	Force	-	-	Para. 4.3.9		
21	Oversize Pin Exclusion	Para. 9.29 & Para. 4.3.10 of this spec.	-	-	-	ESA/SCC 3401 Para. 9.29		
22	Probe Damage	Para. 9.30 & Para. 4.3.11 of this spec.	Contact Separation Force	Para. 4.3.9 of this spec.	-	Para. 4.3.9		
23	Solderability	Para. 9.31 & Para. 4.3.12 of this spec.	-	-	-	ESA/SCC 3401 Para. 9.31		

NOTES

1. The tests in this table refer to either Chart IV or V and shall be used as applicable.