





**DOCUMENTATION CHANGE NOTICE**

Rev. Letter	Rev. Date	Reference	CHANGE Item	Approved DCR No.
		This Issue supersedes Issue 1 and incorporates all modifications defined in Revisions 'A' and 'B' to Issue 1 and the changes agreed in the following DCR's:-		
		Cover Page		None
		DCN		None
		Para. 1.1	: Text and specification references amended	221320/ 23797
		Para. 1.2	: Title amended	221320
		Para. 1.6	: Deleted in toto	221320
		Para. 2	: Specification references amended	221320/ 23797
		Table 1(a)	: Title and Contents amended	221320
			: Variants added	221320
		Table 1(b)	: Table sequence and contents amended	221320
		Figure 1	: Variants added	221320
		Figure 2	: Titled as Figure 2(a)	221320
			: Notes 2 and 3 added	221320
			: Shell size "F" added to Table	221320
		Figure 2(a)	: Retitled as Figure 2(b)	221320
			: Existing contact arrangements identified as Variant 01	221320
			: Contact arrangements for Variant 02 added	221320
			: Note 1 expanded and Note 2 added	221320
		Para. 4.2.2	: Existing deviation deleted and new deviation added	221320
		Para. 4.2.3	: Title amended	221320
		Para. 4.2.4	: Title amended	221320
			: Existing text deleted and deviations added	221320
		Para. 4.2.5	: Existing text deleted and deviations added	221320
		Para. 4.3.1	: Existing text deleted and new text added	221320
		Para. 4.3.3	: Title and text amended	221320
		Para. 4.3.4	: Title and text amended	221320
		Para's 4.3.5 to 4.3.12	: Paragraphs added	221320
		Para. 4.4.2	: Text extended	221320
		Para. 4.4.4	: Title and text amended	221320
		Para's 4.4.5 to 4.4.7	: Paragraphs added	221320
		Para. 4.5.1	: Text amended	221320
		Para. 4.5.2	: New para. added and subsequent para's renumbered	221320
		Para. 4.5.3	: Old 4.5.2, "(See Table 1(a))" added to Type Variant and Note deleted	221320
		Para. 4.5.4	: Old 4.5.3, Contact arrangement, Magnetism Level and Connector Savers entries amended	221320
		Para. 4.5.4.2	: Old 4.5.3.2, Shell size "F" and Note added	221320
		Para. 4.5.4.3	: Old 4.5.3.3, text amended	221320
		Para. 4.5.4.4	: Old 4.5.3.4, text and Table amended	221320
		Para. 4.5.4.5	: Old 4.5.3.5, Contact Type amended	221320
		Para. 4.5.4.6	: Old 4.5.3.6, Table definition amended	221320
		Para. 4.5.4.7	: Deleted in toto	221320
		Para. 4.7	: Title amended	221320
		Para. 4.8.6	: Second sentence amended	221320
		Table 2	: No. 2, expanded and No. 3 added	221320
			: Note added	221320



**DOCUMENTATION CHANGE NOTICE**

Rev. Letter	Rev. Date	Reference	CHANGE Item	Approved DCR No.
		Tables 3, 4 and 5 Table 6	: Entry added : Table reformatted	221320 221320/ 23797
'A'	Feb. '00	P1. Cover page P2A. DCN P11. Para. 4.4.1 Para. 4.4.2	: Text amended : Existing text amended and extended	None None 221544 221544

**SCC**ESA/SCC Detail Specification  
No. 3401/020

PAGE 3

ISSUE 2

**TABLE OF CONTENTS**

	<u>Page</u>
<b>1. <u>GENERAL</u></b>	<b>5</b>
1.1 Scope	5
1.2 Range of Components and Component Type Variants	5
1.3 Maximum Ratings	5
1.4 Parameter Derating Information	5
1.5 Physical Dimensions	5
<b>2. <u>APPLICABLE DOCUMENTS</u></b>	<b>5</b>
<b>3. <u>TERMS, DEFINITIONS, ABBREVIATIONS, SYMBOLS AND UNITS</u></b>	<b>5</b>
<b>4. <u>REQUIREMENTS</u></b>	<b>10</b>
4.1 General	10
4.2 Deviations from Generic Specification	10
4.2.1 Deviations from Special In-process Controls	10
4.2.2 Deviations from Final Production Tests	10
4.2.3 Deviations from Burn-in and Electrical Measurements	10
4.2.4 Deviations from Qualification Tests	10
4.2.5 Deviations from Lot Acceptance Tests	10
4.3 Mechanical Requirements	10
4.3.1 Dimension Check	10
4.3.2 Weight	10
4.3.3 Contact Capability	10
4.3.4 Contact Retention (in Insert)	11
4.3.5 Mating and Unmating Forces	11
4.3.6 Insert Retention (in Shell)	11
4.3.7 Jackscrew Retention	11
4.3.8 Contact Insertion and Withdrawal Forces	11
4.3.9 Engagement and Separation Forces	11
4.3.10 Oversize Pin Exclusion	11
4.3.11 Probe Damage	11
4.3.12 Solderability	11
4.4 Materials and Finishes	11
4.4.1 Shells	11
4.4.2 Inserts	11
4.4.3 Spacers	12
4.4.4 Contacts	12
4.4.5 Contact Retaining Clip	12
4.4.6 Guiding and Locking Devices	12
4.4.7 Magnetism Level	12
4.5 Marking	12
4.5.1 General	12
4.5.2 Contact Identification	12
4.5.3 The SCC Component Number	12
4.5.4 Characteristics	13
4.5.5 Traceability Information	14
4.6 Electrical Measurements	14
4.6.1 Electrical Measurements at Room Temperature	14
4.6.2 Electrical Measurements at High and Low Temperatures	14
4.6.3 Circuit for Electrical Measurements	14
4.7 Burn-in and Electrical Measurements	14



	<u>Page</u>
4.8 Environmental and Endurance Tests	16
4.8.1 Measurements and Inspections on Completion of Environmental Tests	16
4.8.2 Measurements and Inspections at Intermediate Points during Endurance Tests	16
4.8.3 Measurements and Inspections on Completion of Endurance Tests	16
4.8.4 Conditions for Operating Life Test	16
4.8.5 Electrical Circuits for Operating Life Tests	16
4.8.6 Conditions for High Temperature Storage Test	16

**TABLES**

1(a) Range of Components and Type Variants	6
1(b) Maximum Ratings	6
2 Electrical Measurements at Room Temperature	15
3 Not applicable	N/A
4 Not applicable	N/A
5 Not applicable	N/A
6 Measurements and Inspections on Completion of Environmental and Endurance Tests	17

**FIGURES**

1 Parameter Derating Information	7
2 Physical Dimensions	8

**APPENDICES (Applicable to specific Manufacturers only)**

None.

**1. GENERAL****1.1 SCOPE**

This specification details the ratings, physical and electrical characteristics, test and inspection data for Connector Savers, Electrical, Rectangular with Removable Contacts, Standard (Gauge 20) and High Density (Gauge 22) Contact Arrangements, based on Type D\*BMA.

It shall be read in conjunction with:-

ESA/SCC Generic Specification No. 3401, Connectors, Electrical, Non-Filtered, Circular and Rectangular.

ESA/SCC Detail Specification No. 3401/021, Contacts, Electrical, Male/Female Type, for 3401/020 Connector Savers.

ESA/SCC Detail Specification No. 3401/022, Accessories for Rectangular Connectors 3401/001, 3401/002 and Connector Savers 3401/020.

the requirements of which are supplemented herein.

**1.2 RANGE OF COMPONENTS AND COMPONENT TYPE VARIANTS**

The different sizes of connector savers specified herein, which are also covered by this specification, together with their mechanical characteristics, are given in Table 1(a).

**1.3 MAXIMUM RATINGS**

The maximum ratings, which shall not be exceeded at any time during use or storage, applicable to the connector savers specified herein, are scheduled in Table 1(b).

**1.4 PARAMETER DERATING INFORMATION**

The applicable derating information for the connector savers specified herein is shown in Figure 1.

**1.5 PHYSICAL DIMENSIONS**

The physical dimensions of the connector savers specified herein are shown in Figure 2.

**2. APPLICABLE DOCUMENTS**

The following documents form part of this specification and shall be read in conjunction with it:-

- (a) ESA/SCC Generic Specification No. 3401 for Connectors, Electrical, Non-Filtered, Circular and Rectangular.
- (b) ESA/SCC Detail Specification No. 3401/021, Contacts, Electrical, Male/Female Type, for 3401/020 Connector Savers.
- (c) ESA/SCC Detail Specification No. 3401/022, Accessories for Rectangular Connectors 3401/001, 3401/002 and Connector Savers 3401/020.
- (d) QQ-B-613, Brass Material.
- (e) MIL-G-45204, Gold Plating, Electro-deposited.
- (f) MIL-C-14550, Copper Plating, Electro-deposited.
- (g) MIL-P-19833, Glass, Fibre-filled Diallyl Phthalate Resin.
- (h) MIL-C-24308, Rack and Panel Connectors, Miniature.
- (i) MIL-M-14, Moulding Plastics and Moulded Plastic Parts, Thermosetting.

**3. TERMS, DEFINITIONS, ABBREVIATIONS, SYMBOLS AND UNITS**

For the purpose of this specification, the terms, definitions, abbreviations, symbols and units specified in ESA/SCC Basic Specification No. 21300 shall apply.

**TABLE 1(a) - RANGE OF COMPONENTS AND TYPE VARIANTS**

SHELL SIZE (1)	MAX. WEIGHT (g) (2)		MATING FORCE (N. max)		UNMATING FORCE			
	Var. 01 (3)	Var. 02 (4)	Var. 01 (3)	Var. 02 (4)	N. min		N. max	
					Var. 01 (3)	Var. 02 (4)	Var. 01 (3)	Var. 02 (4)
E	9.9	9.5	30	46	3.5	3.4	20	28
A	13.7	13.2	50	77	4.5	4.5	34	46
B	18.4	17.8	83	127	8.0	7.9	55	77
C	23.9	23.2	123	177	11.0	11.3	83	109
D	26.8	26.1	166	222	14.5	14.7	120	136
F	-	32.0	-	295	-	20.3	-	177

**NOTES**

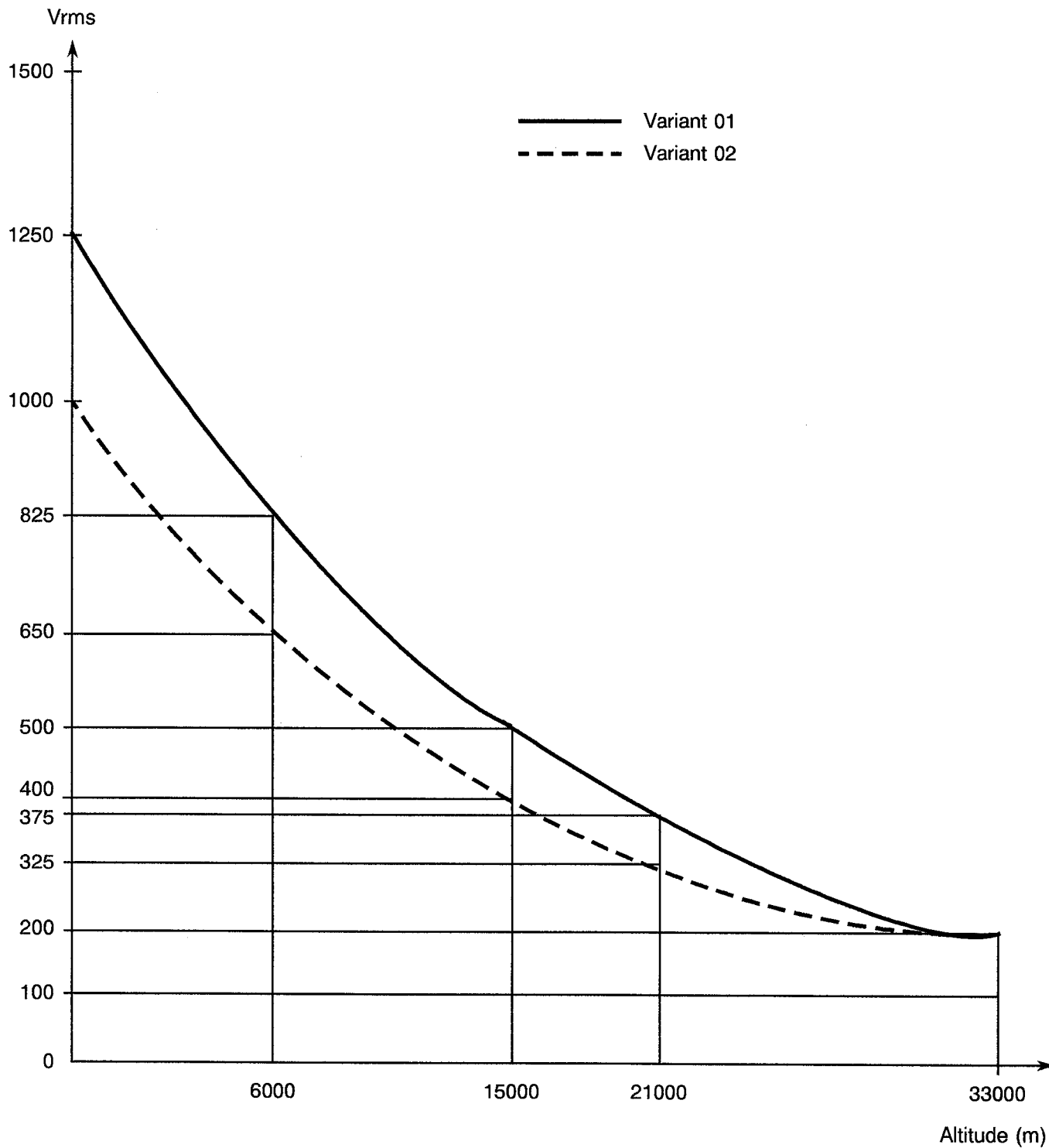
1. See Figure 2(a).
2. Without contacts. See ESA/SCC Detail Specification No. 3401/021 for contact weights.
3. Standard contact arrangements.
4. High density contact arrangements.

**TABLE 1(b) - MAXIMUM RATINGS**

No.	CHARACTERISTICS	SYMBOL	MAXIMUM RATING	UNIT	REMARKS
1	Working Voltage (Sea Level) - Variant 01 - Variant 02	$U_R$	300 250	V <sub>rms</sub> V <sub>rms</sub>	
2	Operating Temperature Range	$T_{op}$	- 55 to + 125	°C	$T_{amb}$
3	Storage Temperature Range	$T_{stg}$	- 65 to + 125	°C	



**FIGURE 1 - PARAMETER DERATING INFORMATION**



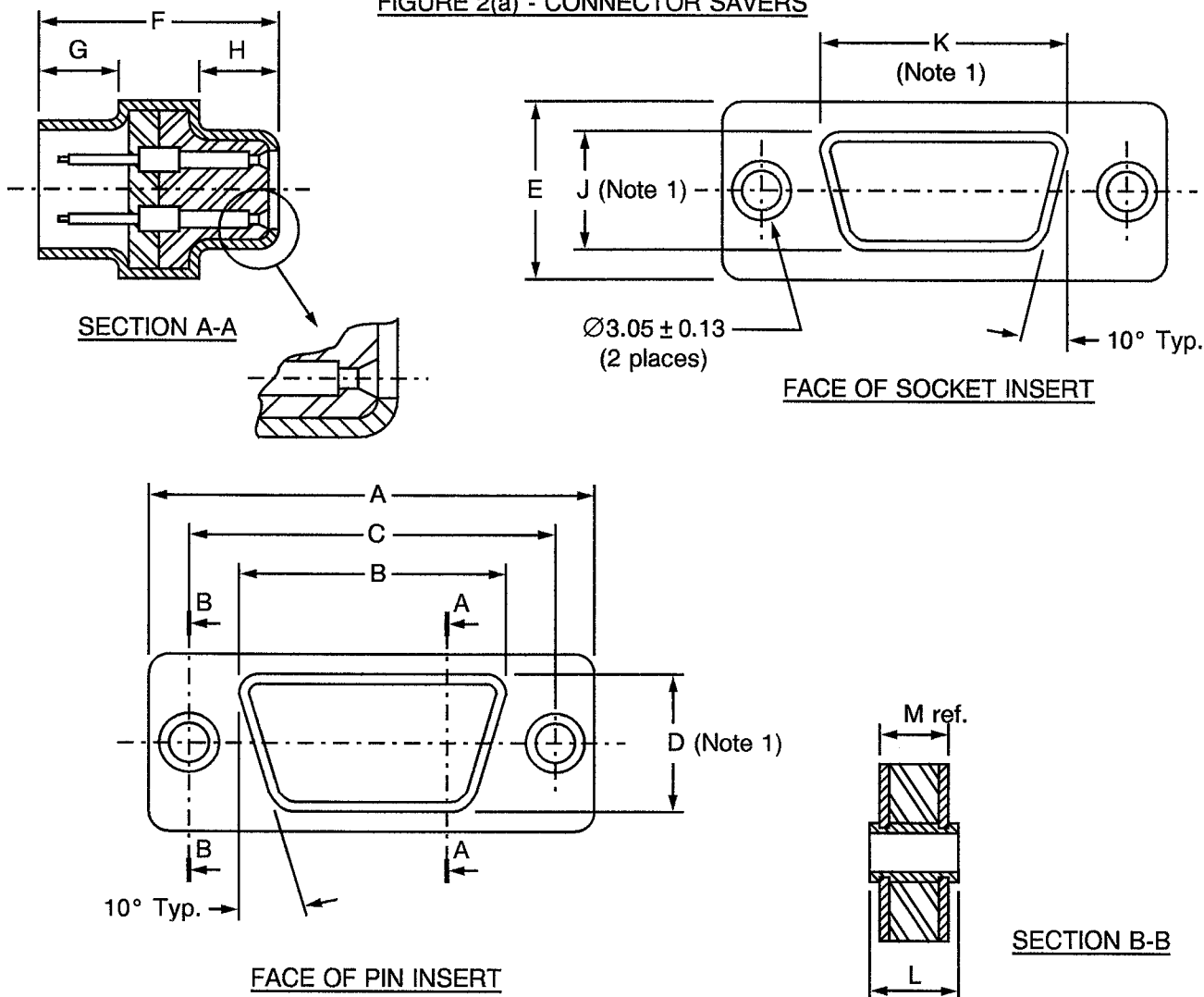
Voltage Proof versus Altitude





**FIGURE 2 - PHYSICAL DIMENSIONS**

**FIGURE 2(a) - CONNECTOR SAVERS**



**NOTES**

1. Dimensions B, D, J and K pertain to front and rear shell keystone and are taken at bottom of draw.
2. All dimensions are in millimetres (angles in degrees).
3. Underlined dimensions, in Table, are critical to ensure mateability.

Shell Size	Dimensions	A	<u>B</u>	<u>C</u>	D	E	F	<u>G</u>	<u>H</u>	<u>J</u>	<u>K</u>	L	M
E	Min.	30.43	17.45	24.87	8.89	12.17	21.62	5.74	5.92	7.57	16.01	10.21	9.61
	Max.	31.19	17.95	25.12	9.39	12.93	22.12	6.24	6.42	8.07	16.51	10.97	10.11
A	Min.	38.76	25.79	33.20	8.89	12.17	21.62	5.74	5.92	7.57	24.34	10.21	9.61
	Max.	39.52	26.29	33.45	9.39	12.93	22.12	6.24	6.42	8.07	24.84	10.97	10.11
B	Min.	52.65	39.96	46.91	9.35	12.17	21.72	5.62	5.92	7.57	38.05	10.21	9.61
	Max.	53.42	40.46	47.17	9.85	12.93	22.22	6.12	6.42	8.07	38.55	10.97	10.11
C	Min.	68.94	56.42	63.37	9.35	12.17	21.72	5.62	5.92	7.57	54.51	10.21	9.61
	Max.	69.70	56.92	63.63	9.85	12.93	22.22	6.12	6.42	8.07	55.01	10.97	10.11
D	Min.	66.55	53.78	60.99	12.04	14.99	21.72	5.62	5.92	10.42	52.12	10.21	9.61
	Max.	67.31	54.28	61.24	12.54	15.75	22.22	6.12	6.42	10.92	52.62	10.97	10.11
F	Min.	68.94	56.06	63.37	12.65	16.59	21.72	5.62	5.92	12.19	55.47	10.21	9.61
	Max.	69.70	56.31	63.63	12.90	17.35	22.22	6.12	6.42	12.45	55.73	10.97	10.11





#### 4. REQUIREMENTS

##### 4.1 GENERAL

The complete requirements for procurement of the connectors specified herein are stated in this specification and ESA/SCC Generic Specification No. 3401. Deviations from the Generic Specification, applicable to this specification only, are listed in Para. 4.2.

Deviations from the applicable Generic Specification and this Detail Specification, formally agreed with specific Manufacturers on the basis that the alternative requirements are equivalent to the ESA/SCC requirements and do not affect the components' reliability, are listed in the appendices attached to this specification.

##### 4.2 DEVIATIONS FROM GENERIC SPECIFICATION

###### 4.2.1 Deviations from Special In-process Controls

None.

###### 4.2.2 Deviations from Final Production Tests (Chart II)

(a) Para. 9.1.1.4, Mated Shell Conductivity: Not applicable.

###### 4.2.3 Deviations from Burn-in and Electrical Measurements (Chart III)

Not applicable.

###### 4.2.4 Deviations from Qualification Tests (Chart IV)

(a) Para. 9.1.1.4, Mated Shell Conductivity: Not applicable.

(b) Para. 9.9, Seal Test: Not applicable.

(c) Para. 9.10, Wiring: Not applicable.

(d) Para. 9.24, Jackscrew Retention: Not applicable.

###### 4.2.5 Deviations from Lot Acceptance Tests (Chart V)

(a) Para. 9.1.1.4, Mated Shell Conductivity: Not applicable.

(b) Para. 9.9, Seal Test: Not applicable.

(c) Para. 9.10, Wiring: Not applicable.

##### 4.3 MECHANICAL REQUIREMENTS

###### 4.3.1 Dimension Check

The dimensions of the connector savers specified herein shall be verified in accordance with the requirements set out in Para. 9.6 of ESA/SCC Generic Specification 3401 and shall conform to those shown in Figure 2 of this specification.

###### 4.3.2 Weight

The maximum weight of the connector savers specified herein, without contacts, shall be as specified in Table 1(a).

###### 4.3.3 Contact Capability

As specified in ESA/SCC Detail Specification No. 3401/021.

**4.3.4 Contact Retention (in Insert)**

As specified in ESA/SCC Detail Specification No. 3401/021.

**4.3.5 Mating and Unmating Forces**

The forces applied for mating and unmating of the connector savers shall conform to the values specified in Table 1(a).

**4.3.6 Insert Retention (In Shell)**

Connector saver inserts shall withstand a pressure of 42.8N/cm<sup>2</sup> without being dislodged from the shell.

**4.3.7 Jackscrew Retention**

Not applicable.

**4.3.8 Contact Insertion and Withdrawal Forces**

As specified in ESA/SCC Detail Specification No. 3401/021.

**4.3.9 Engagement and Separation Forces**

As specified in ESA/SCC Detail Specification No. 3401/021.

**4.3.10 Oversize Pin Exclusion**

As specified in ESA/SCC Detail Specification No. 3401/021.

**4.3.11 Probe Damage**

As specified in ESA/SCC Detail Specification No. 3401/021.

**4.3.12 Solderability**

Not applicable.

**4.4 MATERIALS AND FINISHES**

The materials and finishes shall be as specified herein. Where a definite material is not specified, a material which will enable the connectors specified herein to meet the performance requirements of this specification shall be used. Acceptance or approval of any constituent material does not guarantee acceptance of the finished product.

**4.4.1 Shells**

Shells shall be made of copper alloy with an underplate of 1.0µm minimum of copper to MIL - C - 14450, gold plated with 1.27µm of gold, Type 2 Grade C of MIL-G-45204.

**4.4.2 Inserts**

Inserts shall be made of glass-fibre filled diallylphthalate resin or a suitable thermoplastic material.



4.4.3 Spacers

Spacers shall be made of polyimide material.

4.4.4 Contacts

As specified in ESA/SCC Detail Specification No. 3401/021.

4.4.5 Contact Retaining Clip

The retaining clip shall be made of beryllium copper.

4.4.6 Guiding and Locking Devices

As specified in ESA/SCC Detail Specification No. 3401/022.

4.4.7 Magnetism Level

The allowable value of magnetism shall not exceed that specified for the relevant level (see Para. 4.5.4.6).

4.5 MARKING

4.5.1 General

The marking of all components delivered to this specification shall be in accordance with the requirements of ESA/SCC Basic Specification No. 21700 and the following paragraphs. When the component is too small to accommodate all of the marking specified, as much as space permits shall be marked and the marking information, in full, shall accompany the component in its primary package.

Each component shall be marked in respect of:-

- (a) Contact Identification.
- (b) The SCC Component Number.
- (c) Characteristics.
- (d) Traceability Information.

4.5.2 Contact Identification

Contact identification shall be marked in accordance with Figure 2.

4.5.3 The SCC Component Number

Each component shall bear the SCC Component Number which shall be constituted and marked as follows:

340102001B

Detail Specification Number \_\_\_\_\_

Type Variant (see Table 1(a)) \_\_\_\_\_

Testing Level \_\_\_\_\_

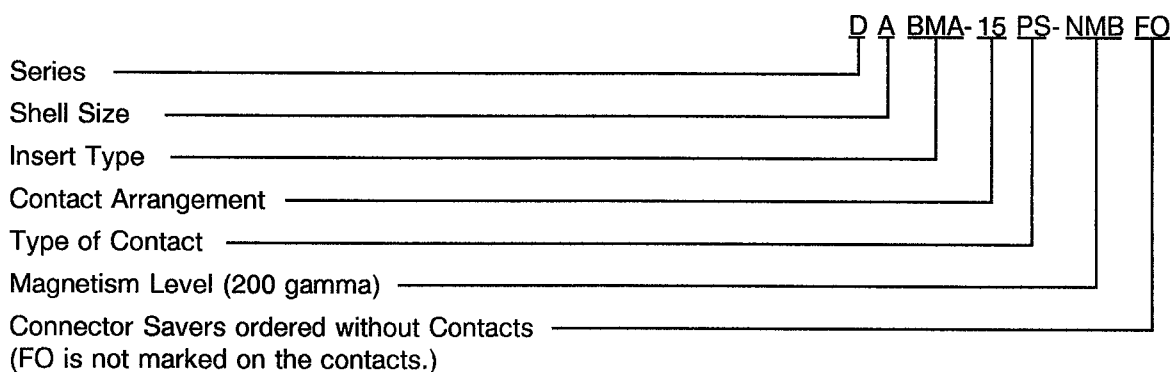


4.5.4 Characteristics

The characteristics to be marked in the following order of precedence are:-

- (a) Series.
- (b) Shell size.
- (c) Insert type.
- (d) Contact arrangement.
- (e) Type of contact.
- (f) Magnetism Level.

The information shall be constituted and marked as follows:-



4.5.4.1 Series

This connector saver series shall be designated by the letter 'D'.

4.5.4.2 Shell Size

The shell size shall be indicated by the letters specified hereafter:-

Code	E	A	B	C	D	F <sub>(1)</sub>
------	---	---	---	---	---	------------------

**N.B.**

- 1. Variant 02 Only.

4.5.4.3 Insert Type

The insert type with contacts is defined by the letters "BMA".



#### 4.5.4.4 Contact Arrangements

The number of contacts shall be as shown in Figure 2(b) and contact arrangements shall be indicated by the codes specified hereafter:-

SHELL SIZE	CODE	
	Variant 01	Variant 02
E	9	15
A	15	26
B	25	44
C	37	62
D	50	78
F	-	104

#### 4.5.4.5 Type of Contact

The contact types shall be indicated by the following code letters:-

CODE LETTER	CONTACT TYPE
PS	Male/Female

#### 4.5.4.6 Magnetism Level

The following codes shall be used for magnetism level:-

CODE	DEFINITION
NMA	Magnetism Level: $\leq$ 2000 gamma
NMB	Magnetism Level: $\leq$ 200 gamma
NMC	Magnetism Level: $\leq$ 20 gamma
NMD	Magnetism Level: $\leq$ 2 gamma

#### 4.5.5 Traceability Information

Traceability information shall be marked in accordance with the requirements of ESA/SCC Basic Specification No. 21700.

#### 4.6 ELECTRICAL MEASUREMENTS

##### 4.6.1 Electrical Measurements at Room Temperature

The parameters to be measured in respect of electrical characteristics are scheduled in Table 2. Unless otherwise specified, these measurements shall be performed at  $T_{amb} = +22 \pm 3$  °C.

##### 4.6.2 Electrical Measurements at High and Low Temperatures (Table 3)

Not applicable.

##### 4.6.3 Circuit for Electrical Measurements (Figure 4)

Not applicable.

#### 4.7 BURN-IN AND ELECTRICAL MEASUREMENTS (TABLES 4 AND 5)

Not applicable.

**TABLE 2 - ELECTRICAL MEASUREMENTS AT ROOM TEMPERATURE**

No.	CHARACTERISTIC	SYMBOL	ESA/SCC 3401 TEST METHOD	TEST CONDITION	LIMITS		UNIT
					MIN.	MAX.	
1	Insulation Resistance	Ri	Para. 9.1.1.1	Para. 9.1.1.1	5000	-	MΩ
2	Voltage Proof Leakage Current Variant 01 Variant 02	I <sub>L</sub>	Para. 9.1.1.2	1250Vrms 1000Vrms	- -	2.0 2.0	mA mA
3	Mated Shell Conductivity (Voltage Drop) (1)	Vd	Para. 9.1.1.4	Para. 9.1.1.4	Not applicable		mV

**NOTES**

1. Applicable to mated connectors with grounding option.

**TABLES 3, 4 AND 5**

Not applicable.





4.8 ENVIRONMENTAL AND ENDURANCE TESTS (CHARTS IV AND V OF ESA/SCC GENERIC SPECIFICATION NO. 3401)

4.8.1 Measurements and Inspections on Completion of Environmental Tests

The parameters to be measured and inspections to be performed on completion of environmental tests are scheduled in Table 6. Unless otherwise stated, the measurements shall be performed at  $T_{amb} = +22 \pm 3$  °C.

4.8.2 Measurements and Inspections at Intermediate Points during Endurance Tests

Not applicable.

4.8.3 Measurements and Inspections on Completion of Endurance Tests

The parameters to be measured and inspections to be performed on completion of endurance tests are scheduled in Table 6. Unless otherwise stated, the measurements shall be performed at  $T_{amb} = +22 \pm 3$  °C.

4.8.4 Conditions for Operating Life Tests (Part of Endurance Testing)

Not applicable.

4.8.5 Electrical Circuits for Operating Life Tests (Figure 5)

Not applicable.

4.8.6 Conditions for High Temperature Storage Test (Part of Endurance Testing)

The requirements for the high temperature storage test are specified in Section 9 of ESA/SCC Generic Specification No. 3401. The conditions for high temperature storage testing shall be the maximum storage temperature specified in Table 1(b) of this specification.





**TABLE 6 - MEASUREMENTS AND INSPECTIONS ON COMPLETION OF ENVIRONMENTAL AND ENDURANCE TESTS (CONT'D)**

NO.	ESA/SCC GENERIC SPEC. NO. 3401		MEASUREMENTS AND INSPECTIONS		SYMBOL	LIMITS		UNIT
	ENVIRONMENTAL AND ENDURANCE TESTS (1)	TEST METHOD AND CONDITIONS	IDENTIFICATION	CONDITIONS		MIN.	MAX.	
11	Permanence of Marking	Para. 9.19	As applicable	-	-	-	-	-
12	Mating/Unmating Forces	Para. 9.20	Force	-	F	Para. 4.3.5 of this spec.		
13	High Temperature Storage	Para. 9.21	<b>Initial Measurements</b>	ESA/SCC 3401/021	Rcl	Record Values		
			Low Level Contact Resistance		Vd	Not applicable		
			Mated Shell Conductivity	Table 2 Item 3				
			<b>Final Measurements</b>					
			Visual Examination	-	-	-	-	-
			Mating/Unmating Forces	-	F	Para. 4.3.5 of this spec.		
			Low Level Contact Resistance Drift	ESA/SCC 3401/021	ΔRcl	ESA/SCC 3401/021		
			Rated Current Contact Resistance	ESA/SCC 3401/021	Rcr	ESA/SCC 3401/021		
			Mated Shell Conductivity	Table 2 Item 3	Vd	Not applicable		
			Insulation Resistance	Table 2 Item 1	Ri	Table 2 Item 1		
Voltage Proof Leakage Current	Table 2 Item 2	IL	Table 2 Item 2					
Contact Retention (in Insert)	Para. 4.3.4 of this spec.	-	ESA/SCC 3401 Para. 9.17					
14	Corrosion	Para. 9.22	Visual Examination	-	-	-	-	-
15	Insert Retention (in Shell)	Para. 9.23 & Para. 4.3.6 of this spec.	Visual Examination	-	-	Para. 4.3.6		-
16	Jackscrew Retention	Para. 9.24 & Para. 4.3.7 of this spec.	Visual Examination			Not applicable		
17	High Temperature Measurements	Para. 9.25	Insulation Resistance	Table 2 Item 1	Ri	500	-	MΩ
18	Overload Test	Para. 9.26	Internal Temperature	ESA/SCC 3401/021	T	-	+ 100	°C
			Rated Current Contact Resistance		Rcr	ESA/SCC 3401/021		
			Mated Shell Conductivity	Table 2 Item 3	Vd	Not applicable		
			Insulation Resistance	Table 2 Item 1	Ri	Table 2 Item 1		
			Voltage Proof Leakage Current	Table 2 Item 2	IL	Table 2 Item 2		
19	Maintenance Aging	Para. 9.27	Visual Examination	-	-	-	-	-
			Contact Retention	Para. 4.3.4 of this spec.	-	ESA/SCC 3401 Para. 9.17		
			Contact Insertion & Withdrawal Forces	Para. 4.3.8 of this spec.	-	Para. 4.3.8		
20	Engage/Separation Forces	Para. 9.28 & Para. 4.3.9 of this spec.	Force			Para. 4.3.9		
21	Oversize Pin Exclusion	Para. 9.29 & Para. 4.3.10 of this spec.				ESA/SCC 3401 Para. 9.29		
22	Probe Damage	Para. 9.30 & Para. 4.3.11 of this spec.	Contact Separation Force	Para. 4.3.9 of this spec.		Para. 4.3.9		
23	Solderability	Para. 9.31 & Para. 4.3.12 of this spec.				Para. 4.3.12		

**NOTES**

1. The tests in this Table refer to either Chart IV or V and shall be used as applicable.