



european space agency  
agence spatiale européenne

Pages 1 to 18

**DIODES, VOLTAGE REGULATOR,**

**BASED ON BZX55 SERIES**

**ESA/SCC Detail Specification No. 5102/010**

**SCC**

**space components  
coordination group**

| Issue/Rev.   | Date        | Approved by        |                                       |
|--------------|-------------|--------------------|---------------------------------------|
|              |             | SCCG Chairman      | ESA Director General<br>or his Deputy |
| Issue 4      | August 1984 | -                  | -                                     |
| Revision 'A' | March 1986  | -                  | -                                     |
| Revision 'B' | July 1993   | <i>Pommes</i>      | <i>[Signature]</i>                    |
| Revision 'C' | July 1996   | <i>[Signature]</i> | <i>[Signature]</i>                    |





**DOCUMENTATION CHANGE NOTICE**

| Rev. Letter | Rev. Date  | Reference  | CHANGE Item   | Approved DCR No.   |
|-------------|------------|--|---|--|
|             |            | <p>This issue supersedes Issue 3 and incorporates all modifications agreed on the basis of Policy DCR's 21022/21025 and the following DCR's:-</p> <p>Para. 2 : MIL-STD-202 added</p> <p>Table 1(a) : Type Variants for lead length added.<br/>Note added</p> <p>Table 1(b) : Amended</p> <p>Figure 1 : Amended</p> <p>Figure 2 : Inches and Lead Variants added</p> <p>Para. 4.2.3 : X-Ray test deleted</p> <p>Tables 2(d.c.) (a.c.) : Format changed</p> <p>Table 2(a.c.) : Sample note added</p> <p>Tables 3 and 4 : Format changed</p> <p>Table 4 : V<sub>Z</sub> limit changed to ±5%</p> <p>Table 4 : I<sub>R</sub> limits changed</p> <p>Table 6 : Format changed</p> <p>Appendix A : New lead material added</p> <p>Appendix A : Qual. and LAT testing changed</p> <p>Appendix B : Amended</p> <p>Appendices : Format changed</p> |   | <p>23177</p> <p>22206</p> <p>23177</p> <p>23177</p> <p>23177/<br/>22206</p> <p>22206/<br/>22236</p> <p>23177</p> <p>22206</p> <p>23177</p> <p>22206</p> <p>22267</p> <p>23177</p> <p>22206</p> <p>24042</p> <p>24029/<br/>24028</p> <p>23187</p> |
| 'A'         | 10-03-1986 | P15. Table 4   | : Amended for incorrect implementation of DCR 22267   | 23242  |
| 'B'         | July '93   | <p>P1. Cover page</p> <p>P2. DCN</p> <p>P4. ToC : Appendix 'A' deleted (T.E.G.)</p> <p>P6. Table 1(a) : Lead Material and/or Finish added</p> <p>P7. Table 1(a) : Lead Material and/or Finish added</p> <p>P10. Para. 4.2.2 : PIND deviation amended</p> <p>Para. 4.2.3 : Radiographic Inspection deviation amended</p> <p>P15. Table 3 : Note 3 deleted</p> <p>P18/19. Appendix 'A' : Appendix deleted</p> <p>P20. Appendix 'B' : Renumbered Appendix 'A' and relocated page 18</p> <p>This document has been transferred from hardcopy to electronic format. The content is unchanged but minor differences in presentation exist.</p>   | <p>None</p> <p>None</p> <p>23493</p> <p>21025</p> <p>21025</p> <p>21043</p> <p>21049</p> <p>21047</p> <p>23493</p> <p>23493</p> |  |
| 'C'         | July '96   | <p>P1. Cover page</p> <p>P2. DCN</p> <p>P3. T of C : Para. 1.7 entry added</p> <p>P5. Para. 1.7 : Paragraph added</p>  |   | <p>None</p> <p>None</p> <p>21083</p> <p>21083</p>  |



**TABLE OF CONTENTS**

|   | <u>Page</u> |
|---|-------------|
| <b>1. <u>GENERAL</u></b>  | <b>5</b>    |
| 1.1 Scope   | 5           |
| 1.2 Component Type Variants   | 5           |
| 1.3 Maximum Ratings   | 5           |
| 1.4 Parameter Derating Information                                    | 5           |
| 1.5 Physical Dimensions   | 5           |
| 1.6 Functional Diagram  | 5           |
| 1.7 High Temperature Test Precautions                                 | 5           |
| <b>2. <u>APPLICABLE DOCUMENTS</u></b>                                 | <b>5</b>    |
| <b>3. <u>TERMS, DEFINITIONS, ABBREVIATIONS, SYMBOLS AND UNITS</u></b> | <b>5</b>    |
| <b>4. <u>REQUIREMENTS</u></b>   | <b>10</b>   |
| 4.1 General   | 10          |
| 4.2 Deviations from Generic Specification                             | 10          |
| 4.2.1 Deviations from Special In-process Controls                     | 10          |
| 4.2.2 Deviations from Final Production Tests (Chart II)               | 10          |
| 4.2.3 Deviations from Burn-in and Electrical Measurements (Chart III) | 10          |
| 4.2.4 Deviations from Qualification Tests (Chart IV)                  | 10          |
| 4.2.5 Deviations from Lot Acceptance Tests (Chart V)                  | 10          |
| 4.3 Mechanical Requirements   | 11          |
| 4.3.1 Dimension Check   | 11          |
| 4.3.2 Weight  | 11          |
| 4.3.3 Terminal Strength   | 11          |
| 4.4 Materials and Finishes  | 11          |
| 4.4.1 Case  | 11          |
| 4.4.2 Lead Material and Finish  | 11          |
| 4.5 Marking   | 12          |
| 4.5.1 General   | 12          |
| 4.5.2 Lead Identification   | 12          |
| 4.5.3 The SCC Component Number  | 12          |
| 4.5.4 Traceability Information  | 12          |
| 4.5.5 Marking of Small Components                                     | 12          |

|   |   |  |   |                           |
|---|---|--|---|---------------------------|
|  |  | <p style="text-align: center;">ESA/SCC Detail Specification<br/>No. 5102/010</p> | <p style="text-align: center;">Rev. 'B'</p> | <p>PAGE 4<br/>ISSUE 4</p> |
|---|---|--|---|---------------------------|

**TABLE OF CONTENTS (continued)**

|   | <u>Page</u> |
|---|-------------|
| 4.6 Electrical Measurements   | 13          |
| 4.6.1 Electrical Measurements at Room Temperature   | 13          |
| 4.6.2 Electrical Measurements at High and Low Temperatures                                | 13          |
| 4.6.3 Circuits for Electrical Measurements  | 13          |
| 4.7 Burn-in Tests   | 13          |
| 4.7.1 Parameter Drift Values  | 13          |
| 4.7.2 Conditions for Burn-in  | 13          |
| 4.7.3 Electrical Circuits for Burn-in   | 13          |
| 4.8 Environmental and Endurance Tests   | 18          |
| 4.8.1 Electrical Measurements on Completion of Environmental Tests                        | 16          |
| 4.8.2 Electrical Measurements at Intermediate Points and on Completion of Endurance Tests | 16          |
| 4.8.3 Conditions for Operating Life Tests (Part of Endurance Testing)                     | 16          |
| 4.8.4 Electrical Circuits for Operating Life Tests  | 16          |
| 4.8.5 Conditions for High Temperature Storage (Part of Endurance Testing)                 | 16          |

**TABLES**

|   |    |
|---|----|
| 1(a) Type Variants  | 6  |
| 1(b) Maximum Ratings  | 8  |
| 2 Electrical Measurements at Room Temperature - d.c. Parameters                       | 14 |
| Electrical Measurements at Room Temperature - a.c. Parameters                         | 14 |
| 3 Electrical Measurements at High and Low Temperatures                                | 15 |
| 4 Parameter Drift Values  | 15 |
| 5 Conditions for Burn-in  | 15 |
| 6 Electrical Measurements at Intermediate Points and on Completion of Endurance Tests | 17 |

**FIGURES**

|                                  |      |
|----------------------------------|------|
| 1 Parameter Derating Information | 8    |
| 2 Physical Dimensions            | 9    |
| 3 Functional Diagram             | 9    |
| 4 Test Circuits                  | 14   |
| 5 Electrical Circuit for Burn-in | N.A. |

**APPENDICES (Applicable to specific Manufacturers only)**

|   |    |
|---|----|
| 'A' Agreed Deviations for Thomson-CSF (F) | 18 |
|---|----|

**1. GENERAL****1.1 SCOPE**

This specification details the ratings, physical and electrical characteristics, test and inspection data for Diodes, Voltage Regulator, based on the BZX55 Series.

It shall be read in conjunction with ESA/SCC Generic Specification No. 5000, the requirements of which are supplemented herein.

**1.2 COMPONENT TYPE VARIANTS**

Variants of the basic diodes specified herein, which are also covered by this specification, are given in Table 1(a).

**1.3 MAXIMUM RATINGS**

The maximum ratings, which shall not be exceeded at any time during use or storage, applicable to the diodes specified herein, are scheduled in Table 1(b).

**1.4 PARAMETER DERATING INFORMATION**

The derating information applicable to the diodes specified herein is shown in Figure 1.

**1.5 PHYSICAL DIMENSIONS**

The physical dimensions of the diodes specified herein are shown in Figure 2.

**1.6 FUNCTIONAL DIAGRAM**

The functional diagram, showing lead identification, of the diodes specified herein, is shown in Figure 3.

**1.7 HIGH TEMPERATURE TEST PRECAUTIONS**

For tin-lead plated or solder-dipped lead finish, all tests to be performed at a temperature that exceeds +125°C shall be carried out in a 100% inert atmosphere.

**2. APPLICABLE DOCUMENTS**

The following documents form part of this specification and shall be read in conjunction with it:

- (a) ESA/SCC Generic Specification No. 5000 for Discrete Semiconductors.
- (b) MIL-STD-750, Test Methods and Procedures for Semiconductor Devices.
- (c) MIL-STD-202, Test Methods for Electronic and Electrical Component Parts.

**3. TERMS, DEFINITIONS, ABBREVIATIONS, SYMBOLS AND UNITS**

For the purpose of this specification, the terms, definitions, abbreviations, symbols and units specified in ESA/SCC Basic Specification No. 21300 shall apply.



**SGC**

ESA/SCC Detail Specification

No. 5102/010

PAGE 6

Rev. 'B'

ISSUE 4

**TABLE 1(a) - TYPE VARIANTS**

| Variant<br>(See<br>Notes)<br>(1) | Based<br>on Type<br>BZX<br>(2) | Vz<br>Norm.<br>(V)<br>(3) | Vz<br>Min.<br>(V)<br>(4) | Vz<br>Max.<br>(V)<br>(5) | Iz<br>(mA)<br>(6) | Izmax<br>(mA)<br>(7) | Zzmax<br>(Ω)<br>(8) | VR<br>(V)<br>(9) | IR<br>(max. μA)<br>(10) | TCVZ (%/°C)<br>(11) |       | Zk<br>(max.<br>Ω)<br>(12) | Izk<br>(mA)<br>(13) | IR max at<br>Tamb =<br>+150°C (μA)<br>(14) | Lead<br>Material and<br>Finish<br>(15) |
|----------------------------------|--------------------------------|---------------------------|--------------------------|--------------------------|-------------------|----------------------|---------------------|------------------|-------------------------|---------------------|-------|---------------------------|---------------------|--|--|
|                                  |                                |                           |                          |                          |                   |                      |                     |                  |                         | Min.                | Max.  |                           |                     |  |  |
| 01, 48                           | 55 - C2V4                      | 2.4                       | 2.28                     | 2.56                     | 5.0               | 115                  | 85                  | 1.0              | 50                      | -0.08               | -0.06 | 600                       | 1.0                 | 100  | C3 or C4                               |
| 02, 49                           | 55 - C2V7                      | 2.7                       | 2.5                      | 2.9                      | 5.0               | 135                  | 85                  | 1.0              | 10                      | -0.08               | -0.06 | 600                       | 1.0                 | 50   | C3 or C4                               |
| 03, 50                           | 55 - C3V0                      | 3.0                       | 2.8                      | 3.2                      | 5.0               | 125                  | 85                  | 1.0              | 4.0                     | -0.08               | -0.06 | 600                       | 1.0                 | 40   | C3 or C4                               |
| 04, 51                           | 55 - C3V3                      | 3.3                       | 3.1                      | 3.5                      | 5.0               | 115                  | 85                  | 1.0              | 2.0                     | -0.08               | -0.05 | 600                       | 1.0                 | 40   | C3 or C4                               |
| 05, 52                           | 55 - C3V6                      | 3.6                       | 3.4                      | 3.8                      | 5.0               | 105                  | 85                  | 1.0              | 2.0                     | -0.08               | -0.04 | 600                       | 1.0                 | 40   | C3 or C4                               |
| 06, 53                           | 55 - C3V9                      | 3.9                       | 3.7                      | 4.1                      | 5.0               | 95                   | 85                  | 1.0              | 2.0                     | -0.07               | -0.03 | 600                       | 1.0                 | 40   | C3 or C4                               |
| 07, 54                           | 55 - C4V3                      | 4.3                       | 4.0                      | 4.6                      | 5.0               | 90                   | 75                  | 1.0              | 1.0                     | -0.04               | -0.01 | 600                       | 1.0                 | 20   | C3 or C4                               |
| 08, 55                           | 55 - C4V7                      | 4.7                       | 4.4                      | 5.0                      | 5.0               | 85                   | 60                  | 1.0              | 0.5                     | -0.03               | +0.01 | 600                       | 1.0                 | 10   | C3 or C4                               |
| 09, 56                           | 55 - C5V1                      | 5.1                       | 4.8                      | 5.4                      | 5.0               | 80                   | 35                  | 1.0              | 0.1                     | -0.02               | +0.05 | 550                       | 1.0                 | 2.0  | C3 or C4                               |
| 10, 57                           | 55 - C5V6                      | 5.6                       | 5.2                      | 6.0                      | 5.0               | 70                   | 25                  | 1.0              | 0.1                     | -0.01               | +0.06 | 450                       | 1.0                 | 2.0  | C3 or C4                               |
| 11, 58                           | 55 - C6V2                      | 6.2                       | 5.8                      | 6.6                      | 5.0               | 64                   | 10                  | 2.0              | 0.1                     | 0                   | +0.07 | 200                       | 1.0                 | 2.0  | C3 or C4                               |
| 12, 59                           | 55 - C6V8                      | 6.8                       | 6.4                      | 7.2                      | 5.0               | 58                   | 8.0                 | 3.0              | 0.1                     | +0.01               | +0.08 | 150                       | 1.0                 | 2.0  | C3 or C4                               |
| 13, 60                           | 55 - C7V5                      | 7.5                       | 7.0                      | 7.9                      | 5.0               | 53                   | 7.0                 | 5.0              | 0.1                     | +0.01               | +0.09 | 50                        | 1.0                 | 2.0  | C3 or C4                               |
| 14, 61                           | 55 - C8V2                      | 8.2                       | 7.7                      | 8.7                      | 5.0               | 47                   | 7.0                 | 6.2              | 0.1                     | +0.01               | +0.09 | 50                        | 1.0                 | 2.0  | C3 or C4                               |
| 15, 62                           | 55 - C9V1                      | 9.1                       | 8.5                      | 9.6                      | 5.0               | 43                   | 10                  | 6.8              | 0.1                     | +0.02               | +0.10 | 50                        | 1.0                 | 2.0  | C3 or C4                               |
| 16, 63                           | 55 - C10                       | 10                        | 9.4                      | 10.6                     | 5.0               | 40                   | 15                  | 7.5              | 0.1                     | +0.03               | +0.11 | 70                        | 1.0                 | 2.0  | C3 or C4                               |
| 17, 64                           | 55 - C11                       | 11                        | 10.4                     | 11.6                     | 5.0               | 36                   | 20                  | 8.2              | 0.1                     | +0.03               | +0.11 | 70                        | 1.0                 | 2.0  | C3 or C4                               |
| 18, 65                           | 55 - C12                       | 12                        | 11.4                     | 12.7                     | 5.0               | 32                   | 20                  | 9.1              | 0.1                     | +0.03               | +0.11 | 90                        | 1.0                 | 2.0  | C3 or C4                               |
| 19, 66                           | 55 - C13                       | 13                        | 12.4                     | 14.1                     | 5.0               | 29                   | 26                  | 10               | 0.1                     | +0.03               | +0.11 | 110                       | 1.0                 | 2.0  | C3 or C4                               |
| 20, 67                           | 55 - C15                       | 15                        | 13.8                     | 15.6                     | 5.0               | 27                   | 30                  | 11               | 0.1                     | +0.03               | +0.11 | 110                       | 1.0                 | 2.0  | C3 or C4                               |
| 21, 68                           | 55 - C16                       | 16                        | 15.3                     | 17.1                     | 5.0               | 24                   | 40                  | 12               | 0.1                     | +0.03               | +0.11 | 170                       | 1.0                 | 2.0  | C3 or C4                               |
| 22, 69                           | 55 - C18                       | 18                        | 16.8                     | 19.1                     | 5.0               | 21                   | 50                  | 13               | 0.1                     | +0.03               | +0.11 | 170                       | 1.0                 | 2.0  | C3 or C4                               |
| 23, 70                           | 55 - C20                       | 20                        | 18.8                     | 21.2                     | 5.0               | 20                   | 55                  | 15               | 0.1                     | +0.03               | +0.11 | 220                       | 1.0                 | 2.0  | C3 or C4                               |

**NOTES:** See Page 7.



ESA/SCC Detail Specification

No. 5102/010

**TABLE 1(a) - TYPE VARIANTS (Cont'd)**

| Variant<br>(See<br>Notes)<br>(1) | Based<br>on Type<br>BZX<br>(2) | Vz<br>Nom.<br>(V)<br>(3) | Vz<br>Min.<br>(V)<br>(4) | Vz<br>Max.<br>(V)<br>(5) | Iz<br>(mA)<br>(6) | Izmax<br>(mA)<br>(7) | Zzmax<br>(Ω)<br>(8) | VR<br>(V)<br>(9) | IR<br>(max. μA)<br>(10) | TCVZ (%/°C)<br>(11) |       | Zk<br>(max.<br>Ω)<br>(12) | Izk<br>(mA)<br>(13) | IR max at<br>Tamb =<br>+150°C (μA)<br>(14) | Lead<br>Material and<br>Finish<br>(15) |
|----------------------------------|--------------------------------|--------------------------|--------------------------|--------------------------|-------------------|----------------------|---------------------|------------------|-------------------------|---------------------|-------|---------------------------|---------------------|--|--|
|                                  |                                |                          |                          |                          |                   |                      |                     |                  |                         | Min.                | Max.  |                           |                     |  |  |
| 24, 71                           | 55 - C22                       | 22                       | 20.8                     | 23.3                     | 5.0               | 18                   | 55                  | 16               | 0.1                     | +0.03               | +0.11 | 220                       | 1.0                 | 2.0  | C3 or C4                               |
| 25, 72                           | 55 - C24                       | 24                       | 22.8                     | 25.6                     | 5.0               | 16                   | 80                  | 18               | 0.1                     | +0.04               | +0.12 | 220                       | 1.0                 | 2.0  | C3 or C4                               |
| 26, 73                           | 55 - C27                       | 27                       | 25.1                     | 28.9                     | 5.0               | 14                   | 80                  | 20               | 0.1                     | +0.04               | +0.12 | 220                       | 1.0                 | 2.0  | C3 or C4                               |
| 27, 74                           | 55 - C30                       | 30                       | 28                       | 32                       | 5.0               | 13                   | 80                  | 22               | 0.1                     | +0.04               | +0.12 | 220                       | 1.0                 | 2.0  | C3 or C4                               |
| 28, 75                           | 55 - C33                       | 33                       | 31                       | 35                       | 5.0               | 12                   | 80                  | 24               | 0.1                     | +0.04               | +0.12 | 220                       | 1.0                 | 2.0  | C3 or C4                               |
| 29, 76                           | 55 - C36                       | 36                       | 34                       | 38                       | 5.0               | 11                   | 80                  | 27               | 0.1                     | +0.04               | +0.12 | 220                       | 1.0                 | 2.0  | C3 or C4                               |
| 30, 77                           | 55 - C39                       | 39                       | 37                       | 41                       | 2.5               | 10                   | 90                  | 30               | 0.1                     | +0.04               | +0.12 | 500                       | 0.5                 | 5.0  | C3 or C4                               |
| 31, 78                           | 55 - C43                       | 43                       | 40                       | 46                       | 2.5               | 9.2                  | 90                  | 33               | 0.1                     | +0.04               | +0.12 | 600                       | 0.5                 | 5.0  | C3 or C4                               |
| 32, 79                           | 55 - C47                       | 47                       | 44                       | 50                       | 2.5               | 8.5                  | 110                 | 36               | 0.1                     | +0.04               | +0.12 | 700                       | 0.5                 | 5.0  | C3 or C4                               |
| 33, 80                           | 55 - C51                       | 51                       | 48                       | 54                       | 2.5               | 7.8                  | 125                 | 39               | 0.1                     | +0.04               | +0.12 | 700                       | 0.5                 | 10   | C3 or C4                               |
| 34, 81                           | 55 - C56                       | 56                       | 52                       | 60                       | 2.5               | 7.0                  | 135                 | 43               | 0.1                     | +0.04               | +0.12 | 1000                      | 0.5                 | 10   | C3 or C4                               |
| 35, 82                           | 55 - C62                       | 62                       | 58                       | 66                       | 2.5               | 6.4                  | 150                 | 47               | 0.1                     | +0.04               | +0.12 | 1000                      | 0.5                 | 10   | C3 or C4                               |
| 36, 83                           | 55 - C68                       | 68                       | 64                       | 72                       | 2.5               | 5.9                  | 200                 | 51               | 0.1                     | +0.04               | +0.12 | 1000                      | 0.5                 | 10   | C3 or C4                               |
| 37, 84                           | 55 - C75                       | 75                       | 70                       | 80                       | 2.5               | 5.3                  | 250                 | 56               | 0.1                     | +0.04               | +0.12 | 1500                      | 0.5                 | 10   | C3 or C4                               |
| 38, 85                           | 55 - C82                       | 82                       | 77                       | 87                       | 2.5               | 4.8                  | 300                 | 62               | 0.1                     | +0.04               | +0.12 | 2000                      | 0.5                 | 10   | C3 or C4                               |
| 39, 86                           | 55 - C91                       | 91                       | 85                       | 94                       | 1.0               | 4.4                  | 450                 | 68               | 0.1                     | +0.04               | +0.12 | 5000                      | 0.1                 | 10   | C3 or C4                               |
| 40, 87                           | 55 - C100                      | 100                      | 96                       | 106                      | 1.0               | 4.0                  | 450                 | 75               | 0.1                     | +0.04               | +0.12 | 5000                      | 0.1                 | 10   | C3 or C4                               |
| 41, 88                           | 55 - C110                      | 110                      | 104                      | 116                      | 1.0               | 3.6                  | 600                 | 82               | 0.1                     | +0.04               | +0.12 | 5000                      | 0.1                 | 10   | C3 or C4                               |
| 42, 89                           | 55 - C120                      | 120                      | 114                      | 127                      | 1.0               | 3.3                  | 800                 | 91               | 0.1                     | +0.04               | +0.12 | 5000                      | 0.1                 | 10   | C3 or C4                               |
| 43, 90                           | 55 - C130                      | 130                      | 124                      | 141                      | 1.0               | 3.0                  | 1000                | 100              | 0.1                     | +0.04               | +0.12 | 5000                      | 0.1                 | 10   | C3 or C4                               |
| 44, 91                           | 55 - C150                      | 150                      | 138                      | 156                      | 1.0               | 2.6                  | 1200                | 110              | 0.1                     | +0.04               | +0.12 | 5000                      | 0.1                 | 10   | C3 or C4                               |
| 45, 92                           | 55 - C160                      | 160                      | 153                      | 171                      | 1.0               | 2.5                  | 1500                | 120              | 0.1                     | +0.04               | +0.12 | 5000                      | 0.1                 | 10   | C3 or C4                               |
| 46, 93                           | 55 - C180                      | 180                      | 168                      | 191                      | 1.0               | 2.2                  | 1800                | 130              | 0.1                     | +0.04               | +0.12 | 5000                      | 0.1                 | 10   | C3 or C4                               |
| 47, 94                           | 55 - C200                      | 200                      | 188                      | 212                      | 1.0               | 2.0                  | 2000                | 150              | 0.1                     | +0.04               | +0.12 | 5000                      | 0.1                 | 10   | C3 or C4                               |

**NOTES**

1. Variants 01 to 47 have lead lengths of 1.0inch (25.4mm) min.
2. Variants 48 to 94 have lead lengths of 0.5 inch (12.7m.) min.
3. See Figure 2.



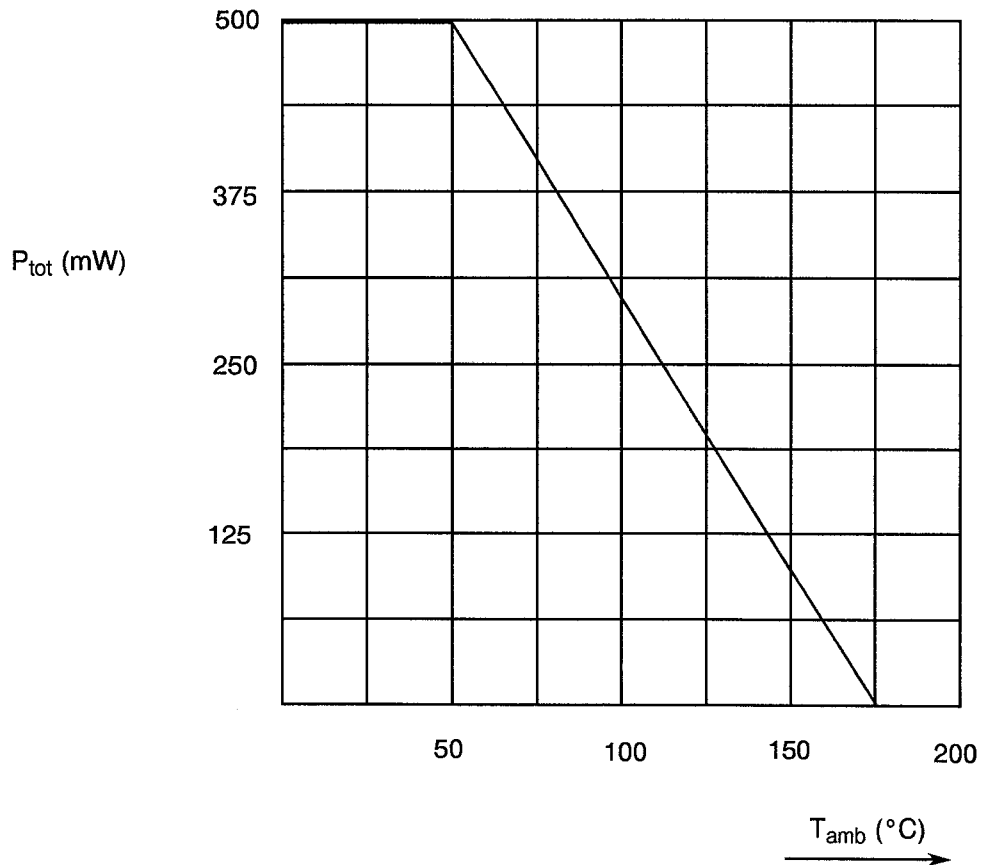
**TABLE 1(b) - MAXIMUM RATINGS**

| No. | CHARACTERISTICS             | SYMBOL    | MAXIMUM RATINGS | UNIT               | REMARKS  |
|-----|-----------------------------|-----------|-----------------|--------------------|--|
| 1   | Power Dissipation           | $P_{tot}$ | 500             | mW                 | $T_{amb} \leq +25^{\circ}\text{C}$<br>See Notes 1, 2                   |
| 2   | Operating Temperature Range | $T_{op}$  | -55 to +150     | $^{\circ}\text{C}$ | $T_{amb}$  |
| 3   | Storage Temperature Range   | $T_{stg}$ | -65 to +150     | $^{\circ}\text{C}$ |  |
| 4   | Soldering Temperature       | $T_{sol}$ | +260            | $^{\circ}\text{C}$ | Time: $\leq 10$ seconds;<br>Distance from case:<br>$\geq 1.5\text{mm}$ |

**NOTES**

1. Leads shall be maintained at ambient temperature 4 mm from the body.
2. For derating at  $T_{amb} > +25^{\circ}\text{C}$  see Figure 1.

**FIGURE 1 - PARAMETER DERATING INFORMATION**

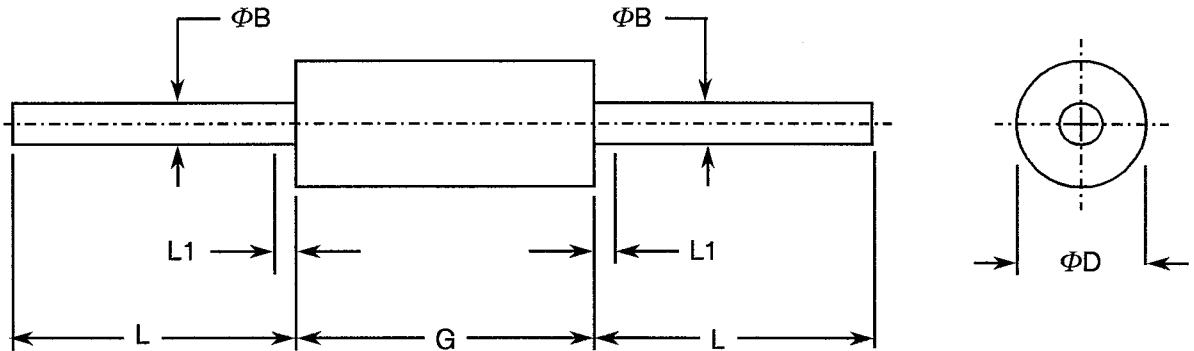


Power Dissipation Versus Temperature





**FIGURE 2 - PHYSICAL DIMENSIONS**

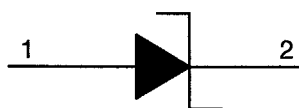


| SYMBOL   | MILLIMETRES |       | INCHES |       | NOTES |
|----------|-------------|-------|--------|-------|-------|
|          | MIN. (3)    | MAX.  | MIN.   | MAX.  |       |
| $\Phi B$ | 0.458       | 0.558 | 0.018  | 0.022 | -     |
| $\Phi D$ | 1.42        | 1.91  | 0.056  | 0.075 | 1     |
| G        | 3.56        | 4.57  | 0.140  | 0.180 | 1     |
| L        | Note 4      | -     | Note 4 | -     | -     |
| L1       | -           | 2.5   | -      | 0.098 | 2     |

**NOTES**

1. Package contour optional within cylinder of diameter  $\Phi D$  and length G. Slugs, if any, shall be included within this cylinder but shall not be subject to the minimum limit of  $\Phi D$ .
2. Lead diameter not controlled in this zone to allow for flash, lead finish build-up, and minor irregularities other than slugs.
3. The millimetre dimensions are derived from the original inch dimensions.
4. Variants 01 to 47 have leads with L of 1 inch (25.4 mm) min and variants 48 to 94 have leads with L of 0.5 inch (12.7 mm) min.

**FIGURE 3 - FUNCTIONAL DIAGRAM**



1. Anode
2. Cathode

**NOTES**

1. The cathode end shall be marked with a coloured ring.

**4. REQUIREMENTS****4.1 GENERAL**

The complete requirements for procurement of the diodes specified herein are stated in this specification and ESA/SCC Generic Specification No. 5000 for Discrete Semiconductors. Deviations from the Generic Specification applicable to this specification only, are listed in Para. 4.2.

Deviations from the applicable Generic Specification and this Detail Specification, formally agreed with specific Manufacturers on the basis that the alternative requirements are equivalent to the ESA/SCC requirements and do not affect the components' reliability, are listed in the appendices attached to this specification.

**4.2 DEVIATIONS FROM GENERIC SPECIFICATION****4.2.1 Deviations from Special In-process Controls**

None.

**4.2.2 Deviations from Final Production Tests (Chart II)**

(a) Bond Strength Test: Shall not be performed.

(b) Die Shear Test: Shall not be performed.

(c) Particle Impact Noise Detection (PIND) Test: Not applicable.

(d) Thermal Shock Test: Shall be performed in accordance with Test Method 107, Condition 'B', of MIL-STD-202.

**4.2.3 Deviations from Burn-in and Electrical Measurements (Chart III)**

(a) H.T.R.B. Test: Shall not be performed.

(b) Radiographic Inspection: Not applicable.

**4.2.4 Deviations from Qualification Tests (Chart IV)**

(a) Bond Strength Test: Shall not be performed.

(b) Die Shear Test: Shall not be performed.

**4.2.5 Deviations from Lot Acceptance Tests (Chart V)**

None.



#### 4.3 MECHANICAL REQUIREMENTS

##### 4.3.1 Dimension Check

The dimensions of the diodes specified herein shall be checked. They shall conform to those shown in Figure 2.

##### 4.3.2 Weight

The maximum weight of the diodes specified herein shall be 0.2 grammes.

##### 4.3.4 Terminal Strength

The requirements for terminal strength testing are specified in Section 9 of ESA/SCC Generic Specification No. 5000. The test conditions shall be as follows:-

Test Condition : 'A'.  
Applied Force : 5.0 Newtons.  
Duration : 10 seconds

#### 4.4 MATERIALS AND FINISHES

The materials and finishes shall be as specified herein. Where a definite material is not specified, a material which will enable the diodes specified herein to meet the performance requirements of this specification shall be used. Acceptance or approval of any constituent material does not guarantee acceptance of the finished product.

##### 4.4.1 Case

Glass, hermetically sealed.

##### 4.4.2 Lead Material and Finish

The requirements of the lead material shall be Type 'C' with either Type '3 or 4' finish in accordance with the requirements of ESA/SCC Basic Specification No. 23500.



4.5 MARKING

4.5.1 General

The marking of all components delivered to this specification shall be in accordance with the requirements of ESA/SCC Basic Specification No. 21700. Each component shall be marked in respect of:-

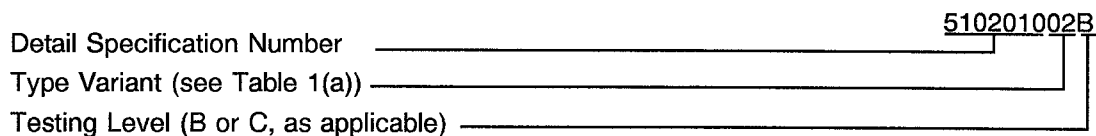
- (a) Lead Identification.
- (b) The SCC Component Number.
- (c) Traceability Information.

4.5.2 Lead Identification

Lead identification shall be as shown in Figures 2 and 3 of this specification.

4.5.3 The SCC Component Number

Each component shall bear the SCC Component Number which shall be constituted and marked as follows:



4.5.4 Traceability Information

Each component shall be marked in respect of traceability information in accordance with the requirements of ESA/SCC Basic Specification No. 21700.

4.5.5 Marking of Small Components

When it is considered that the component is too small to accommodate the marking as specified above, as much as space permits shall be marked. The order of precedence shall be as follows:-

- (a) Lead Identification.
- (b) The SCC Component Number.
- (c) Traceability Information.

The marking information in full shall accompany each component in its primary package.



#### 4.6 ELECTRICAL MEASUREMENTS

##### 4.6.1 Electrical Measurements at Room Temperature

The parameters to be measured at room temperature are scheduled in Table 2. The measurements shall be performed at  $T_{amb} = +22 \pm 3$  °C.

##### 4.6.2 Electrical Measurements at High and Low Temperatures

The parameters to be measured at high and low temperatures are scheduled in Table 3.

##### 4.6.3 Circuits for Electrical Measurements

Circuits for use in performing the electrical measurements listed in Tables 2 and 3 of this specification are shown in Figure 4.

#### 4.7 BURN-IN TESTS

##### 4.7.1 Parameter Drift Values

The parameter drift values applicable to burn-in are specified in Table 4 of this specification. Unless otherwise stated, the measurements shall be performed at  $T_{amb} = +22 \pm 3$  °C. The parameter drift value ( $\Delta$ ) applicable to the parameters scheduled, shall not be exceeded. In addition to these drift value requirements, the appropriate limit value specified in Table 2 for a given parameter shall not be exceeded.

##### 4.7.2 Conditions for Burn-in

The requirements for burn-in are specified in Section 7 of ESA/SCC Generic Specification No. 5000. The conditions for burn-in shall be as specified in Table 5.

##### 4.7.3 Electrical Circuits for Burn-in

Circuits for use in performing the burn-in tests are shown in Figure 5 of this specification.



**TABLE 2 - ELECTRICAL MEASUREMENTS AT ROOM TEMPERATURE - d.c. PARAMETERS**

| No. | CHARACTERISTICS | SYMBOL | MIL-STD-750<br>TEST METHOD | TEST CONDITION         | LIMITS |      | UNIT          |
|-----|-----------------|--------|----------------------------|------------------------|--------|------|---------------|
|     |                 |        |                            |                        | MIN.   | MAX. |               |
| 1   | Zener Voltage   | $V_Z$  | 4022                       | $I_Z = (1) \text{ mA}$ | (2)    | (3)  | V             |
| 2   | Reverse Current | $I_R$  | 4016                       | $V_R = (4) \text{ V}$  | -      | (5)  | $\mu\text{A}$ |

**TABLE 2 - ELECTRICAL MEASUREMENTS AT ROOM TEMPERATURE - a.c. PARAMETERS**

| No. | CHARACTERISTICS                        | SYMBOL | MIL-STD-750<br>TEST METHOD | TEST CONDITION<br>(Note 10) | LIMITS |      | UNIT     |
|-----|--|--------|----------------------------|-----------------------------|--------|------|----------|
|     |  |        |                            |                             | MIN.   | MAX. |          |
| 3   | Small Signal<br>Breakdown<br>Impedance | $Z_Z$  | 4051                       | $I_Z = (1) \text{ mA}$      | -      | (6)  | $\Omega$ |
| 4   | Small Signal<br>Breakdown<br>Impedance | $Z_K$  | 4051                       | $I_{ZK} = (8) \text{ mA}$   | -      | (7)  | $\Omega$ |

**NOTES**

1. See Table 1(a), Column 6.
2. See Table 1(a), Column 4.
3. See Table 1(a), Column 5.
4. See Table 1(a), Column 9.
5. See Table 1(a), Column 10.
6. See Table 1(a), Column 8.
7. See Table 1(a), Column 12.
8. See Table 1(a), Column 13.
9. See Table 1(a), Column 14.
10. Tests to be performed on a sample basis, LTPD 7 or less.

**FIGURE 4 - TEST CIRCUITS**

Not applicable.

**TABLE 3 - ELECTRICAL MEASUREMENTS AT HIGH AND LOW TEMPERATURES**

| No. | CHARACTERISTICS | SYMBOL | MIL-STD-750<br>TEST METHOD | TEST CONDITIONS<br>See Note 10           | LIMITS |      | UNIT    |
|-----|-----------------|--------|----------------------------|--|--------|------|---------|
|     |                 |        |                            |  | MIN.   | MAX. |         |
| 2   | Reverse Current | $I_R$  | 4016                       | $T_{amb} = +150^{\circ}C$<br>$V_R = (4)$ | -      | (9)  | $\mu A$ |

**NOTES**

- See Page 14, Notes (1) to (9) only.

**TABLE 4 - PARAMETER DRIFT VALUES**

| No. | CHARACTERISTICS                      | SYMBOL | SPEC. AND<br>TEST METHOD | TEST<br>CONDITIONS | CHANGE<br>LIMITS<br>( $\Delta$ ) | UNIT        |
|-----|--------------------------------------|--------|--------------------------|--------------------|----------------------------------|-------------|
| 1   | Zener Voltage                        | $V_Z$  | As per Table 2           | As per Table 2     | $\pm 5.0$                        | %           |
| 2   | Reverse Current<br>for $V_Z > 3V$    | $I_R$  | As per Table 2           | As per Table 2     | $\pm 100$ or<br>50<br>see Note   | % (3)<br>nA |
| 2   | Reverse Current<br>for $V_Z \leq 3V$ | $I_R$  | As per Table 2           | As per Table 2     | + 50<br>-100                     | %<br>%      |

**NOTES**

- Whichever is greater.

**TABLE 5 - CONDITIONS FOR BURN-IN**

| No. | CHARACTERISTIC          | SYMBOL     | CONDITION                          | UNIT        |
|-----|-------------------------|------------|------------------------------------|-------------|
| 1   | Ambient Temperature     | $T_{amb}$  | + 25<br>Distance from case:<br>4mm | $^{\circ}C$ |
| 2   | Working Current Current | $I_{Zmax}$ | See Table 1(a),<br>Column 7        | mA          |

**FIGURE 5 - ELECTRICAL CIRCUIT FOR BURN-IN**

Not applicable.



4.8 ENVIRONMENTAL AND ENDURANCE TESTS (CHARTS IV AND V OF ESA/SCC GENERIC SPECIFICATION NO. 5000)

4.8.1 Electrical Measurements on Completion of Environmental Tests

The parameters to be measured on completion of environmental tests are scheduled in Table 2. The measurements shall be performed at  $T_{amb} = +22 \pm 3$  °C.

4.8.2 Electrical Measurements at Intermediate Points and on Completion of Endurance Tests

The parameters to be measured at intermediate points and on completion of endurance testing are scheduled in Table 6.

4.8.3 Conditions for Operating Life Tests (Part of Endurance Testing)

The requirements for operating life testing are specified in Section 9 of ESA/SCC Generic Specification No. 5000. The conditions for operating life testing shall be the same as specified in Table 5 for the burn-in test.

4.8.4 Electrical Circuits for Operating Life Tests

The circuit to be used for performance of the operating life test shall be the same as shown in Figure 5 for burn-in.

4.8.5 Conditions for High Temperature Storage Test (Part of Endurance Testing)

The requirements for the high temperature storage test are specified in ESA/SCC Generic Specification No. 5000. The temperature to be applied shall be the maximum storage temperature specified in Table 1(b) of this specification.





**TABLE 6 - ELECTRICAL MEASUREMENTS AT INTERMEDIATE POINTS AND ON COMPLETION OF ENDURANCE TESTING**

| No. | CHARACTERISTICS | SYMBOL | SPEC. AND TEST METHOD | TEST CONDITIONS | LIMITS |      | UNIT    |
|-----|-----------------|--------|-----------------------|-----------------|--------|------|---------|
|     |                 |        |                       |                 | MIN.   | MAX. |         |
| 1   | Zener Voltage   | $V_Z$  | As per Table 2        | As per Table 2  | (1)    | (2)  | V       |
| 2   | Reverse Current | $I_R$  | As per Table 2        | As per Table 2  | -      | (3)  | $\mu A$ |

**NOTES**

1. See Table 1(a), Column 4.
2. See Table 1(a), Column 5.
3. See Table 1(a), Column 10.

|   |  |   |                            |
|---|--|---|----------------------------|
|   | <p style="text-align: center;">ESA/SCC Detail Specification<br/>No. 5102/010</p> | <p style="text-align: center;">Rev. 'B'</p> | <p>PAGE 18<br/>ISSUE 4</p> |
|---|--|---|----------------------------|

APPENDIX 'A'

Page 1 of 1

AGREED DEVIATIONS FOR THOMSON-CSF

| ITEMS AFFECTED                | DESCRIPTION OF DEVIATIONS   |
|-------------------------------|---|
| <p>Para's 4.2.4 and 4.2.5</p> | <p>Deviations from Environmental and Endurance Tests (Chart IV) and from Lot Acceptance Tests (Chart V)</p> <ol style="list-style-type: none"> <li>1. "Moisture Resistance", Para 9.16, according to MIL-STD-750, Method 1021, shall be replaced by "Climatic Sequence" according to IEC 68-1 with the following conditions: <ul style="list-style-type: none"> <li>- Phase 'D': Option 2, 5 cycles.</li> <li>- Phase 'F' (Low Air Pressure): Not applicable.</li> </ul> </li> <li>2. "Seal Test", Para's 9.8.1 and 9.8.2 according to MIL-STD-750, method 1071, Conditions 'C' and 'H', shall be replaced by "Seal Test" according to IEC 68-2-17, Test QI (Bomb Pressure Test) with the following conditions: <ul style="list-style-type: none"> <li>- The pressure within the vessel shall be 210N/cm<sup>2</sup>.</li> <li>- The duration of conditioning shall be 4 hours.</li> <li>- Final measurements: I<sub>R</sub> with the limits as specified in Table 2 of this Detail Specification.</li> </ul> </li> </ol> |