



europaean space agency
agence spatiale européenne

Pages 1 to 8

EXTERNAL VISUAL INSPECTION OF QUARTZ

CRYSTAL UNITS

ESA/SCC Basic Specification No. 2053501



**space components
coordination group**

Issue/Rev.	Date	Approved by	
		SCCG Chairman	ESA Director General or his Deputy
Issue 1	September 1994		
Revision 'A'	September 1997		



SCC

ESA/SCC Basic Specification
No. 2053501

Rev. 'A'

PAGE 2

ISSUE 1

DOCUMENTATION CHANGE NOTICE

Rev. Letter	Rev. Date	Reference	CHANGE Item	Approved DCR No.
'A'	Sept. '97	P1. Cover Page P2. DCN P3. T of C P5. Para. 3.5(e) P7. Figure I	: Figure I Title amended : Existing text deleted and new text added : Existing figure deleted and new figure added	None None 221407 221407 221407

**TABLE OF CONTENTS**

	<u>Page</u>
1. <u>SCOPE</u>	4
2. <u>GENERAL REQUIREMENTS</u>	4
2.1 Applicability	4
2.2 Procedure	4
2.3 Magnification	4
2.4 Mounting Fixtures	4
3. <u>DETAILED REQUIREMENTS</u>	4
3.1 General	4
3.2 Dimensions and Marking	4
3.3 Materials	4
3.4 Lead Conditions	5
3.5 Lead Configuration	5
3.6 Case Defects	5
3.6.1 Quartz Crystal Units in Glass Envelopes	5
3.6.2 Quartz Crystal Units in Metal Case	6
3.7 Case or Package Sealing	6
3.8 Case Concentricity	6
3.9 Foreign Particles	6
<u>FIGURES</u>	
I OFF-CENTRE LEADS	7
II LEAD TILT	7
III CASE CONCENTRICITY	8

**1. SCOPE**

This specification, to be read in conjunction with ESA/SCC Basic Specification No. 20500, 'External Visual Inspection', contains additional requirements for Quartz Crystal Units. They shall apply, where relevant, to each component inspected.

2. GENERAL REQUIREMENTS**2.1 APPLICABILITY**

The following criteria may not be varied or modified after commencing any inspection stage. Any ambiguity or proposed minor deviation shall be referred to the Qualifying Space Agency for resolution and approval.

2.2 PROCEDURE

All items shall be examined in such a manner that a minimum of handling and movement of the component is involved.

2.3 MAGNIFICATION

All items shall be examined with a binocular or stereoscopic microscope under a magnification of at least X7.

2.4 MOUNTING FIXTURES

Suitable fixtures may be used to assist in the inspection process provided they do not of themselves cause damage to the device.

3. DETAILED REQUIREMENTS**3.1 GENERAL**

A unit shall be rejected if it exhibits one or more of the defects listed in any of the following paragraphs. Where applicable, drawings are included to provide additional explanatory material.

The external visual inspection includes the verification of:-

- Dimensions.
- Marking.
- Materials.
- Mechanical defects.

3.2 DIMENSIONS AND MARKING

Dimensions and marking shall be inspected in accordance with the requirements of ESA/SCC Basic Specification No. 20500, Paras. 4.6 and 4.7.


All letters and numbers shall be clearly legible without the use of optical resources.

Dimensional tolerances, including those of pin diameter and pin spacing, shall be as specified in the relevant ESA/SCC Detail sSpecification.

3.3 MATERIALS

The materials used shall be verified for conformance to the requirements of the applicable ESA/SCC Detail Specification.

The production records shall be checked to ensure that the specified material requirements are met.

	<p style="text-align: center;">ESA/SCC Basic Specification No. 2053501</p>	<p style="text-align: center;">Rev. 'A'</p>	<p>PAGE 5 ISSUE 1</p>
---	--	---	---------------------------

3.4 LEAD CONDITIONS

- (a) Base material, exposed by chipped glass meniscus, in excess of lead diameter or thickness.
- (b) Exposed base material anywhere on the lead within a distance of 20mm of the case, other than that caused by (a).
- (c) Exposed base material more than 5.0% of the surface area anywhere on the lead, beyond a distance of 20mm from the case.
- (d) Non-conductive material on the lead beyond a distance of 1.5mm from the case.
- (e) Reduction of more than 10% in lead diameter, width or thickness, within 20mm of the case.
- (f) Nicks, fractures, non-uniformity or discolouration of coating or abrasions exposing base material.

3.5 LEAD CONFIGURATION

- (a) Configuration of pin count and style in accordance with the relevant ESA/SCC Detail Specification.
- (b) Round leads, twisted more than 1 revolution along the length, or flat leads, twisted more than 10° per 10mm of length.
- (c) Leads kinked, or bent and rebent, within 20mm of the case.
- (d) Leads deviating from the specified direction by more than 1.0mm per any 5.0mm of length.
- (e) The minimum distance between the lead and the body shall be 0.13mm.
- (f) Lead tilted by more than 5° (see Figure II).

3.6 CASE DEFECTS

3.6.1 Quartz Crystal Units in Glass Envelopes

3.6.1.1 Glass-filled Cases

Filling protruding beyond the level of the case flange.

3.6.1.2 Face of the Glass Envelope through which the Leads pass

- (a) Single bubbles, whose diameters exceed 7.5% of the minor dimension of the face or 0.5mm, whichever is less.
- (b) A localised area of bubbles, which cannot be separated from each other or whose spatial distribution cannot be determined.
- (c) Cracks.
- (d) Embedded foreign material.
- (e) Surface chips.



3.6.1.3 Other Faces (if visible)

- (a) Single bubbles, whose diameters exceed 1.0mm.
- (b) A localised area of bubbles, which cannot be separated from each other or whose spatial distribution cannot be determined.
- (c) Cracks.
- (d) Embedded foreign material.
- (e) Surface chips.

3.6.2 Quartz Crystal Units in Metal Cases

- (a) Cracks or chips in glass seals.
- (b) Bubbles or an area of adjacent bubbles in the seal area larger than 12.5% of the seal area.
- (c) Foreign particles enclosed in the glass seal.
- (d) Burrs and sharp edges not removed from metal parts.
- (e) Corroded metal.
- (f) Soiled or dented metal.
- (g) Scratches in finish exposing base metal.

3.7 CASE OR PACKAGE SEALING

- (a) Lack of solder continuity around the entire perimeter of the case or solder protruding beyond the edge of the case.
- (b) Soldering fluxes and their residues not removed after soldering.
- (c) Weld: spatters, lack of uniformity or continuity of weld.
- (d) Reduction by more than 30% of the design sealing area due to undercutting of sealing material or misalignment of case parts.

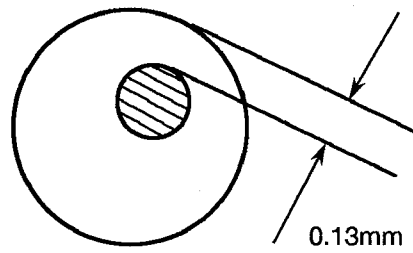
3.8 CASE CONCENTRICITY

- (a) Minimum clearance between case perimeter and header perimeter is less than 70% of the maximum clearance (see Figure III).
- (b) Incorrect mounting of holder cover onto base.

3.9 FOREIGN PARTICLES

Loose solder or other foreign particles in quartz crystal unit (to be inspected by shaking the unit).

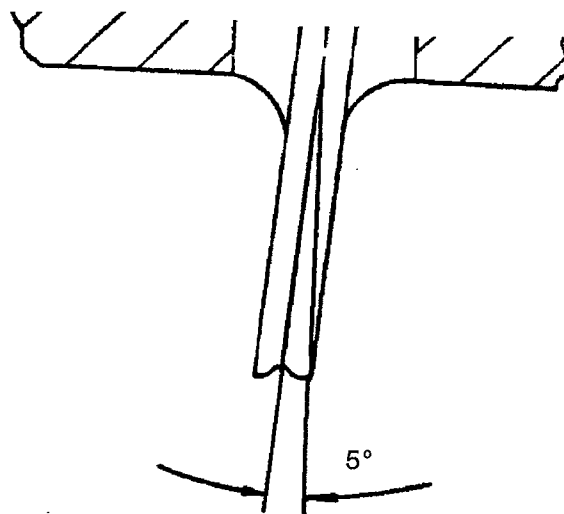
FIGURE I - OFF-CENTRE LEADS



NOTES

1. See Para. 3.5(e).

FIGURE II - LEAD TILT

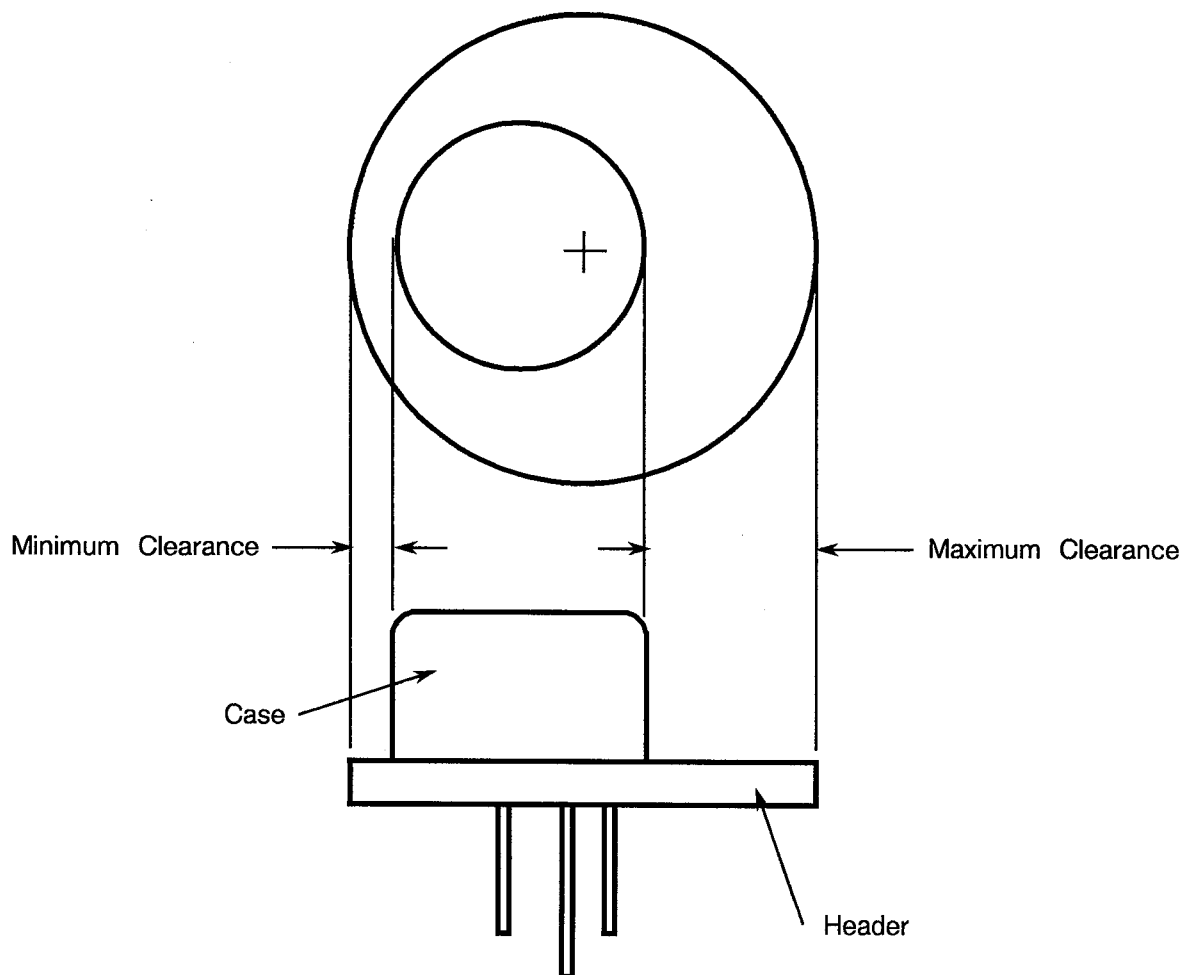


NOTES

1. See Para. 3.5(f).



FIGURE III - CASE CONCENTRICITY



NOTES

1. See Para. 3.8(a).