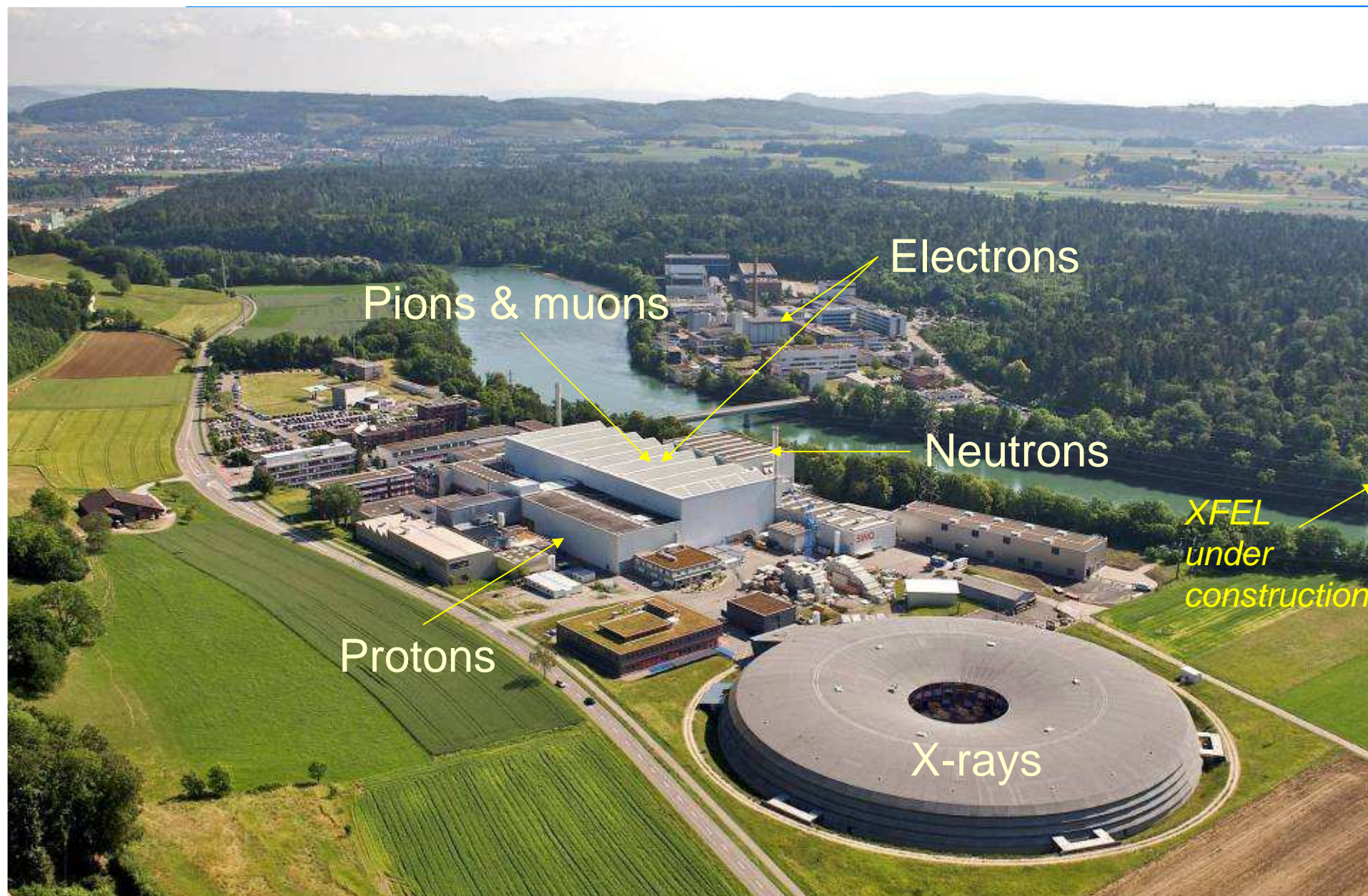




Nos creare scientia hodie ad cras

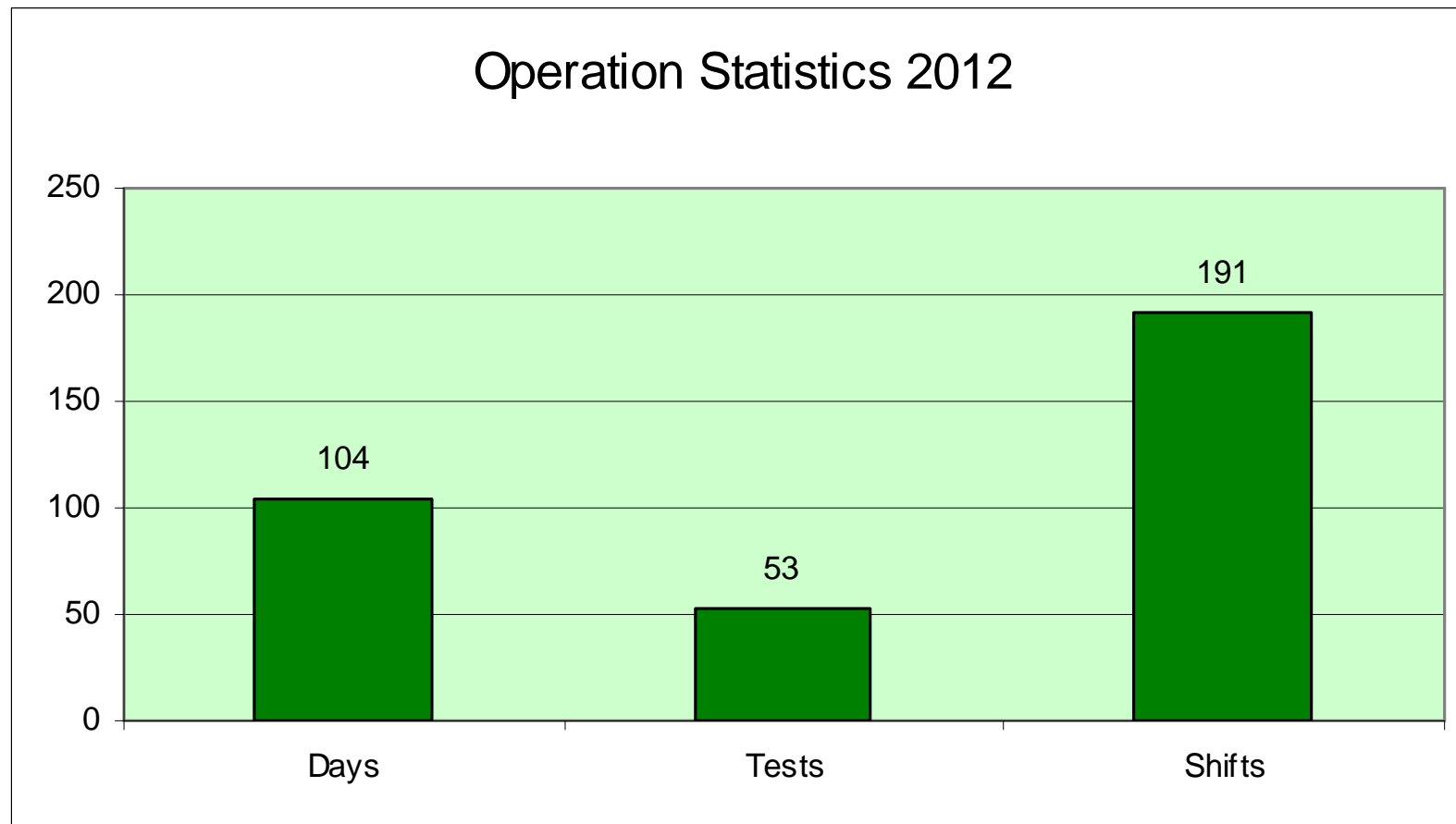
PIF - Proton Irradiation Facility Summary 2012

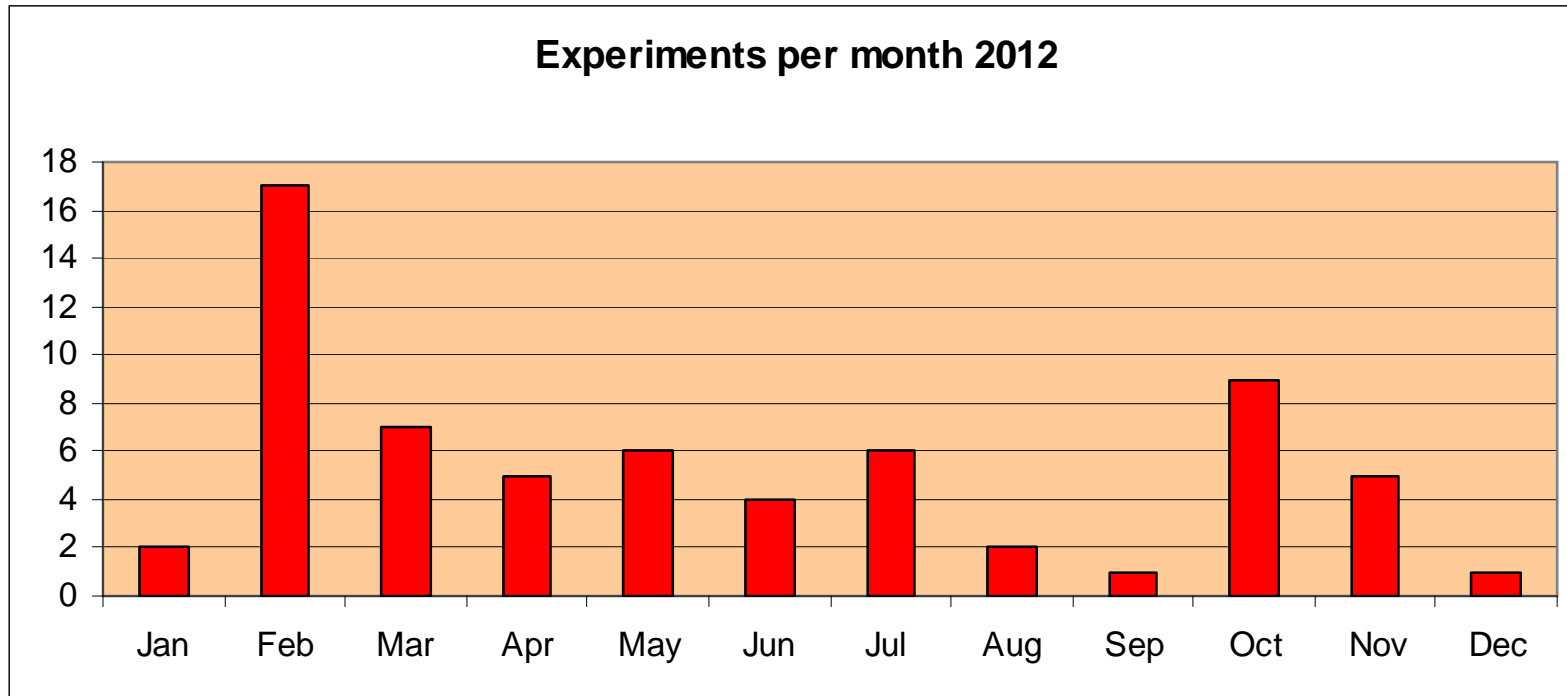
Wojtek Hajdas / PIF-LTP-NUM



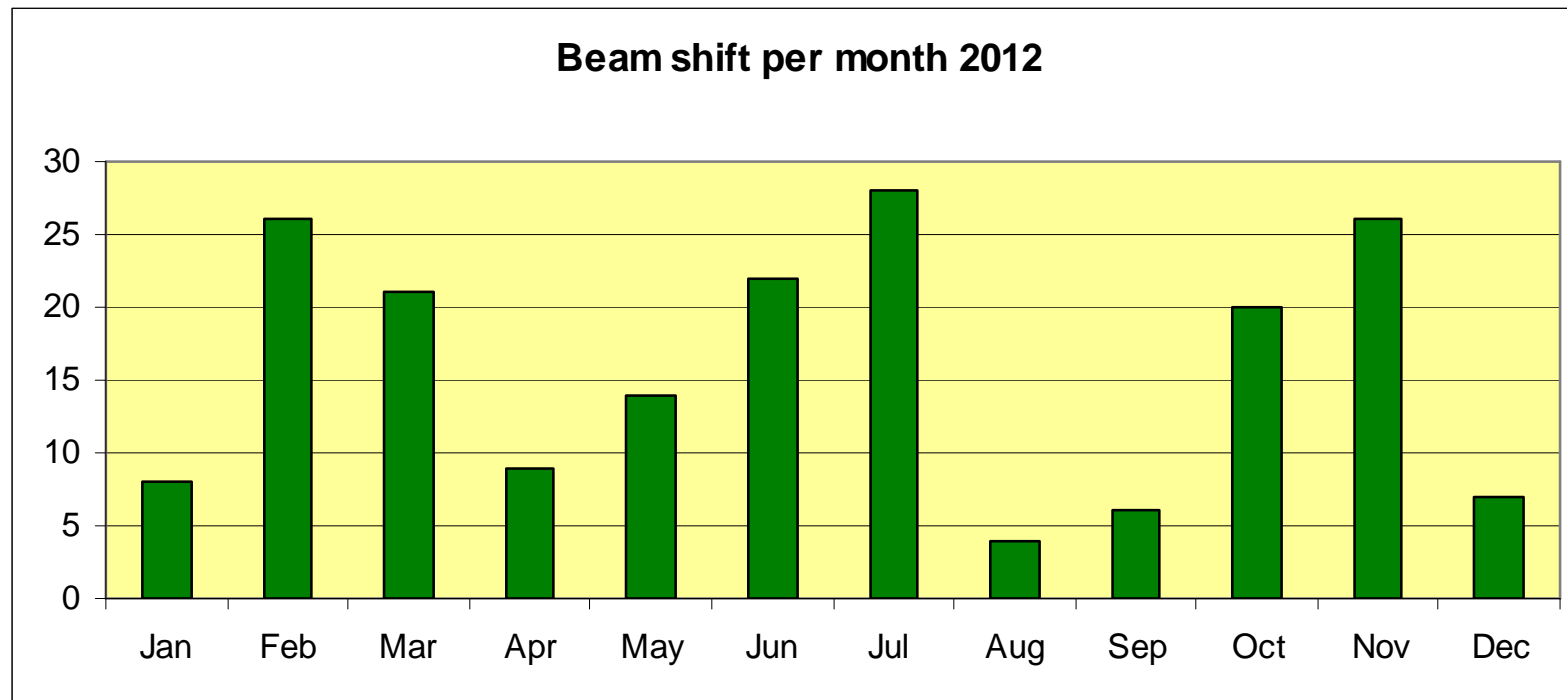


- Beam hours (flat) - 1528
- Days with beam - 104
- Shifts - 191
- Experiments - 53 (protons)
- Institutions - 28
- Users - 145
- ESA shifts/hours - 67 / 536
- ESA protons s/h - 44 / 352
- ESA electrons s/h - 23 / 184





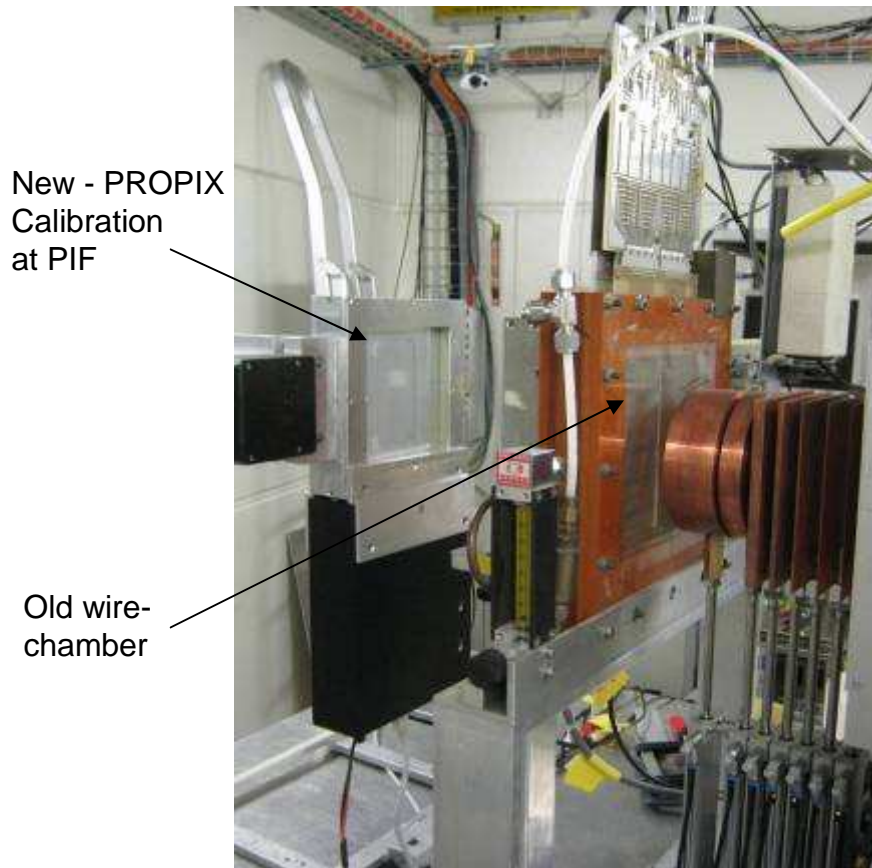
Remark: Group is treated as experiment;
In case of e.g. CERN number of experiments is larger



Beam utilization calendar

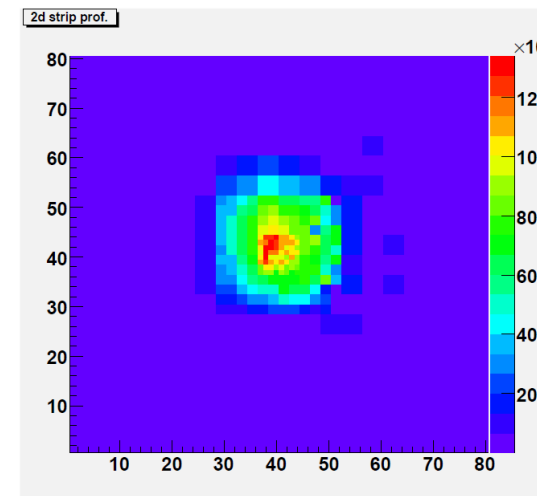


	1	2	3	4	5	6	7	8	9	10	11	12	13	14	15	16	17	18	19	20	21	22	23	24	25	26	27	28	29	30	31
Jan																															
Feb																															
Mar																															
Apr																															
May																															
Jun																															
Jul																															
Aug																															
Sep																															
Oct																															
Nov																															
Dec																															

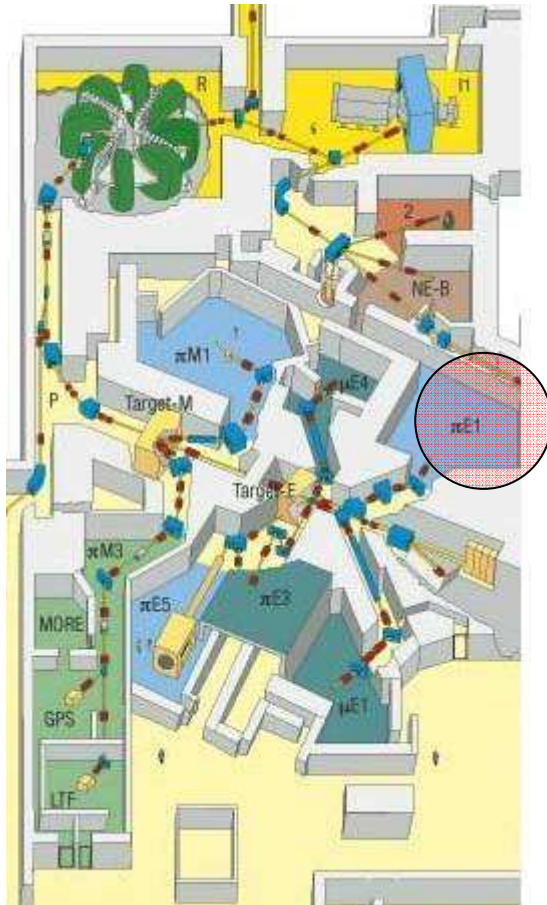


*Portable Beam Profile Monitor PROPIX for
ESA Facilities and PSI Beam-lines*

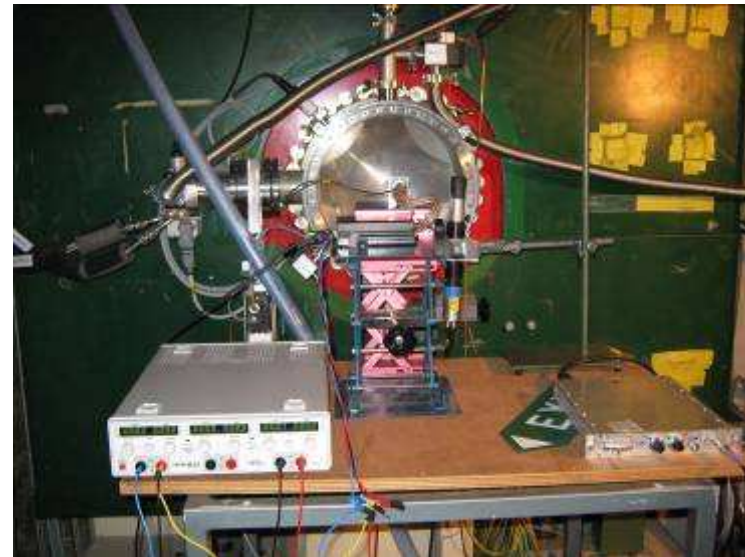
- Pixelized ionization chamber
- Wide range of energies
- Sensitive for low and high intensities
- Fast on-line beam profile monitoring
- Tested with protons and muons
- Verification in Sevilla with p, d
- New units almost completed



Tests with high energy electrons



- Search for high energy e-beams
- PSI secondary beam-line $\pi E1$
- Energy selection: 6 MeV/c up tested
- Further tests planned



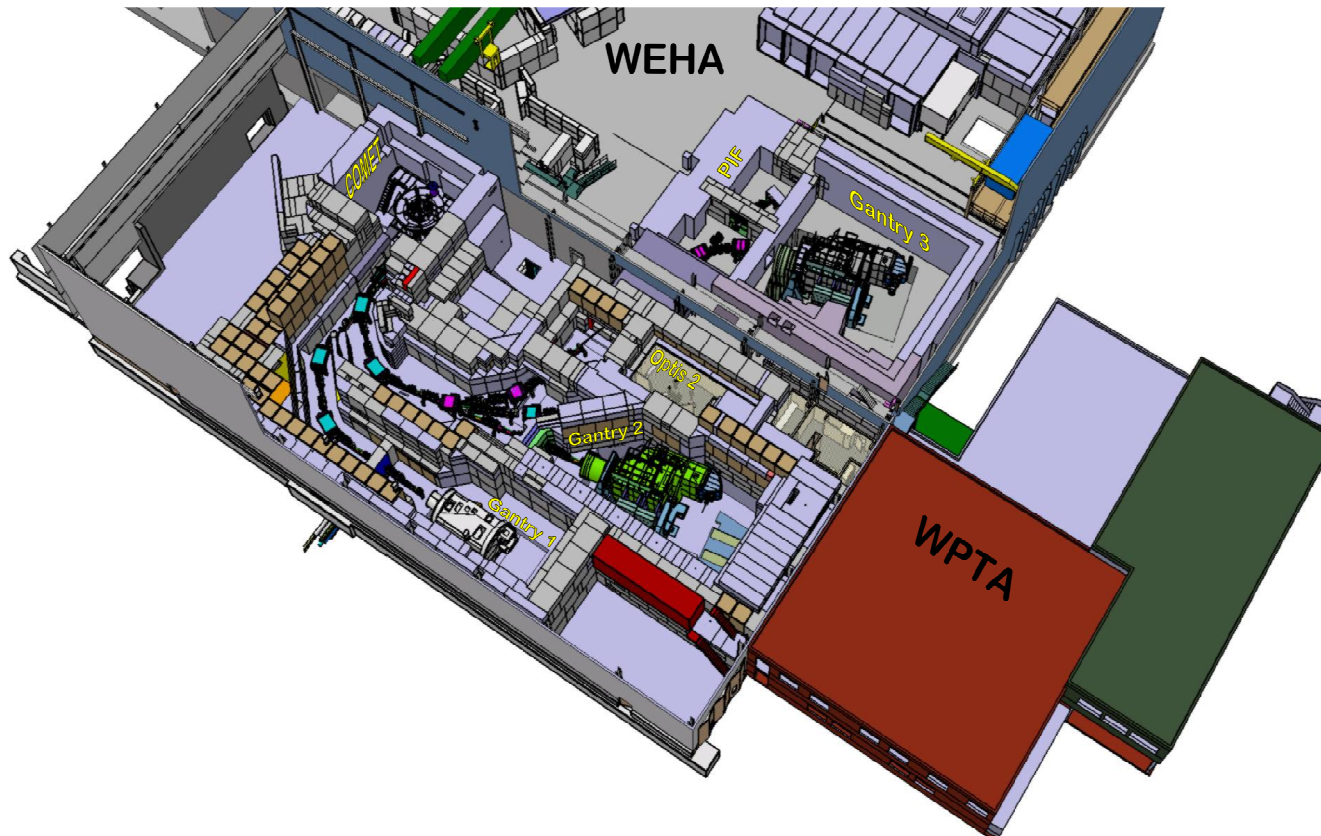
Tests with low energy electrons



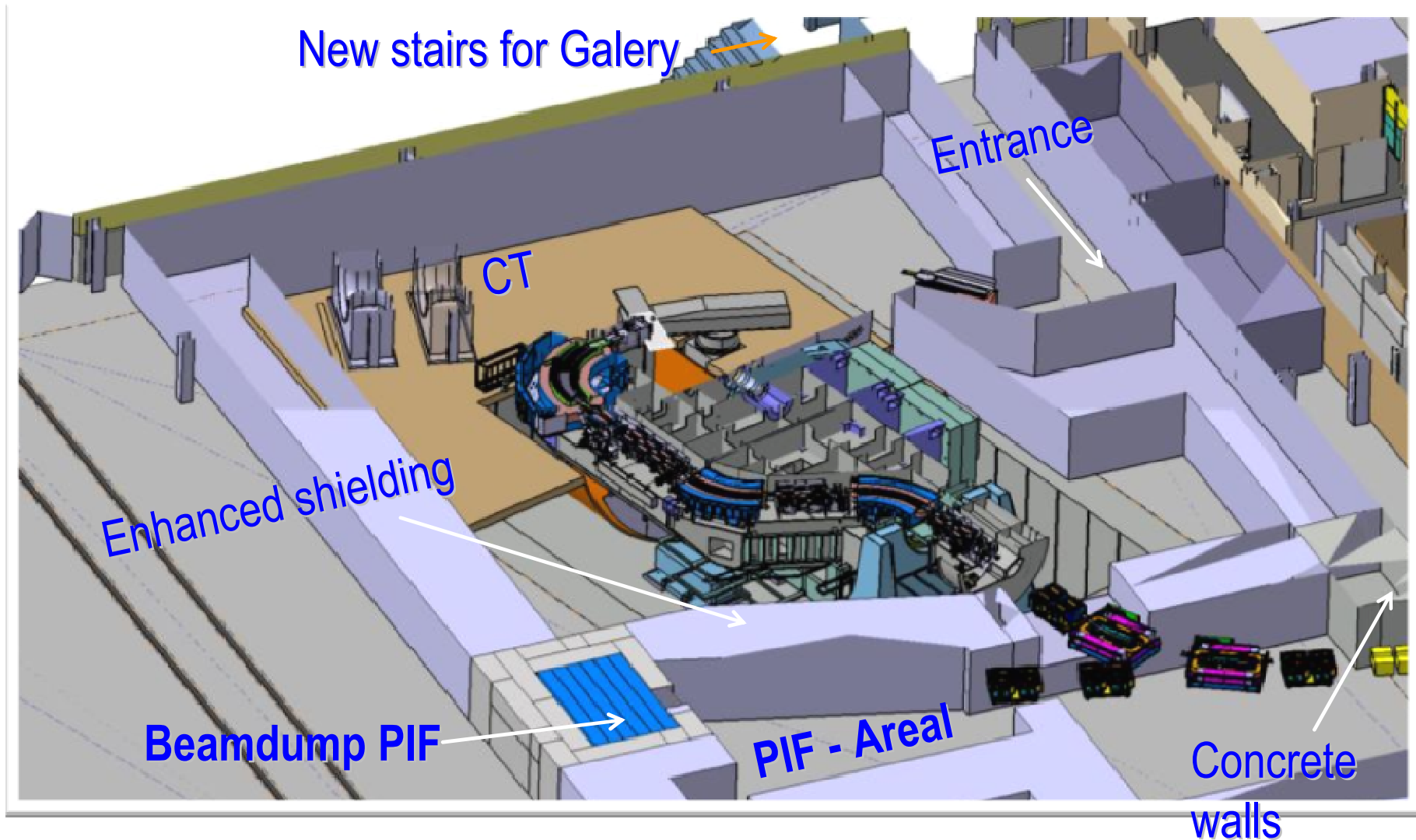
- Large vacuum chamber
- Monochromating magnet
- Electron source ^{90}Sr (37 MBq)
- XY-table
- Extra equipment:
 - illumination
 - temperature sensors
 - patch panels
 - beam dosimetry



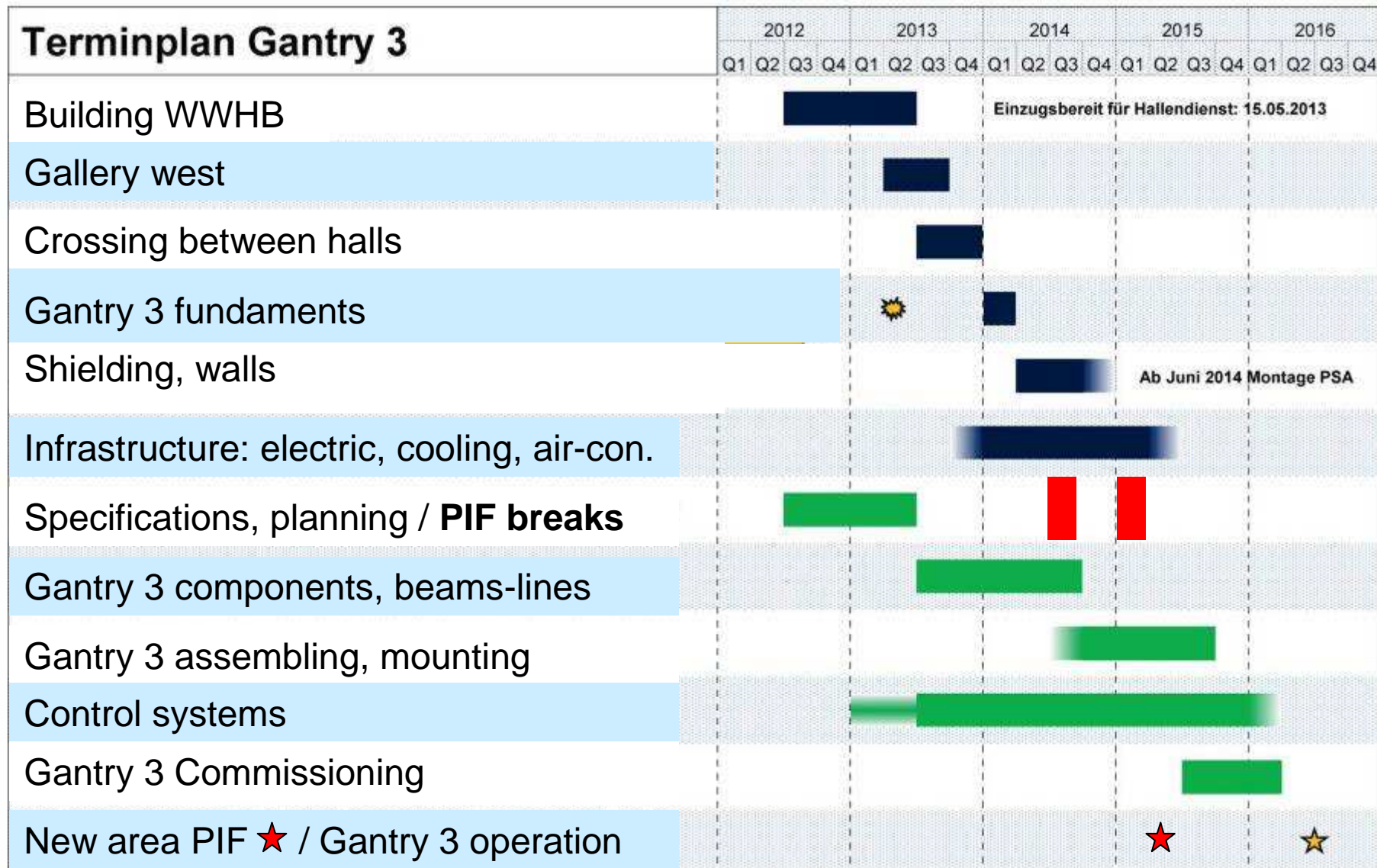
- New, third Gantry (Gantry 3) is to be constructed at PSI
- The concept requires guiding beam through current PIF area
- Planning made to have two short break periods of PIF
- Employment of muon areas in EH for low energy test-campaigns

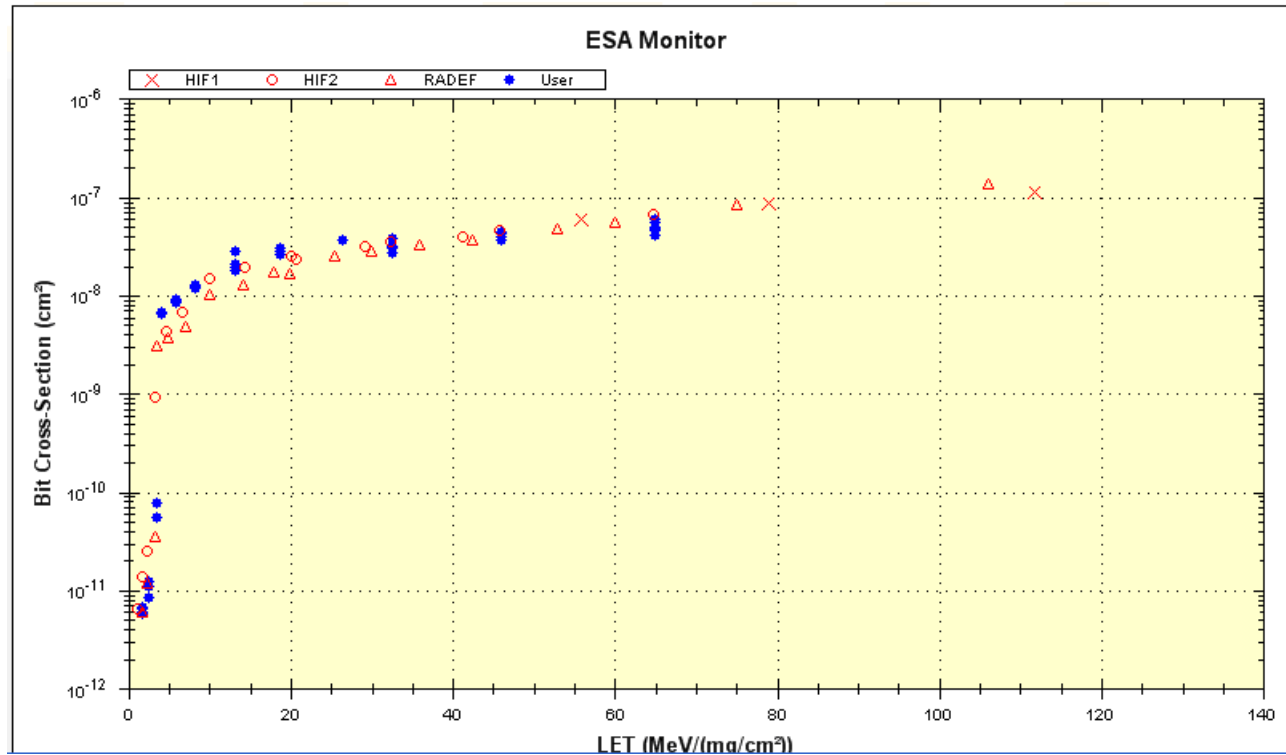


New exposures areas with PIF and Gantry 3



Time-plan for Gantry 3 construction





- Two SEU Monitors used at the same time
- Four different ions selected
- Three incoming angles
- Short proton pre-test conducted
- Analysis ongoing

Thank You

