

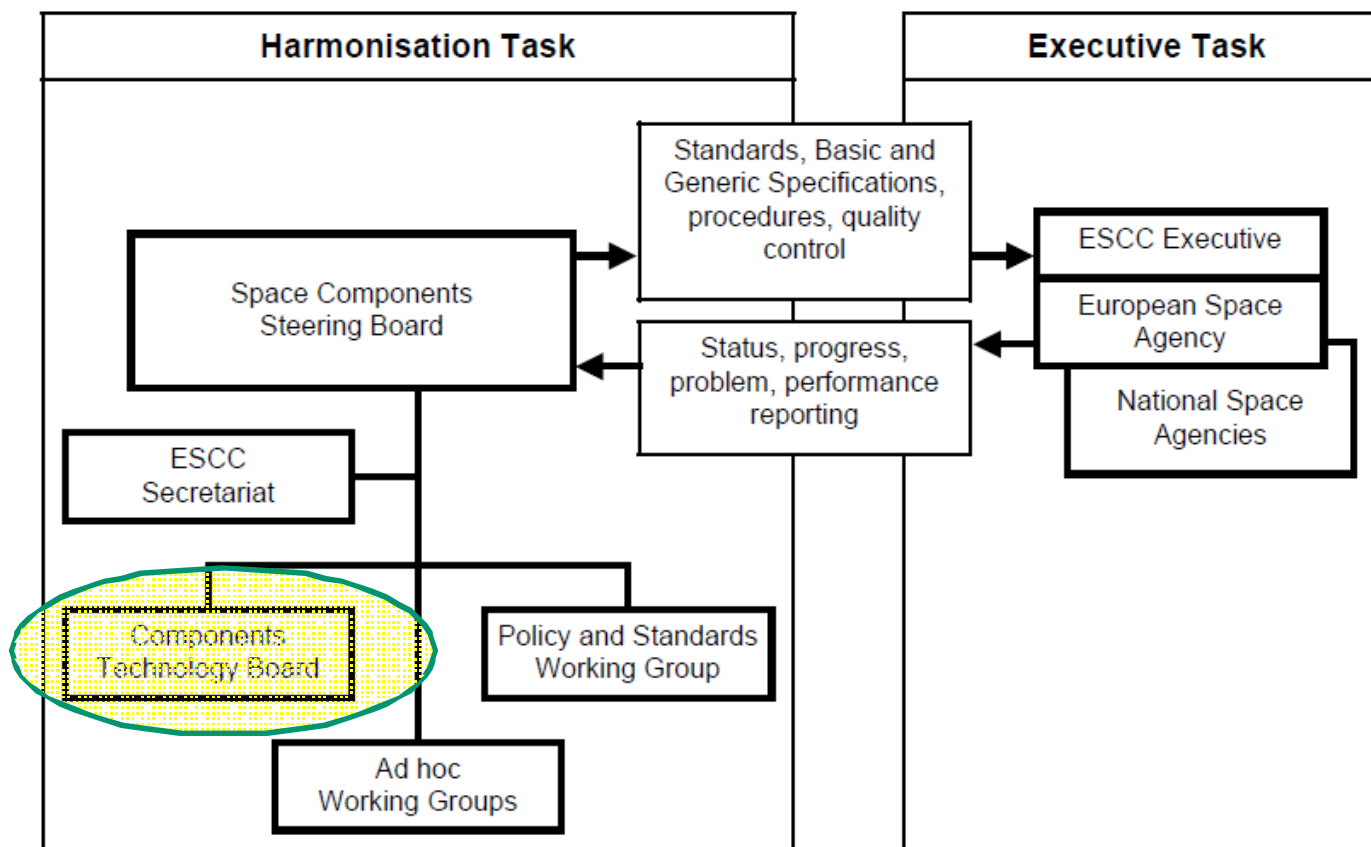


CTB Roadmap 2017-2025

September 2016

(Jean-Louis Cazaux, as CTB Chairman)

- CTB: Component Technology Board
- An ESCC body, subordinate to the SCSB
- Created in October 2002 according to ESCC Charter 00000
- Defined by ESCC 10400 (Issue 2, July 2003)



The CTB is charged with **the formulation of strategic programmes and work plans for technology research and development** in the area of **European EEE space components**.

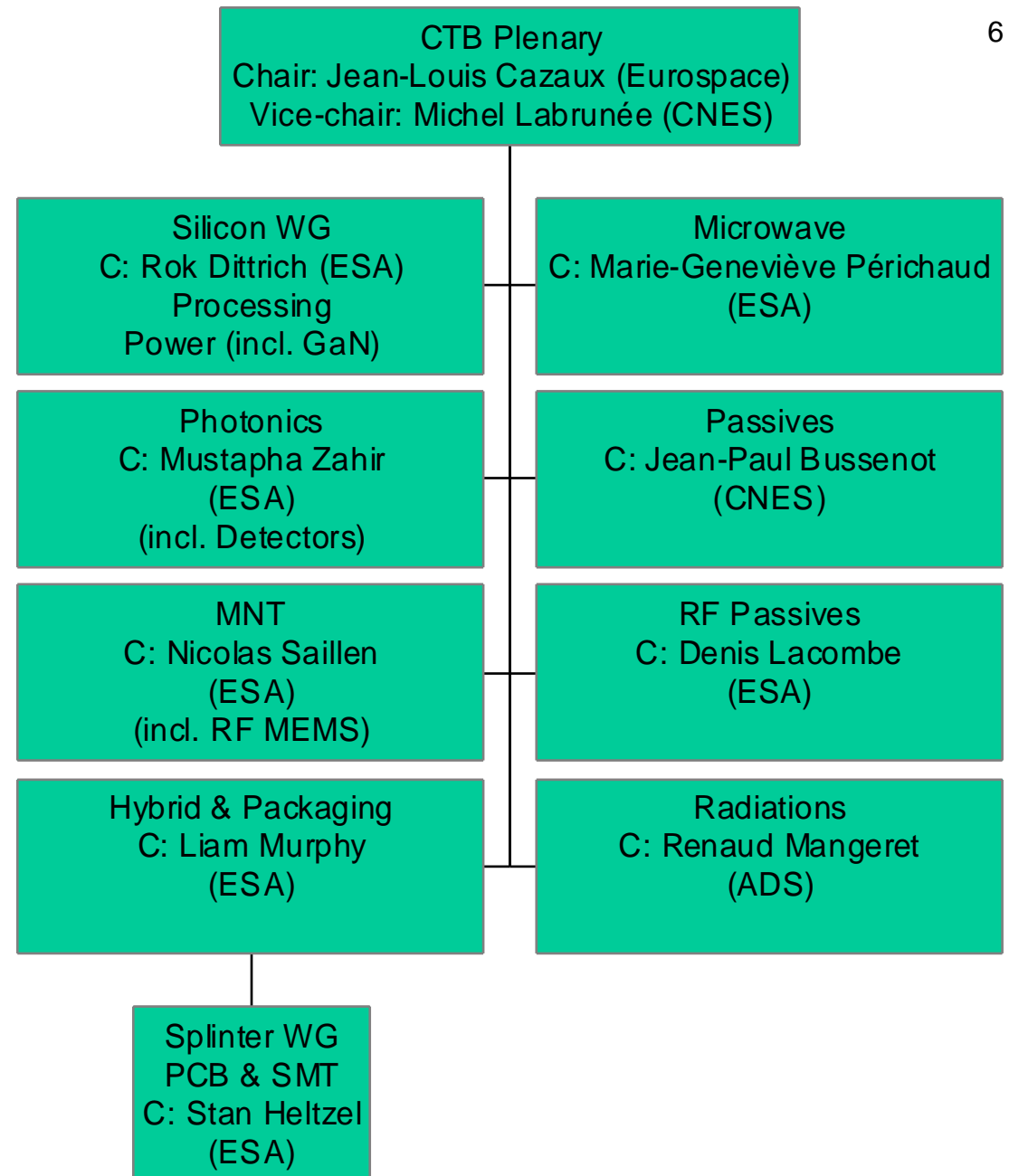
It **harmonises** the collectively funded component research, development, evaluation, qualification, standardisation and quality assurance activities.

- According to ESCC charter, members belong to 3 categories:
 - ✈ – the European space component user industries collectively represented by Eurospace
 - ✈ – the European EEE space component manufacturers
 - ✈ – the European national and international public space organisations.

- 3 meetings of 1.5 day per year

Function	Affiliation	Members	Voting right	Other members (deputy)
Silicon Manufacturers	STM	Thibault Brunet		
	ATMEL	Bernard Bancelin	X	
GaAs Manufacturers	UMS	Ulf Meiners	X	
Passive Manufacturers		To be nominated		
Hybrid Manufacturers	THALES ALENIA SPACE Belgium	Pascal Delporte	X	
	e2v	Jean-François Bruyeres		
Eurospace - CTB chairman	THALES ALENIA SPACE	Jean-Louis Cazaux	X	
Eurospace	ADS	Klaus Hirche	X	
				Richard Wiest
	THALES ALENIA SPACE	Ulisse di Marcantonio	X	
	OHB	Burak Gökgöz		
	RUAG Space	Andreas Billström		
	Alter	Augustin Coello-Verra	X	
DLR	TESAT	Ottmar Heger	X	
ASI	ASI	Rita Carpentiero	X	Silvia Natalucci
ASI Advisor	IMT			Giovanni Cuccinella
UKSA	EEE Components Quality and Reliability Consultancy Ltd	John Wall	X	
CNES - CTB Dpty-Chair	CNES	Michel Labrunée	X	
CNES				Pierre Tastet
ESA	ESA	Laurent Marchand	X	
ESCC technical secretary	ESA	Ralf de Marino		
EC Observer	EC	Fabio Vitobello		

- 9 thematic Working Groups (WG) reporting to the “CTB Plenary”
- In total, and as for today, CTB WGs involve 155 individuals from 46 different organizations
- Materials issues now dealt by MPTB (Chair: Thomas Rohr, ESA) which directly reports to SCSB





CTB Roadmaps: making-up

- Roadmaps made from the inputs of all CTB Working Groups and from the contribution of all CTB Members
- Potential ECI-5 has been defined at large: “could be ECI-5” in addition to other scheme: GSTP, TRP, ARTES, ...

Results

	Nbr of Actions	Total Amount	Nbr of Potential ECI-5	Total Amount
P1	41	37 M€	35	32 M€
P2	34	33 M€	24	13 M€

Legend for next detailed charts



